

CORNER FILE TRACKING

H:\Survey\Corners\Misc\Filetrac.doc

11/23/98

CORNER NUMBER
146862060

STEP	HISTORY()	RESTORATION()
Form Prepared, DB	9/27/04	12/20/04
Field Inspection, DB	12/16/04	12/16/04
Form Checked, DB	12/27/04	12/27/04
Form Edited, DB	12/28/04	12/28/04
Form Signed, DB	12/28/04	12/28/04
Counter Index	12/17/04	12/17/04
GIS Index	12/20/04	12/20/04
Authorize Payment, DB	—————	—————
Archive Digital Files	12/30/04	12/30/04
Collect Documents	12/30/04	12/30/04
Scanned	12/30/04	12/30/04
Copy For Filming	12/30/04	12/30/04
Filed, DB		
Finish index (count unit)	12/16/04	12/16/04
Filmed (Archived), DB		

(DB) = Entry needed in database (Access).

COMMENTS:

DATE 09/27/2004TOWNSHIP 14 SOUTH, RANGE 06 WEST, WILLAMETTE MERIDIAN; SECTION 21 CORNER N/A
DONATION LAND CLAIM ISAAC RAMBO NO. 62 CORNER NORTHWEST**COMMON CORNER(S):**

NONE

RECORDS (INFORMATION IN *BOLD ITALICS* IS COUNTY STAFFS' INTERPRETATION OF THE RECORD)
BASED ON EXTENSIVE RESEARCH AND RECOVERY OF EVIDENCE, THIS OFFICE HAS DETERMINED THAT MOST GENERAL LAND OFFICE SURVEYORS MEASURED TO THE FACE OF BEARING TREES.

- [01] GENERAL LAND OFFICE (GLO) NOTES OF THE ISAAC RAMBO DONATION LAND CLAIM (DLC) NO. 62 BY DENNIS HATHORN, D.S., DATED FEBRUARY 3, 1855. *SET A POST. MARKED A 12" OAK S38°W 57 LKS. (37.62 FT.) AND A 6" OAK N48°W 52 LKS. (34.32 FT.)*
- [02] COUNTY SURVEY NO. 455 (OLD NO. 210) FIELD NOTES (FIELDBOOK 17, PAGE 44) BY BURT WILKES, D.C.S., DATED JULY 22, 1914. *FOUND ORIGINAL STAKE.*
- [03] CORNER RESTORATION BOOK NO. 1, PAGE 80 BY BURT WILKES, D.C.S., DATED JUNE 16 – JULY 16, 1914. *SET A 1/2" PIPE IN ORIGINAL HOLE. FOUND AN OAK (GLO BT) N443/4°W 0.511 CHS. (33.729 FT.) AND AN OAK (GLO BT) S311/4°W 0.564 CHS. (37.22 FT.)*
- [04] CORNER RESTORATION NO. 2415. *TRANSCRIBED FROM RECORD [03] AND MAY CONTAIN ERRORS AND/OR OMISSIONS.*
- [05] CLOVERDALE FARM, A RECORDED SUBDIVISION BY BURT WILKES, D.C.S., DATED AUGUST 1914. *1/2" PIPE.*
- [06] COUNTY SURVEY NO. 604 (OLD NO. 210) BY W. C. GALLOWAY, C.S., NO DATE GIVEN. *FOUND 1/2" PIPE. FOUND AN OAK (GLO BT) N443/4°W 0.511 CHS. (33.73 FT.) AND AN OAK (GLO BT) S311/4°W 0.564 CHS. (37.22 FT.)*
- [07] BENTON COUNTY MAP NO. 14-6-00018, BY BENTON COUNTY SURVEYOR'S OFFICE, NO DATE GIVEN. *1/2" PIPE.*
- [08] COUNTY SURVEY NO. 2743 BY RICHARD FAIL, P.L.S., DATED MARCH 16, 1956. *NOT TIED OR DESCRIBED.*
- [09] COUNTY SURVEY NO. 9013 BY TED LANGTON, P.L.S., DATED OCTOBER 5, 1995. *FOUND 1/2" PIPE ABOUT 150' NORTH OF A CLEARCUT.*

NOTES:

THIS IS A MICROSOFT WORD 2000 DOCUMENT NAMED "46862060" CREATED FROM A BOILER PLATE DOCUMENT NAMED "HISTORY", WHICH HAS A STYLESHEET NAMED "CORNER" ATTACHED TO IT.

FIRM/AGENCY: BENTON COUNTY SURVEYOR'S OFFICE
ADDRESS: 360 S.W. AVERY AVE. CORVALLIS OR 97333; PH. 766-6821
RESEARCH BY: BERNARD S. ALTENBACH, ENGINEER/SURVEY TECH.
DATA ENTRY BY: BSA

BENTON COUNTY CORNER RESTORATION FORM, PAGE 2 OF 2, 146862060R2

SEE CORNER HISTORY FORM FOR RECORDS ETC.

CORNER RESTORATION FIELD BOOK NUMBER 22 PAGE(S) 74 DATE 12/16/2004
TOWNSHIP 14 SOUTH, RANGE 6 WEST, WILLAMETTE MERIDIAN; SECTION 21 CORNER NONE
DONATION LAND CLAIM ISAAC RAMBO NO. 62 CORNER NW
CONDITION REPORT ; REFERENCED OUT ; RENEWED XX ; SURVEYED IN

LOCATION AND COMMENTS:

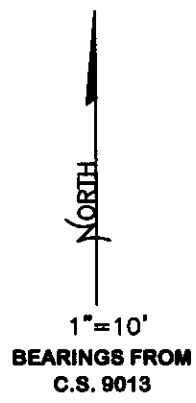
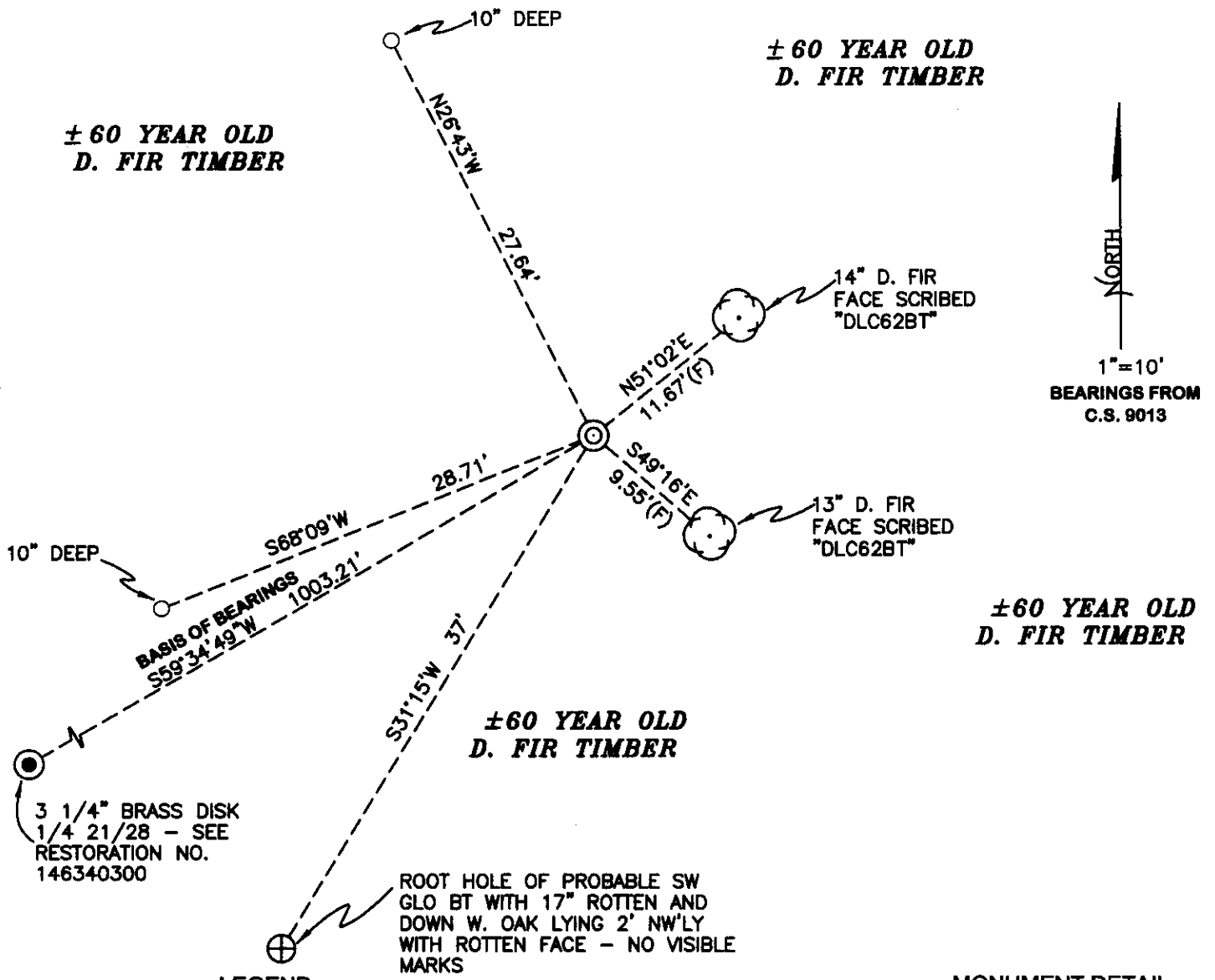
CORNER IS LOCATED IN A STAND OF ±60 YEAR OLD D. FIR ON A NORTEAST FACING SLOPE. TO REACH CORNER FROM THE JUNCTION OF GREEN PEAK ROAD AND HAWLEY CREEK ROAD, TRAVEL NORTHERLY ON GREEN PEAK ROAD FOR 1.49 MILES; THEN LEFT ON LOGGING SPUR (WEYCO ROAD NO. 105) FOR 0.46 MILES; THEN LEFT AND CONTINUE ON ROAD NO. 105 (PASSING THROUGH WEYCO GATE AT 0.20 MILES) FOR 0.29 MILES TO ROAD JUNCTION; THEN BEAR RIGHT AND CONTINUE ON ROAD NO. 105 FOR 0.65 MILES TO LOCATION TAG ON RIGHT SIDE OF ROAD NAILED TO A 16" D. FIR; THEN N41°W, 495 FEET TO CORNER. CORNER IS POOR FOR PREMARKING AND GPS CONTROL.

MONUMENTS AND ACCESSORIES FOUND (CONDITION AND SOURCE):

1. FOUND 1/2" IRON PIPE, 1" BELOW GROUND LEVEL FOR CORNER POSITION.
(SET POST WITH 2 BEARING TREES PER RECORD [01]).
(FOUND ORIGINAL STAKE PER RECORD [02]).
(SET 1/2" PIPE IN ORIGINAL HOLE PER RECORD [03]).
(1/2" PIPE PER RECORD [05] - [07] AND [09]).
2. FOUND 3 1/4" BRASS DISK ON 2" GALVANIZED IRON PIPE AT 1/4 CORNER COMMON TO SECTIONS 21 AND 28, S59°34'49"W, 1003.21 FEET. **BASIS OF BEARINGS** FOR THIS RESTORATION.
(1/2" PIPE, S59°49'18"W, 1002.30 FEET [CALCULATED] PER RECORD [05]).
(1/2" PIPE, S59°43'40"W, 1005.49 FEET [CALCULATED] PER RECORD [07]).
(1/2" PIPE, S59°34'49"W, 1003.12 FEET [CALCULATED] PER RECORD [09])
3. FOUND ROOT HOLE OF PROBABLE SW GLO BEARING TREE, S31°15'W, 37 FEET. 17" W. OAK LYING 2 FEET NE WITH ROTTEN FACE BUT NO VISIBLE SCRIBING COULD BE FOUND.
(12" OAK, S38°W, 37.62 FEET PER RECORD [01]).
(FOUND OAK S31 1/4°W, 37.22 FEET PER RECORDS [03] AND [06]).

MONUMENT SET (PROCEDURES AND DESCRIPTION):

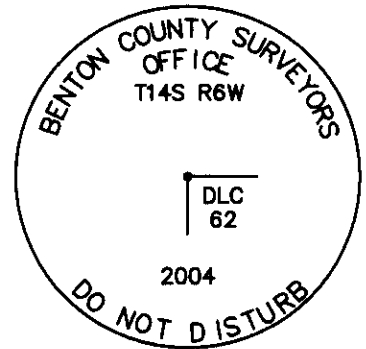
THE 1/2" IRON PIPE AS SET PER RECORD [03] WAS FOUND UNDISTURBED IN PLUM POSITION. WE HELD SAID 1/2" PIPE FOR CORNER POSITION. IN AN EFFORT TO REMOVE THE 1/2" PIPE, THE TOP 24" WAS BROKEN OFF. SET 2" X 31 1/2" GALVANIZED IRON PIPE OVER REMAINING SECTION OF 1/2" PIPE WITH A 3 1/4" BRASS DISK CONCRETED IN THE TOP, 6" BELOW GROUND LEVEL, MARKED AS SHOWN ON PAGE 2 OF 2. RESET 24" SECTION OF 1/2" PIPE ON THE SOUTH SIDE OF NEW MONUMENT, 10" BELOW GROUND LEVEL. SET 6 FOOT ORANGE CARSONITE "SURVEY MARKER" POST 0.5 FEET WEST OF NEW MONUMENT.



LEGEND

- SET 5/8" X 30" REBAR WITH YELLOW PLASTIC CAP MKD "BENTON COUNTY SURVEYOR"
- (F) MEASUREMENT TO FACE
- ⊙ GOVERNMENT MONUMENT SET AS SHOWN
- ⊙ GOVERNMENT MONUMENT FOUND AS SHOWN
- ⊙ BEARING TREE AS NOTED
- ⊕ ROOT HOLE

MONUMENT DETAIL



3 1/4" BRASS DISK

NEW ACCESSORIES:

1. SET REBAR (SEE LEGEND) 10" BELOW GROUND LEVEL N26°43'W, 27.64 FEET.
2. SET REBAR (SEE LEGEND) 10" BELOW GROUND LEVEL S68°09'W, 28.71 FEET.
3. 13" D. FIR FACE SCRIBED "DLC62BT" S49°16'E, 9.55 FEET TO FACE. SET ALUMINIUM NAIL AND PLASTIC WASHER IN BOTTOM OF FACE FOR DISTANCE AND ANGLE MEASUREMENT.
4. 14" D. FIR FACE SCRIBED "DLC62BT" N51°02'E, 11.67 FEET TO FACE. SET ALUMINUM NAIL AND PLASTIC WASHER IN BOTTOM OF FACE FOR DISTANCE AND ANGLE MEASUREMENT.

NOTES:

COMPASS DECLINATION IS 20° EAST. ALL MEASURED DISTANCES AND BEARINGS ARE TO THE CENTER OF THE OBJECT, UNLESS OTHERWISE NOTED. ALL BEARING TREES ARE PAINTED AND HAVE A B.T. TAG ATTACHED, FACING THE CORNER UNLESS OTHERWISE NOTED. ALL NEW BEARING TREES HAVE A PLASTIC WASHER (STAMPED "BENTON COUNTY SURVEYOR CORNER RESTORATION") ATTACHED (BY ALUMINIUM NAIL) TO THE FACE, BELOW THE "BT" FOR DISTANCE AND ANGLE MEASUREMENT UNLESS OTHERWISE NOTED. THE DRAWING IS FROM AUTOCAD RELEASE 2002.

THIS RESTORATION WAS PERFORMED AT THE DIRECTION AND APROVAL OF THE BENTON COUNTY SURVEYOR, RW

REGISTERED
PROFESSIONAL
LAND SURVEYOR

FIRM/AGENCY: BENTON COUNTY SURVEYOR'S OFFICE
 ADDRESS: 360 S.W. AVERY AVE. CORVALLIS OR 97333; PH. 766-6821
 PRESENT: DAVID M. DEAN, P.L.S. AND ADAM CASALEGNO, SURVEY TECH.
 EQUIPMENT: LEICA TCR 1105 WITH TDS ON BOARD

12/28/04 David M. Dean

OREGON
JULY 13, 1984
DAVID M. DEAN
2090

RENEWAL DATE: 12/31/05

CS. # 210
 Clearville Co
 T. W. Howley farm
 T. 14S. R. 6W
 June 16 - July 16 - 1914

N.W. Cor. W^m McLaughlin Cl 146 Set 1/2" iron oak post.
 Fir 10 (now 6) S. 80° E. 50' (15.584, 50) Mapk 12 (now 20) S. 45° E. 88' (15.539° E 88)

C. Surk

S. W. Cor. W^m McLaughlin Cl # 52 Set 8" x 6" x 14" stone
 Oak 14 (now 26) N. 6° E. 67' other tree completely gone

→ N. W. Cor. Isaac Rambo Cl 62. Set 1/2" pipe in original hole,
 Oak S. 38° W (15.312) 57 (15.584) Oak N. 40° W (15.443) 52 (15.511).

S. W. Cor. Isaac Rambo Cl 62. Stone 15" x 12" x 4" original hole
 Oak 18 (now 24) N. 8° E. 55'.
 Mark Oak 11. N. 58 1/2° W. 303

N. E. Cor. Isaac Rambo Cl 62 Stone 16" x 12" x 6"
 Old stumps N. 80° W. 281, N. 55° E. 5.18.
 Mark Oak 9 N. 83 3/4° W. 2.414, Oak 12. S. 61 3/4° W. 3.075

Cor. of secs. 22, 23, 26 & 27. Set 1/2" pipe
 Oak 20" N. 40 1/2° E. 12.75 (15.12.000) Oak 20. S. 73 3/4° E. 7.84

1/4 sec. cor. bet. secs. 22 & 23, set iron pipe, old cor. obliterated,
 set on true section equidistant from sec. corners.
 from which the S. E. Cor. of the W^m McLaughlin Cl 62 bears N. 88° 53' E. 23.00

W.C. to
 Cor. of secs. 14, 15, 22 & 23, set stone 18" x 10" x 8" 10/16 N. of true cor.
 large second growth fir stump stands in original position of sec. cor.
 Orig. the bears N. 62° E. 12.87 - 8 1/2" slope = 1.273 from W.C.
 Mark fir 24" S. 82 1/2° W. 1.135, fir 14. S. 70 3/4° E. 9.02, Oak 20" S. 83 1/2° W. 2.363

1/4 sec. cor. bet. secs. 21 & 22, set stone 16" x 8" x 6" from which
 Oak 7 (now 12) S. 3° W. 82. Alder gone
 Mark fir 20" N. 32 3/4° E. 2.932

1/4 sec. cor. bet. secs. 21 & 22. set 1/2" pipe
 Lound 13" N. 40° E. 124 (15.1232) Lound 14. S. 55° W. 54 (15.528)
 Mark fir 28" N. 70 1/2° W. 7.336 Yew 7" S. 60 3/4° W. 6.63

1/4 sec. cor. bet. secs. 21 & 22. set 5" x 12" x 22" stone from which
 Fir 36" S. 58° E. (15.594) standing stump 16 (now 30) S. 67° W (15.513) 10/16
 Mark fir 32" S. 86° W. 4.441

Cors. in Pa
n 18

1/4 sec. cor. bet. secs. 16 & 21. Original cor. was maple tree. Just south shell
 of tree remains. set stone 18" x 8" x 6" in center of hollowed out roots.
 Fir 16 (now 30) N. 52 1/2° E. 15 (15.156) Fir 7 (now 12) S. 52 1/2° W. 29 (15.301)
 Mark fir 16" S. 69 1/2° W. 30

Cor. of secs. 21, 22, 27 & 28, set 3/4" iron pipe
 Oak 16 (now 24) N. 32 3/4° W. 5.45, Oak 20 N. 51 3/4° E. 7.88, Oak 36 S. 64° E. 53
 Mark Oak 7, S. 62° W. 1.043

Witnesses on reestablishments in CS. 210, Ward Wilkes, Clair Wilkes, W.C. Graves

2415

N. W. corner Isaac Rambo Cl 62, Twp. 14-6

Reestablishment by W. C. Galloway

July 16, 1914

Set $\frac{1}{2}$ " pipe in original hole

Oak bears S 38° W ($31\frac{1}{4}^{\circ}$)

.574 chains (.564 chains)

Oak bears N. 48° W ($44\frac{3}{4}^{\circ}$)

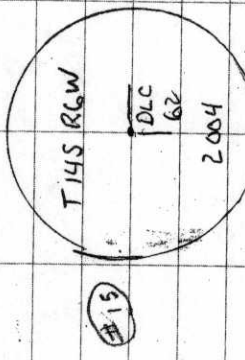
.52 chains (.511 chains)

OVERCAST, COOL
45°F 30-0" Hg
LEICA TCR 1105/TDS

12/16/04 22/74
D. DEAN
A. COSALEGNO

146862060
REMONUMENTING NW ISAAC RAMBO DLC #62

T195 R6W
Fd 1/2" x 7' IRON PIPE FLUSH WITH GROUND
LEVEL AS SET PER REST. BK1, PG 80 -
FIRMLY SET AND UNDISTURBED, FOUND
FD PROBABLE SW GLO BT - NOW ± 15"
DOWN AND ROTTEN OAK. OPENED TO
ROTTEN FACE - NO V.S. REMAIN.
HELD 1/2" IRON PIPE FOR TRUE COR
POSITION. BROKE TOP 24" OFF I.P.
WHEN ATTEMPTING TO REMOVE. SET
2" x 3 1/2" G.I.P. ~~OFF~~ OVER REMAINING
SECTION OF 1/2" I.P. SET 3 1/4" BRASS
DISK CONCRETE IN TOP, 6" BELOW
GROUND LEVEL, MARKED AS SHOWN.
RESET 24" SECTION OF 1/2" I.P. ON
S SIDE OF NEW MON IN PLUM
POSITION AND 10" BELOW GROUND LEVEL
SET 6' ORANGE CARSONITE "SURVEY MARKER"
PACT 05 WEST OF NEW MON.



3 1/4" BRASS DISK

