

146863050

2482 ✓
 2483 ✓
 2345

CORNER FILE TRACKING

H:\Survey\Corners\Misc\Filetrac2.doc
 06/15/2003

CORNER NUMBER
146863050

STEP	HISTORY()	RESTORATION()
Form Prepared, DB	8/01/07	8/8/07
Field Inspection, DB	8/6/07	8/6/07
Form Checked, DB	8/20/07	8/20/07
Form Edited, DB	8/23/07	8/23/07
Form Signed, DB	8/23/07	8/23/07
Counter Index	8/10/07	8/10/07
GIS Index	8/10/07	8/10/07
Authorize Payment, DB	—	—
Archive Digital Files	8/24/07	8/24/07
Collect Documents	8/24/07	8/24/07
Scanned		
Copy For Filming		
Filed, DB		
Finish index (count unit)	8/6/07	8/6/07
Filmed (Archived), DB		
Document No's to Andrew		

(DB) = Entry needed in database (Access).

COMMENTS:

DATE 09/01/2007

TOWNSHIP 14 SOUTH, RANGE 06 WEST, WILLAMETTE MERIDIAN; SECTION 02 CORNER NONE
 DONATION LAND CLAIM GEORGE SMITH NO. 63 CORNER NORTHEAST

COMMON CORNER(S):

NONE

RECORDS (INFORMATION IN BOLD ITALICS IS COUNTY STAFFS' INTERPRETATION OF THE RECORD)

BASED ON EXTENSIVE RESEARCH AND RECOVERY OF EVIDENCE, THIS OFFICE HAS DETERMINED THAT MOST GENERAL LAND OFFICE SURVEYORS MEASURED TO THE FACE OF BEARING TREES.

- [01] GENERAL LAND OFFICE (GLO) NOTES OF THE GEORGE SMITH DONATION LAND CLAIM (DLC) NO. 63 BY DENNIS HAHORN, D S , DATED FEBRUARY 06, 1855 *SET POST FOR N.E. COR. FROM WHICH A FIR 20" IN DIA. BEARS N4°E, 100 LKS (66 FEET); A FIR 36" IN DIA. BEARS N5°W, 100 LKS (66 FEET).*
- [02] COUNTY SURVEY NO 307 (OLD NO 149) FIELD NOTES (FIELD BOOK NO 13, PAGES 1-7) J A GANONG, D.C S., DATED APRIL 26, 1912. *N.E. COR. GEO. SMITH CL. 63. SET TWO STONES 7x5 AND 9x7; FIR 20" N69°20'W, 2.324 CHS. (154.38 FEET) N.E. TREE STANDING.*
- [03] BENTON COUNTY CORNER RESTORATION BOOK NO 1, PAGE 162 BY J A GANONG, D C.S , DATED APRIL, 1912 *N.E. CORNER OF GEO. SMITH D.L.C. 63, T.14S. R.6W. W.M. SET TWO STONES 5"x7" AND 7"x9". FIR 20" IN DIA. BEARS N4°E, 1.00 CHS. (66 FEET) STD.; FIR 20" IN DIA. BEARS N69°W, 2.324 CHS. (154.38 FEET). SEE ALSO RESTORATION NO. 2483 FOR TRANSCRIBED COPY OF BOOK 1, PAGE 162.*
- [04] BENTON COUNTY CORNER RESTORATION NO 2483 *TRANSCRIBED FORM RECORDS [03] AND MAY CONTAIN ERRORS AND/OR OMISSIONS.*
- [05] COUNTY SURVEY NO 854 (OLD NO 149) FIELD NOTES (FIELD BOOK NO 30, PAGES 1-3) BY W W LARSEN, D C S , DATED APRIL 27, 1923 *2 STONES; FIR 20" N4°E, 1.00 CHS (66 FEET); FIR 20" N69°20'W, 2.324 CHS (154.38 FEET).*
- [06] BENTON COUNTY MAP NO 14-6-00001 NO DATE OR DRAFTMAN GIVEN *2 STONES. FIR 20" N4°E, 1.00 CHS. (66 FEET); FIR 20" N69°10'W, 2.324 CHS. (154.38 FEET).*
- [07] BENTON COUNTY MAP NO 14-6-00002 NO DATE OR DRAFTMAN GIVEN. *2 STONES. FIR 20" N4°E, 1.00 CHS. (66 FEET); FIR 20" N69°10'W, 2.324 CHS. (154.38 FEET).*
- [08] BENTON COUNTY MAP NO 14-6-00003 NO DATE OR DRAFTMAN GIVEN *2 STONES. FIR 20" N4°E, 1.00 CHS. (66 FEET); FIR 20" N69°10'W, 2.324 CHS. (154.38 FEET).*
- [09] BENTON COUNTY MAP NO 14-6-00006 NO DATE OR DRAFTMAN GIVEN *2 STONES, 5"x7" AND 7"x9"; FIR 18" N69°10'W, 2.324 CHS: (154.38 FEET).*
- [10] COUNTY SURVEY NO 7133 BY R S CASTLEBERRY, P L S , DATED SEPTEMBER 12, 1980 *N.N.E. COR. GEORGE SMITH D.L.C. 63, SET 5/8"x30" IRON ROD. FOUND ROTTED 40" FIR STUMP N4°E, 66.00 FEET NO MARKS AND OLD BLOWN DOWN AT N.W. B.T. POSITION ROTTED CEDER POST 3.5 FEET EAST. BLAZED 2 FIR TREES 2 FEET AND 4 FEET HIGH. SET R.R. SPIKE IN EACH LOWER BLAZE: N33°57'E, 8.69 FEET TO R.R., 9.4 FEET TO CENTER OF 8" FIR; N56°23'W, 21.78 FEET TO R.R., 22.2 FEET TO CENTER OF 6" FIR.*
- [11] BENTON COUNTY CORNER RESTORATION NO 2345 BY R S CASTLEBERRY, P L S , DATED JULY 9, 1965 *5/8"x30" IRON ROD. FIR 40" N4°E, 66 FEET; ROTTED CEDER POST EAST, 3.5 FEET; FIR 8" N33°57'E, 8.69 FEET TO FACE, 9.4 FEET TO CENTER, R.R. SPIKE; FIR 6" N56°23'E, 21.78 FEET TO FACE, 22.2 FEET TO CENTER, R.R. SPIKE. SEE ALSO RESTORATION NO. 2482 FOR TRANSCRIBED COPY OF RESTORATION NO. 2345.*
- [12] COUNTY SURVEY NO 8775 BY ROBERT E FINDORFF, P L S , DATED NOVEMBER 27, 1993 *FD. 5/8" REBAR AT N.N.E. D.L.C. 63 (CS 7133).*

NOTES:

THIS IS A MICROSOFT WORD 2003 DOCUMENT NAMED "46863050" CREATED FROM A BOILER PLATE DOCUMENT NAMED "HISTORY", WHICH HAS A STYLESHEET NAMED "CORNER" ATTACHED TO IT

FIRM/AGENCY: BENTON COUNTY SURVEYOR'S OFFICE
ADDRESS: 360 S W AVERY AVE CORVALLIS OR 97333, PH 766-6821
RESEARCH BY: CODY WHEELER, SURVEY TECH
DATA ENTRY BY: SAME

BENTON COUNTY CORNER RESTORATION FORM, PAGE 1 OF 2, 140063050R2

SEE CORNER HISTORY FORM FOR RECORDS ETC.

CORNER RESTORATION FIELD BOOK NUMBER 25 PAGE(S) 58 DATE 08/06/2007
TOWNSHIP 14 SOUTH, RANGE 6 WEST, WILLAMETTE MERIDIAN; SECTION 02 CORNER NONE
DONATION LAND CLAIM GEORGE SMITH NO. 63 CORNER NORTHEAST
CONDITION REPORT ; REFERENCED OUT ; RENEWED XX; SURVEYED IN

LOCATION AND COMMENTS:

CORNER IS LOCATED ON A STEEP NORTH FACING SLOPE IN A MATURE STAND OF CONIFER TIMBER AND APPROXIMATELY 150 FEET SOUTH OF A PRIVATE LOGGING ROAD TO REACH CORNER FROM THE JUNCTION OF DAWSON AND REESE CREEK ROADS, TRAVEL NORTHERLY ON REESE CREEK ROAD FOR 1.32 MILES, THEN LEFT ON PRIVATE LOGGING ROAD (PASSING THROUGH LOCKED GATE) FOR 0.09 MILES TO LOCATION TAG ON 9" D FIR ON THE NORTH SIDE OF ROAD, THEN S20°E, 209 FEET TO CORNER. CORNER IS POOR FOR PREMARKING AND GPS CONTROL.

MONUMENTS AND ACCESSORIES FOUND (CONDITION AND SOURCE):

- 1 FOUND 5/8" X 30" IRON ROD, 1" ABOVE GROUND LEVEL FOR CORNER POSITION
(SET 5/8" IRON ROD AT RECORD BEARING AND DISTANCE FOR THE NORTHEAST GLO BEARING TREE PER RECORDS [09] AND [10])
- 2 FOUND ±48" ROTTEN D FIR STUMP, N3°38'39"E, 64.91 FEET TO ORIGINAL FACE. WE OPENED TO VISIBLE SCRIBING "4S 6W BT"
(20" FIR, N4°E, 66.0 FEET PER RECORD [01])
(NORTHEAST TREE STANDING PER RECORD [02])
(20" FIR, N4°E, 66.0 FEET PER RECORDS [03] - [07])
(40" ROTTEN FIR STUMP, N4°E, 66.0 FEET, NO MARKS PER RECORD [09])
(40" FIR, N4°E, 66.0 FEET PER RECORD [10])
- 3 FOUND 13" X 10" X 8" STONE AT THE NORTHWEST CORNER OF THE GEORGE SMITH DLC NO. 63, S89°51'32"W, 2643.03 FEET
(WEST, 2640.0 FEET PER RECORD [01])
(N89°59'W, 2640.20 FEET PER RECORDS [05] - [07])
(12" X 10" X 8" STONE, N89°55'W, 2640.20 FEET PER RECORD [08])
- 4 FOUND 9" X 5" X 5 1/2" UNMARKED STONE 4" BELOW GROUND LEVEL AND 2.25 FEET SOUTH OF ABOVE NOTED 5/8" IRON ROD
(SET 2 STONES, 7" X 5" AND 7" X 9" PER RECORDS [02] AND [03])
(TWO STONES PER RECORDS [04] - [08]).
- 5 FOUND 10" W FIR WITH RAILROAD SPIKE IN SOUTHWEST FACE AND 2 FEET ABOVE GROUND LEVEL, N34°17'E, 8.62 FEET TO RAILROAD SPIKE
(BLAZED 8" FIR, N33°57'E, 8.69 FEET TO RAILROAD SPIKE IN FACE AND 9.4 FEET TO CENTER PER RECORDS [09] AND [10])

MONUMENT SET (PROCEDURES AND DESCRIPTION):

NO EVIDENCE OF GLO MONUMENT, NORTHWEST GLO BEARING TREE OR COUNTY SURVEYOR'S BEARING TREE COULD BE FOUND AFTER A THROUGH SEARCH OF THE AREA. THE UNMARKED STONE FOUND 2.25 FEET SOUTH OF THE 5/8" IRON ROD MAY BE THE BOTTOM STONE OF THE TWO STONES SET PER RECORD [02], AS THE SIZE COMPARES CLOSELY WITH THAT RECORD. HOWEVER, WE HAVE DETERMINED THIS STONE TO BE INCLUSIVE EVIDENCE OF WHERE RECORD [02] REESTABLISHED THE SUBJECT CORNER.

WE HAVE DETERMINED TO HOLD THE 5/8" IRON ROD SET PER RECORD [10] FOR THE TRUE CORNER POSITION BASED ON THE FOLLOWING:

- 1 THE BEARING AND DISTANCE COMPARES WELL WITH THE RECOVERED NORTHEAST GLO BEARING TREE
- 2 THE BEARING AND DISTANCE TO THE NORTHWEST CORNER OF THIS CLAIM COMPARE WELL WITH RECORDS [02] - [08]
- 3 THE SURVEYOR OF RECORD [10] MADE A GOOD FAITH EFFORT TO REESTABLISH THE SUBJECT CORNER FROM ORIGINAL EVIDENCE
- 4 CORNER HAS OVER 40 YEARS OF ACCEPTANCE AND USAGE

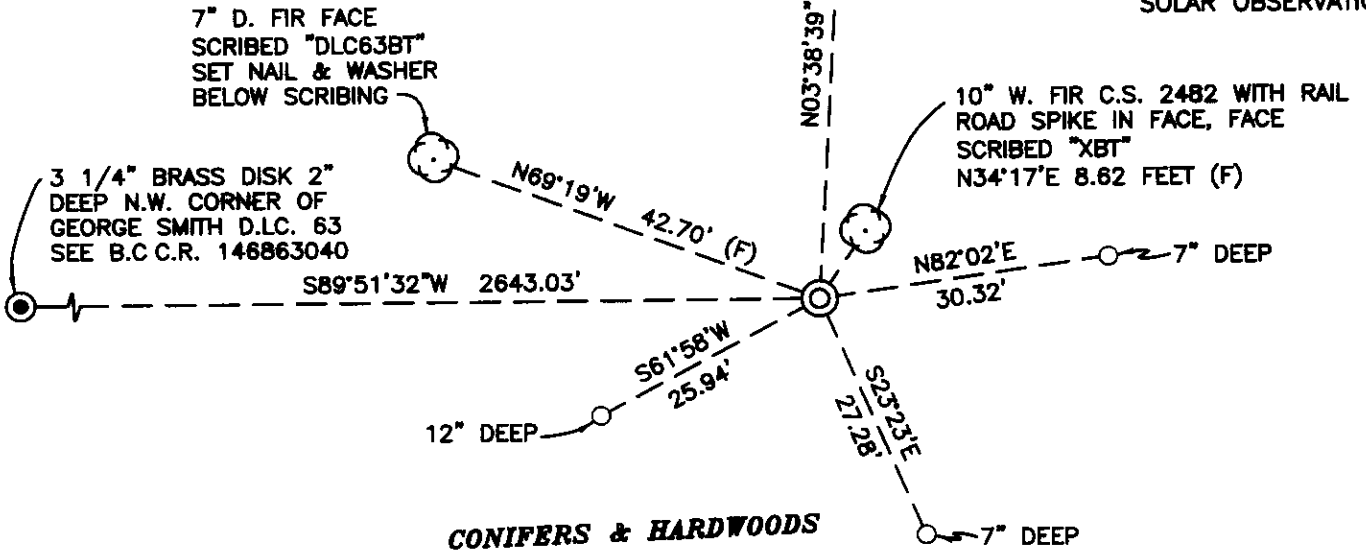
REMOVED THE 5/8" X 30" IRON ROD AND SET A 2" X 3 1/2" GALVANIZED IRON PIPE WITH A 3 1/4" BRASS DISK CONCRETED IN THE TOP, 2" BELOW GROUND LEVEL AND MARKED AS SHOWN ON PAGE 2 OF 2. SET A 6 FOOT ORANGE CARSONITE "SURVEY MARKER" POST 0.5 FEET SOUTH OF NEW MONUMENT. THE 5/8" X 30" IRON ROD WAS RESET AS THE NORTHEAST REFERENCE.

CONIFERS & HARDWOODS

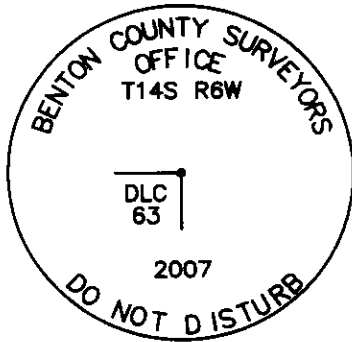
±48" ROTTEN D. FIR STUMP
GLO B.T. WITH VISIBLE
SCRIBING "4S6WBT"



1"=20'
BASIS OF BEARING
SOLAR OBSERVATION



MONUMENT DETAIL



3 1/4" BRASS DISK

LEGEND

- SET 5/8" X 30" REBAR WITH YELLOW PLASTIC CAP MKD "BENTON COUNTY SURVEYOR"
- (F) MEASUREMENT TO FACE
- ⊙ GOVERNMENT MONUMENT SET AS SHOWN
- ⊙ GOVERNMENT MONUMENT FOUND AS SHOWN
- ⊙ BEARING TREE AS NOTED
- C.S.B.T. COUNTY SURVEYORS BEARING TREE
- GLO GENERAL LAND OFFICE
- ⊙ BEARING TREE STUMP AS NOTED
- B.C.C.R. BENTON COUNTY CORNER RESTORATION

NEW ACCESSORIES:

1. SET REBAR (SEE LEGEND) 12" BELOW GROUND LEVEL S61°58'W 25.94 FEET.
2. SET REBAR (SEE LEGEND) 7" BELOW GROUND LEVEL S23°23'E 27.28 FEET
3. SET REBAR (SEE LEGEND) 7" BELOW GROUND LEVEL N82°02'E 30.32 FEET.
4. FACE SCRIBED 7" D. FIR, N69°19'W 42.70 FEET. SET ALUMINUM NAIL & PLASTIC WASHER IN BOTTOM OF BLAZE BELOW SCRIBING FOR DISTANCE & ANGLE MEASUREMENT.
5. FACE SCRIBED 10" D. FIR, N34°18'E 8.62 FEET. USED RAIL ROAD SPIKE FOR DISTANCE & ANGLE MEASUREMENT.

NOTES:

COMPASS DECLINATION IS 20° EAST. ALL MEASURED DISTANCES AND BEARINGS ARE TO THE CENTER OF THE OBJECT, UNLESS OTHERWISE NOTED. ALL BEARING TREES ARE PAINTED AND HAVE A B.T. TAG ATTACHED, FACING THE CORNER UNLESS OTHERWISE NOTED. ALL NEW BEARING TREES HAVE A PLASTIC WASHER (STAMPED "BENTON COUNTY SURVEYOR CORNER RESTORATION") ATTACHED (BY ALUMINUM NAIL) TO THE FACE, BELOW THE "BT" FOR DISTANCE AND ANGLE MEASUREMENT UNLESS OTHERWISE NOTED. THE DRAWING IS FROM AUTOCAD RELEASE 2006.

THIS RESTORATION WAS PERFORMED AT THE DIRECTION AND APROVAL OF THE BENTON COUNTY SURVEYOR. David M. Dean

FIRM/AGENCY BENTON COUNTY SURVEYOR'S OFFICE
 ADDRESS 360 S.W. AVERY AVE. CORVALLIS OR 97333; PH. 766-6821
 PRESENT: DAVID M. DEAN, P.L.S. AND BERNIE ALTENBACH AND CODY WHEELER
 SURVEY TECH'S
 EQUIPMENT LEICA TCR 1105/TDS WITH RECON DATA COLLECTOR

REGISTERED
PROFESSIONAL
LAND SURVEYOR

8/23/07 David M. Dean

OREGON
JULY 13, 1984
DAVID M. DEAN
2090

RENEWAL DATE: 12/31/07

C.S. 149
J.A. Genong D.C.S.
April 1912

N.E. corner of Geo. Smith D.L.C. 63, T. 14 S. R. 6 W. W.M.

Set two stones 5"x7" & 7"x9"

Fir 20" in dia. bears N. 40° E. 1.00 chs. std.
" 20" " " N. 69° 20' W. 2.324 chs.

N.W. corner of Geo. Smith D.L.C. 63 T 14-6

Set stone 12"x10"x8"

Fir 12" in dia. bears S. 48° E. .811 chs.
" 8" " " S. 24° W. 1.480 "

S.E. corner of Samuel Hapenstall D.L.C. #55 T. 14-6

Set a stone 13"x6"x6"

Fir 24" in dia. bears N. 6° W. .88 chs. std.
" 50" " " N. 1° E. .98 " "

N.E. corner of Samuel Hapenstall D.L.C. 55 T. 14-6

Fir 24" in dia. for corner standing.

" 24" " " bears N. 5° E. .10 chs. Govt. tree.
Oak 16" " " S. 0° 15' W. 1.04 " "

S.E. corner of James McCoy D.L.C. 60 T. 14-6

Set 4"x4"x36" oak stake both trees down.

Fir 9" in dia. bears N. 3° 20' W. .285 chs.
" 15" " " S. 82° E. .968 "

S.W. corner of Orrin Belknap D.L.C. 56 T 14-6

Stone 8"x12"x20", 1/2" shift S. 1/2" 30', 3/4" Pipe N. 1/2" 30' and Nail in root of oak 15' on W. side.

Oak 24" in dia. bears N. 30° W. .168 chs. Govt. tree.

Geo. Mercer
Mar 20, 1898

~~1/4 Cor. betw 32 & 33, T. 14 S. R. 5 W.~~

~~Set stone 10"x12"x16" part of old mill butt
Found stump and one bearing which agrees
to measurement~~

C.S. 245 con
N.W. Larsen
Reuben Matfield
dal.

N.W. corner Sec. 6 T. 14 S. R. 4 W. W.M.

corner is 8.055 East and of a 1" rod which
is the S.E. cor sec. 36 T. 13 S. R. 5 W. and .374 S. E. W.
of a 3/4" pipe on fence line

Meander cor on W. bank Will. Riv 31.152 S. 82° 59' E of
S.W. cor. sec 31 T 13 S R 4 W W.M.

Set stake at waters edge.

stake N. 1.420 - stakes on line E. & W.

N.C. to N.E. Cor. Sec 36 T 13 S R 5 W. W.M. 1/2" on line N.E. may be used as cor.

Set 1/2" rate tooth

30" Balm S.W. 1.150

" N.W. 1.000

about 1.00 betw. trees

N. E. corner of George Smith DLC 63, Twp. 14 S., R. 6 W. W. M. **2483**

Reestablishment by J. A. Ganong

April 1912

Set two stones 5" x 7" and 7" x 9"

Fir 20" in diam bears N 4° E

1.00 chains(standing)

Fir 20" in diam bears N 69° 20' W

2.324 chains

Witness Bristow

BENTON COUNTY SURVEYORS OFFICE - CORNER RESTORATION

2345

T. 14 S. R. E W. W. B. & M., BENTON COUNTY, OREGON

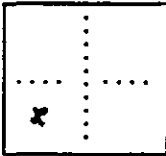
REPORTED BY R. S. CASTLEBERRY

SECTION 2

The information shown hereon was taken from the referenced county survey. Date: 7/30/90

TITLE O.L.S. # 684

DATE SEPT. 12, 1980



● OFFICIAL CORNER FOUND

○ ✓ CORNER SET

^{1/4}
D&E CORNER COMMON TO SEC. 2
50° 13' 30" ROUNDED @ N.N.E. CORNER OF THE
GEORGE SMITH DESCRIBE P.L.C. # 63

ADDITIONAL INFORMATION

C.S. #82 (GALLOWAY) CALLS TWO
STONES AT CORNER & TWO BTs.
BOTH BTs FALL IN GROVE OF TREES
(MOSTLY FIR), SIZES 8" to 12".
FOUND ROTTED FIR STUMP N4°E. 66.0'
WITH NO MARKS & NO OTHER STUMPS
NEAR-BY. STONES NOT FOUND
FOUND DEAD BLOWDOWN @ N.W. BT
POSITION WITH NO OTHER TREE REMAINS
NEAR-BY. SEE C.S. # 7133,
FOUND ROTTED CEDAR POST 3.5 EAST OVER

LEGIBLE MARKS ON BEARING OBJECTS

KIND	<u>FIR</u>		<u>FIR</u>
SIZE	<u>8"</u>		<u>6"</u>
BEARING	<u>N33°57'E</u>		<u>N66°25'W</u>
DISTANCE	<u>9.4'</u>		<u>22.2'</u>
BT-TAG POSTED	<u>8-69</u>		<u>21-78 to</u>
	<u>TO R.R. SPIKE</u>		<u>RR. SPIKE</u>

BLAZED TWO FIR TREES, SET
R.R. SPIKE IN LOWER BLAZE.

10A

BENTON COUNTY SURVEYORS OFFICE - CORNER RESTORATION

2482

T 14 S, R 6 W, W. B. & M., BENTON COUNTY, OREGON

REPORTED BY R.S. CASTLE BERRY

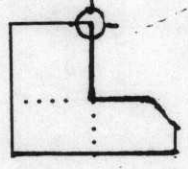
SECTION 2

The information shown hereon was taken from the referenced county survey. Date: 7/30/90
No. 7133

TITLE PROF. LAND SURVEYOR

DATE JULY 9, 1965

CURRENT DATE - SEPT. 16, 1980



- OFFICIAL CORNER FOUND
- CORNER SET

NNE CORNER COMMON TO SEC. 2
IS 5/8 X 30" IRON ROD
DESCRIBE

ADDITIONAL INFORMATION

NNE CORNER GEORGE SMITH
DLC 03

OVER

LEGIBLE MARKS ON BEARING OBJECTS

	ORIG.	ORIG.	NEW	NEW
KIND	FIR	ROTTED CEDAR POST	FIR	FIR
SIZE	40"		8"	6"
BEARING	N4°E	E	N33°57'E	N56°23'V
DISTANCE	66.0'	3.5'	8.69 FACE 9.4 CL	21.78 FACE 22.2 CL
BT TAG POSTED			R.R. SPIKE	RR SPIKE

146863050

REMONUMENTING NAME GEORGE SMITH

DLC 63 T145 R6W

FD 5/8" X REBAR 1' ABOVE GR LEVEL - CS 182
UNMARKED

FD 4' X 5' X 5/8" STONE 4" X 4' 2.25' S'LY
OF REBAR STONE POSSIBLY GRANOW'S

SUBSURFACE STONE BUT INCONCLUSIVE

FD 1 48' ROTTEN D FIR STUMP OF
WIND TOWER - GLO BIT W/US. 45' 6W BT

ON UPPER & LOWER SLATE RECORD BNG
& DIST (NW 1/4 6610) FALLS BETWEEN

ROD & STONE FD 1 CS 2482 BIT W/RAIL -
ROAD SPIKE IN FC 2 ABOVE GR LEVEL

HELD CS 2482 IR FOR COR. POSITION
AS GOOD FAITH EFFORT TO REESTABLISH

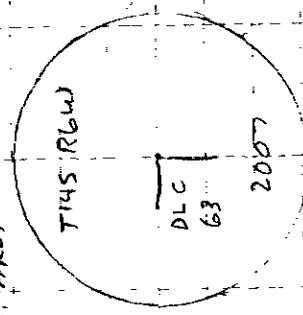
SUBJECT DLC COR - REMOVED IR AND
SET 2" X 3 1/2" G.I.P. W/ 3/4" BRASS

DISK CON. IN TOP, MKD AS SHOWN
AND 2' BELOW GR LEVEL

REMOVED I.R. FROM AREAS

SET 6' ORANGE
CARBONITE 02 S

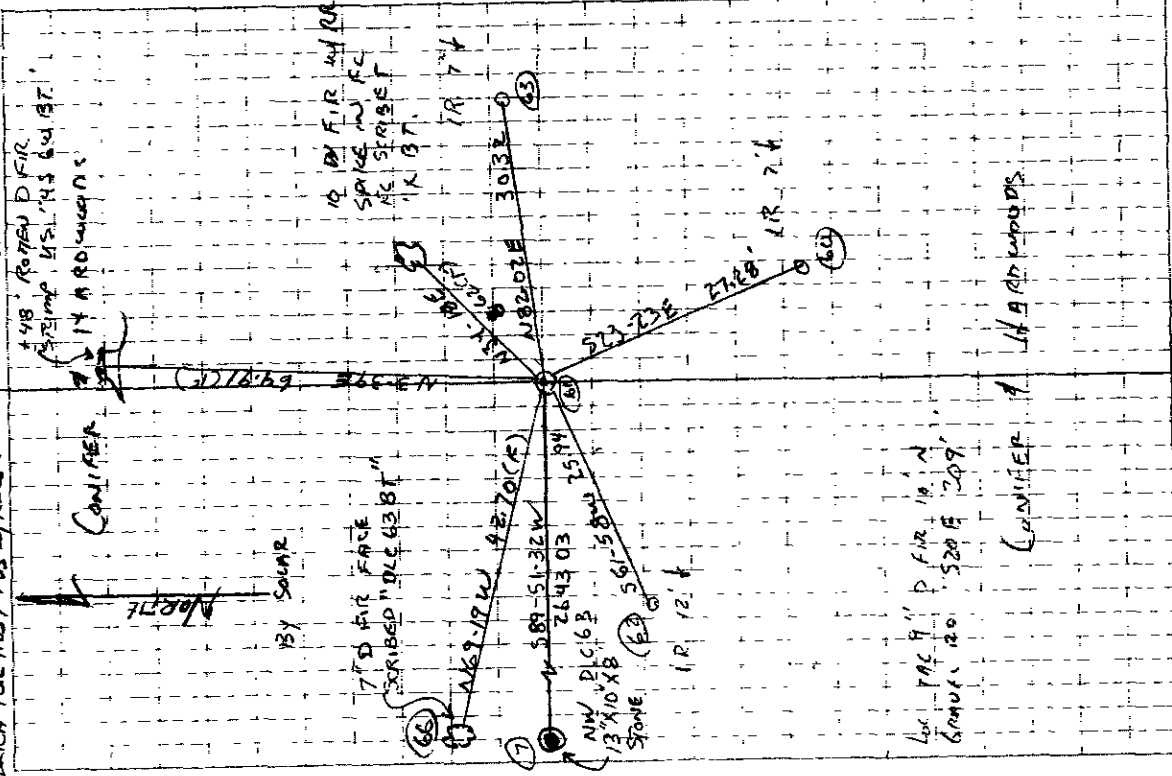
1/4" IR



3/4 BRASS DISK

8/16/07 25/58

D DEAN
B. ALTENBACH
C. WITKELER



CLDY, MILD

70° F, 29.8° Hg

LEACH TR 1105 / TDS W/RECON

CONIFER

PLANT

BY SQUARE

7' D FIR FACE
SCRIBED 10.43 BT

1 48' ROTTEN D FIR STUMP

10' D FIR W/RAIL
SPIKE IN FC

1 1/2' X 3 1/2' G.I.P.

2' X 3 1/2' G.I.P.

4' X 5' X 5/8" STONE

IR 12' F

IR 12' F

IR 12' F

IR 12' F

IR 12' F

IR 12' F

IR 12' F

IR 12' F

IR 12' F

IR 12' F

IR 12' F

IR 12' F

IR 12' F

IR 12' F

IR 12' F

IR 12' F

IR 12' F

CORNER RESEARCH

AUTHOR:

TOWNSHIP: 14-6

CORNER: N/E DLC 63

CORNER NO. 146863050

DATE

SURVEYS:

0) SEE ATTACHED

1)

2)

3)

4)

5)

6)

7)

8)

9)

10)

11)

12)

13)

14)

15)

16)

ANDREW PORTER SURVEYS:

SURVEY FIELD BOOKS: ~~24-4~~, 24-39, 30-1,

GALLOWAY HARDCOPIES:

SUBDIVISIONS:

PARTITION'S:

COUNTY ROADS:

OTHER ROADS AND HWY'S:

CORNER REST. BK1: 167

OTHER RESTORATIONS: 2002

BPA:

RAILROADS:

GLO NOTES:

MISC. RECORDS:

COMMENTS:

DocNumber	Name	Type
CS8775	CS8775	SURVEY
CS182	CS182	SURVEY
CS307	CS307	SURVEY
G13600017	G13600017	GALLOWAY
G14600001	G14600001	GALLOWAY
G14600002	G14600002	GALLOWAY
G14600003	G14600003	GALLOWAY
G14600005	G14600005	GALLOWAY
CS2255	CS2255	SURVEY

← SEE SURVEY TECH FOR COPY

G14600006

Galloway

DATE 09/01/2007TOWNSHIP 14 SOUTH, RANGE 06 WEST, WILLAMETTE MERIDIAN; SECTION 02 CORNER NONE
DONATION LAND CLAIM GEORGE SMITH NO. 63 CORNER NORTHEAST**COMMON CORNER(S):**

NONE

RECORDS (INFORMATION IN BOLD ITALICS IS COUNTY STAFFS' INTERPRETATION OF THE RECORD)

BASED ON EXTENSIVE RESEARCH AND RECOVERY OF EVIDENCE, THIS OFFICE HAS DETERMINED THAT MOST GENERAL LAND OFFICE SURVEYORS MEASURED TO THE FACE OF BEARING TREES

- [01] GENERAL LAND OFFICE (GLO) NOTES OF THE GEORGE SMITH DONATION LAND CLAIM (DLC) NO 63 BY DENNIS HAHORN, D S , DATED FEBRUARY 06, 1855 *SET POST FOR N.E. COR. FROM WHICH A FIR 20" IN DIA. BEARS N4°E, 100 LKS (66 FEET); A FIR 36" IN DIA. BEARS N5°W, 100 LKS (66 FEET).*
- [02] COUNTY SURVEY NO 307 (OLD NO 149) FIELD NOTES (FIELD BOOK NO 13, PAGES 1-7) J A GANONG, D C S , DATED APRIL 26, 1912 *N.E. COR. GEO. SMITH CL. 63. SET TWO STONES 7X5 AND 9X7; FIR 20" N69°20'W, 2.324 CHS. (154.38 FEET) N.E. TREE STANDING.*
- [03] BENTON COUNTY CORNER RESTORATION BOOK NO 1, PAGE 162 BY J A GANONG, D C S , DATED APRIL, 1912 *N.E. CORNER OF GEO. SMITH D.L.C. 63, T.14S. R.6W. W.M. SET TWO STONES 5"X7" AND 7"X9". FIR 20" IN DIA. BEARS N4°E, 1.00 CHS. (66 FEET) STD.; FIR 20" IN DIA. BEARS N69°W, 2.324 CHS. (154.38 FEET). SEE ALSO RESTORATION NO. 2483 FOR TRANSCRIBED COPY OF BOOK 1, PAGE 162.*
- [04] BENTON COUNTY CORNER RESTORATION NO 2483 *TRANSCRIBED FORM RECORDS [03] AND MAY CONTAIN ERRORS AND/OR OMISSIONS.*
- [05] COUNTY SURVEY NO 854 (OLD NO 149) FIELD NOTES (FIELD BOOK NO 30, PAGES 1-3) BY W W LARSEN, D C S , DATED APRIL 27, 1923 *2 STONES; FIR 20" N4°E, 1.00 CHS (66 FEET); FIR 20" N69°20'W, 2.324 CHS (154.38 FEET).*
- [06] BENTON COUNTY MAP NO 14-6-00001 NO DATE OR DRAFTMAN GIVEN *2 STONES. FIR 20" N4°E, 1.00 CHS. (66 FEET); FIR 20" N69°10'W, 2.324 CHS. (154.38 FEET).*
- [07] BENTON COUNTY MAP NO 14-6-00002 NO DATE OR DRAFTMAN GIVEN *2 STONES. FIR 20" N4°E, 1.00 CHS. (66 FEET); FIR 20" N69°10'W, 2.324 CHS. (154.38 FEET).*
- [08] BENTON COUNTY MAP NO 14-6-00003 NO DATE OR DRAFTMAN GIVEN *2 STONES. FIR 20" N4°E, 1.00 CHS. (66 FEET); FIR 20" N69°10'W, 2.324 CHS. (154.38 FEET).*
- [09] BENTON COUNTY MAP NO 14-6-00006 NO DATE OR DRAFTMAN GIVEN *2 STONES, 5"X7" AND 7"X9"; FIR 18" N69°10'W, 2.324 CHS. (154.38 FEET).*
- [10] COUNTY SURVEY NO 7133 BY R S CASTLEBERRY, P L S , DATED SEPTEMBER 12, 1980 *N.N.E. COR. GEORGE SMITH D.L.C. 63, SET 5/8"X30" IRON ROD. FOUND ROTTED 40" FIR STUMP N4°E, 66.00 FEET NO MARKS AND OLD BLOWN DOWN AT N.W. B.T. POSITION ROTTED CEDER POST 3.5 FEET EAST. BLAZED 2 FIR TREES 2 FEET AND 4 FEET HIGH. SET R.R. SPIKE IN EACH LOWER BLAZE: N33°57'E, 8.69 FEET TO R.R., 9.4 FEET TO CENTER OF 8" FIR; N56°23'W, 21.78 FEET TO R.R., 22.2 FEET TO CENTER OF 6" FIR.*
- [11] BENTON COUNTY CORNER RESTORATION NO 2345 BY R S CASTLEBERRY, P L S , DATED JULY 9, 1965 *5/8"X30" IRON ROD. FIR 40" N4°E, 66 FEET; ROTTED CEDER POST EAST, 3.5 FEET; FIR 8" N33°57'E, 8.69 FEET TO FACE, 9.4 FEET TO CENTER, R.R. SPIKE; FIR 6" N56°23'E, 21.78 FEET TO FACE, 22.2 FEET TO CENTER, R.R. SPIKE. SEE ALSO RESTORATION NO. 2482 FOR TRANSCRIBED COPY OF RESTORATION NO. 2345.*
- [12] COUNTY SURVEY NO 8775 BY ROBERT E FINDORFF, P L S , DATED NOVEMBER 27, 1993 *FD. 5/8" REBAR AT N.N.E. D.L.C. 63 (CS 7133).*

NOTES:

THIS IS A MICROSOFT WORD 2003 DOCUMENT NAMED "46863050" CREATED FROM A BOILER PLATE DOCUMENT NAMED "HISTORY", WHICH HAS A STYLESHEET NAMED "CORNER" ATTACHED TO IT

FIRM/AGENCY: BENTON COUNTY SURVEYOR'S OFFICE
ADDRESS: 360 S W AVERY AVE CORVALLIS OR 97333, PH 766-6821
RESEARCH BY: CODY WHEELER, SURVEY TECH
DATA ENTRY BY: SAME

BENTON COUNTY CORNER RESTORATION FORM, PAGE 1 OF 2, 146863050R2**SEE CORNER HISTORY FORM FOR RECORDS ETC.**

CORNER RESTORATION FIELD BOOK NUMBER 25 PAGE(S) 58 DATE 08/06/2007
TOWNSHIP 14 SOUTH, RANGE 6 WEST, WILLAMETTE MERIDIAN; SECTION 02 CORNER NONE
DONATION LAND CLAIM GEORGE SMITH NO. 63 CORNER NORTHEAST
CONDITION REPORT ____; REFERENCED OUT ____; RENEWED XX; SURVEYED IN ____

LOCATION AND COMMENTS:

CORNER IS LOCATED ON A STEEP NORTH FACING SLOPE IN A MATURE STAND OF CONIFER TIMBER AND APPROXIMATELY 150 FEET SOUTH OF A PRIVATE LOGGING ROAD TO REACH CORNER FROM THE JUNCTION OF DAWSON AND REESE CREEK ROADS, TRAVEL NORTHERLY ON REESE CREEK ROAD FOR 1.32 MILES, THEN LEFT ON PRIVATE LOGGING ROAD (PASSING THROUGH LOCKED GATE) FOR 0.09 MILES TO LOCATION TAG ON 9" D FIR ON THE NORTH SIDE OF ROAD, THEN S20°E, 209 FEET TO CORNER. CORNER IS POOR FOR PREMARKING AND GPS CONTROL.

MONUMENTS AND ACCESSORIES FOUND (CONDITION AND SOURCE):

- 1 FOUND 5/8" X 30" IRON ROD, 1" ABOVE GROUND LEVEL FOR CORNER POSITION
(SET 5/8" IRON ROD AT RECORD BEARING AND DISTANCE FOR THE NORTHEAST GLO BEARING TREE PER RECORDS [09] AND [10])
- 2 FOUND ±48" ROTTEN D FIR STUMP, N3°38'39"E, 64.91 FEET TO ORIGINAL FACE. WE OPENED TO VISIBLE SCRIBING "4S 6W BT"
(20" FIR, N4°E, 66.0 FEET PER RECORD [01])
(NORTHEAST TREE STANDING PER RECORD [02])
(20" FIR, N4°E, 66.0 FEET PER RECORDS [03] - [07])
(40" ROTTEN FIR STUMP, N4°E, 66.0 FEET, NO MARKS PER RECORD [09])
(40" FIR, N4°E, 66.0 FEET PER RECORD [10])
- 3 FOUND 13" X 10" X 8" STONE AT THE NORTHWEST CORNER OF THE GEORGE SMITH DLC NO. 63, S89°51'32"W, 2643.03 FEET
(WEST, 2640.0 FEET PER RECORD [01])
(N89°59'W, 2640.20 FEET PER RECORDS [05] - [07])
(12" X 10" X 8" STONE, N89°55'W, 2640.20 FEET PER RECORD [08])
- 4 FOUND 9" X 5" X 5 1/2" UNMARKED STONE 4" BELOW GROUND LEVEL AND 2.25 FEET SOUTH OF ABOVE NOTED 5/8" IRON ROD
(SET 2 STONES, 7" X 5" AND 7" X 9" PER RECORDS [02] AND [03])
(TWO STONES PER RECORDS [04] - [08])
- 5 FOUND 10" W FIR WITH RAILROAD SPIKE IN SOUTHWEST FACE AND 2 FEET ABOVE GROUND LEVEL, N34°17'E, 8.62 FEET TO RAILROAD SPIKE
(BLAZED 8" FIR, N33°57'E, 8.69 FEET TO RAILROAD SPIKE IN FACE AND 9.4 FEET TO CENTER PER RECORDS [09] AND [10])

MONUMENT SET (PROCEDURES AND DESCRIPTION):

NO EVIDENCE OF GLO MONUMENT, NORTHWEST GLO BEARING TREE OR COUNTY SURVEYOR'S BEARING TREE COULD BE FOUND AFTER A THROUGH SEARCH OF THE AREA. THE UNMARKED STONE FOUND 2.25 FEET SOUTH OF THE 5/8" IRON ROD MAY BE THE BOTTOM STONE OF THE TWO STONES SET PER RECORD [02], AS THE SIZE COMPARES CLOSELY WITH THAT RECORD. HOWEVER, WE HAVE DETERMINED THIS STONE TO BE INCLUSIVE EVIDENCE OF WHERE RECORD [02] REESTABLISHED THE SUBJECT CORNER.

WE HAVE DETERMINED TO HOLD THE 5/8" IRON ROD SET PER RECORD [10] FOR THE TRUE CORNER POSITION BASED ON THE FOLLOWING:

- 1 THE BEARING AND DISTANCE COMPARES WELL WITH THE RECOVERED NORTHEAST GLO BEARING TREE
- 2 THE BEARING AND DISTANCE TO THE NORTHWEST CORNER OF THIS CLAIM COMPARE WELL WITH RECORDS [02] - [08]
- 3 THE SURVEYOR OF RECORD [10] MADE A GOOD FAITH EFFORT TO REESTABLISH THE SUBJECT CORNER FROM ORIGINAL EVIDENCE
- 4 CORNER HAS OVER 40 YEARS OF ACCEPTANCE AND USAGE

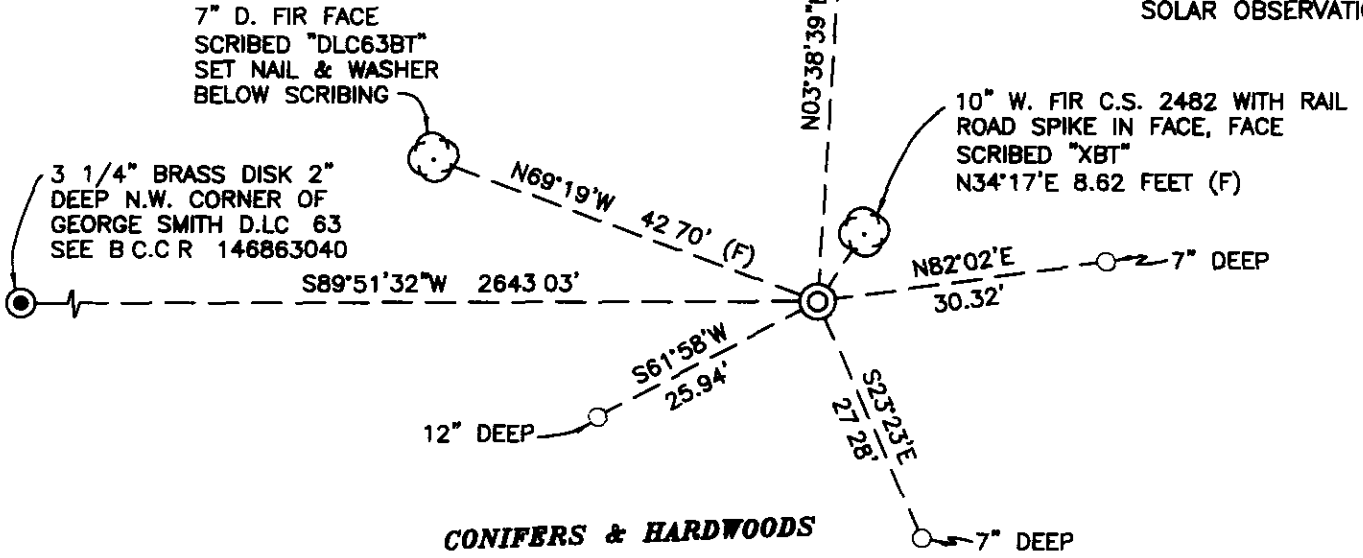
REMOVED THE 5/8" X 30" IRON ROD AND SET A 2" X 3 1/2" GALVANIZED IRON PIPE WITH A 3 1/4" BRASS DISK CONCRETED IN THE TOP, 2" BELOW GROUND LEVEL AND MARKED AS SHOWN ON PAGE 2 OF 2. SET A 6 FOOT ORANGE CARSONITE "SURVEY MARKER" POST 0.5 FEET SOUTH OF NEW MONUMENT. THE 5/8" X 30" IRON ROD WAS RESET AS THE NORTHEAST REFERENCE.

CONIFERS & HARDWOODS

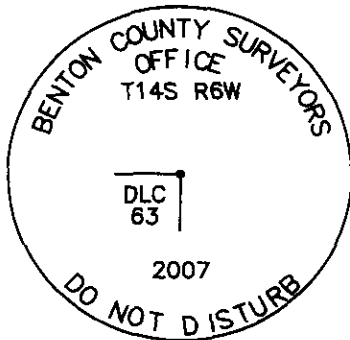
±48" ROTTEN D. FIR STUMP
GLO B.T. WITH VISIBLE
SCRIBING "4S6WBT"



1"=20'
BASIS OF BEARING
SOLAR OBSERVATION



MONUMENT DETAIL



3 1/4" BRASS DISK

LEGEND

- SET 5/8" X 30" REBAR WITH YELLOW PLASTIC CAP MKD "BENTON COUNTY SURVEYOR"
- (F) MEASUREMENT TO FACE
- ⊙ GOVERNMENT MONUMENT SET AS SHOWN
- ⊙ GOVERNMENT MONUMENT FOUND AS SHOWN
- ⊙ BEARING TREE AS NOTED
- C.S.B.T COUNTY SURVEYORS BEARING TREE
- GLO GENERAL LAND OFFICE
- ⊙ BEARING TREE STUMP AS NOTED
- B.C.C.R BENTON COUNTY CORNER RESTORATION

NEW ACCESSORIES

- 1 SET REBAR (SEE LEGEND) 12" BELOW GROUND LEVEL S61°58'W 25.94 FEET.
- 2 SET REBAR (SEE LEGEND) 7" BELOW GROUND LEVEL S23°23'E 27.28 FEET.
- 3 SET REBAR (SEE LEGEND) 7" BELOW GROUND LEVEL N82°02'E 30.32 FEET
- 4 FACE SCRIBED 7" D FIR, N69°19'W 42.70 FEET. SET ALUMINUM NAIL & PLASTIC WASHER IN BOTTOM OF BLAZE BELOW SCRIBING FOR DISTANCE & ANGLE MEASUREMENT.
5. FACE SCRIBED 10" D. FIR, N34°18'E 8.62 FEET USED RAIL ROAD SPIKE FOR DISTANCE & ANGLE MEASUREMENT.

NOTES

COMPASS DECLINATION IS 20° EAST ALL MEASURED DISTANCES AND BEARINGS ARE TO THE CENTER OF THE OBJECT, UNLESS OTHERWISE NOTED. ALL BEARING TREES ARE PAINTED AND HAVE A B.T TAG ATTACHED, FACING THE CORNER UNLESS OTHERWISE NOTED ALL NEW BEARING TREES HAVE A PLASTIC WASHER (STAMPED "BENTON COUNTY SURVEYOR CORNER RESTORATION") ATTACHED (BY ALUMINUM NAIL) TO THE FACE, BELOW THE "BT" FOR DISTANCE AND ANGLE MEASUREMENT UNLESS OTHERWISE NOTED THE DRAWING IS FROM AUTOCAD RELEASE 2006

THIS RESTORATION WAS PERFORMED AT THE DIRECTION AND APPROVAL OF THE BENTON COUNTY SURVEYOR. *David M. Dean*

FIRM/AGENCY BENTON COUNTY SURVEYOR'S OFFICE
 ADDRESS 360 S.W AVERY AVE CORVALLIS OR 97333; PH. 766-6821
 PRESENT DAVID M. DEAN, P.L.S. AND BERNIE ALTENBACH AND CODY WHEELER
 SURVEY TECH'S
 EQUIPMENT: LEICA TCR 1105/TDS WITH RECON DATA COLLECTOR

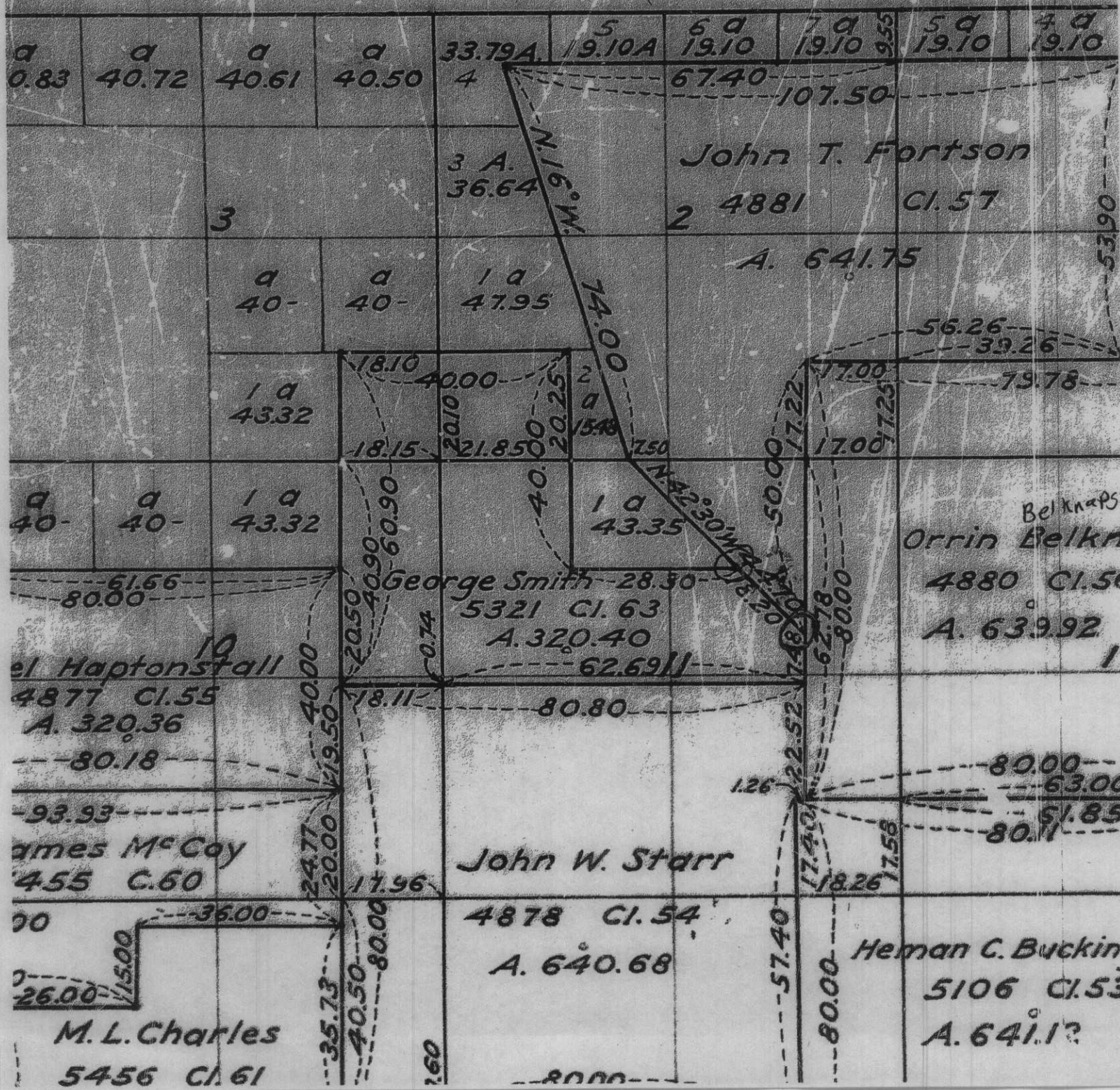
REGISTERED
PROFESSIONAL
LAND SURVEYOR

8/23/07 *David M. Dean*

OREGON
JULY 13, 1984
DAVID M. DEAN
2090

RENEWAL DATE: 12/31/07

6 West of the Willamette



INVERSE

61	7659.82	7602.23	-159.68 3.25 bd dlc
62	7647.62	7579.33	-150.28 ir 12 dn
Bearing:	<u>S 61°57'34" W</u> ✓	Horizontal	Distance: <u>25.94</u> ✓
61	7659.82	7602.23	-159.68 3.25 bd dlc
Bearing:	N 61°57'34" E	Horizontal	Distance: 25.94
7	7653.30	4959.21	329.41 stone nw63
Bearing:	<u>S 89°51'32" W</u> ✓	Horizontal	Distance: <u>2643.03</u> ✓
61	7659.82	7602.23	-159.68 3.25 bd dlc
Bearing:	N 89°51'32" E	Horizontal	Distance: 2643 03
66	7674.90	7562.28	-164.31 7w fir
Bearing:	<u>N 69°18'33" W</u> ✓	Horizontal	Distance: <u>42.70</u> ✓
61	7659.82	7602.23	-159.68 3.25 bd dlc
Bearing:	S 69°18'33" E	Horizontal	Distance: 42.70
106	7724.60	7606.35	-186.63 4ft df stmp
Bearing:	<u>N 03°38'39" E</u> ✓	Horizontal	Distance: <u>64.91</u> ✓
61	7659.82	7602.23	-159.68 3.25 bd dlc
Bearing:	S 03°38'39" W	Horizontal	Distance: 64.91
64	7666.94	7607.08	-167.42 10 w fir
Bearing:	<u>N 34°17'26" E</u> ✓	Horizontal	Distance: <u>8.62</u> ✓
61	7659.82	7602.23	-159.68 3.25 bd dlc
Bearing:	S 34°17'26" W	Horizontal	Distance: 8.62
63	7664.02	7632.26	-169.43 ir 7 dn
Bearing:	<u>N 82°02'08" E</u> ✓	Horizontal	Distance: <u>30.32</u> ✓
61	7659.82	7602.23	-159.68 3.25 bd dlc
Bearing:	S 82°02'08" W	Horizontal	Distance: 30 32
60	7634.78	7613.05	-147.63 ir/ypc
Bearing:	<u>S 23°22'52" E</u> ✓	Horizontal	Distance: <u>27 28</u> ✓

List Points Report

8/8/2007 10:27

File> S:\Survey Corners\CORNERS\T-14\46863050.crd

Job Description>

Job Number> 0.000 Job Date> 2007.0807

PointNo.	Northing(Y)	Easting(X)	Elev(Z)	Description
1	5000.000	5000.000	100.000	spike
2	5309.115	5063.130	129.684	spike
3	6045.084	5198.344	198.838	spike
4	6471.451	5229.992	246.647	spike
5	6673.318	5530.018	330.630	spike
6	7908.199	4911.014	364.928	spike
7	7653.303	4959.211	329.406	stone nw63
50	7652.400	4972.014	95.057	Cogo
51	4981.995	4960.362	95.057	ir/ypc
60	7634.776	7613.054	-147.626	ir/ypc
61	7659.816	7602.228	-159.684	3.25 bd dlc
62	7647.620	7579.329	-150.277	ir 12 dn
63	7664.018	7632.259	-169.428	ir 7 dn
64	7666.937	7607.083	-167.424	10 w fir
65	7666.938	7607.084	-167.425	10 w fir
66	7674.905	7562.278	-164.310	7w fir
101	9251.000	6527.396	303.387	spike
102	7995.731	6274 790	148.554	spike
103	8155.113	7168 216	-45.671	spike
104	7859.094	7527.098	-136.340	spike
105	7659.797	7602.205	-157.080	5/8 ir
106	7724.599	7606.354	-186.628	4ft df stmp
107	7658.759	7601.750	-186.628	Cogo
150	7648.560	7612.211	95.057	Cogo
200	7653.092	4961.359	95.057	grant bndy calc
201	7659.788	7602.210	0.000	grant bndy calc

Number of points listed> 26

```

JB,NMHULL,DT08-02-2007,TM09 26.14
MO,AD0,UN2,SF1 0,EC1,E00.0,AU0
SP,PN1,N 5000 0,E 5000.0,EL100.0,--spike
--Activating Total Station: Leica TPS Series [1105], COM1, 9600 baud, no parity
--Foresight Target My Prism, HR 5.0 (5 0 + 0 0 Offset), Prism Const. 0 0mm
--Data Collector Serial Number: FS74A57479
--Activating Total Station: Leica TPS Series [1105], COM1, 9600 baud, no parity
--Foresight Target My Prism, HR 5 0 (5 0 + 0.0 Offset), Prism Const .0 0mm
OC,OP1,N 5000.0,E 5000 0,EL100 0,--spike
--HR 5.0 (5 0 + 0 0 Offset)
LS,HI5 0,HR5.0
BK,OP1,BP0,BS12 0000,BC0 0000
OC,OP1,N 5000 0,E 5000.0,EL100 0,--spike
BK,OP1,BP0,BS12 0000,BC0.0000
--Fixed HR at Backsight 5 0 (5 0 + 0 0 Offset), Prism Const 0 0.0mm
OC,OP1,N 5000 0,E 5000.0,EL100 0,--spike
BK,OP1,BP0,BS12 0000,BC0.0000
--Fixed HR at Backsight 5.0 (5 0 + 0 0 Offset), Prism Const 0 0.0mm
OC,OP1,N 5000 0,E 5000.0,EL100.0,--spike
BK,OP1,BP0,BS12 0000,BC0.0000
--Fixed HR at Backsight 5.0 (5 0 + 0 0 Offset), Prism Const 0 0mm
RD,BD 1 295.1140
RD,FD 1:295 1139
RD,ZD 1 84 3727
MD,SD 1 316.89
RF,OP1,FP2,AR295 1139,ZE84 3727,SD316.89,HR5.0,--spike
RD,FV 1 115 1141
RD,ZV 1 275 2224
MD,SD 1.316 889
RF,OP1,FP2,AR115 1141,ZE275 2224,SD316.889,HR5 0,--spike
RD,BV 1 115 1141
--Horizontal Angle Error 0 0001
--Zenith Angle Error 0 0009
--Slope Distance Error 0 001
--Horizontal Angle Error compares to the average: 0 0000
--Zenith Angle Error compares to the average: 0 0000
--Slope Distance Error compares to the average 0 0
SS,OP1,FP2,AR0 0000,ZE84 3732,SD316.8895,--spike
OC,OP1,N 5000 0,E 5000 0,EL100.0,--spike
BK,OP1,BP0,BS12 0000,BC0 0000
--Fixed HR at Backsight 5 0 (5 0 + 0 0 Offset), Prism Const 0 0mm
OC,OP1,N 5000 0,E 5000.0,EL100 0,--spike
BK,OP1,BP2,BS12 0000,BC0.0000
--Fixed HR at Backsight 5.0 (5.0 + 0 0 Offset), Prism Const 0 0.0mm
--BS check 1 - 2 ZE275 2225,SD316 888,HD err= -0 00099, VD err= -0 005494
--BS Circle check angular err= 115 1140
RD,BD 1 0 0000
RD,FD 1:234 0146
RD,ZD 1 96 2840
MD,SD 1 43 816
RF,OP1,FP51,AR234 0146,ZE96 2840,SD43.816,HR5 0,--1r/ypc
RD,FV 1.54 0138
RD,ZV 1 263 3125
MD,SD 1 43 815
RF,OP1,FP51,AR54 0138,ZE263 3125,SD43.815,HR5.0,--1r/ypc
RD,BV 1.179 5958
--Horizontal Angle Error 0.0006

```

```
--Zenith Angle Error 0.0005
--Slope Distance Error 0 001
--Horizontal Angle Error compares to the average: 0.0000
--Zenith Angle Error compares to the average: 0 0000
--Slope Distance Error compares to the average: 0 0
SS,OP1,FP51,AR234 0143,ZE96.2838,SD43 8155,--ir/ypc
OC,OP2,N 5308.601731,E 5065 594541,EL129.684026,--spike
BK,OP2,BP1,BS192.0000,BC0.0000
--Fixed HR at Backsight.5 0 (5 0 + 0.0 Offset), Prism Const.:0 0mm
--BS check 2 - 1:ZE95 2220,SD316 888,HD err= 0 000562, VD err= 0 017227
--BS Circle check angular err= 125.2503
--RD,BD 1 359.5955
--RD,FD 1.179 0507
--RD,ZD 1.84.4307
--MD,SD 1 751 474
--RF,OP2,FP3,AR179 0507,ZE84 4307,SD751 474,HR5 0,--spike
--RD,FV 1 358 4355
--RD,ZV 1:275 1634
--MD,SD 1 751 476
--RF,OP2,FP3,AR358.4355,ZE275 1634,SD751 476,HR5 0,--spike
--RD,BV 1:179.5709
--Horizontal Angle Error 0 1826
--Zenith Angle Error 0 0019
--Slope Distance Error 0 002
--Horizontal Angle Error compares to the average 0.0355
--Zenith Angle Error compares to the average: 0 0002
--Slope Distance Error compares to the average: -0.001
RD,BD 1:359 5639
RD,FD 1 178 5356
RD,ZD 1 84 4310
MD,SD 1:751 475
RF,OP2,FP3,AR178 5356,ZE84.4310,SD751 475,HR5.0,--spike
RD,FV 1 358 4339
RD,ZV 1:275 1640
MD,SD 1 751.477
RF,OP2,FP3,AR358.4339,ZE275 1640,SD751 477,HR5.0,--spike
RD,BV 1:179 5648
--Horizontal Angle Error 0.1026
--Zenith Angle Error 0.0010
--Slope Distance Error 0.002
--Horizontal Angle Error compares to the average 0 0000
--Zenith Angle Error compares to the average 0 0000
--Slope Distance Error compares to the average 0 0
TR,OP2,FP3,AR178 5204,ZE84 4315,SD751 476,--spike
OC,OP3,N 6043 467593,E 5206 676998,EL198 837716,--spike
BK,OP3,BP2,BS190 5204,BC0.0000
--Fixed HR at Backsight 5 0 (5 0 + 0 0 Offset), Prism Const 0 0mm
SU,LA44 4233,LO123 3116,EG0
--Avg line Az= 0 0000
--Set local time from 10 09 08 to 10.09.00 Difference -00 00 08
SU,LA44 4233,LO123 3116,EG0
--Avg line Az= 0.0000
SU,LA44 2220,LO123 2345,EG0
--Avg line Az= 0 0000
--Data Collector Serial Number FS74A57479
--Activating Total Station Leica TPS Series [1105], COM1, 9600 baud, no parity
--Foresight Target My Prism, HR.5 0 (5 0 + 0 0 Offset), Prism Const 0 0mm
```

```

--Adjustment begin Rotation
--Base Point: 1
--Angle 358.2438
--Angle computed from (Old Az. 12.0000) to (New Az 10.2438)
AP,PN1,N 5000 0,E 5000 0,EL100.0,--spike
AP,PN2,N 5310.302422,E 5057.009468,EL129 684026,--spike
AP,PN51,N 4981.215533,E 4960 725161,EL95 057396,--ir/ypc
AP,PN3,N 6048 79881,E 5177 654315,EL198 837716,--spike
--Adjustment end
--Adjustment begin Rotation
--Base Point: 1
--Angle 1.0756
--Angle computed from (Old Az 9.1642) to (New Az 10 2438)
AP,PN1,N 5000 0,E 5000.0,EL100 0,--spike
AP,PN2,N 5309.115347,E 5063 129827,EL129.684026,--spike
AP,PN51,N 4981 995261,E 4960 361654,EL95 057396,--ir/ypc
AP,PN3,N 6045 08364,E 5198 3436,EL198.837716,--spike
--Adjustment end
OC,OP3,N 6045 08364,E 5198.3436,EL198.837716,--spike
--HR 5.0 (5 0 + 0 0 Offset)
LS,HI5 0,HR5 0
BK,OP3,BP2,BS190.2438,BC0 0000
--Fixed HR at Backsight:0 0 (0 0 + 0 0 Offset), Prism Const 0 0mm
--BS check 3 - 2 ZE95 1650,SD751 474,HD err= -0 001369, VD err= 4 993535
--BS Circle check angular err= 73 0856
RD,BD 1:0 0005
RD,FD 1 173 5018
RD,ZD 1 83 3711
MD,SD 1:430 206
RF,OP3,FP4,AR173 5018,ZE83 3711,SD430 206,HR5.0,--spike
RD,FV 1 353.5009
RD,ZV 1:276 2251
MD,SD 1:430 205
RF,OP3,FP4,AR353.5009,ZE276 2251,SD430 205,HR5.0,--spike
RD,BV 1 180 0012
--Horizontal Angle Error: 0 0016
--Zenith Angle Error: 0 0002
--Slope Distance Error: 0 001
--Horizontal Angle Error compares to the average 0 0000
--Zenith Angle Error compares to the average: 0 0000
--Slope Distance Error compares to the average 0 0
TR,OP3,FP4,AR173 5005,ZE83 3710,SD430.2055,--spike
OC,OP4,N 6471.451344,E 5229 99182,EL246.647172,--spike
BK,OP4,BP3,BS184.1443,BC0 0000
--Fixed HR at Backsight:0 0 (0 0 + 0.0 Offset), Prism Const 0 0mm
OC,OP4,N 6471 451344,E 5229 99182,EL246.647172,--spike
BK,OP4,BP3,BS184 1443,BC0.0000
--Fixed HR at Backsight 0 0 (0 0 + 0.0 Offset), Prism Const 0 0mm
--BS check 4 - 3 ZE96 2257,SD430 209,HD err= 0 001856, VD err= 4 985102
--BS Circle check angular err= 51 5353
RD,BD 1 359 5956
RD,FD 1 231.4911
RD,ZD 1 76 5534
MD,SD 1:371 24
RF,OP4,FP5,AR231 4911,ZE76.5534,SD371 24,HR5 0,--spike
RD,FV 1 51 4909
RD,ZV 1 283 0432

```

MD,SD 1.371 239
RF,OP4,FP5,AR51 4909,ZE283 0432,SD371.239,HR5.0,--spike
RD,BV 1.179 5953
--Horizontal Angle Error: 0 0001
--Zenith Angle Error: 0 0006
--Slope Distance Error 0 001
--Horizontal Angle Error compares to the average. 0.0000
--Zenith Angle Error compares to the average: 0 0000
--Slope Distance Error compares to the average: 0 0
TR,OP4,FP5,AR231.4916,ZE76 5531,SD371 2395,--spike
OC,OP5,N 6673.318078,E 5530 017729,EL330 62956,--spike
BK,OP5,BP4,BS236.0358,BC0 0000
--Fixed HR at Backsight 0 0 (0 0 + 0 0 Offset), Prism Const 0.0mm
OC,OP5,N 6673 318078,E 5530.017729,EL330 62956,--spike
BK,OP5,BP4,BS236 0358,BC0 0000
--Fixed HR at Backsight 0.0 (0.0 + 0 0 Offset), Prism Const..0 0mm
--BS check 5 - 4:ZE103.0426,SD371 239,HD err= 0 000734, VD err= 5 005373
--BS Circle check : angular err= 50 2050
RD,BD 1:0 0000
RD,FD 1 97.1847
RD,ZD 1:88 3441
MD,SD 1.1381 765
RF,OP5,FP6,AR97 1847,ZE88 3441,SD1381 765,HR5.0,--spike
RD,FV 1:277 1844
RD,ZV 1 271 2522
MD,SD 1 1381.765
RF,OP5,FP6,AR277 1844,ZE271 2522,SD1381 765,HR5.0,--spike
RD,BV 1 180 0013
--Horizontal Angle Error. 0 0016
--Zenith Angle Error: 0 0003
--Slope Distance Error: 0 0
--Horizontal Angle Error compares to the average 0 0000
--Zenith Angle Error compares to the average 0 0000
--Slope Distance Error compares to the average 0.0
TR,OP5,FP6,AR97 1839,ZE88.3440,SD1381.765,--spike
OC,OP6,N 7908 199435,E 4911 013567,EL364 928194,--spike
BK,OP6,BP5,BS153 2237,BC0 0000
--Fixed HR at Backsight 0 0 (0 0 + 0 0 Offset), Prism Const 0 0mm
SP,PN50,N 7652.39984,E 4972 013566,EL95 057396,--Cogo
OC,OP6,N 7908 199435,E 4911 013567,EL364.928194,--spike
BK,OP6,BP5,BS153 2237,BC0 0000
--Fixed HR at Backsight 0 0 (0.0 + 0 0 Offset), Prism Const .0 0mm
--BS check 6 - 5:ZE91 2535,SD1381 769,HD err= 0 001584, VD err= 4 902795
--BS Circle check angular err= 108 1533
OC,OP6,N 7908 199435,E 4911 013567,EL364 928194,--spike
BK,OP6,BP5,BS153 2237,BC0 0000
--Fixed HR at Backsight 5 0 (5 0 + 0 0 Offset), Prism Const. 0 0mm
BK,OP6,BP5,BS153 2237,BC346 4722
--Fixed HR at Backsight:5 0 (5 0 - 0 0 Offset), Prism Const 0.0mm
OC,OP6,N 7908 199435,E 4911 013567,EL364 928194,--spike
BK,OP6,BP5,BS153 2237,BC0.0000
--Fixed HR at Backsight 5 0 (5 0 + 0 0 Offset), Prism Const 0.0mm
--BS check 6 - 5 ZE91 2541,SD1381.763,HD err= -0 005415, VD err= -0 137237
--BS Circle check angular err= 13 1235
RD,BD 1.359 5958
RD,FD 1 256 5417
RD,ZD 1 91 4043

MD,SD 1.2102 283
RF,OP6,FP101,AR256.5417,ZE91 4043,SD2102 283,HR5 0,--spike
RD,FV 1:76.5419
RD,ZV 1 268 1925
MD,SD 1:2102 283
RF,OP6,FP101,AR76 5419,ZE268 1925,SD2102 283,HR5 0,--spike
RD,BV 1:180.0001
--Horizontal Angle Error 0 0001
--Zenith Angle Error 0.0008
--Slope Distance Error. 0.0
--Horizontal Angle Error compares to the average 0 0000
--Zenith Angle Error compares to the average. 0 0000
--Slope Distance Error compares to the average: 0 0
TR,OP6,FP101,AR256 5419,ZE91 4039,SD2102.283,--spike
OC,OP101,N 9251 000165,E 6527 396145,EL303 386559,--spike
BK,OP101,BP6,BS230 1656,BC0 0000
--Fixed HR at Backsight.5 0 (5.0 + 0 0 Offset), Prism Const 0.0mm
SP,PN150,N 7648.559826,E 7612.210773,EL95.057396,--Cogo
OC,OP101,N 9251 000165,E 6527 396145,EL303 386559,--spike
BK,OP101,BP6,BS230 1656,BC0.0000
--Fixed HR at Backsight 5.0 (5.0 + 0 0 Offset), Prism Const :0 0mm
--BS check 101 - 6:ZE88 1923,SD2102 29,HD err= 0 007594, VD err= -0 020171
--BS Circle check angular err= 32.1718
RD,BD 1 359 5959
RD,FD 1:321.0549
RD,ZD 1 96 5339
MD,SD 1 1289 763
RF,OP101,FP102,AR321.0549,ZE96 5339,SD1289.763,HR5 0,--spike
RD,FV 1 141 0540
RD,ZV 1:263.0616
MD,SD 1 1289.76
RF,OP101,FP102,AR141 0540,ZE263.0616,SD1289 76,HR5 0,--spike
RD,BV 1:179.5959
--Horizontal Angle Error 0 0009
--Zenith Angle Error 0.0005
--Slope Distance Error 0.003
--Horizontal Angle Error compares to the average 0 0000
--Zenith Angle Error compares to the average 0.0000
--Slope Distance Error compares to the average 0.0
TR,OP101,FP102,AR321 0546,ZE96 5342,SD1289 7615,--spike
OC,OP102,N 7995 730693,E 6274.789701,EL148.553532,--spike
BK,OP102,BP101,BS11 2241,BC0 0000
--Fixed HR at Backsight:5 0 (5 0 + 0 0 Offset), Prism Const. 0 0mm
OC,OP102,N 7995 730693,E 6274.789701,EL148.553532,--spike
BK,OP102,BP101,BS11 2241,BC0 0000
--Fixed HR at Backsight:5 0 (5 0 + 0 0 Offset), Prism Const. 0 0mm
--BS check 102 - 101 ZE83.0630,SD1289 76,HD err= 0.007141, VD err= -0 071569
--BS Circle check . angular err= 98 1519
--RD,BD 1 359 5957
--RD,FD 1 0 0000
--RD,ZD 1
--MD,SD 1
--RF,OP102,FP,AR0 0000,ZE,SD,HR5 0,--
--RD,FV 1 180 0000
--RD,ZV 1
--MD,SD 1
--RF,OP102,FP,AR180.0000,ZE,SD,HR5.0,--

--RD,BV 1.180.0000
--Horizontal Angle Error: 0.0000
--Zenith Angle Error: 0.0000
OC,OP102,N 7995 730693,E 6274 789701,EL148.553532,--spike
BK,OP102,BP101,BS11.2241,BC0.0000
--Fixed HR at Backsight:5.0 (5.0 + 0 0 Offset), Prism Const..0 0mm
--BS check 102 - 101:ZE83 0628,SD1289 772,HD err= 0 017554, VD err= -0.057713
--BS Circle check . angular err= 0 0004
RD,BD 1 0 0002
RD,FD 1.68.3029
RD,ZD 1 102.0444
MD,SD 1:928 082
RF,OP102,FP103,AR68.3029,ZE102 0444,SD928 082,HR5 0,--spike
RD,FV 1.248 3027
RD,ZV 1.257.5509
MD,SD 1 928 082
RF,OP102,FP103,AR248 3027,ZE257.5509,SD928.082,HR5.0,--spike
RD,BV 1 180 0003
--Horizontal Angle Error: 0 0003
--Zenith Angle Error. 0 0007
--Slope Distance Error: 0 0
--Horizontal Angle Error compares to the average 0.0000
--Zenith Angle Error compares to the average: 0 0000
--Slope Distance Error compares to the average: 0 0
TR,OP102,FP103,AR68.3026,ZE102 0448,SD928 082,--spike
OC,OP103,N 8155 113232,E 7168.215887,EL-45 670707,--spike
BK,OP103,BP102,BS259 5307,BC0 0000
--Fixed HR at Backsight:5 0 (5 0 + 0 0 Offset), Prism Const 0.0mm
OC,OP103,N 8155 113232,E 7168 215887,EL-45.670707,--spike
BK,OP103,BP102,BS259.5307,BC0 0000
--Fixed HR at Backsight:5 0 (5 0 + 0.0 Offset), Prism Const. 0 0mm
--BS check 103 - 102 ZE77 5522,SD928 069,HD err= -0.003768, VD err= -0 044519
--BS Circle check angular err= 0.2412
RD,BD 1.359 5955
RD,FD 1 229.3800
RD,ZD 1:101 0143
MD,SD 1 473 966
RF,OP103,FP104,AR229.3800,ZE101 0143,SD473 966,HR5 0,--spike
RD,FV 1:49 3756
RD,ZV 1 258.5817
MD,SD 1 473 969
RF,OP103,FP104,AR49 3756,ZE258.5817,SD473 969,HR5 0,--spike
RD,BV 1 180.0011
--Horizontal Angle Error 0.0020
--Zenith Angle Error 0 0000
--Slope Distance Error. 0 003
--Horizontal Angle Error compares to the average 0 0000
--Zenith Angle Error compares to the average 0.0000
--Slope Distance Error compares to the average 0 0
TR,OP103,FP104,AR229 3755,ZE101 0143,SD473 9675,--spike
OC,OP104,N 7859 093618,E 7527 098327,EL-136.340289,--spike
BK,OP104,BP103,BS309 3102,BC0 0000
--Fixed HR at Backsight:5 0 (5 0 + 0 0 Offset), Prism Const 0 0mm
OC,OP104,N 7859 093618,E 7527 098327,EL-136.340289,--spike
BK,OP104,BP103,BS309 3102,BC0.0000
--Fixed HR at Backsight:5.0 (5.0 + 0 0 Offset), Prism Const .0 0mm
--BS check 104 - 103 ZE78 5823,SD473 966,HD err= 0 001165, VD err= -0 013819

--BS Circle check . angular err= 149 4746
RD,BD 1 0 0002
RD,FD 1.209 5005
RD,ZD 1.95 3347
MD,SD 1 213.987
RF,OP104,FP105,AR209 5005,ZE95 3347,SD213.987,HR5.0,--5/8 1r
RD,FV 1 29 4949
RD,ZV 1.264.2621
MD,SD 1.213 987
RF,OP104,FP105,AR29 4949,ZE264.2621,SD213 987,HR5 0,--5/8 1r
RD,BV 1 179 5950
--Horizontal Angle Error 0.0004
--Zenith Angle Error 0.0008
--Slope Distance Error: 0 0
--Horizontal Angle Error compares to the average 0 0000
--Zenith Angle Error compares to the average. 0 0000
--Slope Distance Error compares to the average: 0 0
TR,OP104,FP105,AR209 5001,ZE95 3343,SD213 987,--5/8 1r
OC,OP105,N 7659 79664,E 7602 204934,EL-157.080306,--5/8 1r
BK,OP105,BP104,BS339 2103,BC0.0000
--Fixed HR at Backsight 5 0 (5 0 + 0.0 Offset), Prism Const 0 0mm

```

--JB,NM46863040,DT08-03-2007,TM13 29 22
--MO,ADO,UN2,SF1.0,EC1,E00 0,AU0
SP,PN1,N 5000 0000,E 5000 0000,EL100 0000,--spike
--Data Collector Serial Number: FS74A57479
--Activating Total Station Manual Mode
SP,PN2,N 5309 1153,E 5063 1298,EL129.6840,--spike
SP,PN3,N 6045.0836,E 5198 3436,EL198.8377,--spike
SP,PN4,N 6471.4513,E 5229 9918,EL246.6472,--spike
SP,PN5,N 6673.3181,E 5530 0177,EL330.6296,--spike
SP,PN6,N 7908.1994,E 4911 0136,EL364 9282,--spike
SP,PN50,N 7652.3998,E 4972.0136,EL95 0574,--Cogo
SP,PN51,N 4981 9953,E 4960.3617,EL95 0574,--ir/ypc
SP,PN101,N 9251 0002,E 6527 3961,EL303 3866,--spike
SP,PN102,N 7995 7307,E 6274 7897,EL148 5535,--spike
SP,PN103,N 8155 1132,E 7168 2159,EL-45 6707,--spike
SP,PN104,N 7859 0936,E 7527 0983,EL-136.3403,--spike
SP,PN105,N 7659 7966,E 7602 2049,EL-157 0803,--5/8 ir
SP,PN150,N 7648.5598,E 7612 2108,EL95.0574,--Cogo
SP,PN200,N 7653.0921,E 4961 3588,EL95 0574,--grant bndy calc
SP,PN201,N 7659.7882,E 7602.2103,EL0 0000,--grant bndy calc
--Coordinates imported from 46863040 cr5 as US Survey Feet
--Activating Total Station: Leica TPS Series [1105], COM1, 9600 baud, no parity
--Foresight Target My Prism, HR 5.0 (5 0 + 0 0 Offset), Prism Const 0 0mm
--Date: 08-03-2007 Time 13 54 52
--Date 08-03-2007 Time: 13 54:54
--Data Collector Serial Number: FS74A57479
--Activating Total Station Leica TPS Series [1105], COM1, 9600 baud, no parity
--Foresight Target My Prism, HR 5 0 (5 0 + 0 0 Offset), Prism Const. 0 0mm
OC,OP105,N 7659 79664,E 7602.204934,EL-157 080306,--5/8 ir
--HR 5 0 (5 0 + 0 0 Offset)
LS,HI5 000,HR5 000
BK,OP105,BP104,BS,BC0 0000
--Fixed HR at Backsight.0 0 (0.0 - 0 0 Offset), Prism Const 0 0mm
--BS check 105 - 104 ZE84 1701,SD214.053,HD err= 0 00879, VD err= 5 581529
--BS Circle check angular err= 82.5644
--RD,BD 1 24.1830
--RD,FD 1 0.0000
--RD,ZD 1.
--MD,SD 1.
--RF,OP105,FP,AR0 0000,ZE,SD,HR5 0,--
--RD,FV 1 180.0000
--RD,ZV 1
--MD,SD 1
--RF,OP105,FP,AR180 0000,ZE,SD,HR5 0,--
--RD,BV 1 180 0000
--Horizontal Angle Error 0 0000
--Zenith Angle Error 0 0000
--RD,BD 1 0.0005
--RD,FD 1 24 1837
--RD,ZD 1 114 2748
--MD,SD 1 71.34
--RF,OP105,FP106,AR24 1837,ZE114 2748,SD71 34,HR5 0,--4ft df stmp
--RD,FV 1:204 1859
--RD,ZV 1 245 3144
--MD,SD 1 71 342
--RF,OP105,FP106,AR204 1859,ZE245 3144,SD71 342,HR5 0,--4ft df stmp
--RD,BV 1 180 0000

```

```

--Horizontal Angle Error  0 0027
--Zenith Angle Error: 0 0028
--Slope Distance Error  0 002
--Horizontal Angle Error compares to the average  0.0000
--Zenith Angle Error compares to the average  0.0000
--Slope Distance Error compares to the average: 0.0
SS,OP105,FP106,AR24 1846,ZE114.2802,SD71.341,--4ft df stmp
SP,PN107,N 7658.7593,E 7601 7499,EL-186.6277,--Cogo
--RD,BD 1:0 0000
--RD,FD 1:0 0000
--RD,ZD 1
--MD,SD 1
--RF,OP105,FP,AR0 0000,ZE,SD,HR5 0,--
--RD,FV 1:180 0000
--RD,ZV 1
--MD,SD 1
--RF,OP105,FP,AR180 0000,ZE,SD,HR5 0,--
--RD,BV 1:180 0000
--Horizontal Angle Error  0.0000
--Zenith Angle Error  0 0000
--RD,BD 1 0.0004
--RD,FD 1 177 1229
--RD,ZD 1:70 5247
--MD,SD 1 28 862
--RF,OP105,FP60,AR177.1229,ZE70.5247,SD28 862,HR5 0,--1r/ypc
--RD,FV 1 357 1222
--RD,ZV 1:289.0707
--MD,SD 1 28.865
--RF,OP105,FP60,AR357.1222,ZE289 0707,SD28 865,HR5 0,--1r/ypc
--RD,BV 1:179 5955
--Horizontal Angle Error  0.0002
--Zenith Angle Error  0 0006
--Slope Distance Error  0.003
--Horizontal Angle Error compares to the average. 0.0000
--Zenith Angle Error compares to the average  0 0000
--Slope Distance Error compares to the average  0 0
SS,OP105,FP60,AR177 1226,ZE70.5250,SD28 863,--1r/ypc
OC,OP60,N 7634.776226,E 7613 054059,EL-147 626381,--1r/ypc
BK,OP60,BP104,BS,BC0 0000
--Fixed HR at Backsight 0.0 (0 0 + 0 0 Offset), Prism Const  0.0mm
--BS check 60 - 104.ZE87 3256,SD240 445,HD err= 0 002754, VD err= 3 998182
--BS Circle check . angular err= 32 2723
--RD,BD 1 0 0000
--RD,FD 1:357 3509
--RD,ZD 1 113 5031
--MD,SD 1 29 826
--RF,OP60,FP61,AR357 3509,ZE113 5031,SD29 826,HR5 0,--3 25 bd dlc
--RD,FV 1 177 3503
--RD,ZV 1 246 0913
--MD,SD 1 29 826
--RF,OP60,FP61,AR177 3503,ZE246.0913,SD29 826,HR5 0,--3 25 bd dlc
--RD,BV 1 179 5959
--Horizontal Angle Error  0.0005
--Zenith Angle Error  0 0016
--Slope Distance Error  0 0
--Horizontal Angle Error compares to the average  0 0000
--Zenith Angle Error compares to the average  0.0000

```

--Slope Distance Error compares to the average 0 0
SS,OP60,FP61,AR357 3507,ZE113 5039,SD29.826,--3.25 bd dlc
OC,OP61,N 7659.816436,E 7602 228002,EL-159.683541,--3 25 bd dlc
BK,OP61,BP104,BS,BC0.0000
--Fixed HR at Backsight:0 0 (0 0 + 0 0 Offset), Prism Const 0 0mm
OC,OP61,N 7659.816436,E 7602 228002,EL-159 683541,--3 25 bd dlc
BK,OP61,BP104,BS,BC0 0000
--Fixed HR at Backsight:0 0 (0 0 + 0 0 Offset), Prism Const. 0 0mm
--BS check 61 - 104 ZE84 0727,SD214 09,HD err= -0 004178, VD err= 3 574709
--BS Circle check · angular err= 54 1443
--RD,BD 1 0.0007
--RD,FD 1:262 3707
--RD,ZD 1:70 0410
--MD,SD 1:27 599
--RF,OP61,FP62,AR262 3707,ZE70 0410,SD27 599,HR5 0,--ir 12 dn
--RD,FV 1 82.3706
--RD,ZV 1 289 5543
--MD,SD 1.27 595
--RF,OP61,FP62,AR82.3706,ZE289.5543,SD27.595,HR5 0,--ir 12 dn
--RD,BV 1:180.0008
--Horizontal Angle Error· 0.0002
--Zenith Angle Error 0.0007
--Slope Distance Error: 0 004
--Horizontal Angle Error compares to the average 0 0000
--Zenith Angle Error compares to the average 0 0000
--Slope Distance Error compares to the average 0.0
SS,OP61,FP62,AR262.3659,ZE70.0414,SD27 597,--ir 12 dn
--RD,BD 1 0 0006
--RD,FD 1 102 4154
--RD,ZD 1:107 4848
--MD,SD 1:31 851
--RF,OP61,FP63,AR102 4154,ZE107 4848,SD31 851,HR5 0,--ir 7 dn
--RD,FV 1 282 4139
--RD,ZV 1:252 1105
--MD,SD 1:31 851
--RF,OP61,FP63,AR282 4139,ZE252 1105,SD31 851,HR5 0,--ir 7 dn
--RD,BV 1 180 0021
--Horizontal Angle Error 0.0030
--Zenith Angle Error· 0 0007
--Slope Distance Error 0 0
--Horizontal Angle Error compares to the average. 0 0000
--Zenith Angle Error compares to the average 0.0000
--Slope Distance Error compares to the average. 0 0
SS,OP61,FP63,AR102 4133,ZE107.4852,SD31 851,--ir 7 dn
--RD,BD 1 0 0000
--RD,FD 1 0.0000
--RD,ZD 1.
--MD,SD 1
--RF,OP61,FP,AR0 0000,ZE,SD,HR5 0,--
--RD,FV 1 180 0000
--RD,ZV 1.
--MD,SD 1
--RF,OP61,FP,AR180 0000,ZE,SD,HR5.0,--
--RD,BV 1 180 0000
--Horizontal Angle Error 0 0000
--Zenith Angle Error 0.0000
SS,OP61,FP64,AR54.5651,ZE131.5543,SD11 584,--10 w fir

```

SS,OP61,FP65,AR54 5652,ZE131.5542,SD11.586,--10 w fir
--RD,BD 1:0 0000
--RD,FD 1.311.2053
--RD,ZD 1 96.1054
--MD,SD 1 42.954
--RF,OP61,FP66,AR311.2053,ZE96 1054,SD42 954,HR5 0,--7w fir
--RD,FV 1 131 2043
--RD,ZV 1:263.4856
--MD,SD 1:42.954
--RF,OP61,FP66,AR131 2043,ZE263.4856,SD42 954,HR5.0,--7w fir
--RD,BV 1 179 5951
--Horizontal Angle Error: 0 0001
--Zenith Angle Error: 0.0010
--Slope Distance Error 0 0
--Horizontal Angle Error compares to the average 0 0000
--Zenith Angle Error compares to the average: 0.0000
--Slope Distance Error compares to the average 0 0
SS,OP61,FP66,AR311 2053,ZE96.1059,SD42.954,--7w fir
OC,OP6,N 7908 199435,E 4911.013567,EL364 928194,--spike
BK,OP6,BP101,BS,BC0.0000
--Fixed HR at Backsight 5.0 (5.0 + 0.0 Offset), Prism Const .0 0mm
OC,OP6,N 7908 199435,E 4911 013567,EL364 928194,--spike
BK,OP6,BP101,BS,BC0 0000
--Fixed HR at Backsight:5 0 (5 0 + 0 0 Offset), Prism Const 0.0mm
--BS check 6 - 101:ZE91 4158,SD2102 321,HD err= 0.020081, VD err= -0 71534
--BS Circle check : angular err= 41.4345
BK,OP6,BP101,BS,BC241 2647
--Fixed HR at Backsight.5 0 (5 0 + 0 0 Offset), Prism Const 0 0mm
OC,OP6,N 7908 199435,E 4911.013567,EL364 928194,--spike
BK,OP6,BP101,BS,BC0 0000
--Fixed HR at Backsight 5.0 (5 0 + 0 0 Offset), Prism Const.:0 0mm
--BS check 6 - 101 ZE91 4203,SD2102 325,HD err= 0 022572, VD err= -0 766398
--BS Circle check : angular err= 118 3322
BK,OP6,BP101,BS,BC4 3755
--Fixed HR at Backsight 5 0 (5 0 + 0 0 Offset), Prism Const :0 0mm
OC,OP6,N 7908 199435,E 4911 013567,EL364 928194,--spike
BK,OP6,BP101,BS,BC0 0000
--Fixed HR at Backsight 5.0 (5.0 + 0.0 Offset), Prism Const .0 0mm
--BS check 6 - 101 ZE91 4206,SD2102.321,HD err= 0 017669, VD err= -0 796843
--BS Circle check angular err= 118 3302
--RD,BD 1:359 5959
--RD,FD 1 119 0039
--RD,ZD 1 97 4749
--MD,SD 1:261.834
--RF,OP6,FP7,AR119 0039,ZE97 4749,SD261.834,HR5 0,--stone nw63
--RD,FV 1 299 0026
--RD,ZV 1:262 1207
--MD,SD 1 261 834
--RF,OP6,FP7,AR299 0026,ZE262.1207,SD261 834,HR5.0,--stone nw63
--RD,BV 1 179 5950
--Horizontal Angle Error 0.0004
--Zenith Angle Error 0 0004
--Slope Distance Error 0 0
--Horizontal Angle Error compares to the average 0 0000
--Zenith Angle Error compares to the average 0 0000
--Slope Distance Error compares to the average 0.0
TR,OP6,FP7,AR119 0038,ZE97 4751,SD261 834,--stone nw63

```

OC,OP7,N 7653.302669,E 4959.210729,EL329 405942,--stone nw63
BK,OP7,BP6,BS,BC0.0000
--Fixed HR at Backsight:5 0 (5.0 + 0.0 Offset), Prism Const. 0 0mm
--Backup to archive 46863050 Date 08-06-2007 Time 16 41 34
--Data Collector Serial Number: FS74A57479
--Activating Total Station: Leica TPS Series [1105], COM1, 9600 baud, no parity
--Foresight Target:My Prism, HR 5.0 (5 0 + 0 0 Offset), Prism Const 0 0mm
--Data Collector Serial Number. FS74A57479
--Activating Total Station Leica TPS Series [1105], COM1, 9600 baud, no parity
--Foresight Target My Prism, HR:5 0 (5.0 + 0.0 Offset), Prism Const. 0 0mm
--Data Collector Serial Number: FS74A57479
--Activating Total Station: Leica TPS Series [1105], COM1, 9600 baud, no parity
--Foresight Target:My Prism, HR 5.0 (5 0 + 0 0 Offset), Prism Const 0.0mm
--Data Collector Serial Number. FS74A57479
--Activating Total Station Leica TPS Series [1105], COM1, 9600 baud, no parity
--Foresight Target My Prism, HR:5 0 (5 0 + 0.0 Offset), Prism Const 0 0mm
--Data Collector Serial Number. FS74A57479
--Activating Total Station: Leica TPS Series [1105], COM1, 9600 baud, no parity
--Data Collector Serial Number FS74A57479
--Activating Total Station Leica TPS Series [1105], COM1, 9600 baud, no parity
--Data Collector Serial Number: FS74A57479
--Activating Total Station: Leica TPS Series [1105], COM1, 9600 baud, no parity
--Foresight Target:My Prism, HR 5.0 (5 0 + 0 0 Offset), Prism Const 0.0mm
OC,OP7,N 7653.302669,E 4959 210729,EL329.405942,--stone nw63
--HR 5 0 (5 0 + 0.0 Offset)
LS,HI5.000,HR5 000
BK,OP7,BP6,BS,BC0 0000
--Fixed HR at Backsight:0 0 (0 0 + 0 0 Offset), Prism Const. 0 0mm
--BS check 7 - 6 ZE82 1349,SD261 816,HD err= -0 001052, VD err= 4 873176
--BS Circle check angular err= 51.5550
--RD,BD 1 359 5958
--RD,FD 1:142.1930
--RD,ZD 1:98.3622
--MD,SD 1 54 23
--RF,OP7,FP70,AR142.1930,ZE98 3622,SD54 23,HR5 0,--40 df stmp
--RD,FV 1:322.1928
--RD,ZV 1 261 2344
--MD,SD 1 54 228
--RF,OP7,FP70,AR322.1928,ZE261 2344,SD54 228,HR5 0,--40 df stmp
--RD,BV 1:180.0003
--Horizontal Angle Error 0 0007
--Zenith Angle Error: 0 0006
--Slope Distance Error 0.002
--Horizontal Angle Error compares to the average 0 0000
--Zenith Angle Error compares to the average 0 0000
--Slope Distance Error compares to the average. 0 0
SS,OP7,FP70,AR142.1929,ZE98 3619,SD54 229,--40 df stmp
--RD,BD 1 0 0000
--RD,FD 1 356 1223
--RD,ZD 1:82.5500
--MD,SD 1 26.362
--RF,OP7,FP71,AR356 1223,ZE82 5500,SD26 362,HR5 0,--1r 6 dn
--RD,FV 1 176.1221
--RD,ZV 1 277 0445
--MD,SD 1 26 362
--RF,OP7,FP71,AR176 1221,ZE277 0445,SD26 362,HR5 0,--1r 6 dn
--RD,BV 1 179 5951

--Horizontal Angle Error: 0 0007
--Zenith Angle Error 0.0015
--Slope Distance Error 0.0
--Horizontal Angle Error compares to the average 0 0000
--Zenith Angle Error compares to the average 0 0000
--Slope Distance Error compares to the average 0.0
SS,OP7,FP71,AR356.1227,ZE82 5508,SD26 362,--1r 6 dn
--RD,BD 1:0 0000
--RD,FD 1:22 3909
--RD,ZD 1.90 0700
--MD,SD 1.32 945
--RF,OP7,FP72,AR22 3909,ZE90.0700,SD32.945,HR5 0,--9 df
--RD,FV 1:202.3905
--RD,ZV 1 269 5246
--MD,SD 1 32.944
--RF,OP7,FP72,AR202 3905,ZE269 5246,SD32 944,HR5 0,--9 df
--RD,BV 1 179.5959
--Horizontal Angle Error 0.0003
--Zenith Angle Error 0 0014
--Slope Distance Error 0 001
--Horizontal Angle Error compares to the average 0.0000
--Zenith Angle Error compares to the average 0 0000
--Slope Distance Error compares to the average 0 0
SS,OP7,FP72,AR22 3908,ZE90 0707,SD32 944,--9 df
--RD,BD 1:0 0000
--RD,FD 1:169 0230
--RD,ZD 1:98 5528
--MD,SD 1:18 875
--RF,OP7,FP73,AR169 0230,ZE98.5528,SD18.875,HR5 0,--1r 7 dn
--RD,FV 1 349 0224
--RD,ZV 1 261.0419
--MD,SD 1 18.875
--RF,OP7,FP73,AR349.0224,ZE261 0419,SD18 875,HR5 0,--1r 7 dn
--RD,BV 1 180.0004
--Horizontal Angle Error 0 0010
--Zenith Angle Error 0 0013
--Slope Distance Error 0.0
--Horizontal Angle Error compares to the average 0 0000
--Zenith Angle Error compares to the average 0 0000
--Slope Distance Error compares to the average 0.0
SS,OP7,FP73,AR169 0225,ZE98 5535,SD18 875,--1r 7 dn
--RD,BD 1 0 0003
--RD,FD 1 101.4415
--RD,ZD 1 109.3511
--MD,SD 1 15.004
--RF,OP7,FP74,AR101 4415,ZE109 3511,SD15 004,HR5 0,--10 df
--RD,FV 1:281 4412
--RD,ZV 1:250 2429
--MD,SD 1 15 004
--RF,OP7,FP74,AR281 4412,ZE250 2429,SD15 004,HR5 0,--10 df
--RD,BV 1 179.5957
--Horizontal Angle Error 0 0003
--Zenith Angle Error 0.0020
--Slope Distance Error 0 0
--Horizontal Angle Error compares to the average 0 0000
--Zenith Angle Error compares to the average 0 0000
--Slope Distance Error compares to the average 0 0

SS,OP7,FP74,AR101.4414,ZE109.3521,SD15 004,--10 df
 SP,PN666,N 8973.0000,E 6153.0000,EL0 0000,--1/4 calc
 OC,OP102,N 7995.730693,E 6274.789701,EL148 553532,--spike
 BK,OP102,BP101,BS,BC0 0000
 --Fixed HR at Backsight 0.0 (0 0 + 0.0 Offset), Prism Const .0 0mm
 OC,OP102,N 7995.730693,E 6274 789701,EL148.553532,--spike
 BK,OP102,BP101,BS,BC0 0000
 --Fixed HR at Backsight:5 0 (5.0 + 0 0 Offset), Prism Const. 0.0mm
 OC,OP102,N 7995 730693,E 6274.789701,EL148 553532,--spike
 BK,OP102,BP101,BS,BC0.0000
 --Fixed HR at Backsight 5.0 (5 0 + 0 0 Offset), Prism Const 0 0mm
 --BS check 102 - 101 ZE83.0744,SD1289.712,HD err= 0.014926, VD err= -0 536695
 --BS Circle check angular err= 74 2940
 --RD,BD 1 0 0001
 --RD,FD 1 339 0633
 --RD,ZD 1 84 2525
 --MD,SD 1 984 785
 --RF,OP102,FP8,AR339.0633,ZE84 2525,SD984 785,HR5 0,--1/4 3/2 14-6
 --RD,FV 1:159.0620
 --RD,ZV 1 275.3438
 --MD,SD 1 984 782
 --RF,OP102,FP8,AR159 0620,ZE275 3438,SD984 782,HR5 0,--1/4 3/2 14-6
 --RD,BV 1 179 5958
 --Horizontal Angle Error. 0 0010
 --Zenith Angle Error 0.0003
 --Slope Distance Error: 0 003
 --Horizontal Angle Error compares to the average 0 0000
 --Zenith Angle Error compares to the average 0 0000
 --Slope Distance Error compares to the average 0 0
 TR,OP102,FP8,AR339.0627,ZE84 2524,SD984 784,--1/4 3/2 14-6
 OC,OP8,N 8962 370437,E 6112 779157,EL244.254797,--1/4 3/2 14-6
 BK,OP8,BP102,BS,BC0 0000
 --Fixed HR at Backsight 5.0 (5 0 + 0 0 Offset), Prism Const 0 0mm
 OC,OP8,N 8962.370437,E 6112 779157,EL244 254797,--1/4 3/2 14-6
 BK,OP8,BP102,BS,BC0.0000
 --Fixed HR at Backsight 5 0 (5 0 + 0 0 Offset), Prism Const 0.0mm
 --BS check 8 - 102 ZE95 3451,SD984 782,HD err= -0 008223, VD err= -0 068755
 --BS Circle check angular err= 70 4416
 SS,OP8,FP80,AR142 0318,ZE71 4512,SD101 607,--22 oak
 SS,OP8,FP81,AR142.4525,ZE71 3433,SD102 867,--22 oak
 SS,OP8,FP82,AR35.0658,ZE128.0541,SD6 098,--23 df stmp
 SS,OP8,FP83,AR35 0658,ZE128 0540,SD6 100,--23 df stmp
 --DP,PN83
 SS,OP8,FP83,AR23 3131,ZE130 3609,SD7 515,--23 df stmp
 SS,OP8,FP84,AR221 0554,ZE81.1140,SD42 580,--30 df stmp
 --RD,BD 1:0 0000
 --RD,FD 1 9 2536
 --RD,ZD 1 117 5453
 --MD,SD 1 20 226
 --RF,OP8,FP85,AR9 2536,ZE117 5453,SD20 226,HR5 0,--10 df
 --RD,FV 1 189 2521
 --RD,ZV 1 242 0451
 --MD,SD 1:20 224
 --RF,OP8,FP85,AR189 2521,ZE242 0451.SD20 224,HR5 0,--10 df
 --RD,BV 1 179 5943
 --Horizontal Angle Error 0 0002
 --Zenith Angle Error 0.0016

--Slope Distance Error: 0 002
--Horizontal Angle Error compares to the average: 0 0000
--Zenith Angle Error compares to the average: 0 0000
--Slope Distance Error compares to the average 0 0
SS,OP8,FP85,AR9.2537,ZE117.5501,SD20.225,--10 df
--RD,BD 1:0 0000
--RD,FD 1:257 3922
--RD,ZD 1:94 3932
--MD,SD 1 32.845
--RF,OP8,FP86,AR257.3922,ZE94.3932,SD32 845,HR5 0,--1r 9 dn
--RD,FV 1 77.3404
--RD,ZV 1 265 2021
--MD,SD 1 32 848
--RF,OP8,FP86,AR77 3404,ZE265 2021.SD32.848,HR5 0,--1r 9 dn
--RD,BV 1 179 5452
--Horizontal Angle Error 0.0010
--Zenith Angle Error: 0 0007
--Slope Distance Error 0.003
--Horizontal Angle Error compares to the average 0 0000
--Zenith Angle Error compares to the average 0 0000
--Slope Distance Error compares to the average 0 0
SS,OP8,FP86,AR257.3917,ZE94 3936,SD32 846,--1r 9 dn
--RD,BD 1 0.0000
--RD,FD 1:101 1157
--RD,ZD 1:85 3126
--MD,SD 1:15 496
--RF,OP8,FP87,AR101.1157,ZE85 3126.SD15 496,HR5 0,--1r 9 dn
--RD,FV 1 281 1147
--RD,ZV 1 274 2748
--MD,SD 1 15 496
--RF,OP8,FP87,AR281 1147,ZE274 2748,SD15 496,HR5 0,--1r 9 dn
--RD,BV 1:179 5956
--Horizontal Angle Error 0 0006
--Zenith Angle Error 0.0046
--Slope Distance Error: 0 0
--Horizontal Angle Error compares to the average 0 0000
--Zenith Angle Error compares to the average 0 0000
--Slope Distance Error compares to the average 0 0
SS,OP8,FP87,AR101 1154,ZE85 3149,SD15 496,--1r 9 dn
SP,PN666,N 6322 3704,E 6112 7792,EL244 2548,--Cogo
--Data Collector Serial Number FS74A57479
--Activating Total Station Leica TPS Series [1105], COM1, 9600 baud, no parity
--Foresight Target My Prism, HR-5 0 (5 0 + 0 0 Offset), Prism Const 0 0m

JB,NM46863040,DT08-03-2007,TM13:29 22
MO,AD0,UN2,SF1.0,EC1,EO0 0,AU0
SP,PN1,N 5000.0,E 5000 0,EL100.0,--spike
--Data Collector Serial Number FS74A57479
--Activating Total Station. Manual Mode
SP,PN2,N 5309 115347,E 5063 129827,EL129 684026,--spike
SP,PN3,N 6045.08364,E 5198.3436,EL198.837716,--spike
SP,PN4,N 6471 451344,E 5229 99182,EL246.647172,--spike
SP,PN5,N 6673.318078,E 5530 017729,EL330 62956,--spike
SP,PN6,N 7908 199435,E 4911.013567,EL364.928194,--spike
SP,PN50,N 7652.39984,E 4972 013566,EL95 057396,--Cogo
SP,PN51,N 4981 995261,E 4960.361654,EL95.057396,--ir/ypc
SP,PN101,N 9251 000165,E 6527.396145,EL303 386559,--spike
SP,PN102,N 7995.730693,E 6274 789701,EL148 553532,--spike
SP,PN103,N 8155 113232,E 7168.215887,EL-45.670707,--spike
SP,PN104,N 7859 093618,E 7527 098327,EL-136 340289,--spike
SP,PN105,N 7659.79664,E 7602.204934,EL-157.080306,--5/8 ir
SP,PN150,N 7648 559826,E 7612 210773,EL95 057396,--Cogo
SP,PN200,N 7653.092074,E 4961 358791,EL95.057396,--grant bndy calc
SP,PN201,N 7659 788167,E 7602.210302,EL0 0,--grant bndy calc
--Coordinates imported from 46863040.cr5 as US Survey Feet
--Activating Total Station Leica TPS Series [1105], COM1, 9600 baud, no parity
--Foresight Target My Prism, HR:5 0 (5 0 + 0 0 Offset), Prism Const. 0.0mm
--Date: 08-03-2007 Time 13:54 52
--Date 08-03-2007 Time: 13 54 54
--Data Collector Serial Number FS74A57479
--Activating Total Station Leica TPS Series [1105], COM1, 9600 baud, no parity
--Foresight Target My Prism, HR:5 0 (5 0 + 0.0 Offset), Prism Const 0.0mm
OC,OP105,N 7659.79664,E 7602.204934,EL-157 080306,--5/8 ir
--HR 5 0 (5 0 + 0.0 Offset)
LS,HI5 0,HR5 0
BK,OP105,BP104,BS339 2103,BC0.0000
--Fixed HR at Backsight:0.0 (0.0 + 0.0 Offset), Prism Const 0 0mm
--BS check 105 - 104:ZE84 1701,SD214 053,HD err= 0 00879, VD err= 5 581529
--BS Circle check . angular err= 82 5644
--RD,BD 1 24 1830
--RD,FD 1 0.0000
--RD,ZD 1
--MD,SD 1
--RF,OP105,FP,AR0 0000,ZE,SD,HR5 0,--
--RD,FV 1 180 0000
--RD,ZV 1
--MD,SD 1
--RF,OP105,FP,AR180 0000,ZE,SD,HR5 0,--
--RD,BV 1 180 0000
--Horizontal Angle Error 0 0000
--Zenith Angle Error 0.0000
RD,BD 1 0 0005
RD,FD 1 24 1837
RD,ZD 1 14 2748
MD,SD 1 71 34
RF,OP105,FP106,AR24 1837,ZE114 2748,SD71.34,HR5 0,--4ft df strp
RD,FV 1 204 1859
RD,ZV 1 245 3144
MD,SD 1 71 342
RF,OP105,FP106,AR204 1859,ZE245 3144,SD71 342,HR5 0,--4ft df strp
RD,BV 1 180 0000

```

--Horizontal Angle Error  0 0027
--Zenith Angle Error  0.0028
--Slope Distance Error  0 002
--Horizontal Angle Error compares to the average: 0 0000
--Zenith Angle Error compares to the average  0 0000
--Slope Distance Error compares to the average  0.0
SS,OP105,FP106,AR24 1846,ZE114 2802,SD71.341,--4ft df strmp
SP,PN107,N 7658 759279,E 7601.749913,EL-186 627707,--Cogo
--RD,BD 1 0 0000
--RD,FD 1:0.0000
--RD,ZD 1
--MD,SD 1:
--RF,OP105,FP,AR0 0000,ZE,SD,HR5 0,--
--RD,FV 1:180 0000
--RD,ZV 1
--MD,SD 1
--RF,OP105,FP,AR180.0000,ZE,SD,HR5.0,--
--RD,BV 1 180 0000
--Horizontal Angle Error: 0 0000
--Zenith Angle Error.  0 0000
RD,BD 1 0.0004
RD,FD 1 177 1229
RD,ZD 1:70 5247
MD,SD 1 28.862
RF,OP105,FP60,AR177 1229,ZE70 5247,SD28 862,HR5 0,--1r/ypc
RD,FV 1 357.1222
RD,ZV 1 289 0707
MD,SD 1:28 865
RF,OP105,FP60,AR357.1222,ZE289.0707,SD28.865,HR5.0,--1r/ypc
RD,BV 1:179 5955
--Horizontal Angle Error.  0 0002
--Zenith Angle Error: 0 0006
--Slope Distance Error: 0 003
--Horizontal Angle Error compares to the average: 0 0000
--Zenith Angle Error compares to the average  0 0000
--Slope Distance Error compares to the average: 0 0
SS,OP105,FP60,AR177.1226,ZE70 5250,SD28.8635,--1r/ypc
OC,OP60,N 7634.776226,E 7613.054059,EL-147.626381,--1r/ypc
BK,OP60,BP104,BS339 0202,BC0 0000
--Fixed HR at Backsight 0.0 (0.0 + 0 0 Offset), Prism Const  0 0mm
--BS check 60 - 104 ZE87 3256,SD240 445,HD err= 0 002754, VD err= 3 998182
--BS Circle check  angular err= 32 2723
RD,BD 1 0 0000
RD,FD 1:357 3509
RD,ZD 1 113.5031
MD,SD 1 29 826
RF,OP60,FP61,AR357 3509,ZE113 5031,SD29 826,HR5 0,--3 25 bd dlc
RD,FV 1 177 3503
RD,ZV 1 246 0913
MD,SD 1:29 826
RF,OP60,FP61,AR177 3503,ZE246 0913,SD29 826,HR5 0,--3.25 bd dlc
RD,BV 1 179 5959
--Horizontal Angle Error  0 0005
--Zenith Angle Error  0.0016
--Slope Distance Error  0 0
--Horizontal Angle Error compares to the average  0 0000
--Zenith Angle Error compares to the average  0 0000

```

```

--Slope Distance Error compares to the average 0.0
SS,OP60,FP61,AR357 3507,ZE113.5039,SD29 826,--3.25 bd dlc
OC,OP61,N 7659 816436,E 7602.228002,EL-159 683541,--3 25 bd dlc
BK,OP61,BP104,BS339.2035,BC0 0000
--Fixed HR at Backsight:0 0 (0 0 + 0 0 Offset), Prism Const 0 0mm
OC,OP61,N 7659.816436,E 7602 228002,EL-159.683541,--3 25 bd dlc
BK,OP61,BP104,BS339 2035,BC0.0000
--Fixed HR at Backsight:0.0 (0.0 + 0 0 Offset), Prism Const. 0.0mm
--BS check 61 - 104 ZE84 0727,SD214 09,HD err= -0 004178, VD err= 3.574709
--BS Circle check · angular err= 54.1443
RD,BD 1.0 0007
RD,FD 1 262 3707
RD,ZD 1.70 0410
MD,SD 1:27 599
RF,OP61,FP62,AR262 3707,ZE70 0410,SD27 599,HR5.0,--1r 12 dn
RD,FV 1:82 3706
RD,ZV 1 289 5543
MD,SD 1 27 595
RF,OP61,FP62,AR82.3706,ZE289.5543,SD27.595,HR5 0,--1r 12 dn
RD,BV 1 180 0008
--Horizontal Angle Error 0.0002
--Zenith Angle Error. 0.0007
--Slope Distance Error 0.004
--Horizontal Angle Error compares to the average 0 0000
--Zenith Angle Error compares to the average 0 0000
--Slope Distance Error compares to the average 0 0
SS,OP61,FP62,AR262.3659,ZE70.0414,SD27.597,--1r 12 dn
RD,BD 1 0.0006
RD,FD 1 102.4154
RD,ZD 1.107 4848
MD,SD 1 31.851
RF,OP61,FP63,AR102 4154,ZE107 4848,SD31 851,HR5 0,--1r 7 dn
RD,FV 1:282 4139
RD,ZV 1 252 1105
MD,SD 1 31 851
RF,OP61,FP63,AR282.4139,ZE252.1105,SD31 851,HR5 0,--1r 7 dn
RD,BV 1 180 0021
--Horizontal Angle Error 0.0030
--Zenith Angle Error 0 0007
--Slope Distance Error 0 0
--Horizontal Angle Error compares to the average 0 0000
--Zenith Angle Error compares to the average 0 0000
--Slope Distance Error compares to the average 0 0
SS,OP61,FP63,AR102 4133,ZE107 4852,SD31.851,--1r 7 dn
--RD,BD 1 0 0000
--RD,FD 1:0 0000
--RD,ZD 1
--MD,SD 1
--RF,OP61,FP,AR0 0000,ZE,SD,HR5 0,--
--RD,FV 1 180 0000
--RD,ZV 1
--MD,SD 1
--RF,OP61,FP,AR180 0000,ZE,SD,HR5 0,--
--RD,BV 1 180 0000
--Horizontal Angle Error: 0 0000
--Zenith Angle Error. 0 0000
SS,OP61,FP64,AR54 5651,ZE131.5543,SD11.584,--10 w fir

```

SS,OP61,FP65,AR54 5652,ZE131 5542,SD11 586,--10 w fir
RD,BD 1:0 0000
RD,FD 1 311.2053
RD,ZD 1:96 1054
MD,SD 1.42 954
RF,OP61,FP66,AR311 2053,ZE96 1054,SD42 954,HR5 0,--7w fir
RD,FV 1.131 2043
RD,ZV 1 263.4856
MD,SD 1.42 954
RF,OP61,FP66,AR131 2043,ZE263 4856,SD42.954,HR5 0,--7w fir
RD,BV 1.179 5951
--Horizontal Angle Error 0.0001
--Zenith Angle Error. 0 0010
--Slope Distance Error. 0 0
--Horizontal Angle Error compares to the average 0 0000
--Zenith Angle Error compares to the average: 0 0000
--Slope Distance Error compares to the average. 0 0
SS,OP61,FP66,AR311 2053,ZE96 1059,SD42 954,--7w fir
OC,OP6,N 7908.199435,E 4911 013567,EL364 928194,--spike
BK,OP6,BP101,BS50 1656,BC0.0000
--Fixed HR at Backsight 5.0 (5 0 + 0 0 Offset), Prism Const 0 0mm
OC,OP6,N 7908 199435,E 4911.013567,EL364.928194,--spike
BK,OP6,BP101,BS50 1656,BC0 0000
--Fixed HR at Backsight 5 0 (5.0 + 0 0 Offset), Prism Const :0 0mm
--BS check 6 - 101:ZE91.4158,SD2102 321,HD err= 0 020081, VD err= -0.71534
--BS Circle check angular err= 41 4345
BK,OP6,BP101,BS50.1656,BC241.2647
--Fixed HR at Backsight 5.0 (5.0 + 0 0 Offset), Prism Const. 0 0mm
OC,OP6,N 7908 199435,E 4911.013567,EL364.928194,--spike
BK,OP6,BP101,BS50 1656,BC0 0000
--Fixed HR at Backsight 5 0 (5 0 + 0 0 Offset), Prism Const .0 0mm
--BS check 6 - 101:ZE91 4203,SD2102 325,HD err= 0 022572, VD err= -0 766398
--BS Circle check angular err= 118 3322
BK,OP6,BP101,BS50.1656,BC4 3755
--Fixed HR at Backsight 5.0 (5.0 + 0 0 Offset), Prism Const 0 0mm
OC,OP6,N 7908 199435,E 4911.013567,EL364.928194,--spike
BK,OP6,BP101,BS50 1656,BC0 0000
--Fixed HR at Backsight 5 0 (5 0 + 0 0 Offset), Prism Const .0 0mm
--BS check 6 - 101:ZE91.4206,SD2102 321,HD err= 0 017669, VD err= -0.796843
--BS Circle check angular err= 118 3302
RD,BD 1 359.5959
RD,FD 1:119 0039
RD,ZD 1 97.4749
MD,SD 1 261 834
RF,OP6,FP7,AR119 0039,ZE97.4749,SD261 834,HR5 0,--stone nw63
RD,FV 1 299.0026
RD,ZV 1:262 1207
MD,SD 1 261 834
RF,OP6,FP7,AR299 0026,ZE262 1207,SD261 834,HR5 0,--stone nw63
RD,BV 1 179 5950
--Horizontal Angle Error 0 0004
--Zenith Angle Error. 0 0004
--Slope Distance Error. 0 0
--Horizontal Angle Error compares to the average 0 0000
--Zenith Angle Error compares to the average 0 0000
--Slope Distance Error compares to the average. 0 0
TR,OP6,FP7,AR119 0038,ZE97 4751,SD261 834,--stone nw63

OC,OP7,N 7653 302669,E 4959.210729,EL329.405942,--stone nw63
BK,OP7,BP6,BS349.1734,BC0.0000
--Fixed HR at Backsight:5 0 (5 0 + 0 0 Offset), Prism Const 0 0mm
--Backup to archive 46863050 Date 08-06-2007 Time. 16:41 34
--Data Collector Serial Number FS74A57479
--Activating Total Station. Leica TPS Series [1105], COM1, 9600 baud, no parity
--Foresight Target My Prism, HR 5.0 (5 0 + 0 0 Offset), Prism Const. 0 0mm
--Data Collector Serial Number: FS74A57479
--Activating Total Station: Leica TPS Series [1105], COM1, 9600 baud, no parity
--Foresight Target My Prism, HR 5 0 (5.0 + 0 0 Offset), Prism Const 0 0mm

N. E. corner of George Smith DLC 63, Twp. 14 S., R. 6 W. W. M. 24-5

Reestablishment by J. A. Ganong

April 1912

Set two stones 5" x 7" and 7" x 9"

Fir 20" in diam bears N 4° E

1.00 chains (standing)

Fir 20" in diam bears N 69° 20' W

2.324 chains

Witness Bristow

BENTON COUNTY SURVEYORS OFFICE - CORNER RESTORATION

2345

T 14 S, R 6 W, W B & M, BENTON COUNTY, OREGON

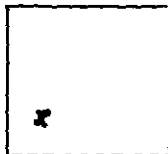
SECTION 2

The information shown hereon was taken from
the referenced county survey. Date: 7/30/90

REPORTED BY R. S. CASTLEBERRY

TITLE O.L.S. # 684

DATE SEPT. 12, 1980



● OFFICIAL CORNER FOUND

○ ✓ CORNER SET

D.L.C. CORNER COMMON TO SEC 2
IS 130° EDWARD @ N.E. CORNER OF THE
GEORGE SMITH DESCRIBE D.L.C. # 63

ADDITIONAL INFORMATION

C.S. # 82 (GALLOWAY) CALLS TWO
STUMPS AT CORNER & TWO BTs.
BOTH BTs FALL IN GROVE OF TREES
(MOSTLY FIR), SIZES 8" TO 12".
FOUND ROTTED FIR STUMP N 4° E. 66.0'
WITH NO MARKS & NO OTHER STUMPS
NEAR-BY. STONES NOT FOUND
FOUND OLD BLOWDOWN @ N.W. BT
POSITION WITH NO OTHER TREE REMAINS
NEAR-BY. SEE C.S. # 7133
FOUND ROTTED CEDAR POST 3.5 EAST

OVER

LEGIBLE MARKS ON BEARING OBJECTS

BLAZED AND FIR TREES, SET
R.R. SPIKE IN LOWER BLAZE.

KIND

FIR

FIR

SIZE

8"

6"

BEARING

N 32° 57 E

N 66° 23 W

DISTANCE

9.4'

22.2'

BT TAG POSTED

8.69

21.78' to

TO R.R. SPIKE

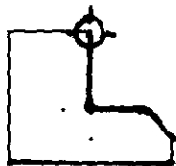
R.R. SPIKE

BENTON COUNTY SURVEYORS OFFICE - CORNER RESTORATION

2482

T. 14 S., R. 6 W., W B & M, BENTON COUNTY, OREGON

SECTION 2



The information shown hereon was taken from
the referenced county survey. Date. 7/30/90
No. 7133

● OFFICIAL CORNER FOUND

○ CORNER SET

REPORTED BY R.S. CASTLE BERRY

TITLE PROF. LAND SURVEYOR

DATE JULY 9, 1965

CURRENT DATE - SEPT. 16, 1980

NNE CORNER COMMON TO SEC 2
IS 3/8 x 30" IRON ROD
DESCRIBE

ADDITIONAL INFORMATION

NNE CORNER GEORGE SMITH
DLC 63

LEGIBLE MARKS ON BEARING OBJECTS

	ORIG.	ORIG.	NEW	NEW
KIND	FIR	ROTTED CEDAR POST	FIR	FIR
SIZE	40"		8"	6"
BEARING	N4°E	E	N35°57'E	N56°23'W
DISTANCE	660'	35'	94' <small>OLD FACE</small>	21.78' <small>FACE</small> 22.2' <small>Q</small>
BT TAG POSTED			R.R. SPIKE	RR SPIKE

OVER