

CORNER FILE TRACKING

H:\Survey\Corners\Misc\Filetrac.doc

11/23/98

CORNER NUMBER
147140500

STEP	HISTORY()	RESTORATION()
Form Prepared, DB	2/17/04	2/20/04
Field Inspection, DB	2/18/04	2/18/04
Form Checked, DB	3/02/04	3/02/04
Form Edited, DB	3/19/04	3/19/04
Form Signed, DB	3/22/04	3/22/04
Authorize Payment, DB	—	—
Archive Digital Files	✓ 3/24/04	3/24/04
Collect Documents	✓ 3/24/04	3/24/04
Scanned	3/26/04	3/26/04
Copy For Filming	✓ 3/24/04	3/24/04
Filed, DB		
Finish index (count unit)	2/18/04	2/18/04
Filmed (Archived), DB		

(DB) = Entry needed in database (Access).

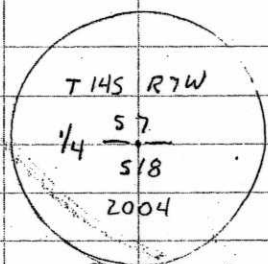
COMMENTS:

REMONUMENTING 1/4 ⁵⁷/₁₈ T14S R7W

Fd 27" X 10" X 4" STONE NO MKS VISIBLE.
 3" ↓ IN SKID RD. Fd REMAINS OF
 N.W. GLO BT - NOW ± 5' DIA ROTTEN
 D. FIR STUMP - NO MKS SET REBAR &
 YPC IN ± CTR 8" ↓. Fd 16" OAK
 CSBT W/ ROTTEN FACE SET ALUM NAIL & PLASTIC
 WASH. IN SLY BASE. Fd " D. FIR STUMP
 W/ HEALED FACE & " D. FIR STUMP W/ HEALED
 FACE AS TAGGED PER RECORD [10] & SCRIBED
 PER RECORD [11]

HELD HIGH POINT ON STONE FOR TRUE COR
 POSITION. REMOVED STONE AND SET
 2" X 30" ALUM PIPE W/ 3/4" ALUM CAP
 RIVETED TO TOP 5" DEEP MKD AS SHOWN.
 BURIED STONE ON N SIDE NEW MON. IN
 HORZ POSITION & 3" DEEP
 SET 6' ORANGE CARSONITE POST 0.5 SOUTH

JUL 5. FIC & S MT
 S. MT 0.457 mi
 N.W. ? TO COR
 IN SKID RD

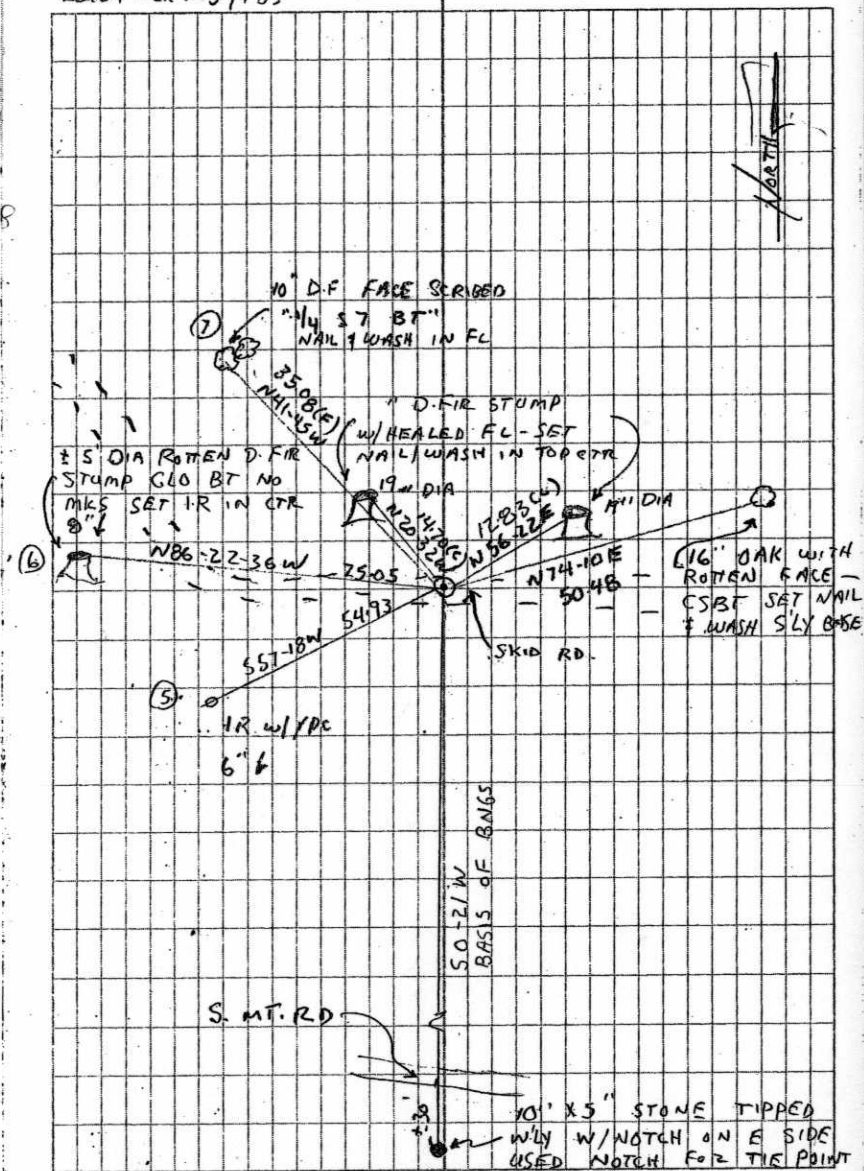


3/4" ALUM. CAP

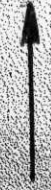
CLD'y, MILD
 50°F 29.8" Hg
 LEICA TCR 1105 / TDS

2/18/04
 D. DEAN
 B. ALTENBACH

22/7



Survey #54



1/4 Cr. 2nd Sec. 7 & 18 in T 145 R 7 W. for
Set Sandstone 24 x 10 x 4 for Cor. one tree standing, other tree gone.
Remained original tree 4 ft 3 1/2" N 87° W 1 1/2 " 9" N 74° E. 754 Witness Andrew & Anderson.
Marked Oak 20" diam. to S 21° E. " Post oak stump
Witnessed by F. B. & S. M. Wayfield. R. 517 Cho. dist. S. 1/2 Sec. dist.

" #54

S. E. Cor. Geo. H. Pycraft. T. 145, R. 7 W. # 39 in T 145 R 7 W.
Set White Stone 14 x 12 x 10 for Cor. one tree standing
Marked Oak 15" diam. to S 61° 05' E. 349 Cho. dist.
Witness, same as above.

" #54

1/4 W. Cr. Sand Fudge T. 145, R. 7 W. # 43 in T 145 R 7 W.
Set Sandstone 12 x 6 x 5 for Cor. stump standing, imprint of original
Marked, cypress 10" diam. to S 60° - E. 180 Cho. dist.
Witnesses, F. B. & S. M. Wayfield, Wm. Malone, G. H. Brinton & Geo. Key.

" #54

1/4 E. Cr. Sand Fudge T. 145, R. 7 W. # 38 in T 145 R 7 W.
Set Sandstone 18 x 6 x 5 for Cor. stump standing (old road)
Marked, W. Fir 28" diam. to N 77° 15' E. 308 Cho. dist.
Witnesses F. B. & S. M. Wayfield, Wm. Malone & C. P. Malone.

" #54

S. E. Cor. Sand Fudge T. 145, R. 7 W. # 38 in T 145 R 7 W.
Set Fir limb stake for Cor., both trees down, but marks plain.
Marked, Fir 60" diam. to S 51° 45' E. 1377 S. 1/2 Sec. dist.
" 70 " " N 34° - W. 1003 "

1/4-Corner between sections 7 and 18, twp. 14 S R 7 W

Reestablishment by W. C. Galloway

Date 11/09/1909

Set stone 24 x 10 x 4 for corner, one tree standing, other tree gone.

Original tree (Fir) 36" in diam bears N 87° W 1.12 chains dist.
Oak 20" in diam bears S 21° E 2.517 chains dist.

Witnessed by F. B. and S. N. Warfield

Replacement by W. C. Galloway

March 23, 1942

Oak 3" in diam bears N. 37° W .151 chains

Oak 9" in diam bears N 74° E .754 chains

Part of Oak stump left

Witnesses Andrew and Anderson

BENTON COUNTY SURVEYORS OFFICE - CORNER RESTORATION

7534

T 14 S, R 7 W, W. B. & M., BENTON COUNTY, OREGON

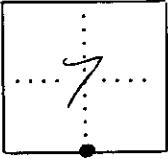
REPORTED BY Gary T Johnston

SECTION 7

The information shown hereon was taken from the referenced county survey. Date: 7/30/90

TITLE RPLS 146?

DATE March 23, 1981



● OFFICIAL CORNER FOUND

○ CORNER SET

5/4 CORNER COMMON TO SEC. 7 18 & _____
 IS Stone 24" x 10" x 4"
 DESCRIBE

ADDITIONAL INFORMATION

Found
14" Doug-fir N62°E 12 1/2 ft + BLM Yellow tag
12" " " N22°W 14 1/2 ft " "

These trees were used in 1972
and not scribed so I scribed
them 1/4 5/8 BT

Refer to C.S. #7275

OVER

LEGIBLE MARKS ON BEARING OBJECTS

	<u>1/4</u>	<u>1/4</u>		
	<u>5/8</u>	<u>5/8</u>		
	<u>BT</u>	<u>BT</u>		
KIND	<u>Doug-fir</u>	<u>Doug-fir</u>		
SIZE	<u>1/4</u>	<u>1/2</u>		
BEARING	<u>N62°E</u>	<u>N22°W</u>		
DISTANCE	<u>12 1/2 ft</u>	<u>14 1/2 ft</u>		
BT TAG POSTED	<u>✓</u>	<u>✓</u>		

DATE 02/17/2004TOWNSHIP 14SOUTH, RANGE 7 WEST, WILLAMETTE MERIDIAN; SECTION 7 CORNER SOUTH 1/4
DONATION LAND CLAIM NONE CORNER N/A**COMMON CORNER(S):**

NORTH 1/4 SECTION 18

RECORDS (INFORMATION IN *BOLD ITALICS* IS COUNTY STAFFS' INTERPRETATION OF THE RECORD)

BASED ON EXTENSIVE RESEARCH AND RECOVERY OF EVIDENCE, THIS OFFICE HAS DETERMINED THAT MOST GENERAL LAND OFFICE SURVEYORS MEASURED TO THE FACE OF BEARING TREES.

- [01] GENERAL LAND OFFICE (GLO) NOTES BY DENNIS HATHORN, D.S., DATED AUGUST 1856. *SET POST FROM WHICH A FIR 36 IN DIAMETER BEARS S36°W, 108 LKS (71.28 FEET) A FIR 36 IN DIAMETER BEARS N87°W, 112 LKS (73.92 FEET).*
- [02] COUNTY SURVEY NO. 152 (OLD NO. 54) FIELD NOTES (FIELD BOOK 4, PAGE 49) BY F. M. WILKES, C.S., DATED NOVEMBER 9, 1909. *REESTABLISHED 1/4 CORNER WITH SYENITE STONE 24" X 10" X 4". ONE FIR STANDING REMARKED. 20" OAK S21°E, 2.517 CHS (166.12 FEET) SLOPE DISTANCE.*
- [03] CORNER RESTORATION BOOK NO. 1, PAGE 55 BY F. M. WILKES, C.S. NO DATE GIVEN. *SET SYENITE STONE 24" X 10" X 4". REMARKED ORIGINAL TREE A 36" FIR, N87°W, 1.12 CHS (73.92 FEET). OTHER TREE GONE. MARKED 20" OAK, S21°E, 2.517 CHS (166.12 FEET) SLOPE DISTANCE.*
- [04] BENTON COUNTY CORNER RESTORATION NO. 2527. *TRANSCRIBED FROM RECORD [03] AND MAY CONTAIN ERRORS AND/OR OMISSIONS.*
- [05] COUNTY SURVEY NO. 2328 (OLD NO. 54) FIELD NOTES (FIELD BOOK 86, PAGE 7, BY W. C. GALLOWAY, C.S., DATED MARCH 23, 1942. *FOUND STONE MARKED C.S. ON NORTH FACE AND POINT IN TOP. FIR 36" N87°W, 112 LKS STANDING USED B FOR CENTER. OAK 3" N37°W, 0.151 CHS (9.97 FEET). OAK 9" N74°E, .754 CHS (49.76 FEET).*
- [06] CORNER RESTORATION BOOK NO. 1, PAGE 55 BY W. C. GALLOWAY, C.S., DATED MARCH 23, 1942. *PART OF OAK STUMP LEFT. OAK 3" N37°W, .151 CHS. OAK 9" N74°E, .754 CHS.*
- [07] BENTON COUNTY CORNER RESTORATION NO. 2527. *TRANSCRIBED FROM RECORD [06] AND MAY CONTAIN ERRORS AND/OR OMISSIONS.*
- [08] BENTON COUNTY MAP NO. 14-8-00005 BY W. C. GALLOWAY, C.S., NO DATE GIVEN. *SIMILAR INFORMATION AS RECORD [05].*
- [09] COUNTY SURVEY NO. 2128 FIELD NOTES (LOOSE LEAF) BY CURTIS HANSON, C.S., DATED JUNE 10, 1949. *FOUND STONE WITH C.S. ON NORTH FACE AND POINT ON TOP. OAK 3" N37°W, 0.151 CHS. OAK 9" N74°E, 0.754 CHS.*
- [10] ADMINISTRATIVE SURVEY BY B.L.M. CREW OF N. WOOD AND R. SMITH DATED JANUARY – FEBRUARY 1972. *STONE 24" X 10" X 4" BURIED IN GROUND. 10" DEAD OAK WITH ROTTEN FACE N74°E, 49.8 FEET. 40" ROTTEN FIR STUMP N87°W, 73.9 FEET. SET LOCATION TAGS ON 10" FIR, N62°E, 12.1 FEET AND 8" FIR N22°W, 14.6 FEET.*
- [11] COUNTY SURVEY NO. 7275 BY GARY JOHNSTON, P.L.S., DATED JANURAY 22, 1981 – MARCH 23, 1981. *24" X 10" X 4" STONE AND BEARING TREES REFERENCED BY BLM FROM 1972 SURVEY: 14" D. FIR N62°E, 12.1 FEET AND 12" D. FIR N22°W, 14.6 FEET. NEITHER TREE WAS SCRIBED. I MARKED "1/4 S7 BT" ON BOTH TREES.*
- [12] BENTON COUNTY CORNER RESTORATION NO. 2534 BY GARY JOHNSTON, P.L.S., DATED MARCH 23, 1981. *SIMILAR INFORMATION AS RECORD [10].*

NOTES:

THIS IS A MICROSOFT WORD 2000 DOCUMENT NAMED "47140500" CREATED FROM A BOILER PLATE DOCUMENT NAMED "HISTORY", WHICH HAS A STYLESHEET NAMED "CORNER" ATTACHED TO IT.

FIRM/AGENCY: BENTON COUNTY SURVEYOR'S OFFICE
ADDRESS: 360 S.W. AVERY AVE. CORVALLIS OR 97333; PH. 766-6821
RESEARCH BY: DAVID M. DEAN, P.L.S.
DATA ENTRY BY: DEAN

BENTON COUNTY CORNER RESTORATION FORM, PAGE 1 OF 2, 147140500R2**SEE CORNER HISTORY FORM FOR RECORDS ETC.**

CORNER RESTORATION FIELD BOOK NUMBER 22 PAGE(S) 7 DATE 02/18/2004
TOWNSHIP 14 SOUTH, RANGE 7 WEST, WILLAMETTE MERIDIAN; SECTION 7 CORNER S 1/4
DONATION LAND CLAIM NONE CORNER N/A
CONDITION REPORT ; REFERENCED OUT ; RENEWED XX; SURVEYED IN

LOCATION AND COMMENTS:

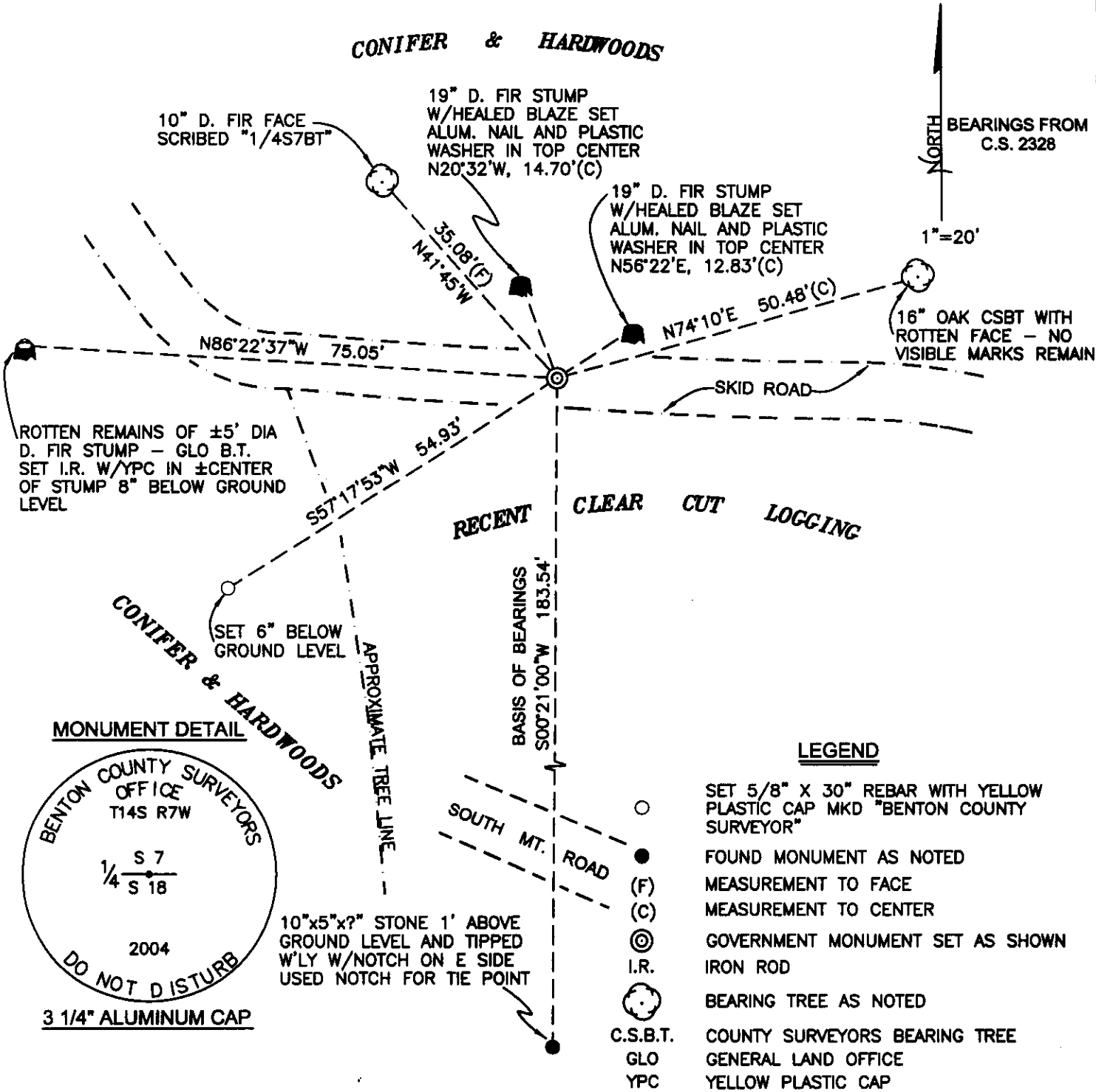
CORNER IS LOCATED IN A FLAT AREA IN THE CENTER OF AN OLD LOGGING SKID ROAD AT THE NORTHERLY EDGE OF A RECENT CLEAR CUT. TO REACH CORNER FROM THE JUNCTION OF SOUTH FORK ROAD AND SOUTH MOUNTAIN ROAD, TRAVEL ON SOUTH MOUNTAIN ROAD FOR 0.450 MILES; THEN NORTH 150 FEET TO CORNER. CORNER IS POOR FOR PREMARKING AND GPS CONTROL.

MONUMENTS AND ACCESSORIES FOUND (CONDITION AND SOURCE):

1. FOUND 27" x 10" x 4" STONE, FIRMLY SET AND UPRIGHT WITH A DEFINITE HIGH POINT, 3" BELOW GROUND LEVEL IN LOGGING SKID ROAD FOR CORNER POSITION. THE NORTH SIDE OF STONE APPEARS TO HAVE FLAKED OR CHIPPED OFF AND NO MARKS ("CS") COULD BE FOUND.
(SET SYENITE STONE 24" x 10" x 4" FROM ORIGINAL GLO BEARING TREE PER RECORDS [02] AND [03]).
(FOUND STONE WITH "CS" ON NORTH FACE PER RECORDS [05] AND [09]).
(FOUND 24" x 10" x 4" STONE BURIED IN GROUND PER RECORD [10]).
(FOUND 24" x 10" x 4" STONE PER RECORDS [11] AND [12]).
2. FOUND ROTTEN REMAINS OF NW GLO BEARING TREE, NOW A ±5' DIAMETER PARTIAL ROOT CROWN WITH NO VISIBLE MARK REMAINING. SET REBAR (SEE LEGEND ON PAGE 2 OF 2) IN APPROXIMATE CENTER OF STUMP REMAINS, N86°22'36"W, 75.05 FEET.
(36" FIR, N87°W, 73.92 FEET PER RECORD [01])
(ONE FIR STANDING PER RECORD [02]).
(36" FIR N87°W, 73.92 FEET PER RECORDS [03] AND [05]).
(40" ROTTEN FIR STUMP, N87°W, 73.9 FEET PER RECORD [10]).
3. FOUND 16" W. OAK COUNTY SURVEYORS BEARING TREE WITH A ROTTEN FACE, N74°10'E, 50.48 FEET TO CENTER. SET ALUMINUM NAIL AND PLASTIC WASHER IN SOUTHERLY BASE FOR DISTANCE MEASUREMENT.
(9" OAK N74°E, 49.76 FEET PER RECORDS [05], [06] AND [09]).
(10" DEAD OAK WITH ROTTEN FACE N74°E, 49.8 FEET PER RECORD [10]).
4. FOUND 19" D. FIR STUMP WITH HEALED BLAZE BEARING N20°32'W, 14.70 FEET TO CENTER. SET ALUMINUM NAIL AND PLASTIC WASHER IN TOP CENTER OF STUMP FOR DISTANCE AND ANGLE MEASUREMENT.
(SET LOCATION TAG ON 8" FIR, N22°W, 14.6 FEET PER RECORD [10]).
(FOUND 12" UNMARKED D. FIR AND MARKED "1/4 S7 BT", N22°W, 14.6 FEET PER RECORDS [11] AND [12]).
5. FOUND 19" D. STUMP WITH HEALED BLAZE BEARING N56°22'E, 12.83 FEET TO CENTER. SET ALUMINUM NAIL AND PLASTIC WASHER IN TOP CENTER OF STUMP FOR DISTANCE AND ANGLE MEASUREMENT.
(SET LOCATION TAG ON 10" FIR, N62°E, 12.1 FEET PER RECORD [10]).
(FOUND 14" UNMARKED D. FIR AND MARKED "1/4 S7 BT", N62°E, 12.1 FEET PER RECORDS [11] AND [12]).
6. FOUND 10" x 5" x ?" STONE, 1 FOOT ABOVE GROUND LEVEL WITH NOTCH ON EAST EDGE, S00°21'00"W, 183.54 FEET. DISTANCE AND BEARING TO NOTCH ON SAID EAST EDGE OF STONE. **BASIS OF BEARINGS FOR THIS RESTORATION.**
(4" x 10" x 24" STONE WITH NOTCH ON EAST CORNER, S00°05'20"W, 183.48 FEET PER RECORD [05]).
(NOTCH ON EAST CORNER OF STONE, S00°21'W, 183.48 FEET PER RECORD [08]).

MONUMENT SET (PROCEDURES AND DESCRIPTION):

HELD THE HIGH POINT OF STONE AS SET IN RECORD [02] FOR THE TRUE CORNER POSITION. REMOVED SAID STONE AND SET 2"x30" ALUMINUM PIPE WITH A 3 1/4" ALUMINUM DISK RIVITED TO THE TOP, 5" BELOW GROUND LEVEL AND MARKED AS SHOWN ON PAGE 2 OF 2. PLACED STONE ON THE NORTH SIDE OF NEW MONUMENT IN HORIZONTAL POSITION AND 3" BELOW GROUND LEVEL. SET 6 FOOT ORANGE CARSONITE "SURVEY MARKER" POST 0.5 FEET SOUTH OF CORNER MONUMENT.



NEW ACCESSORIES:

1. SET REBAR (SEE LEGEND) 8" BELOW GROUND LEVEL, N86°22'37"W, 75.05 FEET. REBAR IS SET IN ±CENTER OF GLO BEARING TREE REMAINS, NOW A ±5' DIA. BADLY ROTTEN D. FIR STUMP.
2. SET REBAR (SEE LEGEND) 6" BELOW GROUND LEVEL, S57°17'53"W, 54.93 FEET.
3. FACE SCRIBED A 10" D. FIR, N41°45'W, 35.08 FEET. SCRIBED "1/4 S7 BT" AND SET ALUMINUM NAIL AND PLASTIC WASHER IN BOTTOM OF BLAZE BELOW SCRIBS FOR DISTANCE AND ANGLE MEASUREMENT.

NOTES:

COMPASS DECLINATION IS 20° EAST. ALL MEASURED DISTANCES AND BEARINGS ARE TO THE CENTER OF THE OBJECT, UNLESS OTHERWISE NOTED. ALL BEARING TREES ARE PAINTED AND HAVE A B.T. TAG ATTACHED, FACING THE CORNER UNLESS OTHERWISE NOTED. ALL NEW BEARING TREES HAVE A PLASTIC WASHER (STAMPED "BENTON COUNTY SURVEYOR CORNER RESTORATION") ATTACHED (BY ALUMINUM NAIL) TO THE FACE, BELOW THE "BT" FOR DISTANCE AND ANGLE MEASUREMENT UNLESS OTHERWISE NOTED. THE DRAWING IS FROM AUTOCAD RELEASE 2002.

THIS RESTORATION WAS PERFORMED AT THE DIRECTION AND APPROVAL OF THE BENTON COUNTY SURVEYOR, David M. Dean

REGISTERED
PROFESSIONAL
LAND SURVEYOR

3/22/04 David M. Dean

OREGON
JULY 13, 1984
DAVID M. DEAN
2090

FIRM/AGENCY: BENTON COUNTY SURVEYOR'S OFFICE
ADDRESS: 360 S.W. AVERY AVE. CORVALLIS OR 97333; PH. 766-6821
PRESENT: DAVID M. DEAN, P.L.S. AND BERNIE ALTENBACH, SURVEY TECH.

RENEWAL DATE: 12/31/05