

CORNER FILE TRACKING

H:\Survey\Corners\Misc\Filetrac2.doc
06/15/2003

CORNER NUMBER
147200540

STEP	HISTORY()	RESTORATION()
Form Prepared, DB	3/3/08	6/1/08
Field Inspection, DB	5/30/08	5/30/08
Form Checked, DB	6/16/08	6/16/08
Form Edited, DB	6/17/08	6/17/08
Form Signed, DB	6/17/08	6/17/08
Counter Index	5/30/08	5/30/08
GIS Index	6/3/08	6/3/08
Authorize Payment, DB	_____	_____
Archive Digital Files	6/18/08	6/18/08
Collect Documents	6/18/08	6/18/08
Scanned	6/19/08	6/19/08
Copy For Filming	6/18/08	6/18/08
Filed, DB		
Finish index (count unit)	5/30/08	5/30/08
Filmed (Archived), DB		
Document No's to Andrew		

(DB) = Entry needed in database (Access).

COMMENTS:

147200540

DATE 03/03/2008TOWNSHIP 14 SOUTH, RANGE 07 WEST, WILLAMETTE MERIDIAN; SECTION 07 CORNER EAST 1/4
DONATION LAND CLAIM N/A CORNER N/ACOMMON CORNER(S)

WEST 1/4 OF SECTION 8

RECORDS (INFORMATION IN BOLD ITALICS IS COUNTY STAFFS' INTERPRETATION OF THE RECORD)

BASED ON EXTENSIVE RESEARCH AND RECOVERY OF EVIDENCE, THIS OFFICE HAS DETERMINED THAT MOST GENERAL LAND OFFICE SURVEYORS MEASURED TO THE FACE OF BEARING TREES

- [01] GENERAL LAND OFFICE (GLO) NOTES BY DENNIS HATHORN, D S , DATED 1856 *SET A POST. MARKED A 50" FIR N20°E 100 LKS (66 00 FT) AND A 50" FIR N15°W 270 LKS. (178.20 FT.).*
- [02] CORNER RESTORATION CORRESPONDENCE FILE FOR 14-7 BY BURT UDELL, P E , DATED JUNE 14, 1954 *FOUND A FIR STUB FOR THE 50" FIR (GLO BT) N20°E 66.00 FT., INTERIOR GONE FROM FIRE, BUT OBVIOUS SCAR ON OUTSIDE OF EXTERIOR SHELL. FOUND THE ROTTEN REMAINS OF A 50" FIR (GLO BT) N15°W 178.20 FT., DISTANCES AND BEARINGS CHECK WELL. MARKED A 15" FIR N41°E 53.5 FT. AND A 15" FIR S75°W 101.00 FT*
- [03] CORNER RESTORATION NO 3240 *TRANSCRIBED FROM RECORD [02] AND MAY CONTAIN ERRORS AND/OR OMISSIONS.*
- [04] CORNER RESTORATION NO 2530 *TRANSCRIBED FROM RECORD [02] AND MAY CONTAIN ERRORS AND/OR OMISSIONS.*
- [05] COUNTY SURVEY NO 9942 BY N WOOD AND R SMITH (BLM), DATED FEBRUARY 1972 *SET A 3/4" PIPE. FOUND A 60" BROKEN SNAG (GLO BT) N20°E 66 00 FT. AND A ROTTEN 50" FIR STUMP (GLO BT) N15°W 178.20 FT. SET A LOCATION TAG ON AN 8" FIR S07°W 3.80 FT.*
- [06] COUNTY SURVEY NO 7275 BY GARY JOHNSTON, P L S , DATED MARCH 23, 1981 *FOUND A 1" IRON PIPE. FOUND A 12" D. FIR (BLM BT) WITH YELLOW BLM TAG S07°W 3.60 FT., NO MARKS. MARKED THE ABOVE BLM BT WITH SCRIBING "1/4S7BT". MARKED A 12" D. FIR N32°E 10 40 FT., MARKED "1/4S8BT"*
- [07] COUNTY RESTORATION NO 2537 *TRANSCRIBED FROM RECORD [06] AND MAY CONTAIN ERRORS AND/OR OMISSIONS.*
- [08] COUNTY SURVEY NO 8827 BY NORM SPRINGER, P L S , DATED APRIL 19, 1994 *FOUND A 1" IRON PIPE.*

NOTES

THIS IS A MICROSOFT WORD 2003 DOCUMENT NAMED "47200540" CREATED FROM A BOILER PLATE DOCUMENT NAMED "HISTORY", WHICH HAS A STYLESHEET NAMED "CORNER" ATTACHED TO IT

FIRM/AGENCY. BENTON COUNTY SURVEYOR'S OFFICE
ADDRESS. 360 S W AVERY AVE CORVALLIS OR 97333, PH 766-6821
RESEARCH BY: BERNARD S ALTENBACH, ENGINEER/SURVEY TECH
DATA ENTRY BY: SAME

BENTON COUNTY CORNER RESTORATION FORM, PAGE 1 OF 2, 147200540R1

SEE CORNER HISTORY FORM FOR RECORDS ETC.

CORNER RESTORATION FIELD BOOK NUMBER 26 PAGE(S) 58 DATE 05/30/2008
TOWNSHIP 14 SOUTH, RANGE 7 WEST, WILLAMETTE MERIDIAN; SECTION 7 CORNER EAST 1/4
DONATION LAND CLAIM NONE CORNER NONE
CONDITION REPORT _____ REFERENCED OUT _____; RENEWED XX, SURVEYED IN _____

LOCATION AND COMMENTS.

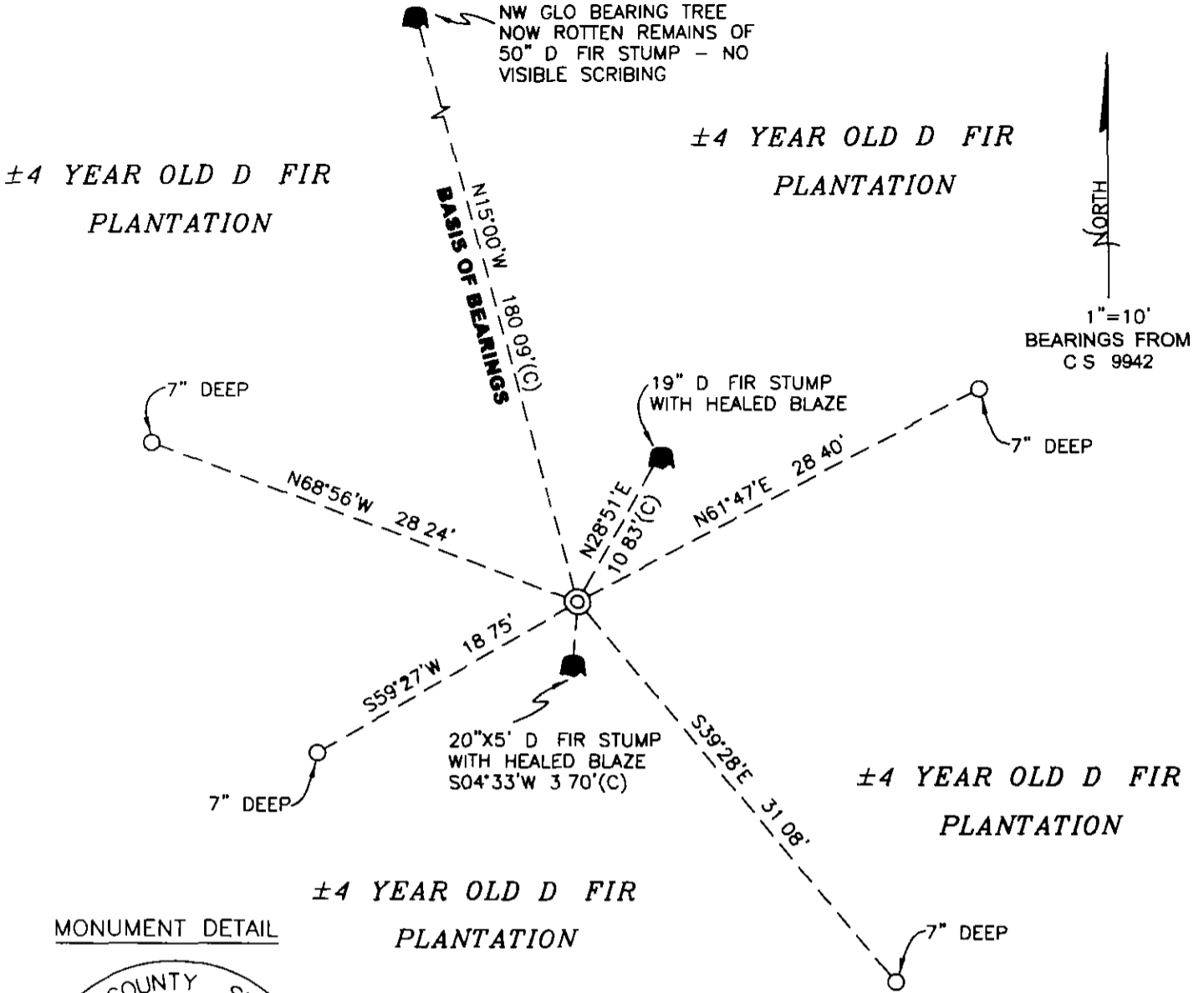
CORNER IS LOCATED ON A NORTHERLY FACING SLOPE IN A ±4 YEAR OLD D FIR PLANTATION TO REACH CORNER FROM THE JUNCTION OF SOUTH FORK ROAD AND SOUTH MOUNTAIN ROAD, TRAVEL EASTERLY ON SOUTH MOUNTAIN ROAD FOR 0 03 MILES, THEN BEAR LEFT AT 3 WAY JUNCTION FOR 0 74 MILES, THEN BEAR RIGHT STAYING ON MAIN GRAVEL ROAD FOR 0 08 MILES, THEN BEAR RIGHT ON MIDDLE FORK OF THREE WAY JUNCTION FOR 0 08 MILES, THEN WALK ±80 FEET SOUTH TO CORNER CORNER IS GOOD FOR PREMARKING AND GPS CONTROL FOR A FEW MORE YEARS

MONUMENTS AND ACCESSORIES FOUND (CONDITION AND SOURCE)

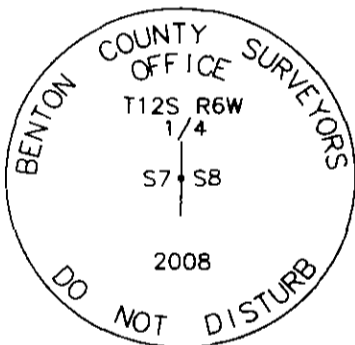
- 1 FOUND 3/4" X 36" GALVANIZED IRON PIPE, 5" ABOVE GROUND LEVEL AND FIRMLY SET FOR CORNER POSITION
(SET 3/4" PIPE FROM REMAINS OF GLO BEARING TREES PER RECORD [05])
(FOUND 1" IRON PIPE PER RECORDS [06] AND [08])
- 2 FOUND REMAINS OF NORTHWEST GLO BEARING TREE, N15°00'W, 180 09 FEET TO APPROXIMATE CENTER OF REMAINS OF ±50" D FIR STUMP WITH NO VISIBLE MARKS REMAINING **BASIS OF BEARINGS FOR THIS RESTORATION.**
(MARKED 50" FIR, N15°W, 178 20 FEET PER RECORD [01])
(FOUND ROTTEN REMAINS OF 50" D FIR, N15°W, 178 20 FEET PER RECORDS [02] AND [05])
- 3 FOUND 19" D FIR STUMP WITH HEALED BLAZE, N28°51'E, 10 83 FEET TO CENTER SET ALUMINUM NAIL AND PLASTIC WASHER IN TOP CENTER FOR DISTANCE AND ANGLE MEASUREMENTS
(MARKED 12" D FIR, N32°E, 10 40 FEET PER RECORD [06])
- 4 FOUND 20" X 5' HIGH D FIR STUMP WITH HEALED DOUBLE BLAZE, S4°33'W, 3 70 FEET TO CENTER SET ALUMINUM NAIL AND PLASTIC WASHER IN EASTERLY BASE FOR DISTANCE MEASUREMENT
(SET LOCATION TAG ON 8" FIR, S07°W, 3 80 FEET PER RECORD [05])
(FOUND 12" D FIR WITH BLM TAG, S07°W, 3 60 FEET WITH NO MARKS MARKED SAID 12" D FIR WITH SCRIBING "1/4S7BT" PER RECORD [06])

MONUMENT SET (PROCEDURES AND DESCRIPTION):

HELD THE 3/4" X 36" GALVANIZED IRON PIPE FOR THE TRUE CORNER POSITION REMOVED IRON PIPE AND SET A 2" X 31 1/2" GALVANIZED IRON PIPE WITH A 3 1/4" ALUMINUM DISK CONCRETED IN THE TOP, 2" BELOW GROUND LEVEL AND MARKED AS SHOWN ON PAGE 2 OF 2 BURIED THE 3/4" X 36" GALVANIZED IRON PIPE ON THE NORTHERLY SIDE OF NEW MONUMENT IN A HORIZONTAL POSITION AND 3" BELOW GROUND LEVEL SET A 6 FOOT ORANGE CARSONITE "SURVEY MARKER" POST 0 5 FEET SOUTH OF NEW MONUMENT



MONUMENT DETAIL



3 1/4" ALUMINUM DISK

LEGEND

- SET 5/8" X 30" REBAR WITH YELLOW PLASTIC CAP MKD "BENTON COUNTY SURVEYOR"
- (C) MEASUREMENT TO CENTER
- ⊙ GOVERNMENT MONUMENT SET AS SHOWN
- GLO GENERAL LAND OFFICE
- BEARING TREE STUMP AS NOTED

NEW ACCESSORIES

- 1 SET REBAR (SEE LEGEND) 7" BELOW GROUND LEVEL N61°47'E, 28 40 FEET
- 2 SET REBAR (SEE LEGEND) 7" BELOW GROUND LEVEL S39°28'E, 31 08 FEET
- 3 SET REBAR (SEE LEGEND) 7" BELOW GROUND LEVEL S59°27'W, 18 75 FEET
- 4 SET REBAR (SEE LEGEND) 7" BELOW GROUND LEVEL N68°56'W, 28 24 FEET

NOTES

COMPASS DECLINATION IS 20° EAST ALL MEASURED DISTANCES AND BEARINGS ARE TO THE CENTER OF THE OBJECT, UNLESS OTHERWISE NOTED ALL BEARING TREES ARE PAINTED AND HAVE A BT TAG ATTACHED, FACING THE CORNER UNLESS OTHERWISE NOTED ALL NEW BEARING TREES HAVE A PLASTIC WASHER (STAMPED "SURVEYOR MARKER DO NOT REMOVE") ATTACHED BY AN ALUMINUM NAIL TO THE FACE, BELOW THE "BT" FOR DISTANCE AND ANGLE MEASUREMENT UNLESS OTHERWISE NOTED THE DRAWING IS FROM AUTOCAD RELEASE 2008

THIS RESTORATION WAS PERFORMED AT THE DIRECTION AND APPROVAL OF THE BENTON COUNTY SURVEYOR DM

REGISTERED PROFESSIONAL LAND SURVEYOR

6/17/08 *David M. Dean*

FIRM/AGENCY BENTON COUNTY SURVEYOR'S OFFICE
 EQUIPMENT 360 SW AVERY AVE CORVALLIS, OR 97333, PH 766-6821
 ADDRESS DAVID M DEAN, PLS AND BERNIE ALTENBACH, SURVEY TECH
 PRESENT LEICA TCR 1105 WITH TDS ON BOARD

OREGON
 JULY 13, 1984
 DAVID M DEAN
 2090

RENEWAL DATE: 12/31/09



RT. 3 BOX 8

RES. PH. 36F11

LEBANON, OREGON

June 14, 1954

Mr. Curtiss Hansen
Benton County Engineer
Corvallis, Oregon

Dear Sir:

We have had occasion to locate the following corners and find them as indicated:

Sec. 8, T 14 S, R 7 W

NW Sec. Cor.

The 48" fir BT N 4 W is now stump chopped out to scribe.

SEE COR. REST. No.
2539 (CPL 7/23/90)

N $\frac{1}{4}$ cor.

Found pipe and both BTs per CS 128.

W $\frac{1}{4}$ cor.

Found Fir stub for 50" fir N 20 E, 66.0 ft., interior gone from fire, but obvious scar on outside of exterior shell.

Also rotted remains of 50" fir N 15 W 178.2 ft.

Distances and bearings check very well.

I re-witnessed by scribing new BTs:

15" fir N 41 E 53.9 ft.

15" fir S 75 W 101.0 ft.

Sec. 36, T 14 S, R 8 W

NE sec. cor.

Found stone mound and one original scribed cedar in NE quad, down but scribe well preserved.

I believe Bruce Starker re-witnessed this lately as new BTs have been scribed with a tool that cuts $\frac{1}{2}$ " or so wide and as deep. Bruce's "S" is on one of the trees with the same scribe tool. Please check your records to be sure the new BTs are recorded.

SEE COR. REST. No.
2626 (CPL 7/23/90)

E $\frac{1}{4}$

Found old stone with "CS" in edge of creek and approximate correct bearing and distance from a fir snag with scribe, but I doubt whether this is original snag or stone for creek ties and chain distance South from NE corner do not check well.

SE corner

Found brass cap and government re-survey BTs in good condition.

Sincerely yours,

Howard E. Taylor
Howard E. Taylor

BENTON COUNTY SURVEYORS OFFICE - CORNER RESTORATION

2530

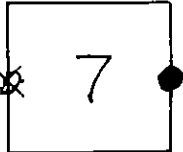
T 14 S, R. 7 W, W B & M, BENTON COUNTY, OREGON

SECTION 7

REPORTED BY BERT UDELL

TITLE REG PROF ENGR

DATE JUNE 14, 1954



● OFFICIAL CORNER FOUND

○ CORNER SET

44 CORNER COMMON TO SEC 7 & 8

IS _____ DESCRIBE _____

ADDITIONAL INFORMATION

LEGIBLE MARKS ON BEARING OBJECTS

KIND	<u>FIR</u>	<u>FIR</u>	
SIZE	<u>15"</u>	<u>15"</u>	
BEARING	<u>N41°E</u>	<u>S75°W</u>	
DISTANCE	<u>533 FT</u>	<u>1010 FT</u>	
BT TAG POSTED			

OVER

E 1/4 Corner to Section 7, Twp. 14 S., R. 7 W

By Howard Taylor

June 14, 1954 ³²⁴⁰

E 1/4 Corner -- Found Fir stub for 50" Fir N 20E, 66.0 ft., interior gone from fire, but obvious scar on outside of exterior shell. Also rotted remains of 50" Fir N 15 W 178.2 ft. Distances and bearings check very well. Rewitnessed by scribing new BTS 15" Fir N 41 E 53.5 ft and 15" Fir S 75 W 101.0 ft

BENTON COUNTY SURVEYORS OFFICE - CORNER RESTORATION

9537

T 14 S, R 7 W, B & M, BENTON COUNTY, OREGON

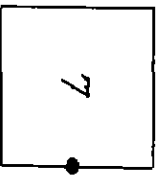
SECTION 7

The information shown hereon was taken from the referenced county survey. Date 2/28/90

REPORTED BY Gary T. Johnston

TITLE PLS 1967

DATE March 23, 1987



OFFICIAL CORNER FOUND
CORNER SET

1/4 CORNER COMMON TO SEC 7, 8
IS 1" iron pipe from 1972 survey

ADDITIONAL INFORMATION

Set 6' Fiberglass post 10 West of P
corner

Refer to C.S. # 2225

OVER

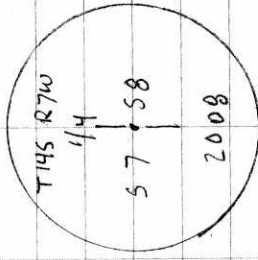
LEGIBLE MARKS ON BEARING OBJECTS

BLM Y Tag	W.N.I.		
New BT's	X. Tag		
KIND	Douglas Fir	Douglas Fir	
SIZE	12"	12"	
BEARING	S07°W	N32°E	
DISTANCE	36 ft	10 ft	
BT TAG POSTED	✓	✓	

147200540

REMNUMENTING 1/4 7/8 T145 R7W

Fd. 3/4" x 3/8" 6" I.P. 6" ABOVE GROUND
 LEVEL FOR COR. POSITION PER CS 9942
 Fd NW GLO BT - NOW ROTTEN REMAINS
 OF ± 50" D. FIR NO VS. Fd 20" x 5" D. FIR
 STAMP W/ DBL HEALED BLAZE (57W, 3.60')
 Fd 19" D. FIR STUMP W/ HEALED BLAZE
 (N32°E, 10.4')
 REMOVED 3/4" I.P. AND SET 2" x 3 1/2" G.I.P.
 W/ 3/4" ALUM DISK CONC. IN TOP 2" ↓
 AND MKD AS SHOWN. BURIED 3/4" I.P.
 ON N SIDE NEW MON. IN NORZ POSITION
 4" x SET 6' ORANGE CARBONITE "SURVEY
 MARKER" POST 0.5 S OF NEW MON.

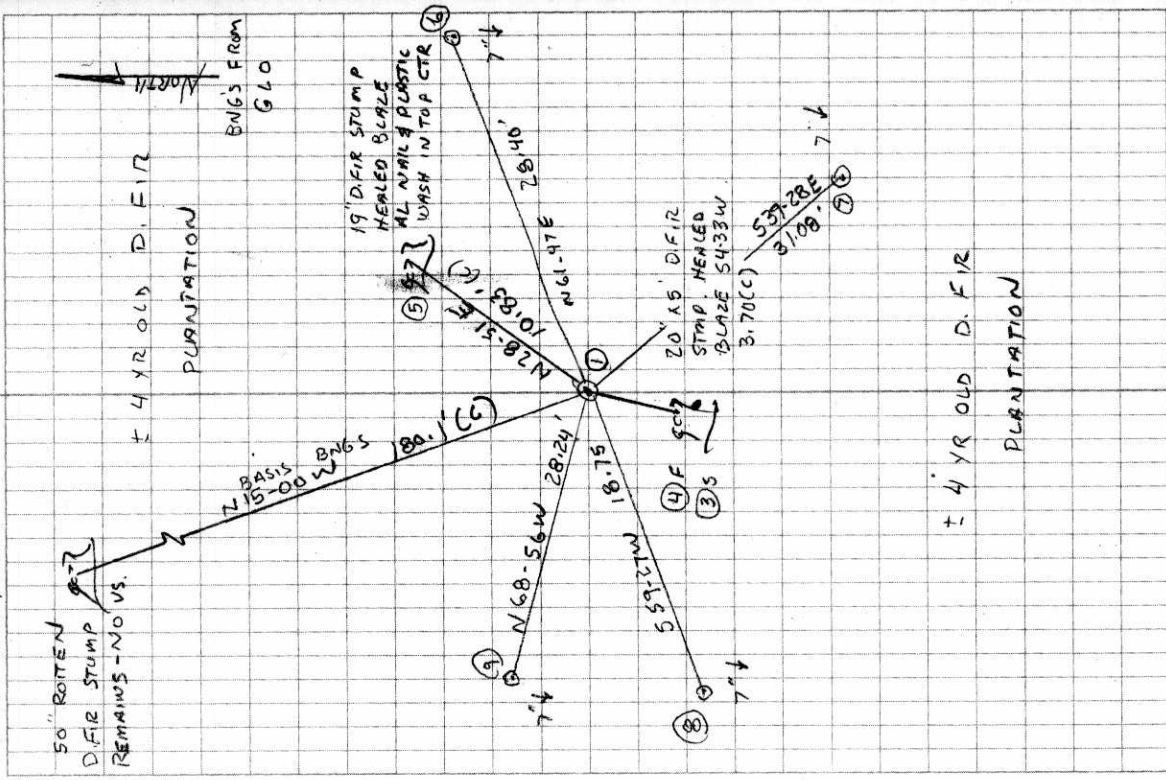


3/4" ALUM. DISK

5/30/08
 D. DEAN
 B. ALTENBACH

CUDY, MILD
 56°F, 29.7" Hg
 LEICA TCR 1105/TDS

26/58



BENTON COUNTY SURVEYORS OFFICE - CORNER RESTORATION

2530

T. 14 S, R. 7 W, W. B. & M., BENTON COUNTY, OREGON

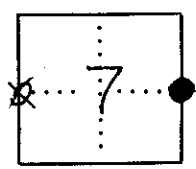
REPORTED BY BERT UDELL

SECTION 7

TITLE REG. PROF. ENGR.

147200540

DATE JUNE 14, 1954



- OFFICIAL CORNER FOUND
- CORNER SET

44 CORNER COMMON TO SEC. 7 & 8

IS _____ DESCRIBE

ADDITIONAL INFORMATION

OVER

LEGIBLE MARKS ON BEARING OBJECTS

KIND	<u>FIR</u>	<u>FIR</u>	
SIZE	<u>15"</u>	<u>15"</u>	
BEARING	<u>N41°E</u>	<u>S75°W</u>	
DISTANCE	<u>533 FT.</u>	<u>101.0 FT.</u>	
BT TAG POSTED			

BENTON COUNTY SURVEYORS OFFICE - CORNER RESTORATION

2537

T. 14 S, R. 7 W, W. B. & M., BENTON COUNTY, OREGON

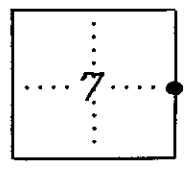
REPORTED BY Gary T. Johnston

SECTION 7

TITLE RPLS 1967

The information shown hereon was taken from the referenced county survey. Date: 2/22/92

DATE March 23, 1981



- OFFICIAL CORNER FOUND
- CORNER SET

1/4 CORNER COMMON TO SEC. 7 & 8

IS 1" iron pipe from 1972 Survey DESCRIBE

ADDITIONAL INFORMATION

Set 6' Fiberglass Post 1' west of corner

Refer to C.S. # 7275

OVER

LEGIBLE MARKS ON BEARING OBJECTS
New BT's

	<u>BLM Y. Tag</u>	<u>W.I.I.</u>	
		<u>Y. Tag</u>	
KIND	<u>Douglas Fir</u>	<u>Douglas Fir</u>	
SIZE	<u>12"</u>	<u>12"</u>	
BEARING	<u>S07°W</u>	<u>N32°E</u>	
DISTANCE	<u>36 FT.</u>	<u>10.4 FT.</u>	
BT TAG POSTED	<u>✓</u>	<u>✓</u>	

E 1/4 Corner to Section 7, Twp. 14 S., R. 7 W

3240

By Howard Taylor

June 14, 1954

E 1/4 Corner -- Found Fir stub for 50" Fir N 20E, 66.0 ft., interior gone from fire, but obvious scar on outside of exterior shell. Also rotted remains of 50" Fir N 15 W 178.2 ft. Distances and bearings check very well. Rewitnessed by scribing new BTS: 15" Fir N 41 E 53.5 ft and 15" Fir S 75 W 101.0 ft.

147200540