

**147240500**

## CORNER FILE TRACKING

S:\Survey Corners\CORNERS\Templates\Filetrac2.doc  
10/04/2010

<b>CORNER NUMBER</b>
<b>147240500</b>

STEP	HISTORY	RESTORATION
Form Prepared, DB	5/5/21	5/27/21
Field Inspection, DB	5/26/21	5/26/21
Finish index (count unit)	5/5/21	5/26/21
Counter Index	5/26/21	5/26/21
GIS Index Form	5/26/21	5/26/21
Checked, DB	5/27/21	5/27/21
Form Edited, DB	6/7/21	6/7/21
Form Signed, DB	6/7/21	6/7/21
Authorize Payment, DB	—	—
Archive Digital Files	6/7/21	6/7/21
Collect Documents	6/7/21	6/7/21
PDF File	6/7/21	6/7/21
Copy For Filming	6/7/21	6/7/21
Scanned (pdf to laserfiche)	6/7/21	6/7/21
Filmed (Archived), DB		
Filed, DB		

(DB) = Entry needed in database (Access).

### COMMENTS:

DATE 05/05/2021TOWNSHIP 14 SOUTH, RANGE 7 WEST, WILLAMETTE MERIDIAN; SECTION 8 CORNER SOUTH 1/4  
DONATION LAND CLAIM N/A CORNER N/A**COMMON CORNER(S):**

NORTH 1/4 CORNER SECTION 17

**RECORDS (INFORMATION IN *BOLD ITALICS* IS COUNTY STAFFS' INTERPRETATION OF THE RECORD)**

BASED ON EXTENSIVE RESEARCH AND RECOVERY OF EVIDENCE, THIS OFFICE HAS DETERMINED THAT MOST GENERAL LAND OFFICE SURVEYORS IN BENTON COUNTY BEFORE 1890 MEASURED TO THE FACE OF BEARING TREES.

- [01] GENERAL LAND OFFICE (GLO) NOTES BY DENNIS HATHORN, D.S., DATED DECEMBER 5, 1856. *SET POST FROM WHICH A MAPLE 12" DIA BEARS N63°W, 40 LINKS (26.40 FEET); A DOGWOOD 12" DIA BEARS S8°E, 29 LINKS (19.14 FEET).*
- [02] BENTON COUNTY SURVEY NO. 6802 BY GARY T. JOHNSTON, P.L.S., DATED OCTOBER, 1978. *SET 5/8" X 30" IRON ROD AND 6' FIBERGLASS POST 1.0' SOUTH. HEMLOCK 40" DIA BEARS N18°W, 26.7 FEET MARKED "1/4 S8 BT"; HEMLOCK 10" DIA BEARS S10°W, 28.8 FEET MARKED "1/4 S17 BT". SET AT MIDPOINT BETWEEN SECTION CORNERS.*
- [03] BENTON COUNTY CORNER RESTORATION NO. 2542. *TRANSCRIBED FROM RECORD [02] AND MAY CONTAIN ERRORS AND/OR OMISSIONS.*
- [04] BENTON COUNTY SURVEY NO. 8827 BY NORMAN D. SPRINGER, P.L.S., DATED APRIL 19, 1994. *FOUND 5/8" IRON ROD.*
- [05] BENTON COUNTY SURVEY NO. 10960 BY KENT RYAN INMAN, P.L.S., DATED SEPTEMBER 29, 2018. *FOUND 5/8" IRON ROD, UP 10". FOUND DECAYING HEMLOCK STUMP BEARS N18°W, 26.7 FEET TO FACE, 28.0 FEET TO SIDE CENTER. FOUND HEMLOCK 22" DIA WITH A HEALED FACE BEARS S10°W, 28.8 FEET TO FACE, 29.3 FEET TO SIDE CENTER. D. FIR STUMP 21" DIA, 7' TALL, BEARS N39°E, 21.9 FEET. REMOVED BARK AND SCRIBED "1/4 S8 BT" IN CHOPPED FACE. D. FIR 49" DIA BEARS S32°E, 55.1 FEET TO SIDE CENTER, SCRIBED "1/4 S17 BT". ALDER 17" DIA BEARS N59°W, 53.6 FEET, BARK SCRIBED "1/4 S8 BT".*

**FIRM/AGENCY:** BENTON COUNTY SURVEYOR'S OFFICE  
**ADDRESS:** 360 S.W. AVERY AVE., CORVALLIS, OR 97333; PH. 541-766-6821  
**RESEARCH BY:** DAVID L. MALONE, P.L.S.  
**DATA ENTRY BY:** SAME

**BENTON COUNTY CORNER RESTORATION FORM, PAGE 1 OF 2, 147240500R1****SEE CORNER HISTORY FORM FOR RECORDS ETC.**

CORNER RESTORATION FIELD BOOK NUMBER 33 PAGE(S) 66-67 DATE 05/26/2021  
TOWNSHIP 14 SOUTH, RANGE 7 WEST, WILLAMETTE MERIDIAN; SECTION 8 CORNER SOUTH 1/4  
DONATION LAND CLAIM N/A CORNER N/A  
CONDITION REPORT    ; REFERENCED OUT    ; RENEWED X; SURVEYED IN    

**LOCATION AND COMMENTS:**

LOCATED ON A SMALL RIDGELINE RUNNING NORTH ON A MODERATE NORTH-NORTHEAST FACING SLOPE, WITH A VERY STEEP SLOPE ABOUT 20 FEET WEST, IN AN AREA OF MIXED AGE AND MIXED TYPE TREES TO THE WEST AND SOUTH AND A CLEARCUT TO THE NORTHEAST. TO REACH CORNER FROM THE INTERSECTION OF HIGHWAY 34 AND HONEYGROVE ROAD, TRAVEL EASTERLY ON HONEYGROVE ROAD FOR 0.70 MILES TO BLM ROAD 14-7-5.1 ON THE RIGHT. TURN RIGHT ONTO BLM ROAD 14-7-5.1 FOR 0.15 MILES TO A WYE, STAY LEFT FOR 0.03 MILES TO A WYE, STAY LEFT FOR 0.06 MILES TO A WYE, STAY RIGHT FOR 0.25 MILES TO A WYE, STAY RIGHT FOR 0.21 MILES TO A WYE, STAY RIGHT FOR 0.13 MILES TO A WYE, TURN LEFT ON BLM ROAD 14-7-5.4 FOR 0.53 MILES TO A WYE, STAY RIGHT FOR 0.25 MILES TO A WYE, STAY RIGHT FOR 0.20 MILES TO A WYE, STAY RIGHT FOR 0.06 MILES TO A WYE, STAY LEFT FOR 0.15 MILES TO A WYE, GO RIGHT FOR 0.19 MILES TO A WYE, STAY LEFT FOR 0.06 MILES TO A WYE, STAY RIGHT FOR 0.22 MILES AND PARK. WALK SOUTHWEST ABOUT 500 FEET TO THE CORNER. CORNER IS BAD FOR PREMARKING AND GPS CONTROL.

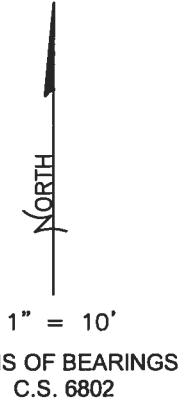
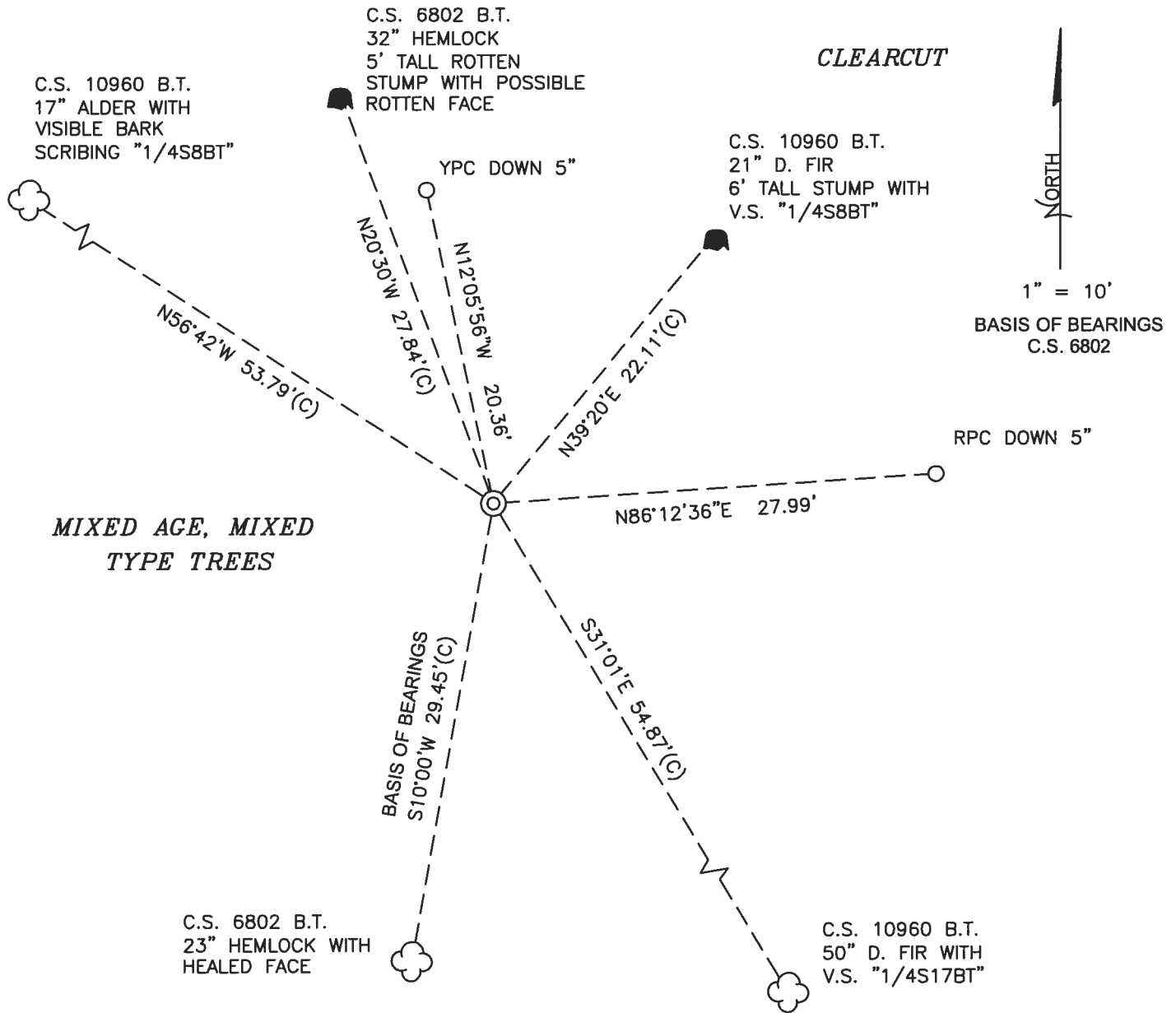
**MONUMENTS AND ACCESSORIES FOUND (CONDITION AND SOURCE):**

1. FOUND 5/8" IRON ROD, FIRMLY SET, UP 10" ABOVE GROUND SURFACE, FOR THE CORNER.  
(SET POST AS PER RECORD [01]).  
(SET 5/8" X 30" IRON ROD AT MIDPOINT BETWEEN SECTION CORNERS AS PER RECORD [02]).  
(FOUND 5/8" IRON ROD AS PER RECORD [04]).  
(FOUND 5/8" IRON ROD, UP 10" AS PER RECORD [05]).
2. FOUND HEMLOCK 23" DIA WITH HEALED FACE BEARS S10°00'W, 29.45 FEET TO CENTER. **BASIS OF BEARINGS FOR THIS RESTORATION.** SET ALUMINUM NAIL AND PLASTIC WASHER IN WESTERLY BASE FOR DISTANCE MEASUREMENT.  
(HEMLOCK 10" DIA BEARS S10°W, 28.8 FEET, MARKED "1/4 S17 BT" AS PER RECORD [02]).  
(FOUND HEMLOCK 22" DIA WITH A HEALED FACE BEARS S10°W, 28.8 FEET TO FACE, 29.3 FEET TO SIDE CENTER AS PER RECORD [05]).
3. FOUND 5 FOOT TALL ROTTEN HEMLOCK STUMP 32" DIA BEARS N20°30'W, 27.84 FEET TO CENTER, WITH POSSIBLE ROTTEN FACE.  
(HEMLOCK 40" DIA BEARS N18°W, 26.7 FEET, MARKED "1/4 S8 BT" AS PER RECORD [02]).  
(FOUND DECAYING HEMLOCK STUMP BEARS N18°W, 26.7 FEET TO FACE, 28.0 FEET TO SIDE CENTER AS PER RECORD [05]).
4. FOUND 6 FOOT TALL D. FIR STUMP 21" DIA BEARS N39°20'E, 22.11 FEET TO CENTER, WITH BARK REMOVED AND VISIBLE SCRIBING "1/4S8BT".  
(D. FIR STUMP, 7' TALL, BEARS N39°E, 21.9 FEET. REMOVED BARK AND SCRIBED "1/4 S8 BT" IN CHOPPED FACE AS PER RECORD [05]).
5. FOUND D. FIR 50" DIA BEARS S31°01'E, 54.87 FEET TO CENTER, WITH VISIBLE SCRIBING "1/4S17BT". SET ALUMINUM NAIL AND PLASTIC WASHER IN NORTHEASTERLY BASE FOR DISTANCE MEASUREMENT.  
(D. FIR 49" DIA BEARS S32°E, 55.1 FEET TO SIDE CENTER, SCRIBED "1/4 S17 BT" AS PER RECORD [05]).
6. FOUND ALDER 17" DIA BEARS N56°42'W, 53.79 FEET TO CENTER, WITH VISIBLE BARK SCRIBING "1/4S8BT". SET ALUMINUM NAIL AND PLASTIC WASHER IN SOUTHWESTERLY BASE FOR DISTANCE MEASUREMENT.  
(ALDER 17" DIA BEARS N59°W, 53.6 FEET, BARK SCRIBED "1/4 S8 BT" AS PER RECORD [05]).

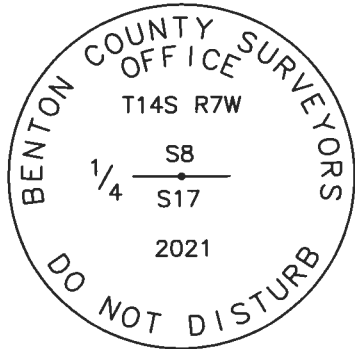
**MONUMENT SET (PROCEDURES AND DESCRIPTION):**

FOUND 5/8" IRON ROD, FIRMLY SET, UP 10" ABOVE GROUND SURFACE, FOR THE CORNER. THE IRON ROD WAS SET IN 1978 BY GARY T. JOHNSTON, P.L.S., AT MIDPOINT BETWEEN THE SECTION LINES. NO ORIGINAL GENERAL LAND OFFICE (GLO) EVIDENCE WAS FOUND. JOHNSTON USED THE PROPER PROCEDURE TO REESTABLISH THE CORNER POSITION, AND SUBSEQUENT SURVEYS HAVE FOUND THE IRON ROD TO BE SET WITHIN THE TOLERANCES OF THE TIME PERIOD. THE IRON ROD HAS BEEN ACCEPTED BY PREVIOUS SURVEYORS AND USED TO SUBDIVIDE SECTION 8 AND TO CONTROL TIMBER CUTTING LINES. THE IRON ROD IS ACCEPTED AS THE REESTABLISHMENT OF THE CORNER POSITION.

DROVE THE 5/8" IRON ROD DOWN BELOW GROUND SURFACE AND IN THE SAME HORIZONTAL POSITION SET A 2" X 31-1/2" GALVANIZED IRON PIPE WITH 3-1/4" BRASS DISK MARKED AS SHOWN ON PAGE 2 OF 2 CEMENTED IN THE TOP, UP 4" ABOVE GROUND SURFACE. FOUND WHITE FIBERGLASS POST 1 FOOT SOUTH OF BRASS DISK. SET TWO NEW IRON ROD ACCESSORIES AS SHOWN ON PAGE 2 OF 2. SET 6 FOOT ORANGE CARSONITE "SURVEY MARKER" POST 1 FOOT NORTH OF BRASS DISK.



MONUMENT DETAIL



3-1/4" BRASS DISK

**MIXED AGE, MIXED TYPE TREES**

LEGEND

- SET 5/8" X 30" REBAR WITH PLASTIC CAP
- YPC YELLOW PLASTIC CAP MARKED "BENTON COUNTY SURVEYOR"
- RPC RED PLASTIC CAP MARKED "BENTON COUNTY SURVEYOR"
- (C) MEASUREMENT TO CENTER
- ⊙ GOVERNMENT MONUMENT SET AS SHOWN
- V.S. VISIBLE SCRIBING
- C.S. COUNTY SURVEY
- B.T. BEARING TREE
- 🌳 BEARING TREE STUMP AS NOTED
- ☁ BEARING TREE AS NOTED

**NEW ACCESSORIES:**

1. SET REBAR (SEE LEGEND) N86°12'36"E, 27.99 FEET AND 5 INCHES BELOW GROUND LEVEL.
2. SET REBAR (SEE LEGEND) N12°05'56"W, 20.36 FEET AND 5 INCHES BELOW GROUND LEVEL.

**NOTES:**

COMPASS DECLINATION IS 15° EAST. ALL MEASURED DISTANCES AND BEARINGS ARE TO THE CENTER OF THE OBJECT, UNLESS OTHERWISE NOTED. ALL BEARING TREES ARE PAINTED AND HAVE A B.T. TAG ATTACHED, FACING THE CORNER UNLESS OTHERWISE NOTED. ALL NEW BEARING TREES HAVE A PLASTIC WASHER (STAMPED "SURVEY MARKER DO NOT REMOVE") ATTACHED BY AN ALUMINUM NAIL TO THE SIDE CENTER OF THE TREE FOR DISTANCE MEASUREMENT, UNLESS OTHERWISE NOTED.

THIS RESTORATION WAS PERFORMED AT THE DIRECTION AND APPROVAL OF THE BENTON COUNTY SURVEYOR *[Signature]*

REGISTERED  
PROFESSIONAL  
LAND SURVEYOR

FIRM/AGENCY: BENTON COUNTY SURVEYOR'S OFFICE  
ADDRESS: 360 S.W. AVERY AVE., CORVALLIS, OR 97333; PH. 541-766-6821  
PRESENT: DAVID L. MALONE, P.L.S., AND BERNARD ALTENBACH, SURVEY TECH.  
EQUIPMENT: NIKON NIVO3.C WITH SURVEY PRO ONBOARD.

*6/10/21 D.L.M.*

OREGON  
JANUARY 12, 1999  
DAVID L. MALONE  
51523

RENEWAL DATE: 12/31/22

147246500

REMOVEMENT THIS RTW 1/4 3/17

FD 5/8" DR UP 10" ABOVE GROUND SURFACE FINALLY  
 SET FOR THE CENTER, FD WHITE FIBERGLASS POIT 1' SOUTH.  
 FD NW HOMLOCK BT STUMP AND SW HOMLOCK BT PER  
 CS602. FD NW ANTON ST, SE FIR BT & NE FIR  
 BT STUMP PER CS1060. DRIVE 5/8" DR DOWN  
 AND IN SAME HORIZONTAL POSITION SET 2" x 31-1/2"  
 G.I.P. w/ 2-1/4" BRASS DISK CENTERED IN THE TOP.  
 UP 4" ABOVE GROUND SURFACE, HOLD SW HOMLOCK BT  
 FOR BASIS OF ISMARI-45 SET TWO NEW RAN (2)  
 ACCESSORIES SET 6' ABOVE CARLWITE "SURVIV MARKER"  
 POIT 1" WITH 1" BRASS DISK

DR = 5/8" x 30" BRASS ROD

YPC OR RPC = YELLOW OR RED

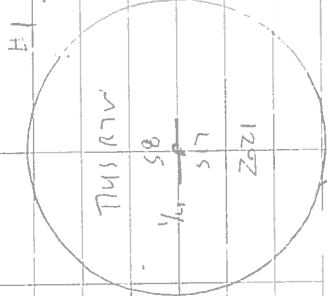
PLASTIC CAP MARKED

"BENTON CURTY SURVEYOR"

NE PW = NAIL & PLASTIC WASH ER

MARKED "SURVEY MARKER"

DO NOT REMOVE



3-1/4 BRASS DISK

VISION CLEAR

5/26/21

MILAN VIVO 3 IN  
 SURVEY PROGNOSTIC

CS602 BT

32" HOMLOCK  
 5" PLASTIC FIBERGLASS  
 PROXIMATE BOTTOM FACE

MIXED ACID  
 MOUNTING  
 PROTECT

DRIVE  
 DOWN

17" BRASS  
 W/ V.S. MARKER  
 "H588"

CS1060 BT  
 1" BRASS  
 W/ V.S. MARKER  
 "H588"

510-000 BT  
 5" PLASTIC FIBERGLASS  
 PROXIMATE BOTTOM FACE

BASIS OF SURVEY  
 CS 1060 BT

CS1060 BT  
 2" HOMLOCK  
 W/ HEADED FACE

MIXED ACID  
 MOUNTING  
 PROTECT

TABLES

CS1060 BT

CS1060 BT  
 2" HOMLOCK  
 W/ V.S. MARKER

DRIVE  
 DOWN

17" BRASS  
 W/ V.S. MARKER  
 "H588"

CS1060 BT  
 1" BRASS  
 W/ V.S. MARKER  
 "H588"

531-016 54-85 (CC)

CS1060 BT  
 50" x FIR  
 W/ V.S.  
 W/ 1/4 START

CS1060 BT  
 2" HOMLOCK  
 W/ HEADED FACE

TABLES

Return to the Rain

CS1060 BT

CS1060 BT  
 2" HOMLOCK  
 W/ V.S. MARKER

DRIVE  
 DOWN

17" BRASS  
 W/ V.S. MARKER  
 "H588"

CS1060 BT  
 1" BRASS  
 W/ V.S. MARKER  
 "H588"

531-016 54-85 (CC)

CS1060 BT  
 50" x FIR  
 W/ V.S.  
 W/ 1/4 START

CS1060 BT  
 2" HOMLOCK  
 W/ HEADED FACE

TABLES

Return to the Rain

CS1060 BT

CS1060 BT  
 2" HOMLOCK  
 W/ V.S. MARKER

DRIVE  
 DOWN

17" BRASS  
 W/ V.S. MARKER  
 "H588"

CS1060 BT  
 1" BRASS  
 W/ V.S. MARKER  
 "H588"

531-016 54-85 (CC)

CS1060 BT  
 50" x FIR  
 W/ V.S.  
 W/ 1/4 START

CS1060 BT  
 2" HOMLOCK  
 W/ HEADED FACE

TABLES

Return to the Rain

BENTON COUNTY SURVEYORS OFFICE - CORNER RESTORATION

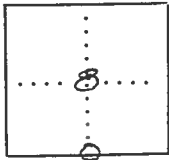
2542

T. 14 S, R. 7 W, W. B. & M., BENTON COUNTY, OREGON

SECTION 8

The information shown hereon was taken from  
the referenced county survey. Date: 7/30/90

REPORTED BY Gary T. Johnston  
TITLE Surveyor (1967)  
DATE Oct. 1978



● OFFICIAL CORNER FOUND

○ CORNER SET

1/4 CORNER COMMON TO SEC. 17 & 8  
IS 5/8" x 30" Iron Rod  
DESCRIBE

ADDITIONAL INFORMATION

6' Fiberglass Post, 1.0" South  
See CS# 6802

OVER

LEGIBLE MARKS ON BEARING OBJECTS

	<u>1/4 S 8 BT</u>	<u>1/4 S 17</u>		
		<u>BT</u>		
	<u>W.I.I.Y.</u>	<u>W.I.I.Y.</u>		
KIND	<u>Hem</u>	<u>Hem</u>		
SIZE	<u>40"</u>	<u>10"</u>		
BEARING	<u>N 18° W</u>	<u>S 10° W</u>		
DISTANCE	<u>26.7'</u>	<u>28.8'</u>		
BT TAG POSTED				