

## CORNER FILE TRACKING

H:\Survey\Corners\Misc\Filetrac.doc

11/23/98

<b>CORNER NUMBER</b>
<b>147240700</b>

STEP	HISTORY()	RESTORATION()
Form Prepared, DB	1/7/03	1/23/03
Field Inspection, DB	1/6/03	1/6/03
Form Checked, DB	1/26/03	1/26/03
Form Edited, DB	1/27/03	1/27/03
Form Signed, DB	1/28/03	1/28/03
Authorize Payment, DB	—	—
Archive Digital Files		
Collect Documents	1/29/03*	1/29/03
Scanned	1/29/03	1/29/03
Copy For Filming		
Filed, DB		
Finish index (count unit)		
Filmed (Archived), DB		

(DB) = Entry needed in database (Access).

### COMMENTS:

DATE 01/07/2003TOWNSHIP 14 SOUTH, RANGE 07 WEST, WILLAMETTE MERIDIAN; SECTION 05 CORNER N 1/4  
DONATION LAND CLAIM N/A CORNER N/A**COMMON CORNER(S):**

NONE

**RECORDS (INFORMATION IN *BOLD ITALICS* IS COUNTY STAFFS' INTERPRETATION OF THE RECORD)**

BASED ON EXTENSIVE RESEARCH AND RECOVERY OF EVIDENCE, THIS OFFICE HAS DETERMINED THAT MOST GENERAL LAND OFFICE SURVEYORS MEASURED TO THE FACE OF BEARING TREES.

- [01] GENERAL LAND OFFICE (GLO) NOTES BY DENNIS HATHORN, D.S., DATED SEPTEMBER 10, 1856. *SET POST WITH A 30" FIR S18°E 214 LKS. (141.24 FT.) AND AN 8" FIR S 35°W 153 LKS. (100.98 FT.)*
- [02] COUNTY SURVEY NO. 576 (OLD NO. 128) FIELD NOTES (FIELD BOOK NO. 22 PAGE 34) BY W. C. GALLOWAY, C.S., DATED JANUARY 17, 1917. *SET 5/8" X 21" I. ROD FROM A FIR STUMP (GLO BEARING TREE) S18°E 2.14 CHS. (141.24 FT.). MARKED A 30" FIR S47°E .475 CHS. (31.35 FT.) AND AN 8" FIR S64°10'W .588 CHS. (38.81 FT.)*
- [03] CORNER RESTORATION BOOK NO. 1, PAGE 118 BY W. C. GALLOWAY, C.S., DATED JANUARY 17, 1917. *SIMILAR INFORMATION AS RECORD [02].*
- [04] CORNER RESTORATION NO. 2513. *TRANSCRIBED FROM RECORD [03] AND MAY CONTAIN ERRORS AND/OR OMISSIONS.*
- [05] BENTON COUNTY MAP NO 14-7-0002 BY W. C. GALLOWAY, C.S., DATED OCTOBER 1916. *5/8" I. PIN.*
- [06] BENTON COUNTY MAP NO 14-7-0001 PLATTED BY W. C. GALLOWAY, C.S., DATED JANUARY 23, 1917. *5/8" X 21" I. ROD WITH A 30" FIR (C.S.B.T.) S47°E .475 CHS (31.35 FT.) AND AN 8" FIR (C.S.B.T.) S64°10'W .588 CHS. (38.81 FT.).*
- [07] COUNTY SURVEY NO. 9351 BY NORMAN SPRINGER, P.L.S., DATED APRIL 8, 1998. *FOUND 5/8" IRON ROD.*

**NOTES:**

THIS IS A MICROSOFT WORD 2000 DOCUMENT NAMED "147240700" CREATED FROM A BOILER PLATE DOCUMENT NAMED "HISTORY", WHICH HAS A STYLESHEET NAMED "CORNER" ATTACHED TO IT.

**FIRM/AGENCY:** BENTON COUNTY SURVEYOR'S OFFICE  
**ADDRESS:** 360 S.W. AVERY AVE. CORVALLIS OR 97333; PH. 766-6821  
**RESEARCH BY:** BERNARD S. ALTENBACH ENGINEER AND SURVEY TECH.  
**DATA ENTRY BY:** ALTENBACH

**SEE CORNER HISTORY FORM FOR RECORDS ETC.**

CORNER RESTORATION FIELD BOOK NUMBER 21 PAGE(S) 4 DATE 01/06/2003  
TOWNSHIP 14 SOUTH, RANGE 7 WEST, WILLAMETTE MERIDIAN; SECTION 5 CORNER NORTH 1/4  
DONATION LAND CLAIM NONE CORNER NONE  
CONDITION REPORT     ; REFERENCED OUT     ; RENEWED XX; SURVEYED IN     

**LOCATION AND COMMENTS:**

CORNER IS LOCATED IN A ± 80 YEAR OLD STAND OF DOUGLAS FIR ON A GENTLE SOUTHERLY SLOPE. TO REACH CORNER FROM THE JUNCTION OF HIGHWAY 34 AND HONEY GROVE ROAD (C.R. NO. 47403), TRAVEL EASTERLY ON HONEY GROVE ROAD FOR ??? MILES AND PARK AT A JUNCTION OF A LOGGING SUPR ROAD ON THE LEFT (NORTH). FOLLOW SUPR ROAD TO NORTH AND WEST FOR ± 850 FEET TO A SMALL DRAW; THEN NORTH UP DRAW FOR 150 FEET TO CORNER. CORNER IS POOR FOR PREMARKING AND GPS CONTROL.

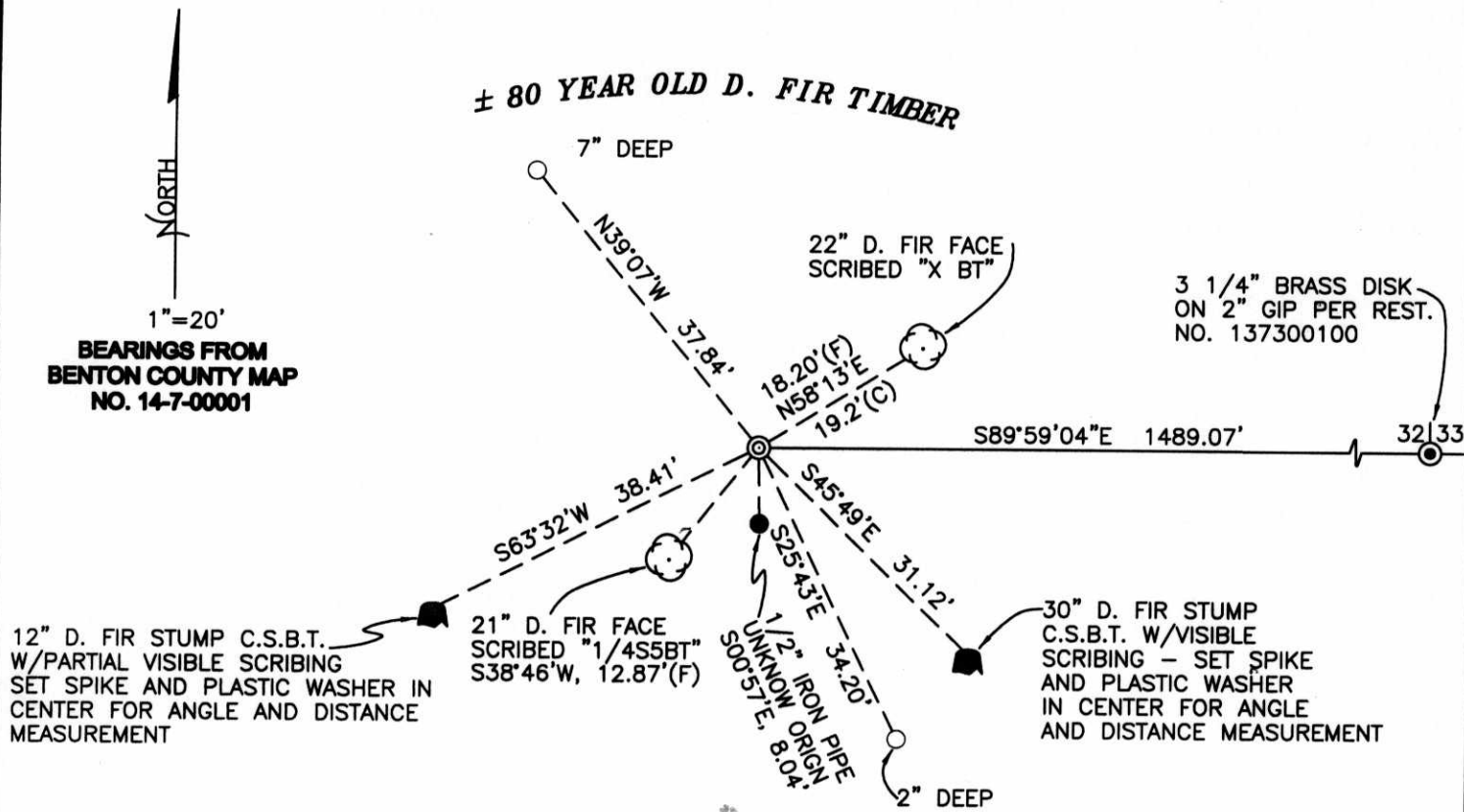
**MONUMENTS AND ACCESSORIES FOUND (CONDITION AND SOURCE):**

1. FOUND 5/8" SMOOTH IRON ROD, 1" BELOW GROUND LEVEL FOR CORNER POSITION.  
(SET 5/8" X 21" IRON ROD FROM GLO FIR STUMP PER RECORDS [02] AND [03]).  
(5/8" IRON PIN PER RECORD [05]).  
(5/8" X 21" IRON ROD PER RECORD [06]).  
(FOUND 5/8" IRON ROD PER RECORD [07]).
2. FOUND 30" D. FIR STUMP WITH VISIBLE SCRIBING "S 128", S45°49'E, 31.12 FEET TO CENTER. SET SPIKE AND PLASTIC WASHER IN CENTER OF STUMP FOR DISTANCE AND ANGLE MEASUREMENT.  
(MARKED A 30" FIR, S47°E, 31.35 FEET PER RECORDS [02] AND [03]).  
(30" FIR S47°E, 31.35 FEET PER RECORD [06]).
3. FOUND 12" ROTTEN STUMP WITH PARTIAL VISIBLE SCRIBING ON REMAINING SLAB AND VISIBLE SCRIBING ON 3 PIECES OF ORIGINAL FACE IN DEBRIS AROUND STUMP, S63°32'W, 38.41 FEET TO CENTER. SET SPIKE AND PLASTIC WASHER IN CENTER OF STUMP FOR ANGLE AND DISTANCE MEASUREMENT.  
(MARKED 8" FIR, S64°10'W, 38.81 FEET PER RECORDS [02] AND [03]).  
(8" FIR S64°10'W, 38.81 FEET PER RECORD [06]).
4. FOUND 1/2" IRON PIPE FLUSH WITH GROUND LEVEL OF UNKNOWN ORIGIN, S0°57'E, 8.04 FEET.
5. FOUND 3 1/4" BRASS DISK ON 2" GALVANIZED IRON PIPE AT THE SECTION CORNER COMMON TO SECTIONS 32 AND 33, T13S, R7W, PER RESTORATION NO. 137300100, S89°59'04"W, 1489.07 FEET.  
(N89°52'E, 1486.06 FEET [TO STONE] PER RECORDS [05] AND [06]).

**MONUMENT SET (PROCEDURES AND DESCRIPTION):**

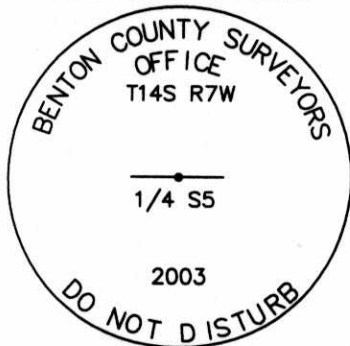
NO EVIDENCE OF THE GLO MONUMENT OR ACCESSORIES REMAIN. WE HELD THE 5/8" IRON ROD AS SET BY W. C. GALLOWAY FOR THE TRUE CORNER POSITION.

SET A 2" X 36" GALVANIZED IRON PIPE OVER SAID 5/8" IRON ROD AND CONCRETED A 3 1/4" BRASS DISK IN THE TOP, 4" ABOVE GROUND LEVEL, MARKED AS SHOWN ON PAGE 2 OF 2. SET A 6 FOOT ORANGE CARSONITE SURVEY MARKER POST 1 FOOT SOUTH OF NEW MONUMENT AND REFERENCED AS SHOWN.



**± 80 YEAR OLD D. FIR TIMBER**

**MONUMENT DETAIL**



**3 1/4" BRASS DISK**

**LEGEND**

- SET 5/8" X 30" REBAR WITH YELLOW PLASTIC CAP MKD "BENTON COUNTY SURVEYOR"
- FOUND MONUMENT AS NOTED
- (F) MEASUREMENT TO FACE
- ⊙ GOVERNMENT MONUMENT SET AS SHOWN
- ⊙ GOVERNMENT MONUMENT FOUND AS SHOWN
- ⊙ BEARING TREE AS NOTED
- G.I.P. GALVANIZED IRON PIPE
- C.S.B.T. COUNTY SURVEYOR'S BEARING TREE
- REST. BENTON COUNTY RESTORATION NUMBER

**NEW ACCESSORIES:**

1. SET REBAR (SEE LEGEND) 7" BELOW GROUND LEVEL, N39°07'W, 37.84 FEET.
2. SET REBAR (SEE LEGEND) 2" BELOW GROUND LEVEL, S25°43'E, 34.20 FEET.
3. FACE SCRIBED A 22" D. FIR "X BT", N58°13'E, 18.20 FEET TO FACE (19.2 FEET TO CENTER).
4. FACE SCRIBED A 21" D. FIR "1/4S5BT", S38°46'W, 12.87 FEET TO FACE (13.8 FEET TO CENTER).

**NOTES:**

COMPASS DECLINATION IS 20° EAST. ALL MEASURED DISTANCES AND BEARINGS ARE TO THE CENTER OF THE OBJECT, UNLESS OTHERWISE NOTED. ALL BEARING TREES ARE PAINTED AND HAVE A B.T. TAG ATTACHED, FACING THE CORNER UNLESS OTHERWISE NOTED. ALL NEW BEARING TREES HAVE A PLASTIC WASHER (STAMPED "BENTON COUNTY SURVEYOR CORNER RESTORATION") ATTACHED (BY ALUMINUM NAIL) TO THE FACE, BELOW THE "BT" FOR DISTANCE AND ANGLE MEASUREMENT UNLESS OTHERWISE NOTED. THE DRAWING IS FROM AUTOCAD RELEASE 2002.

THIS RESTORATION WAS PERFORMED AT THE DIRECTION AND APROVAL OF THE BENTON COUNTY SURVEYOR, RW

**FIRM/AGENCY:** BENTON COUNTY SURVEYOR'S OFFICE  
**ADDRESS:** 360 S.W. AVERY AVE. CORVALLIS OR 97333; PH. 766-6821  
**PRESENT:** DAVID M. DEAN, P.L.S.

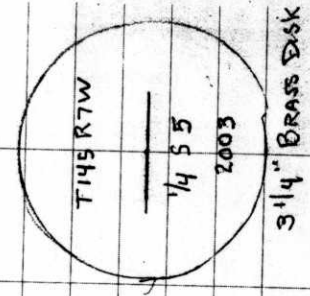
REGISTERED PROFESSIONAL LAND SURVEYOR

*David M. Dean* 1-28-03

OREGON  
JULY 13, 1984  
DAVID M. DEAN  
2090

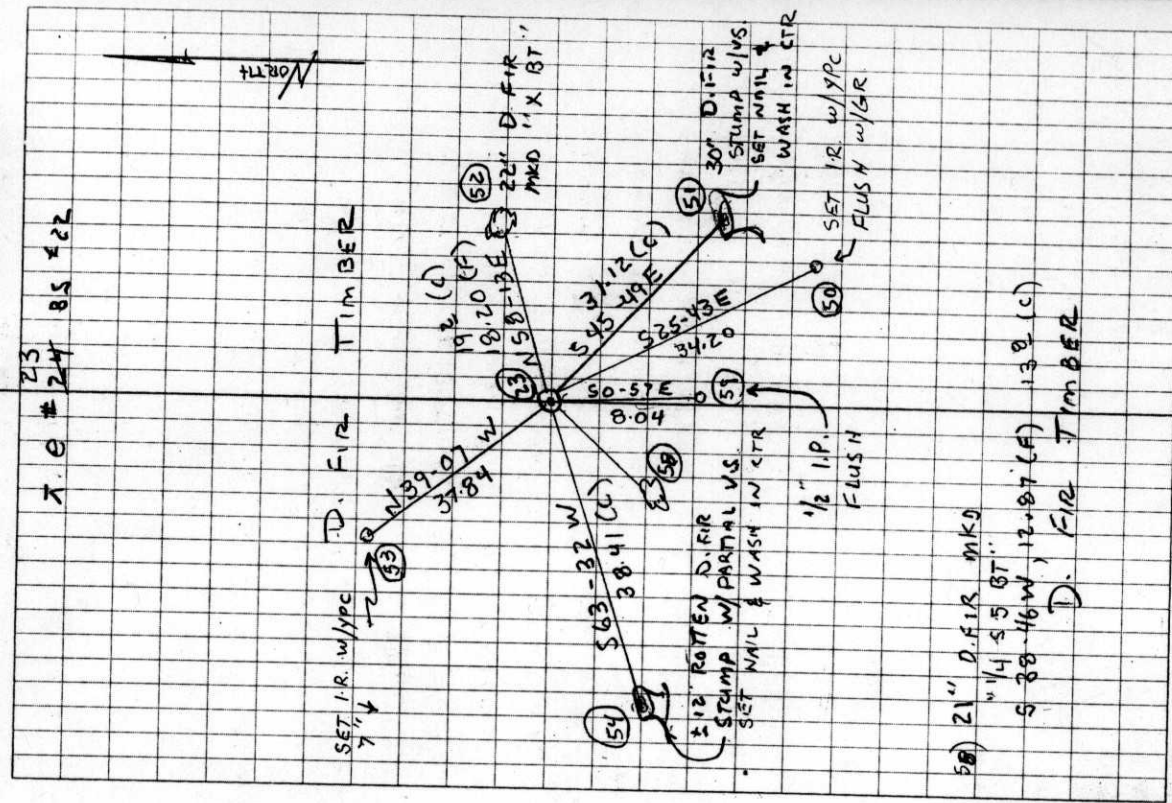
RENEWAL DATE: 12/31/03

147 240700  
 REMONUMENTING N 1/4 SEC 5 T 14S R7W  
 3RD STANDARD PARALLEL SOUTH  
 Fd 5/8" SMOOTH IRON ROD 1" BELOW  
 GROUND LEVEL PER RECORD [D2]  
 Fd 30" D. FIR STUMP - OPENED TO V.S.  
 'S 128" PER REC [D2] Fd ROTTEN  
 REMAINS OF RECORD [D2] SW BT  
 W/PARTIAL SCRIBING, NO EVIDENCE  
 OF GIO ACCESSORIES OR MONUMENT.  
 Fd 1/2" I.P. 50.57E, 8.04' of unknown  
 ORIGIN, HEED 5/8" I.R. FOR COR.  
 POSITION. SET 2" x 36" G.I.P.A. W/3/4"  
 BRASS DISK CONCRETED IN TOP 4" ABOVE  
 GR. LEVEL, MKD AS SHOWN, SET 6'  
 CARSONITE SURVEY MARKER POST  
 1/2" SOUTH OF NEW MON. REFERENCED  
 AS SHOWN.



1/6/03  
 D. DEAN  
 G. ALTENBACH

CLEAR, MILD  
 ± 50°F 30.0" Hg  
 LEICA TCR 1105



X. E # 23  
 247 85 x 22

50) 21" D. FIR MKD  
 1/4 5 5 BT  
 5 88-46W, 12+87 (F) 13.8 (C)  
 D. FIR TIMBER

C.S. #255  
continued

S.E. corner of Eli Summers D.L.C. # 67 T. 11 S. R. 6 W.

Set 1" X 24" I pin Point of oak stake found in hole

Oak 4" in dia. bears S 16° 20' W. .141 chs.

" 5" " " " N. 41° 40' W. .101 "

" 30" " " " N. 72° 50' E. .84 " stump std.

" 24" " " " S. 56° 50' W. .08 " " "

" 14" " " " N. 41° 40' W. 1.00 " " "

Witnesses A.C. Johnson, C.E. Jackson &amp; J.E. Mc Donough Nov. 17, 1916.

C.S. #128  
continued.Sec. Cor. bet. secs. 32 & 33 on 3<sup>rd</sup> Std. parallel T. 13 S. R 7 W.Set Sand stone 6" X 8" X 9" . has 4 notches. Had turned over <sup>position</sup> out of  
Cedar N. 75° E. 43 chs. lying down.

Mkd. cedar 10" in dia. bears S. 75° E. .484 chs.

Maple 12" " " " N. 40° W. .69 " std.

Witness Geo. T. Sebrell. Jan. 17, 1917.

"

1/4 sec. cor. on north of sec. 5 T. 14 S. R 7 W.

Set 3/8" X 21" iron rod Fir stump 30" S. 18° E. 214 chs.

Fir 30" in dia. bears S. 47° E. .475 chs.

" 8" " " " S. 64° 10' W. .588 "

Witness Geo. T. Sebrell Jan 17, 1917.

"

1/4 sec. cor. bet. secs. 5 &amp; 8 T. 14 S. R 7 W.

Set 3/4" X 30" pipe

Fir 12" in dia. bears N. 10° E. .21 chs. std.

" 24" " " " S. 81° 30' E. .48 " "

Witnesses Geo. T. &amp; Bonj. Sebrell Jan 19, 1917.

"

1/4 sec. cor. bet. secs. 5 &amp; 6 T. 14 S. R 7 W.

Set 3/4" pipe 30" long Vine maple bunch N.E., Dogwood N. 80° W. 62

W. fir 54" in dia. bears. S. 33° E. 1.122 chs. blazed trees

R. " 44" " " " S. 75° 30' W. .777 " N. + S.

Witness Geo. T. Sebrell Jan. 22, 1917.

S.W. corner of D.D. Stroud's Cl. # 44 T. 11 S. R 4 W.

Granit stone set good position for both fences.

S.E. corner of J.V. Lewis D.L.C. # 45 T. 11 S. R 4 W.

1" pipe already set

Most West N.W. cor. of W<sup>m</sup> Taylor D.L.C. # 46 T. 11 S. R 4 W.

3/4" pipe set on line from S.W. cor. of Cl. # 45 to S.E. cor. of Cl. # 45.

C.S. #22

By Burt W

C.S. #22

By Burt Wilk

C.S. #22

By Burt W

"

"

✓ CORNER COMMON TO SEC. 4 5 52 & 53  
 is iron post 28 in long, 2 1/2" diam, 24" in grad. w/ brass cap  
 DESCRIBE

ADDITIONAL INFORMATION

Fir, 35"-565°E, 53 lks. w/ heated blaze  
 Fir stump, 40"-510°W, 80 lks w/ heated blaze  
 ↑ (Collier 1856) ↑ ↑  
 Fir, 15"-532°W, 20.5 lks, w/ scribe mks on open blaze  
 ↑ ↑ (Martin BLS # 363-1967) ↑ ↑

SEE PG. 1 OF THE BLM FIELD NOTES IN THE T14S  
 R7W FILE IN THE CORNER RESTORATION CORRES-  
 PONDENCE FILE DRAWER (CJL 7/23/90)

OVER

1195			
R7W			
SS			
SC			
BT			(4)
KIND	Fir		
SIZE	10"		
BEARING	S70°W		
DISTANCE	37 lks.		
BT TAG POSTED			

1/4-Section corner on north of Section 5, Twp. 14 S. R. 7 W.

**2513**

Reestablishment by W. C. Galloway

January 17, 1917

Set 5/8" x 21" iron rod, Fir stump 30" in diam bears S 18° E. 2.14 chains.  
 Fir 30" in diam bears S 47° E .475 chains  
 Fir 8" in diam bears S 64° 10' W .588 chains  
 Witness George T. Sebrell

1/4-Section corner between sections 5 and 8, Twp. 14 S., R. 7 W.

**2514**

Reestablishment by W. C. Galloway

January 19, 1917

Set 3/4" x 30" pipe  
 Fir 12" in diam bears N 10° E .21 chains (standing)  
 Fir 24" in diam bears S 81° 30' E .48 chains (standing)  
 Witnesses George T and Benjamin Sebrell

Leo Martin

Fd 52" Fir (Wind Fall) N 53° E 10.8'

Fd 46" Fir

Set 3/4"x3' I.P.

(Set from one original tree which one not stated)

2-12-64