

147300600

CORNER FILE TRACKING

S:\Survey Corners\CORNERS\Templates\Filetrac2.doc
10/04/2010

CORNER NUMBER
147300600

STEP	HISTORY	RESTORATION
Form Prepared, DB	10/20/10	5/13/21
Field Inspection, DB	5/5/21	5/5/21
Finish index (count unit)	10/20/10	5/5/21
Counter Index	5/5/21	5/5/21
GIS Index Form	5/5/21	5/5/21
Checked, DB	5/13/21	5/13/21
Form Edited, DB	5/17/21	5/17/21
Form Signed, DB	5/17/21	5/17/21
Authorize Payment, DB	—	—
Archive Digital Files	5/17/21	5/17/21
Collect Documents	5/17/21	5/17/21
PDF File	5/17/21	5/17/21
Copy For Filming	5/17/21	5/17/21
Scanned (pdf to laserfiche)	5/17/21	5/17/21
Filmed (Archived), DB		
Filed, DB		

(DB) = Entry needed in database (Access).

COMMENTS:

DATE 10/20/2016TOWNSHIP 14 SOUTH, RANGE 7 WEST, WILLAMETTE MERIDIAN; SECTION 4 CORNER SOUTHWEST
DONATION LAND CLAIM N/A CORNER N/A**COMMON CORNER(S):**SOUTHEAST CORNER SECTION 5
NORTHEAST CORNER SECTION 8
NORTHWEST CORNER SECTION 9**RECORDS (INFORMATION IN *BOLD ITALICS* IS COUNTY STAFFS' INTERPRETATION OF THE RECORD)**

BASED ON EXTENSIVE RESEARCH AND RECOVERY OF EVIDENCE, THIS OFFICE HAS DETERMINED THAT MOST GENERAL LAND OFFICE SURVEYORS IN BENTON COUNTY MEASURED TO THE FACE OF BEARING TREES.

- [01] GENERAL LAND OFFICE (GLO) NOTES BY DENNIS HATHORN, D.S., DATED DECEMBER 5, 1856. *SET POST FROM WHICH A MAPLE 24" DIA BEARS N3°W, 12 LINKS (7.92 FEET); A FIR 12" DIA BEARS N23°E, 32 LINKS (21.12 FEET); A FIR 18" DIA BEARS S25°W, 47 LINKS (31.02 FEET); A CEDAR 12" DIA BEARS S65°E, 47 LINKS (31.02 FEET).*
- [02] GENERAL LAND OFFICE (GLO) NOTES BY CHARLES M. COLLIER, D.S., DATED MAY 12, 1893. *FIND THE REMAINS OF ORIGINAL POST AND SET NEW POST 4 FEET LONG, 4" SQUARE, 24" IN GROUND MARKED "T14S S4" ON NORTHEAST FACE, "R7W S9" ON SOUTHEAST FACE, "S8" ON SOUTHWEST FACE, AND "S5" ON NORTHWEST FACE WITH 4 NOTCHES ON EAST EDGE AND 5 NOTCHES ON SOUTH EDGE, FROM WHICH A MAPLE 24" DIA (GLO BT) BEARS N3°W, 12 LINKS (7.92 FEET), MARKED "T14S R7W S5 BT"; A FIR 12" DIA (GLO BT) BEARS N23°E, 32 LINKS (21.12 FEET), MARKED "T14S R7W S4 BT"; A FIR 18" DIA (GLO BT) BEARS S25°W, 47 LINKS (31.02 FEET), MARKED "T14S R7W S8 BT"; A CEDAR 12" DIA (GLO BT) BEARS S65°E, 47 LINKS (31.02 FEET), MARKED "T14S R7W S9 BT".*
- [03] BENTON COUNTY SURVEY NO. 296 (OLD NO. 128) FIELD NOTES (FIELD BOOK 12, PAGE 5) BY W. C. GALLOWAY, C.S., DATED MARCH 19, 1912. *ORIGINAL CORNER. SET A WAGON STANDARD. W. FIR 12" DIA (GLO BT) BEARS N29°E, 0.32 CHAINS (21.12 FEET), SNAG STANDING; MAPLE 9" DIA BEARS S31°40'E, 0.992 CHAINS (65.47 FEET); FIR 18" DIA (GLO BT) BEARS S25°W, 0.47 CHAINS (31.02 FEET), STANDING; MAPLE 24" DIA (GLO BT) BEARS N3°W, 0.12 CHAINS (7.92 FEET), STANDING.*
- [04] BENTON COUNTY CORNER RESTORATION BOOK NO. 1, PAGE 33, BY W. C. GALLOWAY, C.S., DATED MARCH 19, 1912. *SET WAGON STANDARD WITH IRON. ORIGINAL CORNER. W. FIR 12" DIA (GLO BT) BEARS N29°E, 0.32 CHAINS (21.12 FEET), SNAG STANDING; MAPLE 8" DIA (CSBT) BEARS S31°40'E, 0.992 CHAINS (65.47 FEET); FIR 18" DIA (GLO BT) BEARS S25°W, 0.47 CHAINS (31.02 FEET), STANDING; MAPLE 24" DIA (GLO BT) BEARS N3°W, 0.12 CHAINS (7.92 FEET), STANDING.*
- [05] BENTON COUNTY CORNER RESTORATION NO. 2503. *TRANSCRIBED FROM RECORD [04] AND MAY CONTAIN ERRORS AND/OR OMISSIONS.*
- [06] BENTON COUNTY MAP NO. 14-7-00002 BY W. C. GALLOWAY, C.S., DATED OCTOBER 21, 1916. *WAGON STANDARD.*
- [07] BENTON COUNTY MAP NO. 14-7-00001 BY W. C. GALLOWAY, C.S., DATED JANUARY 23, 1917. *WAGON STANDARD. W. FIR 12" DIA (GLO BT) BEARS N29°E, 0.32 CHAINS (21.12 FEET); MAPLE 9" DIA (CSBT) BEARS S31°40'E, 0.992 CHAINS (65.47 FEET); FIR 18" DIA (GLO BT) BEARS S25°W, 0.47 CHAINS (31.02 FEET), STANDING; MAPLE 24" DIA (GLO BT) BEARS N3°W, 0.12 CHAINS (7.92 FEET), STANDING.*
- [08] BENTON COUNTY SURVEY NO. 1280 (OLD NO. 128) FIELD NOTES (FIELD BOOK 86, PAGE 1) BY W. C. GALLOWAY, C.S., DATED MAY 31, 1936. *CORNER SET. IRON IN PLACE. TREES STANDING.*
- [09] BUREAU OF LAND MANAGEMENT (BLM) CORNER CARD BY LEO J. MARTIN, FORESTER, DATED FEBRUARY 12, 1964. *MAPLE 42" DIA (GLO BT) BEARS N3°W, 12 LINKS (7.92 FEET), HEALED FACE; D. FIR 62" DIA (GLO BT) BEARS S25°W, 47 LINKS (31.02 FEET), HEALED FACE; STUMP HOLE RECORD BEARING AND DISTANCE; MAPLE SPROUT ON OLD STUMP RECORD BEARING AND DISTANCE. DROVE 3/4" X 3' GALVANIZED IRON PIPE AND ATTACHED "BLM APPROX. COR. PT. #118" IN SLIT IN PIPE. PIPE WAS SET BY INTERSECTION OF LINES FROM ORIGINAL BEARING TREES.*
- [10] BENTON COUNTY CORNER RESTORATION NO. 2503. *TRANSCRIBED FROM RECORD [09] AND MAY CONTAIN ERRORS AND/OR OMISSIONS.*
- [11] BENTON COUNTY CORNER RESTORATION NO. 2508. *TRANSCRIBED FROM RECORD [09] AND MAY CONTAIN ERRORS AND/OR OMISSIONS.*
- [12] BUREAU OF LAND MANAGEMENT (BLM) NOTES BY LARRY D. EVANS, CADASTRAL SURVEYOR, DATED MARCH 23, 1977. *THE CORNER PERPETUATED BY LEO J. MARTIN, P.L.S., IN 1964, MONUMENTED WITH AN IRON PIPE, 1" DIA, FIRMLY SET, PROJECTING 6" ABOVE GROUND, FROM WHICH A FIR STUMP 62" DIA (GLO BT) BEARS S25°W, 47 LINKS (31.02 FEET), WITH HEALED BLAZE; A MAPLE 43" DIA (GLO BT) BEARS N3°W, 12 LINKS (7.92 FEET), WITH HEALED BLAZE. AT THE CORNER POINT SET AN IRON POST 28" LONG, 2-1/2" DIA, 24" IN THE GROUND, WITH BRASS CAP MARKED "T14S R7W S5 S4 S8 S9 1976" FROM WHICH A FIR 25" DIA BEARS N26-1/4°E, 116 LINKS (76.56 FEET), MARKED "T14S R7W S4 BT"; A FIR 32" DIA BEARS N84°E, 155 LINKS (102.30 FEET), MARKED "X BT". RESET IRON PIPE ALONGSIDE IRON POST.*
- [13] BENTON COUNTY CORNER RESTORATION NO. 2509. *TRANSCRIBED FROM RECORD [12] AND MAY CONTAIN ERRORS AND/OR OMISSIONS.*
- [14] BENTON COUNTY SURVEY NO. 6667 BY GARY T. JOHNSTON, P.L.S., DATED JUNE, 1978. *FOUND BRASS CAP.*
- [15] BENTON COUNTY SURVEY NO. 9296 BY NORMAN D. SPRINGER, P.L.S., DATED APRIL 8, 1998. *FOUND 3-1/4" BLM BRASS CAP ON 2-1/2" IRON PIPE. CAP IS MARKED "T14S R7W S5 S4 S8 S9 1976".*

DATE 10/20/2016

- [16] BENTON COUNTY SURVEY NO. 9351 BY NORMAN D. SPRINGER, P.L.S., DATED AUGUST 28, 1998. FOUND 3-1/4" BLM BRASS CAP ON 2-1/2" IRON PIPE. CAP IS MARKED "T14S R7W S5 S4 S8 S9 1976". FOUND FIR STUMP 62" DIA (GLO BT) BEARS S25°W, 31.0 FEET, HEALED FACE; ROTTED MAPLE STUMP (GLO BT) BEARS N3°E, 7.9 FEET, NO MARKS; FIR STUMP 25" DIA (BLM BT) BEARS N26-1/2°E, 76.6 FEET, HEALED FACE; FIR STUMP 32" DIA (BLM BT) BEARS N84°E, 102.3 FEET, HEALED FACE. FIR 12" DIA BEARS S53°E, 10.3 FEET, SCRIBED "T14S R7W S9 BT"; CEDAR 4" DIA BEARS S78°W, 27.6 FEET, SCRIBED "X BT"; FIR 15" DIA BEARS N61°W, 32.9 FEET, SCRIBED "T14S R7W S5 BT"; MAPLE 8" DIA BEARS N70°E, 25.8 FEET, SCRIBED "T14S R7W S4 BT".
- [17] BUREAU OF LAND MANAGEMENT (BLM) PLAT BY ROYCE W. HILL, CADASTRAL SURVEYOR, DATED MARCH 27, 2008. THE CORNER MONUMENTED WITH AN IRON POST, 2-1/2" DIA, FIRMLY SET, PROJECTING 4" ABOVE GROUND, (ALONGSIDE OF WHICH IS AN IRON PIPE, 1" DIA, FIRMLY SET, PROJECTING 6" ABOVE GROUND), WITH BRASS CAP MARKED AS REPORTED BY EVANS IN 1976-77, FROM WHICH A FIR STUMP 62" DIA (GLO BT) BEARS S25°W, 31.0 FEET, WITH A HEALED BLAZE; A DECAYED MAPLE STUMP (GLO BT), SIZE INDETERMINATE, BEARS N3°W, 7.9 FEET, WITH NO MARKS VISIBLE; A FIR STUMP 25" DIA (BLM BT) BEARS N26-1/4°E, 76.6 FEET, WITH A HEALED BLAZE; A MAPLE 8" DIA BEARS N70°E, 25.8 FEET, WITH SCRIBE MARKS "T14S R7W BT" VISIBLE ON BARK; A FIR 14" DIA BEARS S53°E, 10.3 FEET, WITH A HEALED BLAZE; A CEDAR 8" DIA BEARS S78°W, 27.6 FEET, WITH SCRIBE MARKS "X BT" VISIBLE ON OPEN DOUBLE BLAZE; A FIR 16" DIA BEARS N61°W, 32.9 FEET, WITH HEALED BLAZE.
- [18] BUREAU OF LAND MANAGEMENT (BLM) CORRECTION PLAT BY ROYCE W. HILL, CADASTRAL SURVEYOR, DATED APRIL 15, 2008. THE CORNER MONUMENTED WITH AN IRON POST, 2-1/2" DIA, FIRMLY SET, PROJECTING 4" ABOVE GROUND, (ALONGSIDE OF WHICH IS AN IRON PIPE, 1" DIA, FIRMLY SET, PROJECTING 6" ABOVE GROUND), WITH BRASS CAP MARKED AS REPORTED BY EVANS IN 1976-77, FROM WHICH A FIR STUMP 62" DIA (GLO BT) BEARS S25°W, 31.0 FEET, WITH A HEALED BLAZE; A DECAYED MAPLE STUMP (GLO BT), SIZE INDETERMINATE, BEARS N3°W, 7.9 FEET, WITH NO MARKS VISIBLE; A FIR STUMP 25" DIA (BLM BT) BEARS N26-1/4°E, 76.6 FEET, WITH A HEALED BLAZE; A MAPLE 8" DIA BEARS N70°E, 25.8 FEET, WITH SCRIBE MARKS "T14S R7W BT" VISIBLE ON BARK; A FIR 14" DIA BEARS S53°E, 10.3 FEET, WITH A HEALED BLAZE; A CEDAR 8" DIA BEARS S78°W, 27.6 FEET, WITH SCRIBE MARKS "X BT" VISIBLE ON OPEN DOUBLE BLAZE; A FIR 16" DIA BEARS N61°W, 32.9 FEET, WITH HEALED BLAZE.
- [19] BENTON COUNTY SURVEY NO. 10788 BY ROBERT ALAN COOK, P.L.S., DATED OCTOBER 10, 2016. FOUND 1976 BLM BRASS CAP WITH FIBERGLASS POST RISER IN PIPE. D. FIR 24" DIA BEARS N62°W, 32.9 FEET; D. FIR 18" DIA BEARS S53°E, 10.3 FEET; MAPLE 16" DIA BEARS N70°E, 25.8 FEET.

FIRM/AGENCY: BENTON COUNTY SURVEYOR'S OFFICE
ADDRESS: 360 S.W. AVERY AVE., CORVALLIS, OR 97333; PH. 541-766-6821
RESEARCH BY: DAVID L. MALONE, P.L.S.
DATA ENTRY BY: SAME

BENTON COUNTY CORNER RESTORATION FORM, PAGE 1 OF 3, 147300600R4**SEE CORNER HISTORY FORM FOR RECORDS ETC.**

CORNER RESTORATION FIELD BOOK NUMBER 33 PAGE(S) 60-61 DATE 05/05/2021
TOWNSHIP 14 SOUTH, RANGE 7 WEST, WILLAMETTE MERIDIAN; SECTION 4 CORNER SOUTHWEST
DONATION LAND CLAIM N/A CORNER N/A
CONDITION REPORT ; REFERENCED OUT X; RENEWED ; SURVEYED IN

LOCATION AND COMMENTS:

CORNER IS LOCATED ON A STEEP NORTHEAST FACING SLOPE WITH ±50 YEAR OLD D. FIR TO THE NORTHWEST, A CLEARCUT TO THE SOUTHWEST, AND A MIX OF TREE TYPES AND AGE TO THE EAST. TO REACH CORNER FROM THE INTERSECTION OF HIGHWAY 34 AND HONEYGROVE ROAD, TRAVEL EASTERLY ON HONEYGROVE ROAD FOR 0.70 MILES TO BLM ROAD 14-7-5.1 ON THE RIGHT. TURN RIGHT ONTO BLM ROAD 14-7-5.1 FOR 0.15 MILES TO A WYE, STAY LEFT FOR 0.03 MILES TO A WYE, STAY LEFT FOR 0.06 MILES TO A WYE, STAY RIGHT FOR 0.25 MILES TO A WYE, STAY RIGHT FOR 0.21 MILES TO A WYE, TURN LEFT FOR 0.69 MILES AND PARK. WALK ABOUT 280 FEET NORTHEAST TO THE CORNER. CORNER IS BAD FOR PREMARKING AND POOR FOR GPS CONTROL.

MONUMENTS AND ACCESSORIES FOUND (CONDITION AND SOURCE):

1. FOUND 3-1/4" BRASS CAP MARKED AS SHOWN ON PAGE 3 OF 3, ON 2-1/2" IRON PIPE, FIRMLY SET AND UNDISTURBED, UP 8" ABOVE GROUND SURFACE FOR THE CORNER.
(SET POST AS PER RECORD [01]).
(FIND THE REMAINS OF ORIGINAL POST AND SET NEW POST 4 FEET LONG, 4" SQUARE, 24" IN GROUND AS PER RECORD [02]).
(ORIGINAL CORNER. SET A WAGON STANDARD AS PER RECORD [03]).
(SET WAGON STANDARD WITH IRON AS PER RECORD [04]).
(WAGON STANDARD AS PER RECORDS [06] AND [07]).
(CORNER SET. IRON IN PLACE AS PER RECORD [08]).
(DROVE 3/4" X 3' GALVANIZED IRON PIPE AND ATTACHED "BLM APPROX. COR. PT. #118" IN SLIT IN PIPE AS PER RECORD [09]).
(IRON PIPE, 1" DIA, FIRMLY SET, PROJECTING 6" ABOVE GROUND. SET AN IRON POST 28" LONG, 2-1/2" DIA, 24" IN THE GROUND, WITH BRASS CAP MARKED "T14S R7W S5 S4 S8 S9 1976". RESET IRON PIPE ALONGSIDE IRON POST AS PER RECORD [12]).
(FOUND BRASS CAP AS PER RECORD [14]).
(FOUND 3-1/4" BLM BRASS CAP ON 2-1/2" IRON PIPE. CAP IS MARKED "T14S R7W S5 S4 S8 S9 1976" AS PER RECORDS [15] AND [16]).
(IRON POST, 2-1/2" DIA, FIRMLY SET, PROJECTING 4" ABOVE GROUND, (ALONGSIDE OF WHICH IS AN IRON PIPE, 1" DIA, FIRMLY SET, PROJECTING 6" ABOVE GROUND), WITH BRASS CAP MARKED AS REPORTED BY EVANS AS PER RECORDS [17] AND [18]).
(FOUND 1976 BLM BRASS CAP WITH FIBERGLASS POST RISER IN PIPE AS PER RECORD [19]).
2. FOUND ROTTEN D. FIR STUMP 32" DIA BEARS N84°00'E, 101.62 FEET TO CENTER, OPENED TO VISIBLE SCRIBING "BT". **BASIS OF BEARINGS FOR THIS RESTORATION.**
(FIR 32" DIA BEARS N84°E, 155 LINKS [102.30 FEET], MARKED "XBT" AS PER RECORD [12]).
(FIR STUMP 32" DIA BEARS N84°E, 102.3 FEET, HEALED FACE AS PER RECORD [16]).
3. FOUND ROTTEN D. FIR STUMP 31" DIA BEARS N26°27'E, 76.46 FEET TO CENTER, WITH ROTTEN FACE.
(FIR 25" DIA BEARS N26-1/4°E, 116 LINKS [76.56 FEET], MARKED "T14S R7W S4 BT" AS PER RECORD [12]).
(FIR STUMP 25" DIA BEARS N26-1/2°E, 76.6 FEET, HEALED FACE AS PER RECORD [16]).
(FIR STUMP 25" DIA BEARS N26-1/4°E, 76.6 FEET, WITH A HEALED BLAZE AS PER RECORDS [17] AND [18]).
4. FOUND 5 FOOT TALL ROTTEN D. FIR STUMP 48" DIA BEARS S27°27'W, 30.87 FEET TO CENTER.
(FIR 18" DIA BEARS S25°W, 47 LINKS [31.02 FEET] AS PER RECORDS [01] AND [02]).
(FIR 18" DIA BEARS S25°W, 0.47 CHAINS [31.02 FEET], STANDING AS PER RECORDS [03], [04] AND [07]).
(D. FIR 62" DIA BEARS S25°W, 47 LINKS [31.02 FEET], HEALED FACE AS PER RECORD [09]).
(FIR STUMP 62" DIA BEARS S25°W, 47 LINKS [31.02 FEET], WITH HEALED BLAZE AS PER RECORD [12]).
(FOUND FIR STUMP 62" DIA BEARS S25°W, 31.0 FEET, HEALED FACE AS PER RECORD [16]).
(FIR STUMP 62" DIA BEARS S25°W, 31.0 FEET, WITH A HEALED BLAZE AS PER RECORDS [17] AND [18]).
5. FOUND MAPLE 11" DIA BEARS N70°41'E, 25.60 FEET TO CENTER, BARK SCRIBED "T14SR7WS4BT". SET ALUMINUM NAIL AND PLASTIC WASHER IN SOUTHEASTERLY BASE FOR DISTANCE MEASUREMENT.
(MAPLE 8" DIA BEARS N70°E, 25.8 FEET, SCRIBED "T14S R7W S4 BT" AS PER RECORD [12]).
(MAPLE 8" DIA BEARS N70°E, 25.8 FEET, WITH SCRIBE MARKS "T14S R7W BT" VISIBLE ON BARK AS PER RECORDS [17] AND [18]).
(MAPLE 16" DIA BEARS N70°E, 25.8 FEET AS PER RECORD [19]).
6. FOUND D. FIR 17" DIA WITH HEALED FACE BEARS S56°24'E, 10.37 FEET TO CENTER. SET ALUMINUM NAIL AND PLASTIC WASHER IN SOUTHWESTERLY BASE FOR DISTANCE MEASUREMENT.
(FIR 12" DIA BEARS S53°E, 10.3 FEET, SCRIBED "T14S R7W S9 BT" AS PER RECORD [16]).
(FIR 14" DIA BEARS S53°E, 10.3 FEET, WITH A HEALED BLAZE AS PER RECORDS [17] AND [18]).
(D. FIR 18" DIA BEARS S53°E, 10.3 FEET AS PER RECORD [19]).
7. FOUND CEDAR 6" DIA WITH HEALED DOUBLE BLAZE BEARS S80°32'W, 27.44 FEET TO CENTER. SET ALUMINUM NAIL AND PLASTIC WASHER IN SOUTHEASTERLY BASE FOR DISTANCE MEASUREMENT.
(CEDAR 4" DIA BEARS S78°W, 27.6 FEET, SCRIBED "X BT" AS PER RECORD [16]).
(CEDAR 8" DIA BEARS S78°W, 27.6 FEET, WITH SCRIBE MARKS "X BT" VISIBLE ON OPEN DOUBLE BLAZE AS PER RECORDS [17] AND [18]).

SEE CORNER HISTORY FORM FOR RECORDS ETC.

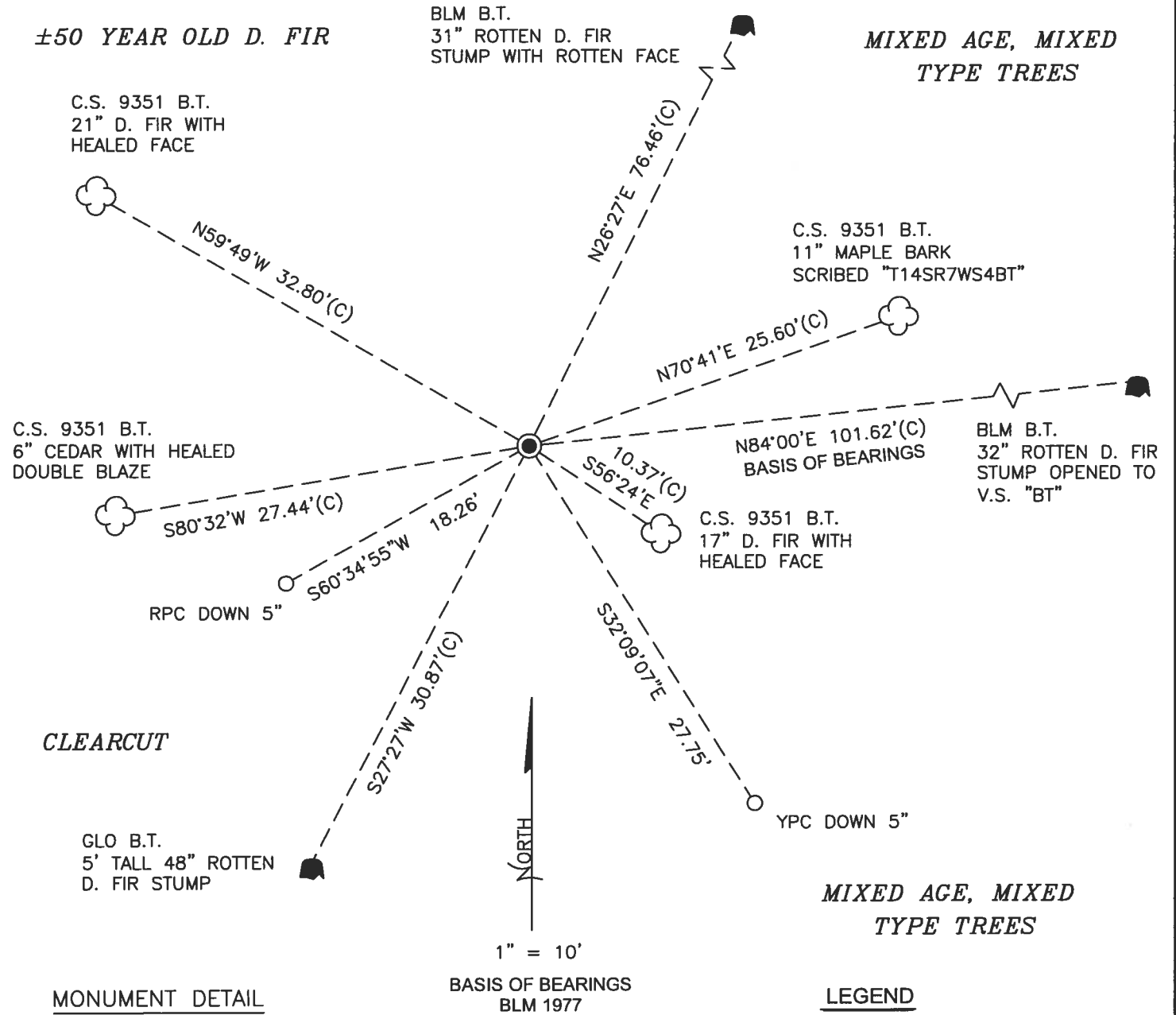
DATE 05/05/2021

8. FOUND D. FIR 21" DIA WITH HEALED FACE BEARS N59°49'W, 32.80 FEET TO CENTER. SET ALUMINUM NAIL AND PLASTIC WASHER IN NORTHEASTERLY BASE FOR DISTANCE MEASUREMENT.
(FIR 15" DIA BEARS N61°W, 32.9 FEET, SCRIBED "T14S R7W S5 BT" AS PER RECORD [16]).
(FIR 16" DIA BEARS N61°W, 32.9 FEET, WITH HEALED BLAZE AS PER RECORDS [17] AND [18]).
(D. FIR 24" DIA BEARS N62°W, 32.9 FEET AS PER RECORD [19]).

MONUMENT SET (PROCEDURES AND DESCRIPTION):

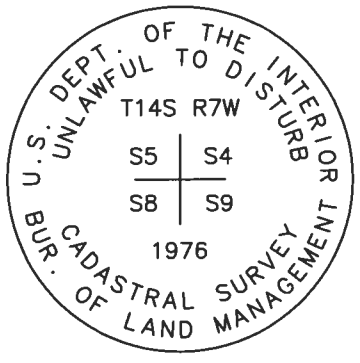
FOUND 3-1/4" BRASS CAP MARKED AS SHOWN ON PAGE 3 OF 3, ON 2-1/2" IRON PIPE, FIRMLY SET AND UNDISTURBED, UP 8" ABOVE GROUND SURFACE FOR THE CORNER. FOUND 1" INSIDE DIAMETER IRON PIPE UP 8" ABOVE GROUND SURFACE ON EASTERLY SIDE OF BRASS CAP WITH WHITE FIBERGLASS POST INSIDE IT. THE BRASS CAP AND PIPE WERE SET IN 1976 BY LARRY D. EVANS, CADASTRAL SURVEYOR, IN PLACE OF A 1" DIA IRON PIPE SET IN 1964 BY LEO J. MARTIN, BLM FORESTER, FROM ORIGINAL GENERAL LAND OFFICE (GLO) BEARING TREES. THE BRASS CAP AND PIPE AGREE WITH THE REMAINING GLO BEARING TREE STUMP AND THE BUREAU OF LAND MANAGEMENT (BLM) BEARING TREE STUMPS. THE BRASS CAP AND PIPE ARE ACCEPTED AS THE PERPETUATION OF THE ORIGINAL CORNER POSITION.

SET TWO NEW IRON ROD ACCESSORIES AS SHOWN ON PAGE 3 OF 3. SET 6 FOOT ORANGE CARSONITE "SURVEY MARKER" POST 1 FOOT NORTH OF BRASS CAP.



MONUMENT DETAIL

LEGEND



- O SET 5/8" X 30" REBAR WITH PLASTIC CAP
- YPC YELLOW PLASTIC CAP MARKED "BENTON COUNTY SURVEYOR"
- RPC RED PLASTIC CAP MARKED "BENTON COUNTY SURVEYOR"
- (C) MEASUREMENT TO CENTER
- GOVERNMENT MONUMENT FOUND AS SHOWN
- V.S. VISIBLE SCRIBING
- C.S. COUNTY SURVEY
- GLO GENERAL LAND OFFICE
- BLM BUREAU OF LAND MANAGEMENT
- B.T. BEARING TREE
- BEARING TREE STUMP AS NOTED
- ☁ BEARING TREE AS NOTED

3-1/4" BRASS CAP

NEW ACCESSORIES:

1. SET REBAR (SEE LEGEND) S32°09'07"E, 27.75 FEET AND 5 INCHES BELOW GROUND LEVEL.
2. SET REBAR (SEE LEGEND) S60°34'55"W, 18.26 FEET AND 5 INCHES BELOW GROUND LEVEL.

NOTES:

COMPASS DECLINATION IS 15° EAST. ALL MEASURED DISTANCES AND BEARINGS ARE TO THE CENTER OF THE OBJECT, UNLESS OTHERWISE NOTED. ALL BEARING TREES ARE PAINTED AND HAVE A B.T. TAG ATTACHED, FACING THE CORNER UNLESS OTHERWISE NOTED. ALL NEW BEARING TREES HAVE A PLASTIC WASHER (STAMPED "SURVEY MARKER DO NOT REMOVE") ATTACHED BY AN ALUMINUM NAIL TO THE SIDE CENTER OF THE TREE FOR DISTANCE MEASUREMENT, UNLESS OTHERWISE NOTED.

THIS RESTORATION WAS PERFORMED AT THE DIRECTION AND APPROVAL OF THE BENTON COUNTY SURVEYOR *[Signature]*

REGISTERED
PROFESSIONAL
LAND SURVEYOR

FIRM/AGENCY: BENTON COUNTY SURVEYOR'S OFFICE
 ADDRESS: 360 S.W. AVERY AVE., CORVALLIS, OR 97333; PH. 541-766-6821
 PRESENT: DAVID L. MALONE, P.L.S., AND BERNARD ALTENBACH, SURVEY TECH.
 EQUIPMENT: NIKON NIVO3.C WITH SURVEY PRO ONBOARD.

[Signature]

OREGON
 JANUARY 12, 1999
 DAVID L. MALONE
 51523

RENEWAL DATE: 12/31/22

CORNER RESTORATION BOOK NO. 1

C.S. # 54 cont. N.W. cor. of Geo. H. Rycroft's D.L.C. #44, Tp. 14-8.
 Set $\frac{3}{8}$ " pipe
 Double oak 26" in dia. brs. N. 16° E. 1.827'
 Ash 8" " " " N. 12° 20' W. 9.933' same as for claim 45
 Witnesses, ~~Geo. H.~~ M. P. & Chas. Rycroft, 4/4/12

" # 82. cont. Cor. of bend in W. line of John J. Fortson's D.L.C. #57. Tp. 14-6.
 2 yellow stakes, 4" in dia. stump std.
 Oak 6" in dia. brs. S. 18° E. .339'
 Fir 24" " " " S. 77° 30' W. .268'
 Witnesses, J.E. Moriso, W.R. Starny, 4/20/12;

" # 125. 1/4 Sec. cor. bet. secs. 3+4 Tp. 14-7.
 Set stone 10x12x14" ~~over~~ over stone 5x5x8" orig. cor.
 Maple 8" in dia. brs. N. 50° E. .24' std.
 " Limbs 5" " " " S. 57° W. .20' " May 20, 1912
 Witnesses, Frank Spencer, Geo. J. Subrell & Sam Hembling.

" # 128. 1/4 Sec. cor. bet. secs. 4+5. Tp. 14-7.
 Set $\frac{7}{8}$ " bolt. orig. cor. stump std.
 Fir 28" in dia. brs. N. 37° 30' E. .320'
 " 40" " " " S. 45° E. .45' std.
 Witnesses J. & F. Spencer, S. Hembling & Geo. J. Subrell. 3/20/12

" # 128. Sec. cor. to secs. 4, 5, 8, 9, Tp. 14-7.
 Set wagon standard with iron orig. cor.
 W. Fir 12" in dia. brs. N. 29° E. .32 mag std.
 Maple 8" " " " S. 31° 40' E. .992
 Fir 18" " " " S. 25° W. .47 std.
 Maple 24" " " " N. 3° W. .12 "
 Witnesses J. & F. Spencer, S. Hembling, & Geo. J. Subrell. 3/19/12

~~no. number 1/4 Sec. cor. bet. secs. 21+22. Tp. 13-7.
 Set casting $\frac{5}{8}$ " x 8" x 12" All out 3-11-47
 Maple 24" in dia. brs. N. 86° 45' E. 1.770' See Page 293
 Fir stump 48" " " " N. 73° E. .51' std.
 Witnesses, Geo. Earnest, Lee Longmeyer,
 Mar. 21, 1912.~~

C.S. # 75. S.W. cor. of David Buttingfield's D.L.C. #47. Tp. 12-5
 2 stones 3x5x10", 5x6x11"
 Service 5" in dia. brs. N. 85° W. .597'
 Witnesses Platt. Glass,

April. 13, 1912.

C.S. # 148

For correct Reestablishment of this cor see C.S. 209. Page 79. This volume June-1914
~~Cor of secs. 7-8-17+18 Tp. 10S, R 7W. W.N.
 Set 4x4x46" maple stake for cor. from which
 an alder 18" dia. brs. S 67° 45' E 23 lbs dist.
 Fir 18" dia. brs. S 12° 05' W 96.6 " "
 Two original stumps standing Witnesses J. Morgan & Max Goshen
 Mar 26 1912~~

Section corner to sections 4,5,8, and 9, Twp. 14-7

Reestablishment by W. C. Galloway

March 19, 1912

Set wagon standard with iron	original corner		
W. Fir 12" in diam bears N. 29° E	.32 chains	snag	standing
Maple 8" in diam bears S. 31° 40' E	.992 chains		
Fir 18" in diam bears S. 25° W	.47 chains	standing	
Maple 24" in diam bears N. 3° W	.12 chains	standing	

Witnesses J. and F. Spencer, L. Hembling, and Geo. T. Subrell

Leo Martin

2-12-64

Fd Maple 24", now 42", bears N 3° W	.12 chs
Fd Fir 18", now 62" bears S 25° W	.47 chs
Fd stump hole (?)	
Fd Maple sprout on old stump (?)	
Set 3/4"x3' galv. pipe by intersection of Maple & Fir bearing trees	

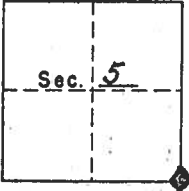
SEE COR. REST. NO. 2508 (CN 7/23/90)

A1-258
7-29-88

Cor. Pt. #118 LOCAL RECORD
CORNERS OF THE CADASTRAL SURVEY GRID

UNITED STATES
DEPARTMENT OF THE INTERIOR
BUREAU OF LAND MANAGEMENT

T. 14S R. 7W, Will. Mer., Ore. State.



- SYMBOLS
- Official corner found
 - Probable corner found, authenticity doubtful.
 - Corner searched for and not found.

Reported By Leo J. Martin
Signature
Title Forester
Date 8-12-64

Sec. Corner common to Secs. 4, 5, 8 & 9 is a mound of stone, tree, rock, fire pit, iron pipe size 3/4" x 3'

LEGIBLE MARKS ON BEARING OBJECTS

Healed Face	Healed Face		

KIND	Maple	D. Fir	stump	Maple sprout
SIZE	42"	62"	Hole	on old stump
BEARING	N03°W	S25°W	Record	Record
DISTANCE	12 Lts.	47 Lts.	Record	Record
BT TAG POSTED	Yes	Yes	No	No

ADDITIONAL INFORMATION

Corner was reestablished by County Surveyor. Maple & Fir are original B.T.'s
Drove $\frac{3}{4}$ " x 3' Galv. I.P. and
Pt. #118 in slit in pipe.
Pipe was set by intersection of lines from Orig. B.T.'s

BENTON COUNTY SURVEYORS OFFICE - CORNER RESTORATION

2508

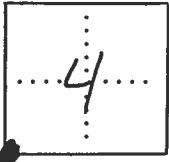
T. 14 S, R. 7 W, W. B. & M., BENTON COUNTY, OREGON

SECTION 4

REPORTED BY Leo J. Martin

TITLE Forester

DATE 2-12-64



● OFFICIAL CORNER FOUND

○ CORNER SET

SEC CORNER COMMON TO SEC. 4, 5, 8 & 9

Iron Pipe ~~1/2" x 3'~~ 3/4" x 3'

DESCRIBE

ADDITIONAL INFORMATION

Attached BLM Approx Corner Pt #118 in slit in pipe.

SEE THE CORNER CARD IN THE T145 RTW FILE IN THE CORNER RESTORATION CORRESPONDENCE FILE DRAWER (CJL7/23/9J).

OVER

LEGIBLE MARKS ON BEARING OBJECTS

	Healed Face	Healed Face		
KIND	Maple	D. Fir		
SIZE	42"	62"		
BEARING	N 3° W	S 25° W		
DISTANCE	12 LKS	47 LKS.		
BT TAG POSTED	yes	yes		

BENTON COUNTY SURVEYORS OFFICE - CORNER RESTORATION

2509

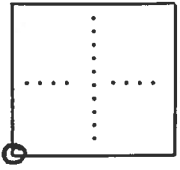
T 14 S, R 7 W, W. B. & M., BENTON COUNTY, OREGON

SECTION 4

REPORTED BY Evans

TITLE Cadastral Surveyor

DATE March 1977



● OFFICIAL CORNER FOUND

○ CORNER SET

SEE CORNER COMMON TO SEC. 4, 5, 8 & 9

trap iron post 2 1/2" x 28" w/ brass cap
DESCRIBE

ADDITIONAL INFORMATION

62" fir stump - S. 25° W, 47 lks w/ healed blaze
43" Maple - N 3° W, 12 lks w/ healed blaze
set 1" dia. pipe alongside iron post

SEE PG. 22 OF THE BLM FIELD NOTES IN THE
T14S R7W FILE IN THE CORNER RESTORATION
CORRESPONDENCE FILE DRAWER (CJL 7/23/90)

OVER

LEGIBLE MARKS ON BEARING OBJECTS

	T 14 S		
	R 7 W	" X BT "	
	S 4		
	BT		
KIND	<u>Fir</u>	<u>Fir</u>	
SIZE	<u>25"</u>	<u>32"</u>	
BEARING	<u>N 26 1/2° E</u>	<u>N 94° E</u>	
DISTANCE	<u>116 lks</u>	<u>155 lks</u>	
BT TAG POSTED			