

147540100

CORNER FILE TRACKING

S:\Survey Corners\CORNERS\Templates\Filetrac2.doc
10/04/2010

CORNER NUMBER
147540100

STEP	HISTORY	RESTORATION
Form Prepared, DB	9/21/15	6/17/24
Field Inspection, DB	6/10/24	6/10/24
Finish index (count unit)	9/21/15	6/10/24
Counter Index	6/11/24	6/11/24
GIS Index Form	6/11/24	6/11/24
Checked, DB	6/14/24	6/14/24
Form Edited, DB	6/17/24	6/17/24
Form Signed, DB	6/17/24	6/17/24
Authorize Payment, DB	—	—
Archive Digital Files	6/17/24	6/17/24
Collect Documents	6/17/24	6/17/24
PDF File	6/17/24	6/17/24
Copy For Filming	6/17/24	6/17/24
Scanned (pdf to laserfiche)	6/17/24	6/17/24
Filmed (Archived), DB		
Filed, DB		

(DB) = Entry needed in database (Access).

COMMENTS:

DATE 09/21/2015TOWNSHIP 14 SOUTH, RANGE 7 WEST, WILLAMETTE MERIDIAN; SECTION 35 CORNER SOUTH 1/4
DONATION LAND CLAIM N/A CORNER N/A**COMMON CORNER(S):**

POINT ON NORTH LINE OF SECTION 2, TOWNSHIP 15 SOUTH, RANGE 7 WEST

RECORDS (INFORMATION IN *BOLD ITALICS* IS COUNTY STAFFS' INTERPRETATION OF THE RECORD)

BASED ON EXTENSIVE RESEARCH AND RECOVERY OF EVIDENCE, THIS OFFICE HAS DETERMINED THAT MOST GENERAL LAND OFFICE SURVEYORS IN BENTON COUNTY BEFORE 1890 MEASURED TO THE FACE OF BEARING TREES.

- [01] GENERAL LAND OFFICE (GLO) NOTES BY CHARLES M. COLLIER, D.S., DATED APRIL 24, 1893. *SET POST 3 FEET LONG, 3" SQUARE, 24" IN THE GROUND FOR 1/4 SECTION CORNER MARKED "1/4S" ON NORTH FACE, FROM WHICH A CEDAR 30" DIA BEARS N21-1/2°E, 100 LINKS (66.00 FEET) MARKED "1/4S BT"; A CEDAR 10" DIA BEARS S60°W, 24 LINKS (15.84 FEET) MARKED "1/4S BT".*
- [02] GLO NOTES BY EDWARD F. SHARP, D.S., DATED JULY 30, 1897. *A POST 12" ABOVE GROUND, 3" SQUARE, MARKED AND WITNESSED AS DESCRIBED BY THE SURVEYOR GENERAL.*
- [03] GLO NOTES BY NORMAN D. PRICE, CADASTRAL ENGINEER, AND OSKAR T. DAUELSBERG, PUBLIC LAND SURVEYOR, DATED SEPTEMBER 16, 1940. *POINT FOR 1/4 SECTION CORNER OF SECTION 35 ONLY, DETERMINED BY REFERENCE TO THE RECORD DISTANCES FROM TWO ORIGINAL BEARING TREES. AT POINT FOR CORNER, SET AN IRON POST, 3 FEET LONG, 1" DIA, 28" IN THE GROUND, FOR 1/4 SECTION CORNER OF SECTION 35 ONLY, WITH BRASS CAP MARKED "1/4 S35 1940" FROM WHICH A CEDAR 38" DIA (GLO BT) BEARS N20°E, 100 LINKS (66.00 FEET), BLAZE HEALED; A CEDAR 18" DIA (GLO BT) BEARS S66-1/2°W, 24 LINKS (15.84 FEET), MARKED "1/4S BT", I DESTROY ALL MARKS ON THIS TREE; A FIR 46" DIA BEARS N28°E, 51 LINKS (33.66 FEET) MARKED "1/4 S35 BT"; A FIR 44" DIA BEARS N2°W, 116 LINKS (76.56 FEET) MARKED "1/4 S35 BT". THE BRASS CAP AT THE 1/4 SECTION CORNER FOR SECTION 2 ONLY BEARS S89°11'W, 1.38 CHAINS (91.08 FEET).*
- [04] BENTON COUNTY SURVEY NO. 2815 BY RALPH G. BARNES, P.L.S., DATED AUGUST 31, 1956. *CORNER TIED BUT NOT DESCRIBED.*
- [05] BENTON COUNTY SURVEY NO. 8941 BY HARVEY M. CHRISTENSEN, P.L.S., DATED FEBRUARY 15, 1995. *FOUND 2.5" 1940 BLM BRASS CAP MARKED "T15S R7W 1/4 S35 1940". D. FIR STUMP 46" DIA (GLO BT) BEARS N28°E, 33.5 FEET, NO MARKS VISIBLE. CEDAR STUMP 35" DIA (GLO BT) BEARS N20°E, 66.0 FEET, NO MARKS VISIBLE. FOUND 2.5" BRASS CAP "LS1084" BEARS S89°39'49"W, 90.78 FEET.*
- [06] BENTON COUNTY CORNER RESTORATION FORM NO. 157540700R1 BY JIM S. PETERSON, P.L.S., DATED FEBRUARY 16, 1995. *FOUND 1940 GLO BRASS CAP BEARS S89°02'E, 90.78 FEET FROM THE NORTH 1/4 CORNER OF SECTION 2, TOWNSHIP 15 SOUTH, RANGE 7 WEST.*

FIRM/AGENCY: BENTON COUNTY SURVEYOR'S OFFICE
ADDRESS: 360 S.W. AVERY AVE., CORVALLIS, OR 97333; PH. 541-766-6821
RESEARCH BY: DAVID L. MALONE, P.L.S.
DATA ENTRY BY: SAME

BENTON COUNTY CORNER RESTORATION FORM, PAGE 1 OF 2, 147540100R2

SEE CORNER HISTORY FORM FOR RECORDS ETC.

CORNER RESTORATION FIELD BOOK NUMBER 34 PAGE(S) 73 DATE 06/10/2024
TOWNSHIP 14 SOUTH, RANGE 7 WEST, WILLAMETTE MERIDIAN; SECTION 35 CORNER SOUTH 1/4
DONATION LAND CLAIM N/A CORNER N/A
CONDITION REPORT ; REFERENCED OUT ; RENEWED X; SURVEYED IN

LOCATION AND COMMENTS:

CORNER IS LOCATED IN A FLAT AREA THAT SEEMS TO BE INUNDATED WITH WATER ON OCCASION BETWEEN A CREEK AND A GRAVEL TIMBER ROAD, WITH CEDAR AND VINE MAPLE AND SCATTERED OTHER TREES. TO REACH CORNER FROM THE INTERSECTION OF NICHOLS ROAD AND BLM SOUTH FORK ROAD, TRAVEL WESTERLY ON BLM SOUTH FORK ROAD FOR 5.70 MILES TO A TIMBER ACCESS ROAD ON THE LEFT, TURN LEFT FOR 0.38 MILES TO A WYE, STAY LEFT FOR 0.03 MILES TO A WYE, STAY RIGHT FOR 0.67 MILES TO A WYE, STAY LEFT FOR 0.30 MILES AND PARK. CORNER IS EAST ABOUT 70 FEET. CORNER IS BAD FOR GPS CONTROL.

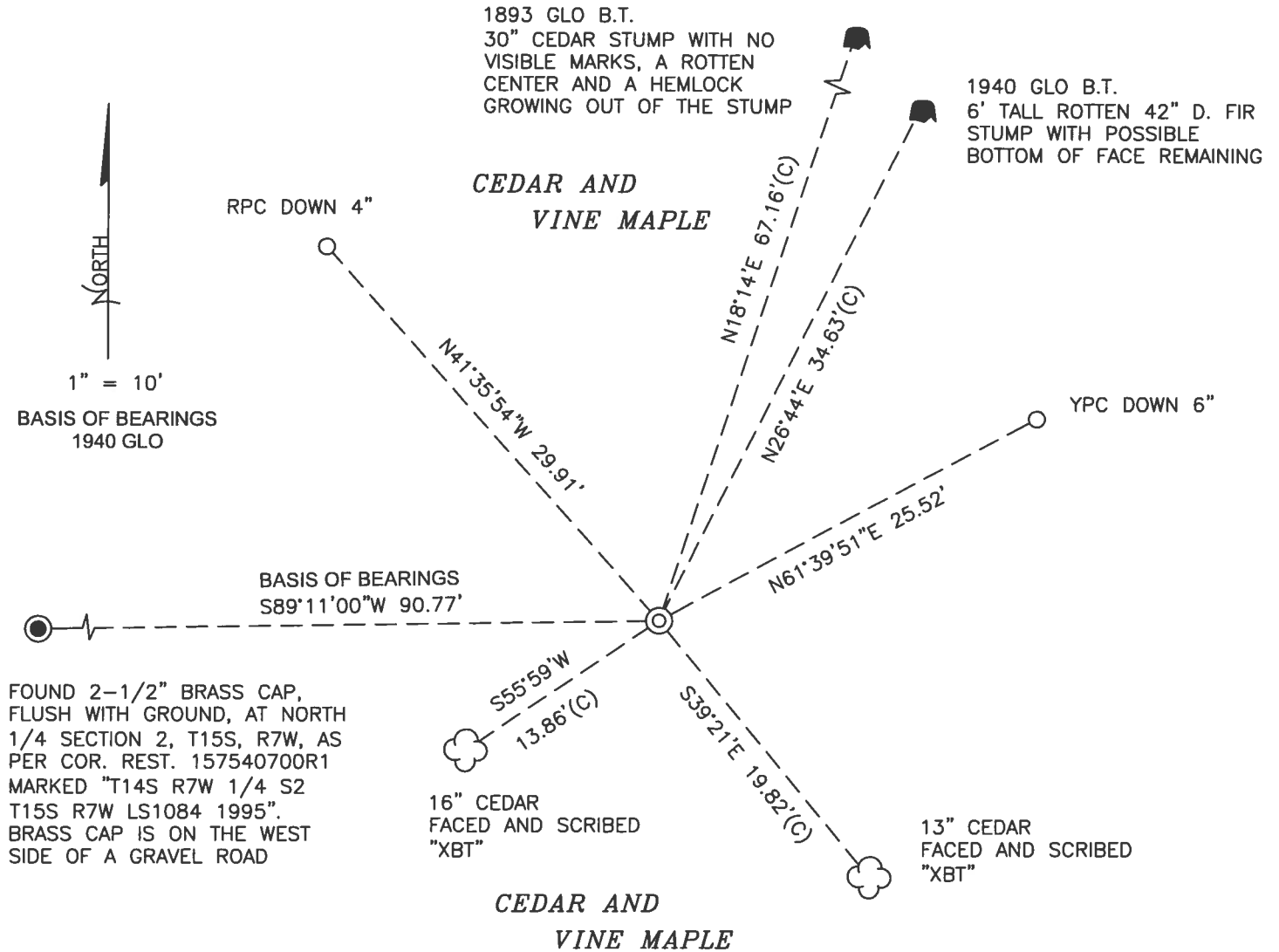
MONUMENTS AND ACCESSORIES FOUND (CONDITION AND SOURCE):

1. FOUND 2-1/2" BRASS CAP MARKED "U.S. GENERAL LAND OFFICE SURVEY PENALTY \$250 FOR REMOVAL 1/4 S35 1940" ON 1" IRON PIPE, TURNED 90° FROM NORTH, UP 1' ABOVE GROUND SURFACE, 3' LONG WITH FLARED END, FOR THE CORNER.
(SET POST 3 FEET LONG, 3" SQUARE, 24" IN THE GROUND MARKED "1/4S" ON NORTH FACE AS PER RECORD [01]).
(A POST 12" ABOVE GROUND, 3" SQUARE, MARKED AND WITNESSED AS DESCRIBED BY THE SURVEYOR GENERAL AS PER RECORD [02]).
(POINT FOR 1/4 SECTION CORNER DETERMINED BY REFERENCE TO THE RECORD DISTANCES FROM TWO ORIGINAL BEARING TREES. AT POINT FOR CORNER, SET AN IRON POST, 3 FEET LONG, 1" DIA, 28" IN THE GROUND, FOR 1/4 SECTION CORNER OF SECTION 35 ONLY, WITH BRASS CAP MARKED "1/4 S35 1940" AS PER RECORD [03]).
(FOUND 2.5" 1940 BLM BRASS CAP MARKED "T15S R7W 1/4 S35 1940" AS PER RECORD [05]).
(FOUND 1940 GLO BRASS CAP, S1/4 CORNER SECTION 35 AS PER RECORD [06]).
2. FOUND 2-1/2" BRASS CAP MARKED "T14S R7W 1/4 S2 T15S R7W LS1084 1995", FLUSH WITH GROUND SURFACE, BEARS S89°11'00"W, 90.77 FEET. HELD FOR BASIS OF BEARINGS FOR THIS RESTORATION.
(THE BRASS CAP AT THE 1/4 SECTION CORNER FOR SECTION 2 ONLY BEARS S89°11'W, 1.38 CHAINS [91.08 FEET] AS PER RECORD [03]).
(FOUND 2.5" BRASS CAP "LS1084" BEARS S89°39'49"W, 90.78 FEET AS PER RECORD [05]).
(SET 2" INSIDE DIAMETER X 30" LONG GALVANIZED IRON PIPE, WITH 2-1/2" BRASS CAP STAMPED "T14S R7W 1/4 S2 T15S R7W LS1084 1995", FOR THE N1/4 CORNER SECTION 2, BEARS N89°02'W, 90.78 FEET AS PER RECORD [06]).
3. FOUND CEDAR STUMP 30" DIA WITH NO VISIBLE MARKS BEARS N18°14'E, 67.16 FEET TO CENTER. THE CENTER IS ROTTEN OUT AND A HEMLOCK TREE IS GROWING OUT OF THE STUMP.
(CEDAR 30" DIA BEARS N21-1/2°E, 100 LINKS [66.00 FEET] MARKED "1/4S BT" AS PER RECORD [01]).
(CEDAR 38" DIA BEARS N20°E, 100 LINKS [66.00 FEET], BLAZE HEALED AS PER RECORD [03]).
(CEDAR STUMP 35" DIA BEARS N20°E, 66.0 FEET, NO MARKS VISIBLE AS PER RECORD [05]).
4. FOUND 6' TALL ROTTEN D. FIR STUMP 42" DIA WITH POSSIBLE REMAINS OF BOTTOM OF FACE BEARS N26°44'E, 34.63 FEET TO CENTER.
(FIR 46" DIA BEARS N28°E, 51 LINKS [33.66 FEET] MARKED "1/4 S35 BT" AS PER RECORD [03]).
(D. FIR STUMP 46" DIA BEARS N28°E, 33.5 FEET, NO MARKS VISIBLE AS PER RECORD [05]).

MONUMENT SET (PROCEDURES AND DESCRIPTION):

FOUND 2-1/2" BRASS CAP MARKED "U.S. GENERAL LAND OFFICE SURVEY PENALTY \$250 FOR REMOVAL 1/4 S35 1940" ON 1" IRON PIPE, TURNED 90° FROM NORTH, UP 1' ABOVE GROUND SURFACE, 3' LONG WITH FLARED END, FOR THE CORNER. THE BRASS CAP AND IRON PIPE WERE SET IN 1940 BY NORMAN D. PRICE, CADASTRAL ENGINEER, AND OSKAR T. DAUELSBERG, PUBLIC LAND SURVEYOR, BY RECORD DISTANCES FROM TWO ORIGINAL GENERAL LAND OFFICE (GLO) BEARING TREES. THE BRASS CAP AND IRON PIPE ARE ACCEPTED AS THE PERPETUATION OF THE ORIGINAL CORNER POSITION.

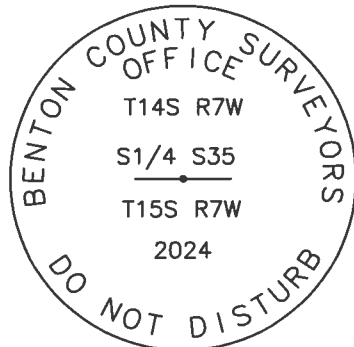
REMOVED THE BRASS CAP AND 1" IRON PIPE, AND IN THE SAME HORIZONTAL POSITION, SET A 2" X 31-1/2" GALVANIZED IRON PIPE WITH 3-1/4" BRASS DISK CEMENTED IN THE TOP, MARKED AS SHOWN ON PAGE 2 OF 2, DOWN 3" BELOW GROUND SURFACE. BURIED OLD BRASS CAP AND 1" IRON PIPE HORIZONTALLY ON SOUTH SIDE OF BRASS DISK. PLACED STONES AROUND THE BRASS DISK. SET TWO NEW IRON ROD ACCESSORIES AND BLAZED AND SCRIBED TWO NEW BEARING TREES AS SHOWN ON PAGE 2 OF 2. SET 6 FOOT ORANGE CARSONITE "SURVEY MARKER" POST 1 FOOT NORTH OF BRASS DISK. FOUND RED FIBERGLASS POST 11" EAST OF BRASS DISK.



FOUND 2-1/2" BRASS CAP, FLUSH WITH GROUND, AT NORTH 1/4 SECTION 2, T15S, R7W, AS PER COR. REST. 157540700R1 MARKED "T14S R7W 1/4 S2 T15S R7W LS1084 1995". BRASS CAP IS ON THE WEST SIDE OF A GRAVEL ROAD

MONUMENT DETAIL

LEGEND



3-1/4" BRASS DISK

- SET 5/8" X 30" REBAR WITH PLASTIC CAP
- YPC YELLOW PLASTIC CAP MARKED "BENTON COUNTY SURVEYOR"
- RPC RED PLASTIC CAP MARKED "BENTON COUNTY SURVEYOR"
- (C) MEASUREMENT TO CENTER
- ⊙ GOVERNMENT MONUMENT SET AS SHOWN
- GOVERNMENT MONUMENT FOUND AS SHOWN
- COR.REST. CORNER RESTORATION
- GLO GENERAL LAND OFFICE
- B.T. BEARING TREE
- BEARING TREE STUMP AS NOTED
- ☁ BEARING TREE AS NOTED

NEW ACCESSORIES:

1. SET REBAR (SEE LEGEND) N61°39'51"E, 25.52 FEET AND 6 INCHES BELOW GROUND LEVEL.
2. SET REBAR (SEE LEGEND) N41°35'54"W, 29.91 FEET AND 4 INCHES BELOW GROUND LEVEL.
3. CEDAR 16" DIA BEARS S55°59'W, 13.86 FEET TO CENTER, FACE SCRIBED "XBT". SET ALUMINUM NAIL AND PLASTIC WASHER IN NORTHWESTERLY BASE FOR DISTANCE MEASUREMENT.
4. CEDAR 13" DIA BEARS S39°21'E, 19.82 FEET TO CENTER, FACE SCRIBED "XBT". SET ALUMINUM NAIL AND PLASTIC WASHER IN NORTHEASTERLY BASE FOR DISTANCE MEASUREMENT.

NOTES:

COMPASS DECLINATION IS 15' EAST. ALL MEASURED DISTANCES AND BEARINGS ARE TO THE CENTER OF THE OBJECT, UNLESS OTHERWISE NOTED. ALL LIVE BEARING TREES ARE PAINTED AND HAVE A B.T. TAG ATTACHED, FACING THE CORNER UNLESS OTHERWISE NOTED. ALL NEW BEARING TREES HAVE A PLASTIC WASHER (STAMPED "SURVEY MARKER DO NOT REMOVE") ATTACHED BY AN ALUMINUM NAIL TO THE SIDE CENTER OF THE TREE FOR DISTANCE MEASUREMENT, UNLESS OTHERWISE NOTED.

THIS RESTORATION WAS PERFORMED AT THE DIRECTION AND APPROVAL OF THE BENTON COUNTY SURVEYOR *[Signature]*

REGISTERED
PROFESSIONAL
LAND SURVEYOR

FIRM/AGENCY: BENTON COUNTY SURVEYOR'S OFFICE
 ADDRESS: 360 S.W. AVERY AVE., CORVALLIS, OR 97333; PH. 541-766-6821
 PRESENT: DAVID L. MALONE, P.L.S., AND IAN T. MCGUIRE, P.L.S.
 EQUIPMENT: NIKON NIVO3.C WITH SURVEY PRO ONBOARD.

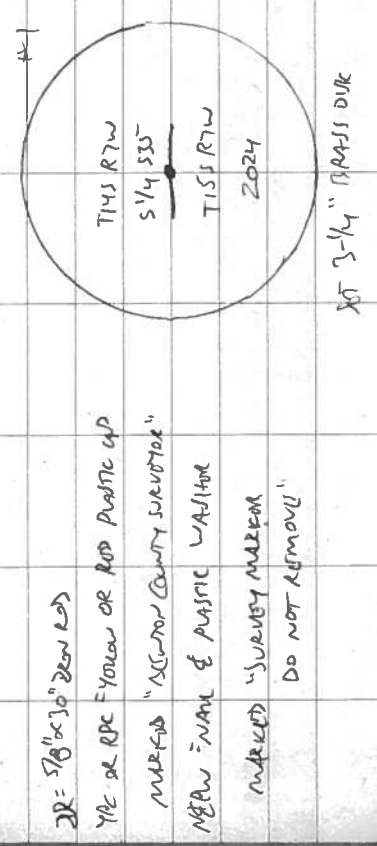
6/17/24 David L. Malone

OREGON
JANUARY 12, 1999
DAVID L. MALONE
51523

RENEWAL DATE: 12/31/24

147540100
 T145 R7W S14 S35
 T755 R7W

FD 1" DP w/ 2-1/2" BRASS CAP UP 1" ABOVE
 GROUND SURFACE, 3' LONG w/ FLARED END.
 FD ROD FIVE INCHES POST 11" EAST.
 RE-POSITIONED AND REMOVED 1" ROW PIVOT
 AND IN SAND HORIZONTAL POSITION
 SET 2" x 31-1/2" GALVANIZED 1" ROW PIVOT
 w/ 3-1/4" BRASS DISK CONNECTED IN
 THE TOP, DOWN 3" BELOW GROUND, SURFACED
 OLD PIVOT HORIZONTAL ON SOUTH SIDE
 OF BRASS CAP, PLANTS STAMPS AROUND
 BRASS CAP, SET 2" ROW 1" ROW ROD
 ACCESSORIES & ISLAND AND SURFACED
 2" ROW MARKING CROSS, SET 6' ORANGE
 CARBONITE "SURVEY MARKER" POST 1'
 NORTH OF BRASS CAP. FD N 1/4 S2, T155 R7W, AND THIS
 FOR NEIGHBOR (MORRIS), FD 16A3 WEST STUMP & 1940 WEST STUMP.



W. DEN. CUMME
 MICH. MINE & MINERAL SURVEY ASSOCIATION

6/10/24
 D. MAND
 I. MCCUIRD

② FD 2-1/2" BRASS CAP WITH GROUND

AT N 1/4 SECTION 2, T155 R7W
 AT PINE CREEK, DIST. 157540100-1
 MARKED THIS ROW 1/4 S2 T155 R7W
 151084 1945"

1940
 NO SURVEY MARKERS
 EITHER SIDE GROUND
 OUT OF STUMP

1940
 6" 1940 42" FIRE
 STUMP w/ POSSIBLE
 BOTTOM OF 1940

1940
 6" 1940 42" FIRE
 STUMP w/ POSSIBLE
 BOTTOM OF 1940

1940
 6" 1940 42" FIRE
 STUMP w/ POSSIBLE
 BOTTOM OF 1940

1940
 6" 1940 42" FIRE
 STUMP w/ POSSIBLE
 BOTTOM OF 1940

1940
 6" 1940 42" FIRE
 STUMP w/ POSSIBLE
 BOTTOM OF 1940

1940
 6" 1940 42" FIRE
 STUMP w/ POSSIBLE
 BOTTOM OF 1940

1940
 6" 1940 42" FIRE
 STUMP w/ POSSIBLE
 BOTTOM OF 1940

1940
 6" 1940 42" FIRE
 STUMP w/ POSSIBLE
 BOTTOM OF 1940

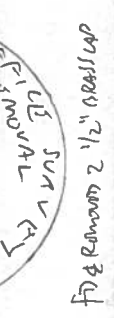
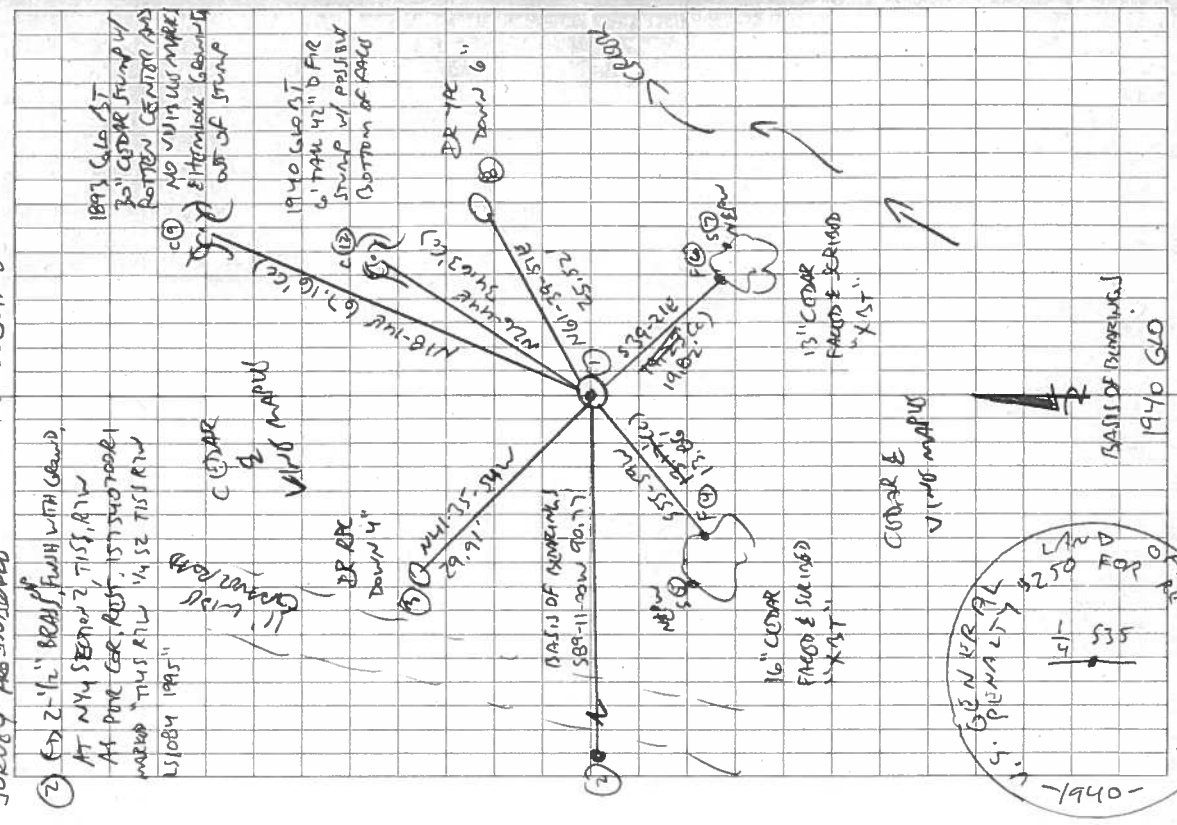
1940
 6" 1940 42" FIRE
 STUMP w/ POSSIBLE
 BOTTOM OF 1940

1940
 6" 1940 42" FIRE
 STUMP w/ POSSIBLE
 BOTTOM OF 1940

1940
 6" 1940 42" FIRE
 STUMP w/ POSSIBLE
 BOTTOM OF 1940

1940
 6" 1940 42" FIRE
 STUMP w/ POSSIBLE
 BOTTOM OF 1940

1940
 6" 1940 42" FIRE
 STUMP w/ POSSIBLE
 BOTTOM OF 1940



FD & REMOVED 2 1/2" BRASS CAP