

147640200

CORNER FILE TRACKING

S:\Survey Corners\CORNERS\Templates\Filetrac2.doc

10/04/2010

CORNER NUMBER
147640200

STEP	HISTORY()	RESTORATION()
Form Prepared, DB	10/17/2011	11/20/2011
Field Inspection, DB	11/09/2011	11/09/2011
Finish index (count unit)	11/09/2011	11/09/2011
Counter Index	11/16/2011	11/16/2011
GIS Index Form	12/05/11	12/05/11
Checked, DB	12/02/11	12/02/11
Form Edited, DB	12/05/11	12/05/11
Form Signed, DB	12/05/11	12/05/11
Authorize Payment, DB	—	—
Archive Digital Files	12/05/11	12/05/11
Collect Documents	12/05/11	12/05/11
PDF File	12/05/11	12/05/11
Copy For Filming	12/05/11	12/05/11
Scanned (pdf to laserfiche)	12/05/11	12/05/11
Filmed (Archived), DB		
Filed, DB		

(DB) = Entry needed in database (Access).

COMMENTS:

DATE 10/17/2011TOWNSHIP 14 SOUTH, RANGE 7 WEST, WILLAMETTE MERIDIAN; SECTION 25 CORNER SOUTH 1/4DONATION LAND CLAIM NONE CORNER N/A**COMMON CORNER(S):**

NORTH 1/4 SECTION 36

RECORDS (INFORMATION IN BOLD ITALICS IS COUNTY STAFFS' INTERPRETATION OF THE RECORD)

BASED ON EXTENSIVE RESEARCH AND RECOVERY OF EVIDENCE, THIS OFFICE HAS DETERMINED THAT MOST GENERAL LAND OFFICE SURVEYORS MEASURED TO THE FACE OF BEARING TREES.

- [01] GENERAL LAND OFFICE (GLO) NOTES BY GEORGE MERCER, D.S., DATED JANUARY 18, 1878. *SET POST FROM WHICH A CEDAR 12" DIA BEARS N88°W, 23 LINKS (15.18 FEET); A CEDAR 14" DIA BEARS S10°E, 29 LINKS (19.14 FEET).*
- [02] BENTON COUNTY SURVEY NO. 1437 (OLD NO. 336) FIELD NOTES (FIELD BOOK 109, PAGES 91-101) BY B. WILKES, D.C.S., DATED APRIL 18, 1941. *REESTABLISHED MID DISTANCE BETWEEN SECTION CORNERS. CORNER IN WATER. WITNESS CORNER SAND STONE 3" X 12" X 30" WITH "+" ON TOP AND "CSWC" ON NORTH FACE. STONE APPEARS TO HAVE BEEN SET 55.06 FEET SOUTH AND 20 FEET EAST OF TRUE CORNER, AND WAS THEN MOVED AS REFLECTED IN RECORD [03] BELOW.*
- [03] BENTON COUNTY CORNER RESTORATION BOOK NO. 1, PAGE 228, BY B. WILKES, D.C.S., NO DATE GIVEN. *WITNESS CORNER TO TRUE CORNER 40.0 FEET SOUTH OF TRUE CORNER. WITNESS CORNER ESTABLISHED ON PROPORTIONAL DISTANCE AND 40.0 FEET SOUTH OF TRUE LINE BETWEEN SECTION CORNERS. SET STONE 3" X 12" X 30" WITH "+" ON TOP AND "WC" ON NORTH FACE. A CEDAR 30" DIA BEARS S72-3/4°E, 70.1 FEET (1.062 CHAINS); A FIR 10" DIA BEARS S12-3/4°E, 47.3 FEET (0.716 CHAINS). TRUE POINT COMES IN ALSEA RIVER.*
- [04] BENTON COUNTY CORNER RESTORATION NO. 2595. *TRANSCRIBED FROM RECORD [03] AND MAY CONTAIN ERRORS AND/OR OMISSIONS.*
- [05] BENTON COUNTY MAP NO. 14-7-00003 BY BURT WILKES, D.C.S., DATED APRIL 1941 AND W. C. GALLOWAY, C.S., DATED JUNE 3, 1943. *WITNESS CORNER 0.606 CHAINS (40.00 FEET) SOUTH AT RIGHT ANGLES. STONE 3" X 12" X 30" WITH "+" ON TOP AND "CS" ON NORTH FACE. A CEDAR 30" DIA BEARS S72-3/4°E, 1.062 CHAINS (70.09 FEET); A FIR 10" DIA BEARS S12-3/4°E, 0.716 CHAINS (47.26 FEET).*
- [06] BENTON COUNTY SURVEY NO. 8894 BY JIM S. PETERSON, P.L.S., DATED OCTOBER 10, 1994. *WITNESS CORNER TO 1/4 CORNER SECTIONS 25 & 36. FOUND BROKEN STONE (BOTTOM HALF OF GALLOWAY 3X12X30 STONE, GHC 14-7 #3) 10" BELOW SURFACE. STONE IS STILL VERTICAL AND IN GOOD POSITION. FOUND 24" FIR UPROOT WITH HEALED FACE (S12-3/4°E, 0.716 CHAINS); FOUND A 50" CEDAR WITH HEALED FACE (S72-3/4°E, 1.062 CHAINS). SET A 26" FIR SOUTH 55.3 FEET MARKED "X BT"; A 12" ALDER N71°E, 38.6 FEET MARKED "X BT" IN BARK.*
- [07] PAGE 7 OF FIELD NOTES FOR BENTON COUNTY SURVEY 8894 PROVIDED TO THE BENTON COUNTY SURVEYOR'S OFFICE BY JIM S. PETERSON, P.L.S., ON NOVEMBER 3, 2011. *FOUND GALLOWAY STONE WITH TOP HALF BROKEN OFF AND MISSING. STONE IS IN UPRIGHT POSITION AND CHECKS GOOD WITH BT'S. REPLACED STONE WITH 5/8" X 30" IRON ROD WITH PLASTIC CAP (LS 1084). BT'S FOUND: 24" FIR UPROOT (S12-3/4°E, 0.716 CHAINS) HEALED FACE; 50" CEDAR (S72-3/4°E, 1.062 CHAINS) HEALED FACE. BT'S SET: 26" FIR, SOUTH, 55.3 FEET, MARKED "X BT"; 12" ALDER, N71°E, 38.6 FEET, MARKED "X BT" IN THE BARK. LAID FOUND STONE ALONGSIDE ROD.*

NOTES:

THIS IS A MICROSOFT WORD 2003 DOCUMENT NAMED "47640200" CREATED FROM A BOILER PLATE DOCUMENT NAMED "HISTORY", WHICH HAS A STYLESHEET NAMED "CORNER" ATTACHED TO IT.

FIRM/AGENCY: BENTON COUNTY SURVEYOR'S OFFICE
ADDRESS: 360 S.W. AVERY AVE. CORVALLIS OR 97333; PH. 766-6821
RESEARCH BY: DAVID L. MALONE, P.L.S.
DATA ENTRY BY: SAME

BENTON COUNTY CORNER RESTORATION FORM, PAGE 1 OF 2, 147640200R2**SEE CORNER HISTORY FORM FOR RECORDS ETC.**

CORNER RESTORATION FIELD BOOK NUMBER 29 PAGE(S) 26 DATE 11/30/2011
TOWNSHIP 14 SOUTH, RANGE 7 WEST, WILLAMETTE MERIDIAN; SECTION 25 CORNER SOUTH 1/4
DONATION LAND CLAIM NONE CORNER N/A
CONDITION REPORT ; REFERENCED OUT ; RENEWED XX; SURVEYED IN

LOCATION AND COMMENTS:

WITNESS CORNER IS LOCATED ON FLAT GROUND SOUTH OF THE SOUTH FORK OF THE ALSEA RIVER IN AN AREA OF HARDWOODS, CONIFER AND BRUSH. TO REACH WITNESS CORNER FROM THE INTERSECTION OF BELLFOUNTAIN ROAD AND ALPINE ROAD, DRIVE WESTERLY ON ALPINE ROAD, CONTINUING WESTERLY WHEN IT BECOMES BLM SOUTH FORK ROAD, FOR 9.51 MILES TO A LOCATION TAG ON A 28" D. FIR ON THE RIGHT SIDE OF THE ROAD, WHICH IS ABOUT 670 FEET S47°51'W OF THE WITNESS CORNER. WITNESS CORNER IS POOR FOR PREMARKING AND GPS CONTROL.

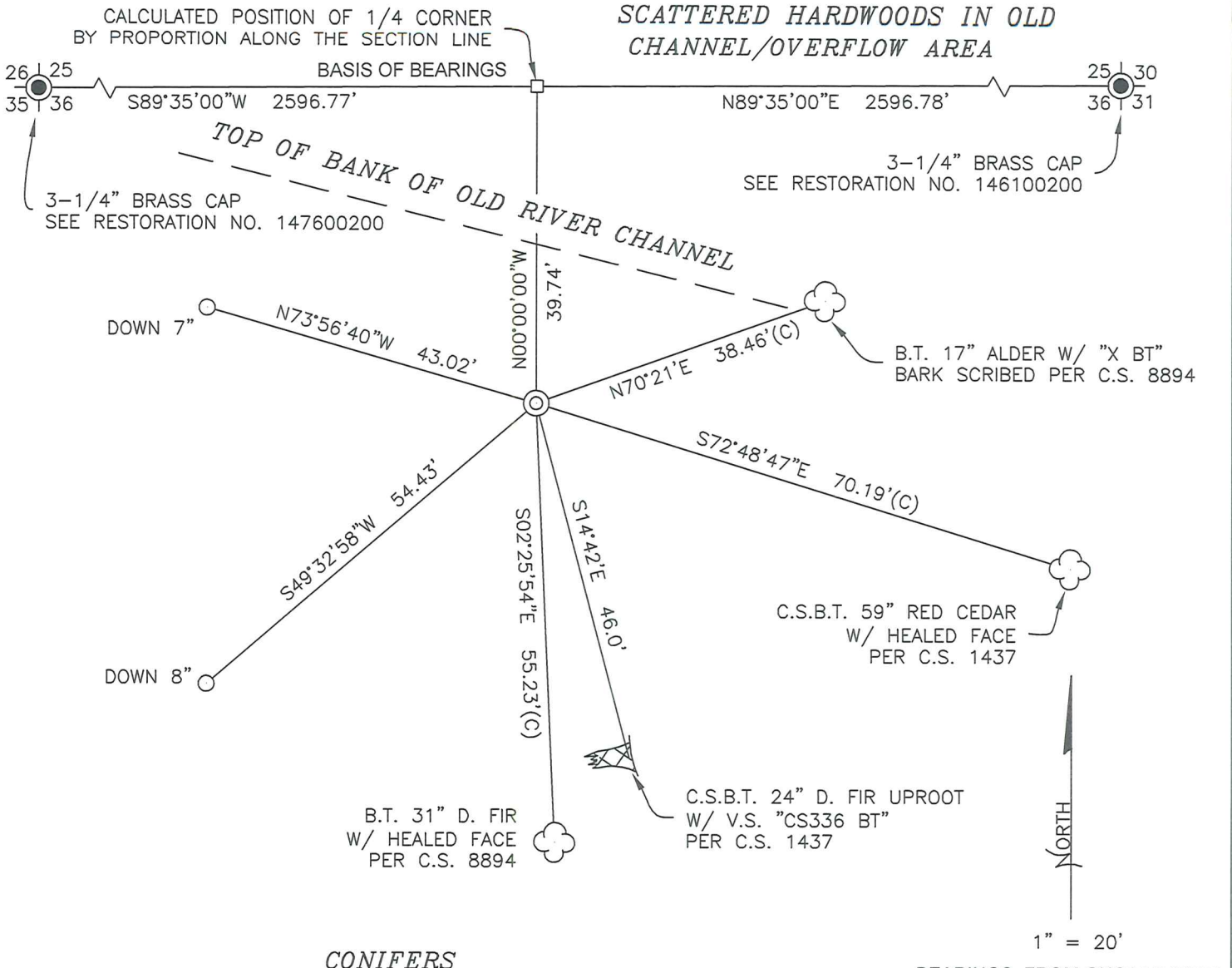
MONUMENTS AND ACCESSORIES FOUND (CONDITION AND SOURCE):

1. FOUND 5/8" IRON ROD WITH YELLOW PLASTIC CAP MARKED "LS 1084" FLUSH WITH GROUND FOR WITNESS CORNER. FOUND STONE BURIED ALONG NORTH SIDE OF 5/8" IRON ROD AND RED T-POST STICKING 3-1/2 FEET OUT OF THE GROUND 0.5 FEET WEST OF 5/8" IRON ROD.
(SET WITNESS CORNER SAND STONE 3" X 12" X 30" WITH "+" ON TOP AND "CSWC" ON NORTH FACE PER RECORD [02]).
(WITNESS CORNER TO TRUE CORNER 40.0 FEET SOUTH OF TRUE CORNER. SET STONE 3" X 12" X 30" WITH "+" ON TOP AND "WC" ON NORTH FACE PER RECORD [03]).
(WITNESS CORNER 0.606 CHAINS [40.00 FEET] SOUTH AT RIGHT ANGLES. STONE 3" X 12" X 30" WITH "+" ON TOP AND "CS" ON NORTH FACE PER RECORD [05]).
(FOUND BROKEN STONE [BOTTOM HALF OF GALLOWAY 3" X 12" X 30" STONE] 10" BELOW SURFACE STILL VERTICAL AND IN GOOD POSITION PER RECORD [06]).
(FOUND GALLOWAY STONE WITH TOP HALF BROKEN OFF AND MISSING. STONE IS IN UPRIGHT POSITION AND CHECKS GOOD WITH BT'S. REPLACED STONE WITH 5/8" X 30" IRON ROD WITH PLASTIC CAP [LS 1084]. LAID FOUND STONE ALONGSIDE ROD PER RECORD [07]).
2. FOUND 3-1/4" BRASS CAP AT THE SOUTHEAST CORNER OF SECTION 25, N00°00'00"W, 39.74 FEET AND N89°35'00"E, 2596.78 FEET. SEE RESTORATION NO. 146100200. BASIS OF BEARINGS FOR THIS RESTORATION IS BETWEEN THE SOUTHEAST CORNER OF SECTION 25 AND THE SOUTHWEST CORNER OF SECTION 25 AS PER GHC 14-7-00003.
(NORTH, 40.00 FEET AND N89°35'E, 2596.64 FEET PER RECORD [05]).
3. FOUND 3-1/4" BRASS CAP AT THE SOUTHWEST CORNER OF SECTION 25, N00°00'00"W, 39.74 FEET AND S89°35'00"W, 2596.77 FEET. SEE RESTORATION NO. 147600200.
(NORTH, 40.00 FEET AND S89°35'W, 2596.57 FEET PER RECORD [05]).
4. FOUND 31" D. FIR WITH HEALED FACE, S02°25'54"E, 55.23 FEET TO CENTER. SET ALUMINUM NAIL AND PLASTIC WASHER IN EASTERLY BASE FOR DISTANCE MEASUREMENT.
(26" FIR, SOUTH, 55.3 FEET MARKED "X BT" PER RECORDS [06] AND [07]).
5. FOUND 59" RED CEDAR WITH HEALED FACE, S72°48'47"E, 70.19 FEET TO CENTER. SET ALUMINUM NAIL AND PLASTIC WASHER IN SOUTHWESTERLY BASE FOR DISTANCE MEASUREMENT.
(MARKED A 30" CEDAR, S72-3/4"E, 70.1 FEET [1.062 CHAINS] PER RECORD [03]).
(30" CEDAR, S72-3/4"E, 1.602 CHAINS [70.09 FEET] PER RECORD [05]).
(50" CEDAR HEALED FACE PER RECORDS [06] AND [07]).
6. FOUND 17" ALDER, N70°21'E, 38.46 FEET TO CENTER, WITH VISIBLE BARK SCRIBING "X BT". SET ALUMINUM NAIL AND PLASTIC WASHER IN SOUTHEASTERLY BASE FOR DISTANCE MEASUREMENT.
(12" ALDER, N71°E, 38.6 FEET MARKED "X BT" IN THE BARK PER RECORDS [06] AND [07]).
7. FOUND 24" D. FIR UPROOT, S14°42'E, 46.0 FEET TO APPROXIMATE CENTER OF ROOT HOLE. WE OPENED TO VISIBLE SCRIBING "CS336 BT".
(MARKED A 10" FIR, S12-3/4"E, 47.3 FEET [0.716 CHAINS] PER RECORD [03]).
(10" FIR, S12-3/4"E, 0.716 CHAINS [47.26 FEET] PER RECORD [05]).
(24" FIR UPROOT HEALED FACE PER RECORDS [06] AND [07]).

MONUMENT SET (PROCEDURES AND DESCRIPTION):

THE STONE SET AT THE WITNESS CORNER BY B. WILKES WAS ORIGINALLY SET IN A DIFFERENT POSITION ACCORDING TO THE FIELD NOTES (FIELD BOOK 109, PAGES 91-101) FOR C.S. 1437. THE STONE WAS THEN MOVED TO CORRECT AN ERROR IN WILKES' CALCULATIONS. THE CALCULATIONS FOR THAT MOVEMENT WERE NOT SHOWN IN THE FIELD NOTES, BUT THAT MOVEMENT IS EVIDENT WHEN COMPARING THE FIELD NOTES AND THE ORIGINAL BEARING TREE LOCATIONS IN THE FIELD NOTES TO THE CORNER RESTORATION INFORMATION CONTAINED IN BOOK NO. 1, PAGE 228. JIM PETERSON FOUND THE BROKEN BOTTOM PORTION OF THAT WITNESS CORNER STONE AND REPLACED IT WITH A 5/8" IRON ROD AT A POSITION HE FELT BEST PERPETUATED SAID STONE. HAVING SURVEYED THE LENGTH OF THE SECTION LINE, I PROPORTIONED THE POSITION OF THE 1/4 CORNER AND FIND THAT PETERSON'S MONUMENT IS NOT AT RECORD 40.0 FEET FROM THE PROPORTIONED CORNER, BUT IT IS WITHIN A REASONABLE ACCURACY. THE RECORDED BEARING AND DISTANCE FROM THE PROPORTIONED CORNER WOULD HAVE LIKELY BEEN ON THE STONE. I AM HOLDING MY PROPORTIONED POSITION FOR THE 1/4 CORNER AND RECORDING A NEW DISTANCE TO THE WITNESS CORNER, HOLDING PETERSON'S 5/8" IRON ROD FOR THE TRUE WITNESS CORNER POSITION, WHICH COMPARES WELL WITH THE ABOVE ACCESSORIES FOUND. DROVE IRON ROD DOWN 4" AND OVER SAID IRON ROD SET A 2" X 31-1/2" GALVANIZED IRON PIPE WITH A 3-1/4" BRASS DISK CONCRETED IN THE TOP, FLUSH WITH GROUND LEVEL AND MARKED AS SHOWN ON PAGE 2 OF 2. SET A 6 FOOT ORANGE CARSONITE "SURVEY MARKER" POST 1.0 FEET SOUTH OF NEW MONUMENT.

SCATTERED HARDWOODS IN OLD CHANNEL/OVERFLOW AREA

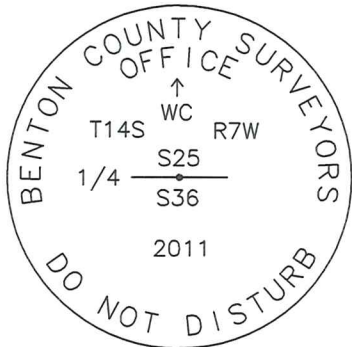


CONIFERS

BEARINGS FROM GHC14-7-00003

MONUMENT DETAIL

LEGEND



3-1/4" BRASS DISK

- SET 5/8" X 30" REBAR WITH YELLOW PLASTIC CAP MARKED "BENTON COUNTY SURVEYOR"
- (C) MEASUREMENT TO CENTER
- GOVERNMENT MONUMENT FOUND AS SHOWN
- ⊙ GOVERNMENT MONUMENT SET AS SHOWN
- CALCULATED POINT NO MONUMENT SET
- C.S. COUNTY SURVEY
- C.S.B.T. COUNTY SURVEYOR'S BEARING TREE
- GHC GALLOWAY HARD COPY MAP
- B.T. BEARING TREE
- ☁ BEARING TREE AS NOTED
- ⚡ BEARING TREE UPROOT AS NOTED

NEW ACCESSORIES:

1. SET REBAR (SEE LEGEND) N73°56'40"W, 43.02 FEET AND 7" BELOW GROUND LEVEL.
2. SET REBAR (SEE LEGEND) S49°32'58"W, 54.43 FEET AND 8" BELOW GROUND LEVEL.

NOTES:

COMPASS DECLINATION IS 20° EAST. ALL MEASURED DISTANCES AND BEARINGS ARE TO THE CENTER OF THE OBJECT, UNLESS OTHERWISE NOTED. ALL BEARING TREES ARE PAINTED AND HAVE A B.T. TAG ATTACHED, FACING THE CORNER UNLESS OTHERWISE NOTED. ALL NEW BEARING TREES HAVE A PLASTIC WASHER (STAMPED "SURVEYOR MARKER DO NOT REMOVE") ATTACHED BY AN ALUMINUM NAIL TO THE FACE, BELOW THE "BT" FOR DISTANCE AND ANGLE MEASUREMENT UNLESS OTHERWISE NOTED. THE DRAWING IS FROM AUTOCAD RELEASE 2010.

THIS RESTORATION WAS PERFORMED AT THE DIRECTION AND APPROVAL OF THE BENTON COUNTY SURVEYOR *Jen*

REGISTERED PROFESSIONAL LAND SURVEYOR

12-05-2011 *David L. Malone*

FIRM/AGENCY: BENTON COUNTY SURVEYOR'S OFFICE
 ADDRESS: 360 S.W. AVERY AVE. CORVALLIS, OR. 97333; PH. 766-6821
 PRESENT: DAVID L. MALONE, P.L.S. AND BERNIE ALTENBACH, SURVEY TECH.
 EQUIPMENT: NIKON NIVO3.C AND SURVEY PRO ONBOARD

OREGON
 JANUARY 12, 1999
 DAVID L. MALONE
 51523

RENEWAL DATE: 12/31/12

C.S. 79

by W.C. Galloway
Adrian Scits
Aug. 1940N.W. Corner of Jacob Halter D.L.C. 73 T.10 S. R. 4 W.
Set a 7/8" Steel rod proportional distance on sec. line at north fence
for corner and a 1" steel rod at south road fence S. 0° 20' E. .53

C.S. #136

by F.M. Wilkes
J. Slater and
Elmer Maxfield
Apr. 30, 1913N.E. Corner of Alfred Witham Cl. 55 T. 11 S. R. 5 W.
Set a 1/2" Iron rod
Oak 29" S. 73° W. .88 chs. Std.
" 15" N. 66° E. .63 " "
" 18" N. 15 1/2° W. .59 " "

C.S. # 199

Burt Wilkes
R.W. McBride
R. Underwood
(Recording Only)Cor. Secs 9, 10, 15 & 16 T. 11 S., R. 7 W. March 20, 1941
Found 1/2" iron pipe at West face of large Bolt with 3" oct. head - Used Bolt as cor.
None of original trees standing.
Monument is in Door Yard S.W. of S.W. corner of HouseW.C. Galloway
Cs. 336

Sept. 19, 1938

S.W. Corner John W. Starr D.L.C No. 54 - T. 14 S. R. 6 W.
Set 1 1/4" Galv. Pipe for corner from which
A Fir. 50" in dia. bears N. 87° W. .45 Lks.
" " 50" " " " N. 50° E. 16" Burned out - Down
Mark " Maple 20" " " " S. 56° E. 16.8" Nail on N. sideBurt Wilkes
C.S. 336Witness
Ray W. McBrideCor. Secs. 30 & 31 - of 6 W and 25 & 36 T. 14 S. R. 7 W. Mar 10, 1941
Set 1/2" x 30" Galv. Pipe in original stake hole
All three fir B.T.s standing - Cedar in sec. 31 cut about 8' highSame as
above.1/4 Sec. Cor. Secs. 31 & 36, T. 14 S. R. 6 & 7 W. Mar. 11, 1941
Set 1/2" x 30" Galv. Pipe, from which
A Fir 12 (Now 24) bears S. 37° E. 13.86' = .21 links Std.
Mark Fir 28" " " N. 30° W. 18.2' = 27.6 "
" " Stamp 36" " " N. 37° E. 25.08' = 38.0 "1/4 sec. Cor.
Ralph McBryde
Bob Underwood1/4 sec. Cor. Secs. 25 & 30 - T. 14 S. R. 6 & 7 W. April 24, 1941
Set 1/2" x 30" Galv. Pipe at Original Hole.
Both B.T.s. standing & agree - S.W. Tree dead.
Mark. Hemlock. 16" in dia. Bears S. 77 1/2° W 58.9' Hk to slope L = 56.47' = 85.6 linksB. Wilkes
Witness
Geo Baer
Bob Underwood1/4 sec cor. between Secs. 25 and 36 - ¹⁴⁻⁷ W.C. to true corner. 40.0' S. of True Cor.
Set stone 3" x 12" x 30" + on top. W.C. on N. face } This Cor. was established on
Cedar 30" in dia. Bears S. 72 1/4° E. 70.1' = 1.062 } proportional dist. and 40.0' S. of
Fir 10" " " " S. 12 1/4° E. 47.3' = .716 } true line between sec. cors.
True point comes in Alsea River.~~Same~~ B.W.
Bob Underwood
Ray McBride
Ralph McBrydeCor. to Secs. 25, 26, 35 & 36. 14-7 April 19, 1941
Set stone 3" x 8" x 15" Marked + on top C.S. on face Orig Hole.
Cedar. (Alder in 1 set notes) 10" (14") S. 54° E. 104.6' Std. = 1.585'
Fir 40 (49' ins in dia bears N. 61 1/2° E. 38.3' ^{slope} No Mks. .580'
Mark Fir 34" 3 1/4" dia. bears S. 88 1/2° W 123.3' 1.868
" Cedar 34" " " " N. 2° 15' W. 93.46' - 8° slope L = 91.56' = 1.387'

$\frac{1}{4}$ -Section corner between sections 25 and 36, Twp. 14-7

2595

Reestablishment by W. C. Galloway

April 19, 1941

W. C. to true corner and 40.0 chains S. of true corner.

Set stone 3" x 12" x 30" + on top, W. C. on N. face

Cedar 30" in diam bears S $72\frac{3}{4}^{\circ}$ E.

1.062 chains

Fir 10" in diam bears S $12\frac{3}{4}^{\circ}$ E

.716 chains

True point comes in Alsea River

Witness Bob Underwood and Ralph McBryde

147640200

REMANUQUITING 1/4 TO THE RW

WITNESS CORNER

FD 5/8" DR w/ 1/2" 25 1084" FLUSH w/ GROUND

PERE C.S. 8894, STONE PAVED AREA, NORTH SIDE.

RED T-POST 6" WEST, 3 1/2" DIA. HEAD 5/8" DR FOR

CORNER POSITION, OVER ROAD SET 2" x 3 1/2" GTP. W/

3 1/4" BRASS DISK CONC. IN TOP FLUSH w/ GROUND

AND MARKED AS SHOWN. FIRST DRIVE STOVE DOWN 4"

SET TO ORANGE CASIMITE "SUNNY MATCHBOX" POST 1"

SOUND OF NEW MOUNTMENT, FD TWO RST'S PERE

CS 8894, FD C.S. AT CEDAR STANDING w/ HOLLOW FACE,

FD C.S. AT: THE UPRIGHT. SET TWO IRON RODS AS

ACCESSORIES w/ VPC "BEHIND COUNTRY SURVEYOR" BASIS

OF BOUNDARIES THE SOUTH END, PERE C.S. 8894.

LOCATION THIS OR TRAIL ON DLM SOUTH PARK ROAD

S 47-51 W N 670' FROM CORNER ON 20" D.F. IR

REMOVED ON 1/2/2011 AFTER SURVEYING

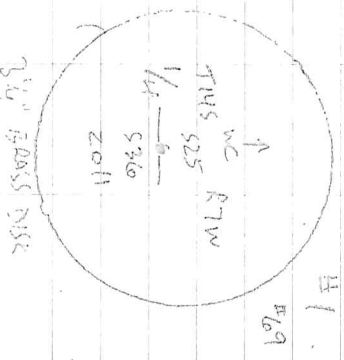
SW & SE STATION CORNER OF SECTION 25.

USED SECTIONS LINE AS BASIS OF BOUNDARIES

PERE C.S. 8894 14-7-00003.

REMOVED ACCESSORIES USING NEW

BASIS OF BOUNDARIES



11/09/2011
 D. MATHIAS
 B. ATTENDACH
 11/09/2011
 45° C. 24.8 in H
 WILCOX N110 3.1c
 SURVEY PRO

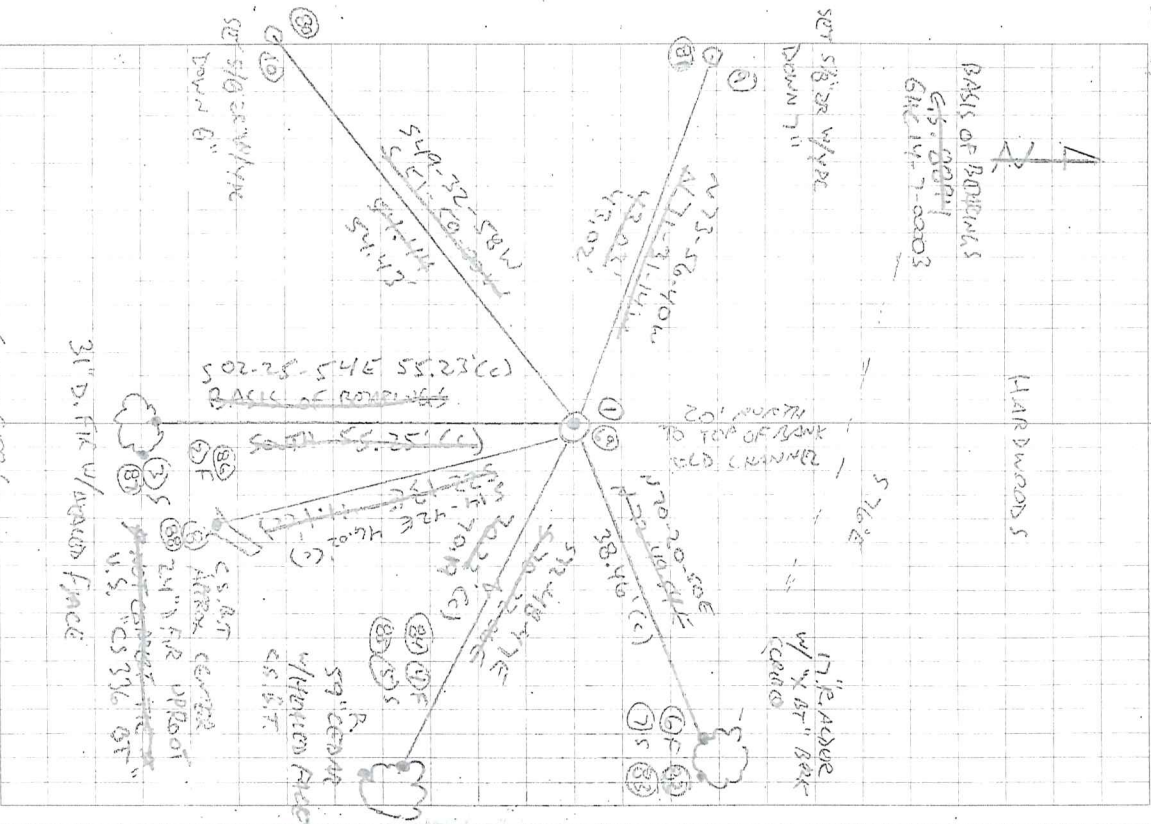
29/26

1

HARDWOODS

BASIS OF BOUNDARIES
 C.S. 8894
 GAC 14-7-00003

SET 5/8" DR W/ VPC
 DOWN 7"



CONIFERS

DRAWING NUMBER
8894

LAND HOLD CORPORATION • FIVE CALIFORNIA
NUMBER BY NUMBER SURVEY

DRAWING NUMBER

LAND HOLD CORPORATION • FIVE CALIFORNIA
NUMBER BY NUMBER SURVEY

DRAWING NUMBER

LAND HOLD CORPORATION • FIVE CALIFORNIA
NUMBER BY NUMBER SURVEY

DRAWING NUMBER
8894

LAND HOLD CORPORATION • FIVE CALIFORNIA
NUMBER BY NUMBER SURVEY

RECORD OF SURVEY
for **SWANSON-SUPERIOR FOREST PRODUCTS, INC.**
in SECTION 36, T14S, R7W, W.M.
BENTON COUNTY, OREGON
OCTOBER 10, 1994

Benton County
Surveyor's Office

C.S. FILE NO. 8894
FILING DATE 12-17-1994
FILE SIZE 18"x24"



MARRATIME

The purpose of this survey is to establish the center of Section 15 and to mark the boundary lines between adjoining landowners. Monuments found as per GHC 14-7 # 3 (See Corner Notes), 1940 GLO Resurvey (See Corner Notes), 1940 GLO Resurvey (See Corner Notes), BLM Resurvey (1/4 Corner Sections 35 and 36) were held as control for this survey.

The Witness Corner to the 1/4 Corner Sections 25 & 36 was held as control for this survey. The Witness Corner to the 1/4 Corner Sections 25 & 36 was held as control for the North - South centerline of Section 36.

CORNER NOTES

(1) **Witness Corner To 1/4 Corner Sections 25 & 36**
Found broken stone (bottom half of Galloway 3x12x30 stone, GHC 14-7 # 3) 10' below surface. Stone is still vertical and in good position.
BT's found:
24" Fir Uproot, (S12 3/4°E, 0.716 chs.) Healed face
36" Cedar, (S72 3/4°E, 1.062 chs.) Healed face
BT's set:
26" Fir, South, 55.3 ft. Marked: "X BT"
2" x 2" Iron, 114" on old river bank 700' NE of South Fork Rd.
Corner lies on top of old river bank 700' NE of South Fork Rd.

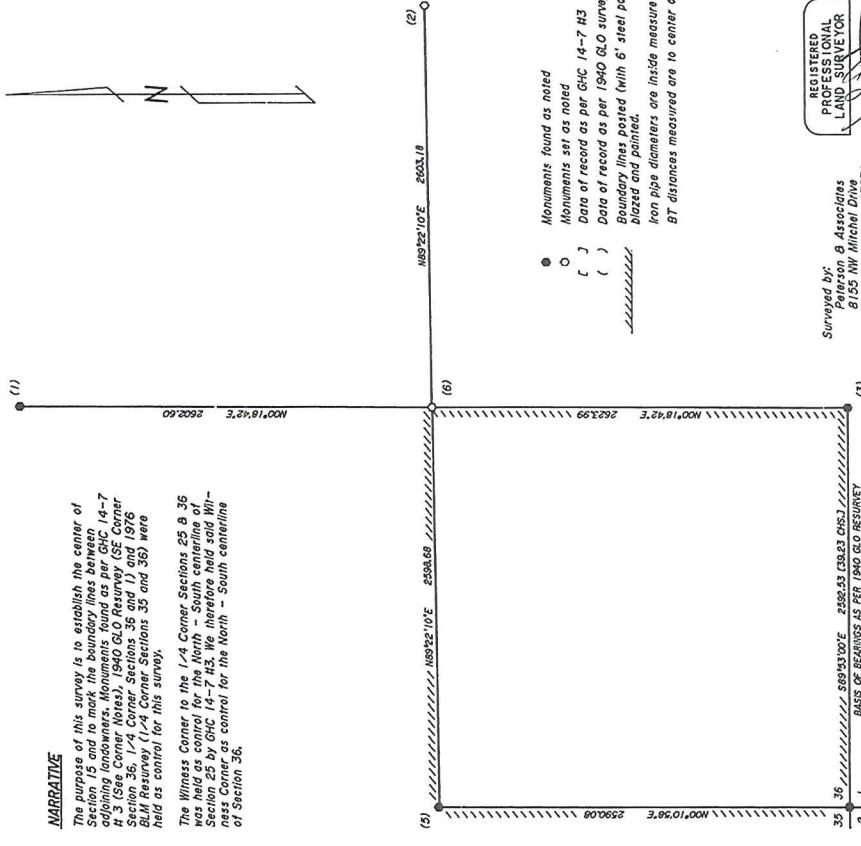
(2) **1/4 Corner Sections 36 & 31**
Galloway pipe destroyed by old car road.
Set 3/4" x 30" iron pipe with plastic cap (LS1084)
BT's found:
26" Fir Stump, (S37°E, 21 lks.) Chopped face
42" Fir Stump, (N30°W, 0.276 chs.) Healed face
36" Fir Stump, (N37°E, 0.380 chs.) No Marks Visible
BT's set:
8" Fir, N22°W, 26.7 ft. Marked: "1/4 S36 BT"
12" Fir, N54°E, 28.8 ft. Marked: "1/4 S31 BT"

(3) **1/4 Corner Sections 36 & 1**
Found 2 1/2" GLO brass cap on 1/2" iron pipe ("1/4 S36 S1 1940")
BT's found:
40" Fir, N18°W, 20.5 ft. (N18°W, 29 lks.) Healed face
48" Fir Stump, (N49 1/2°W, 43 lks.) Scar visible on bark
40" Fir Uproot, (S00 1/4°E, 37 lks.) No marks visible
BT's set:
8" Fir, S64°W, 8.6 ft. Marked: "1/4 S1 BT"
Corner lies on gentle SE slope.

(4) **S1/4 Corner Section 36**
Found 2 1/2" GLO brass cap on 1" iron pipe
(S36°E, S35 S36 SE S1 T14S 1940)
BT's found:
40" Fir, (N30°E, 98 lks.) Healed face
BT's set:
10" Fir, S18°E, 13.2 ft. Marked: "T15S R7W S1 BT"
10" Fir, S70°W, 37.9 ft. Marked: "T15S R7W S2 BT"
Corner lies on gentle SE slope.

(5) **1/4 Corner Sections 35 & 36**
Found 2 1/2" BLM brass cap ("T14S R7W 1/4 S35 S36 1976")
BT's found:
40" Fir, (S73 1/2°W, 87 1/2 lks.) Healed face
40" Fir, (N16°E, 51 lks.) Healed face
Corner is 75' North of a gravel road.

(6) **1/4 Corner Section 36**
Set 5/8" x 30" iron rod with plastic cap (LS1084)
in roots on West side of 36 Cedar.
BT's set:
34" Hemlock, S55°W, 39.5 ft. Marked: "C1/4 S36 BT"
14" Cedar, S51°E, 12.7 ft. Marked: "C1/4 S36 BT"
5/8" x 30" iron rod with plastic cap (LS1084), N82°W, 12.5 ft.
5/8" x 30" iron rod with plastic cap (LS1084), N04°E, 12.5 ft.
Found old wood post (no record) S27°E, 12.0 ft.
Corner lies in flat 200' East and 300' North of dirt roads.



- Monuments found as noted
- Monuments set as noted
- () Data of record as per GHC 14-7 H3
- () Data of record as per 1940 GLO survey
- Boundary lines posted (with 6" steel posts), blazed and painted.
- Iron pipe diameters are inside measure
- BT distances measured are to center of tree

REGISTERED
PROFESSIONAL
LAND SURVEYOR
JIM S. PETERSON
CORVALLIS, OREGON
LICENSE NO. 1004
EXPIRES 12-31-94

Surveyed by:
Peterson & Associates
8155 NW Michael Drive
Corvallis, Oregon 97330
Phone: 757-1794

⑦

W.C. TO N/4 COE S3/4

FOUND GALLOWAY STONE WITH TOP HALF
BROKEN OFF AND MISSING. STONE IS IN
UPRIGHT POSITION AND CHECKS GOOD WITH
BTS. REPLACED STONE WITH 5/8" X 30"
IRON ROD WITH PLASTIC CAP (LS 1084).

BTS FOUND:

- 24" FIR UPROOT, (S12 3/4 E, 716 CHS) HF
- 50" CEDAR, (S72 3/4 E, 1062 CHS) HF

BTS SET:

- 26" FIR, SOUTH, 55 3/4 " X 87"
- 12" ALDER, N71 E, 38 1/2 " X 57" (N BECK)

CORNER LIES ON SOUTH BANK OF OLD
RIVER CHANNEL.

LAID FOUND STONE ALONGSIDE ROD