

CORNER FILE TRACKING

H:\Survey\Corners\Misc\Filetrac.doc

11/23/98

CORNER NUMBER
147837010

STEP	HISTORY()	RESTORATION()
Form Prepared, DB	2/20/04	2/15/04
Field Inspection, DB	2/27/04	2/27/04
Form Checked, DB	3/5/04	3/5/04
Form Edited, DB	3/5/04	3/5/04
Form Signed, DB	3/22/04	3/22/04
Authorize Payment, DB	—	—
Archive Digital Files	✓ 3/24/04	3/24/04
Collect Documents	✓ 3/24/04	3/24/04
Scanned	3/26/04	3/26/04
Copy For Filming	✓ 3/24/04	3/24/04
Filed, DB		
Finish index (count unit)	2/27/04	2/27/04
Filmed (Archived), DB		

(DB) = Entry needed in database (Access).

COMMENTS:

14-7-37

BENTON COUNTY SURVEYORS OFFICE - CORNER RESTORATION

2615

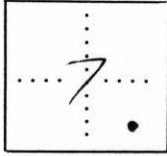
T 14 S, R 7 W, W. B. & M., BENTON COUNTY, OREGON

REPORTED BY Gary T Johnston

SECTION 7 NE corner D.L.C. no. 37

TITLE RPLS 146'7

DATE March 23, 1981



● OFFICIAL CORNER FOUND

○ CORNER SET

D.L.C. CORNER COMMON TO SEC. 7 & IS original post gone set 5/8" X 30" IR DESCRIBE

ADDITIONAL INFORMATION

Set 5/8" IR. off of found bearing trees and set 6" ft white fiberglass post 1" ft North of Iron Rod.

Found the following bearing trees
72" fir S30°W 65 links - now a stump, scribe
9" maple N60°E 17 links - now 24" green tree correct bearing & distance

I painted the bearing trees with yellow paint & will yellow tags

Refer to C.S. #7275

OVER

LEGIBLE MARKS ON BEARING OBJECTS

New BT

CL
37
BT

visible
KIND
SIZE
BEARING
DISTANCE
BT TAG POSTED

young fir

14"

S32°W

39 1/2 ft

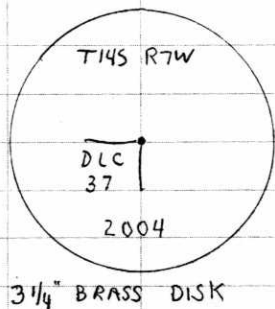
✓

Yellow paint on face

REMONUMENTING NE EDWARD WINKLE DLC 37
T14S R7W ("CANCELLED")

Fd 5/8" I.R. 4" ABOVE GROUND LEVEL FOR
COR. POSITION AS SET PER C.S. 7275.
Fd 70" D. FIR STUMP ^{GL BT} w/US. AS OPENED
PER C.S. 7275. Fd 31" MAPLE GL BT
w/HEALED FACE - NOT OPENED. SET ALUM.
NAIL & PLASTIC WASH IN NW BASE
FOR DIST. MEASUREMENT.
B.T. (14" D.F. S32°W 39.7') PER C.S. 7275
NOT FOUND.

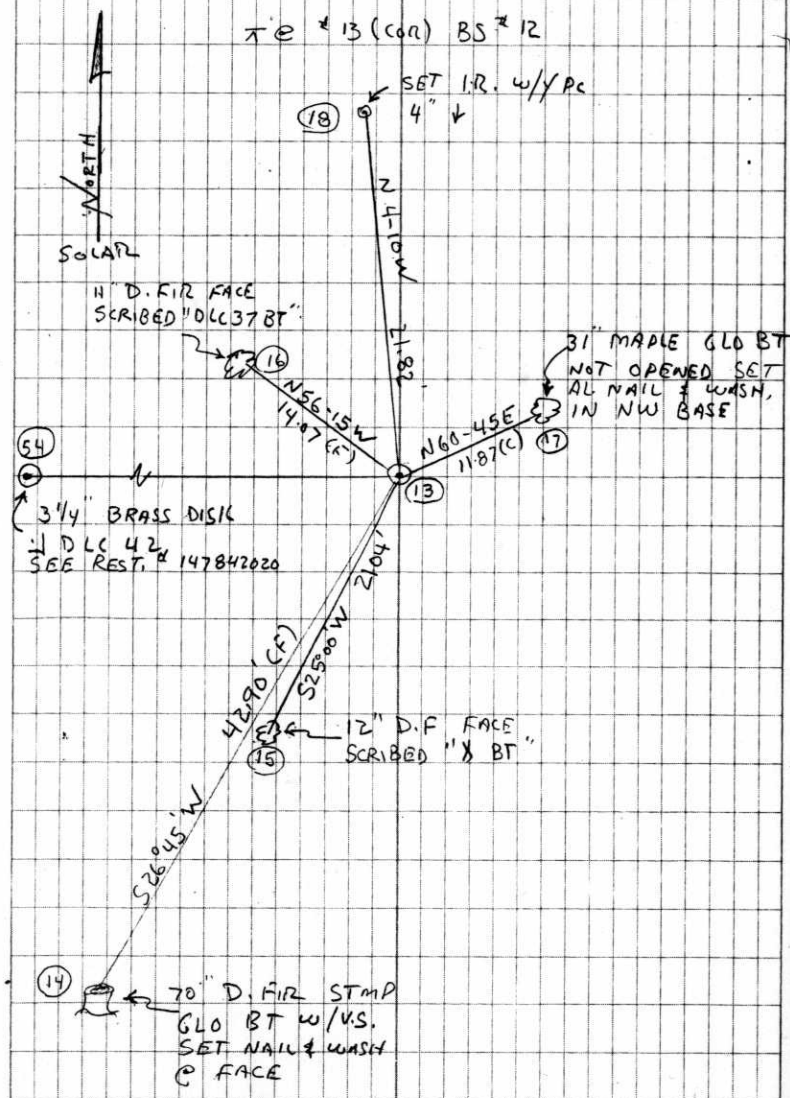
HELD 5/8" I.R. PER C.S. 7275 FOR TRUE
CORNER. LOWERED I.R. TO 2" BELOW GR.
LEVEL. SET 2" x 3 1/2" GIP OVER
5/8" I.R. w/ 3/4" BRASS DISK CONC. IN
TOP 3" MKD AS SHOWN.
SET 6" ORANGE CARSONITE POST 0 1/2" EAST



RAIN, COOL
42°F 29.8"Hg

2-27-04 22/9
D. DEAN
B. ALTENBACH

5' COMPASS/TRANSIT
100' CHAIN



DATE 02/20/2004TOWNSHIP 14 SOUTH, RANGE 7 WEST, WILLAMETTE MERIDIAN; SECTION 7 CORNER NONE
DONATION LAND CLAIM EDWARD WINKLE NO. 37 (CANCALED) CORNER NORTHEAST**COMMON CORNER(S):**

NONE

RECORDS (INFORMATION IN *BOLD ITALICS* IS COUNTY STAFFS' INTERPRETATION OF THE RECORD)

BASED ON EXTENSIVE RESEARCH AND RECOVERY OF EVIDENCE, THIS OFFICE HAS DETERMINED THAT MOST GENERAL LAND OFFICE SURVEYORS MEASURED TO THE FACE OF BEARING TREES.

- [01] GENERAL LAND OFFICE (GLO) NOTES OF THE EDWARD WINKLE DONATION LAND CLAIM (DLC) NO. 37 (CANCALED) BY DENNIS HATHORN, D.S., DATED JULY 11, 1856. *SET POST FOR CORNER FROM WHICH A MAPLE 9" DIA BEARS N60°E, 17 LKS (11.22 FEET). A FIR 72 IN DIA BEARS S30°W, 65 LKS (42.90 FEET).*
- [02] COUNTY SURVEY NO. 7275 BY GARY JOHNSTON, P.L.S., DATED JANUARY 22, 1981 TO MARCH 23, 1981. *NE CORNER DLC NO. 37 FOUND: 72" FIR S30°W, 65 LINKS – NOW A STUMP, SCRIBING VISIBLE. 9" MAPLE N60°E, 17 LINKS – NOW A 24" GREEN TREE CORRECT BEARING AND DISTANCE, DID NOT OPEN. CORNER REMONUMENTED BY DISTANCT/DISTANCE BETWEEN THE TWO BEARING TREES. SET 5/8" X 30" IRON ROD. SET 6 FOOT FIBERGLASS POST 1 FOOT NORTH. MARKED NEW BEARING TREE: 14" D. FIR S32°W, 39.7 FEET MKD "CL37BT".*
- [03] CORNER RESTORATION NO. 2615 BY GARY JOHNSTON, P.L.S., DATED MARCH 23, 1981. *SIMILAR INFORMATION AS RECORD [02].*

NOTES:

THIS IS A MICROSOFT WORD 2000 DOCUMENT NAMED "47837010" CREATED FROM A BOILER PLATE DOCUMENT NAMED "HISTORY", WHICH HAS A STYLESHEET NAMED "CORNER" ATTACHED TO IT.

FIRM/AGENCY: BENTON COUNTY SURVEYOR'S OFFICE
ADDRESS: 360 S.W. AVERY AVE. CORVALLIS OR 97333; PH. 766-6821
RESEARCH BY: DAVID M. DEAN, P.L.S.
DATA ENTRY BY: DEAN

BENTON COUNTY CORNER RESTORATION FORM, PAGE 1 OF 2, 147837010R1
SEE CORNER HISTORY FORM FOR RECORDS ETC.

CORNER RESTORATION FIELD BOOK NUMBER 22 PAGE(S) 9 DATE 02/27/2004
TOWNSHIP 14 SOUTH, RANGE 7 WEST, WILLAMETTE MERIDIAN; SECTION 07 CORNER NONE
DONATION LAND CLAIM EDWARD WINKLE NO. 37 (CANCALED) CORNER NORTHEAST
CONDITION REPORT ; REFERENCED OUT ; RENEWED XX; SURVEYED IN

LOCATION AND COMMENTS:

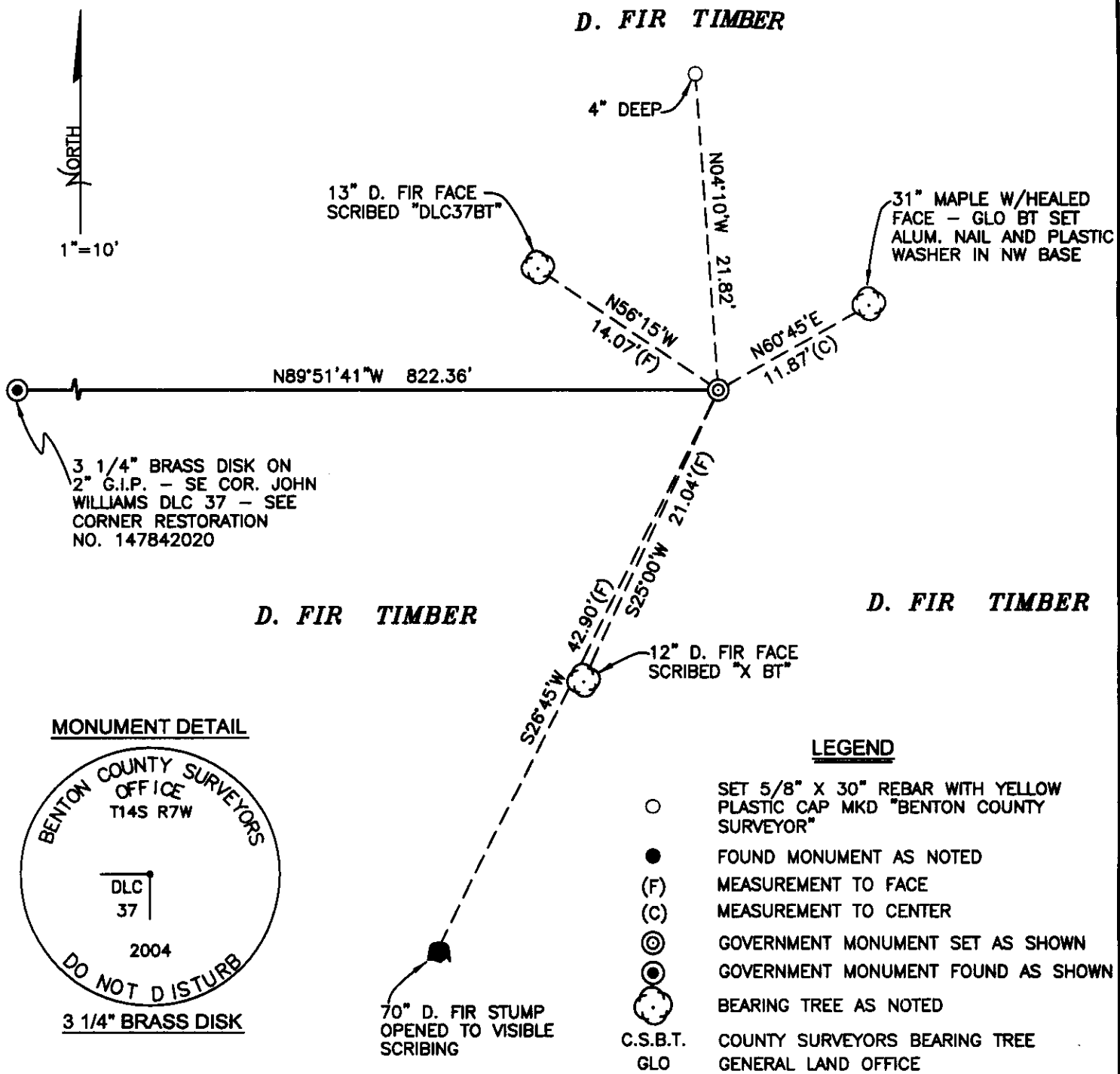
CORNER IS LOCATED ON THE SOUTHWESTERLY SIDE OF A FLAT RIDGE BEARING NORTHEASTERLY AND APPROXIMATELY 100 FEET WEST OF A CREEK BEARING NORTH NORTHWEST. TO REACH CORNER FROM THE JUNCTION OF SOUTH FORK ROAD AND SOUTH MOUNTAIN ROAD, TRAVEL SOUTHELRY AND EASTERLY ON SOUTH MOUNTAIN ROAD FOR 0.27 MILES TO JUNCTION WITH A SKID ROAD ON THE LEFT, BEARING EAST; THEN N59°E, 1100 FEET TO THE SOUTHEAST CORNER OF THE JOHN WILLIAMS DLC NO. 42, OR FOLLOW SKID ROAD EASTERLY AND SOUTHERLY FOR ±1/4 MILE TO SAID SOUTHEAST CORNER OF THE JOHN WILLIAMS DLC NO. 42; THEN EAST ACROSS MOSTLY FLAT TIMBER LAND FOR 820 FEET TO CORNER. CORNER IS POOR FOR PREMARKING AND GPS CONTROL.

MONUMENTS AND ACCESSORIES FOUND (CONDITION AND SOURCE):

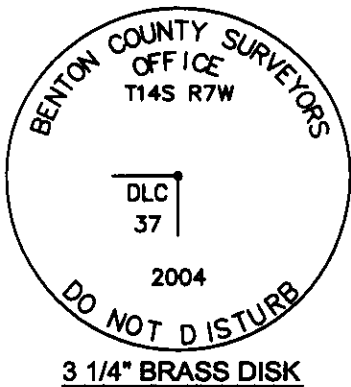
1. FOUND 5/8" IRON ROD, 4" ABOVE GROUND LEVEL FOR CORNER POSITION.
(SET 5/8" X 30" IRON ROD BY DISTANCE/DISTANCE INTERSECTION FROM BOTH GLO BEARING TREES PER RECORD [02]).
2. FOUND 70" D. FIR STUMP, GLO BEARING TREE, PREVIOUSLY OPENED TO VISIBLE SCRIBING, S26°45'W, 42.90 FEET TO ORIGINAL FACE. SET ALUMINUM NAIL AND PLASTIC WASHER AT ORIGINAL FACE.
(A FIR 72 IN DIA BEARS S30°W, 65 LKS (42.90 FEET) PER RECORD [01]).
(72" FIR WITH VISIBLE SCRIBING, S30°W, 65 LKS (42.90 FEET) PER RECORD [02] AND [03]).
3. FOUND 31" MAPLE GLO BEARING TREE WITH HEALED FACE, N60°45'E, 11.87 FEET TO CENTER. SET ALUMINUM NAIL AND PLASTIC WASHER IN NW BASE FOR DISTANCE MEASUREMENT.
(A MAPLE 9" DIA BEARS N60°E, 17 LKS (11.22 FEET) PER RECORD [01]).
(24" MAPLE N60°E, 11.22 FEET PER RECORD [02] AND [03]).

MONUMENT SET (PROCEDURES AND DESCRIPTION):

HELD THE 5/8" IRON ROD AS SET PER C.S. 7275 FOR TRUE CORNER POSITION. LOWERED IRON ROD TO 2" BELOW GROUND LEVEL AND SET A 2" X 31 1/2" GALVANIZED IRON PIPE OVER SAID IRON ROD WITH A 3 1/4" BRASS DISK CONCRETED IN TOP, 3" ABOVE GROUND LEVEL, MARKED AS SHOWN ON PAGE 2 OF 2. SET 6 FOOT ORANGE CARSONITE "SURVEY MARKER" POST 0.5 FEET EAST OF NEW MONUMENT.



MONUMENT DETAIL



LEGEND

- SET 5/8" X 30" REBAR WITH YELLOW PLASTIC CAP MKD "BENTON COUNTY SURVEYOR"
- FOUND MONUMENT AS NOTED
- (F) MEASUREMENT TO FACE
- (C) MEASUREMENT TO CENTER
- ⊙ GOVERNMENT MONUMENT SET AS SHOWN
- ⊙ GOVERNMENT MONUMENT FOUND AS SHOWN
- ⊙ BEARING TREE AS NOTED
- C.S.B.T. COUNTY SURVEYORS BEARING TREE
- GLO GENERAL LAND OFFICE

NEW ACCESSORIES:

1. SET REBAR (SEE LEGEND) N4°10'W, 21.82 FEET AND 4" BELOW GROUND LEVEL.
2. FACE SCRIBED A 12" D. FIR, "X BT", S25°00'W, 21.04 FEET TO FACE (21.6 FEET TO CENTER).
3. FACE SCRIBED A 11" D. FIR, "DLC 37 BT", N56°15'W, 14.07 FEET TO FACE (14.6 FEET TO CENTER).

NOTES:

COMPASS DECLINATION IS 20° EAST. ALL MEASURED DISTANCES AND BEARINGS ARE TO THE CENTER OF THE OBJECT, UNLESS OTHERWISE NOTED. ALL BEARING TREES ARE PAINTED AND HAVE A B.T. TAG ATTACHED, FACING THE CORNER UNLESS OTHERWISE NOTED. ALL NEW BEARING TREES HAVE A PLASTIC WASHER (STAMPED "BENTON COUNTY SURVEYOR CORNER RESTORATION") ATTACHED (BY ALUMINUM NAIL) TO THE FACE, BELOW THE "BT" FOR DISTANCE AND ANGLE MEASUREMENT UNLESS OTHERWISE NOTED. THE DRAWING IS FROM AUTOCAD RELEASE 2002.

THIS RESTORATION WAS PERFORMED AT THE DIRECTION AND APPROVAL OF THE BENTON COUNTY SURVEYOR, RD

REGISTERED
PROFESSIONAL
LAND SURVEYOR

3/22/04 *David M. Dean*

OREGON
JULY 13, 1984
DAVID M. DEAN
2090

RENEWAL DATE: 12/31/05

FIRM/AGENCY: BENTON COUNTY SURVEYOR'S OFFICE
ADDRESS: 360 S.W. AVERY AVE. CORVALLIS OR 97333; PH. 766-6821
PRESENT: DAVID M. DEAN, P.L.S. AND BERNIE ALTENBACH, SURVEY TECH.