

147843040

DATE 08/06/2019TOWNSHIP 14 SOUTH, RANGE 7 WEST, WILLAMETTE MERIDIAN; SECTION 7 CORNER N/A
DONATION LAND CLAIM JACOB HOLGATE NO. 43 CORNER SOUTH-SOUTHEAST**COMMON CORNER(S):**

NONE

RECORDS (INFORMATION IN *BOLD ITALICS* IS COUNTY STAFFS' INTERPRETATION OF THE RECORD)

BASED ON EXTENSIVE RESEARCH AND RECOVERY OF EVIDENCE, THIS OFFICE HAS DETERMINED THAT MOST GENERAL LAND OFFICE SURVEYORS IN BENTON COUNTY MEASURED TO THE FACE OF BEARING TREES.

- [01] GENERAL LAND OFFICE (GLO) NOTES OF THE JACOB HOLGATE DONATION LAND CLAIM (DLC) NO. 43 BY DENNIS HATHORN, D.S., DATED JULY 12, 1856. *SET POST FROM WHICH AN OAK 12" DIA BEARS N48°W, 233 LINKS (153.78 FEET); OAK 12" DIA BEARS N62°E, 177 LINKS (116.82 FEET).*
- [02] BENTON COUNTY SURVEY NO. 1691 (OLD NO. 252) FIELD NOTES (FIELD BOOK 86, PAGE 15) BY W. C. GALLOWAY, C.S., DATED SEPTEMBER 16, 1944. *SET 1-1/2" HEAVY PIPE, 1-1/4" SHAFT INSIDE WITH PLATE ON TOP. FOUND STONE, BROKE SAME AND PLACED ABOUT PIPE. OAK 12" DIA (GLO BT) BEARS N48°W, 2.33 CHAINS (153.78 FEET), STANDING. MARKED FIR 54" DIA BEARS N63°40'E, 1.566 CHAINS (103.36 FEET), MARKED NORTH.*
- [03] BENTON COUNTY CORNER RESTORATION BOOK NO. 1, PAGE 238, BY W. C. GALLOWAY, C.S., DATED SEPTEMBER 16, 1944. *SET 1-1/2" HEAVY PIPE, 1-1/4" SHAFT INSIDE WITH PLATE ON TOP. SET FROM OAK 12" DIA (GLO BT) BEARS N48°W, 2.33 CHAINS (153.78 FEET), STANDING. FOUND STONE, BROKE SAME AND PLACED AT PIPE. MARKED FIR 54" DIA (CSBT) BEARS N63°40'E, 1.566 CHAINS (103.36 FEET), MARK IN BARK ON NORTH CENTER.*
- [04] BENTON COUNTY CORNER RESTORATION NO. 2621. *TRANSCRIBED FROM RECORD [03] AND MAY CONTAIN ERRORS AND/OR OMISSIONS.*
- [05] BENTON COUNTY MAP NO. 14-7-00002 BY W. C. GALLOWAY, C.S., DATED OCTOBER 21, 1916. *1-1/2" PIPE. OAK 12" DIA (GLO BT) BEARS N48°W, 2.33 CHAINS (153.78 FEET), STANDING, DID NOT GROW OVER. FIR 54" DIA BEARS N63°40'E, 1.566 CHAINS (103.36 FEET), MARKED NORTH.*
- [06] BENTON COUNTY SURVEY NO. 9942, A BUREAU OF LAND MANAGEMENT ADMINISTRATIVE SURVEY BY N. WOOD AND R. SMITH, DATED FEBRUARY, 1972. *1-1/2" PIPE. FIR 64" DIA (CSBT) BEARS N63°40'E, 103.4 FEET, STANDING, BARK SCRIBE VISIBLE "CS 25". SET 3/4" PIPE BEARS N0°11'W, 38.47 FEET.*
- [07] BENTON COUNTY SURVEY NO. 7275 BY GARY T. JOHNSTON, P.L.S., DATED MARCH 23, 1981. *FOUND 1-1/2" IRON PIPE.*
- [08] BENTON COUNTY MINOR LAND PARTITION NO. 7 BY UNKNOWN DRAFTSMAN, NO DATE GIVEN. *CORNER NOT DESCRIBED.*
- [09] BENTON COUNTY SURVEY NO. 8400 BY THEODORE JAMES LANGTON, P.L.S., DATED MARCH 20, 1990. *FOUND 1-1/2" IRON PIPE, AXLE LOOSE INSIDE. 3/4" INSIDE DIAMETER PIPE BEARS N0°11'W, 38.64 FEET.*
- [10] BENTON COUNTY CORNER RESTORATION NO. 3733 BY DANNA L. FEHRENBACHER, C.S., DATED JANUARY 31, 1990. *FOUND 1-1/2" INSIDE DIAMETER IRON PIPE FOR THE CORNER, FIRMLY SET. THE PIPE HAS A 1" SHAFT WITH AN ATTACHED PLATE STUCK IN THE TOP. FOUND FIR 64" DIA (CSBT) WITH A HEALED FACE BEARS N64°E, 103.36 FEET. SET A PK NAIL AND A BRASH WASHER STAMPED "BENTON COUNTY SURVEYOR" (BCBW) IN THE SOUTHEASTERLY BASE. FOUND 1" INSIDE DIAMETER IRON PIPE, FIRMLY SET, BEARS N2°E, 38.61 FEET. SET 3-1/4" BENTON COUNTY BRASS CAP, STAMPED "S-SE COR DLC 43 J. HOLGATE DLC 43 T14S R7W W.M. 1990", CENTERED IN THE RECOVERED 1-1/2" IRON PIPE. BURIED THE SHAFT/PLATE HORIZONTALLY ALONG THE WEST SIDE. FIR 10" DIA BEARS N18°E, 22.18 FEET, FACED AND SCRIBED "DLC 43 BT". SET A PK NAIL AND A BCBW IN THE NORTHWESTERLY BASE. FIR 15" DIA BEARS N40°W, 9.12 FEET, FACED AND SCRIBED "DLC 43 BT". SET A PK NAIL AND A BCBW IN THE NORTHEASTERLY BASE. FIR 6" DIA BEARS S77°W, 8.57 FEET, FACED AND SCRIBED "X BT". SET A PK NAIL AND A BCBW IN THE NORTHERLY BASE. FIR 4" DIA BEARS S64°E, 21.44 FEET, FACED AND SCRIBED "X BT". SET A PK NAIL AND A BCBW IN THE NORTHEASTERLY BASE. SET ORANGE FIBERGLASS "SURVEY MARKER" POST 1 FOOT NORTHERLY.*
- [11] BENTON COUNTY SURVEY NO. 9998 BY THEODORE JAMES LANGTON, P.L.S., DATED OCTOBER 27, 2004. *FOUND BENTON COUNTY BRASS CAP. FOUND 1" PIPE BEARS N0°06'25"W, 38.62 FEET.*

FIRM/AGENCY: BENTON COUNTY SURVEYOR'S OFFICE
ADDRESS: 360 S.W. AVERY AVE., CORVALLIS, OR 97333; PH. 541-766-6821
RESEARCH BY: DAVID L. MALONE, P.L.S.
DATA ENTRY BY: SAME

BENTON COUNTY CORNER RESTORATION FORM

3733

SECTION 7 TOWNSHIP 14 S RANGE 7 W DLC JACOB HOLGATE NO. 43 CORNER S-SE
DATE 1/31/90 CORNER RESTORATION FIELD BOOK NUMBER 7 PAGE 18

CORNER DESIGNATION:

THE SOUTH-SOUTHEAST CORNER OF THE
JACOB HOLGATE DLC NO. 43.



- CONDITION REPORT ONLY
- REFERENCED OUT
- RENEWED
- SURVEYED IN

LOCATION AND COMMENTS:

THE CORNER IS LOCATED ON A WESTERLY SLOPING, WOODED HILLSIDE APPROXIMATELY 200 FEET WESTERLY FROM THE CORNER OF A GRAVEL DRIVE THAT TURNS FROM EAST TO NORTH.

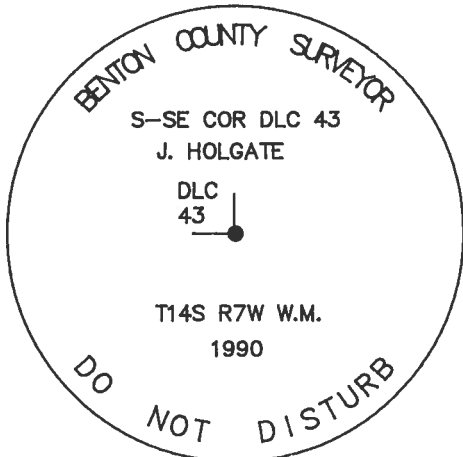
PREVIOUS RENEWALS/SURVEYS, ETC:

ORIGINAL G.L.O. NOTES BY D. HATHORN IN 1856.
CORNER RESTORATION NO. 2621 BY W. C. GALLOWAY IN 1944.
COUNTY SURVEY NO. 7275 BY G. JOHNSTON IN 1981.

MONUMENTS AND ACCESSORIES FOUND (CONDITION AND SOURCE):

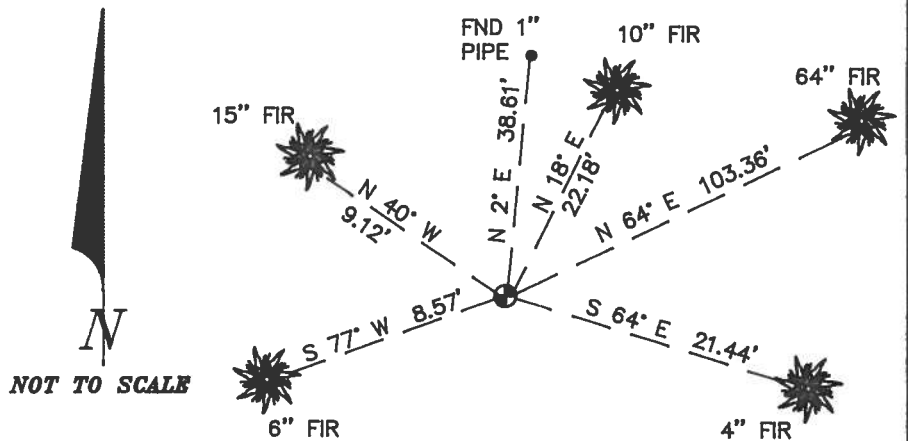
FOUND: 1 1/2" INSIDE DIAMETER IRON PIPE FOR THE CORNER, FIRMLY SET. THE PIPE HAS A 1" SHAFT WITH AN ATTACHED PLATE STUCK IN THE TOP (CORNER RESTORATION NO. 2621).
FOUND: A FIR 64" IN DIAMETER WITH A HEALED FACE BEARS N 64° E 103.36 FEET (N 63° 40' E 103.36 FEET, CORNER RESTORATION NO. 2621). SET A P.K. NAIL AND A B.C.B.W. IN THE SOUTHEASTERLY BASE. FOUND A BLM B.T. TAG ON THE SOUTHWESTERLY FACE. SET A NEW TAG ABOVE FOUND TAG.
FOUND: 1" INSIDE DIAMETER IRON PIPE, FIRMLY SET, BEARS N 2° E 38.61 FEET (N 1° 24' 30" E 41.71 FEET, COMPUTED FROM COUNTY SURVEY NO. 7275).
NO OTHER RECORD BEARING OBJECTS WERE RECOVERED.

MONUMENT DETAIL



3 1/4" BRASS CAP

SKETCH



MONUMENT SET (PROCEDURES AND DESCRIPTION):

SET: 3 1/4" BENTON COUNTY BRASS CAP, STAMPED AS SHOWN, CENTERED IN THE RECOVERED 1 1/2" IRON PIPE. BURIED THE SHAFT/PLATE HORIZONTALLY ALONG THE WEST SIDE.

NEW ACCESSORIES:

A FIR 10" IN DIAMETER BEARS N 18° E 22.18 FEET. FACED AND SCRIBED "DLC 43 BT". SET A P.K. NAIL AND A B.C.B.W. IN THE NORTHWESTERLY BASE. SET A B.T. TAG ON THE SOUTHWESTERLY FACE.
A FIR 15" IN DIAMETER BEARS N 40° W 9.12 FEET. FACED AND SCRIBED "DLC 43 BT". SET A P.K. NAIL AND A B.C.B.W. IN THE NORTHEASTERLY BASE. SET A B.T. TAG ON THE SOUTHEASTERLY FACE.
A FIR 6" IN DIAMETER BEARS S 77° W 8.57 FEET. FACED AND SCRIBED "X BT". SET A P.K. NAIL AND A B.C.B.W. IN THE NORTHERLY BASE. SET A B.T. TAG ON THE EASTERLY FACE.
A FIR 4" IN DIAMETER BEARS S 64° E 21.44 FEET. FACED AND SCRIBED "X BT". SET A P.K. NAIL AND A B.C.B.W. IN THE NORTHEASTERLY BASE. SET A B.T. TAG ON THE NORTHWESTERLY FACE.
SET: ORANGE FIBERGLASS "SURVEY MARKER" POST 1 FOOT NORTHERLY.

NOTES:

B.C.B.W. IS A BRASS WASHER STAMPED "BENTON COUNTY SURVEYOR". COMPASS DECLINATION IS 20° EAST. ALL MEASURED DISTANCES AND COMPASS BEARINGS ARE TO THE CENTER OF THE OBJECT, UNLESS OTHERWISE NOTED.

FIRM/AGENCY: BENTON COUNTY PUBLIC WORKS
ADDRESS: 360 S.W. AVERY AVE. CORVALLIS OR. 97333; PH. 757-6821
PARTY CHIEF: CURTIS J. LIESENFELT
CREW: MARY BARRON
WITNESS:

REGISTERED
PROFESSIONAL
LAND SURVEYOR

Danna L. Fehrenbacher

OREGON
JULY 16, 1982
DANNA L. FEHRENBACHER
1995

T145 R7W SEC. 7 S-SE COR. JACOB HOLCOMBE D.L.C. 43

FND: 1 1/2" I.O.P. FIRMLY SET FOR THE COR. PIPE HAS A 1" SHAFT @ A PLATE STUCK IN TOP. (COR. REST. NO. 2621)

A FIR 64" IN DIA. @ A HEALED FACE BEARS N 64° E 103.36' (N 63° 40' E ~ 103.36' COR. REST. NO. 2621)

SET PK + B.C.B.W. IN SE 1/4 BASE. FND BLM B.T. TAG ON SW 1/4 FACE SET NEW TAG ABOVE.

1" I.O.P. FIRMLY SET BEARS N 20° E ~ 78.61' (N 1° 24' 30" E ~ 41.71' COMPUTED FROM CS 7275)

NO OTHER RECORD BEARING OBJECTS WERE RECOVERED.

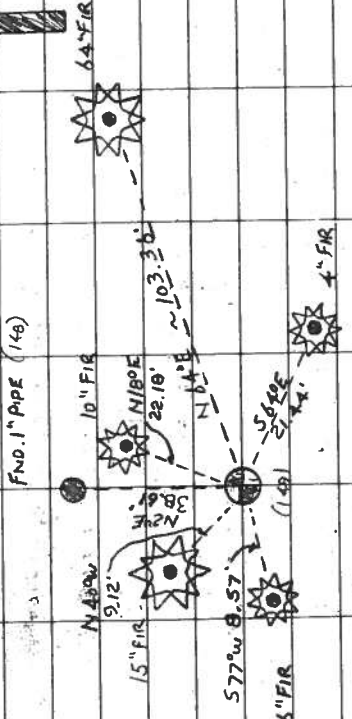
SET: 3 1/4" BEN. CO. B.C. STAMPED AS SHOWY CENTERED. IN THE RECOVERED 1 1/2" PIPE BURIED THE SHAFT HORIZ ALONG THE W. SIDE.

A FIR 10" IN DIA. BEARS N 18° E ~ 22.18' FACED & SCRIBED "DLC 43 BT". SET PK + B.C.B.W. IN NW 1/4 BASE SET BT TAG ON SW 1/4 FACE.

A FIR 15" IN DIA. BEARS N 40° W ~ 9.12' FACED & SCRIBED "DLC 43 BT" SET PK + B.C.B.W. IN NE 1/4 BASE SET BT TAG ON SE 1/4 FACE.

A FIR 6" IN DIA. BEARS S 77° W ~ 8.57' FACED & SCRIBED "DLC 43 BT" SET PK + B.C.B.W. IN N 1/4 BASE SET BT TAG ON E 1/4 FACE.

11/31/90, COR. M.B.D., SILVA COR. 20° E, DEC., CLOY, 6060



A FIR 4" IN DIA. BEARS S 64° E ~ 21.44' FACED & SCRIBED "X BT" SET PK + B.C.B.W. IN VBASE. SET BT TAG ON NW 1/4 FACE.

SET: ORANGE FIBER GLASS "SURVEY MARKER" POST 1" IN 1/4

THE COR. IS LOCATED ON A W 1/2 SLOPING WOODED HILL-SIDE 200' + W 1/2 FROM THE COR. OF A GRAD. DR. THAT TURNS FROM E TO N. IT IS POOR FOR PREMARKING

A-GPS CONTROL.

S-SE COR. D.L.C. 43
J. HOLCOMBE

D.L.C. 43
CAP

T145 R7W W.M.
1990

STAMPINGS

CORNER RESTORATION BOOK NO. 1

C.S. 311

For Clair Taylor by
W.C. Galloway
Witness C.W. Rober
and Oliver Hendrix
June 15, 1943

1/4 Sec. Corner bet. Secs. 9 and 10 T. 15-8

Stone in place mkd. 1/4 S

Set a 1" x 38" bolt and placed rock against bolt on S. Side
Mkd. fir 14" in dia. bears N 42 1/2° E. 131.0 lks. center of tree
" " 6" " " " N. 77° 40' W. 88.1 " " " "

Stone 16" x 18" x 14" ? S. 77° 40' W. 66.6 lks. to highest ridge.
" 26" x 30" x ? S. 5° W. 15.1 lks. to high point.

Witnesses, C.W. Rober
and Walter Hendrix
June 15, 1943

Corner to Secs. 9, 10, 15 and 16 T. 15-8

Set a 2" Pipe 24" long, stones only corner.

Mkd. Fir 7" in dia. bears N. 20° E. 32.6 lks.
Alder 12" " " " N. 47° E. 21 " stump
" Maple 10" " " " N. 89 1/2° E. 24.9 "
" Fir 8" " " " S. 79° W. 30 " std. leaning N.
" Cedar 13" " " " N. 86° W. 10.6 "
" Fir 14" " " " N. 19 1/2° W. 67 " "

Witnesses, C.W. Rober
and Dale Cramer
June 17 1943

1/4 Sec. Cor. bet. Secs. 10 and 11 T. 15-8

Set 3/4" pipe

Hemlock 10" (now 30") N. 62° 40' W. 37 lks. std.
Mkd. Cedar 33" in dia. bears N. 87° E. 35.0 "
" 3" " " " N. 73° W. 11.0 " not mkd.
Maple 16" " " " S. 13° E. 45.9 "

Witnesses, C.W. Rober
and Dale Cramer
June 18, 1943.

1/4 Sec. Corner bet. Secs. 3 and 10 T. 15-8

Set 3/4" Pipe, 2 rocks by.

Alder 6" in dia. bears (now 17") N. 1° E. 27.5 lks.
Mkd. fir 8" " " " N. 9° E. 23.7 lks.
" 24" " " " (now 46") S. 37 1/2° W. 190 "

Witness C.W. Rober
June 29, 1943

1/4 Sec. Corner bet. Secs. 10 and 15 T. 15-8

Set 3/4" pipe, in steep bank N.E., found stone lying down

Fir 7" (now 24) in dia. bears N. 55° W. 23 lks.
Mkd. " 20" " " " N. 57 1/2° E. 82.7 " W. part of mark on S. Ap
High sharp point of rock at crevice N. of projection N. 65° 50' E. 94.85 lks.

C.S. # 252

by W.C. Galloway

Sept. 16, 1944
Witnesses
Eugene Badell

Most S. S.E. Corner of Jacob Holgate D.L.C. 39 & 43 T. 13-7
T. 14-7

Set a 1 1/2" heavy pipe, 1 1/4" shaft inside with plate on top.

Set from Oak 12° N 48° W 2.33 std. Found stone, broke same and placed at pipe.
Mkd. fir 54" in dia. bears N 63° 40' E 1.566 chs., mark in bark on N. center.

C.S. 82

N.W. Corner of John T. Fortson D.L.C. # 57 T. 14-6

Set a steel drill

14-7 43

Most S. S. E. corner of Jacob Holgate DLC 39 and 43, Twp. 14-7 and ~~2321~~

Reestablishment by W. C. Galloway

Sept. 16, 1944

Set a $1\frac{1}{2}$ " heavy pipe, $1\frac{1}{4}$ " shaft inside with plate on top.

Oak 12" in diam bears N 48° W

2.33 chains

Fir 54" in diam bears N 63° 40' E

1.566 chains

Witness Eugene Bedell