

148100700

DATE 10/27/2020TOWNSHIP 14 SOUTH, RANGE 8 WEST, WILLAMETTE MERIDIAN; SECTION 6 CORNER NORTHWEST
DONATION LAND CLAIM N/A CORNER N/A**COMMON CORNER(S):**

NORTHEAST CORNER SECTION 1, TOWNSHIP 14 SOUTH, RANGE 9 WEST

RECORDS (INFORMATION IN *BOLD ITALICS* IS COUNTY STAFFS' INTERPRETATION OF THE RECORD)

BASED ON EXTENSIVE RESEARCH AND RECOVERY OF EVIDENCE, THIS OFFICE HAS DETERMINED THAT MOST GENERAL LAND OFFICE SURVEYORS IN BENTON COUNTY BEFORE 1890 MEASURED TO THE FACE OF BEARING TREES.

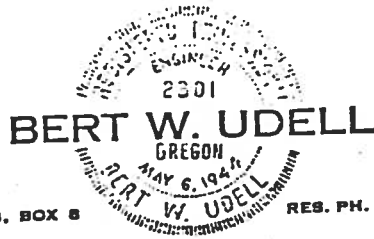
- [01] GENERAL LAND OFFICE (GLO) NOTES BY DENNIS HATHORN, D.S., DATED SEPTEMBER 10, 1856. *SET STANDARD CORNER FROM WHICH A FIR 50" DIA BEARS S85°W, 25 LINKS (16.50 FEET); FIR 50" DIA BEARS S13°E, 310 LINKS (204.60 FEET).*
- [02] GENERAL LAND OFFICE (GLO) NOTES BY JEREMIAH M. DICK, D.S., DATED JULY 8, 1874. *THE POST WAS ROTTED AWAY AND THE MARKS ON THE BEARING TREES BURNED OFF. SET A FIR POST 5 FEET LONG, 4" SQUARE, FROM WHICH A FIR 60" DIA BEARS S53°W, 60 LINKS (39.60 FEET); FIR 50" DIA BEARS N48°W, 211 LINKS (139.26 FEET); FIR 60" DIA BEARS N20°E, 300 LINKS (198.00 FEET); FIR 60" DIA BEARS S60°E, 219 LINKS (144.54 FEET).*
- [03] GENERAL LAND OFFICE (GLO) NOTES BY ALONZO GESNER, D.S., DATED JUNE 25, 1891. *OLD POST DESTROYED, BEARING TREES DEAD WHEN MARKED. SET FIR POST 4 FEET LONG, 4" SQUARE, 24" IN THE GROUND, MARKED "T13SR8WS31SC" ON NORTHEAST FACE, "T14SR8WS6" ON THE SOUTHEAST FACE, "T13SS36" ON THE NORTHWEST FACE, AND "S1" ON THE SOUTHWEST FACE, 6 NOTCHES ON THE NORTH, EAST AND WEST EDGES, FROM WHICH A FIR 50" DIA (GLO BT) BEARS S13°E, 310 LINKS (204.60 FEET), BURNED DOWN AND NEARLY DESTROYED; FIR 50" DIA (GLO BT) BEARS S85°W, 25 LINKS (16.50 FEET), MARKED "R9WT14S1", STUMP STANDING. MARKED A RED FIR 6" DIA BEARS N41°W, 40 LINKS (26.40 FEET), MARKED "T13SR9WS36SCBT"; ALDER 8" DIA BEARS N12°E, 54 LINKS (35.64 FEET), MARKED "T13SR8WS31SCBT".*
- [04] GENERAL LAND OFFICE (GLO) NOTES BY EDWARD F. SHARP, D.S., DATED SEPTEMBER 16, 1897. *A POST 24" ABOVE GROUND, 4" SQUARE, MARKED AS DESCRIBED BY THE SURVEYOR GENERAL. THE BEARING TREES BEING GREATLY DECAYED, REESTABLISH A FIR 50" DIA BEARS S74°E, 277 LINKS (182.82 FEET), MARKED "T14SR8WS6BT"; DEAD FIR 40" DIA BEARS S39°W, 150 LINKS (99.00 FEET), MARKED "T14SR9WS1BT".*
- [05] LINCOLN COUNTY SURVEY NO. 599 BY HOWARD E. TAYLOR, P.E., DATED MARCH, 1955. *CORNER NOT DESCRIBED.*
- [06] LINCOLN COUNTY SURVEY NO. 732 IS A LETTER BY BERT W. UDELL, P.E., DATED OCTOBER 6, 1956. *IDENTIFIED THIS CORNER BY CHOPPING INTO THE TOP OF A 36" STUMP AND FINDING SCRIBING IN GOOD CONDITION. THIS STUMP IS THE 6" FIR MARKED IN 1891 RESURVEY. THIS STUMP IS ON THE NORTH EDGE OF A BENCH. THERE IS A 12" STUMP 2 FEET NORTHEAST OF BEARING TREE STUMP AND A 22" STUMP 3 FEET WEST. THERE ARE OLD CAT ROADS AROUND IT. SET A SMALL STAKE AT THE CORNER BY REVERSING THE GOVERNMENT BEARING AND DISTANCES. THIS SET THE CORNER AT S41°E, 40 LINKS (26.4 FEET) FROM THE FACE ON THE STUMP. MARKED NEW RED FIR 20" DIA BEARS S21°W, 30.5 FEET, SCRIBING IT "S1 T14S" ABOVE AND "CS BT" BELOW.*
- [07] LETTER TO BENTON COUNTY FROM BERT W. UDELL, P.E., DATED OCTOBER 6, 1956. *COPY OF RECORD [06].*
- [08] BENTON COUNTY CORNER RESTORATION NOS. 1873 AND 1926. *REFERENCES RECORD [07].*
- [09] LINCOLN COUNTY SURVEY NO. 2267 IS A BLM LOCAL RECORD CORNER CARD FOR CORNER POINT NO. 111 BY LEO J. MARTIN, FORESTER, DATED NOVEMBER 5, 1963. *SET 3/4" X 36" GALVANIZED IRON PIPE WITH "BLM APPROX. COR. PT. #111" ATTACHED IN SLIT IN PIPE. SAWED FIR STUMP 40" DIA (GLO BT) BEARS N41°W, 40 LINKS (26.40 FEET), VISIBLE SCRIBE. THIS TREE WAS 6" WHEN SCRIBED BY GESNER IN 1891. SAWED FIR STUMP 60" DIA (GLO BT) BEARS S66°E, 177 FEET. THIS TREE WAS BEARING TREE SET BY SHARP IN 1897. SET CORNER FROM TREE SET BY GESNER. FIR 18" DIA BEARS S21°W, 31 FEET, PARTIALLY HEALED BLAZES, NO BT.*
- [10] BENTON COUNTY COPY OF BLM LOCAL RECORD CORNER CARD FOR CORNER POINT NO. 111 BY LEO J. MARTIN, FORESTER, DATED NOVEMBER 5, 1963. *COPY OF RECORD [09].*
- [11] BENTON COUNTY CORNER RESTORATION NOS. 2665 AND 2828. *TRANSCRIBED FROM RECORD [10] AND MAY CONTAIN ERRORS AND/OR OMISSIONS.*
- [12] BENTON COUNTY SURVEY NO. 6433 BY GARY T. JOHNSTON, P.E., DATED MAY, 1977. *FOUND 3/4" IRON PIPE.*
- [13] BENTON COUNTY SURVEY NO. 6560 BY FRED I. LEMKE, P.L.S., DATED DECEMBER 8, 1977. *FOUND 3/4" PIPE 18" UP WITH BEARING TREES.*
- [14] LINCOLN COUNTY SURVEY NO. 9546 BY MICHAEL D. LEMKE, P.L.S., DATED APRIL 23, 1981. *FOUND 3/4" PIPE 18" HIGH WITH BEARING TREES.*
- [15] LINCOLN COUNTY SURVEY NO. 9577 BY MICHAEL D. LEMKE, P.L.S., DATED MAY 20, 1981. *FOUND 3/4" IRON PIPE.*
- [16] LINCOLN COUNTY SURVEY NO. 11659 BY THEODORE JAMES LANGTON, P.L.S., DATED APRIL 7, 1987. *FOUND 3/4" INNER DIAMETER PIPE.*
- [17] LINCOLN COUNTY SURVEY NO. 16405 BY THEODORE JAMES LANGTON, P.L.S., DATED DECEMBER 27, 2001. *3/4" PIPE, UNKNOWN ORIGIN.*

FIRM/AGENCY: BENTON COUNTY SURVEYOR'S OFFICE
ADDRESS: 360 S.W. AVERY AVE., CORVALLIS, OR 97333; PH. 541-766-6821
RESEARCH BY: DAVID L. MALONE, P.L.S. **DATA ENTRY BY:** SAME

LOGGING ENGINEERING
LOG PLANS, ROADS
AND CUTTING LINES

TIMBER CRUISING

LAND SURVEYING
PROPERTY LINES
SUBDIVISIONS
G.

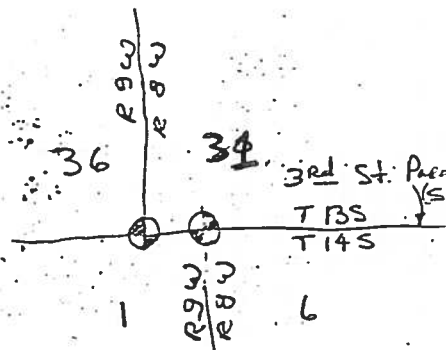


RT. 3, BOX 8

RES. PH. 1-5752

LEBANON, OREGON

October 6, 1956



SEE COR.
REST. NO.
2134 (CJL)
7/23/90.

On October 4, 1956 at the request of Carl Barclay, I located the Southeast corner of Section 36, T 13 S, R 9 W which is a 1" pipe set from the original B.T. (a 12" fir N 29° W 57.4 ft.) and marked by new B.T.'s; a Fir 42" N 88 E 73.34 ft. (across a creek flowing NW); and a 26" maple due West 2 ft. These trees were marked by Mr. H.E. Taylor of my firm in March 1955.

36 | 30
—|—
1 | 6

From above corner I chained East on 20° variation with 100 ft. tape and abney. At 1,123 ft. east I was 24 ft. north of the northwest corner of section 6, T 14 S, R 8 W.

I identified this corner by chopping into the top of a 36" stump and finding scribing in good condition. This stump is the 6" fir marked in 1891 resurvey. This stump is on the north edge of a bench. There is a 12" stump 2 ft. northeast of BT stump and a 22" stump 3 ft. west. There are old cat roads around it. I set a small stake at the corner by reversing the government bearing and distances. This set the corner at South 41° East 40 lks. (26.4 ft.) from the face on the stump. I marked new a 20" red fir at S 21° W 30.5 ft. scribing it S 1 T 14 S

36 | 30
—|—
1 | 6

MADE
INDEX
CARD
(CJL)
7/23/90.

CS
above and BT below.

Witnessed by Carl Barclay
Gerald Smallwood

Bert W. Udell

R.P.E. #2301

CC's to:

- C & M Logging Co., Tidewater, Oregon
- Curtis Hansen, Benton County, Surveyor, Corvallis, Oregon
- Bud Burdette, Lincoln County, Surveyor, Newport, Oregon
- H.G. Hopkins, Ranger, U.S.F.S. Waldport, Oregon

TIAS RBW SECTION 6 NW COR.

1873

FOR THE CORNER INFORMATION SEE THE BERT UDELL LETTER DATED 10/6/56 IN THE TIAS RBW FILE IN THE CORNER RESTORATION CORRESPONDENCE FILE DRAWER (CJL 12/12/90).

TIAS RBW SECTION 6 NORTHWEST CORNER

1926

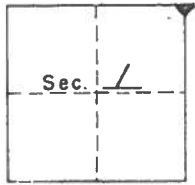
FOR THE CORNER INFORMATION SEE THE BERT UDELL LETTER DATED 10/6/56 IN THE TIAS RBW FILE IN THE CORNER RESTORATION CORRESPONDENCE FILE DRAWER (CJL 7/23/90).

SEE COR. REST. NO. 2665 (CJL 7/23/90).

NEW

A1-258 LOCAL RECORD
 7-29-55 CORNERS OF THE CADASTRAL SURVEY GRID
 T. 14S R. 9W, Will Mer., Oregon State.

UNITED STATES
 DEPARTMENT OF THE INTERIOR
 BUREAU OF LAND MANAGEMENT



SYMBOLS

- Official corner found
- Probable corner found, authenticity doubtful.
- Corner searched for and not found.

Reported By Leo J. Martin
 Title Forester

Date 11-5-63

Sec 1 Corner common to Secs. 1 & 6 is a mound of stone, tree, rock, fire pit, iron pipe, size 3" x 36" Galv.

LEGIBLE MARKS ON BEARING OBJECTS

This tree was 6" when scribed	Visible Scribe	*	Partially Healed Blazes (No BT)	
		BT		
KIND	Sawed Fir Stump	Sawed Fir Stump	Fir	
SIZE	40"	60"	18"	
BEARING	N41°W	S66°E	S21°W	
DISTANCE	40 Lks	177 Ft	31 Ft.	
BT TAG POSTED	Yes	Yes	Location Tag	

ADDITIONAL INFORMATION

* This tree was B.T. set by Sharpe in 1897. Original Bearing & dist were Fir 50°, 574°E, 277 Lks. I set cor. from tree set by Osner. Set: 3" x 36" Galv. I.P. with BLM approx. Cor. Pt. #111 attached in slit in pipe.

INTERIOR-BUREAU OF LAND MANAGEMENT, PORTLAND, OREGON

(OVER)

BENTON COUNTY SURVEYORS OFFICE - CORNER RESTORATION

2665

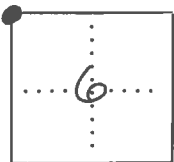
T. 14 S, R. 8, 9 W, W. B. & M., BENTON COUNTY, OREGON

SECTION 6

REPORTED BY Leo J. Martin

TITLE Forester

DATE 11-5-63



- OFFICIAL CORNER FOUND
- CORNER SET

Sec 6 CORNER COMMON TO SEC. 6 & 1
 IS 3/4" x 36" Galv. Iron pipe
 DESCRIBE

ADDITIONAL INFORMATION

Corner pt. #111

SEE CORNER CARD IN T14S R8W FILE IN THE T14S CORNER RESTORATION CORRESPONDENCE FILE DRAWER (CJL 7/23/90)

OVER

LEGIBLE MARKS ON BEARING OBJECTS

	Visible Scribe		Partially healed Blazes	
KIND	Sawed Fir Stump	Sawed Fir Stump	Fir	
SIZE	40"	60"	18"	
BEARING	N41°W	S66°E	S21°W	
DISTANCE	40 lks	177 ft	31 ft	
BT TAG POSTED	yes	yes	location tag	

14-8/6 Corner to Sections 1 & 6, Twp. 14S, R 9 W E RBW

2828

Reestablishment by Leo Martin

11-5-63

Set 3/4 x 36" Pipe
Fir stump 40" in diam bears N 41° W 40 lks
Fir stump 60" in diam bears S 66° E 177 ft.
Fir 18" in diam bears S 21° W 31 ft.