

**148200440**

## CORNER FILE TRACKING

S:\Survey Corners\CORNERS\Templates\Filetrac2.doc  
10/04/2010

<b>CORNER NUMBER</b>
<b>148200440</b>

STEP	HISTORY	RESTORATION
Form Prepared, DB	5/3/2013	12/12/19
Field Inspection, DB	12/2/2019	12/2/19
Finish index (count unit)	5/3/13	12/2/19
Counter Index	12/2/19	12/2/19
GIS Index Form	12/3/19	12/3/19
Checked, DB	12/13/19	12/13/19
Form Edited, DB	12/13/19	12/13/19
Form Signed, DB	12/13/19	12/13/19
Authorize Payment, DB	—	—
Archive Digital Files	12/13/19	12/13/19
Collect Documents	12/13/19	12/13/19
PDF File	12/13/19	12/13/19
Copy For Filming	12/13/19	12/13/19
Scanned (pdf to laserfiche)	12/13/19	12/13/19
Filmed (Archived), DB		
Filed, DB		

(DB) = Entry needed in database (Access).

### COMMENTS:

DATE 05/02/2013TOWNSHIP 14 SOUTH, RANGE 8 WEST, WILLAMETTE MERIDIAN; SECTION 17 CORNER WEST 1/4  
DONATION LAND CLAIM NONE CORNER NONE**COMMON CORNER(S):**

EAST 1/4 CORNER SECTION 18

**RECORDS (INFORMATION IN *BOLD ITALICS* IS COUNTY STAFFS' INTERPRETATION OF THE RECORD)**

BASED ON EXTENSIVE RESEARCH AND RECOVERY OF EVIDENCE, THIS OFFICE HAS DETERMINED THAT MOST GENERAL LAND OFFICE SURVEYORS IN BENTON COUNTY MEASURED TO THE FACE OF BEARING TREES.

- [01] GENERAL LAND OFFICE (GLO) NOTES BY DENNIS HATHORN, D.S., DATED SEPTEMBER 9, 1856. *SET POST FROM WHICH A MAPLE 12" DIA BEARS S50°W, 67 LINKS (44.22 FEET); A FIR 40" DIA BEARS S72°E, 120 LINKS (79.20 FEET).*
- [02] GENERAL LAND OFFICE NOTES BY ALONZO GESNER, D.S., DATED JUNE 8, 1891. *AT POINT OF OLD CORNER SET ALDER POST 3 FEET LONG, 3 INCHES SQUARE, 24 INCHES IN THE GROUND MARKED "1/4S" ON THE WEST FACE FROM WHICH A RED FIR 40" DIA (GLO BT) BEARS S72°E, 120 LINKS (79.20 FEET) MARKED "1/4S BT"; A MAPLE 12" DIA (GLO BT) BEARS S50°W, 67 LINKS (44.22 FEET) MARKED "1/4S BT". BOTH OF THESE TREES HAVE GROWN ABOUT 8" IN DIAMETER SINCE FIRST MARKED.*
- [03] BENTON COUNTY SURVEY NO. 2624 LOOSE LEAF FIELD NOTES BY CONRAD COOK, DATED OCTOBER 16, 1954. *1/2" BRAKE ROD, 29" ABOVE GROUND. MAPLE IS GONE. FIR SNAG, FACE LAYING ON GROUND. OLD STAKE NEARLY ROTTED OUT. D. FIR 42" DIA BEARS N67°49'E, 1.409 CHAINS (92.99 FEET); RED ALDER 14" DIA BEARS N18°07'W, 0.408 CHAINS (26.93 FEET).*
- [04] BENTON COUNTY CORNER RESTORATION NO. 2699 BY CONRAD COOK, DATED NOVEMBER 4, 1954. *SET A 40" BRAKE ROD 6" ABOVE GROUND FROM WHICH A R. ALDER 14" DIA (CSBT) BEARS N13°10'W, 0.408 CHAINS (26.93 FEET); A FIR 42" DIA (CSBT) BEARS N72°46'E, 1.409 CHAINS (92.99 FEET).*
- [05] BENTON COUNTY SURVEY NO. 2624 BY CURTIS C. HANSON, C.S., DATED NOVEMBER 4, 1954. *FOUND 40" BRAKE ROD 6" ABOVE GROUND. FIR 40" DIA (GLO BT) BEARS N72°E (SIC), 1.20 CHAINS (79.20 FEET) STANDING SNAG WITH FACE ON GROUND; RED ALDER 14" DIA (CSBT) BEARS N18°05'W, 0.408 CHAINS (26.93 FEET) BARK SCRIBED; FIR 42" DIA (CSBT) BEARS N67°51'E, 1.409 CHAINS (92.99 FEET).*
- [06] BUREAU OF LAND MANAGEMENT (BLM) NOTES BY C. ALBERT WHITE, HARVEY E. WOFFORD, AND STEPHEN D. ALBRIGHT, CADASTRAL SURVEYORS, DATED MAY 21, 1970. *FOUND 1/4" DIA IRON ROD, FIRMLY SET, EXTENDING 6" ABOVE GROUND, FROM WHICH A BURNED AND ROTTED FIR SNAG 54" DIA (GLO BT) BEARS S67-1/2°E, 120 LINKS (79.20 FEET) NO MARKS VISIBLE; A SAWED FIR STUMP 43" DIA (CSBT) BEARS N68°E, 141 LINKS (93.06 FEET) WITH SCRIBE MARKS "BT" VISIBLE ON OPEN BLAZE; AN ALDER 18" DIA (CSBT) BEARS N18°W, 40 LINKS (26.40 FEET) WITH SCRIBE MARKS "CS E1/4 S18 BT" VISIBLE ON BARK BLAZE. SET A 2-1/2" DIA IRON POST, 28 INCHES LONG, 24 INCHES IN THE GROUND WITH BRASS CAP MARKED "1/4 S18 S17 T14S R8W 1969" FROM WHICH A WHITE FIR 20" DIA BEARS S70°E, 151 LINKS (99.66 FEET) MARKED "1/4 S17 BT". RESET IRON ROD ALONGSIDE IRON POST.*
- [07] BENTON COUNTY SURVEY NO 6843 BY GARY T. JOHNSTON, P.L.S., DATED FEBRUARY 1979. *FOUND BLM BRASS CAP.*
- [08] BENTON COUNTY PARTITION PLAT NO. 1996-35 BY THEODORE JAMES LANGTON, P.L.S., DATED OCTOBER 28, 1996. *CORNER NOT TIED OR DESCRIBED.*

**FIRM/AGENCY:** BENTON COUNTY SURVEYOR'S OFFICE  
**ADDRESS:** 360 S.W. AVERY AVE. CORVALLIS OR 97333; PH. 766-6821  
**RESEARCH BY:** DAVID L. MALONE, P.L.S.  
**DATA ENTRY BY:** SAME

# BENTON COUNTY CORNER RESTORATION FORM, PAGE 1 OF 2, 148200440R4

## SEE CORNER HISTORY FORM FOR RECORDS ETC.

CORNER RESTORATION FIELD BOOK NUMBER 32 PAGE(S) 58 DATE 12/02/2019  
TOWNSHIP 14 SOUTH, RANGE 8 WEST, WILLAMETTE MERIDIAN; SECTION 17 CORNER WEST 1/4  
DONATION LAND CLAIM N/A CORNER N/A  
CONDITION REPORT    ; REFERENCED OUT X; RENEWED    ; SURVEYED IN    

### LOCATION AND COMMENTS:

CORNER IS LOCATED ON A FLAT AREA IN A RECENT CLEAR CUT. TO REACH CORNER FROM THE INTERSECTION OF SALMONBERRY ROAD AND HIGHWAY 34, TRAVEL NORTHERLY ON HIGHWAY 34 FOR 0.70 MILES TO A TIMBER ROAD ON THE LEFT, TURN ONTO TIMBER ROAD AND FOLLOW FOR 0.60 MILES TO A WYE, TURN LEFT FOR 0.19 MILES TO A WYE, STAY RIGHT FOR 0.17 MILES AND PARK. WALK ABOUT 600 FEET N20°E. CORNER IS GOOD FOR PREMARKING AND GPS CONTROL.

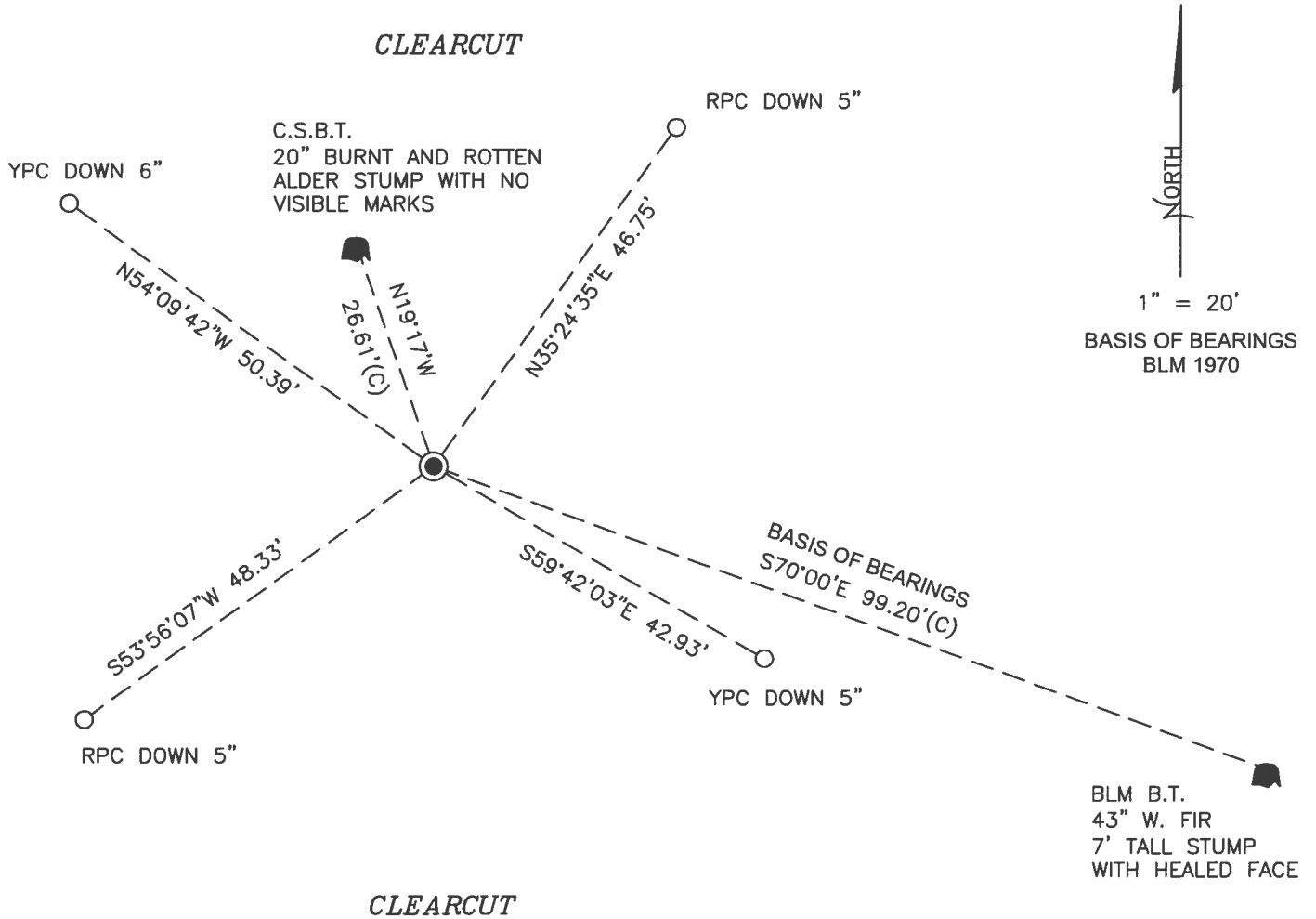
### MONUMENTS AND ACCESSORIES FOUND (CONDITION AND SOURCE):

1. FOUND 2-1/2" IRON PIPE, FIRMLY SET, FLUSH WITH GROUND SURFACE, WITH PIPE SLIGHTLY DAMAGED ON ONE SIDE AND BRASS CAP MISSING. FOUND IRON BRAKE ROD 4" SOUTHEAST, FLUSH WITH GROUND SURFACE.  
(SET POST AS PER RECORD [01]).  
(AT POINT OF OLD CORNER SET ALDER POST 3 FEET LONG, 3" SQUARE, 24" IN THE GROUND MARKED "1/4S" ON THE WEST FACE AS PER RECORD [02]).  
(1/2" BRAKE ROD, 29" ABOVE GROUND, OLD STAKE NEARLY ROTTED OUT AS PER RECORD [03]).  
(SET A 40" BRAKE ROD 6" ABOVE GROUND AS PER RECORD [04]).  
(FOUND 40" BRAKE ROD 6" ABOVE GROUND AS PER RECORD [05]).  
(FOUND 1/4" DIA IRON ROD, FIRMLY SET, EXTENDING 6" ABOVE GROUND. SET A 2-1/2" DIA IRON POST, 28" LONG, 24" IN THE GROUND WITH BRASS CAP MARKED "1/4 S18 S17 T14S R8W 1969". RESET IRON ROD ALONGSIDE IRON POST AS PER RECORD [06]).  
(FOUND BLM BRASS CAP AS PER RECORD [07]).
2. FOUND 7 FOOT TALL W. FIR STUMP 43" DIA WITH HEALED FACE BEARS S70°00'E, 99.20 FEET TO CENTER. **BASIS OF BEARINGS FOR THIS RESTORATION.**  
(WHITE FIR 20" DIA BEARS S70°E, 151 LINKS [99.66 FEET] MARKED "1/4 S17 BT" AS PER RECORD [06]).
3. FOUND BURNT AND ROTTEN ALDER STUMP 20" DIA WITH NO VISIBLE MARKS BEARS N19°17'W, 26.61 FEET TO CENTER.  
(RED ALDER 14" DIA BEARS N18°07'W, 0.408 CHAINS [26.93 FEET] AS PER RECORD [03]).  
(R. ALDER 14" DIA BEARS N13°10'W, 0.408 CHAINS [26.93 FEET] AS PER RECORD [04]).  
(RED ALDER 14" DIA BEARS N18°05'W, 0.408 CHAINS [26.93 FEET] BARK SCRIBED AS PER RECORD [05]).  
(ALDER 18" DIA BEARS N18°W, 40 LINKS [26.40 FEET] WITH SCRIBE MARKS "CS E1/4 S18 BT" VISIBLE ON BARK BLAZE AS PER RECORD [06]).

### MONUMENT SET (PROCEDURES AND DESCRIPTION):

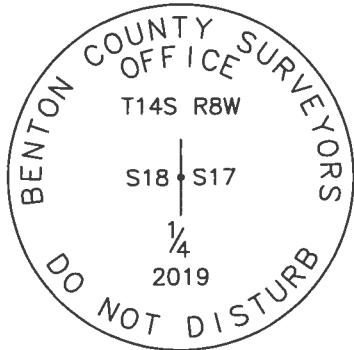
FOUND 2-1/2" IRON PIPE, FIRMLY SET, FLUSH WITH GROUND SURFACE, WITH PIPE SLIGHTLY DAMAGED ON ONE SIDE AND BRASS CAP MISSING. FOUND IRON BRAKE ROD 4" SOUTHEAST, FLUSH WITH GROUND SURFACE. IRON PIPE WAS SET BY BUREAU OF LAND MANAGEMENT (BLM) CADASTRAL SURVEYORS IN 1970 IN PLACE OF THE IRON BRAKE ROD SET BY CONRAD COOK IN 1954, WHICH WAS SET IN PLACE OF THE 1891 GENERAL LAND OFFICE (GLO) OLD STAKE. BOTH THE BLM SURVEYORS AND COOK ALSO FOUND ONE GLO BEARING TREE SNAG. ALTHOUGH THE BRASS CAP SET ON THE IRON PIPE WAS MISSING AND THE PIPE WAS SLIGHTLY DAMAGED, THE PIPE WAS FIRMLY SET IN THE GROUND AND APPEARS TO BE UNMOVED FROM ITS POSITION. THE IRON PIPE IS ACCEPTED AS THE PERPETUATION OF THE ORIGINAL CORNER POSITION.

CEMENTED A 3-1/4" BRASS DISK IN THE CENTER OF THE IRON PIPE, FLUSH WITH GROUND SURFACE, AND MARKED AS SHOWN ON PAGE 2 OF 2. SET FOUR NEW IRON ROD ACCESSORIES AS SHOWN ON PAGE 2 OF 2. SET 6 FOOT ORANGE CARSONITE "SURVEY MARKER" POST 1 FOOT NORTH OF BRASS DISK.



MONUMENT DETAIL

LEGEND



3-1/4" BRASS DISK

- SET 5/8" X 30" REBAR WITH PLASTIC CAP
- YPC YELLOW PLASTIC CAP MARKED "BENTON COUNTY SURVEYOR"
- RPC RED PLASTIC CAP MARKED "BENTON COUNTY SURVEYOR"
- (C) MEASUREMENT TO CENTER
- GOVERNMENT MONUMENT FOUND AS SHOWN
- C.S.B.T. COUNTY SURVEYOR'S BEARING TREE
- BLM BUREAU OF LAND MANAGEMENT
- B.T. BEARING TREE
- BEARING TREE STUMP AS NOTED

**NEW ACCESSORIES:**

1. SET REBAR (SEE LEGEND) N35°24'35"E, 46.75 FEET AND 5 INCHES BELOW GROUND LEVEL.
2. SET REBAR (SEE LEGEND) S59°42'03"E, 42.93 FEET AND 5 INCHES BELOW GROUND LEVEL.
3. SET REBAR (SEE LEGEND) S53°56'07"W, 48.33 FEET AND 5 INCHES BELOW GROUND LEVEL.
4. SET REBAR (SEE LEGEND) N54°09'42"W, 50.39 FEET AND 6 INCHES BELOW GROUND LEVEL.

**NOTES:**

COMPASS DECLINATION IS 15° EAST. ALL MEASURED DISTANCES AND BEARINGS ARE TO THE CENTER OF THE OBJECT, UNLESS OTHERWISE NOTED. ALL BEARING TREES ARE PAINTED AND HAVE A B.T. TAG ATTACHED, FACING THE CORNER UNLESS OTHERWISE NOTED. ALL NEW BEARING TREES HAVE A PLASTIC WASHER (STAMPED "SURVEY MARKER DO NOT REMOVE") ATTACHED BY AN ALUMINUM NAIL TO THE SIDE CENTER OF THE TREE FOR DISTANCE MEASUREMENT, UNLESS OTHERWISE NOTED.

THIS RESTORATION WAS PERFORMED AT THE DIRECTION AND APPROVAL OF THE BENTON COUNTY SURVEYOR *JLM*

REGISTERED  
PROFESSIONAL  
LAND SURVEYOR

FIRM/AGENCY: BENTON COUNTY SURVEYOR'S OFFICE  
 ADDRESS: 360 S.W. AVERY AVE., CORVALLIS, OR 97333; PH. 541-766-6821  
 PRESENT: DAVID L. MALONE, P.L.S., AND BERNARD ALTENBACH, SURVEY TECH.  
 EQUIPMENT: NIKON NIVO3.C WITH SURVEY PRO ONBOARD.

*12/13/19* *David L. Malone*

OREGON  
JANUARY 12, 1999  
DAVID L. MALONE  
51523

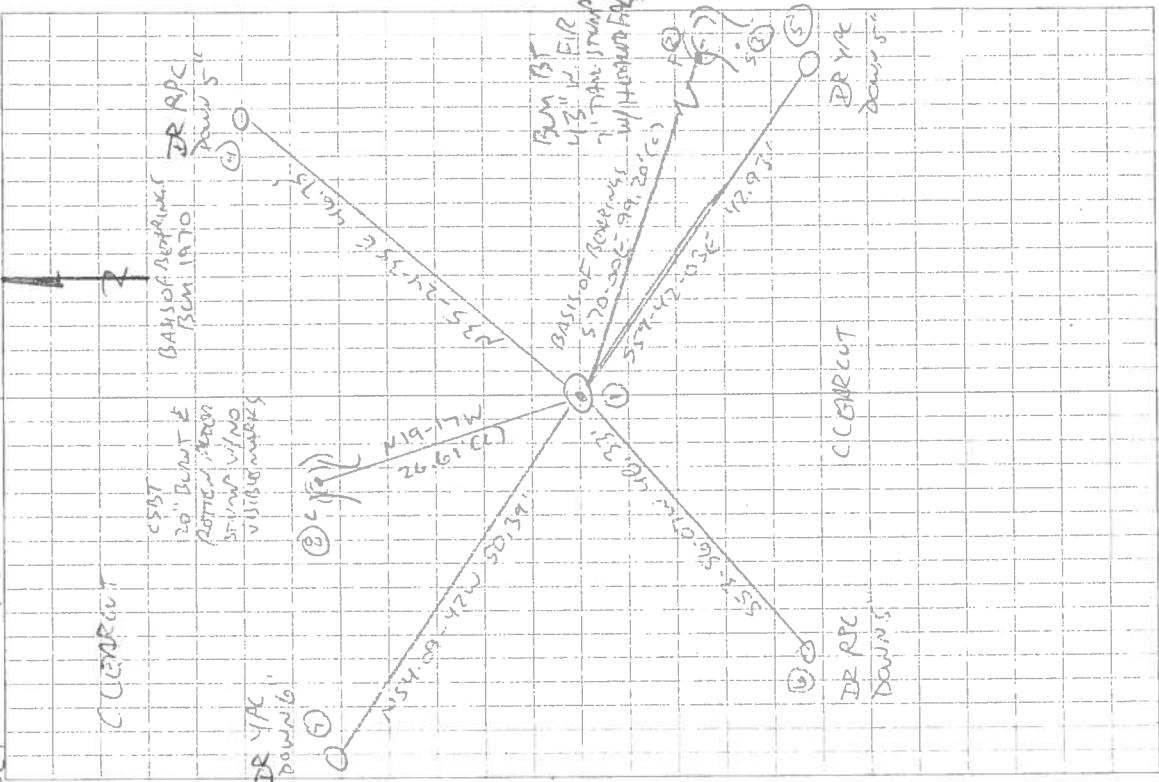
RENEWAL DATE: 12/31/20

6/10/19

D. MATHONE  
B. ABERNETHY

COOL, sunny

NIKON DIGITAL  
SURVEY PRO ON/OPEN



14B 200440

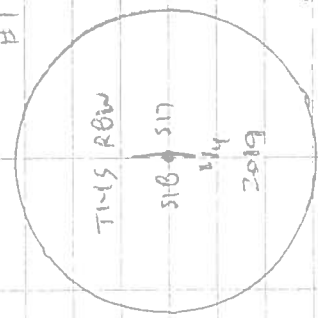
1/4

10/17

REFERENCE T14S RBW

FD 2-1/2" IRON PIPE, FAMILY SET, FLUSH W/  
GROUND SURFACE, BRASS CAP GONE, PIPE SLIGHTLY  
DAMAGED ON ONE SIDE. FD IRON 4" SE FLUSH  
w/ GROUND SURFACE, FD SE BUM ST STUMP, HOLD  
FOR BASIS OF SURVEY. FD ROTTER REMAINS OF  
NW CSBT STUMP. FD ROTTER AND DISTURBANCE  
REMAINS OF NE CSBT STUMP, DID NOT TIE,  
IN IRON PIPE SET 3-1/4" BRASS DISK, CEMENTED IN THE  
TOP, FLUSH w/ GROUND SURFACE. SET 4" NEW IRON  
POD ACCESSIBLE. SET 6" DRAGUE CARBORIDE  
"SURVEY MARKER" POST 1" NORTH OF BRASS DISK,

#1



3-1/4" BRASS DISK

DR = 5/8" - 30" IRON ROD

1/4" OR 1/2" = YELLOW OR RED

PLASTIC CAP MARKED

"SEXTON COUNTY SURVEYOR"

$\frac{1}{4}$ -Section corner between sections 17 and 18, Twp. 14 S., R. 8 W. W. 2000

Reestablishment by Conrad Cook

November 4, 1954

Set a 40" brake rod 6" above ground

R. Alder 14" in diam bears N 13° 10' W

0.408 chains 3176

Fir 42" in diam bears N 72° 46' E

1.409 chains