

148300400

CORNER FILE TRACKING

S:\Survey Corners\CORNERS\Templates\Filetrac2.doc
10/04/2010

CORNER NUMBER
148300400

STEP	HISTORY()	RESTORATION()
Form Prepared, DB	4/08/2011 4/11/13	4/19/13
Field Inspection, DB	4/12/2013	4/12/2013
Finish index (count unit)	4/08/2011 4/11/13	4/12/2013
Counter Index	4/12/13	4/12/13
GIS Index Form	4/19/13	4/19/13
Checked, DB	4/25/13	4/25/13
Form Edited, DB	4/25/13	4/25/13
Form Signed, DB	4/25/13	4/25/13
Authorize Payment, DB	—	—
Archive Digital Files	4/25/13	4/25/13
Collect Documents	4/25/13	4/25/13
PDF File	4/25/13	4/25/13
Copy For Filming	4/25/13	4/25/13
Scanned (pdf to laserfiche)	4/25/13	4/25/13
Filmed (Archived), DB		
Filed, DB		

(DB) = Entry needed in database (Access).

COMMENTS:

DATE 04/11/2013TOWNSHIP 14 SOUTH, RANGE 8 WEST, WILLAMETTE MERIDIAN; SECTION 16 CORNER SOUTHWEST
DONATION LAND CLAIM NONE CORNER N/A**COMMON CORNER(S):**SOUTHEAST SECTION 17
NORTHEAST SECTION 20
NORTHWEST SECTION 21**RECORDS (INFORMATION IN *BOLD ITALICS* IS COUNTY STAFFS' INTERPRETATION OF THE RECORD)**

BASED ON EXTENSIVE RESEARCH AND RECOVERY OF EVIDENCE, THIS OFFICE HAS DETERMINED THAT MOST GENERAL LAND OFFICE SURVEYORS IN BENTON COUNTY MEASURED TO THE FACE OF BEARING TREES.

- [01] GENERAL LAND OFFICE (GLO) NOTES BY DENNIS HATHORN, D.S., DATED JULY 3, 1856. SET POST FROM WHICH A FIR 72" DIA BEARS S65°E, 22 LINKS (14.52 FEET); A FIR 30" DIA BEARS S68°W, 46 LINKS (30.36 FEET); A MAPLE 12" DIA BEARS N57°W, 59 LINKS (38.94 FEET); A MAPLE 12" DIA BEARS N58°E, 104 LINKS (68.64 FEET).
- [02] GLO NOTES BY ALONZO GESNER, D.S., DATED MAY 14, 1891. OLD POST GONE. SET MAPLE POST 4 FEET LONG, 4 INCHES SQUARE, 24 INCHES IN THE GROUND MARKED "T14S S16" ON THE NORTHEAST FACE, "R8W S21" ON THE SOUTHEAST FACE, "S20" ON THE SOUTHWEST FACE AND "S17" ON THE NORTHWEST FACE WITH 4 NOTCHES ON THE EAST EDGE AND 3 NOTCHES ON THE SOUTH EDGE, FROM WHICH A FIR 30" DIA (GLO BT) BEARS S68°W, 46 LINKS (30.36 FEET) MARKED "T14SR8WS20BT"; A MAPLE 12" DIA (GLO BT) BEARS N57°W, 59 LINKS (38.94 FEET) MARKED "T14SR8WS17BT"; A RED FIR 72" DIA (GLO BT) BEARS S65°E, 22 LINKS (14.52 FEET) MARKED "T14SR8WS21BT". THE OTHER TREE GONE. MARKED A MAPLE 5" DIA BEARS N45°E, 25 LINKS (16.50 FEET) MARKED "T14SR8WS16BT".
- [03] BENTON COUNTY ROAD 48180, ROUTE NO. 18, ALIGNMENT FIELD NOTES, BY W. C. GALLOWAY, 1937. SET 5/8" IRON ROD IN 3/4" PIPE FROM WHICH A FIR 72" DIA (GLO BT) BEARS S65°E, 0.22 CHAINS (14.52 FEET); A MAPLE 12" DIA (GLO BT) BEARS N57°W, 0.59 CHAINS (38.94 FEET), 0.605 CHAINS (39.93 FEET) LOG ON UPSERSIDE; A MAPLE 5" DIA BEARS N59°E, 0.233 CHAINS (15.38 FEET); A W. FIR 30" DIA (GLO BT) BEARS S68°W, 0.46 CHAINS (30.36 FEET), STUMP HOLE GOOD; A FIR 30" DIA BEARS S64°W, 0.162 CHAINS (10.69 FEET), SPIKE SOUTHEAST.
- [04] BENTON COUNTY CORNER RESTORATION BOOK NO. 1, PAGE 216, BY W. C. GALLOWAY, C.S., DATED JUNE 15, 1937. SET A 5/8" IRON ROD IN A 3/4" PIPE FROM WHICH A FIR 72" DIA (GLO BT) BEARS S65°E, 22 LINKS (14.52 FEET) STANDING; A MAPLE 12" DIA (GLO BT) BEARS N57°W, 59 LINKS (38.94 FEET) STANDING, 60.5 LINKS (39.93 FEET) TO NAIL, LOG ON UPPER SIDE; A W. FIR 30" DIA (GLO BT) BEARS S68°W, 46 LINKS (30.36 FEET) DOWN, STUMP HOLE GOOD; A W. FIR 30" DIA (CSBT) BEARS S64°W, 16.2 LINKS (10.69 FEET) TO SPIKE SOUTHEAST.
- [05] BENTON COUNTY CORNER RESTORATION NO. 2696. TRANSCRIBED FROM RECORD [04] AND MAY CONTAIN ERRORS AND/OR OMISSIONS.
- [06] BENTON COUNTY MAP OF ROAD NO. 614, ROUTE #18 SALMONBERRY ROAD, (RECORD OF ROADS BOOK 3, PAGE 75), NO DRAFTSMAN OR DATE GIVEN. CORNER TIED BUT NOT DESCRIBED.
- [07] BENTON COUNTY MAP NO. 14-8-00008 BY W. C. GALLOWAY, C.S., DATED DECEMBER 1937. 5/8" IRON IN 3/4" PIPE. FIR 72" DIA (GLO BT) BEARS S65°E, 0.22 CHAINS (14.52 FEET) STANDING DEAD; MAPLE 12" DIA (GLO BT) BEARS N57°W, 0.59 CHAINS (38.94 FEET), 0.605 CHAINS (39.93 FEET) TO LINE; MAPLE 5" DIA (CSBT) BEARS N59°E, 0.233 CHAINS (15.38 FEET); FIR 30" DIA (CSBT) BEARS S64°W, 0.162 CHAINS (10.69 FEET) SPIKE SOUTHEAST.
- [08] BENTON COUNTY MAP NO. 14-8-00006 BY W. C. GALLOWAY, C.S., DATED SEPTEMBER 3, 1942. 5/8" IRON IN 3/4" PIPE. FIR 72" DIA (GLO BT) BEARS N22°E (SIC), STANDING DEAD; MAPLE 12" DIA (GLO BT) BEARS N57°W, 0.59 CHAINS (38.94 FEET) STANDING, 0.605 CHAINS (39.93 FEET) TO LINE; MAPLE 5" DIA (CSBT) BEARS N59°E, 0.233 CHAINS (15.38 FEET); FIR 30" DIA (CSBT) BEARS S64°W, 0.162 CHAINS (10.69 FEET) SPIKE SOUTHEAST.
- [09] BENTON COUNTY SURVEY NO. 2604 BY PAUL J. FERGUSON, P.L.S., DATED MAY 1952. FOUND 5/8" IRON IN 3/4" IRON PIPE. FIR 72" DIA (GLO BT) BEARS S65°E, 14.52 FEET DEAD; MAPLE 5" DIA (CSBT) BEARS N59°E, 15.38 FEET; FIR 30" DIA (CSBT) BEARS S64°W, 10.69 FEET.
- [10] BENTON COUNTY SURVEY NO. 2443 BY CURTIS C. HANSON, C.S., DATED DECEMBER 13, 1952. 5/8" IRON IN 3/4" PIPE. FIR 72" DIA (GLO BT) BEARS N22°E; FIR 30" DIA (CSBT) BEARS S64°W, 0.162 CHAINS (10.69 FEET); MAPLE 12" DIA (GLO BT) BEARS N57°W, 0.59 CHAINS (38.94 FEET); MAPLE 5" DIA (CSBT) BEARS N59°E, 0.233 CHAINS (15.38 FEET).
- [11] STARKER FORESTS INC. SURVEY FILES CONTAIN A BOUNDARY MAP BY ROY GILBERT, DATED AUGUST 22, 1964. 3/4" PIPE BENT. BT FIR STUMP 72" DIA (GLO BT) BEARS S65°E, 0.22 CHAINS (14.52 FEET); MAPLE 5" DIA (CSBT) BEARS N59°E, 0.233 CHAINS (15.38 FEET); FIR 30" DIA (CSBT) BEARS S64°W, 0.162 CHAINS (10.69 FEET).
- [12] STARKER FORESTS INC. SURVEY FILES CONTAIN A COPY OF BENTON COUNTY CORNER RESTORATION NO. 2696 WITH HAND WRITTEN NOTES DATED FEBRUARY, 10, 1976. FOUND AT CORNER 3/4" PIPE AND 5/8" ROD IN OLD SKID ROAD, BOTH BENT BUT APPARENTLY IN PLACE. FIR 72" DIA (GLO BT) ROTTEN STUB ±30' TALL; MAPLE 12" DIA (GLO BT) NOW MAPLE CLUMP; W. FIR 30" DIA (CSBT) ROTTEN WINDFALL; AND FIR 30" DIA 40' SNAG (CRUISER MARKS ON BARK PLAINLY VISIBLE).
- [13] BENTON COUNTY SURVEY NO. 6083 BY FRED I. LEMKE, P.L.S., DATED MARCH 29, 1976. FOUND 5/8" ROD IN 3/4" PIPE IN BADLY CORRODED CONDITION. REPLACED WITH 2-3/4" BRASS CAP ON 2" PIPE BY 4" X 4" WHITE POST FROM WHICH ORIGINAL BT 30' HIGH 77" DIA FIR SNAG BEARS S65°E, 14.52 FEET; C.S. BT 35' HIGH 38" DIA FIR SNAG BEARS S69°W, 10.69 FEET; C.S. BT 27" DIA MAPLE CLUMP BEARS N57°W, 39.9 FEET; C.S. BT 25" DIA MAPLE BEARS N69°E, 15.4 FEET. MARKED NEW BT 16" DIA N. FIR BEARS S75°W, 6.7 FEET; MARKED NEW BT 40" DIA N. FIR BEARS S30°E, 71.9 FEET.

DATE 04/11/2013

- [14] STARKER FORESTS INC. SURVEY FILES CONTAIN A SECTION PLAT SHEET, UNKNOWN DRAFTSMAN AND DATE. **1976 BRASS CAP WITH WHITE POST. BTS D. FIR 24" DIA BEARS S75°W, 0.13 CHAINS (8.58 FEET); MAPLE 40" DIA (CSBT) BEARS N65°E, 14.9 FEET; MANY STEM MAPLE N57°W, 40 FEET; D. FIR STUMP 38" DIA BEARS S30°E, 72 FEET.**
- [15] STARKER FORESTS INC. SURVEY FILES CONTAIN A LINE POSTING SURVEY FOR STARKER FORESTS INC. BY JIM S. PETERSON, P.L.S., DATED JUNE 6, 2008. **FOUND 1976 BRASS CAP AS PER C.S. 6083. ROTTED FIR SNAG 72" DIA (GLO BT) BEARS S65°E, 22 LINKS (14.52 FEET) NO MARKS VISIBLE; MAPLE CLUSTER 30" DIA (GLO BT) BEARS N57°W, 59 LINKS (38.94 FEET) NO MARKS VISIBLE; ROTTED MAPLE UPROOT 24" DIA (CSBT) BEARS N59°E, 0.223 CHAINS (14.72 FEET) NO MARKS VISIBLE; ROTTED FIR STUMP (CSBT) S64°W, 0.162 CHAINS (10.69 FEET) NO MARKS VISIBLE; W. FIR 34" DIA BEARS S75°W, 6.7 FEET HEALED FACE; W. FIR STUMP 40" DIA BEARS S30°E, 71.9 FEET NO MARKS VISIBLE. CORNER LIES ON NORTH SLOPE.**

FIRM/AGENCY: BENTON COUNTY SURVEYOR'S OFFICE
ADDRESS: 360 S.W. AVERY AVE. CORVALLIS OR 97333; PH. 766-6821
RESEARCH BY: DAVID L. MALONE, P.L.S.
DATA ENTRY BY: SAME

BENTON COUNTY CORNER RESTORATION FORM, PAGE 1 OF 3, 148300400R2
SEE CORNER HISTORY FORM FOR RECORDS ETC.

CORNER RESTORATION FIELD BOOK NUMBER 29 PAGE(S) 38 DATE 04/12/2013
TOWNSHIP 14 SOUTH, RANGE 8 WEST, WILLAMETTE MERIDIAN; SECTION 16 CORNER SOUTHWEST
DONATION LAND CLAIM NONE CORNER N/A
CONDITION REPORT ; REFERENCED OUT X; RENEWED ; SURVEYED IN

LOCATION AND COMMENTS:

CORNER IS LOCATED ON A NORTHWEST FACING SLOPE IN A SCATTERING OF HARDWOODS AND CONIFERS WITH RECENT CLEAR CUTS TO THE NORTHWEST AND SOUTHEAST. TO REACH CORNER FROM THE INTERSECTION OF HIGHWAY 34 AND SALMONBERRY ROAD, DRIVE SOUTHEASTERLY ALONG SALMONBERRY ROAD 0.33 MILES TO THE DRIVEWAY APPROACH AT 16707 SALMONBERRY ROAD ON THE LEFT. DRIVE ALONG DRIVEWAY 0.12 MILES TO A SPUR ROAD ON THE RIGHT. DRIVE RIGHT THROUGH STARKER GATE 0.14 MILES AND STAY LEFT AT Y JUNCTION. CONTINUE 0.30 MILES AND PARK AT Y JUNCTION BEFORE CROSSING SECTION LINE. WALK APPROXIMATELY 300 FEET EAST TO CORNER. CORNER IS BAD FOR PREMARKING AND GPS CONTROL.

MONUMENTS AND ACCESSORIES FOUND (CONDITION AND SOURCE):

1. FOUND 2-3/4" BRASS DISK CEMENTED IN 2" IRON PIPE, 3" ABOVE GROUND LEVEL, UNDISTURBED AND FIRMLY SET FOR CORNER POSITION, AND MARKED AS SHOWN ON PAGE 3 OF 3.
(SET POST PER RECORD [01]).
(SET MAPLE POST 4 FEET LONG, 4 INCHES SQUARE, 24 INCHES IN THE GROUND MARKED "T14S S16" ON THE NORTHEAST FACE, "R8W S21" ON THE SOUTHEAST FACE, "S20" ON THE SOUTHWEST FACE AND "S17" ON THE NORTHWEST FACE WITH 4 NOTCHES ON THE EAST EDGE AND 3 NOTCHES ON THE SOUTH EDGE PER RECORD [02]).
(SET 5/8" IRON ROD IN 3/4" PIPE PER RECORDS [03] AND [04]).
(5/8" IRON IN 3/4" PIPE PER RECORDS [07], [08] AND [10]).
(FOUND 5/8" IRON IN 3/4" IRON PIPE PER RECORDS [09]).
(3/4" PIPE BENT PER RECORD [11]).
(FOUND AT CORNER 3/4" PIPE AND 5/8" ROD IN OLD SKID ROAD, BOTH BENT BUT APPARENTLY IN PLACE PER RECORD [12]).
(FOUND 5/8" ROD IN 3/4" PIPE IN BADLY CORRODED CONDITION. REPLACED WITH 2-3/4" BRASS CAP ON 2" PIPE PER RECORD [13]).
(1976 BRASS CAP PER RECORDS [14] AND [15]).
2. FOUND 12' FOOT TALL ROTTEN 72" DIA D. FIR STUMP BEARS S65°00'E, 15.00 FEET TO REMAINS OF A POSSIBLE FACE. BASIS OF BEARINGS FOR THIS RESTORATION.
(FIR 72" DIA BEARS S65°E, 22 LINKS [14.52 FEET] PER RECORD [01]).
(RED FIR 72" DIA BEARS S65°E, 22 LINKS [14.52 FEET] MARKED "T14SR8WS21BT" PER RECORD [02]).
(FIR 72" DIA BEARS S65°E, 0.22 CHAINS [14.52 FEET] PER RECORD [03]).
(FIR 72" DIA BEARS S65°E, 22 LINKS [14.52 FEET] STANDING PER RECORD [04]).
(FIR 72" DIA BEARS S65°E, 0.22 CHAINS [14.52 FEET] STANDING DEAD PER RECORD [07]).
(FIR 72" DIA BEARS N22°E (SIC), STANDING DEAD PER RECORD [08]).
(FIR 72" DIA BEARS S65°E, 14.52 FEET DEAD PER RECORD [09]).
(FIR 72" DIA BEARS N22°E PER RECORD [10]).
(FIR STUMP 72" DIA BEARS S65°E, 0.22 CHAINS [14.52 FEET] PER RECORD [11]).
(FIR 72" DIA ROTTEN STUB ±30' TALL PER RECORD [12]).
(30' HIGH 77" DIA FIR SNAG BEARS S65°E, 14.52 FEET PER RECORD [13]).
(ROTTED FIR SNAG 72" DIA BEARS S65°E, 22 LINKS [14.52 FEET] NO MARKS VISIBLE PER RECORD [15]).
3. FOUND MANY TRUNKED MAPLE CLUMP BEARS N60°26'W, 40.32 FEET TO FRONT EDGE OF TREE. SET ALUMINUM NAIL AND PLASTIC WASHER IN FRONT EDGE FOR ANGLE AND DISTANCE MEASUREMENT.
(MAPLE 12" DIA BEARS N57°W, 59 LINKS [38.94 FEET] PER RECORD [01]).
(MAPLE 12" DIA BEARS N57°W, 59 LINKS [38.94 FEET] MARKED "T14SR8WS17BT" PER RECORD [02]).
(MAPLE 12" DIA BEARS N57°W, 0.59 CHAINS [38.94 FEET], 0.605 CHAINS [39.93 FEET] LOG ON UPSIDE PER RECORD [03]).
(MAPLE 12" DIA BEARS N57°W, 59 LINKS [38.94 FEET] STANDING, 60.5 LINKS [39.93 FEET] TO NAIL, LOG ON UPPER SIDE PER RECORD [04]).
(MAPLE 12" DIA BEARS N57°W, 0.59 CHAINS [38.94 FEET], 0.605 CHAINS [39.93 FEET] TO LINE PER RECORD [07]).
(MAPLE 12" DIA BEARS N57°W, 0.59 CHAINS [38.94 FEET] STANDING, 0.605 CHAINS [39.93 FEET] TO LINE PER RECORD [08]).
(MAPLE 12" DIA BEARS N57°W, 0.59 CHAINS [38.94 FEET] PER RECORD [10]).
(MAPLE 12" DIA NOW MAPLE CLUMP PER RECORD [12]).
(27" DIA MAPLE CLUMP BEARS N57°W, 39.9 FEET PER RECORD [13]).
(MANY STEM MAPLE N57°W, 40 FEET PER RECORD [14]).
(MAPLE CLUSTER 30" DIA BEARS N57°W, 59 LINKS [38.94 FEET] NO MARKS VISIBLE PER RECORD [15]).
4. FOUND 30" DIA MAPLE SNAG LEANING NORTHEAST BEARS N58°57'E, 15.53 FEET TO FRONT EDGE OF TREE.
(MARKED MAPLE 5" DIA BEARS N45°E, 25 LINKS [16.50 FEET] MARKED "T14SR8WS16BT" PER RECORD [02]).
(MAPLE 5" DIA BEARS N59°E, 0.233 CHAINS [15.38 FEET] PER RECORDS [03], [07], [08], [10] AND [11]).
(MAPLE 5" DIA BEARS N59°E, 15.38 FEET PER RECORD [09]).
(25" DIA MAPLE BEARS N69°E, 15.4 FEET PER RECORD [13]).
(MAPLE 40" DIA BEARS N65°E, 14.9 FEET PER RECORD [14]).
(ROTTED MAPLE UPROOT 24" DIA BEARS N59°E, 0.223 CHAINS [14.72 FEET] NO MARKS VISIBLE PER RECORD [15]).

BENTON COUNTY CORNER RESTORATION FORM, PAGE 2 OF 3, 148300400R2

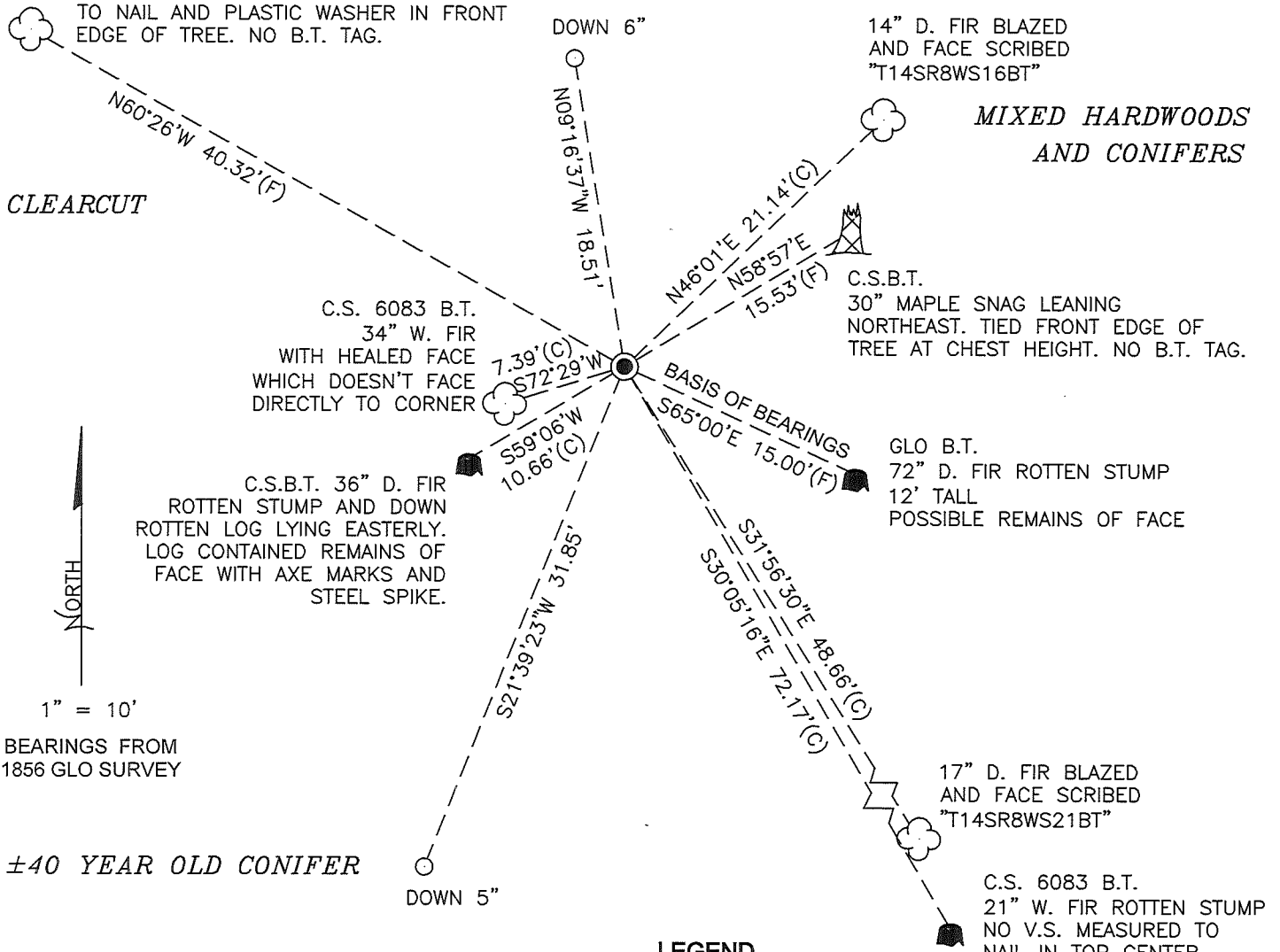
5. FOUND ROTTEN 36" DIA D. FIR STUMP BEARS S59°06'W, 10.66 FEET TO CENTER. A ROTTEN LOG LYING NORTHEASTERLY OF THE STUMP WAS SEARCHED AND A STEEL SPIKE AND THE REMAINS OF A FACE WITH AXE MARKS WAS FOUND.
(FIR 30" DIA BEARS S64°W, 0.162 CHAINS [10.69 FEET] TO SPIKE SOUTHEAST PER RECORDS [03], [07] AND [08]).
(W. FIR 30" DIA BEARS S64°W, 16.2 LINKS [10.69 FEET] TO SPIKE SOUTHEAST PER RECORD [04]).
(FIR 30" DIA BEARS S64°W, 10.69 FEET PER RECORD [09]).
(FIR 30" DIA BEARS S64°W, 0.162 CHAINS [10.69 FEET] PER RECORDS [10] AND [11]).
(W. FIR 30" DIA ROTTEN WINDFALL PER RECORD [12]).
(35' HIGH 38" DIA FIR SNAG BEARS S69°W, 10.69 FEET PER RECORD [13]).
(ROTTED FIR STUMP BEARS S64°W, 0.162 CHAINS [10.69 FEET] WITH NO MARKS VISIBLE PER RECORD [15]).
6. FOUND ROTTEN 21" DIA W. FIR STUMP WITH NO VISIBLE SCRIBING BEARS S30°05'16"E, 72.17 FEET TO CENTER.
(MARKED N. FIR 40" DIA BEARS S30°E, 71.9 FEET PER RECORD [13]).
(D. FIR STUMP 38" DIA BEARS S30°E, 72 FEET PER RECORD [14]).
(W. FIR STUMP 40" DIA BEARS S30°E, 71.9 FEET NO MARKS VISIBLE PER RECORD [15]).
7. FOUND 34" DIA W. FIR WITH HEALED FACE BEARS S72°29'W, 7.39 FEET TO CENTER. HEALED FACE DOES NOT DIRECTLY FACE MONUMENT AT CORNER POSITION. SET ALUMINUM NAIL AND PLASTIC WASHER IN SOUTHEASTERLY BASE FOR DISTANCE MEASUREMENT.
(MARKED N. FIR 16" DIA BEARS S75°W, 6.7 FEET PER RECORD [13]).
(D. FIR 24" DIA BEARS S75°W, 0.13 CHAINS [8.58 FEET] PER RECORD [14]).
(W. FIR 34" DIA BEARS S75°W, 6.7 FEET HEALED FACE PER RECORD [15]).

MONUMENT SET (PROCEDURES AND DESCRIPTION):

AT THE CORNER I FOUND A 2-3/4" BRASS DISK CEMENTED IN A 2" IRON PIPE FIRMLY SET IN THE GROUND, UNDISTURBED, AND IN GOOD CONDITION. THIS WAS SET AS A PERPETUATION OF A 5/8" IRON ROD IN A 3/4" IRON PIPE SET BY W. C. GALLOWAY, C.S., FROM GLO BEARING TREES. I HELD THE 2-3/4" BRASS DISK FOR THE CORNER POSITION.

THE BRASS DISK HELD FOR THE CORNER POSITION WAS MARKED AS SHOWN ON PAGE 3 OF 3. SET TWO NEW IRON ROD ACCESSORIES AND SCRIBED TWO NEW BEARING TREES AS SHOWN ON PAGE 3 OF 3. SET A 6 FOOT ORANGE CARSONITE "SURVEY MARKER" POST 1 FOOT NORTH OF CORNER.

MANY TRUNKED MAPLE CLUMP IN PLACE OF GLO B.T. AND C.S.B.T. MEASURED TO NAIL AND PLASTIC WASHER IN FRONT EDGE OF TREE. NO B.T. TAG.



CLEARCUT

MIXED HARDWOODS AND CONIFERS



1" = 10'

BEARINGS FROM 1856 GLO SURVEY

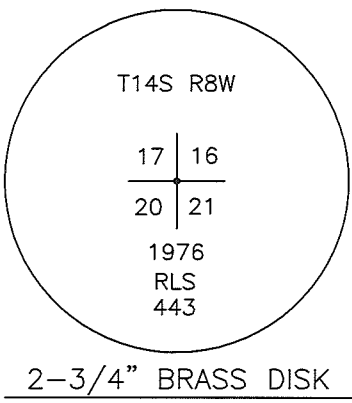
±40 YEAR OLD CONIFER

LEGEND

- SET 5/8" X 30" REBAR WITH YELLOW PLASTIC CAP MARKED "BENTON COUNTY SURVEYOR"
- (F) MEASUREMENT TO FACE
- (C) MEASUREMENT TO CENTER
- GOVERNMENT MONUMENT FOUND AS SHOWN
- V.S. VISIBLE SCRIBING
- C.S. COUNTY SURVEY
- C.S.B.T. COUNTY SURVEYOR'S BEARING TREE
- GLO GENERAL LAND OFFICE
- B.T. BEARING TREE
- BEARING TREE STUMP AS NOTED
- ☁ BEARING TREE AS NOTED
- ⚡ BEARING TREE SNAG AS NOTED

CLEARCUT

MONUMENT DETAIL



NEW ACCESSORIES:

1. SET REBAR (SEE LEGEND) S21°39'23"W, 31.85 FEET AND 5 INCHES BELOW GROUND LEVEL.
2. SET REBAR (SEE LEGEND) N9°16'37"W, 18.51 FEET AND 6 INCHES BELOW GROUND LEVEL.
3. 14" DIA D. FIR N46°01'E, 21.14 FEET TO CENTER, FACE SCRIBED "T14SR8WS16BT". SET ALUMINUM NAIL AND PLASTIC WASHER IN SOUTHEASTERLY BASE FOR DISTANCE MEASUREMENT.
4. 17" DIA D. FIR S31°56'30"E, 48.66 FEET TO CENTER, FACE SCRIBED "T14SR8WS21BT". SET ALUMINUM NAIL AND PLASTIC WASHER IN NORTHEASTERLY BASE FOR DISTANCE MEASUREMENT.

NOTES:

COMPASS DECLINATION IS 20° EAST. ALL MEASURED DISTANCES AND BEARINGS ARE TO THE CENTER OF THE OBJECT, UNLESS OTHERWISE NOTED. ALL BEARING TREES ARE PAINTED AND HAVE A B.T. TAG ATTACHED, FACING THE CORNER UNLESS OTHERWISE NOTED. ALL NEW BEARING TREES HAVE A PLASTIC WASHER (STAMPED "SURVEY MARKER DO NOT REMOVE") ATTACHED BY AN ALUMINUM NAIL TO THE SIDE CENTER OF THE TREE FOR DISTANCE MEASUREMENT, UNLESS OTHERWISE NOTED.

THIS RESTORATION WAS PERFORMED AT THE DIRECTION AND APPROVAL OF THE BENTON COUNTY SURVEYOR *Jlm*

REGISTERED PROFESSIONAL LAND SURVEYOR

FIRM/AGENCY: BENTON COUNTY SURVEYOR'S OFFICE
 ADDRESS: 360 S.W. AVERY AVE. CORVALLIS, OR. 97333; PH. 766-6821
 PRESENT: DAVID L. MALONE, P.L.S. AND BERNARD ALTENBACH, SURVEY TECH.
 EQUIPMENT: NIKON NIV03.C WITH SURVEY PRO ONBOARD

4-25-2013 *David L. Malone*

OREGON
JANUARY 12, 1999
DAVID L. MALONE
51523

RENEWAL DATE: 12/31/14

CORNER RESTORATION BOOK NO. 1

County Survey 362
 Set June 3, 1937
 by W.C. Galloway
 witness
 R. J. Stewart

Corner to Secs. 17, 18, 19 & 20 T 14-8
 Set a 3/4" x 1 1/2" iron (Wagon hub/lor plate) from
 Fir stump S. 9° W. 78 links
 Stump hole S 85° W. 33 " deep hole
 " " N. 40° W. 27 " "
 " " N 60° E 49 " "
 Marked fir 70" in dia. bears N. 10° 56' E. 5.125 chs. = 5117
 " " 32" " " " N. 72° 22' E. 3.323 chs.
 " forked oak 14" 1/4" " " S. 41° 47' E 4.030 " set nkd. E at base
 Fence S. 10 lks. and fence E. 25 lks.

same as above

1/4 Sec. Corner between secs. 17 & 20 T. 14-8
 Set a channel iron from
 Ash 10" in dia. bears N. 14° W. 41 lks. std.
 " 9" " " " S. 57° E 56 " lying down
 Mkd. fir 48" " " " N 88° E 89.7 "

Witnesses
 R. J. Stewart
 and A.H. Pooge
 June 14, 1937.

1/4 Sec. Corner between Secs. 20 & 21 T. 14-8
 Set a 3/4" iron rod 24" long from
 Hemlock 6" (now 20") S. 75° W. 30 links (chitem down)
 Marked a fir 32" in dia. bears S 12° 12' W. 87.4 lks. = .658 chs.

Witnesses
 Rudolph Stewart
 June 15, 1937

Corner to Sections 16, 17, 20 and 21 T. 14 S. R. 8 W
 Set a 5/8" iron rod in a 3/4" pipe from
 Fir 72" in dia. bears S. 65° E 22 links std
 Maple 12" " " " N. 57° W. 59 " " 40.5 to nail, lay on
 " " " " " " " " " " upper side.
 W. fir 30" " " " S. 68° W. 46 " down, stump hole good
 " 30" " " " S. 64° W. 16.2 " to spike S.E.

Witnesses
 R. J. Stewart
 and
 Adrian H. Soils.
 Oct. 22, 1937

1/4 sec. corner between secs. 21 & 22 T. 14-8
 Set 1 1/4" pipe from
 Fir 24" in dia. bears N. 86° 30' E. 42 links, stump
 " 50" " " " East 05 " " hole
 Marked fir 48" " " " N. 19° E. 190 links Nail for measure in W.
 " " 36" " " " N. 41 1/2° W. 53.0 links, Nail S.W.

Witnesses
 R. J. Stewart
 and Cornea Schulaurich

Corner to Sections 21, 22, 27 & 28 T. 14-8
 Set 1 1/2" heavy pipe 24" long from
 Fir 20" in dia. bears N. 48° E. 11 links std. dead
 " 30" " " " S. 6° E. 128 " " forked and burned betw
 " 18" " " " S. 84° W. 73 " " "
 " 24" " " " N. 72° 20' W. 116 " "

C.S. #90
 by J.A. Ganong
 Aug. 1909
 Claude Buchanan
 witness

N.W. Corner of John Proctor D.L.C. #52 T13-5
 Set a 1 1/4" Pipe
 Mkd. an oak 10" in dia. bears N. 35° E. 111
 " 12" " " " N. 88° E. 225
 " 10" " " " S. 64 1/4° E. 23

2696

Corner to sections 16, 17, 20 and 21, Twp. 14 S., R. 8 W.

Reestablishment by W. C. Galloway

June 15, 1937

Set a 5/8" iron rod in a 3/4" pipe

Fir 72" in diam bears S 65° E 22 links

Maple 12" in diam bears N 57° W 59 links

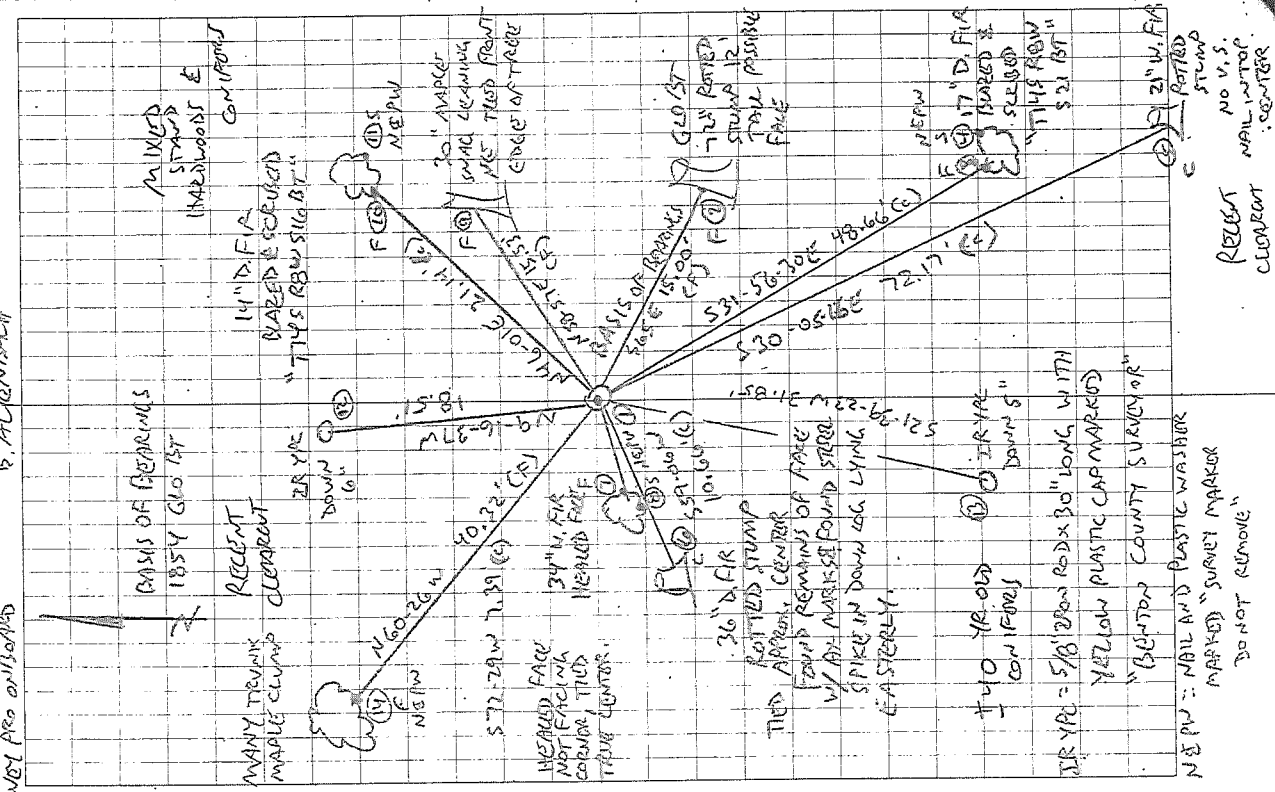
W. Fir 30" in diam bears S 68° W 46 links

Fir 30" in diam bears S 64° W 16.2 links

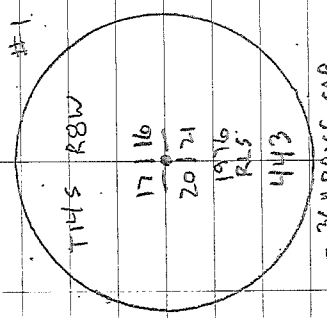
Witness Rudolph Stewart

29/38

COOL, CLOUDY
 4/12/13
 D. MILONE
 B. ALDENBAEH
 SURVEY PRO ENFORCED



148300400
 REFERENCING SW SEC 16, T14S, R8W
 FD 2-3/4" BRASS CAP IN 2" DRON PIPE UP 3" AS PER
 C.S. 6083. MONUMENT IN GOOD CONDITION, UNDISTURBED,
 AND HELD FOR CORNER POSITION, MARKED AS SHOWN
 BELOW. FD ROTTEN STUB OF SE GLO BT W/ POSSIBLE
 FACE. HOLD FOR BASIS OF BEARINGS FD MAPLE CLUMP
 AT POSITION OF NW GLO BT. FD CS BT NE MAPLE NOW
 A ROTTEN SNAG LEANING NE. FD SW CS BT ROTTEN FIR
 STUMP AND LOC. FD NAIL AND REMAINS OF FACE WITH
 AT MARKS W LOC. FD SE CS 6083 BT ROTTEN STUMP.
 FD SW CS 6083 BT W/ HEALED FACE. SET 2 NEW
 IRAN ROD ACCESSORIES AND BEARED AND SCROB
 2 NEW BEARING TRAILS, SET TO ORANGE CARBONITE
 "SURVEY MARKER" POST 1' NORTH OF CORNER.



7-3/4" BRASS CAP