

CORNER FILE TRACKING

H:\Survey\Corners\Misc\Filetrac.doc

11/23/98

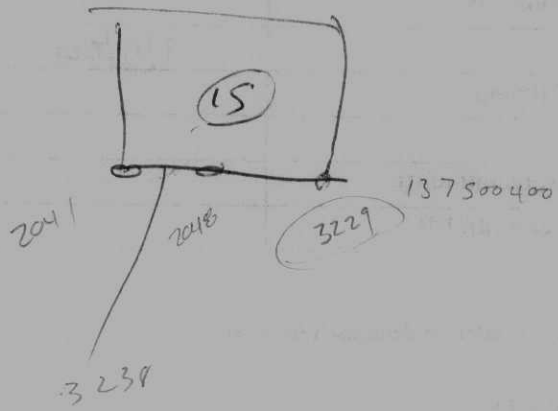
CORNER NUMBER
148500400

STEP	HISTORY()	RESTORATION()
Form Prepared, DB	6/1/06	8/22/06
Field Inspection, DB	8/17/06	8/17/06
Form Checked, DB	9/6/06	9/6/06
Form Edited, DB	9/6/06	9/6/06
Form Signed, DB		
Counter Index	8/17/06	8/17/06
GIS Index	8/22/06	8/22/06
Authorize Payment, DB	—	—
Archive Digital Files	9/6/06	9/6/06
Collect Documents	8/22/06	8/22/06
Scanned	9/11/06	9/11/06
Copy For Filming		
Filed, DB		
Finish index (count unit)	8/17/06	8/17/06
Filmed (Archived), DB		

(DB) = Entry needed in database (Access).

COMMENTS:

13-9



DATE 06/01/2006TOWNSHIP 14 SOUTH, RANGE 08 WEST, WILLAMETTE MERIDIAN, SECTION 14 CORNER SOUTHWEST
DONATION LAND CLAIM N/A CORNER N/A**COMMON CORNER(S):**SOUTHEAST OF SECTION 15
NORTHEAST OF SECTION 22
NORTHWEST OF SECTION 23**RECORDS (INFORMATION IN BOLD ITALICS IS COUNTY STAFFS' INTERPRETATION OF THE RECORD)**

BASED ON EXTENSIVE RESEARCH AND RECOVERY OF EVIDENCE, THIS OFFICE HAS DETERMINED THAT MOST GENERAL LAND OFFICE SURVEYORS MEASURED TO THE FACE OF BEARING TREES

- [01] GENERAL LAND OFFICE (GLO) NOTES BY D HATHORN, D S , DATED JULY 3, 1856 SET A POST. MARKED A 50" FIR N50°E 108 LKS. (71.28 FT.), A 50" FIR S22°E 225 LKS. (148.50 FT.), A 12" FIR S88 1/2°W 285 LKS. (188.10 FT.) AND A 15" FIR N89 1/2°W 273 LKS. (180.18 FT.)
- [02] BUREAU OF LAND MANAGEMENT (BLM) DEPENDENT RESURVEY BY JOSEPH GAWRON, CADASTRAL SURVEYOR, DATED APRIL 30, 1959 SET A 2 1/2" X 28" IRON POST, 24" IN THE GROUND, WITH A BRASS CAP. FOUND A 60" FIR (GLO BT) S22°E 225 LKS. (148.50 FT.), A 20" BURNT FIR STUMP (GLO BT) S88 1/2°W 285 LKS (188.10 FT.), WITH NO MARKS REMAINING AND A 30" SHATTERED FIR STUMP (GLO BT) N89 1/2°W 273 LKS. (180.18 FT.), WITH "BT" AND OTHER ILLEGIBLE SCRIBE MARKS EXPOSED. MARKED A 4" FIR N21°E 130 LKS. (85.80 FT.), MARKED "XBT", A 30" MAPLE S28 3/4°E 156 LKS. (102.96 FT.), MARKED "T14SR8WS23BT", A 32" FIR S12 1/4°W 376 LKS. (248.16 FT.), MARKED "T14SR8WS22BT" AND A 10" FIR N44°W 144 LKS. (95.04 FT.), MARKED "T14SR8WS15BT".
- [03] COUNTY SURVEY NO 5845 BY ARTHUR MOSHER, P L S , DATED DECEMBER 1974 AND JANUARY 1975 FOUND BC.
- [04] CORNER RESTORATION NO 3308 BY JOHN RINALDI JR , P L S , DATED JANUARY 17, 1985 FOUND A 3" BRASS CAP ON A 2 1/2" O. D. IRON PIPE AT THE NORTH EDGE OF A RECENT TIMBER CLEAR CUT. FOUND A 7'X5' CHARRED DOUG. FIR STUMP (GLO BT) S22°E 147.10 FT., WITH OPEN BLAZE AND EVIDENCE OF SCRIBING AND A 24"X6' DOUG. FIR STUMP (GLO BT) N89°30'W NO DISTANCE MEASURED, WITH OPEN BLAZE AND B.L.M. TAG. MARKED A 4" WHITE OAK N36°12'E 25.20 FT., BLAZED AND SCRIBED "X" AND A 11" DOUG. FIR N84°36'E 86.90 FT., BLAZED AND SCRIBED "BT".
- [05] COUNTY SURVEY NO 9272 BY JIM PETERSON, P L S , DATED JANUARY 26, 1998 FOUND 3" B.L.M. BRASS CAP (1959). FOUND A 4" OAK (CSBT) N36°12'E 25.20 FT., WITH SCRIBING VISIBLE, A 16" FIR (CSBT) N84°36'E 86.90 FT., WITH HEALED FACE AND AN 80" FIR STUMP (GLO BT) S22°E 147.10 FT., WITH OPEN BLAZE. CORNER LIES 50' WEST OF A GRAVEL ROAD.

COMMENTS/LOCATION/ETC:**NOTES:**

THIS IS A MICROSOFT WORD 2000 DOCUMENT NAMED "48500400" CREATED FROM A BOILER PLATE DOCUMENT NAMED "HISTORY", WHICH HAS A STYLESHEET NAMED "CORNER" ATTACHED TO IT

FIRM/AGENCY: BENTON COUNTY SURVEYOR'S OFFICE
ADDRESS: 360 S W AVERY AVE CORVALLIS OR 97333, PH 766-6821
RESEARCH BY: BERNARD S ALTENBACH, ENGINEER/SURVEY TECH
DATA ENTRY BY: SAME

BENTON COUNTY CORNER RESTORATION FORM, PAGE 1 OF 2, 148500400R2**SEE CORNER HISTORY FORM FOR RECORDS ETC.**

CORNER RESTORATION FIELD BOOK NUMBER 24 PAGE(S) 42 DATE 08/17/2006
 TOWNSHIP 14 SOUTH, RANGE 8 WEST, WILLAMETTE MERIDIAN; SECTION 14 CORNER SOUTHWEST
 DONATION LAND CLAIM NONE CORNER N/A
 CONDITION REPORT _____; REFERENCED OUT XX; RENEWED _____; SURVEYED IN _____

LOCATION AND COMMENTS.

CORNER IS LOCATED ON A GENTLE SOUTHEASTERLY FACING SLOPE WITH ±3 YEAR OLD D FIR PLANTATION TO THE NORTH AND ±30 YEAR OLD TIMBER TO THE SOUTH TO REACH CORNER FROM THE JUNCTION OF ALSEA-DEADWOOD HIGHWAY AND HAINES ROAD, TRAVEL WESTERLY AND SOUTHERLY ON HAINES ROAD FOR 1.07 MILES TO END OF COUNTY MAINTAINENCE, THEN CONTINUE ON GRAVEL ROAD TO SOUTHWEST FOR 0.54 MILES TO "Y" JUNCTION, THEN BEAR RIGHT AND CONTINUE ON GRAVEL ROAD FOR 0.45 MILES TO "Y" JUNCTION, THEN LEFT ON GRAVEL SPUR FOR 0.03 MILES TO "Y" JUNCTION, THEN RIGHT ON GRAVEL SPUR (PASSING THROUGH STARKER FOREST GATE) FOR 0.43 MILES TO 23" D FIR BEARING TREE ON LEFT SIDE OF ROAD, THEN S85°W, 87 FEET TO CORNER CORNER IS POOR FOR PREMARKING AND GPS CONTROL

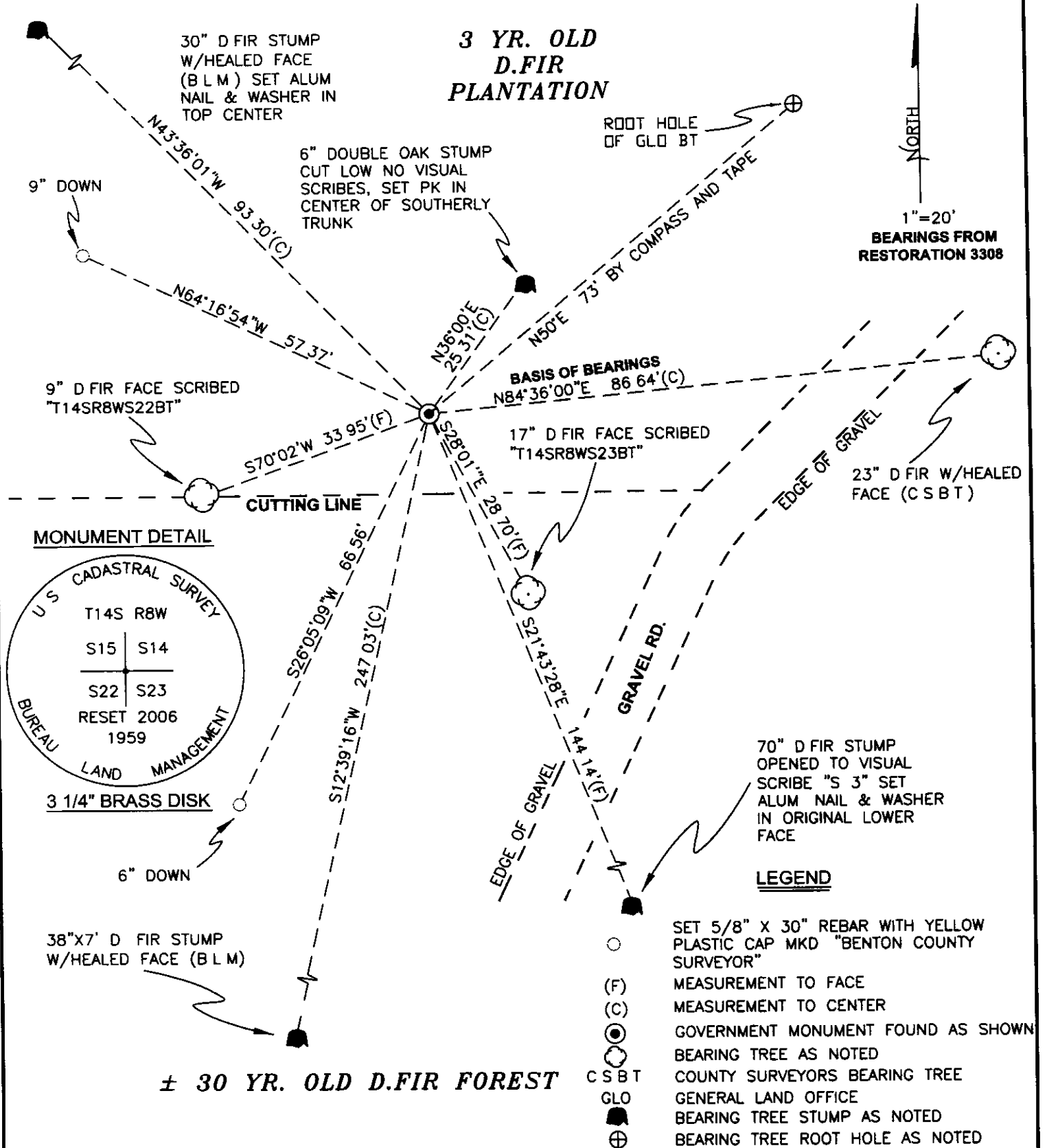
MONUMENTS AND ACCESSORIES FOUND (CONDITION AND SOURCE).

- 1 FOUND 3 1/4" BRASS CAP ON 2 1/2" OUTSIDE DIAMETER X 28" LONG IRON PIPE WITH FLARRED BOTTOM, 3" ABOVE GROUND LEVEL, TIPPED SOUTHWESTERLY 0.9 FEET AND MARKED AS SHOWN ON PAGE 2 OF 2(SEE BELOW PROCEDURES) FOR CORNER POSITION
 (SET 2 1/2" X 28" IRON POST, 24" IN GROUND WITH BRASS CAP, BY RECORD BEARING AND DISTANCE FROM 3 GLO BEARING TREE STUMPS, PER RECORD [02])
 (FOUND BRASS CAP PER RECORD [03])
 (FOUND 3" BRASS CAP ON 2 1/2" OUTSIDE DIAMETER IRON PIPE PER RECORD [04])
 (FOUND 3" B L M BRASS CAP PER RECORD [05])
- 2 FOUND ±70" D FIR STUMP, S21°43'28"E, 144.14 FEET TO ORIGINAL FACE WE OPENED STUMP TO VISIBLE UPPER SCRIBING "S 8 3" AND OTHER ILLEGIBLE SCRIBE MARKS OPENED LOWER FACE TO BURNED FLAT FACE WITH NO VISIBLE SCRIBING REMAINING IT APPEARS THIS GLO ACCESSORY HAD SOME FIRE DAMAGE BEFORE THE FACES WERE HEALED OVER SET ALUMINUM NAIL AND PLASTIC WASHER IN LOWER FACE FOR DISTANCE AND ANGLE MEASUREMENT
 (MARKED 50" FIR, S22°E, 148.50 FEET PER RECORD [01])
 (60" FIR, S22°E, 148.50 FEET PER RECORD [02])
 (7 FOOT DIAMETER BY 5 FEET TALL CHARRED D FIR STUMP WITH EVIDENCE OF SCRIBINGS, S22°E, 147.1 FEET PER RECORD [04])
 (80" FIR STUMP, S22°E, 147.10 FEET PER RECORD [05])
- 3 FOUND ROOT HOLE, N50°E, 73 FEET TO CENTER OF HOLD BY COMPASS AND TAPE ONLY FOUND ±64" UPROOT D FIR SNAG LAYING SOUTHERLY OF ROOT HOLE SNAG WOULD BE LAYING ON ORIGINAL FACE AND WAS NOT OBSERVED OR OPENED BY US
 (MARKED 50" FIR, N50°E, 71.28 FEET PER RECORD [01])
- 4 FOUND 30" D FIR STUMP WITH HEALED FACE, N43°36'01"W, 93.30 FEET TO CENTER SET ALUMINUM NAIL AND PLASTIC WASHER IN TOP CENTER FOR DISTANCE AND ANGLE MEASUREMENT
 (MARKED 10" FIR "T14SR8WS15BT", N44°W, 95.04 FEET PER RECORD [02])
- 5 FOUND 38" X 7' HIGH D FIR STUMP WITH HEALED FACE, S12°39'16"W, 247.03 FEET TO CENTER SET ALUMINUM NAIL AND PLASTIC WASHER IN TOP CENTER FOR DISTANCE AND ANGLE MEASUREMENT
 (MARKED A 32" FIR "T14SR8WS22BT", S12 1/4°W, 248.16 FEET PER RECORD [02])
- 6 FOUND 23" D FIR WITH HEALED FACE, N84°36'00"E, 86.64 FEET TO CENTER SET ALUMINUM NAIL AND PLASTIC WASHER IN NORTHERLY BASE FOR DISTANCE MEASUREMENT **BASIS OF BEARINGS FOR THIS RESTORATION.**
 (BLAZED AND SCRIBED 11" D FIR "BT", N84°36'E, 86.90 FEET PER RECORD [04])
 (16" FIR, N84°36'E, 86.90 FEET WITH HEALED FACE PER RECORD [05])
- 7 FOUND 6" DOUBLE OAK STUMP, N36°00'E, 25.31 FEET TO CENTER OF SOUTHERLY TRUNK SET PK NAIL IN TOP CENTER OF STUMP FOR DISTANCE AND ANGLE MEASUREMENT TREE WAS CUT LOW TO GROUND AND NO VISIBLE FACE OR SCRIBING REMAINS
 (BLAZED AND SCRIBED 4" WHITE OAK "X", N36°12'E, 25.20 FEET PER RECORD [04])
 (4" OAK WITH VISIBLE SCRIBING, N36°12'E, 25.20 FEET PER RECORD [05])

MONUMENT SET (PROCEDURES AND DESCRIPTION).

NO NEW MONUMENT WAS SET THE TIPPED BLM MONUMENT AS NOTED IN NO 1 ABOVE WAS STRAIGHTENED, THEN THE DIRT AROUND MONUMENT WAS EXCAVATED AT 25" BELOW GROUND LEVEL, FOUND A RING OF 4" - 6" DIAMETER STONES AROUND SAID MONUMENT MONUMENT AND STONES WERE REMOVED AND WE FOUND RUST DEPOSITS MATCHING BOTH FLARED PORTIONS OR THE 2 1/2" IRON PIPE WE THEN RESET THE PIPE AND CAP IN A POSITION MATCHING BOTH RUST DEPOSITS TO DETERMINE THE FINAL POSITION MONUMENT WAS THEN LOWERED TO A POINT FLUSH WITH GROUND LEVEL SET 6 FOOT ORANGE CARSONITE "SURVEY MARKER" POST, 0.5 FEET SOUTH OF NEW MONUMENT

DISTANCES TO THE ONE REMAINING GLO ACCESSORY (70" D FIR STUMP) AND THE TWO REMAINING B L M ACCESSORIES (D FIR STUMPS) DO NOT AGREE WITH RECORD DATA RECORD [02] STATES, "CORNER POSITION WAS DETERMINED AT RECORD BEARING AND DISTANCE FROM EACH OF THE REMAINING ORIGINAL BEARING TREES", OF WHICH THREE WERE RECOVERED THE SOUTHWEST AND NORTHWEST GLO ACCESSORIES ARE NOW MISSING THE ONLY REMAINING GLO ACCESSORY IS THE SOUTHEAST BEARING TREE, NOW A 70" D FIR STUMP WITH VISIBLE SCRIBING THE DISTANCE TO THE ORIGINAL FACE OF THIS ACCESSORY DISCLOSES A 4+ FOOT DIFFERENCE COMPARED TO ORIGINAL GLO RECORD IF THE DISTANCE WAS TAKEN TO THE CENTER OF STUMP BY RECORD [02], THE COMPARISON TO ORIGINAL GLO RECORD WOULD BE WITHIN 2 FEET BASED ON THE ABSENCE OF ADDITIONAL GLO ACCESSORIES, WE HAVE DETERMINED TO HOLD THE POSITION OF RECORD [02] MONUMENT FOR THE CORNER POSITION



NEW ACCESSORIES

- 1 SET REBAR (SEE LEGEND) 6" BELOW GROUND LEVEL, S26°05'09"W, 66.56 FEET
- 2 SET REBAR (SEE LEGEND) 9" BELOW GROUND LEVEL, N64°16'54"W, 57.37 FEET
- 3 17" D FIR, FACE SCRIBED "T14SR8WS23BT" S28°01'E, 28.70 FEET TO NAIL AND WASHER IN FACE
- 4 9" D FIR, FACE SCRIBED "T14SR8WS22BT" S70°02'W, 33.95 FEET TO TO NAIL AND WASHER IN FACE

NOTES

COMPASS DECLINATION IS 20° EAST ALL MEASURED DISTANCES AND BEARINGS ARE TO THE CENTER OF THE OBJECT, UNLESS OTHERWISE NOTED ALL BEARING TREES ARE PAINTED AND HAVE A BT TAG ATTACHED, FACING THE CORNER UNLESS OTHERWISE NOTED ALL NEW BEARING TREES HAVE A PLASTIC WASHER (STAMPED "BENTON COUNTY SURVEYOR CORNER RESTORATION") ATTACHED (BY ALUMINUM NAIL) TO THE FACE, BELOW THE "BT" FOR DISTANCE AND ANGLE MEASUREMENT UNLESS OTHERWISE NOTED THE DRAWING IS FROM AUTOCAD RELEASE 2006

THIS RESTORATION WAS PERFORMED AT THE DIRECTION AND APROVAL OF THE BENTON COUNTY SURVEYOR

FIRM/AGENCY ADDRESS PRESENT EQUIPMENT BENTON COUNTY SURVEYOR'S OFFICE 360 SW AVERY AVE CORVALLIS OR 97333, PH 766-6821 DAVID M DEAN, PLS AND BRADLEY BOWSHER, SURVEY TECH LEICA TRC 1105 WITH TDS ON BOARD

9/6/06

REGISTERED PROFESSIONAL LAND SURVEYOR

David M. Dean
OREGON
JULY 13, 1984
DAVID M DEAN
2090

RENEWAL DATE 12/31/07

BENTON COUNTY SURVEYORS OFFICE - CORNER RESTORATION

3308

T. 14 S. R. 8 W. W B & M, BENTON COUNTY, OREGON

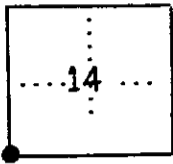
REPORTED BY JOHN RINALDI, JR.

SECTION 14

TITLE BENTON COUNTY SURVEY CREW CHIEF

DATE JANUARY 17, 1985

148500400



● OFFICIAL CORNER FOUND
○ CORNER SET

S.W. CORNER COMMON TO SEC. 14 15 22 & 23

IS DESCRIBE

ADDITIONAL INFORMATION

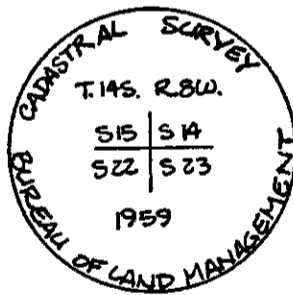
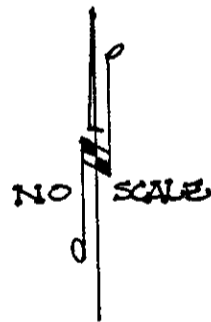
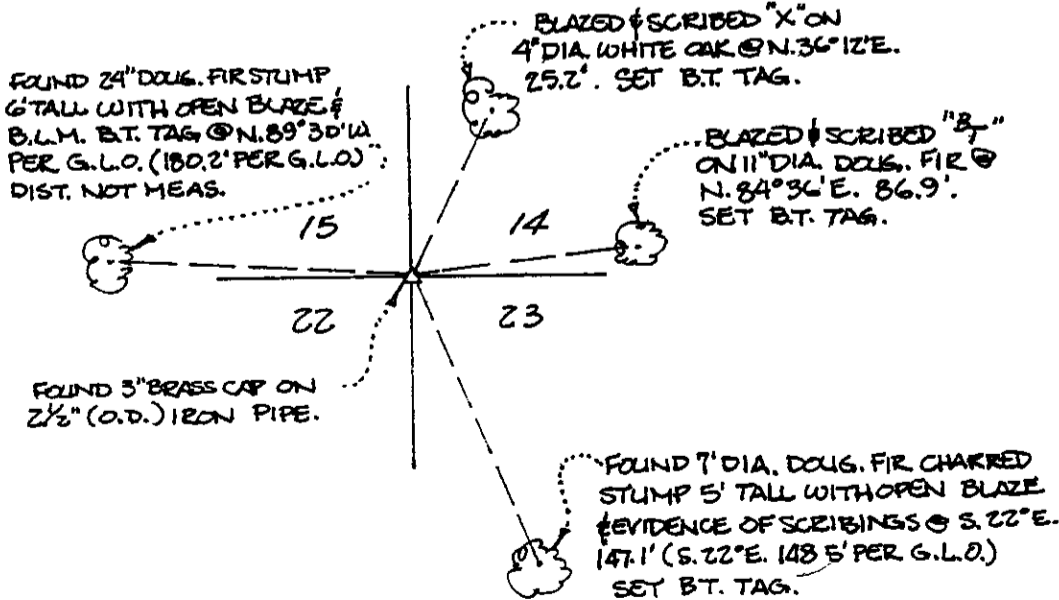
FOUND 3" BRASS CAP (SEE BRASS CAP DETAIL) ON 2 1/2" (O.D.) IRON PIPE @ NORTH EDGE OF RECENT TIMBER CLEAR CUT. (SEE REVERSE)

NOTE: THE MONUMENT FOR THIS CORNER WAS SET ON AUGUST 17, 1959 B.L.M. DEPENDENT RESURVEY.

LEGIBLE MARKS ON BEARING OBJECTS

	FOUND	FOUND	SET	SET
	OPEN BLAZE	OPEN BLAZE	X	B _T
KIND	DOUG. FIR STUMP	DOUG. FIR STUMP	WHITE OAK	DOUG. FIR
SIZE	7" DIA.	24" DIA.	4" DIA.	11" DIA.
BEARING	S. 22° E.	N. 89° 30' W.	N. 36° 12' E.	N. 84° 36' E.
DISTANCE	147.1'	(180.2')	25.2'	86.9'
BT TAG POSTED	YES	YES	YES	YES

OVER



BRASS CAP DETAIL

REGISTERED PROFESSIONAL LAND SURVEYOR
John Rinaldi, Jr.
OREGON JULY 15 1983
JOHN RINALDI, JR
2056

BENTON COUNTY SURVEYORS OFFICE - CORNER RESTORATION

3308

T. 14 S. R. 8 W. W. B. & M., BENTON COUNTY, OREGON

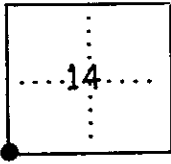
REPORTED BY JOHN RINALDI JR.

SECTION 14

TITLE BENTON COUNTY SURVEY CREW CHIEF

DATE JANUARY 17, 1985

148500400



- OFFICIAL CORNER FOUND
- CORNER SET

S.W. CORNER COMMON TO SEC. 14 15 22 & 23

IS DESCRIBE

ADDITIONAL INFORMATION

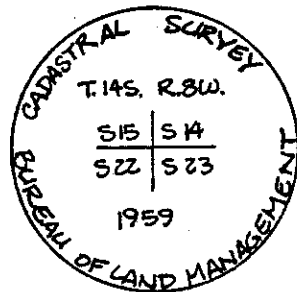
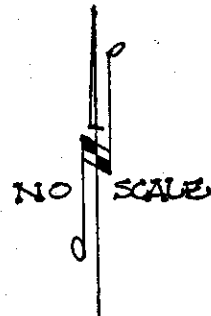
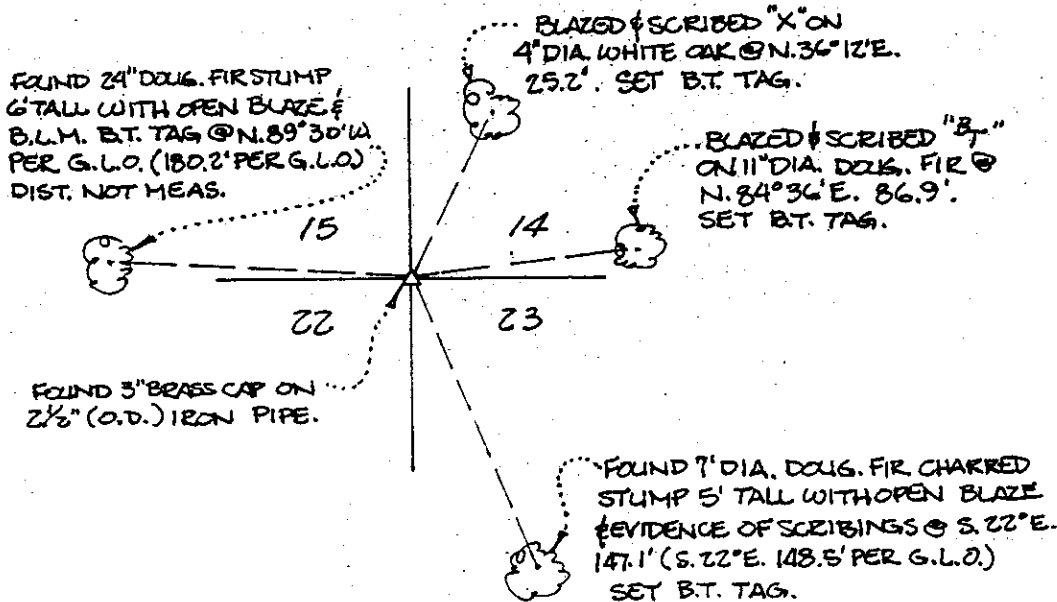
FOUND 3" BRASS CAP (SEE BRASS CAP DETAIL) ON 2 1/2" (O.D.) IRON PIPE @ NORTH EDGE OF RECENT TIMBER CLEAR CUT. (SEE REVERSE)

NOTE: THE MONUMENT FOR THIS CORNER WAS SET ON AN AUGUST 17, 1959 B.L.M. DEPENDENT RESURVEY.

LEGIBLE MARKS ON BEARING OBJECTS

	FOUND	FOUND	SET	SET
	OPEN BLAZE	OPEN BLAZE	X	B _T
KIND	DOUG. FIR STUMP	DOUG. FIR STUMP	WHITE OAK	DOUG. FIR
SIZE	7" DIA.	24" DIA.	4" DIA.	11" DIA.
BEARING	S. 22° E.	N. 89° 30' W.	N. 36° 12' E.	N. 84° 36' E.
DISTANCE	147.1'	(180.2')	25.2'	86.9'
BT TAG POSTED	YES	YES	YES	YES

OVER



BRASS CAP DETAIL

REGISTERED PROFESSIONAL LAND SURVEYOR
 John Rinaldi, Jr.
 OREGON
 JULY 15, 1983
 JOHN RINALDI, JR.
 2056