

## CORNER FILE TRACKING

H:\Survey\Corners\Misc\Filetrac.doc

11/23/98

<b>CORNER NUMBER</b>
----------------------

148837040
-----------

STEP	HISTORY()	RESTORATION()
Form Prepared, DB	6/30/03	6/30/03
Field Inspection, DB	7/14/03	7/14/03
Form Checked, DB	7/16/03	7/16/03
Form Edited, DB	7/17/03	7/17/03
Form Signed, DB	7/17/03	7/17/03
Authorize Payment, DB	—	—
Archive Digital Files	7/18/03	7/18/03
Collect Documents	7/18/03	7/18/03
Scanned	7/18/03	7/18/03
Copy For Filming	7/18/03	7/18/03
Filed, DB		
Finish index (count unit)	7/14/03	7/14/03
Filmed (Archived), DB		

(DB) = Entry needed in database (Access).

### COMMENTS:

DATE 6/30/2003TOWNSHIP 14 SOUTH, RANGE 8 WEST, WILLAMETTE MERIDIAN; SECTION 09 CORNER N/A  
DONATION LAND CLAIM B.N. LONGWORTH NO. 37 CORNER SW INTERIOR**COMMON CORNER(S):**

NONE

**RECORDS (INFORMATION IN BOLD ITALICS IS COUNTY STAFFS' INTERPRETATION OF THE RECORD)**

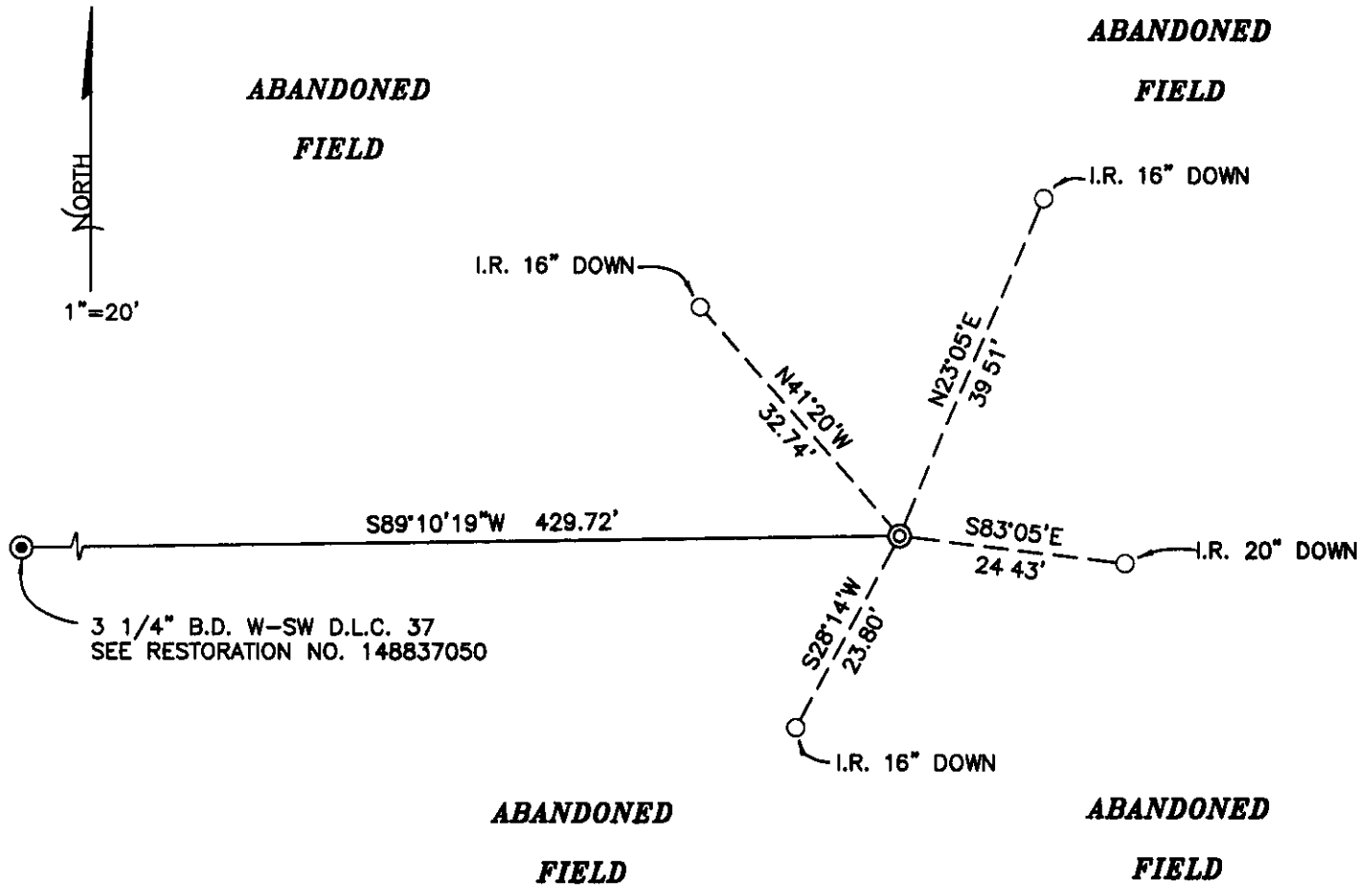
BASED ON EXTENSIVE RESEARCH AND RECOVERY OF EVIDENCE, THIS OFFICE HAS DETERMINED THAT MOST GENERAL LAND OFFICE SURVEYORS MEASURED TO THE FACE OF BEARING TREES.

- [01] GENERAL LAND OFFICE (GLO) OF THE B N. LONGWORTH DONATION LAND CLAIM (DLC) NO.37. NOTES BY DENNIS HATHORN, D S , DATED SEPTEMBER 15, 1856 ***SET POST FOR INTERIOR CORNER, FROM WHICH A MAPLE, 10" DIAM., BEARS S45°W, 200LKS (132FT). AN OAK, 20" DIA., BEARS S25°E, 215LKS (141.9FT).***
- [02] COUNTY SURVEY NO 153 (OLD NO 55) FIELD NOTES (FIELD BOOK 4, PAGE 55) BY F M WILKES, C S , DATED NOVEMBER 15, 1909 ***SET 3/4" X 24" PIPE FOR CORNER, FROM WHICH AN APPLE TREE, 5"DIAM., BEARS S5°E, 1.365CHAINS (90.0FT). AN APPLE TREE, 6" DIAM., BEARS S6°W, 1.130CHAINS (74.6FT).***
- [03] BENTON COUNTY CORNER RESTORATION, BOOK NO 1, PAGE 56 BY BENTON COUNTY, NO DATE GIVEN ***SET 3/4" X 24" PIPE FOR CORNER, TREES DOWN, ONE GONE, IMPRINT OF OLD STAKE FOUND. MARKED, APPLE 5" DIA., S5°E., 1.365CHAINS (90.0FT). APPLE 6" DIA., S6°W., 1.130CHAINS (74.6FT).***
- [04] CORNER RESTORATION NO 2800 ***TRANSCRIBED FROM RECORD [02] AND MAY CONTAIN ERRORS AND/OR OMISSIONS.***
- [05] BENTON COUNTY MAP NO 14-8-00003 BY W C GALLOWAY, C S , DATED APRIL 30, 1918 ***SET 3/4" PIPE, FROM WHICH AN APPLE 5" DIA., S5°E., 1.365CHAINS (90.0FT). APPLE 6" DIA., S6°W., 1.130CHAINS (74.6FT).***

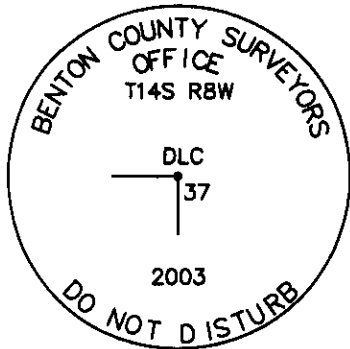
**NOTES:**

THIS IS A MICROSOFT WORD 2000 DOCUMENT NAMED "48837050" CREATED FROM A BOILER PLATE DOCUMENT NAMED "HISTORY", WHICH HAS A STYLESHEET NAMED "CORNER" ATTACHED TO IT.

**FIRM/AGENCY:** BENTON COUNTY SURVEYOR'S OFFICE  
**ADDRESS:** 360 S W AVERY AVE CORVALLIS OR 97333, PH. 766-6821  
**RESEARCH BY:** DAVID M DEAN, P L S  
**DATA ENTRY BY:** SCOTT BOND, INTERN



**MONUMENT DETAIL**



**3 1/4" BRASS DISK**

**LEGEND**

- SET 5/8" X 30" REBAR WITH YELLOW PLASTIC CAP MKD "BENTON COUNTY SURVEYOR"
- FOUND MONUMENT AS NOTED
- (F) MEASUREMENT TO FACE
- (C) MEASUREMENT TO CENTER
- ⊙ GOVERNMENT MONUMENT SET AS SHOWN
- ⊙ GOVERNMENT MONUMENT FOUND AS SHOWN
- ⊙ BEARING TREE AS NOTED
- C.S.B T COUNTY SURVEYORS BEARING TREE
- GLO GENERAL LAND OFFICE

**NEW ACCESSORIES**

- 1 SET REBAR (SEE LEGEND) 16" DEEP IN FIELD, N23°05'E, 39.51 FEET
- 2 SET REBAR (SEE LEGEND) 20" DEEP IN FIELD, S83°05'E, 24.43 FEET.
- 3 SET REBAR (SEE LEGEND) 16" DEEP IN FIELD, S28°14'W, 23.80 FEET.
- 4 SET REBAR (SEE LEGEND) 16" DEEP IN FIELD, N41°20'W, 32.74 FEET.

**NOTES**

COMPASS DECLINATION IS 20° EAST. ALL MEASURED DISTANCES AND BEARINGS ARE TO THE CENTER OF THE OBJECT, UNLESS OTHERWISE NOTED. ALL BEARING TREES ARE PAINTED AND HAVE A B.T. TAG ATTACHED, FACING THE CORNER UNLESS OTHERWISE NOTED. ALL NEW BEARING TREES HAVE A PLASTIC WASHER (STAMPED "BENTON COUNTY SURVEYOR CORNER RESTORATION") ATTACHED (BY ALUMINUM NAIL) TO THE FACE, BELOW THE "BT" FOR DISTANCE AND ANGLE MEASUREMENT UNLESS OTHERWISE NOTED. THE DRAWING IS FROM AUTOCAD RELEASE 2002.

THIS RESTORATION WAS PERFORMED AT THE DIRECTION AND APPROVAL OF THE BENTON COUNTY SURVEYOR, rw

FIRM/AGENCY BENTON COUNTY SURVEYOR'S OFFICE  
 ADDRESS 360 S W AVERY AVE. CORVALLIS OR 97333; PH 766-6821  
 PRESENT DAVID M. DEAN, P.L.S. AND SCOTT BOND, SURVEY TECH.

REGISTERED  
 PROFESSIONAL  
 LAND SURVEYOR

*David M. Dean* 7-17-03

OREGON  
 JULY 13, 1984  
 DAVID M. DEAN  
 2090

RENEWAL DATE: 12/31/03

**BENTON COUNTY CORNER RESTORATION FORM, PAGE 1 OF 1, 148837040R2**

**SEE CORNER HISTORY FORM FOR RECORDS ETC.**

CORNER RESTORATION FIELD BOOK NUMBER 21 PAGE(S) 38 DATE 07/14/2003  
TOWNSHIP 14 SOUTH, RANGE 8 WEST, WILLAMETTE MERIDIAN; SECTION 9 CORNER NONE  
DONATION LAND CLAIM B. N. LONGSWORTH NO. 37 CORNER INTERIOR SW  
CONDITION REPORT     ; REFERENCED OUT     ; RENEWED XX; SURVEYED IN     

**LOCATION AND COMMENTS:**

CORNER IS LOCATED IN AN UNCULTIVATED FIELD AND ±300 FEET SOUTHERLY OF HIGHWAY 34. TO REACH CORNER FROM THE JUNCTION OF HAYDEN ROAD AND HIGHWAY 34, TRAVEL WESTERLY ON HIGHWAY 34 FOR 1.90 MILES AND PARK; THEN SOUTH FOR ± 300 FEET TO CORNER CORNER IS GOOD FOR PREMARKING AND GPS CONTROL

**MONUMENTS AND ACCESSORIES FOUND (CONDITION AND SOURCE):**

- 1 FOUND 3/4" X 15", BADLY RUSTED IRON PIPE WITH A BROKEN TOP, 14" BELOW GROUND LEVEL FOR CORNER POSITION.  
(SET 3/4" X 24" PIPE FOR CORNER PER RECORDS [02], [03] AND [05])
- 2 FOUND 3 1/4" BRASS DISK AT THE WEST-SOUTHWEST CORNER OF THE B. N LONGSWORTH DLC NO 37, S89°10'19"W,  
429 72 FEET  
(WEST, 429 00 FEET PER RECORD [01])  
(S89°16'W, 429 00 FEET PER RECORD [05])

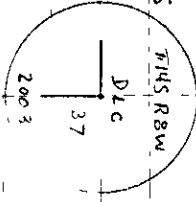
**MONUMENT SET (PROCEDURES AND DESCRIPTION):**

HELD THE 3/4" RUSTY IRON PIPE FOR THE TRUE POSITION OF CORNER REMOVED IRON PIPE AND SET A 2" X 36" GALVANIZED IRON PIPE WITH A 3 1/4" BRASS DISK CONCREATED IN THE TOP, 14" BELOW GROUND LEVEL, MARKED AS SHOWN ON PAGE 2 OF 2 NO EVIDENCE FOUND OF THE TOP 9" OF PIPE NO EVIDENCE REMAINS OF GLO OR COUNTY SURVEYOR BEARING TREES. SET 6 FOOT ORANGE CARSONITE "SURVEY MARKER" POST 0.5 FEET SOUTH OF NEW MONUMENT. REFERENCED CORNER AS SHOWN ON PAGE 2 OF 2

148837040

TRIP FR. #14 (H 26) TO ± SW INT D/C 37 148  
RENUMERATING SAME

FD 3/4 X 15 RUSTY IRON PIPE W/ BROKEN  
TOP 14 BELOW GROUND LEVEL FOR COR  
POSITION. PIPE SET PER RECORD [022].  
NO CUEENCE AT TOP 9 OF PIPE NO EVIDENCE  
OF GLO OR CS ACCESSORIES REMAIN. HEAD  
3/4 PIPE FOR TRUE COR REMOVED & SET  
2 X 36 6 I.P. W/ 3/4 BRASS DISK CONC IN  
TOP 14 & MKD AS SHOWN.  
SET 6' SNAPE/MARKER POST O/S  
REPLACED 3/4 X 15 I.P. 3/4 BRASS DISK  
INSIDE 2" GIP



26) FD 3/4 X 15 I.P. W/  
BROKEN TOP 14" ↓  
SW INT D/C 37 148

13 14-25  
25) SET SPIKE 2" ↓ IN  
FIELD ± 75' S HWY 34

CLEAR, WARM  
8:05 3005' N9  
LECA TERNOS/TOS

FILE 48837040 CRS

7/14/03  
D DEAN  
S BOND

21/38

