

## CORNER FILE TRACKING

H:\Survey\Corners\Misc\Filetrac.doc

11/23/98

<b>CORNER NUMBER</b>
----------------------

148838020
-----------

<b>STEP</b>	<b>HISTORY()</b>	<b>RESTORATION()</b>
<b>Form Prepared, DB</b>	6/3/03	6/27/03
<b>Field Inspection, DB</b>	6/4/03	6/4/03
<b>Form Checked, DB</b>	7/7/03	7/7/03
<b>Form Edited, DB</b>	7/10/03	7/10/03
<b>Form Signed, DB</b>	7/17/03	7/17/03
<b>Authorize Payment, DB</b>	_____	_____
<b>Archive Digital Files</b>	7/18/03	7/18/03
<b>Collect Documents</b>	7/18/03	7/18/03
<b>Scanned</b>	7/18/03	7/18/03
<b>Copy For Filming</b>	7/18/03	7/18/03
<b>Filed, DB</b>		
<b>Finish index (count unit)</b>	6/4/03	6/4/03
<b>Filmed (Archived), DB</b>		

(DB) = Entry needed in database (Access).

### COMMENTS:

DATE 06/03/2003TOWNSHIP 14 SOUTH, RANGE 8 WEST, WILLAMETTE MERIDIAN; SECTION 10 CORNER NONE  
DONATION LAND CLAIM E. T. ELLIS NO. 38 CORNER E-SE**COMMON CORNER(S):**

WEST INTERIOR OF A E ELLIS DLC NO 39

**RECORDS (INFORMATION IN *BOLD ITALICS* IS COUNTY STAFFS' INTERPRETATION OF THE RECORD)****BASED ON EXTENSIVE RESEARCH AND RECOVERY OF EVIDENCE, THIS OFFICE HAS DETERMINED THAT MOST GENERAL LAND OFFICE SURVEYORS MEASURED TO THE FACE OF BEARING TREES.**

- [01] GENERAL LAND OFFICE (GLO) NOTES OF THE E.T ELLIS DONATION LAND CLAIM (DLC) NO. 38 BY DENNIS HATHORN, D.S., DATED JULY 4, 1856 *SET POST FOR SE CORNER, FROM WHICH AN OAK, 12 INS. DIAM., BEARS N2 3/4°E, 135 LKS (89.10 FEET) AN OAK 18 INS DIAM., BEARS N79°W, 138 LKS (91.08 FEET).*
- [02] GLO NOTES OF THE A E ELLIS DLC NO 39 BY DENNIS HATHORN, D S , DATED JULY 5, 1856 *INTERIOR CORNER WHICH IS E. T. ELLIS' SE CORNER.*
- [03] COUNTY SURVEY NO 1164 (OLD NO. 248) FIELD NOTES (FIELD BOOK 38, PAGE 41) BY W C GALLOWAY, C.S , DATED AUGUST 24, 1931 *OAK 12" N2 1/4°E, 89.10 FEET, OAK 18" N79°W, 91.08 FEET.*

**NOTES:**

THIS IS A MICROSOFT WORD 2000 DOCUMENT NAMED "48838020" CREATED FROM A BOILER PLATE DOCUMENT NAMED "HISTORY", WHICH HAS A STYLESHEET NAMED "CORNER" ATTACHED TO IT

**FIRM/AGENCY:** BENTON COUNTY SURVEYOR'S OFFICE  
**ADDRESS:** 360 S W AVERY AVE CORVALLIS OR 97333, PH. 766-6821  
**RESEARCH BY:** DAVID M DEAN, P L S  
**DATA ENTRY BY:** DEAN

**BENTON COUNTY CORNER RESTORATION FORM, PAGE 1 OF 2, 148838020R1**

**SEE CORNER HISTORY FORM FOR RECORDS ETC.**

CORNER RESTORATION FIELD BOOK NUMBER 21 PAGE(S) 25 DATE 06/04/2003  
TOWNSHIP 14 SOUTH, RANGE 8 WEST, WILLAMETTE MERIDIAN; SECTION 10 CORNER NONE  
DONATION LAND CLAIM E. T. ELLIS NO.38 CORNER E-SE  
CONDITION REPORT       ; REFERENCED OUT       ; RENEWED XX; SURVEYED IN       

**LOCATION AND COMMENTS:**

CORNER IS LOCATED IN A FLAT AREA OF BRUSH, GRASS AND SCATTERED SMALL CONIFERS, APPROXIMATELY 50 FEET SOUTHEAST OF HAYDEN ROAD TO REACH CORNER FROM THE JUNCTION OF HIGHWAY 34 AND HAYDEN ROAD, TRAVEL SOUTHERLY ON HAYDEN ROAD FOR 1.62 MILES, THEN SOUTH ±50 FEET TO CORNER. CORNER IS POOR FOR GPS CONTROL AND PREMARKING.

**MONUMENTS AND ACCESSORIES FOUND (CONDITION AND SOURCE):**

- 1 FOUND 26" W OAK WIND THROW GLO BEARING TREE, N2°45'E, 89.10 FEET TO ROOT HOLE OPENED OAK AND FOUND VISIBLE BACKCAST SCRIBING "BT".  
(12" OAK N2 3/4°E, 89.10 FEET PER RECORE [01])
- 2 FOUND 3 1/4" BRASS DISK AT NORTH NORTHWEST CORNER A. E. ELIS DLC NO. 39, N00°11'00"W, 1273.61 FEET. SEE RESTORATION NO 148839606.  
(NORTH, 1268.52 FEET PER RECORDS [01] AND [02])
- 3 FOUND 3 1/4" BRASS DISK AT THE WEST NORTHWEST CORNER OF THE A. E. ELLIS DLC NO 39, N89°58'42"W, 570.74 FEET. SEE RESTORATION NO 148839040  
(WEST 567.60 FEET PER RECORDS [01] AND [02]).
- 4 FOUND 3 1/4" BRASS DISK AT THE SOUTH INTERIOR OF THE E. T. ELLIS DLC NO. 38, N89°58'42"W, 1036.63 FEET. SEE RESTORATION NO 148838030  
(WEST, 1030.92 FEET PER RECORDS [01] AND [02])

**MONUMENT SET (PROCEDURES AND DESCRIPTION):**

FOUND ORIGINAL GLO BEARING TREE, NOW A 26" W OAK WIND THROW WITH AN OBVIOUS ROOT HOLE. OPENED OAK TO VISIBLE BACKCAST SCRIBING "BT" HELD A POINT IN ROOT HOLE WHICH WE CONSIDER TO BE VERY CLOSE TO THE POSITION OF THE ORIGINAL FACE AND CALCULATED CORNER POSITION PER RECORD GLO BEARING AND DISTANCE NORTHWEST GLO BEARING TREE IS NOW GONE

AT CALCULATED POSITION, SET A 2" X 36" GALVANIZED IRON PIPE WITH A 3 1/4" BRASS DISK CONCREATED IN THE TOP, 4" ABOVE GROUND LEVEL, MARKED AS SHOWN ON PAGE 2 OF 2 SET 6 FOOT ORANGE CARSONITE "SURVEY MARKER" POST 1 FOOT SOUTH OF MONUMENT

3 1/4" BRASS DISK AT  
N NW COR. E. T. ELLIS  
DLC 38 SEE RESTORATION  
NO. 148839060

ROOT HOLE 26" OAK G.L.O. B.T.  
WIND THROW LAYING NORTH OF  
ROOT HOLE - OPENED TO VISIBLE  
SCRIBING.



1"=20'

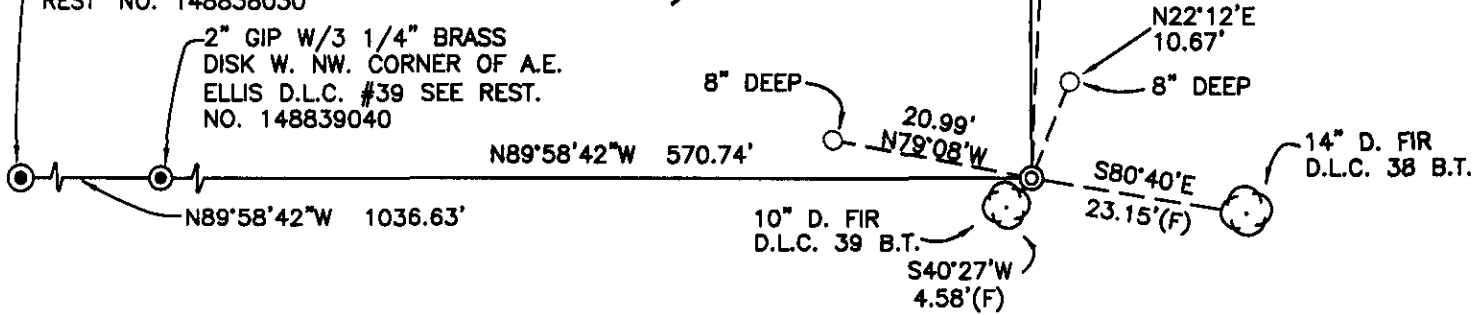
BEARING FROM SOLAR

HARDWOODS AND CONIFERS

APPROX TRAVELED EDGE  
HAYDEN ROAD (C.R 48401)  
APPROX TRAVELED EDGE

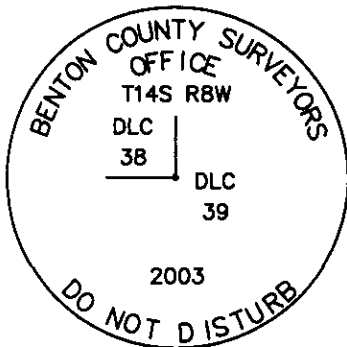
2" GIP W/3 1/4" BRASS DISK S. INT.  
CORNER OF E.T. ELLIS D.L.C. #38 SEE  
REST NO. 148838030

2" GIP W/3 1/4" BRASS  
DISK W. NW. CORNER OF A.E.  
ELLIS D.L.C. #39 SEE REST.  
NO. 148839040



**SECOND GROWTH**

MONUMENT DETAIL



3 1/4" BRASS DISK

**D. FIR**

LEGEND

- SET 5/8" X 30" REBAR WITH YELLOW PLASTIC CAP MKD "BENTON COUNTY SURVEYOR"
- FOUND MONUMENT AS NOTED
- (F) MEASUREMENT TO FACE
- (C) MEASUREMENT TO CENTER
- ⊙ GOVERNMENT MONUMENT SET AS SHOWN
- ⊙ GOVERNMENT MONUMENT FOUND AS SHOWN
- ⊙ BEARING TREE AS NOTED
- C.S.B.T. COUNTY SURVEYORS BEARING TREE
- GLO GENERAL LAND OFFICE

**NEW ACCESSORIES**

- 1 SET REBAR (SEE LEGEND) 8" BELOW GROUND LEVEL, N22°12'E, 10.67 FEET
- 2 SET REBAR (SEE LEGEND) 8" BELOW GROUND LEVEL, N79°09'W, 20.99 FEET
- 3 FACED AND SCRIBED 14" D. FIR MKD "D.L.C. 38 B.T.", S80°40'E, 23.15 FEET TO FACE (23.7 FEET TO CENTER) SET ALUMINUM NAIL AND PLASTIC WASHER IN BLAZE BELOW SCRIBING FOR DISTANCE AND ANGLE MEASUREMENT.
- 4 FACED AND SCRIBED 10" D. FIR MKD "D.L.C. 39 B.T.", S40°27'W, 4.58 FEET TO FACE (5.0 FEET TO CENTER). SET ALUMINUM NAIL AND PLASTIC WASHER IN BLAZE BELOW SCRIBING FOR DISTANCE AND ANGLE MEASUREMENT.

**NOTES**

COMPASS DECLINATION IS 20° EAST. ALL MEASURED DISTANCES AND BEARINGS ARE TO THE CENTER OF THE OBJECT, UNLESS OTHERWISE NOTED. ALL BEARING TREES ARE PAINTED AND HAVE A B.T. TAG ATTACHED, FACING THE CORNER UNLESS OTHERWISE NOTED. ALL NEW BEARING TREES HAVE A PLASTIC WASHER (STAMPED "BENTON COUNTY SURVEYOR CORNER RESTORATION") ATTACHED (BY ALUMINUM NAIL) TO THE FACE, BELOW THE "BT" FOR DISTANCE AND ANGLE MEASUREMENT UNLESS OTHERWISE NOTED. THE DRAWING IS FROM AUTOCAD RELEASE 2002.

THIS RESTORATION WAS PERFORMED AT THE DIRECTION AND APPROVAL OF THE BENTON COUNTY SURVEYOR, DM

FIRM/AGENCY BENTON COUNTY SURVEYOR'S OFFICE  
ADDRESS 360 S.W. AVERY AVE. CORVALLIS OR 97333; PH. 766-6821  
PRESENT DAVID M DEAN, P.L.S., AND BERNIE ALTENBACK, SURVEY TECH.

REGISTERED  
PROFESSIONAL  
LAND SURVEYOR

David M Dean 7-17-03

OREGON  
JULY 13, 1984  
DAVID M. DEAN  
2090

RENEWAL DATE: 12/31/03

148838020

REMANUMENTATION ESE ET ELLIS

DLC # 38 T145 RBW

Fd 26 Down w OAK GLO BT  
W/HEELED FACE OPENED W/SAW  
TO VISIBLE BACKCAST SCRIBING.

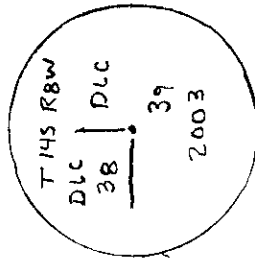
CALL TRUE COR FROM BEST  
ESTIMATED FACE OF SAID GLO BT

OTHER GLO BT IS GONE GLO MON  
NOT Fd

SET 2 X36" G.I.P W/3/4 BRASS DISK  
CONC IN TOP 4" ABOVE GRADING LEVEL  
MKD AS SHOWN.

SET 6' ORANGE CARSONITE SURVEY  
MARKER POST 1 SOUTH OF NEW MON

FOR SET Hw/ 34# HYTES C/S SW 162 W.



51-25-55

3/4 BRASS DISK

CLEAR, HOT

85°F 300 Hg

LECA TCR 1105/TDS

6/4/03

D DEAN

B ALTENBACK

21/25

