

CORNER FILE TRACKING

H:\Survey\Corners\Misc\Filetrac.doc

11/23/98

CORNER NUMBER

148838040

STEP	HISTORY()	RESTORATION()
Form Prepared, DB	5/24/03	6/26/03
Field Inspection, DB	5/24/03	5/24/03
Form Checked, DB	6/10/03	6/10/03
Form Edited, DB	6/11/03	6/11/03
Form Signed, DB	7/17/03	7/17/03
Authorize Payment, DB	~	~
Archive Digital Files	7/18/03	7/18/03
Collect Documents	7/18/03	7/18/03
Scanned	7/18/03	7/18/03
Copy For Filming	7/18/03	7/18/03
Filed, DB		
Finish index (count unit)	5/24/03	5/24/03
Filmed (Archived), DB		

(DB) = Entry needed in database (Access).

COMMENTS:

DATE 15/24/2003TOWNSHIP 14 SOUTH, RANGE 8 WEST, WILLAMETTE MERIDIAN; SECTION 10 CORNER NONE
DONATION LAND CLAIM E. T. ELLIS NO. 38 CORNER SOUTH SOUTHEASTCOMMON CORNER(S):

NONE

RECORDS (INFORMATION IN BOLD ITALICS IS COUNTY STAFFS' INTERPRETATION OF THE RECORD)

BASED ON EXTENSIVE RESEARCH AND RECOVERY OF EVIDENCE, THIS OFFICE HAS DETERMINED THAT MOST GENERAL LAND OFFICE SURVEYORS MEASURED TO THE FACE OF BEARING TREES.

- [01] GENERAL LAND OFFICE (GLO) NOTES OF THE E T ELLIS DONATION LAND CLAIM (DLC) NO 38 BY DENNIS HATHORN, D.S., DATED JULY 4, 1856 **SET POST ON RIGHT BANK OF ALSEA RIVER FOR CORNER FROM WHICH A CHERRY 12 IN DIA BEARS N17°W, 62 LKS (40.92 FEET). A CRABAPPLE 12 INS DIA BEARS S65°W, 43 LKS (28.38 FEET).**
- [02] COUNTY SURVEY NO 153 (OLD NO 55) FIELD NOTES (BOOK 4, PAGE 58) BY F M WILKES, C S., DATED NOVEMBER 15, 1909. **SET FIR STAKE AND MADE 2 BEARING TREES; A 17" FIR N20°E, .067 CHS (4.42 FEET) AND A 12" FIR S31°W. .04 CHS (2.64 FEET).**
NOTE: BASED ON A BREAK DOWN OF WIKLES' FIELD NOTES, THIS CORNER WAS SET 7.00 CHS (462.00 FEET) SOUTH OF THE CORNER HE RECOVERED AT THE SOUTH INTERIOR CORNER OF THE E. T. ELLIS DLC NO. 38.
- [03] COUNTY SURVEY NO 2450 FIELD NOTES (LOOSE LEAF) BY MARTIN BEYERLEIN, D.C.S., DATED JANUARY 22, 1953 **SET 2" IRON PIPE 430.85 FEET SOUTHERLY OF SOUTH INTERIOR CORNER, DLC 38 FOR WITNESS CORNER TO SUBJECT CORNER. TRUE CORNER WAS CALCULATED AT 7.079 CHS (467.21 FEET) SOUTHERLY, WHICH WAS AN INCORRECT INTERPRETATION OF WILKES' FIELD NOTES.**
- [04] COUNTY SURVEY NO 2450 BY CURTIS C HANSON, C S , DATED JANUARY 22, 1952 **SIMILAR INFORMATION AS RECORD [03].**

NOTES:

THIS IS A MICROSOFT WORD 2000 DOCUMENT NAMED "48838040" CREATED FROM A BOILER PLATE DOCUMENT NAMED "HISTORY", WHICH HAS A STYLESHEET NAMED "CORNER" ATTACHED TO IT

FIRM/AGENCY: BENTON COUNTY SURVEYOR'S OFFICE
ADDRESS: 360 S W AVERY AVE CORVALLIS OR 97333; PH. 766-6821
RESEARCH BY: DAVID M DEAN, P L S
DATA ENTRY BY: DEAN

BENTON COUNTY CORNER RESTORATION FORM, PAGE 1 OF 2, 148838040R1

SEE CORNER HISTORY FORM FOR RECORDS ETC.

CORNER RESTORATION FIELD BOOK NUMBER 21 PAGE(S) 23 DATE 05/24/2003
TOWNSHIP 14 SOUTH, RANGE 8 WEST, WILLAMETTE MERIDIAN; SECTION 10 CORNER NONE
DONATION LAND CLAIM E. T. ELLIS NO. 38 CORNER SOUTH SOUTHEAST
CONDITION REPORT ; REFERENCED OUT ; RENEWED ; SURVEYED IN XX

LOCATION AND COMMENTS:

CORNER IS LOCATED NEAR THE RIGHT BANK (NORTH) OF THE ALSEA RIVER IN A FLAT AREA BETWEEN A CHRISTMAS TREE FARM TO THE NORTHWEST AND A FILBERT ORCHARD TO THE NORTHEAST. TO REACH CORNER FROM THE JUNCTION OF HAYDEN ROAD AND HIGHWAY 34; TRAVEL WESTERLY ON HIGHWAY 34 FOR 1.06 MILES; THEN LEFT (SOUTH) ON FARM ACCESS ROAD FOR ±50 FEET AND PARK, THEN SOUTHWESTERLY ACROSS FILBERT ORCHARD FOR ±1/4 MILE TO NORTH/SOUTH WIRE FENCE BETWEEN FILBERT ORCHARD AND CHRISTMAS TREE FARM; THEN SOUTH ALONG FENCE LINE FOR ±1/4 MILE TO CORNER ON HIGH RIVER BANK
CORNER IS POOR FOR PREMARKING AND GPS CONTROL

MONUMENTS AND ACCESSORIES FOUND (CONDITION AND SOURCE):

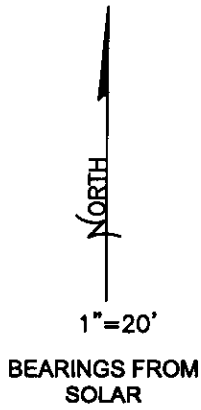
- 1 FOUND 2" IRON PIPE 4" BELOW GROUND LEVEL ON THE SOUTH SIDE OF A 26" W. OAK, N6°13'W, 20 50 FEET
- 2 FOUND 3 1/4" BRASS DISK ON 2" GALVANIZED IRON PIPE AT THE SOUTH INTERIOR CORNER OF THE E. T. ELLIS DLC NO. 38 PER CORNER RESTORATION NO. 148838030; N00°00'00"E, 452.00 FEET
- 3 FOUND 2 1/2" BRASS DISK ON 2" GALVANIZED IRON PIPE AT THE SOUTHWEST CORNER OF THE E T ELLIS DLC NO. 38 PER CORNER RESTORATION NO 148837020, BEARS S00°00'00"E, 10.00 FEET AND S89°56'42"W, 1113.50 FEET
- 4 FOUND 3 1/4" BRASS DISK ON 2" GALVANIZED IRON PIPE AT THE WEST-NORTHWEST CORNER OF THE A E. ELLIS DLC NO. 39 PER CORNER RESTORATION NO 148839040, N45°52'41"E, 649.00 FEET

NOTE: REFERENCES ARE TO WITNESS CORNER.

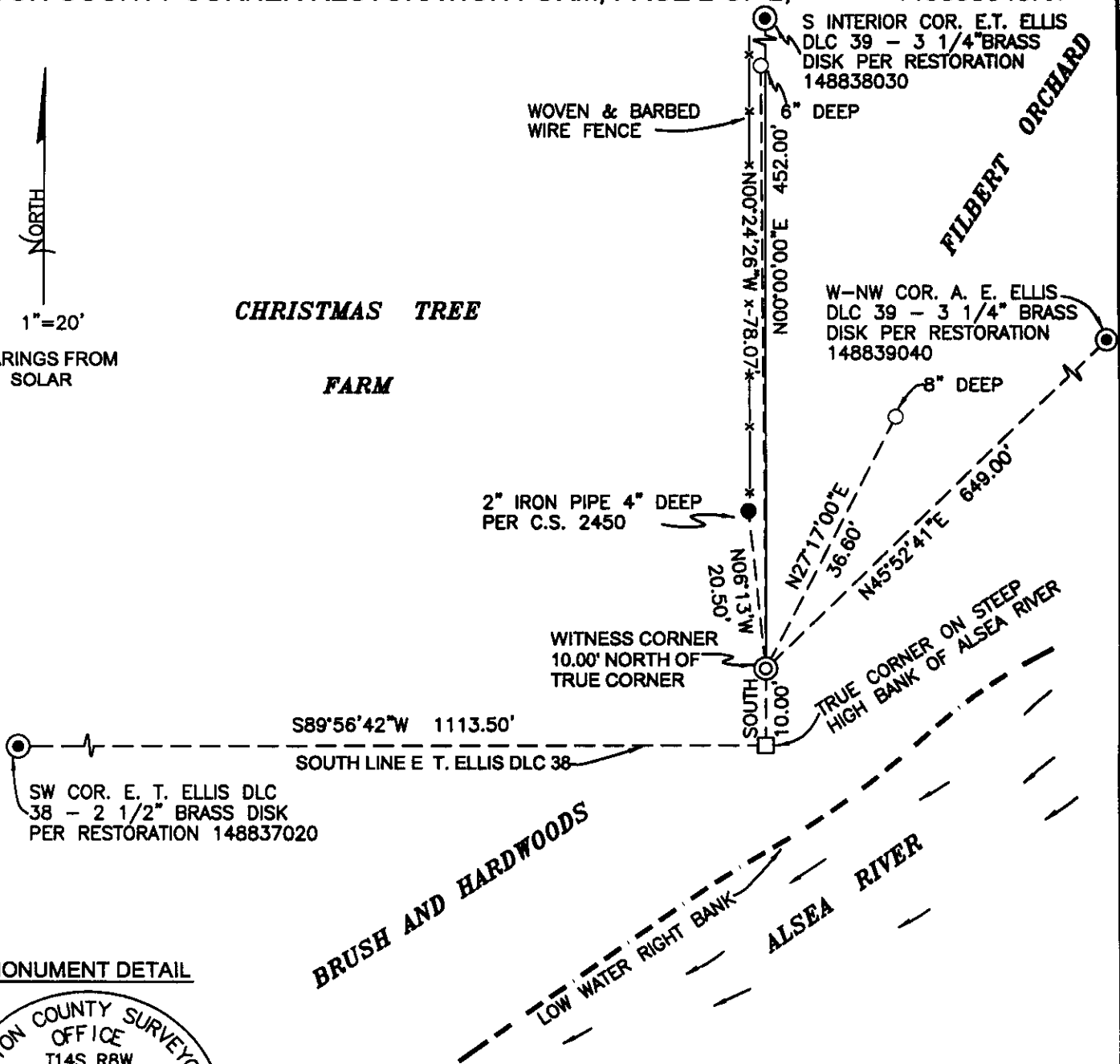
MONUMENT SET (PROCEDURES AND DESCRIPTION):

NO GLO OR COUNTY SURVEYOR'S MONUMENT OR ACESSORIES COULD BE FOUND AFTER A THOROUGH SEARCH OF THE AREA AND CORNER WAS DETERMINED TO BE LOST. CALCULATED POSITION OF CORNER TO BEST PERPETUATE F M WILKES. C.S., POSITION PER COUNTY SURVEY NO 153 CALCULATED POSITION IS S00°00'00"E, 7.00 CHAINS (462 00 FEET) FROM THE SOUTH INTERIOR CORNER OF THE E T ELLIS DLC NO 38 (SEE CORNER RESTORATION NO. 148838030).

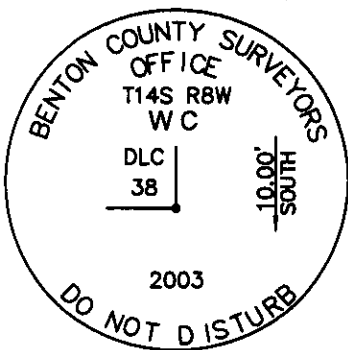
AT SAID CALCULATED POSITION, SET 2" X 36" GALVANIZED IRON PIPE WITH A 3 1/4" BRASS DISK CONCREATED IN THE TOP, FLUSH WITH GROUND LEVEL, MARKED AS SHOWN ON PAGE 2 OF 2. SET 6 FOOT ORANGE CARSONITE "SURVEY MARKER" POST 1 FOOT NORTH OF WITNESS CORNER MONUMENT.



CHRISTMAS TREE FARM



MONUMENT DETAIL



3 1/4" BRASS DISK

LEGEND

- SET 5/8" X 30" REBAR WITH YELLOW PLASTIC CAP MKD "BENTON COUNTY SURVEYOR"
- FOUND MONUMENT AS NOTED
- ⊙ WITNESS CORNER SET AS SHOWN
- ⊙ GOVERNMENT MONUMENT FOUND AS SHOWN
- C.S.B.T. COUNTY SURVEYORS BEARING TREE
- GLO GENERAL LAND OFFICE

NEW ACCESSORIES

- 1 SET REBAR (SEE LEGEND) 8" BELOW GROUND LEVEL, N27°17'E, 36.60 FEET.
 2. SET REBAR (SEE LEGEND) 6" BELOW GROUND LEVEL AND ±2 FEET EAST OF FENCE, N00°24'26"W, 78.07 FEET.
- NOTE REFERENCES ARE TO WITNESS CORNER

NOTES

COMPASS DECLINATION IS 20° EAST. ALL MEASURED DISTANCES AND BEARINGS ARE TO THE CENTER OF THE OBJECT, UNLESS OTHERWISE NOTED. ALL BEARING TREES ARE PAINTED AND HAVE A B.T. TAG ATTACHED, FACING THE CORNER UNLESS OTHERWISE NOTED. ALL NEW BEARING TREES HAVE A PLASTIC WASHER (STAMPED "BENTON COUNTY SURVEYOR CORNER RESTORATION") ATTACHED (BY ALUMINUM NAIL) TO THE FACE, BELOW THE "BT" FOR DISTANCE AND ANGLE MEASUREMENT UNLESS OTHERWISE NOTED. THE DRAWING IS FROM AUTOCAD RELEASE 2002.

THIS RESTORATION WAS PERFORMED AT THE DIRECTION AND APROVAL OF THE BENTON COUNTY SURVEYOR, DM

REGISTERED
PROFESSIONAL
LAND SURVEYOR

David M. Dean 7-17-03

OREGON
JULY 13, 1984
DAVID M. DEAN
2090

FIRM/AGENCY BENTON COUNTY SURVEYOR'S OFFICE
ADDRESS 360 S.W. AVERY AVE. CORVALLIS OR 97333; PH. 766-6821
PRESENT DAVID M. DEAN, P.L.S. AND BERNIE ALTENBACK, SURVEY TECH.

RENEWAL DATE: 12/31/03

148838040

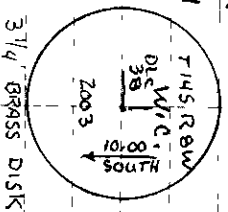
Remounting 5 SET ET ELLIS DIC # 38.

T145 IR B.W

NO EVIDENCE OF OLD MONUMENT OR ACCESSORIES REMAIN. POSITION OF COR WAS CALCULATED AS 700 CH (40200 FEET) SOUTH (EM SELER) OF RECOVERED S INT DIC 38. OTHER PROPORTION METHODS WERE EXAMINED AND REJECTED AS INFERIOR. HELD CALC POSITION & SET 2"x36 GYP W/3/4" BRASS DISK 10 NORTH OF TRUE CORNER FOR WITNESS CORNER. FLUSH W/ GROUND, MKD AS SHOWN SET 6' ORANGE CARBORNE POST 1' N

31-41-43

43) SET WITNESS COR 10 N OF TRUE COR



30-31-41

41) SET IR w/ypc 6'

31-30-40

40) Fd 2 1/2" B DISK 12' L DIC 38

CLEAR, MILD
72° P 29.8 149
LEICA 1105/17DS

5/24/03 2/23
D DEAN
B ALTENBARK

