

5/55

9/26/89; CILW, M.B.D. SILVA COMP. 20°E DEC. CLOY, WARM



T 145 R 9W SEC 28

LINE TREE

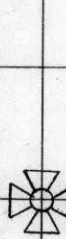
PARTLY ROTTED  
FND: A FIR STUMP 36" IN DIA. @ A HEALED SCAR &  
ONE HALF ON THE N<sup>1</sup>/<sub>4</sub> FACE FOR THE LINE  
TREE (CS 7422)

" A 3 1/4" AL. FOR. SER. MON. STAMPED AS SHOWN  
FIRMLY SET 0.6' A.G. BEARS SOUTH ~ 5.02'  
(SOUTH 5.0' CS 7422) FROM WHICH

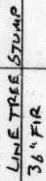
A FIR 9" IN DIA. @ A HEALED FACE BEARS  
(N 88 1/2° W 140' CS 8282)  
N 82° W ~ 1400'. TREE HAS AN "X" CARVED IN THE  
BARK ON THE E<sup>1</sup>/<sub>4</sub> FACE. SET A PK + BLOW IN THE  
N<sup>1</sup>/<sub>4</sub> FACE. FND A B.T. TAB ON THE E<sup>1</sup>/<sub>4</sub> FACE, SET  
A NEW TAB BELOW

A FIR 8" IN DIA @ A HEALED FACE BEARS S 38° E ~  
(S 41° 02' E 27.4' CS 8282)  
27.40'. TREE HAS AN "X" CARVED IN THE BARK ON  
THE NE<sup>1</sup>/<sub>4</sub> FACE. SET PK + BLOW IN THE SW<sup>1</sup>/<sub>4</sub> BASE  
FND BT TAB ON NE<sup>1</sup>/<sub>4</sub> FACE. SET NEW TAB BELOW

FND AN ORANGE FIBERGLASS "SURVEY MARKER" POST 3' S<sup>1</sup>/<sub>4</sub>  
NO OTHER RECORD BEARING OBJECTS WERE RECOVERED  
NOTHING NEW WAS SET OR MKD.



(N 1° 22' 40" W ~ 2464.27')  
CS 7422



LINE TREE STUMP  
36" FIR



9" FIR  
SOUTH 5.02'  
w.c. 3 1/4" AL. MON

(S 22° 44' E ~ 198.29')  
CS 7422

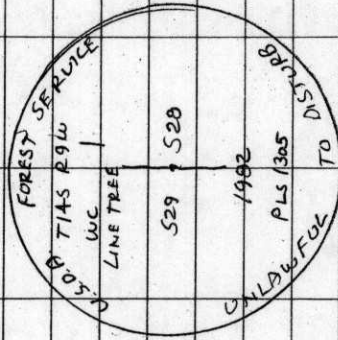


8" FIR



S 29  
S 28

THE COP. IS LOCATED IN A N<sup>1</sup>/<sub>4</sub> SWAMP 20 YR. OLD  
REPROD. IT IS NO GOOD FOR PREMARKING OR GPS  
CONTROL



CAP

STAMPINGS

BENTON COUNTY CORNER RESTORATION FORM

3687

SECTION 28 TOWNSHIP 14 S RANGE 9 W DLC \_\_\_\_\_ CORNER LINE TREE  
DATE 9/26/89 CORNER RESTORATION FIELD BOOK NUMBER 5 PAGE 55

CORNER DESIGNATION:

A LINE TREE FOR SECTIONS 28 AND 29,  
T 14 S R 9 W, WILLAMETTE MERIDIAN.

S29 | S28  
XX  CONDITION REPORT ONLY  
 REFERENCED OUT  
 RENEWED  
 SURVEYED IN

LOCATION AND COMMENTS:

THE CORNER IS LOCATED ON A NORTHERLY SLOPING, 20 YEAR OLD REPLANTED AREA.

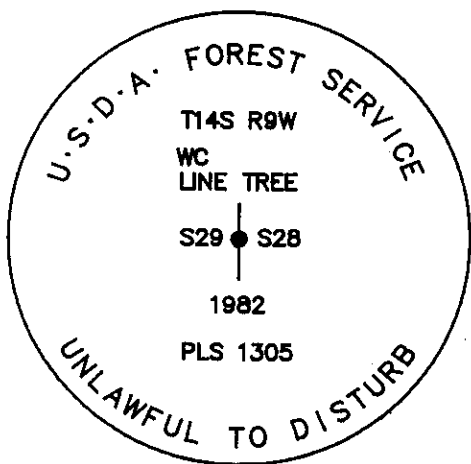
PREVIOUS RENEWALS/SURVEYS, ETC:

ORIGINAL SURVEY BY A. GESNER IN 1892.  
COUNTY SURVEY NO. 7422 BY J. PROCHNAU IN 1982.  
COUNTY SURVEY NO. 8282 BY R. ZANON IN 1989.

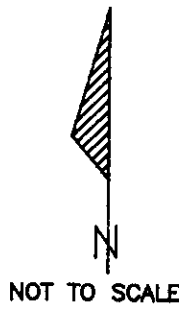
MONUMENTS AND ACCESSORIES FOUND (CONDITION AND SOURCE):

- FOUND: A PARTLY ROTTED FIR STUMP 36" IN DIAMETER FOR THE LINE TREE, WITH TWO HEALED SCARS ON THE NORTHERLY FACE (COUNTY SURVEY NO. 7422).
  - FOUND: A 3 1/4" FOREST SERVICE ALUMINUM MONUMENT, STAMPED AS SHOWN, FIRMLY SET 0.6 FOOT ABOVE SURFACE, BEARS SOUTH 5.02 FEET (SOUTH 5.0 FEET, COUNTY SURVEY NO. 7422) FROM WHICH:
  - FOUND: A FIR 9" IN DIAMETER, WITH A HEALED FACE, BEARS N 82° W 14.00 FEET (N 88 1/4° W 14.0 FEET, COUNTY SURVEY NO. 8282). THE TREE HAS AN "X" CARVED IN THE BARK ON THE EASTERLY FACE. SET A P.K. NAIL AND A B.C.B.W. IN THE NORTHERLY BASE. FOUND A B.T. TAG ON THE EASTERLY FACE. SET A NEW TAG ABOVE FOUND TAG.
  - FOUND: A FIR 8" IN DIAMETER, WITH A HEALED FACE, BEARS S 38° E 27.40 FEET (S 41 1/2° E 27.4 FEET, COUNTY SURVEY NO. 8282). THE TREE HAS AN "X" CARVED IN THE BARK ON THE NORTHWESTERLY FACE. SET A P.K. NAIL AND A B.C.B.W. IN THE SOUTHWESTERLY BASE. FOUND A B.T. TAG ON THE NORTHWESTERLY FACE. SET A NEW TAG BELOW FOUND TAG.
  - FOUND: AN ORANGE FIBERGLASS "SURVEY MARKER" POST 3 FEET SOUTHERLY.
- NO OTHER RECORD BEARING OBJECTS WERE RECOVERED.

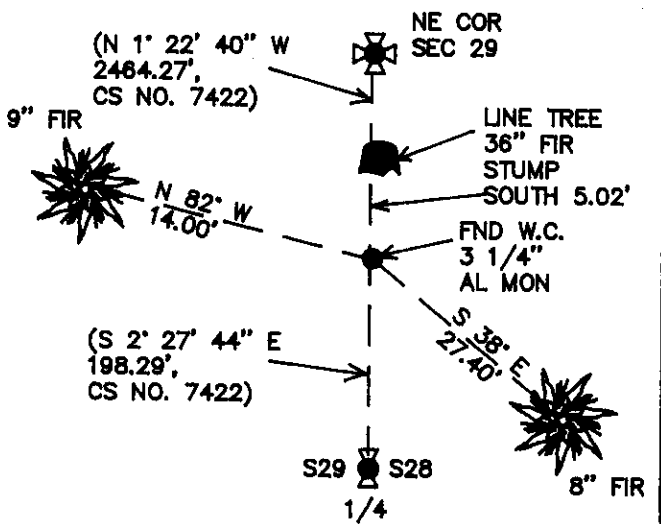
MONUMENT DETAIL



3 1/4" ALUMINUM CAP



SKETCH



MONUMENT SET (PROCEDURES AND DESCRIPTION):

NOTHING WAS SET.

NEW ACCESSORIES :

NO NEW ACCESSORIES WERE ESTABLISHED.

NOTES:

B.C.B.W. IS A BRASS WASHER STAMPED "BENTON COUNTY SURVEYOR". COMPASS DECLINATION IS 20° EAST. ALL MEASURED DISTANCES AND COMPASS BEARINGS ARE TO THE CENTER OF THE OBJECT, UNLESS OTHERWISE NOTED.

REGISTERED  
PROFESSIONAL  
LAND SURVEYOR

*Danna L. Fehrendbacher*

FIRM/AGENCY: BENTON COUNTY PUBLIC WORKS  
ADDRESS: 360 S.W. AVERY AVE. CORVALLIS OR. 97333; PH. 757-8821  
PARTY CHIEF: CURTIS J. LIENFELT  
CREW: MARY BARRON  
WITNESS:

OREGON  
JULY 16, 1982  
DANNA L. FEHRENBACHER  
1995