

CORNER FILE TRACKING

H:\Survey\Corners\Misc\Filetrac.doc

11/23/98

CORNER NUMBER
155100600

STEP	HISTORY(H)	RESTORATION(3)
Form Prepared, DB	7/15/99	7/15/99
Field Inspection, DB	N/A	N/A
Form Checked, DB	10-12-98	7-15-99
Form Edited, DB	10-12-98	10-12-99
Form Signed, DB	—	10-13-99
Authorize Payment, DB	—	—
Archive Digital Files	10-14-99	10-14-99
Collect Documents	10-12-99	10-12-99
Scanned		
Copy For Filming		
Filed, DB		
Finish index (count unit)		
Filmed (Archived), DB		

(DB) = Entry needed in database (Access).

COMMENTS:

NEEDS TO BE REVIEWED

C.S. #223
Continued

1/4 sec. cor. between secs. 7 & 12 T. 10 S. R. 4 & 5 W.
Set 8" I pin N.E. stump
Oak 8" bears N. 67° E. .062 chs.
" 24" " S. 22° 30' W. .96 " std.
Witnesses E.L. Baker, E.R. Wilson & J.C. McClain June 15, 1915.

Continuation of
C.S. #63 from
Page 6 this book.
W.C. Galloway C.S.

Corner to secs. 6, 7, 11 & 12 T. 15 S. R. 5 & 6 W.
Also L in S. line of Geo. Belknap Cts. # 38 &
Set a stone 6" x 10" x 12" trees down & dead. ←
Oak 15" in dia. bears N. 25° 30' E. .202 chs.
" 14" " " " S. 87° 30' E. .590 "
" 14" " " " S. 83° 50' W. .694 "
" 14" " " " N. 51° 30' W. .386 "
Witness E. H. Belknap. April 1910. Trees mkd. July 21, 1915.

C.S. #63

Corner to secs. 5, 6, 7 & 8 T. 15 S. R. 5 W.
Set a stone 6" x 8" x 12", 3" x 3" top. old trees down & dead
Oak 8" in dia. bears S. 16° E. .800 chs. Orig. cor.
Fir 20" " " " S. 22° 50' W. .705 "
Witness E. H. Belknap. April 1910. Trees mkd. July 1915.

"

1/4 cor. between secs. 5 & 6 T. 15 S. R. 5 W.
Set a stone 5" x 6" x 16" Orig. cor.
Oak 14" in dia. bears N. 51° 30' E. 120 chs. std.
" 30" " " " S. 32° W. .55 " "
Witnesses E.H. & Gilbert Belknap April 1910.

"

1/4 cor between secs. 31 & 6 Tps. 14 & 15 S. R. 5 W.
Set a 3/4" pipe
Oak 12" in dia. bears N 2° E. .56 chs. std.
" 20" " " " S. 66° W. .202 "
Witnesses Harland & E.H. Belknap July 21, 1915.

"

Corner to secs. 31, 32, 5 & 6 Tps. 14 & 15 S. R. 5 W.
Set 3/4" pipe galv N.E. oak down.
Oak 36" in dia. bears S. 20° E. .94 chs. std.
" 20" " " " S. 70° W. .72 " " dead
" 15" " " " N. 10° W. .77 " "
July 21, 1915.

C.S. # 242

1/4 sec. cor. between secs. 34 & 35 T. 15 S. R. 5 W.
Set heart oak stake 5" x 5" x 30" 15" in ground.
Oak 36" in dia. bears N. 57° E. 40 chs. down
Ash 6" " " " N. 76° E.
Oak 12" " " " N. 45° W. .45 " std.
Witness Virgil Kay Sept. 20, 1915

15-5 6

Corner to sections 6, 7, 1 and 12, Twp. 15 S., Rs. 5 and 6 W.
Also angle in S. line of George Belknap Cl 38
Reestablishment by W. C. Galloway

2895

April 1910

341

Set a stone 6" x 10" x 12"	trees down and dead
Oak 15" in diam bears N 25° 30' E	.202 chains
Oak 14" in diam bears S 87° 30' E	.590 chains
Oak 14" in diam bears S 83° 50' W	.694 chains
Oak 14" in diam bears N 51° 30' W	.386 chains

Witness E. H. Belknap

Trees marked in July, 1910

LANE COUNTY
DEPARTMENT OF PUBLIC WORKS

RESTORED CORNER

[11]
INDEX NO. 9824

CORNER SECTIONS 6, 7, 1 & 12, T. 15 S., R. 5 & 6 W, W.M.

G.L.O. NOTES DATED: PRIOR TO 3/10/1853 BY: ?

CORNER: SET POST

ACCESSORIES: W. OAK 15" N25 E 37 LKS; W. OAK 10" N50 W 63 LKS;
W. OAK 12" S27 W 28 LKS; W. OAK 8" S15 E 8 LKS.

REESTABLISHMENT NOTES DATED: 1910 OR 1913 BY: W.C. GALLOWAY, C.S.

EVIDENCE RECOVERED: ?

SEE BENTON COUNTY C.S. 538 [15-5 0006 GALLOWAY]

CORNER SET: STONE

ACCESSORIES ESTABLISHED: OAK 15" N25°30' E .202; OAK 14" S87°30' E
.590; OAK 14" S83°50' W .694; OAK 14" N51°30' W .386

REESTABLISHMENT NOTES DATED: _____ BY: _____

EVIDENCE RECOVERED: _____

CORNER SET: _____

ACCESSORIES ESTABLISHED: _____

REESTABLISHMENT NOTES DATED: _____ BY: _____

EVIDENCE RECOVERED: _____

CORNER SET: _____

ACCESSORIES ESTABLISHED: _____

REMONUMENTATION

DATE: 10/17/84 BY: CHARLES W. GUILLE TITLE: SURVEYOR FIRM: G & ASSOCIATES, CO.

EVIDENCE RECOVERED: STONE - 6" x 9" x 8" W/ "SEC COR" CHISELED
ON EAST FLAT SURFACE.

FD. 26" OAK N 30° 15' E 13.5 FT. (LIVE) NO SCRIBE
SHOWING.

FD. OAK (BLOW DOWN) WITH REVERSE SCRIBING ALONG
CORNER SET: SIDE - N 51° 30' W ± CANNOT TELL WHERE TREE STOOD.

→ NOTHING NEW.

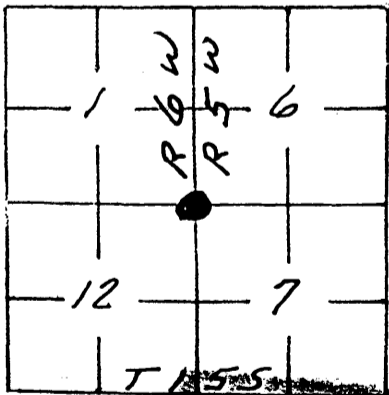
ACCESSORIES ESTABLISHED: MARKED NEW:

- A FIR 19" N 24° 45' W 36.8 FT. MARKED "SITISS
R 6 W BT"

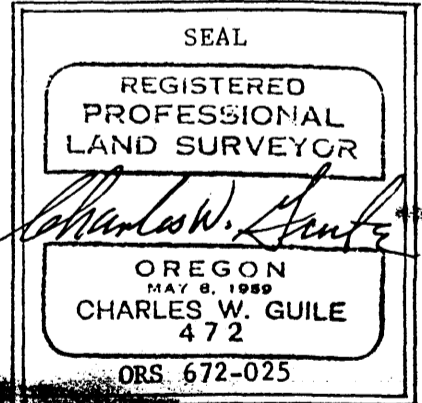
- A FIR 26" N 37° 30' E 26.5 FT. MARKED "56 TISS
R 5 W BT"

OTHER INFORMATION:

- NO TREE'S CLOSE IN THE SOUTH QUADRANTS.
- AN EAST-WEST FENCE IS 1.5 FT. NORTH OF
STONE.



SEE LANE COUNTY
C.S. 26873



SECTION DIAGRAM

SECTION

BENTON COUNTY SURVEYORS OFFICE - CORNER RESTORATION

3327

T 15 S, R 5 W, W. B. & M., BENTON COUNTY, OREGON

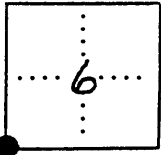
REPORTED BY CHARLES W. GUILÉ

SECTION 6

TITLE LAND SURVEYOR

DATE FEB. 15, 1985

SEE LANE COUNTY C.S. 26873



OFFICIAL CORNER FOUND

CORNER SET R5W R6W

SEC. CORNER COMMON TO SEC. 6 7 12 & 1 IS A 6"x9"x8" STONE W/ "SEC. COR." CHISELED ON EAST FLAT DESCRIBE SURFACE.

ADDITIONAL INFORMATION

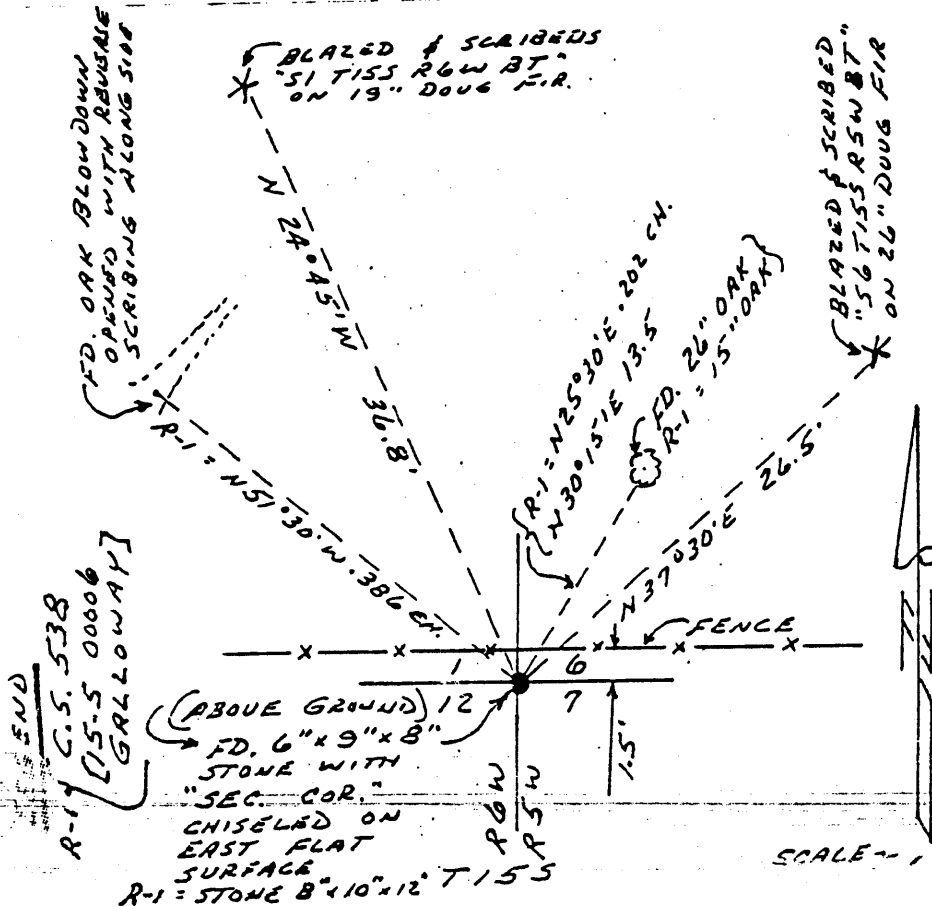
FD. STONE & THE NW & NE BT'S AS SET BY W.C. GALLOWAY, C.S. IN C.S. 538 [15-5 0006 GALLOWAY]

- 1- FD. OAK 26" N 30° 15' E 13.5 FT
LIVE - NO SCRIBE SHOWING.
- 2- FD. OAK BLOW DOWN N 51° 30' W ±
THIS TREE HAD BEEN CUT INTO AND THE REVERSE SCRIBING WAS LAYING ALONG SIDE. I COULD NOT TELL WHERE THIS TREE STOOD.

OVER

LEGIBLE MARKS ON BEARING OBJECTS

	FOUND	FOUND	NEW	NEW
	TREE WAS HEARDED OVER. DID NOT OPEN.	BLOW DOWN HAD BEEN PREVIOUSLY OPENED WITH REVERSE SCRIBING LYING ON GROUND	SCRIBED "51 TISS R6W BT"	SCRIBED "56 TISS R5W BT"
KIND	LIVE OAK	DEAD OAK BLOWDOWN	DOUG. FIR	DOUG. FIR
SIZE	26"	-	19"	26"
BEARING	N 30° 15' E	N 51° 30' W ±	N 24° 45' W	N 37° 30' E
DISTANCE	13.5'	-	36.8'	26.5'
BT TAG POSTED	NO	NO	NO	NO



REGISTERED PROFESSIONAL LAND SURVEYOR

Charles W. Guile

OREGON MAY 8, 1959 CHARLES W. GUILÉ 472

CHARLES W. GUILÉ & ASSOCIATES, CO. Land Surveying 52 Centennial Loop Eugene, OR 97401

DATE 10/12/1998TOWNSHIP 15 SOUTH, RANGE 5 WEST, WILLAMETTE MERIDIAN; SECTION 06 CORNER SW
DONATION LAND CLAIM _____ CORNER _____**COMMON CORNER(S):**

NORTHWEST CORNER SECTION 7, T15S, R5W

SOUTHEAST SECTION 1, T15S, R6W

NORTHEAST CORNER SECTION 12, T15S, R6W

ANGLE POINT ON SOUTH LINE OF GEORGE BELKNAP D.L.C. NO. 38, T15S, R5W

SEE CORNER FILE 155838030 FOR DONATION LAND CLAIM INFORMATION.

CORNER RECORDS (PREVIOUS RENEWALS, SURVEYS, ETC.)

- [01] ORIGINAL GLO SURVEY BY JAMES FREEMAN, D.S., DATED OCTOBER 7, 1852. *SET POST WITH 4 OAK BEARING TREES, MEASURED TO FACE.*
- [02] ORIGINAL GLO SURVEY OF THE GEORGE BELKNAP D.L.C. NO. 38 BY DENNIS HATHORN, D.S., DATED DECEMBER 31, 1853. *NO MONUMENT DESCRIPTION.*
- [03] COUNTY SURVEY NO. 162 FIELD NOTES (BOOK 5, PAGE 13) BY W. C. GALLOWAY, UNKNOWN DATE. *SET 6"x10"x12" STONE WITH 4 OAK BEARING TREES.*
- [04] OLD CORNER RESTORATION BOOK NO. 1, PAGE 97 BY W. C. GALLOWAY, D.C.S. & C.S., DATED APRIL 1910 AND JULY 21, 1915. *ANGLE CORNER ON SOUTH LINE GEORGE BELKNAP AND SECTION CORNER. GLO TREES DOWN AND DEAD, SET STONE WITH 4 OAK BEARING TREES (MARKED IN 1915).*
- [05] CORNER RESTORATION NO. 2895. *TRANSCRIBED COPY OF RECORD [04] AND MAY CONTAIN ERRORS AND OMISSIONS.*
- [06] COUNTY SURVEY NO. 162 MAP BY W. C. GALLOWAY, UNKNOWN DATE. *6"x10"x12" STONE.*
- [07] MAP NO. 15-5&6-00006 BY W. C. GALLOWAY, D.C.S & D.S., DATED APRIL 1910 – NOVEMBER 1913. *SET 6"x10"x12" STONE WITH 4 OAK BEARING TREES.*
- [08] COUNTY SURVEY NO. 525 FIELD NOTES (BOOK 20, PAGE 22) BY W. C. GALLOWAY, C.S., DATED JULY 19, 1915. *SET 6"x10"x12" STONE WITH 4 OAK BEARING TREES.*
- [09] COUNTY SURVEY NO. 538 FIELD NOTES (BOOK 20, PAGE 63) BY W. C. GALLOWAY, C.S., DATED JANUARY 10, 1916. *NO MONUMENT DESCRIPTION.*
- [10] LANE COUNTY SURVEY NO. 26873 BY CHARLES W. GUILLE, P.L.S., DATED OCTOBER 17, 1984. *FOUND STONE AND 2 BEARING TREES, MARKED 2 NEW TREES.*
- [11] LANE COUNTY CORNER RESTORATION NO. 9824 BY CHARLES W. GUILLE, P.L.S., DATED OCTOBER 17, 1984. *FOUND MARKED STONE AND 2 BEARING TREES, MARKED 2 NEW TREES.*
- [12] CORNER RESTORATION NO. 3327 BY CHARLES W. GUILLE, P.L.S., DATED FEBRUARY 15, 1985. *FOUND MARKED STONE WITH 2 OAK, COUNTY SURVEYOR BEARING TREES. MARKED 2 NEW FIR BEARING TREES.*
- [13] COUNTY SURVEY NO. 8892 BY JIM S. PETERSON, P.L.S., DATED JUNE 20, 1994. *FOUND STONE WITH VISIBLE MARKS AND 5 BEARING TREES.*
- [14] BENTON COUNTY GIS/DEA MAPPING PROJECT BY RAY WILSON, C.S. AND TYLER PARSONS, P.L.S., DATED JUNE – JULY 1997. *FOUND STONE AND TIED WITH RTK/GPS.*

HORIZONTAL AND VERTICAL INFORMATION:**HORIZONTAL DATUM:**

LATITUDE:

LONGITUDE:

VERTICAL DATUM:

ELLIPSOID ELEVATION:

ORTHOMETRIC ELEVATION:

GEOID SEPERATION:

STATE PLANE COORDINATE SYSTEM:

N (Y):

E (X):

SCALE FACTOR:

COMBINED FACTOR:

CONVERGENCE:

NOTES:

THIS IS A MICROSOFT WORD 97 DOCUMENT NAMED "55100600" CREATED FROM A BOILER PLATE DOCUMENT NAMED "HISTORY", WHICH HAS A STYLESHEET NAMED "CORNER" ATTACHED TO IT.

INFORMATION IN **BOLD ITALICS** IS COUNTY STAFFS' INTERPRETATION OF THE RECORD.

FIRM/AGENCY: BENTON COUNTY SURVEYOR'S OFFICE**ADDRESS:** 360 S.W. AVERY AVE. CORVALLIS OR 97333; PH. 757-6821**RESEARCH BY:** DAVID M. DEAN, P.L.S.**DATA ENTRY BY:** DAVID M. DEAN

SEE CORNER HISTORY FORM FOR RECORDS ETC.

CORNER RESTORATION FIELD BOOK NUMBER 18 PAGE(S) 7 & 8 DATE 07/15/1999
 TOWNSHIP 15 SOUTH, RANGE 5 WEST, WILLAMETTE MERIDIAN; SECTION 06 CORNER SW
 DONATION LAND CLAIM _____ CORNER _____
 CONDITION REPORT _____; REFERENCED OUT _____; RENEWED XX; SURVEYED IN _____

LOCATION AND COMMENTS:

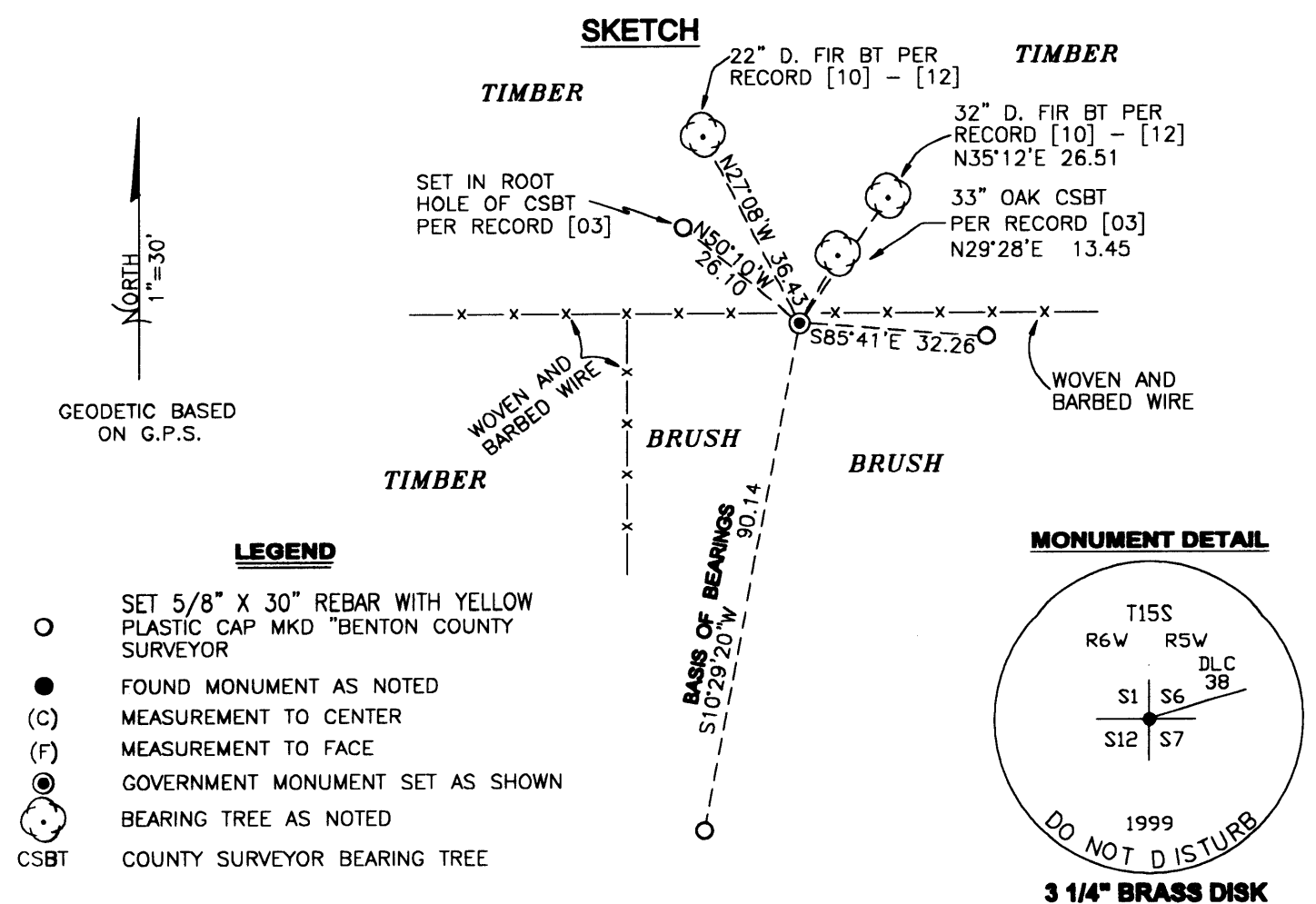
CORNER IS LOCATED IN AN EAST-WEST, WOVEN AND BARBED WIRE FENCE, ON A GENTLE NORTH SLOPE, WITH FIR AND HARDWOODS TO THE NORTH AND MOSTLY BRUSH AND BLACKBERRIES TO THE SOUTH. FROM THE JUNCTION OF BELLFOUNTAIN, NICHOLS AND CHERRY CREEK ROADS, GO EASTERLY ON CHERRY CREEK ROAD FOR 0.95 MILES (25352 CHERRY CREEK ROAD); THEN RIGHT (SOUTHERLY) ON A PRIVATE GRAVEL ROAD FOR 0.53 MILES; THEN NORTHERLY ON A DRIVEWAY FOR 150± FEET; THEN WALK NORTHERLY FOR 150± FEET TO CORNER.

MONUMENTS AND ACCESSORIES FOUND (CONDITION AND SOURCE):

- FOUND: 14" x 10" x 6" STONE, FIRMLY SET, 3" BELOW GROUND SURFACE (BGS) WITH "SEC CORNER" MARKED ON THE NORTHEASTERLY FACE AND A SHALLOW "X" SCRIBED ON THE HIGH POINT. (SET STONE 6"x10"x12" PER RECORD [03]). (SEE RECORDS [04] - [08] AND [10] - [14] FOR SIMILAR INFORMATION)
- FOUND: 33" WHITE OAK COUNTY SURVEYOR BEARING TREE (CSBT) WITH UPPER FACE HAVING BEEN OPENED WITH A SAW WHICH HAS MOSTLY OVERGROWN AGAIN AND A HEALED LOWER BLAZE, BEARING N29°28'E, 13.45 FEET TO CENTER. SET AN ALUMINUM NAIL AND ORANGE PLASTIC WASHER IN THE NORTHWEST BASE. (15" OAK, N25°30'E, 13.33 FEET PER RECORD [03], [04], [07], [08] & [13]). (26" OAK, N30°15'E, 13.5 FEET PER RECORD [10] - [12]).
- FOUND: PROBABLE REMAINS OF THE GENERAL LAND OFFICE (GLO) NORTHEAST BEARING TREE, NOW ROTTED REMAINS OF AN OAK WITH NO VISIBLE MARKS, LYING CLOSE TO THE GLO (N25°E, 37 LINKS) POSITION.
- FOUND: 32" D. FIR WITH HEALED FACE BEARING N35°12'E, 26.51 FEET TO CENTER. SET ALUMINUM NAIL AND ORANGE PLASTIC WASHER IN SOUTHEAST BASE. (26" D. FIR N37°30'E, 26.5 FEET PER RECORD [10] - [12]).
- FOUND: SAWED AND ROTTED REMAINS OF CSBT PER RECORD [03] WITH VISIBLE REVERSE SCRIBING "63 BT" ON A 2 FOOT LONG SAWED CHUNK LYING CLOSE TO RECORD (24" OAK, N51°30'W, .386 CHAINS) POSITION. SET REBAR (SEE NOTES) IN STUMP HOLE AS NOTED IN NEW ACCESSORIES BELOW.
- FOUND: 22" D. FIR WITH HEALED FACE BEARING N27°08'W, 36.43 FEET TO CENTER. SET ALUMINUM NAIL AND ORANGE PLASTIC WASHER IN SOUTHWEST BASE. (19" FIR N24°45'W, 36.8 FEET PER RECORDS [10] - [12]).

MONUMENT SET (PROCEDURES AND DESCRIPTION):

REMOVED SAID FOUND STONE AND SET A 2" INSIDE DIAMETER X 36" GALVANIZED IRON PIPE WITH A 3 1/4" BRASS DISK CONCRETED IN THE TOP, MARKED AS SHOWN, 4" BGS, AT THE SAME POSITION AS THE HIGH POINT ON SAID STONE. BURIED SAID STONE, MARKS DOWN, ON THE EAST SIDE OF NEW MONUMENT.



**BENTON COUNTY CORNER RESTORATION FORM, PAGE 2 OF 2, 155100600R3
SEE CORNER HISTORY FORM FOR RECORDS ETC.**

NEW ACCESSORIES:

SET: REBAR (SEE NOTES) IN PLACE OF SPIKE SET IN RECORD [14], 9" BGS AT THE NORTHERLY END OF A MEADOW, S10°29'20"W, (BASIS OF BEARINGS) 90.14 FEET COMARED TO RECORD [14] OF 90.08 FEET.

SET: REBAR (SEE NOTES) IN STUMP HOLE OF NORTHWEST CSBT PER RECORD [03], 2" DEEP, N50°10'W, 26.10 FEET.

SET: REBAR (SEE NOTES) 6" DEEP AND 5' SOUTH OF AN EAST-WEST WOVEN AND BARBED WIRE FENCE, S85°41'E, 32.26 FEET.

NOTES:

COMPASS DECLINATION IS 20° EAST. ALL MEASURED DISTANCES AND BEARINGS ARE TO THE CENTER OF THE OBJECT, UNLESS OTHERWISE NOTED. ALL BEARING TREES ARE PAINTED AND HAVE A B.T. TAG ATTACHED, FACING THE CORNER UNLESS OTHERWISE NOTED. ALL NEW BEARING TREES HAVE A PLASTIC WASHER (STAMPED "BENTON COUNTY SURVEYOR CORNER RESTORATION") ATTACHED (BY ALUMINUM NAIL) TO THE FACE, BELOW THE "BT" FOR DISTANCE AND ANGLE MEASUREMENT UNLESS OTHERWISE NOTED. ALL SET REBAR ARE 5/8" X 30" AND HAVE A YELLOW PLASTIC CAP (STAMPED "BENTON COUNTY SURVEYOR") ATTACHED TO THE TOP.

THIS DOCUMENT WAS NAMED AND CREATED IN A MANNER SIMILAR TO THE HISTORY FORM.
THE NAME OF THE BOILER PLATE IS "MONUMENT". THE BORDER, STAMP AND SKETCH
ARE FROM AUTOCAD RELEASE 14.

THIS RESTORATION WAS PERFORMED AT THE DIRECTION AND APPROVAL OF
THE BENTON COUNTY SURVEYOR. *dw*

FIRM/AGENCY: BENTON COUNTY SURVEYOR'S OFFICE
ADDRESS: 360 S.W. AVERY AVE. CORVALLIS OR 97333; PH. 766-6821
SURVEYOR: DAVID M. DEAN, P.L.S.
SURVEY CREW: CURTIS J. LIESENFELT, P.L.S. AND JOSH RUDIGER, SURVEY TECH.

REGISTERED
PROFESSIONAL
LAND SURVEYOR

David M. Dean 10-13-99

OREGON
JULY 13, 1984
DAVID M. DEAN
2090

EXPIRES: 12/31/99