

CORNER FILE TRACKING

H:\Survey\Corners\Misc\Filetrac.doc

11/23/98

CORNER NUMBER
155838010

STEP	HISTORY()	RESTORATION()
Form Prepared, DB	8/24/00	7/28/00
Field Inspection, DB	3/26/00	7/26/00
Form Checked, DB	8/15/00	8/15/00
Form Edited, DB	8/30/00	8/30/00
Form Signed, DB	_____	8/30/00
Authorize Payment, DB	_____	_____
Archive Digital Files		
Collect Documents		
Scanned	8-31-00	8-31-00
Copy For Filming		
Filed, DB		
Finish index (count unit)		
Filmed (Archived), DB		

(DB) = Entry needed in database (Access).

COMMENTS:

DONATION LAND CLAIMS

Township 15 South, Range 5 West.

CHAINS

About one half this Claim is good prairie, and one half is covered with W. oak timber, etc.
Finished the survey of this Claim, Oct. 23, 1856.

The following Claim surveyed by Dennis Hathorn, Deputy Surveyor, under Contract No. 19, dated Oct. 8, 1853.

George Belknap.

Not. No. 2493.

Claim No. 38, in T. 15 S., R. 5 W.

Claim No. 38, in T. 15 S., R. 6 W.

240.32 in R. 6 W.

No. acres:-

398.12 in R. 5 W.

Beginning at the NW. cor. in sec. 1; from which

A W. oak, 24 ins. diam., bears S.69° E., 461 L.

A W. oak, 30 ins. diam., bears N.3½° W., 964 L.

Thence

N.89°45'E.,

Var. 19°15'E.

.85 SW. cor. Jesse H. Caton's pasture.

.85 NW. cor. Geo. Belknap's pasture.

1.55 Jesse H. Caton's SW. cor.

14.55 Leave prairie and enter willow thicket, course N. and S.

23.00 Leave same, and enter prairie, course NW. and SW.

59.65 Intersect Tp. line bet. secs. 1 and 6, 14.23 chs. South of cor.

62.00 NE. cor., Geo. Belknap's pasture.

67.00 Leave prairie and enter timber, course N. and S.

79.05 Jesse Caton's SE. cor.

117.25 A creek, 10 lks. wide, course NW.

117.50 Leave timber and enter prairie, course NW. and SE.

139.65 Set post for NE. cor.; from which

A W. oak, 48 ins. diam., bears S.85° E., 269 L.

A W. oak, 20 ins. diam., bears N.32½° E., 314 L.

77 BELKNAP
PLC 38 →

Thence

6 (3)

Survey # 61 N.E. cor. Prior Scott D.L.C. 44 Tp 12-5
 W.C. Fallaway Stone From orig. stone
 Anchor post bears S. 56° 10' W. 527' 16" S. 65° E. 1113
 14" S. 32 1/2° E. 965
 24" S. 52° 20' E. 1302
 Willow 14" S. 22' W. 1145
 N.E. cor. main house S. 37° 53' W. 2387
 Witness J. Marion Wilkes Apr. 7, 1910.

" S.E. cor. Prior Scott D.L.C. 44 Tp. 12-5
 Set 3/4" pipe. Found orig. cor.
 An oak 30" in dia. bears N. 48° E. 1300' con. std.
 " 24" " " N. 60° 30' W. 75' "
 Witness J. Marion Wilkes & John Hayes. Apr. 8, 1910.

" S.W. Exterior
 Set oak stake 4" x 1" x 24" orig. cor.
 An oak 12" in dia. bears N. 76° E. 182' std.
 " 18" " " S. 66° E. 75' " Apr. 9, 1910.
 Witness J. Marion Wilkes, J. Hayes & Clyde Hayes.

" Int. cor. Prior Scott Cl. 44 T. 12-5
 Set oak stake 2" x 4" x 24" orig. cor. one stump std.
 An oak 10" in dia. bears S. 55° E. 772'
 " 12" " " N. 2° 20' W. 715'
 Witness J. Marion Wilkes, J. Hayes & Clyde Hayes Apr. 9, 1910.

" S.W. cor. Prior Scott Cl. 44 T. 12-5
 Set stone 8" x 8" x 8" Prior
 Maple 10" in dia. bears S. 23° 05' W. 916' not mhd. yard tree.
 Poplar 20" " " S. 56° 50' E. 1,125'
 No witnesses

63
 W.C.G. N.E. cor. Geo. Belknap D.L.C. #38 Tp. 15-5.
 Set stone 7" x 8" x 8" under stone 7" x 8" x 16"
 Oak 20" in dia. bears N. 32° E. 314' std.
 " S.E. Witness Frank Zanadsky Apr. 19, 1910.
 Set stone 6" x 6" x 12" stump std.
 An oak 20" in dia. bears N. 32° 53' E. 896'
 " " 36" " " N. 85° W. 24' std.
 Witness Gilbert Belknap & G.H. Belknap Apr. 29, 1910.

7 BELKNAP
 D.L.C. 38

" 1/4 sec. cor. between nos. 6 & 7 Tp. 15-5.
 Set stone 8" x 8"
 An oak 10" in dia. bears S. 84° 49' W. 1,130'
 " 18" " " N. 13° W. 68' std.

64
 W.C.G. 1/4 sec. cor. bet. secs. 25 & 30 Tp 13-5 & 6
 Set 1 1/2" pipe Fir stump std.
 Fir 60" in dia. bears N. 3° 58' E. 380'
 " 92" " " N. 72° 55' E. 410'

" Sec. cor. between nos. 24, 25, 19 & 30. Tr. 13-5 & 6.
 Set stone three stump std.
 Fir 12" in dia. bears N. 9° 28' E. 1,052'
 Oak 8" " " " S. 61° E. 1,651' std.
 Fir 8" " " " S. 18° 16' W. 1,46'
 " 7" " " " N. 47° 10' W. 539'

Witness A.M. Smith
 " for 1/4 cor. A.M. Smith, T.R.S. Haws and Wm. Hall. May 17, 1910.
 May 16, 1910

(4)

Northeast Corner George Belknap DLC 38 Twp. 15-5

2891

Reestablishment by W. C. Galloway

April 19, 1910

Set stone 7" x 8" x 8" under stone 7" x 8" x 16"
Oak 20" in diam bears N 32° E 3.14 chains (standing)

Witness Frank Zanadsky

Sec. 6

7 G. BELKNAP
DLC #38

E.S.E.

Southeast Corner George Belknap DLC 38, Twp. 15-5

2892

Reestablishment by W. C. Galloway

April 29, 1910

Set stone 7" x 8" x 8" (stump standing)
Oak 20" in diam bears N 32°53' E .896 chains
Oak 36" in diam bears N 85° W .24 Chains (standing)

Witness Gilbert Belknap & E. H. Belknap

Sec. 6

Most N. N. E. corner of William Crow Cl 42, Twp. 15-5

2893

Reestablishment by W. C. Galloway

May 8, 1944

Stone at fence corner 5" x 7" x 10"
W. Fir 16" in diam bears South .079 chains
Set 1" pipe south .215 chains

Witnesses Ed P. Rickard

Sec. 2

DATE 03/24/2000TOWNSHIP 15 SOUTH, RANGE 5 WEST, WILLAMETTE MERIDIAN; SECTION 6 CORNER N/A
DONATION LAND CLAIM GEORGE BELKNAP NO. 38 CORNER NE**COMMON CORNER(S):**

NONE

RECORDS (INFORMATION IN BOLD ITALICS IS COUNTY STAFFS' INTERPRETATION OF THE RECORD)

- [01] ORIGINAL GENERAL LAND OFFICE (GLO) NOTES BY DENNIS HATHORN, D.S., DATED DECEMBER 31, 1853. *SET POST WITH 2 OAK BEARING TREES, MEASURED TO THE FACE.*
- [02] COUNTY SURVEY NO. 162 NOTES (FIELD BOOK 5, PAGE 10) BY W. C. GALLOWAY, D.C.S., NO DATE GIVEN. *FOUND 1 GLO BEARING TREE, SET 2 MARKED STONES.*
- [03] OLD CORNER RESTORATION BOOK NO. 1, PAGE 6 BY W. C. GALLOWAY, D.C.S., DATED APRIL 19, 1910. *SAME INFORMATION AS RECORD [02].*
- [04] RESTORATION NO. 2891. *TRANSCRIBED COPY OF RECORD [03] AND MAY CONTAIN ERRORS AND OMISSIONS.*
- [05] COUNTY SURVEY NO. 162 MAP PER "RECORD OF PLATS BOOK 3", PAGE 55 BY W. C. GALLOWAY, D.C.S. NO DATE GIVEN. *STONE UNDER STONE.*
- [06] COUNTY SURVEY NO. 162 PER FILE, BY W. C. GALLOWAY, D.C.S., NO DATE GIVEN. *STONE OVER STONE.*
- [07] MAP NO. 15-5&6-00006 BY W. C. GALLOWAY, D.C.S., DATED APRIL 1910 AND NOVEMBER 1913. *STONE OVER STONE WITH 1 GLO BEARING TREE.*
- [08] MAP NO. 15-5-00005 BY BENTON COUNTY, NO DATE GIVEN. *NO MONUMENT DESCRIPTION.*
- [09] COUNTY SURVEY NO. 3909 BY JOHN LAURILA, JR., P.E., DATED APRIL 19, 1964. *FOUND MARKED STONE AND MARKED 2 NEW OAK BEARING TREES.*
- [10] COUNTY SURVEY NO. 4209 BY JOHN GANNON, P.L.S., DATED MARCH 1, 1966. *FOUND MARKED STONE.*
- [11] COUNTY SURVEY NO. 5461 BY R. S. CASTLEBERRY, P.L.S., DATED APRIL 24, 1973. *FOUND MARKED STONE AT FENCE CORNER.*
- [12] MINOR LAND PARTITION NO. 11 BY UNKNOWN SCRIBNER, DATED SEPTEMBER 18, 1981. *NO MONUMENT DESCRIPTION.*

COMMENTS/LOCATION/ETC:**NOTES:**

THIS IS A MICROSOFT WORD 97 DOCUMENT NAMED "55838010" CREATED FROM A BOILER PLATE DOCUMENT NAMED "HISTORY", WHICH HAS A STYLESHEET NAMED "CORNER" ATTACHED TO IT.

FIRM/AGENCY: BENTON COUNTY SURVEYOR'S OFFICE
ADDRESS: 360 S.W. AVERY AVE. CORVALLIS OR 97333; PH. 766-6821
RESEARCH BY: DAVID M. DEAN, P.L.S.
DATA ENTRY BY: DEAN

SEE CORNER HISTORY FORM FOR RECORDS ETC.

CORNER RESTORATION FIELD BOOK NUMBER 18 PAGE(S) 44 - 45 & 63 DATE 07/28/2000
TOWNSHIP 15 SOUTH, RANGE 5 WEST, WILLAMETTE MERIDIAN; SECTION 6 CORNER N/A
DONATION LAND CLAIM GEORGE BELKNAP CORNER NE
CONDITION REPORT ___; **REFERENCED OUT** ___; **RENEWED** XX; **SURVEYED IN** ___

LOCATION AND COMMENTS:

CORNER IS LOCATED IN A PASTURE, 42 FEET WEST OF A NORTH/SOUTH WOVEN AND BARBED WIRE FENCE. TO REACH CORNER FROM THE JUNCTION OF COON AND CHERRY CREEK ROADS, TRAVEL SOUTHERLY AND EASTERLY ON CHERRY CREEK ROAD FOR 1.70 MILES TO GRAVEL DRIVEWAY ON RIGHT, THEN NORTHERLY ON DRIVEWAY FOR 0.28 MILES, THEN EASTERLY ACROSS PASTURE FOR ±600 FEET TO CORNER. CORNER IS GOOD FOR PERMARKING AND GPS CONTROL.

MONUMENTS AND ACCESSORIES FOUND (CONDITION AND SOURCE):

FOUND: 8" X 10" X 7" BROKEN STONE, UP 6" WITH "CS" ON WEST FACE, IN NORTH/SOUTH WOVEN AND BARBED WIRE FENCE, N81°26'E, 42.15 FEET. THIS STONE IS THE TOP HALF OF THE SURFACE STONE SET IN RECORD [02]. REMOVED STONE FROM FOUND POSITION AND BURIED WITH OTHER STONES AS NOTED BELOW.

(FOUND MARKED STONE AND MADE 2 NEW OAK BEARING TREES PER RECORD [09]).

(FOUND MARKED STONE PER RECORDS [10] AND [11]).

FOUND: GLO BEARING TREE, NOW A 32" OAK STUMP WHICH WE OPENED TO VISIBLE SCRIBING "BT" AND NOTCH. HELD RECORD GLO BEARING AND DISTANCE TO FACE OF STUMP (N32°45'E, 207.24 FEET) TO PERPETUATE THE CORNER.

(20" OAK N32°45'E, 207.24 FEET PER RECORD [01]).

(20" OAK N32°E, 207.24 FEET (TO RECORD [02] POSITION) PER RECORDS [02], [03] AND [07]).

FOUND: 8" X 10" X 7" BROKEN STONE, 12" DEEP IN PASTURE, BEING THE BOTTOM HALF OF AFOREMENTIONED STONE, OVER A 9" X 6" X 6" STONE, 21" DEEP WITH "CS" ON THE SOUTHERLY FACE. REMOVED BOTH STONES AND SET A REBAR (SEE NOTES) 12" DEEP, IN THE SAME X,Y POSITION AS THE HIGH POINT ON THE BOTTOM STONE, N79°18'E, 17.20 FEET. BURIED ALL THREE SAID FOUND STONES (MARKS DOWN) AROUND REBAR AT A DEPTH OF 14".

(CORNER STONE 8" X 8" X 7" ALSO STONE SET OVER FIRST STONE 8" X 7" X 16" BOTH MARKED CS PER RECORD [02]).

(SET STONE 7" X 8" X 8" UNDER STONE 7" X 8" X 16" PER RECORD [03] AND [05]).

(STONE 7" X 8" X 16" OVER STONE 8" X 8" X 7" PER RECORD [07]).

FOUND: 6" X 8" X 7" STONE WITH "CS" ON WEST FACE, 2" BELOW GROUND SURFACE AT THE SOUTHEAST CORNER OF THE GEORGE BELKNAP D.L.C. NO. 38, S0°03'32"E, 2236.34 FEET.

(6" X 6" X 12" STONE S0°31'W, 2239.84 FEET PER RECORDS [06] AND [07]).

FOUND: 3/4" IRON PIPE 2" ABOVE GROUND LEVEL AT THE SECTION CORNER COMMON TO SECTIONS 5 AND 6, T15S, R5W AND SECTIONS 31 AND 32, T14S, R5W, N1°58'40"E, 890.59 FEET.

(STAKE PER RECORD [05]).

(3/4" PIPE PER RECORDS [06], [07], [09] - [11]).

FOUND: 16" OAK STUMP BEARING TREE PER RECORD [09], SET ALUMINUM NAIL AND ORANGE PLASTIC WASHER IN CENTER OF STUMP, N46°48'E, 62.83 FEET.

(10" OAK N6°35'E, 36.80 FEET PER RECORD [09]).

FOUND: 24" OAK BEARING TREE PER RECORD [09] WITH HEALED FACE. BLAZED AND RESCRIBED WITH "X BT", SET ALUMINUM NAIL AND ORANGE PLASTIC WASHER IN NORTHERLY BASE FOR DISTANCE MEASUREMENT, N80°16'E, 95.14 FEET.

(21" OAK, EAST, 53.30 FEET PER RECORD [09]).

MONUMENT SET (PROCEDURES AND DESCRIPTION):

SET 2" X 36" GALVANIZED IRON PIPE WITH A 3 1/4" BRASS DISK MARKED AS SHOWN, 12" DEEP IN A PASTURE. THE POSITION OF THIS CORNER WAS CALCULATED BY RECORD [01] BEARING AND DISTANCE FROM THE FACE OF THE ABOVE NOTED 32" OAK STUMP GLO BEARING TREE. BEARINGS ARE BASED ON A SOLAR OBSERVATION (HOUR ANGLE METHOD) NEAR THE SAID MONUMENTED CORNER.

THE MONUMENTS (MARKED STONES) SET IN COUNTY SURVEY NO. 162 (RECORD NO. [02]) WERE CONSIDERED AND REJECTED AS THE TRUE CORNER BASED ON THE FOLLOWING:

1. FOUND NUMEROUS DISCREPANCIES IN THE FIELD BOOK (BK 5, PG 9-15) WHEN COMPARED TO THE MAPS (RECORDS [06] AND [07]) OF RECORD.
2. DUBIOUS STATEMENT IN SAID FIELD BOOK ON PAGE 10, I.E. "FOUND ORIG. COR." IT IS PATENTLY UNCLER IF THE SURVEYOR IS REFERING TO A PHYSICAL MONUMENT OR A CORNER POSITION BASED ON THE RECOVERY OF A GLO BEARING TREE.
3. DISCREPANCY IN MEASUREMENTS FROM THE MONUMENT (STONE) TO THE RECOVERED GLO BEARING TREE. RECORD PER SAID FIELD BOOK 5, PAGE 10 IS N32°E, 207.24 FEET COMPARED TO MEASURED OF N29°05'34"E 195.81 FEET.
4. INDEXING COUNTY SURVEY 162 DISTANCES WITH GLO DISTANCES BASED ON C.S. 162 DISTANCES ALONG THE SOUTH LINE OF CLAIM NO. 38 YIELD A COMPARISON OF 4 LINKS ALONG THE NORTH LINE OF SAID CLAIM WITH OUR MONUMENTED POSITION, BUT A DISCREPANCY OF 31 LINKS TO THE POSITION (STONE) MONUMENTED IN C.S. 162. THE EAST LINE OF THE CLAIM HAS A COMPARISON OF 1 LINK BASED ON OUR MONUMENTED POSITION, BUT A DISCREPANCY OF 6 LINKS WHEN USING THE POSITION (STONE) MONUMENTED BY C.S. 162. ALSO A PASSING CALL TO THE 1/4 CORNER BETWEEN SECTION 5 AND 6 HAS AN INDEX COMPARISON OF 1 LINK BASED ON OUR MONUMENTED POSITION, BUT A 3 LINK DISCREPANCY WHEN COMPARED TO C.S. 162 MONUMENTED POSITION.

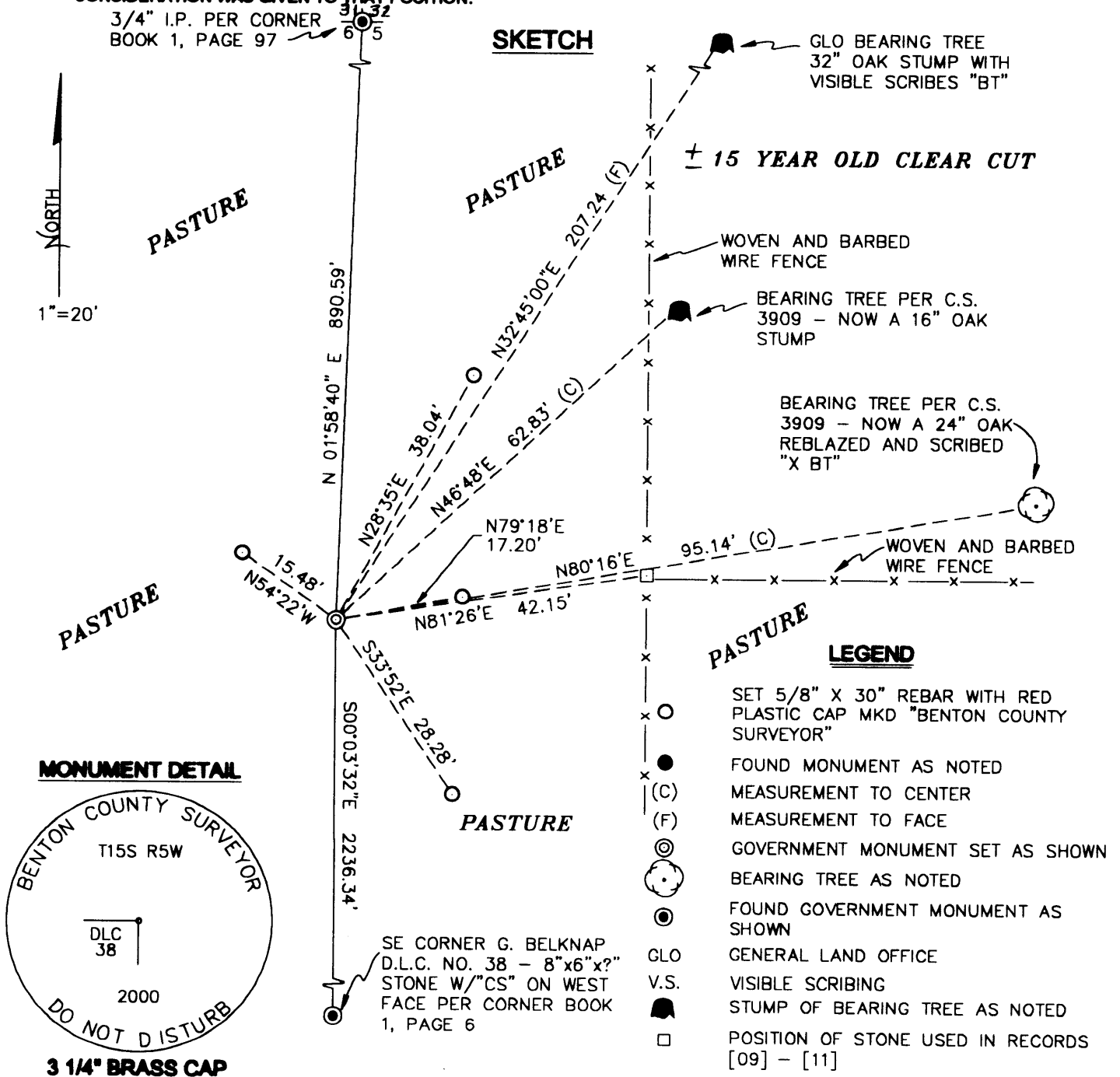
SEE CORNER HISTORY FORM FOR RECORDS ETC.

5. GLO BEARINGS ALONG THE EAST LINE OF THE SUBJECT CLAIM AND THE SECTION LINE COMMON TO SECTION 5 AND 6 ARE RECORDED AS BEING WITHIN 9 MINUTES OF PARRALLELISM, DIVERGING FROM NORTH TO SOUTH. OUR MONUMENTED POSITION HAS A DIVERGENCE FROM NORTH TO SOUTH OF 23 MINUTES, WHILE C.S. NO. 162 POSITION (STONE) WOULD YIELD A 49 MINUTE DIVERGENCE FROM NORTH TO SOUTH.

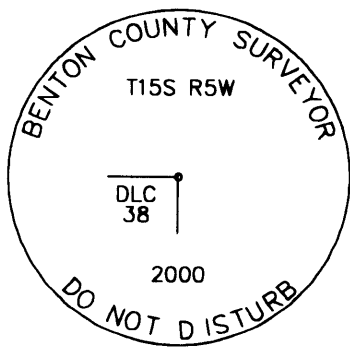
IN SUMMATION, IN HOUSE DISCUSSION CONCERNING THE POSITION OF THE SUBJECT CORNER WAS PROTRACTED AND ALL EVIDENCE WAS WHOLLY EVALUATED IN AN EFFORT TO ACCEPT THE POSITION AS MONUMENTED BY C.S. 162. HOWEVER, BASED ON THE PREPONDERANCE OF EVIDENCE, WE CONCLUDE THAT THE MONUMENTS (STONES) SET IN SAID C.S. 162 WERE SOMEHOW SET IN ERROR. FURTHERMORE, THE CORNER POSITION USED IN RECORDS [09] - [11] IS AN OSTENSIBLE BLUNDER AND NO CONSIDERATION WAS GIVEN TO THAT POSITION.

3/4" I.P. PER CORNER
BOOK 1, PAGE 97

SKETCH



MONUMENT DETAIL



3 1/4" BRASS CAP

LEGEND

- SET 5/8" X 30" REBAR WITH RED PLASTIC CAP MKD "BENTON COUNTY SURVEYOR"
- FOUND MONUMENT AS NOTED
- (C) MEASUREMENT TO CENTER
- (F) MEASUREMENT TO FACE
- ⊙ GOVERNMENT MONUMENT SET AS SHOWN
- ⊙ BEARING TREE AS NOTED
- ⊙ FOUND GOVERNMENT MONUMENT AS SHOWN
- GLO GENERAL LAND OFFICE
- V.S. VISIBLE SCRIBING
- STUMP OF BEARING TREE AS NOTED
- POSITION OF STONE USED IN RECORDS [09] - [11]

NEW ACCESSORIES:

- SET: REBAR (SEE NOTES) 8" BELOW GROUND LEVEL, N54°22'W, 15.48 FEET.
- SET: REBAR (SEE NOTES) 8" BELOW GROUND LEVEL, N28°35'E, 38.04 FEET.
- SET: REBAR (SEE NOTES) 9" BELOW GROUND LEVEL, S33°52'E, 28.28 FEET

NOTES:

COMPASS DECLINATION IS 28° EAST. ALL MEASURED DISTANCES AND BEARINGS ARE TO THE CENTER OF THE OBJECT, UNLESS OTHERWISE NOTED. ALL BEARING TREES ARE PAINTED AND HAVE A B.T. TAG ATTACHED, FACING THE CORNER UNLESS OTHERWISE NOTED. ALL NEW BEARING TREES HAVE A PLASTIC WASHER (STAMPED "BENTON COUNTY SURVEYOR CORNER RESTORATION") ATTACHED (BY ALUMINUM NAIL) TO THE FACE, BELOW THE "BT" FOR DISTANCE AND ANGLE MEASUREMENT UNLESS OTHERWISE NOTED. ALL SET REBAR ARE 5/8" X 30" AND HAVE A RED PLASTIC CAP (STAMPED "BENTON COUNTY SURVEYOR") ATTACHED TO THE TOP.

THIS DOCUMENT WAS NAMED AND CREATED IN A MANNER SIMILAR TO THE HISTORY FORM. THE NAME OF THE BOILER PLATE IS "MONUMENT". THE SKETCH IS FROM AUTOCAD RELEASE 14. THIS RESTORATION WAS PERFORMED AT THE DIRECTION AND APPROVAL OF THE BENTON COUNTY SURVEYOR DM

FIRM/AGENCY: BENTON COUNTY SURVEYOR'S OFFICE
ADDRESS: 360 S.W. AVERY AVE. CORVALLIS OR 97333; PH. 766-6821
SURVEYOR: DAVID M. DEAN, P.L.S.
SURVEY CREW: CURT LIEBENFELT, P.L.S. AND JOSH RUDIGER, SURVEY TECH.

REGISTERED
PROFESSIONAL
LAND SURVEYOR

David M. Dean 8/30/00

OREGON
JULY 13, 1984
DAVID M. DEAN
2090

RENEWAL DATE: 12/31/01