

DATE 10/12/1998TOWNSHIP 15 SOUTH, RANGE 5 WEST, WILLAMETTE MERIDIAN; SECTION 06 CORNER  
DONATION LAND CLAIM GEORGE BELKNAP NO. 38 CORNER ANG. PT. S LINE**COMMON CORNER(S):**

NORTHWEST CORNER SECTION 7, T15S, R5W  
 SOUTHWEST CORNER SECTION 6, T15S, R5W  
 SOUTHEAST SECTION 1, T15S, R6W  
 NORTHEAST CORNER SECTION 12, T15S, R6W  
 SEE CORNER FILE 155100600 FOR RECTANGULAR CORNER INFORMATION.

**CORNER RECORDS (PREVIOUS RENEWALS, SURVEYS, ETC.)**

- [01] ORIGINAL GLO SURVEY BY JAMES FREEMAN, D.S., DATED OCTOBER 7, 1852. *SET POST WITH 4 OAK BEARING TREES, MEASURED TO FACE.*
- [02] ORIGINAL GLO SURVEY OF THE GEORGE BELKNAP D.L.C. NO. 38 BY DENNIS HATHORN, D.S., DATED DECEMBER 31, 1853. *NO MONUMET DESCRIPTION.*
- [03] COUNTY SURVEY NO. 162 FIELD NOTES (BOOK 5, PAGE 13) BY W. C. GALLOWAY, UNKNOWN DATE. *SET 6"x10"x12" STONE WITH 4 OAK BEARING TREES.*
- [04] OLD CORNER RESTORATION BOOK NO. 1, PAGE 97 BY W. C. GALLOWAY, D.C.S. & C.S., DATED APRIL 1910 AND JULY 21, 1915. *ANGLE CORNER ON SOUTH LINE GEORGE BELKNAP AND SECTION CORNER. GLO TREES DOWN AND DEAD, SET STONE WITH 4 OAK BEARING TREES (MARKED IN 1915).*
- [05] CORNER RESTORATION NO. 2895. *TRANSCRIBED COPY OF RECORD [04] AND MAY CONTAIN ERRORS AND OMMSIONS.*
- [06] COUNTY SURVEY NO. 162 MAP BY W. C. GALLOWAY, UNKNOWN DATE. *6"x10"x12" STONE.*
- [07] MAP NO. 15-5&6-00006 BY W. C. GALLOWAY, D.C.S & D.S., DATED APRIL 1910 – NOVEMBER 1913. *SET 6"x10"x12" STONE WITH 4 OAK BEARING TREES.*
- [08] COUNTY SURVEY NO. 525 FIELD NOTES (BOOK 20, PAGE 22) BY W. C. GALLOWAY, C.S., DATED JULY 19, 1915. *SET 6"x10"x12" STONE WITH 4 OAK BEARING TREES.*
- [09] COUNTY SURVEY NO. 538 FIELD NOTES (BOOK 20, PAGE 63) BY W. C. GALLOWAY, C.S., DATED JANUARY 10, 1916. *NO MONUMENT DESCRIPTION.*
- [10] LANE COUNTY SURVEY NO. 26873 BY CHARLES W. GUILLE, P.L.S., DATED OCTOBER 17, 1984. *FOUND STONE AND 2 BEARING TREES, MARKED 2 NEW TREES.*
- [11] LANE COUNTY CORNER RESTORATION NO. 9824 BY CHARLES W. GUILLE, P.L.S., DATED OCTOBER 17, 1984. *FOUND MARKED STONE AND 2 BEARING TREES, MARKED 2 NEW TREES.*
- [12] CORNER RESTORATION NO. 3327 BY CHARLES W. GUILLE, P.L.S., DATED FEBRUARY 15, 1985. *FOUND MARKED STONE WITH 2 OAK, COUNTY SURVEYOR BEARING TREES. MARKED 2 NEW FIR BEARING TREES.*
- [13] COUNTY SURVEY NO. 8892 BY JIM S. PETERSON, P.L.S., DATED JUNE 20, 1994. *FOUND STONE WITH VISIBLE MARKS AND 5 BEARING TREES.*
- [14] BENTON COUNTY GIS/DEA MAPPING PROJECT BY RAY WILSON, C.S. AND TYLER PARSONS, P.L.S., DATED JUNE – JULY 1997. *FOUND STONE AND TIED WITH RTK/GPS.*

**HORIZONTAL AND VERTICAL INFORMATION:****HORIZONTAL DATUM:**

LATITUDE:  
 LONGITUDE:

**VERTICAL DATUM:**

ELLIPSOID ELEVATION:  
 ORTHOMETRIC ELEVATION:  
 GEOID SEPERATION:

**STATE PLANE COORDINATE SYSTEM:**

N (Y):  
 E (X):  
 SCALE FACTOR:  
 COMBINED FACTOR:  
 CONVERGENCE:

**NOTES:**

THIS IS A MICROSOFT WORD 97 DOCUMENT NAMED "55100600" CREATED FROM A BOILER PLATE DOCUMENT NAMED "HISTORY", WHICH HAS A STYLESHEET NAMED "CORNER" ATTACHED TO IT.  
 INFORMATION IN ***BOLD ITALICS*** IS COUNTY STAFFS' INTERPRETATION OF THE RECORD.

**FIRM/AGENCY:** BENTON COUNTY SURVEYOR'S OFFICE  
**ADDRESS:** 360 S.W. AVERY AVE. CORVALLIS OR 97333; PH. 757-6821  
**RESEARCH BY:** DAVID M. DEAN, P.L.S.  
**DATA ENTRY BY:** DAVID M. DEAN

SEE CORNER HISTORY FORM FOR RECORDS ETC.

**NEW ACCESSORIES:**

SET: REBAR (SEE NOTES) IN PLACE OF SPIKE SET IN RECORD [14], 9" BGS AT THE NORTHERLY END OF A MEADOW, S10°29'20"W, (BASIS OF BEARINGS) 90.14 FEET COMARED TO RECORD [14] OF 90.08 FEET.

SET: REBAR (SEE NOTES) IN STUMP HOLE OF NORTHWEST CSBT PER RECORD [03], 2" DEEP, N50°10'W, 26.10 FEET.

SET: REBAR (SEE NOTES) 6" DEEP AND 5' SOUTH OF AN EAST-WEST WOVEN AND BARBED WIRE FENCE, S85°41'E, 32.26 FEET.

**NOTES:**

COMPASS DECLINATION IS 20° EAST. ALL MEASURED DISTANCES AND BEARINGS ARE TO THE CENTER OF THE OBJECT, UNLESS OTHERWISE NOTED. ALL BEARING TREES ARE PAINTED AND HAVE A B.T. TAG ATTACHED, FACING THE CORNER UNLESS OTHERWISE NOTED. ALL NEW BEARING TREES HAVE A PLASTIC WASHER (STAMPED "BENTON COUNTY SURVEYOR CORNER RESTORATION") ATTACHED (BY ALUMNUM NAIL) TO THE FACE, BELOW THE "BT" FOR DISTANCE AND ANGLE MEASUREMENT UNLESS OTHERWISE NOTED. ALL SET REBAR ARE 5/8" X 30" AND HAVE A YELLOW PLASTIC CAP (STAMPED "BENTON COUNTY SURVEYOR") ATTACHED TO THE TOP.

THIS DOCUMENT WAS NAMED AND CREATED IN A MANNER SIMILAR TO THE HISTORY FORM. THE NAME OF THE BOILER PLATE IS "MONUMENT". THE BORDER, STAMP AND SKETCH ARE FROM AUTOCAD RELEASE 14.

THIS RESTORATION WAS PERFORMED AT THE DIRECTION AND APPROVAL OF THE BENTON COUNTY SURVEYOR. DMD

REGISTERED  
PROFESSIONAL  
LAND SURVEYOR

*David M. Dean* 10-13-99

OREGON  
JULY 13, 1984  
DAVID M. DEAN  
2090

**FIRM/AGENCY:** BENTON COUNTY SURVEYOR'S OFFICE  
**ADDRESS:** 360 S.W. AVERY AVE. CORVALLIS OR 97333; PH. 766-6821  
**SURVEYOR:** DAVID M. DEAN, P.L.S.  
**SURVEY CREW:** CURTIS J. LIESENFELT, P.L.S. AND JOSH RUDIGER, SURVEY TECH.

EXPIRES: 12/31/99

**BENTON COUNTY CORNER RESTORATION FORM, PAGE 1 OF 2, 155838030R3**

**SEE CORNER HISTORY FORM FOR RECORDS ETC.**

**CORNER RESTORATION FIELD BOOK NUMBER 18 PAGE(S) 7 & 8** **DATE 07/15/1999**  
**TOWNSHIP 15 SOUTH, RANGE 5 WEST, WILLAMETTE MERIDIAN; SECTION 06 CORNER**  
**DONATION LAND CLAIM GEORGE BELKNAP NO. 38** **CORNER ANG. PT. S LINE**  
**CONDITION REPORT** \_\_\_; **REFERENCED OUT** \_\_\_; **RENEWED XX**; **SURVEYED IN** \_\_\_

**LOCATION AND COMMENTS:**

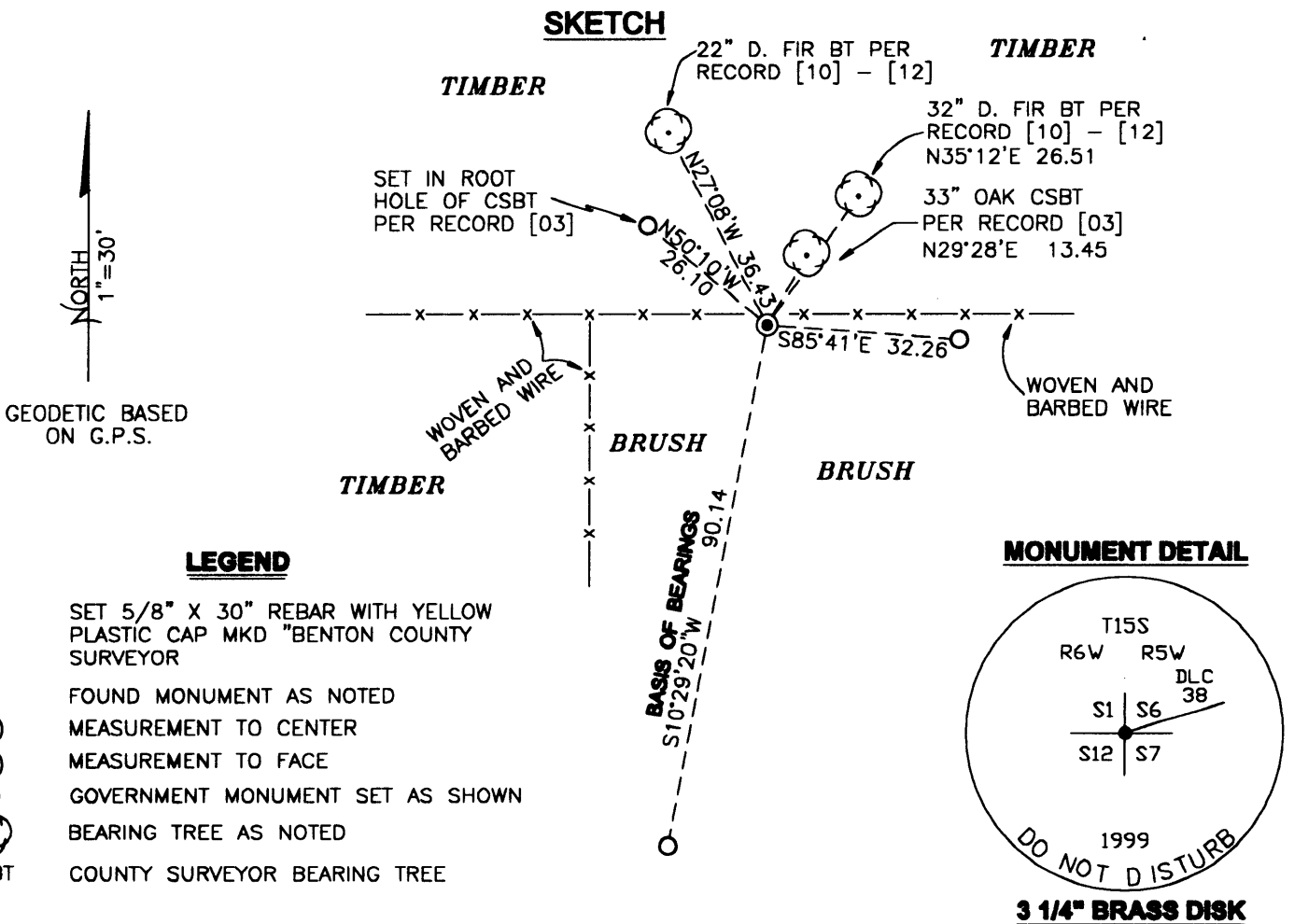
CORNER IS LOCATED IN AN EAST-WEST, WOVEN AND BARBED WIRE FENCE, ON A GENTLE NORTH SLOPE, WITH FIR AND HARDWOODS TO THE NORTH AND MOSTLY BRUSH AND BLACKBERRIES TO THE SOUTH. FROM THE JUNCTION OF BELLFOUNTAIN, NICHOLS AND CHERRY CREEK ROADS, GO EASTERLY ON CHERRY CREEK ROAD FOR 0.95 MILES (25352 CHERRY CREEK ROAD); THEN RIGHT (SOUTHERLY) ON A PRIVATE GRAVEL ROAD FOR 0.53 MILES; THEN NORTHERLY ON A DRIVEWAY FOR 150± FEET; THEN WALK NORTHERLY FOR 150± FEET TO CORNER.

**MONUMENTS AND ACCESSORIES FOUND (CONDITION AND SOURCE):**

- FOUND:** 14" x 10" x 6" STONE, FIRMLY SET, 3" BELOW GROUND SURFACE (BGS) WITH "SEC CORNER" MARKED ON THE NORTHEASTERLY FACE AND A SHALLOW "X" SCRIBED ON THE HIGH POINT.  
 (SET STONE 6"x10"x12" PER RECORD [03]).  
 (SEE RECORDS [04] - [08] AND [10] - [14] FOR SIMILAR INFORMATION)
- FOUND:** 33" WHITE OAK COUNTY SURVEYOR BEARING TREE (CSBT) WITH UPPER FACE HAVING BEEN OPENED WITH A SAW WHICH HAS MOSTLY OVERGROWN AGAIN AND A HEALED LOWER BLAZE, BEARING N29°28'E, 13.45 FEET TO CENTER. SET AN ALUMINUM NAIL AND ORANGE PLASTIC WASHER IN THE NORTHWEST BASE.  
 (15" OAK, N25°30'E, 13.33 FEET PER RECORD [03], [04], [07], [08] & [13]).  
 (26" OAK, N30°15'E, 13.5 FEET PER RECORD [10] - [12]).
- FOUND:** PROBABLE REMAINS OF THE GENERAL LAND OFFICE (GLO) NORTHEAST BEARING TREE, NOW ROTTED REMAINS OF AN OAK WITH NO VISIBLE MARKS, LYING CLOSE TO THE GLO (N25°E, 37 LINKS) POSITION.
- FOUND:** 32" D. FIR WITH HEALED FACE BEARING N35°12'E, 26.51 FEET TO CENTER. SET ALUMINUM NAIL AND ORANGE PLASTIC WASHER IN SOUTHEAST BASE.  
 (26" D. FIR N37°30'E, 26.5 FEET PER RECORD [10] - [12]).
- FOUND:** SAWED AND ROTTED REMAINS OF CSBT PER RECORD [03] WITH VISIBLE REVERSE SCRIBING "63 BT" ON A 2 FOOT LONG SAWED CHUNK LYING CLOSE TO RECORD (24" OAK, N51°30'W, .386 CHAINS) POSITION. SET REBAR (SEE NOTES) IN STUMP HOLE AS NOTED IN NEW ACCESSORIES BELOW.
- FOUND:** 22" D. FIR WITH HEALED FACE BEARING N27°08'W, 36.43 FEET TO CENTER. SET ALUMINUM NAIL AND ORANGE PLASTIC WASHER IN SOUTHWEST BASE.  
 (19" FIR N24°45'W, 36.8 FEET PER RECORDS [10] - [12]).

**MONUMENT SET (PROCEDURES AND DESCRIPTION):**

REMOVED SAID FOUND STONE AND SET A 2" INSIDE DIAMETER X 36" GALVANIZED IRON PIPE WITH A 3 1/4" BRASS DISK CONCRETED IN THE TOP, MARKED AS SHOWN, 4" BGS, AT THE SAME POSITION AS THE HIGH POINT ON SAID STONE. BURIED SAID STONE, MARKS DOWN, ON THE EAST SIDE OF NEW MONUMENT.



**LEGEND**

- SET 5/8" X 30" REBAR WITH YELLOW PLASTIC CAP MKD "BENTON COUNTY SURVEYOR"
- FOUND MONUMENT AS NOTED
- (C) MEASUREMENT TO CENTER
- (F) MEASUREMENT TO FACE
- ⊙ GOVERNMENT MONUMENT SET AS SHOWN
- ⊙ BEARING TREE AS NOTED
- CSBT COUNTY SURVEYOR BEARING TREE

**MONUMENT DETAIL**

