

CORNER FILE TRACKING

H:\Survey\Corners\Misc\Filetrac.doc

11/23/98

CORNER NUMBER
155842050

STEP	HISTORY()	RESTORATION()
Form Prepared, DB	5/10/02	5/14/02
Field Inspection, DB	5/14/02	5/14/02
Form Checked, DB	5/28/02	5/28/02
Form Edited, DB	5/29/02	5/29/02
Form Signed, DB	5/29/02	5/29/02
Authorize Payment, DB	_____	_____
Archive Digital Files	5/29/02	5/29/02
Collect Documents	5/29/02	5/29/02
Scanned	12/12/02	12/12/02
Copy For Filming	5/29/02	5/29/02
Filed, DB		
Finish index (count unit)		
Filmed (Archived), DB		

(DB) = Entry needed in database (Access).

COMMENTS:

C.S. 126 by W.C.G.
Apr. 24, 1942
Waller Fauerso
Everett Padgett

1/4 Sec. Cor. bet. Secs. 16 and 17 T 14-8
Set 1/2" pipe, Orig. cor. Notch in old log at cor.
Fir 24" in dia. bears S. 1° E. 1.34 std.
" 24" " " " S 2° W. 1.25 "

W.C.G. and
V.M. Patterson
Aug. 7, 1942.

1/4 Sec. Cor. bet. Secs. 15 and 16 T 14-8
Set a 3/4" pipe 20 lks. N. of cr.
Maple 12" now 22" in dia. bears S. 60° W. .59 chs. std. S. of cr.
Mkd. Alder 28" " " " S. 78 1/2° E. .877 " measure to 1 on N. of tree
" Fir 56" " " " S. 27 1/2° E. .5929 " ahead of nail on W. S 23° 04' E.

C.S. 362
by W.C.G.
Rooted Lumber
and O. Ed. Mesacher
David Roe
Sep. 27, 1943

1/4 Sec. Cor. bet. Secs. 19 and 20 T 14-8
Set 3/4" bolt
Fir 18" in dia. bears S 9° W. .05 chs. std. dead. Other tree down
Mkd. Cedar 9" " " N 32 1/2° E. 124 "
Fir 30" in " " " S. 70° E. .355 " not mkd.
Mkd. Maple 15" " " N. 84° W. .129 "

As above
also Geo. W. Shannon
and father were
there
Sept. 29, 1943

1/4 Sec. cor. bet. Secs. 20 and 29 T. 14-8
Set 3/4" pipe
Alder 30" in dia. bears N 37 1/2° E. .06 and Alder 30" S 56 1/2° E 48" both ^{down}
Mkd. Maple 40" in dia. bears N 3° 50' E. 1.651 chs. mark W.
" Ash 26" " " " N. 75 1/2° E. .526 " " N.


by W.C.G.
Mesacher and
David Roe
Sept 29, 1943

Corner to Sections 19, 20, 29 and 30 T 14-8
Set a Studebaker car axle with Timkin bearing. ^{Sharp ridge.} ^{Stop hill side, W. of cr., E of}
Fir 10" in dia. bears S. 71° W. .11 chs. std. all other trees found down
Mkd. cedar 5" " " N. 81° 20' E. .249 " at top of upper blaze 5' up
" Fir 20" " " " S. 42° W. .163 "
" " 21" " " " N. 15° W. .430 "

C.S. # 107
Dec. 6, 1943
T.J. Storker
and R.F. Oton

1/4 Sec. Corner bet. Secs. 11 & 14 T 14-8
Set 1" pipe
Fir 12" now 48" in dia. bears N. 25° E. .48 chs. std.
Mkd. " 28" " " " S. 48° E. .446 "
" Dogwood 5" " " " S. 16° 47' E. .680 "
" " 60" " " " S. 48° W. 350 " to blaze

C.S. # 92
by W.C. Galloway
May 8, 1944
Ed. P. Rickard

Most N. N.E. Cor. of Wm. Crow Cl. 42 T 15-5
Stone at fence corner 5" x 7" x 10"
W. fir 16" in dia. bears South .079 chs. 
Set a 1" pipe South .215 chs.

C.S. # 72
by W.C.G.
July 1, 1937
Rudolph Stewart
Warren Doidge

Corner to Secs. 1, 2, 11 and 12 T. 15-5
Stone set by Geo. W. Wagoner
Mkd. Oak Forked 24" and 32" N. 81° 45' E. .922
" " 6" " " S. 2° E. 2.088

Most N. N. E. corner of William Crow Cl 42, Twp. 15-5

2893

Reestablishment by W. C. Galloway

May 8, 1944

Stone at fence corner 5" x 7" x 10"

W. Fir 16" in diam bears South

.079 chains

Set 1" pipe south

.215 chains

Witnesses Ed P. Rickard

DATE 05/10/2002TOWNSHIP 15 SOUTH, RANGE 5 WEST, WILLAMETTE MERIDIAN; SECTION 2 CORNER NONE
DONATION LAND CLAIM WILLIAM CROWE NO. 42 CORNER NORTH NORTHEAST**COMMON CORNER(S):**

NONE

RECORDS (INFORMATION IN *BOLD ITALICS* IS COUNTY STAFFS' INTERPRETATION OF THE RECORD)

BASED ON EXTENSIVE RESEARCH AND RECOVERY OF EVIDENCE, THIS OFFICE HAS DETERMINED THAT MOST GENERAL LAND OFFICE SURVEYORS MEASURED TO THE FACE OF BEARING TREES.

[01] GENERAL LAND OFFICE (GLO) NOTES OF THE WILLIAM CROWE DONATION LAND CLAIM (DLC) NO. 42 BY L. A. DAVIS, D.S., DATED MARCH 30, 1860. *SET POST WITH TWO BEARING TREES.*

[02] COUNTY SURVEY NO. 75 (OLD NO. 14) FIELD NOTES (BK. 1, PG. 72) BY F. M. WILKES, D.C.S., DATED JULY 30, 1908. *SET 16"X 9"X 6" STONE WITH TWO NEW COUNTY SURVEYOR BEARING TREES.*

[03] COUNTY SURVEY NO. 174 (OLD NO. 72) FIELD NOTES (BK. 5, PG. 49) BY W. C. GALLOWAY, D.C.S., NO DATE GIVEN. *STONE.*

[04] COUNTY SURVEY NO. 174 (OLD NO. 72) MAP BY W. C. GALLOWAY, D.C.S., NO DATE GIVEN. *STONE.*

[05] WEST SIDE HIGHWAY, (HWY 99W) MONROE-JUNCTION CITY SECTION BY OREGON STATE HIGHWAY DEPARTMENT DATED JANUARY 1919. *CORNER MONUMENT NOT DESCRIBED.*

[06] COUNTY SURVEY NO. 1069 FIELD NOTES (BK. 81, PG. 2) BY WALTER W. LARSEN, D.C.S., DATED OCTOBER 1931. *STONE.*

[07] BENTON COUNTY MAP NO. 15-5-00001 BY BENTON COUNTY, NO DATE GIVEN. *STONE 6" X 9" X 19" WITH TWO COUNTY SURVEYOR BEARING TREES (THIS DATA WAS COPIED FROM COUNTY SURVEY NO. 75).*

[08] COUNTY SURVEY NO. 1668 FIELD NOTES (BK. 88, PG 33) BY W. C. GALLOWAY, C.S., DATED MAY 8, 1944. *5"x7"x10" STONE WITH A COUNTY SURVEYOR BEARING TREE AND AN IRON PIPE FOR NEW REFERENCES.*

[09] CORNER RESTORATION BOOK NO. 1, PAGE 235 BY W. C. GALLOWAY, C.S., DATED MAY 8, 1944. *SIMILAR INFORMATION AS RECORD [08].*

SEE ALSO: CORNER RESTORATION NO. 2893, WHICH WAS TRANSCRIBED FROM RECORD [09].

[10] BENTON COUNTY MAP NO. 15-5-00002 BY W. C. GALLOWAY, C.S., DATED MAY 11, 1944. *STONE SOUTH OF POST WITH 1 COUNTY SURVEYOR BEARING TREE.*

[11] COUNTY SURVEY NO. 3928 BY FRED LEMKE, P.L.S., DATED MARCH 27, 1964. *1" PIPE.*

[12] COUNTY SURVEY NO. 4149 BY FRED LEMKE, P.L.S., DATED JULY 23, 1965. *1" PIPE.*

NOTES:

THIS IS A MICROSOFT WORD 2000 DOCUMENT NAMED "55842050" CREATED FROM A BOILER PLATE DOCUMENT NAMED "HISTORY", WHICH HAS A STYLESHEET NAMED "CORNER" ATTACHED TO IT.

FIRM/AGENCY: BENTON COUNTY SURVEYOR'S OFFICE
ADDRESS: 360 S.W. AVERY AVE. CORVALLIS OR 97333; PH. 766-6821
RESEARCH BY: DAVID M. DEAN, P.L.S.
DATA ENTRY BY: DEAN

BENTON COUNTY CORNER RESTORATION FORM, PAGE 1 OF 2, 155842050R2

SEE CORNER HISTORY FORM FOR RECORDS ETC.

CORNER RESTORATION FIELD BOOK NUMBER 20 PAGE(S) 55 DATE 05/14/2002
TOWNSHIP 15 SOUTH, RANGE 5 WEST, WILLAMETTE MERIDIAN; SECTION 2 CORNER NONE
DONATION LAND CLAIM WILLIAM CROWE NO. 42 CORNER NORTH-NORTHEAST
CONDITION REPORT _____; REFERENCED OUT _____; RENEWED XX; SURVEYED IN _____

LOCATION AND COMMENTS:

CORNER IS LOCATED AT THE SOUTHERLY EDGE OF A CULTIVATED FIELD AND APPROXIMATELY 50 FEET NORTHEASTERLY FROM THE NORTHEAST CORNER OF A GRASS FIELD. TO REACH CORNER FROM THE JUNCTION OF HIGHWAY 99W AND ORCHARD STREET IN THE TOWN OF MONROE; TRAVEL SOUTHEASTERLY ON HIGHWAY 99W FOR 2.36 MILES TO 24091, HIGHWAY 99W; THEN LEFT (NORTH) ON GRAVEL DRIVEWAY FOR APPROXIMATELY 200 FEET TO END AND PARK; THEN N15°E, ±400 FEET TO CORNER. CORNER IS POOR FOR PREMARKING AND GPS CONTROL.

MONUMENTS AND ACCESSORIES FOUND (CONDITION AND SOURCE):

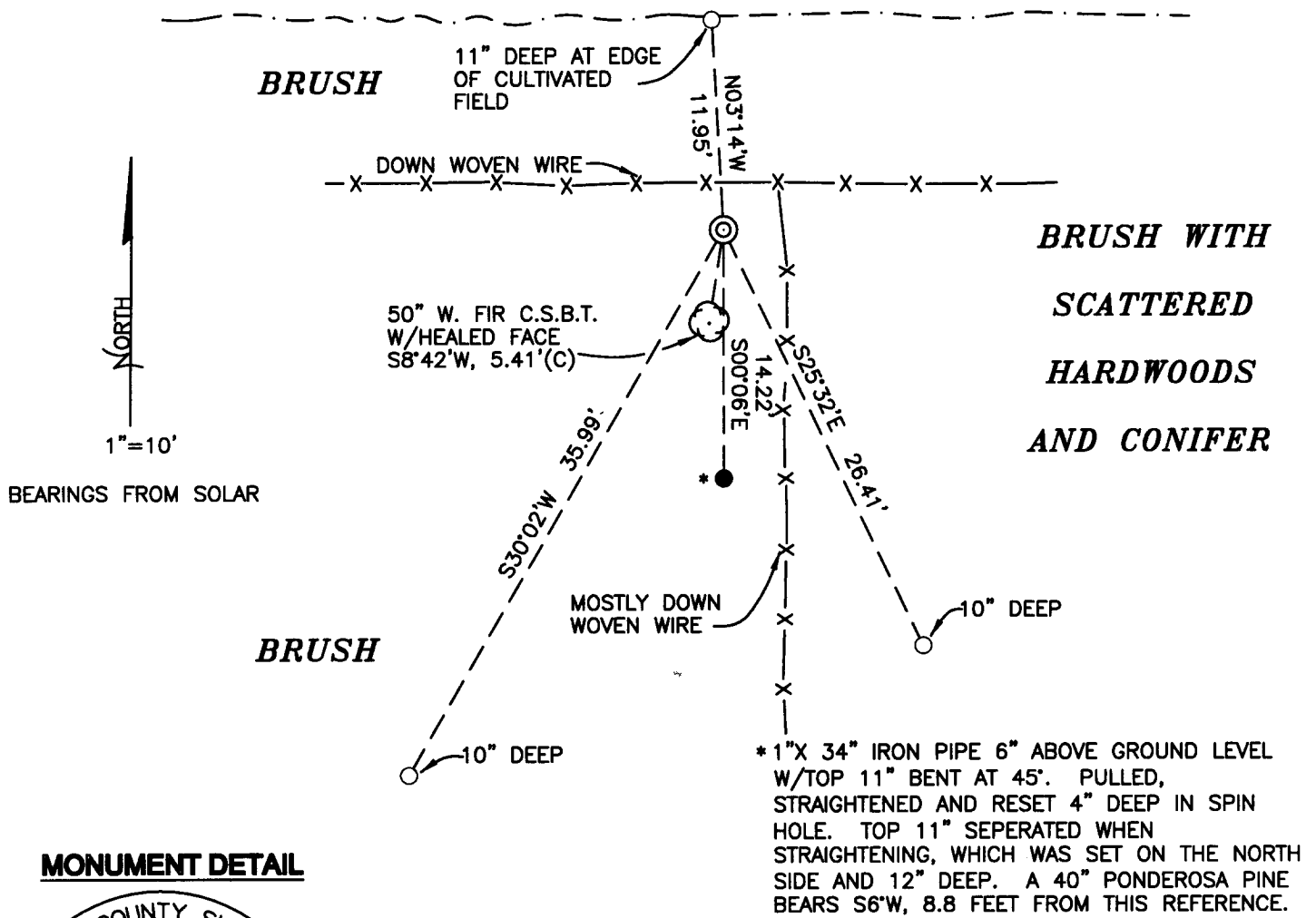
- 1) FOUND 16" X 8" X 5" SANDSTONE, 6" BELOW GROUND LEVEL WITH VISIBLE MARKS "C" REMAINING ON NORTH FACE. THE TOP 9 1/2" OF THIS STONE HAS BEEN BORKEN OFF, BUT REMAINS IN POSITION, SITTING ON BOTTOM PORTION, WHICH IS FIRMLY SET. THE STONE WAS BROKEN WHERE WE WOULD HAVE EXPECTED TO FIND THE REMAINING MARKS, I.E. "S". THE STONE HAS CHIPPED OFF IN THE AREA OF THE BREAK AND A SEARCH FOR THE ASSOCIATED PIECES WERE UNSUCCESSFUL. AN 8" DIAMETER ROTTEN OAK POST IS LYING ON THE NORTH SIDE OF STONE.
(SET 16" X 9" X 6" STONE PER RECORD [02]).
(STONE PER RECORD [03]).
(STONE BY FORMER SURVEY PER RECORD [04]).
(CORNER PER RECORD [05]).
(CLAIM CORNER STONE PER RECORD [06]).
(19" X 9" X 6" STONE PER RECORD [07]).
(10" X 7" X 5" STONE PER RECORD [08]).
(10" X 7" X 5" STONE AT FENCE CORNER PER RECORD [09]).
(STONE SOUTH OF POST PER RECORD [10]).
- 2) FOUND 50" DIAMETER GRAND FIR WITH A HEALED FACE, S8°42'W, 5.41FEET(C) (3.2 FEET TO FACE). SET ALUMINUM NAIL AND ORANGE PLASTIC WASHER IN WEST BASE FOR DISTANCE MEASUREMENT.
(16" W. FIR, SOUTH, 5.21 FEET PER RECORDS [08] - [10]).
- 3) FOUND 1" X 34" IRON PIPE, 6" ABOVE GROUND LEVEL WITH THE TOP 11" BENT AT A 45°ANGLE, S0°06'E, 14.22 FEET. PULLED STRAIGHTENED AND RESET IN SPIN HOLE, 4" BELOW GROUND LEVEL. TOP 11" BROKE OFF WHEN STRAIGHTENING, WHICH WAS SET ON THE NORTH SIDE, 12" BELOW GROUND LEVEL. A 40" PONDEROSA PINE BEARS S5°W, 8.8 FEET(C) FROM THIS REFERENCE.
(SET 1" PIPE, SOUTH, 14.19 FEET PER RECORDS [08] - [10]).
(1" PIPE PER RECORDS [11] AND [12].)

MONUMENT SET (PROCEDURES AND DESCRIPTION):

THE STONE WE RECOVERED IN ABOVE NO. 1) OF MONUMENTS AND ACCESSORIES FOUND, IS CLEARLY THAT STONE SET IN RECORD NO. [02]. IT IS UNCLER WHAT EVIDENCE OR METHOD F. M. WILKES USED TO PLACE THIS MONUMENT. IN RECORDS [02] AND [03] IT IS REFERED TO AS THE CENTER 1/4 OF SECTION 2. IN RECORDS [06] AND [09] IT IS REFERED TO AS THE NORTHEAST CORNER OF THE WILLIAM CROWE D.L.C. NO. 42, AND IN RECORD [08] IT IS CALLED BOTH THE CENTER 1/4 AND THE NORTHEAST D.L.C. CORNER, WHICH IS CONSISTENT WITH THE GLO PLAT. NO EVIDENCE REMAINS OF THE ORIGINAL GLO CORNER OR ACCESSORIES. NO EVIDENCE REMAINS OF RECORD [02] ACCESSORIES.

WE BELIEVE THE STONE RECOVERED AND DESCRIBED ABOVE IS THE BEST EVIDENCE OF THE SUBJECT DLC CORNER. WE HELD THE CENTER OF THE LOWER PORTION OF THE BROKEN STONE FOR THE TRUE CORNER POSITION. REMOVED THE STONE AND SET A 2" X 36" GALVANIZED IRON PIPE WITH A 3 1/4" BRASS DISK CEMENTED IN THE TOP, 2" BELOW GROUND LEVEL, MARKED AS SHOWN BELOW. RESET BOTH PIECES OF STONE ON THE NORTH SIDE OF NEW MONUMENT IN A HORIZONTAL POSITION AND 12" BELOW GROUND LEVEL.

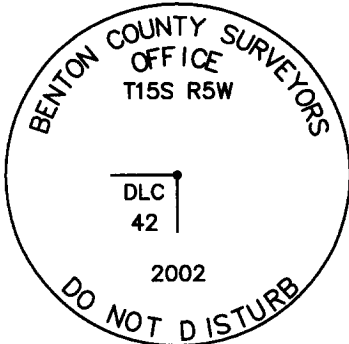
CULTIVATED FIELD



NORTH
1"=10'
BEARINGS FROM SOLAR

**BRUSH WITH
SCATTERED
HARDWOODS
AND CONIFER**

MONUMENT DETAIL



3 1/4" BRASS DISK

LEGEND

- SET 5/8" X 30" REBAR WITH YELLOW PLASTIC CAP MKD "BENTON COUNTY SURVEYOR"
- FOUND MONUMENT AS NOTED
- (C) MEASUREMENT TO CENTER
- ⊙ GOVERNMENT MONUMENT SET AS SHOWN
- ⊙ BEARING TREE AS NOTED
- C.S.B.T. COUNTY SURVEYOR BEARING TREE

NEW ACCESSORIES:

1. SET REBAR (SEE LEGEND) 11" BELOW GROUND LEVEL, N3°14'W, 11.95 FEET. THIS REFERENCE IS AT THE SOUTH EDGE OF A CULTIVATED FIELD.
2. SET REBAR (SEE LEGEND) 10" BELOW GROUND LEVEL, S25°32'E, 26.41 FEET.
3. SET REBAR (SEE LEGEND) 10" BELOW GROUND LEVEL. S30°02'W, 35.99 FEET.
4. SET 6 FOOT ORANGE CARSONITE "SURVEY MARKER" POST 1 FOOT SOUTH.

NOTES:

COMPASS DECLINATION IS 20° EAST. ALL MEASURED DISTANCES AND BEARINGS ARE TO THE CENTER OF THE OBJECT, UNLESS OTHERWISE NOTED. ALL BEARING TREES ARE PAINTED AND HAVE A B.T. TAG ATTACHED, FACING THE CORNER UNLESS OTHERWISE NOTED. ALL NEW BEARING TREES HAVE A PLASTIC WASHER (STAMPED "BENTON COUNTY SURVEYOR CORNER RESTORATION") ATTACHED (BY ALUMINUM NAIL) TO THE FACE, BELOW THE "BT" FOR DISTANCE AND ANGLE MEASUREMENT UNLESS OTHERWISE NOTED. THE DRAWING IS FROM AUTOCAD RELEASE 2002.

THIS RESTORATION WAS PERFORMED AT THE DIRECTION AND APPROVAL OF THE BENTON COUNTY SURVEYOR, _____

REGISTERED
PROFESSIONAL
LAND SURVEYOR

OREGON
JULY 13, 1984
DAVID M. DEAN
2090

RENEWAL DATE: 12/31/03

FIRM/AGENCY: BENTON COUNTY SURVEYOR'S OFFICE
ADDRESS: 360 S.W. AVERY AVE. CORVALLIS OR 97333; PH. 766-6821
SURVEYOR: DAVID M. DEAN, P.L.S.

List Points Report

05/29/2002 16:37

File> s:\survey corners\corners\t-15\55842050.crd

Job Description>

Job Number> 0.000 Job Date> 05/14/2002

PointNo.	Northing(Y)	Easting(X)	Elev(Z)	Description
1	5000.000	5000.000	100.000	START
2	5074.346	5041.521	100.307	SPIKE
3	5090.148	5054.066	97.958	STONE
4	5075.613	5054.362	98.707	1 IP
5	5084.636	5051.444	97.251	50 W FIR BT
6	5084.491	5053.519	97.251	50 W FIR BT
7	5089.838	5054.338	99.182	COR AS SET
8	5101.765	5053.664	98.669	IR
9	5058.678	5036.319	97.804	IR
10	5066.007	5065.725	98.613	IR
11	5084.541	5053.409	100.258	50 WF

Number of points listed> 11

Cor No. 155842050

REMOVING N-E WILLIAM CROWE NO. 42

TISS. RSW

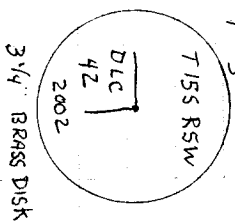
Fd 16" x 8" x 5" STONE w/TOP 10" BROKEN OFF. TOP SECTION SITTING IN PLACE ON BOTTOM SECTION. BOTTOM SECTION FIRMLY SET IN VERT. POSITION. TOP SECTION 6" ↓ w/"C" ON N FACE.

THE S WOULD HAVE BEEN AT BREAK IN STONE AND HAS FLAKED OFF. Fd 8" DIA ROTTEN OAK POST LYING ON N SIDE OF STONE.

Fd 50" W. FIR W/HEALED FACE PER REST Bk 1, Pg 235.

Fd 1" 1/4 D X 3/4 I.P. 6" ↑ w/TOP 11" BENT AT 45°. PULLED STRAIGHTENED & RESET IN SPIN HOLE 4" ↑, TOP 11" BROKE OFF WHEN STRAIGHTENING, RESET IN HORIZ POSITION ON N SIDE 12" ↓.

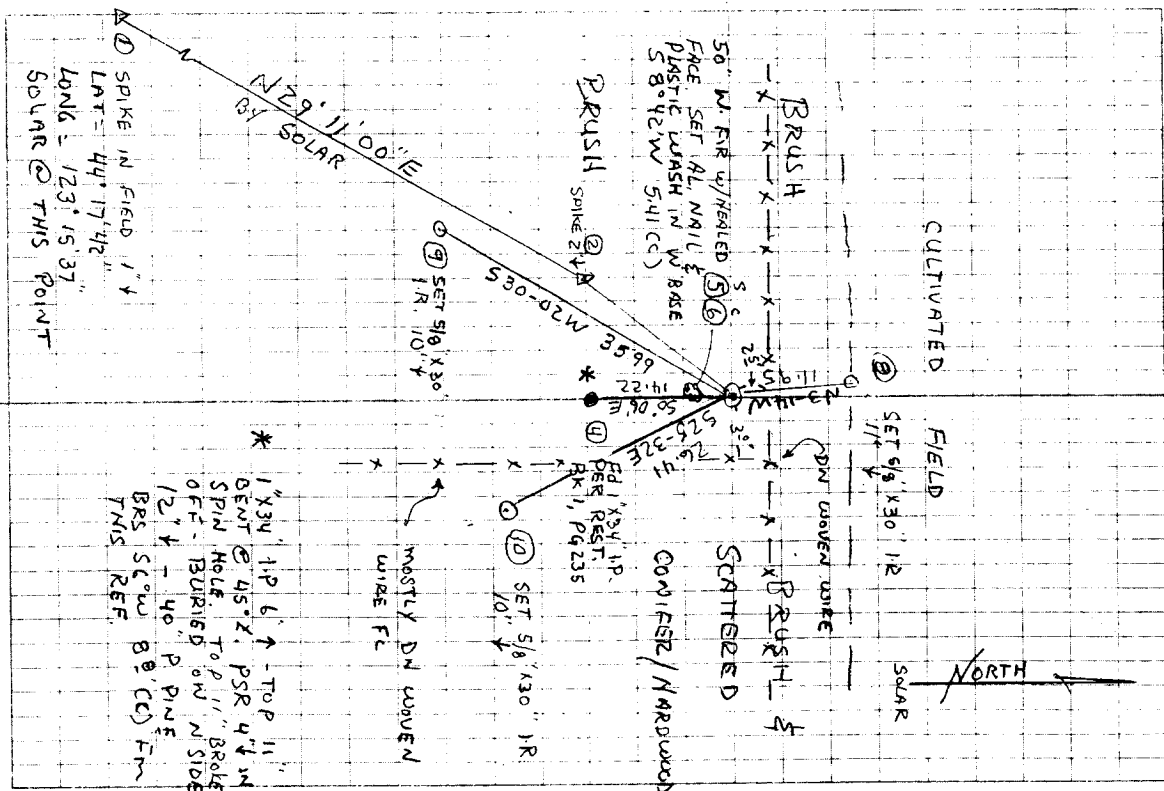
HELD CENTER OF STONE FOR TRUE COR. POSITION. SET 2" X 3/4" GIP W/3/4" BRASS DISK CEMENTED IN TOP, 2" ↑ MKD AS SHOWN BURIED STONE ON N SIDE 6" ↓. SET 6' ORANGE FIBERGLASS POST 1' S



3/4" BRASS DISK

5/14/02
D. DEAN
LEICA TOR 1105 TBS

CLEAR, MILD 20/55
62°F
29.9" Hg



① SPIKE IN FIELD 1' ↑
LAT = 44° 17' 42"
LONG = 123° 15' 37"
SOLAR @ THIS POINT

* 1" X 3/4" I.P. 6" ↑ - TOP 11" BENT @ 45°. PSR 4" ↑ IN SPIN HOLE. TOP 11" BROKE OFF. BURIED ON N SIDE 12" ↓ - 40' P. PINE BRG SC. W B (CC) FR THIS REF.

MOSTLY DN CURVEN WIDE FL

COMPIER / HARDWOOD

FIELD
SET 5/8" X 30" IR
17" ↓

NORTH