

156100640

CORNER FILE TRACKING

S:\Survey Corners\CORNERS\Templates\Filetrac2.doc
10/04/2010

| |
|----------------------|
| CORNER NUMBER |
| 156100640 |

| STEP | HISTORY | RESTORATION |
|-----------------------------|----------|-------------|
| Form Prepared, DB | 01/20/17 | 7/29/24 |
| Field Inspection, DB | 7/24/24 | 7/24/24 |
| Finish index (count unit) | 1/26/17 | 7/24/24 |
| Counter Index | 7/24/24 | 7/24/24 |
| GIS Index Form | 7/24/24 | 7/24/24 |
| Checked, DB | 7/29/24 | 7/29/24 |
| Form Edited, DB | 7/30/24 | 7/30/24 |
| Form Signed, DB | 7/30/24 | 7/30/24 |
| Authorize Payment, DB | — | — |
| Archive Digital Files | 7/30/24 | 7/30/24 |
| Collect Documents | 7/30/24 | 7/30/24 |
| PDF File | 7/30/24 | 7/30/24 |
| Copy For Filming | 7/30/24 | 7/30/24 |
| Scanned (pdf to laserfiche) | 7/30/24 | 7/30/24 |
| Filmed (Archived), DB | | |
| Filed, DB | | |

(DB) = Entry needed in database (Access).

COMMENTS:

DATE 01/26/2017TOWNSHIP 15 SOUTH, RANGE 6 WEST, WILLAMETTE MERIDIAN; SECTION 6 CORNER WEST 1/4
DONATION LAND CLAIM N/A CORNER N/A**COMMON CORNER(S):**

POINT ON EAST LINE OF SECTION 1, TOWNSHIP 15 SOUTH, RANGE 7 WEST

RECORDS (INFORMATION IN *BOLD ITALICS* IS COUNTY STAFFS' INTERPRETATION OF THE RECORD)

BASED ON EXTENSIVE RESEARCH AND RECOVERY OF EVIDENCE, THIS OFFICE HAS DETERMINED THAT MOST GENERAL LAND OFFICE SURVEYORS IN BENTON COUNTY BEFORE 1890 MEASURED TO THE FACE OF BEARING TREES.

- [01] GENERAL LAND OFFICE (GLO) NOTES BY KIMBALL WEBSTER, D.S., DATED JUNE 15, 1854. *SET POST FROM WHICH A FIR 24" DIA BEARS N76°E, 38 LINKS (25.08 FEET); A FIR 24" DIA BEARS S65°W, 34 LINKS (22.44 FEET).*
- [02] ANDREW PORTER RECORD BOOK OF SURVEYS, PAGES 1-2, SURVEY NO. 2, BY ANDREW L. PORTER, C.S., DATED JULY 20, 1888. *AS THE BEARING TREES ARE BADLY DECAYED I DESTROYED THE OLD MARKS AND MARKED NEW ONES AS FOLLOWS: FIR 24" DIA BEARS N86°E, 72 LINKS (47.52 FEET); FIR 30" DIA BEARS S86°W, 112 LINKS (73.92 FEET).*
- [03] GENERAL LAND OFFICE (GLO) NOTES BY EDWARD F. SHARP, D.S., DATED JULY 30, 1897. *A POST 12" ABOVE GROUND, 3" SQUARE, MARKED AND WITNESSED AS DESCRIBED BY THE SURVEYOR GENERAL.*
- [04] GENERAL LAND OFFICE (GLO) NOTES BY NORMAN D. PRICE, CADASTRAL ENGINEER, AND OSKAR T. DAUELSBERG, PUBLIC LAND SURVEYOR, DATED SEPTEMBER 16, 1940. *POINT DETERMINED BY REFERENCE TO THE RECORD BEARINGS AND DISTANCES FROM TWO ORIGINAL BEARING TREES. AT POINT FOR CORNER, SET AN IRON POST, 3 FEET LONG, 1" DIA, 28" IN THE GROUND, FOR 1/4 SECTION CORNER OF SECTION 6 ONLY, WITH BRASS CAP MARKED "1/4 S6 1940" FROM WHICH A FIR STUMP 34" DIA (GLO BT) BEARS N76°E, 38 LINKS (25.08 FEET), IN ADVANCED STATE OF DECAY, NO MARKS VISIBLE; A FIR SNAG 26" DIA (GLO BT) BEARS S65°W, 34 LINKS (22.44 FEET), MARKED "1/4 S6 BT", I DESTROY ALL MARKS ON THIS OLD BEARING TREE; A FIR 30" DIA BEARS N62°E, 52 LINKS (34.32 FEET), MARKED "1/4 S6 BT"; A FIR 32" DIA BEARS S77-3/4°E, 72 LINKS (47.52 FEET), MARKED "1/4 S6 BT". POINT FOR 1/4 SECTION CORNER OF SECTION 1 ONLY, TOWNSHIP 15 SOUTH, RANGE 7 WEST, BEARS NORTH, 3.34 CHAINS (220.44 FEET).*

FIRM/AGENCY: BENTON COUNTY SURVEYOR'S OFFICE
ADDRESS: 360 S.W. AVERY AVE., CORVALLIS, OR 97333; PH. 541-766-6821
RESEARCH BY: DAVID L. MALONE, P.L.S.
DATA ENTRY BY: SAME

BENTON COUNTY CORNER RESTORATION FORM, PAGE 1 OF 2, 156100640R3

SEE CORNER HISTORY FORM FOR RECORDS ETC.

CORNER RESTORATION FIELD BOOK NUMBER 35 PAGE(S) 6-7 DATE 07/24/2024
TOWNSHIP 15 SOUTH, RANGE 6 WEST, WILLAMETTE MERIDIAN; SECTION 6 CORNER WEST 1/4
DONATION LAND CLAIM N/A CORNER N/A
CONDITION REPORT ___; REFERENCED OUT ___; RENEWED X; SURVEYED IN ___

LOCATION AND COMMENTS:

CORNER IS LOCATED ON A MODERATE SOUTHEAST FACING SLOPE IN AN AREA OF ± 60 YEAR OLD D. FIR WITH SCATTERED HEMLOCKS AND HARDWOODS TO THE EAST AND ± 40 YEAR OLD D. FIR WITH SCATTERED HEMLOCKS AND HARDWOODS TO THE WEST. TO REACH CORNER FROM THE JUNCTION OF NICHOLS AND BLM SOUTH FORK ROADS, TRAVEL WESTERLY ON BLM SOUTH FORK ROAD FOR 4.50 MILES, TURN LEFT ON FOREST ACCESS ROAD (PASSING THROUGH LOCKED GATE) FOR 0.21 MILES TO A WYE, TURN LEFT FOR 1.11 MILES TO A WYE, STAY LEFT FOR 0.03 MILES TO A WYE, STAY RIGHT FOR 0.02 MILES TO A WYE, STAY RIGHT FOR 0.31 MILES TO A WYE, STAY RIGHT FOR 0.48 MILES TO THE END OF THE ROAD. PARK AND WALK ABOUT 230 FEET SOUTHEAST TO THE CORNER. CORNER IS BAD FOR GPS CONTROL.

MONUMENTS AND ACCESSORIES FOUND (CONDITION AND SOURCE):

1. FOUND D. FIR STUMP 30" DIA WITH AXE MARKS IN BARK BELOW ROTTEN FACE BEARS N61°49'E, 34.32 FEET TO CENTER. (FIR 30" DIA BEARS N62°E, 52 LINKS [34.32 FEET], MARKED "1/4 S6 BT" AS PER RECORD [04]).
2. FOUND D. FIR STUMP 36" DIA WITH AXE MARKS IN BARK BELOW ROTTEN FACE BEARS S78°48'E, 47.52 FEET TO CENTER. (FIR 32" DIA BEARS S77-3/4°E, 72 LINKS [47.52 FEET], MARKED "1/4 S6 BT" AS PER RECORD [04]).
3. SET 2" GALVANIZED IRON PIPE WITH 3-1/4" BRASS DISK CEMENTED IN THE TOP AT THE EAST 1/4 CORNER OF SECTION 1, TOWNSHIP 15 SOUTH, RANGE 7 WEST, AS PER CORNER RESTORATION 157700640R2, BEARS N0°00'00"W, 220.65 FEET. **HELD FOR BASIS OF BEARINGS FOR THIS RESTORATION.**
(POINT FOR 1/4 SECTION CORNER OF SECTION 1 ONLY, TOWNSHIP 15 SOUTH, RANGE 7 WEST, BEARS NORTH, 3.34 CHAINS [220.44 FEET] AS PER RECORD [04]).

MONUMENT SET (PROCEDURES AND DESCRIPTION):

I CALCULATED THE CORNER POSITION BY DISTANCE-DISTANCE INTERSECTION FROM TWO FOUND GENERAL LAND OFFICE BEARING TREES THAT WERE MARKED IN 1940 BY NORMAN D. PRICE, CADASTRAL ENGINEER, AND OSKAR T. DAUELSBERG, PUBLIC LAND SURVEYOR. PRICE AND DAUELSBERG FOUND THE REMAINS OF THE ORIGINAL 1854 BEARING TREES AND SET AN IRON PIPE WITH BRASS CAP AT THE POSITION DETERMINED BY REFERENCE TO THOSE BEARING TREES. THE IRON PIPE AND BRASS CAP WERE GONE AND NO EVIDENCE WAS FOUND OTHER THAN THE 1940 BEARING TREES STUMPS. THE CALCULATED POSITION IS ACCEPTED AS THE PERPETUATION OF THE ORIGINAL CORNER POSITION.

AT THE CALCULATED POSITION SET A 2" X 31-1/2" GALVANIZED IRON PIPE WITH A 3-1/4" BRASS DISK CEMENTED IN THE TOP, STAMPED AS SHOWN ON PAGE 2 OF 2, UP 4" ABOVE GROUND SURFACE. SET 6 FOOT ORANGE CARSONITE "SURVEY MARKER" POST 1 FOOT SOUTH OF BRASS DISK. SET TWO NEW IRON ROD ACCESSORIES AND BLAZED AND SCRIBED TWO NEW BEARING TREES AS SHOWN ON PAGE 2 OF 2.

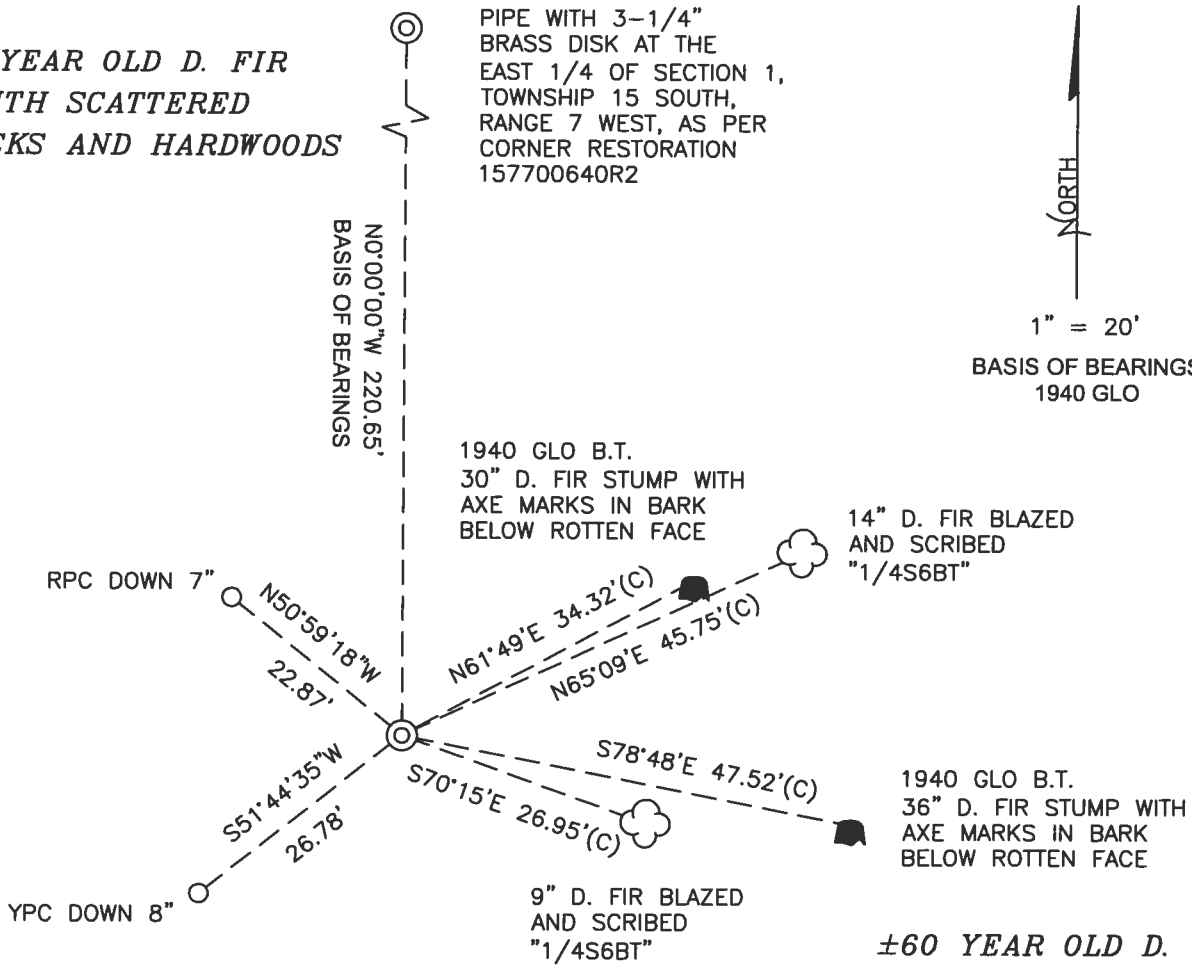
*±40 YEAR OLD D. FIR
WITH SCATTERED
HEMLOCKS AND HARDWOODS*

SET 2" GALVANIZED IRON PIPE WITH 3-1/4" BRASS DISK AT THE EAST 1/4 OF SECTION 1, TOWNSHIP 15 SOUTH, RANGE 7 WEST, AS PER CORNER RESTORATION 157700640R2



1" = 20'

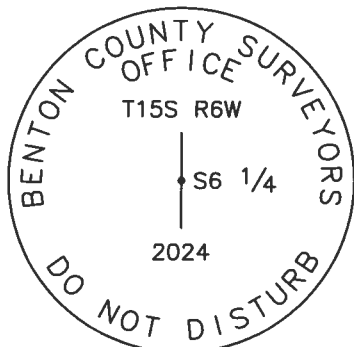
BASIS OF BEARINGS
1940 GLO



*±60 YEAR OLD D. FIR
WITH SCATTERED
HEMLOCKS AND HARDWOODS*

MONUMENT DETAIL

LEGEND



3-1/4" BRASS DISK

- SET 5/8" X 30" REBAR WITH PLASTIC CAP
- YPC YELLOW PLASTIC CAP MARKED "BENTON COUNTY SURVEYOR"
- RPC RED PLASTIC CAP MARKED "BENTON COUNTY SURVEYOR"
- (C) MEASUREMENT TO CENTER
- ⊙ GOVERNMENT MONUMENT SET AS SHOWN
- GLO GENERAL LAND OFFICE
- B.T. BEARING TREE
- BEARING TREE STUMP AS NOTED
- ☁ BEARING TREE AS NOTED

NEW ACCESSORIES:

1. SET REBAR (SEE LEGEND) N50°59'18"W, 22.87 FEET AND 7 INCHES BELOW GROUND LEVEL.
2. SET REBAR (SEE LEGEND) S51°44'35"W, 26.78 FEET AND 8 INCHES BELOW GROUND LEVEL.
3. D. FIR 9" DIA BEARS S70°15'E, 26.95 FEET TO CENTER, FACE SCRIBED "1/4S6BT". SET ALUMINUM NAIL AND PLASTIC WASHER IN SOUTHWESTERLY BASE FOR DISTANCE MEASUREMENT.
4. D. FIR 14" DIA BEARS N65°09'E, 45.75 FEET TO CENTER, FACE SCRIBED "1/4S6BT". SET ALUMINUM NAIL AND PLASTIC WASHER IN SOUTHEASTERLY BASE FOR DISTANCE MEASUREMENT.

NOTES:

COMPASS DECLINATION IS 15' EAST. ALL MEASURED DISTANCES AND BEARINGS ARE TO THE CENTER OF THE OBJECT, UNLESS OTHERWISE NOTED. ALL LIVE BEARING TREES ARE PAINTED AND HAVE A B.T. TAG ATTACHED, FACING THE CORNER UNLESS OTHERWISE NOTED. ALL NEW BEARING TREES HAVE A PLASTIC WASHER (STAMPED "SURVEY MARKER DO NOT REMOVE") ATTACHED BY AN ALUMINUM NAIL TO THE SIDE CENTER OF THE TREE FOR DISTANCE MEASUREMENT, UNLESS OTHERWISE NOTED.

THIS RESTORATION WAS PERFORMED AT THE DIRECTION AND APPROVAL OF THE BENTON COUNTY SURVEYOR *JM*

REGISTERED
PROFESSIONAL
LAND SURVEYOR

FIRM/AGENCY: BENTON COUNTY SURVEYOR'S OFFICE
ADDRESS: 360 S.W. AVERY AVE., CORVALLIS, OR 97333; PH. 541-766-6821
PRESENT: DAVID L. MALONE, P.L.S., AND IAN T. MCGUIRE, P.L.S.
EQUIPMENT: NIKON NIVO3.C WITH SURVEY PRO ONBOARD.

7/30/24 *DLM*

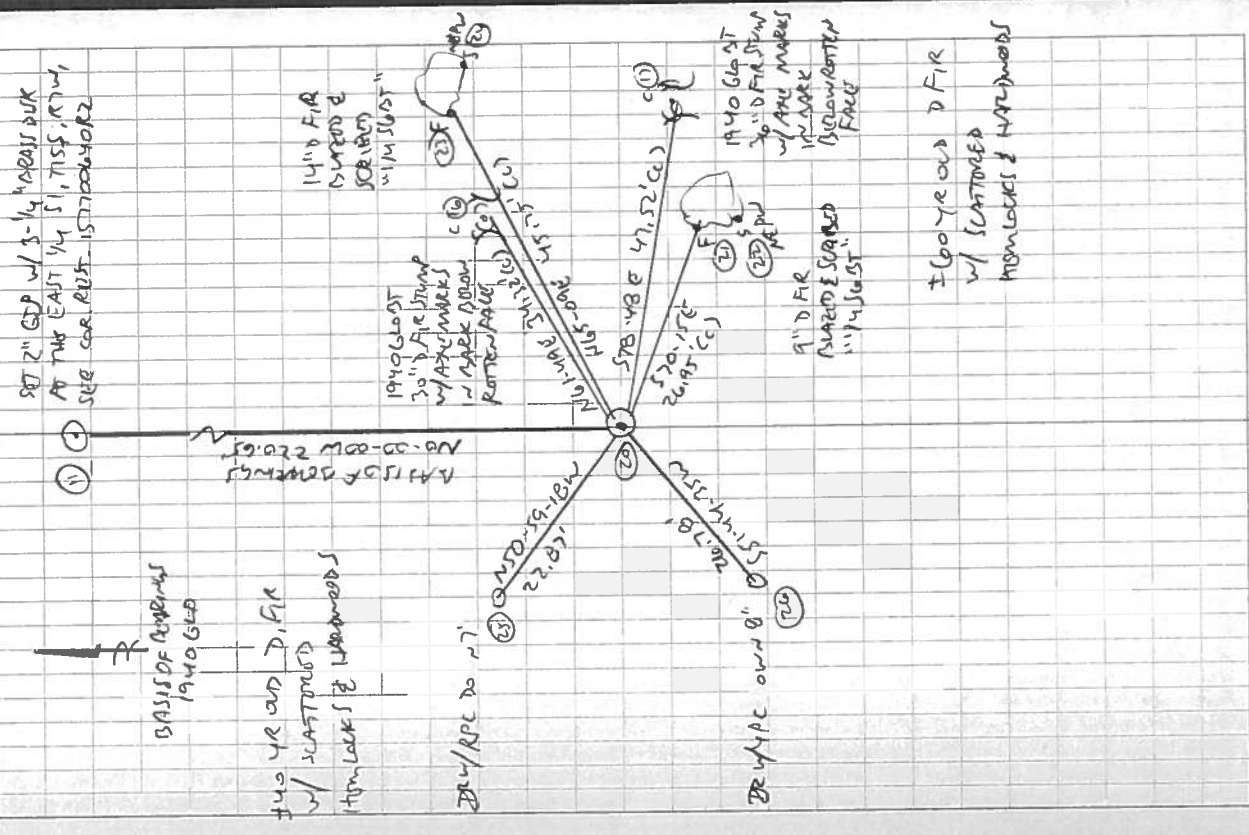
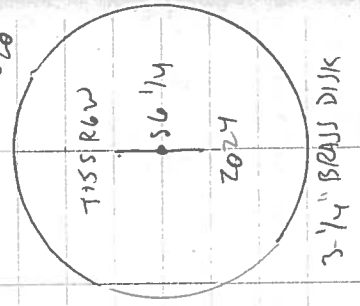
OREGON
JANUARY 12, 1999
DAVID L. MALONE
51523

RENEWAL DATE: 12/31/24

156100640
 REMAINMENT TISS ROW d w 1/4 56
 7/24/24 & 7/24/24
 I. MCGUIRE

FD 2 1940 GLASS STUMPS, HOLD DIST-DIST
 INTERSECTION FROM THE CENTER OF THE STUMPS
 FOR THE CORNER POSITION. FD NO OTHER LANDS
 AT CORNER POSITION SET 2" x 3 1/2" GIP w/ 3/4"
 BRASS DISK CEMENTED IN THE TOP, UP 4" ABOVE
 GROUND SURFACE. SET MONUMENT AT VARIOUS
 POSITIONS OF 15700640 AND HOLD FOR
 BASIS OF SURVEYS FOR 1940 GLO. SET TWO NEW
 IRON ROD ACCESSORIES AND SURVEY SCREWS
 TWO NEW SURVEY NAILS. SET 6' ORANGE
 CARBONITE "SURVEY MARKER" POST 1' SOUTH.

DR = 5/8" x 30" DEAN ROD
 YPC OR RPC = YELLOW OR RED
 PLASTIC CAP MARKED
 "SECTION COUNTY SURVEYOR"
 NEW = NAIL AND PLASTIC WASHING
 MARKED "SURVEY MARKER
 DO NOT REMOVE"



REC'D IN THE HAND