

156200640

CORNER FILE TRACKING

H:\Survey\Corners\Misc\Filetrac2.doc
06/15/2003

CORNER NUMBER
156200640

STEP	HISTORY	RESTORATION
Form Prepared, DB	1/19/10	1/29/10
Field Inspection, DB	1/27/10	1/27/10
Finish index (count unit)	1/27/10	1/27/10
Counter Index	1/29/10	1/29/10
GIS Index Form	1/29/10	1/29/10
Checked, DB	2/1/10	2/1/10
Form Edited, DB	2/3/10	2/3/10
Form Signed, DB	2/3/10	2/3/10
Authorize Payment, DB	~	~
Archive Digital Files	2/3/10	2/3/10
Collect Documents	N/A	N/A
PDH File	2/3/10	2/3/10
Copy For Filming	2/3/10	2/3/10
Scanned		
Filmed (Archived), DB		
Filed, DB		

(DB) = Entry needed in database (Access).

COMMENTS:

DATE 01/19/2010

TOWNSHIP 15 SOUTH, RANGE 06 WEST, WILLAMETTE MERIDIAN; SECTION 05 CORNER WEST 1/4
DONATION LAND CLAIM N/A CORNER N/A

COMMON CORNER(S):
EAST 1/4 OF SECTION 6

RECORDS (INFORMATION IN BOLD ITALICS IS COUNTY STAFFS' INTERPRETATION OF THE RECORD)

BASED ON EXTENSIVE RESEARCH AND RECOVERY OF EVIDENCE, THIS OFFICE HAS DETERMINED THAT MOST GENERAL LAND OFFICE SURVEYORS MEASURED TO THE FACE OF BEARING TREES.

[01] GENERAL LAND OFFICE (GLO) NOTES BY G. MERCER, D.S., DATED JUNE 30, 1883. SET A POST 3" SQUARE X 3' LONG, WITH A MARKED STONE, 12" IN THE GROUND. POST IS MARKED "1/4S" ON THE WEST SIDE. MARKED A 4" FIR S88 °E, 2 LKS. (1.32 FT.), MARKED "1/4SBT" AND AN 8" FIR N88 °W 1 LK. (0.66 FT.), MARKED "1/4SBT".

[02] RECORD BOOK OF SURVEYS, PAGE 1 BY ANDREW PORTER, C.S., DATED JULY 20, 1888. CORNER TIED, BUT NOT DESCRIBED.

[03] COUNTY SURVEY NO. 4440 BY LEO MARTIN, P.L.S, DATED JULY 1967. FOUND BOTH GLO BT'S BLOWN OVER, SCRIBING VISIBLE ON CHOPPED OPEN FACE ON NW BT, HEALED FACE ON SE BT. DROVE NAIL IN WIND FALL FOR CORNER POINT, COULD NOT GET PIPE IN GROUND. MARKED A 7" FIR N79 °E, 49.0 FT. AND AN 18" FIR S82 °W, 71.6 FT.

[04] COUNTY SURVEY NO. 8569. THIS SURVEY IS AN EXACT COPY OF RECORD [03] AND WAS FILED IN 1991.

NOTES:

THIS IS A MICROSOFT WORD 2003 DOCUMENT NAMED "56200640" CREATED FROM A BOILER PLATE DOCUMENT NAMED "HISTORY", WHICH HAS A STYLESHEET NAMED "CORNER" ATTACHED TO IT.

FIRM/AGENCY: BENTON COUNTY SURVEYOR'S OFFICE
ADDRESS: 360 S.W. AVERY AVE. CORVALLIS OR 97333; PH. 766-6821
RESEARCH BY: BERNARD S. ALTENBACH, ENGINEER/SURVEY TECH.
DATA ENTRY BY: SAME

**BENTON COUNTY CORNER RESTORATION FORM, PAGE 1 OF 2, 156200640R1
SEE CORNER HISTORY FORM FOR RECORDS ETC.**

CORNER RESTORATION FIELD BOOK NUMBER 28 PAGE(S) 26 DATE 01/27/2010
TOWNSHIP 15 SOUTH, RANGE 6 WEST, WILLAMETTE MERIDIAN; SECTION 05 CORNER WEST 1/4
DONATION LAND CLAIM NONE CORNER NONE
CONDITION REPORT ; REFERENCED OUT ; RENEWED XX; SURVEYED IN

LOCATION AND COMMENTS:

CORNER IS LOCATED ON A RIDGE TOP BEARING N60°W IN A STAND OF D. FIR TIMBER OF MIXED AGES (40 TO 80 YEARS). TO REACH CORNER FROM THE JUNCTION SOUTH FORK AND NICHOLS ROADS, TRAVEL WESTERLY ON SOUTH FORK ROAD FOR 4.50 MILES; THEN LEFT ON GRAVEL ROAD, PASSING THROUGH A LOCKED BLM GATE FOR 0.57 MILES AND PARK; THEN WALK APPROXIMATELY N85°E FOR ±10 CHAINS TO CORNER. CORNER IS POOR FOR PREMARKING AND GPS CONTROL.

MONUMENTS AND ACCESSORIES FOUND (CONDITION AND SOURCE):

1. FOUND 20" X 7' D. FIR SAWED STUMP GLO BEARING TREE. WE OPENED STUMP TO VISIBLE SCRIBING "1/4S BT". IN PROCESS OF SEARCHING FOR ORIGINAL MARKS WE CUT THIS STUMP DOWN TO APPROXIMATELY 4 FEET HIGH. STUMP IS THE WESTERLY TRUNK OF A DOUBLE D. FIR, THE OTHER TRUNK BEING FOUND AS A 22" X 7' D. FIR, WHICH IS THE EASTERLY GLO BEARING TREE AS NOTED IN NUMBER 2 BELOW. THE STUMPS OF THIS DOUBLE D. FIR HAS BEEN PARTIALLY UPROOTED AND TIPPED APPROXIMATELY 15 TO 20 DEGREES TO THE EAST. OUR CALCULATED CORNER NOW FALLS WITHIN THE WESTERLY TRUNK OF SAID DOUBLE D. FIR.
(FIR, 8" DIAMETER BEARS N88°W, 0.66 FEET, MARKED "1/4S BT" PER RECORD [01]).
(BOTH ORIGINAL BT'S BLOWN OVER, SCRIBING VISIBLE ON CHOPPED OPEN FACE ON NW BT, DROVE NAIL IN WIND FALL FOR CORNER POINT PER RECORD [03]).
2. FOUND 22" X 7' D. FIR SAWED STUMP GLO BEARING TREE. WE OPENED STUMP TO VISIBLE SCRIBING "1/4S". IN PROCESS OF SEARCHING FOR ORIGINAL MARKS WE CUT THIS STUMP DOWN TO APPROXIMATELY 3 FEET HIGH. STUMP IS THE EASTERLY TRUNK OF A DOUBLE D. FIR, THE OTHER TRUNK BEING FOUND AS A 20" X 7' D. FIR, WHICH IS THE WESTERLY GLO BEARING TREE AS NOTED IN NUMBER 1 ABOVE. THE STUMPS OF THIS DOUBLE D. FIR HAS BEEN PARTIALLY UPROOTED AND TIPPED APPROXIMATELY 15 TO 20 DEGREES TO THE EAST. OUR CALCULATED CORNER NOW FALLS WITHIN THE WESTERLY TRUNK OF SAID DOUBLE D. FIR.
(FIR 4" DIAMETER BEARS S88°E, 1.32 FEET MARKED "1/4SBT" PER RECORD [01]).
(BOTH ORIGINAL BT'S BLOWN OVER, SCRIBING VISIBLE ON CHOPPED OPEN FACE ON NW BT, DROVE NAIL IN WIND FALL FOR CORNER POINT PER RECORD [03]).
3. FOUND 18" D. FIR WITH HEALED FACE, N80°10'E, 49.81 FEET TO CENTER. SET ALUMINUM NAIL AND PLASTIC WASHER IN SOUTHERLY BASE FOR DISTANCE MEASUREMENT.
(SCRIBED 7" FIR, N79°E, 49.0 FEET PER RECORD [03]).
4. FOUND 25" D. FIR WITH HEALED FACE, S84°45'W, 70.29 FEET TO CENTER. SET ALUMINUM NAIL AND PLASTIC WASHER IN SOUTHERLY BASE FOR DISTANCE MEASUREMENT.
(SCRIBED 18" FIR, S82°W, 71.6 FEET PER RECORD [03]).

MONUMENT SET (PROCEDURES AND DESCRIPTION):

NO MONUMENT WAS SET AT THE CORNER POSITION, AS THE WESTERLY GLO BEARING TREE STUMP NOW OCCUPIES OUR CALCULATED POSITION OF THE SUBJECT CORNER. TO CALCULATE THE POSITION OF THIS 1/4 CORNER, WE HELD A PLUMB LINE FROM THE CENTER OF THE SECTION 6 GLO BEARING TREE ROOT CROWN; THEN CALCULATED A POSITION BEARING S88°E 0.99 FEET (4" FROM CENTER OF ORIGINAL 8" D. FIR PLUS 1 LINK PER RECORD [01]) FROM SAID CENTER OF ROOT CROWN. THE CALCULATED POSITON OF CORNER FALLS IN THE STUMP OF THE NOW PARTIALLY UPROOTED AND TIPPED SECTION 6 GLO BEARING TREE AND NO MONUMENT COULD BE SET. WE SEARCHED FOR THE "NAIL IN WIND FALL" PER RECORD [03] WITHOUT SUCCESS. WE ALSO SEARCHED FOR THE "MARKED STONE" MEMORIAL PER RECORD [01] WITHOUT SUCCESS. THE CORNER POSITION (NAIL) PER RECORD [03] APPEARS TO BE IN ERROR, AS NO SCRIBING COULD HAVE BEEN "VISIBLE ON CHOPPED OPEN FACE ON NW BT". THERE WAS A CHOPPED OPEN HOLE ON THE NORTHERLY SIDE OF THE NORTHWEST (SECTION 6) GLO BEARING TREE, BUT NO SCRIBING WAS VISIBLE. NO SCRIBING BECAME VISIBLE UNITL BOTH GLO BEARING TREES WERE OPENED ON JANUARY 27, 2010.

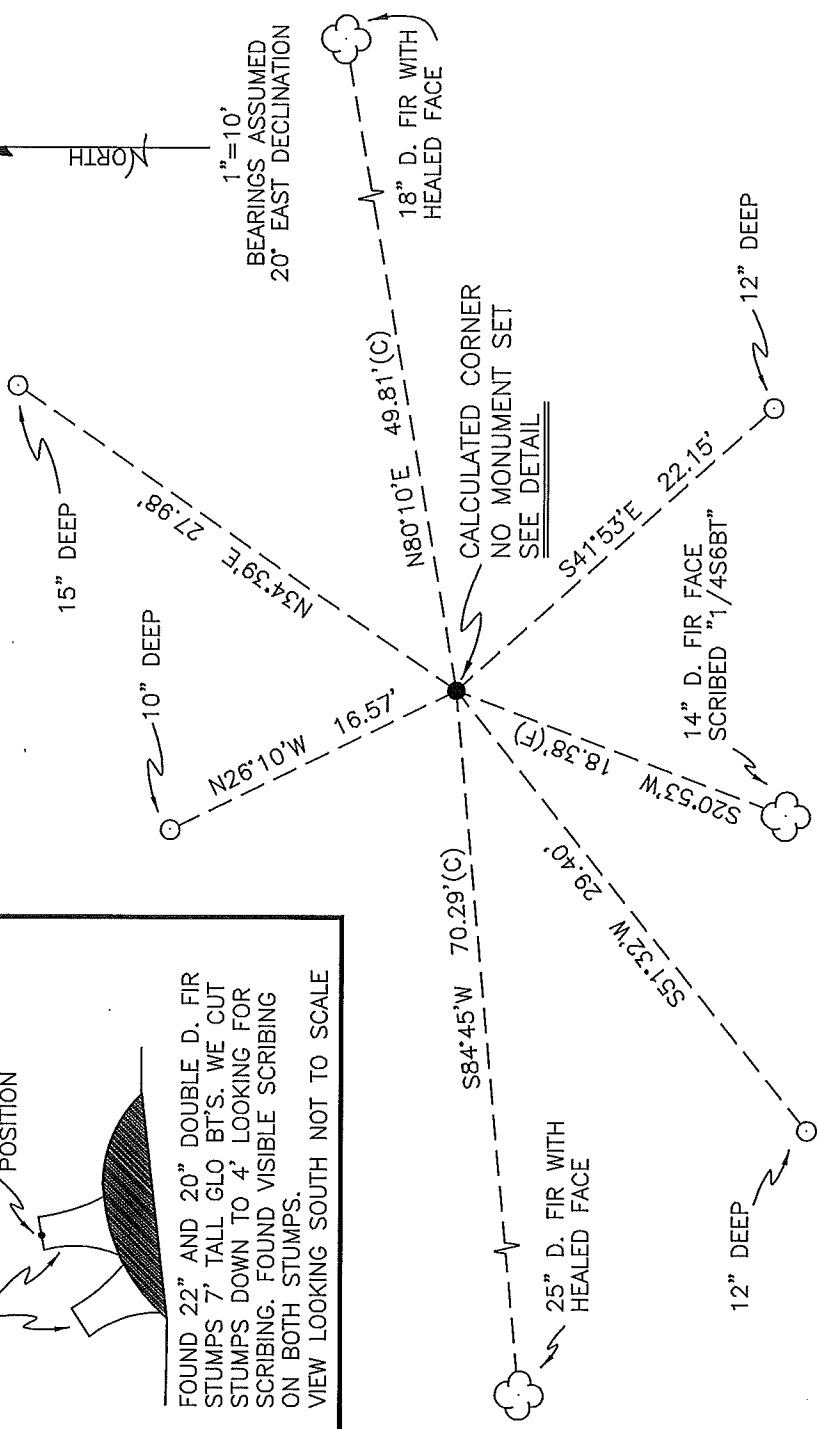
WE REFERENCED OUR CALCULATED CORNER POSITION WITH FOUR IRON RODS, ONE NEW BEARING TREE AND THE TWO BEARING TREES PER RECORD [03] AS SHOWN ON PAGE 2 OF 2. SET A 6 FOOT ORANGE CARBONITE "SURVEY MARKER" POST 0.5 FEET NORTHWEST OF THE NORTHWEST IRON ROD REFERENCE.

MIXED STAND 40 TO 80 YEAR OLD D. FIR

DETAIL

GLO BT STUMPS
CALCULATED CORNER POSITION

FOUND 22" AND 20" DOUBLE D. FIR STUMPS 7' TALL GLO BT'S. WE CUT STUMPS DOWN TO 4' LOOKING FOR SCRIBING. FOUND VISIBLE SCRIBING ON BOTH STUMPS.
VIEW LOOKING SOUTH NOT TO SCALE



MIXED STAND 40 TO 80 YEAR OLD D. FIR

LEGEND

- SET 5/8" X 30" REBAR WITH YELLOW PLASTIC CAP MARKED "BENTON COUNTY SURVEYOR"
- CALCULATED CORNER POSITION
- (F) MEASUREMENT TO FACE
- (C) MEASUREMENT TO CENTER
- ◎ GOVERNMENT MONUMENT SET AS SHOWN
- ☼ BEARING TREE AS NOTED
- GLO GENERAL LAND OFFICE
- ⌒ GLO BEARING TREE STUMP AS NOTED

MONUMENT DETAIL

NO MONUMENT SET

NEW ACCESSORIES:

1. SET REBAR (SEE LEGEND) 15" BELOW GROUND LEVEL N34°39'E, 27.98 FEET.
2. SET REBAR (SEE LEGEND) 12" BELOW GROUND LEVEL S41°53'E, 22.15 FEET.
3. SET REBAR (SEE LEGEND) 12" BELOW GROUND LEVEL S51°32'W, 29.40 FEET.
4. SET REBAR (SEE LEGEND) 10" BELOW GROUND LEVEL N26°10'W, 16.57 FEET.
5. 14" D. FIR FACE SCRIBED "1/4S6BT" S20°53'W, 18.38 FEET TO FACE. SET ALUMINUM NAIL AND PLASTIC WASHER BELOW SCRIBING FOR DISTANCE AND ANGLE MEASUREMENT.

NOTES:

COMPASS DECLINATION IS 20° EAST. ALL MEASURED DISTANCES AND BEARINGS ARE TO THE CENTER OF THE OBJECT, UNLESS OTHERWISE NOTED. ALL BEARING TREES ARE PAINTED AND HAVE A B.I. TAG ATTACHED, FACING THE CORNER UNLESS OTHERWISE NOTED. ALL NEW BEARING TREES HAVE A PLASTIC WASHER (STAMPED "SURVEYOR MARKER DO NOT REMOVE") ATTACHED BY AN ALUMINUM NAIL TO THE FACE, BELOW THE "BT" FOR DISTANCE AND ANGLE MEASUREMENT UNLESS OTHERWISE NOTED. THE DRAWING IS FROM AUTOCAD RELEASE 2008.

THIS RESTORATION WAS PERFORMED AT THE DIRECTION AND APPROVAL OF THE BENTON COUNTY SURVEYOR *David M. Dean*

FIRM/AGENCY: BENTON COUNTY SURVEYOR'S OFFICE
 ADDRESS: 360 S.W. AVERY AVE. CORVALLIS, OR. 97333; PH. 766-6821
 PRESENT: DAVID M. DEAN, P.L.S., DAVE MALONE, P.L.S. AND
 BERNIE ALTENBACH, SURVEY TECH.
 EQUIPMENT: LEICA TCR 1105 WITH TDS ON BOARD

REGISTERED
 PROFESSIONAL
 LAND SURVEYOR

David M. Dean
 2/3/16
 OREGON
 JULY 13, 1984
 DAVID M. DEAN
 2090

RENEWAL DATE: 12/31/11

156200648

REFERENCING ORIG. GLO COR POSITION

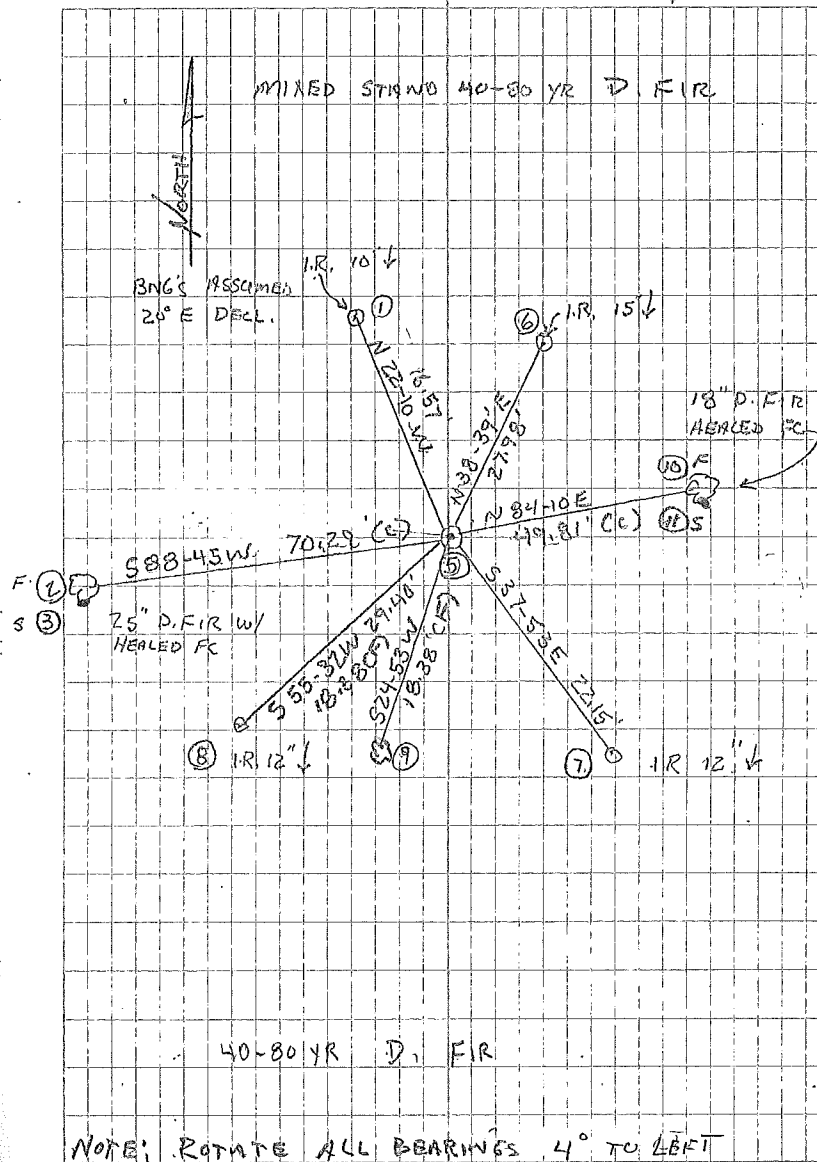
14 615 TISS R6W

Fd 22" AN 20" DOUBLE D. FIR STUMPS, BOTH
SAWED AT 7' HIGH. TOTAL Root WAD IS
TIPPED $\approx 15^\circ$ E'LY. BOTH STEMS ARE
ORIG. 1883 MERCER BT'S. WE OPENED
BOTH STEMS TO VISIBLE SCRIBING.

W'LY STEM OPENED TO "1/4 SBT". E'LY
STEM OPENED TO "1/4 S". COR POSITION
FALLS IN ROOT CROWN - NO MONUMENT
SET. POSITION OF COR. ESTABLISHED
BY ESTIMATING STEMS IN VERTICAL
POSITION. NO EVIDENCE OF MERCER
STONE OR MARKING NAIL COULD BE FOUND.
SET 6' ORANGE CARBONITE "SURVEY
MARKER" POST 0.5' NW OF NW IRON ROD

CLDY, COOL
40°F 29.5" Hg
LEICA TOR 1105/TDS

1127110 2/8/26
D. DEAN
B. ALTENBACH
D. MALONE



(4) CALC. FACE, SEC 6 BT