

**156500540**

## CORNER FILE TRACKING

<b>CORNER NUMBER</b>
156500540

STEP	HISTORY	RESTORATION
Form Prepared, DB	10/20/94	11/12/2008
Field Inspection, DB		11/12/08
Finish index (count unit)	10/20/94	4/12/08
Counter Index	7/3/19	7/3/19
GIS Index Form	7/3/19	7/3/19
Checked, DB	10/20/94	11/12/08
Form Edited, DB	10/20/94	11/12/08
Form Signed, DB	—	4/12/08
Authorize Payment, DB	—	—
Archive Digital Files	7/03/19	7/3/19
Collect Documents	7/3/19	7/3/19
PDF File	7/3/19	7/3/19
Copy For Filming	7/3/19	7/3/19
Scanned (pdf to laserfiche)	7/3/19	7/3/19
Filmed (Archived), DB		
Filed, DB		

(DB) = Entry needed in database (Access).

### COMMENTS:

**TOWNSHIP 15 SOUTH, RANGE 6 WEST, WILLAMETTE MERIDIAN; SECTION 10 CORNER E 1/4**  
**DONATION LAND CLAIM \_\_\_\_\_ CORNER \_\_\_\_\_****COMMON CORNER(S):**

THE WEST QUARTER CORNER OF SECTION 11, IN TOWNSHIP 15 SOUTH RANGE 6 WEST.

**UPDATES AND REVISIONS:****CORNER RECORDS (PREVIOUS RENEWALS, SURVEYS, ETC.)**

- [01] ORIGINAL GLO SURVEY BY KIMBALL WEBESTER DATED AUGUST 20, 1854.
- [02] COUNTY SURVEY NO. 1552 BY W.C. GALLOWAY DATED DECEMBER 15, 1941 (FIELD BOOK NO. 81, PAGE 21).
- [03] OLD CORNER RESTORATION BOOK NO. 1, PAGE 236 BY W.C. GALLOWAY DATED DECEMBER 15, 1941.
- [04] CORNER RESTORATION NO. 2924 BY W.C. GALLOWAY DATED DECEMBER 15, 1941.
- [05] MAP NO. 15-6-00001 BY W.C. GALLOWAY DATED DECEMBER 27, 1941.(FIELD BOOK NO. 81 PAGE 15).
- [06] MAP NO. 15-6-00004 BY W.C. GALLOWAY DATED JULY 14, 1942. (FIELD BOOK NO. 104 PAGE 1).
- [07] CORNER RE-ESTAB NO. 8249 BY LANE COUNTY SURVEYOR'S OFFICE DATED 1980.
- [08] LANE COUNTY INDEX NO. 12191 BY KENNETH ROBERT EZELL DATED NOVEMBER 5, 1992.

**COMMENTS/LOCATION/ETC:**

THIS CORNER IS LOCATED ON THE LINE BETWEEN BENTON AND LANE COUNTIES.  
RECORD [04] IS A TRANSCRIBED COPY OF RECORD [03] AND MAY CONTAIN ERRORS AND OMISSIONS.  
LANE COUNTY RE-ESTAB NO. 8249 WAS IN ERROR AND THE MONUMENT WAS STAMPED "AM" ON NOVEMBER 5, 1992, AND LOWERED 12" BELOW GROUND SURFACE. A NEW MONUMENT WAS SET AND BEARING OBJECTS ESTABLISHED AS PER LANE COUNTY INDEX NO. 12191.  
BENTON COUNTY IS NOT PREPARED TO ACCEPT OR REJECT THE LANE COUNTY BRASS CAP AS THE QUARTER CORNER, EXCEPTING FOR G.I.S. MAPPING PURPOSES.  
FOR SOLAR AZIMUTH SEE BENTON COUNTY CORNER RESTORATION FIELD BOOK NO. 15, PAGES 44, 65.  
FOR G.P.S. INFORMATION SEE COUNTY CONTROL REPORT NO. 8 , STATION 94-10-18.

**NOTES:**

THIS IS A MICROSOFT WORD (VERSION 5.0) DOCUMENT NAMED "56500540" CREATED FROM A BOILER PLATE DOCUMENT NAMED "HISTORY", WHICH HAS A STYLESHEET NAMED "CORNER" ATTACHED TO IT.

**FIRM/AGENCY:** BENTON COUNTY SURVEYOR'S OFFICE  
**ADDRESS:** 360 S.W. AVERY AVE. CORVALLIS OR 97333; PH. 757-6821  
**RESEARCH BY:** CURTIS J. LIESENFELT/MARK E. ANDERSON  
**DATA ENTRY BY:** MARK E. ANDERSON

LANE COUNTY SURVEYORS OFFICE  
DEPARTMENT OF PUBLIC WORKS

FILE NO: 15-06-10 E1/4  
TRGCDB: 1506500540  
INDEX NO: 15150

## CORNER REPORT

THE QUARTER SECTION CORNER COMMON TO SECTIONS 10 AND 11, T15S, R6W, WILLAMETTE MERIDIAN

FOR COMPLETE HISTORY SEE LCSO RE 12191

### CORNER EVIDENCE

**EVIDENCE RECOVERED:** AT THE CORNER POSITION FOUND A 2-3/8" BRASS CAP ATOP A 1-1/2" IRON PIPE, FIRM AND FLUSH. ALSO FOUND A METAL FENCE POST 1' EAST.

**MONUMENT SET:** NONE. ACCEPTED THE FOUND BRASS CAP AS MARKING THE QUARTER CORNER POSITION. SET A METAL POST WITH SURVEY MARKER SIGN 1' WEST.

**NOTES:** SEE DRAWING ON PAGE 2 FOR TIES TO ACCESSORIES.  
ALUMINUM NAILS (SET IN RE 12191) IN THE BEARING TREES WERE FOUND AND TIED IN THIS SURVEY. THEY CONFIRM THE POSITION OF THE FOUND BRASS CAP.

### NOTES AND OTHER INFORMATION

**BASIS OF BEARING:** TRUE BEARINGS, ROTATED FROM GRID (NAD '83/'91), BASED UPON GPS OBSERVATION AT NEARBY TEMPORARY STATION. "THETA" ANGLE AT CORNER =  $-1^{\circ} 58' 41.9''$

**GEOGRAPHIC MAP LOCATION:** FOR NAVIGATION TO CORNER AREA - NOT OF SURVEY GRADE ACCURACY  
NAD 83/91 VALUES      LATITUDE: N  $44^{\circ} 16' 51.2''$       LONGITUDE: W  $123^{\circ} 23' 29.9''$

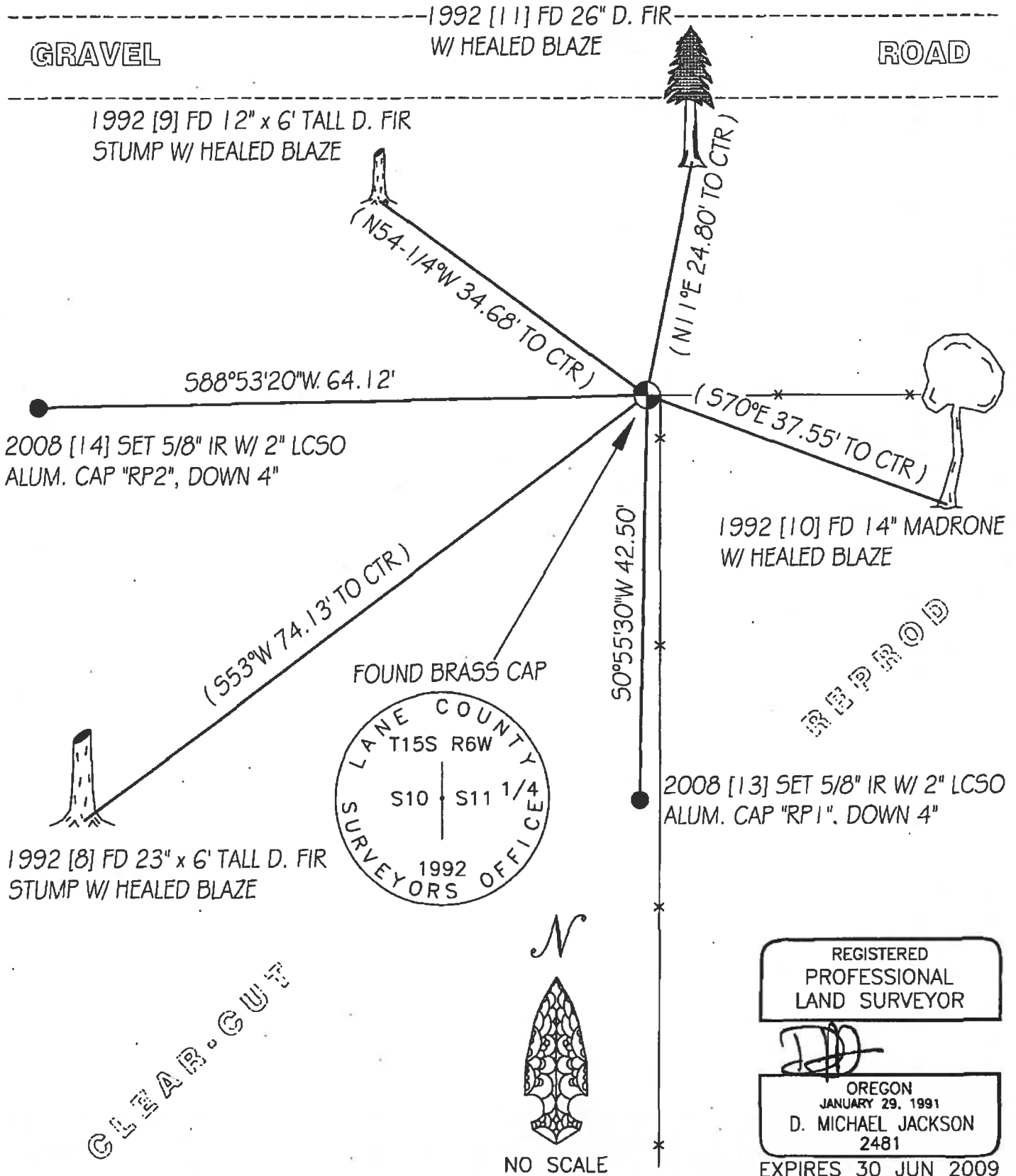
**EQUIPMENT USED:** LEICA TCR 1203; TRIMBLE R7, R8

**DATE OF SURVEY:** NOVEMBER 12, 2008

**BY:** PEDER A. ALLISON, PLS, ASSOCIATE SURVEYOR *PA*  
JOHN RANDALL, ENGINEERING TECH I *JR*

LANE COUNTY SURVEYORS OFFICE  
DEPARTMENT OF PUBLIC WORKS

FILE NO: 15-06-10 E1/4  
TRGCDB: 1506500540  
INDEX NO: 15150



CORNER REPORT  
THE 1/4 CORNER COMMON TO SECTIONS 10 AND 11 T15S, R6W.

---

G.L.O. NOTES DATED: 1854

BY: K. WEBSTER  
(GLO VOL R-30)

CORNER: SET POST.

ACCESSORIES:

1854 [1] A 40" W. OAK BRS S89-1/2°E @ 261 LKS = 172.3'.  
1854 [2] AN 18" W. OAK BRS N2-1/2°W @ 601 LKS = 396.7'.

---

REESTABLISHMENT NOTES DATED: 1941

BY: W.C. GALLOWAY  
(BENTON CS #297 &  
RE-ESTAB #2924)

EVIDENCE RECOVERED:

1854 [1] A 40" OAK STUB BRS S89-1/2°E @ 2.61 CHS = 172.3' (RECORD).  
1854 [2] AN 18" OAK STUMP BRS N2-1/2°W @ 6.01 CHS = 396.7' (RECORD).

MONUMENT SET: A 1-1/2" X 34" IRON ROD.

ACCESSORIES ESTABLISHED:

1941 [3] A 22" BLAZED FIR BRS S70°E @ .386 CHS = 25.48'.  
1941 [4] A 24" BLAZED DOUBLE FIR BRS S18-1/2°E @ .505 CHS = 33.33'.  
1941 [5] A 3" UNMARKED FIR BRS N10°40'W @ .246 CHS = 16.24'.

---

REESTABLISHMENT NOTES DATED: 1980

BY: T. SAUTER-LCSO  
(RE-ESTAB #8249)

EVIDENCE RECOVERED:

1854 [1] FOUND A ROOT HOLE BRS S89-1/2°E @ 261 LKS = 172.3' (RECORD)

MONUMENT SET: SET A BRASS CAP IN A CEMENT FILLED PVC PIPE.

ACCESSORIES ESTABLISHED:

1980 [6] A 10" MADRONE MARKED "CSBT" BRS S64-1/2°E @ 35.75' TO FACE.  
1980 [7] AN 11" FIR MARKED "CSBT" BRS N6-1/4°E @ 22.55' TO FACE.

NOTE: IT APPEARS THAT SAUTER WAS NOT AWARE OF THE GALLOWAY SURVEY.

---

**CORNER EVIDENCE**

**EVIDENCE RECOVERED:** AT THE CORNER POSITION FOUND A 1/2" X 38" LAG BOLT WITH A 1" SQUARE HEAD. THE BOLT HAS A "S" BEND TO IT, BUT THE LOWER 30" WAS FOUND TO BE VERTICAL AND ACCEPTED.

1941 [3] A 30" DIA. X 24" TALL ROTTED D. FIR STUMP WITH VISIBLE SCRIBING BRS S70-1/2°E @ 25.64' TO CENTER (S70°E @ 25.48').

1941 [4] A 41" DIA. X 12" TALL ROTTED D. FIR STUMP WITH VISIBLE SCRIBING BRS S19-1/4°E @ 33.41' TO CENTER (S18-1/2°E @ 33.33').

**MONUMENT SET:** REFERENCED AND REMOVED THE BOLT AND REPLACED IT WITH A 1-1/2" X 30" IRON PIPE AND BRASS CAP. SET A WHITE 'DEEP-1' MAGNET 30" BELOW THE CAP. RESET THE BOLT ALONGSIDE THE PIPE.

**ACCESSORIES ESTABLISHED:**

1992 [9] AN 18" D. FIR BLAZED AND SCRIBED "CSBT" BRS S53°W @ 74.13' TO CENTER. DISTANCE IS TO A NAIL SET IN THE N'LY SIDE. SET A BLUE 'DEEP-1' MAGNET ON LINE, 12" BELOW THE SURFACE, AND 64.2' FROM THE CORNER MONUMENT.

1992 [10] A 12" D. FIR BLAZED AND SCRIBED "CSBT" BRS N54-1/4°W @ 34.68' TO CENTER. DISTANCE IS TO A NAIL SET IN THE N'LY SIDE. SET AN ORANGE 'DEEP-1' ON LINE 12" BELOW THE SURFACE, AND 24.8' FROM THE CORNER MONUMENT.

1992 [11]-PREVIOUSLY 1980 [6]- A 14" MADRONE WITH VISIBLE SCRIBING ON A PARTLY HEALED FACE BRS S70°E @ 37.55' TO CENTER. DISTANCE IS TO A NAIL SET IN THE S'LY SIDE. SET A PINK 'DEEP-1' MAGNET ON LINE, 12" BELOW THE SURFACE, AND 27.8' FROM THE CORNER MONUMENT.

1992 [12]-PREVIOUSLY 1980 [7]- A 19" D. FIR WITH A HEALED FACE BRS N11°E @ 24.80' TO CENTER. DISTANCE IS TO A NAIL SET IN THE E'LY SIDE. SET A SILVER 'DEEP-1' MAGNET ON LINE, 12" BELOW THE SURFACE, AND 15.0' FROM THE CORNER MONUMENT.

1992 [13] A FOUND 2-3/4" BRASS CAP IN A 30" LONG CEMENT FILLED PVC PIPE BRS N49°14'38"E @ 2.56'. ADDED THE MARKS "AM" TO THE CAP AND BURIED IT 12" BELOW THE SURFACE. NOTE: THIS CAP WAS SET IN 1980 TO MARK THE 1/4 CORNER POSITION.

**NOTES AND OTHER INFORMATION:** BEARINGS ARE BASED ON A SOLAR OBSERVATION BY THE HOUR ANGLE METHOD. MAGNETIC DECLINATION = 19-1/2°E BY W-K COMPASS #23157. MEASUREMENTS MADE WITH WILD T-1000/DI-1600 EDM.

**DATE:** 11-5-92

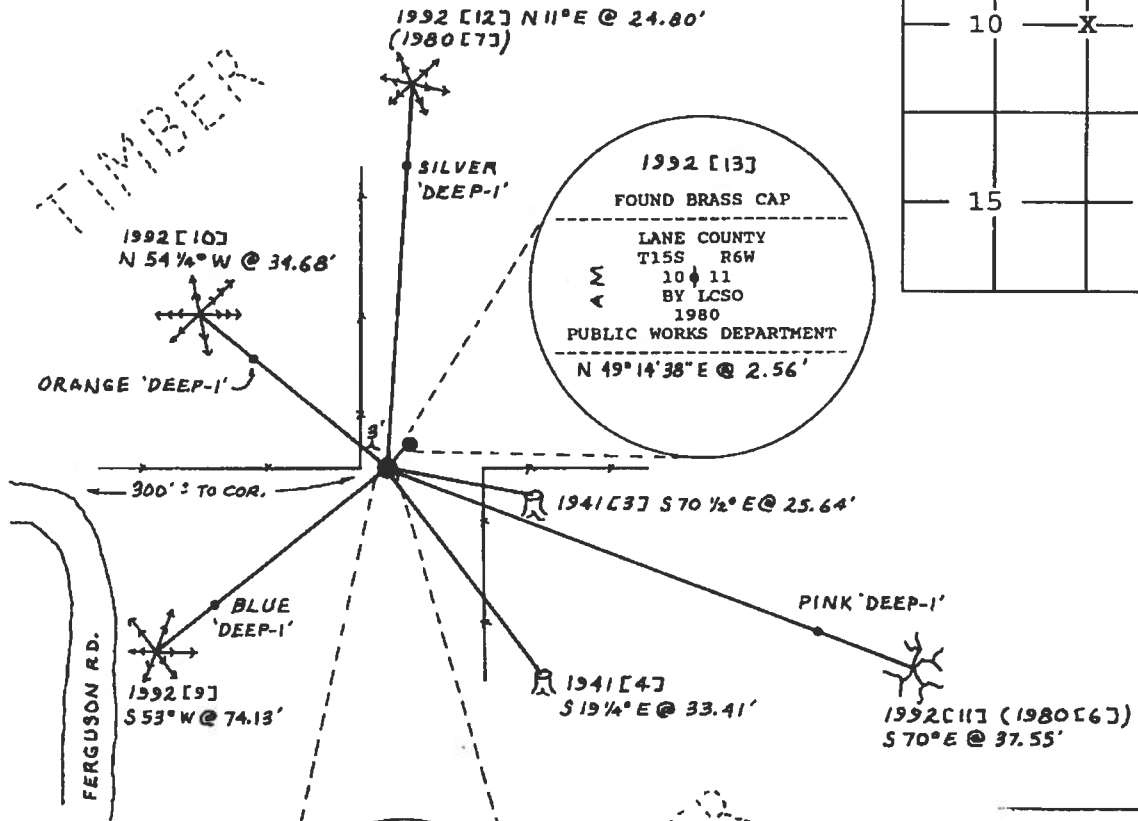
**BY:** BRUCE BOTHEL ET-II BB

**PRESENT:** JOHN C. RANSOM ET-I JCR

CORNER EVIDENCE

SECTION DIAGRAM GRID

	T15S R6W	
10	X	11
15		14



REGISTERED PROFESSIONAL SURVEYOR

*K. Robert Ezell*

OREGON  
JULY 16, 1971  
KENNETH ROBERT EZELL  
952  
EXPIRATION DATE  
DEC. 31 1993



LANE COUNTY SURVEYORS DIVISION RESTORED CORNER  
DEPARTMENT OF PUBLIC WORKS

0010155

INDEX NO. 8249

CORNER  $\frac{1}{4}$  BETWEEN SEC. 10 + 11, T. 15 S., R. 6W, W.M.

G.L.O. NOTES DATED: 1854 BY: G.L.O.

CORNER: POST

ACCESSORIES: DW. OAK 40" S89 $\frac{1}{2}$ E 261 LINKS (2) W. OAK 18" N29W  
601 LINKS

REESTABLISHMENT NOTES DATED: BY:

EVIDENCE RECOVERED:

CORNER SET:

ACCESSORIES ESTABLISHED:

REESTABLISHMENT NOTES DATED: BY:

EVIDENCE RECOVERED:

CORNER SET:

ACCESSORIES ESTABLISHED:

REESTABLISHMENT NOTES DATED: BY:

EVIDENCE RECOVERED:

CORNER SET:

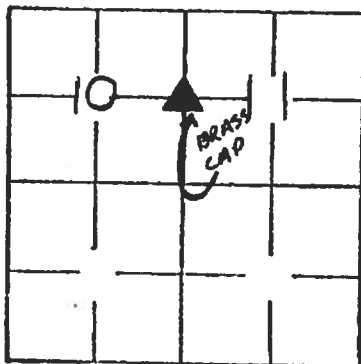
ACCESSORIES ESTABLISHED:

REMONUMENTATION

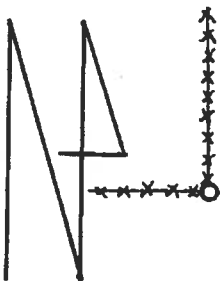
DATE: 5-7-1980 BY: TOM SAUTER TITLE: ENG. TECH. I FIRM: LANE COUNTY SURVEYORS  
EVIDENCE RECOVERED: FOUND ROOT HOLE OF BT NO. 1 S89 $\frac{1}{2}$ E 261 LINKS  
AS PER LANE COUNTY SURVEY C.S.

CORNER SET: BRASS CAP IN PVC PIPE FILLED WITH CEMENT .20 FOOT  
ABOVE SURFACE SET 5' METAL FENCE POST WITH WITNESS SIGN  
ACCESSORIES ESTABLISHED: MARKED NEW? 10" MADRONE S64 $\frac{1}{2}$ E 35.75  
FEET TO FACE MARKED CSBT  
11" FIR N66 $\frac{1}{4}$ E 22.55 FEET TO FACE MARKED "CSBT"

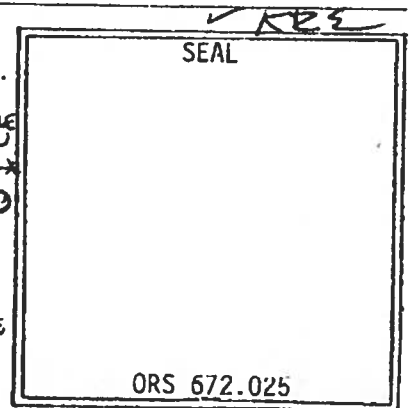
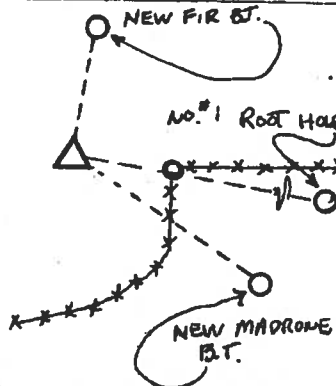
BRASS CAP STAMPED: BY LANE COUNTY SURVEYORS OFFICE  
OTHER INFORMATION: PRESENT G. MAYNARD ENG. TECH. I



SECTION DIAGRAM



SKETCH



## BENTON COUNTY CORNER RESTORATION BOOK NO. 1

C.S. # 72

by W.C. Galloway

July 1, 1937

Warren Dudge

Radolph Stewart

1/4 Sec. Corner bet. Secs. 11 and 12 T. 15-5

Set a thin 3/4" pipe in stake print

Ash 14" in dia. bears N. 87° E. .79 chs. std

Pine 18" " " S 56° W. 1.14 " "

C.S. No 297

by W.C.G

Dec. 11, 1941

Witnesses A.H. Seitz Mkd

Norman W. Miller

1/4 Sec Corner bet Secs. 2 and 11 T. 15-6

Set 1/2 of a buggy axle, Point on Stone 7"x16"x18" N. 20 ft.

Oak 24" in dia. bears N. 74° E. 1.83 shs std.

Fir 28" " " S. 54° E. 1.136 " notch N.

As above

Corner to Secs. 1, 2, 11 &amp; 12 T. 15-6

Set 1/2 of a buggy axle. Fir 40" S. 25° W. 6.00 chs. Found letters, 115 tree and stump rotten.

Mkd. Oak 7" in dia. bears N. 52° E. .662 chs.

" " 12" " " S 73° E. 1.002 "

" " 15" " " S. 24 3/4° E. 5.42 " std

" " 15" " " N. 34° E. 5.09 " "

As above

Dec. 12, 1941

1/4 Sec. cor. bet. Secs. 11 and 12. T 15-6

1 1/4" Iron Shaft

Oak 24" in dia. bears N. 6° E. 1.02 chs. std.

" 10" " " S. 25° W. .75 " "

As above

Dec. 15, 1941

1/4 Sec. cor. bet. Sections 10 and 11 T 15-6

Set 1/2" Iron rod 34" long

Oak 18" in dia. bears N. 2 1/2° W. 6.01 chs. stump

" 40" " " S. 89 1/2° E. 2.61 " stub

Fir 22" " " S. 70° E. .386 " blazed

Double fir 24" " " S. 18 1/2° E. .505 " "

" 3" " " N. 10° 40' W. .246 " not mkd.

Dec. 15, 1941

As above

Corner to Sections 2, 3, 10 and 11 T 15-6

Set 1 1/4" Iron pin 18" long

Oak 9" in dia. bears N. 32° E. .213 chs.

" 15" " " N. 88° E. .181 "

" 17" " " S. 1° E. .397 "

Fir 18" " " N. 57° W. .291 " mark N.

As above

Dec. 26, 1941

1/4 Section cor. bet. Secs. 11 and 14 T 15-6

Set 1/2" Galv. pipe found stake print.

Oak 18" in dia. bears S 31° 20' E. 1.79 shs. std.

" 12" " " N. 62° 30' W. 1.50 " stump

Mkd. fir 25" " " N. 77° E. .357 "

" " 17" " " S 39° E. .200 "

C.S. No. 297

Witness P.M. Peterson

L.W. Holbrook

July 1942

1/4 Sec. Cor. bet. Secs. 9 and 10 T. 15-6

Set 3/4" Pipe, bolt in top, mound of stone

Oak 14" in dia. bears S. 11° E. .20 std. blaze open

" 8" " " S. 38 1/2° W. 1.20 " dead

" 16" " " N. 18° E. .718 chs.

Fir 8" " " S. 50° 20' W. .232 "

$\frac{1}{4}$ -Section corner between sections 10 and 11, Twp. 15-6

02924

Reestablishment by W. C. Galloway

December 15, 1941

Set  $\frac{1}{2}$ " iron rod 34" long

Oak 18" in diam bears N  $2\frac{1}{2}^{\circ}$  W

6.01 chains

Oak 40" in diam bears S  $89\frac{1}{2}^{\circ}$  E

2.61 chains

Fir 22" in diam bears S  $70^{\circ}$  E

.386 chains

Fir 24" in diam bears S  $18\frac{1}{2}^{\circ}$  E

.505 chains

Fir 3" in diam bears N  $10^{\circ} 40'$  W

.246 chains

3452