

156600540

DATE 07/08/2019

TOWNSHIP 15 SOUTH, RANGE 6 WEST, WILLAMETTE MERIDIAN; SECTION 11 CORNER EAST 1/4
DONATION LAND CLAIM N/A CORNER N/A

COMMON CORNER(S):

WEST 1/4 CORNER SECTION 12

RECORDS (INFORMATION IN *BOLD ITALICS* IS COUNTY STAFFS' INTERPRETATION OF THE RECORD)

BASED ON EXTENSIVE RESEARCH AND RECOVERY OF EVIDENCE, THIS OFFICE HAS DETERMINED THAT MOST GENERAL LAND OFFICE SURVEYORS IN BENTON COUNTY MEASURED TO THE FACE OF BEARING TREES.

- [01] GENERAL LAND OFFICE (GLO) NOTES BY KIMBALL WEBSTER, D.S., DATED APRIL 21, 1854. SET POST FROM WHICH A W. OAK 24" DIA BEARS N6°E, 102 LINKS (67.32 FEET); A W. OAK 10" DIA BEARS S25°W, 75 LINKS (49.50 FEET).
- [02] BENTON COUNTY SURVEY NO. 1552 (OLD NO. 297) FIELD NOTES (FIELD BOOK 81, PAGE 17) BY W. C. GALLOWAY, C.S., DATED DECEMBER 12, 1941. SET 1-1/4" IRON SHAFT. OAK 24" DIA (GLO BT) BEARS N6°E, 102 LINKS (67.32 FEET) STANDING; OAK 10" DIA (GLO BT) BEARS S25°W, 75 LINKS (49.50 FEET) STANDING.
- [03] BENTON COUNTY CORNER RESTORATION BOOK NO. 1, PAGE 236, BY W. C. GALLOWAY, C.S., DATED DECEMBER 12, 1941. 1-1/4" IRON SHAFT. OAK 24" DIA (GLO BT) BEARS N6°E, 1.02 CHAINS (67.32 FEET) STANDING; OAK 10" DIA (GLO BT) BEARS S25°W, 0.75 CHAINS (49.50 FEET) STANDING.
- [04] BENTON COUNTY CORNER RESTORATION NO. 2927. TRANSCRIBED FROM RECORD [03] AND MAY CONTAIN ERRORS AND/OR OMISSIONS.
- [05] BENTON COUNTY MAP NO. 15-6-00001 BY W. C. GALLOWAY, C.S., DATED DECEMBER 27, 1941. 1-1/4" IRON SHAFT. OAK 24" DIA (GLO BT) BEARS N6°E, 1.02 CHAINS (67.32 FEET) STANDING; OAK 10" DIA (GLO BT) BEARS S25°W, 0.75 CHAINS (49.50 FEET) STANDING.
- [06] LANE COUNTY CORNER REPORT NO. 8050 BY TOM SAUTER, ENGR. TECH, DATED NOVEMBER 20, 1979. FOUND OAK STUMP 39" DIA (GLO BT) BEARS N6°E, 102 LINKS (67.32 FEET) WITH AXE MARKS AND PARTIAL FACE. SET BRASS CAP AND PVC PIPE FILLED WITH CEMENT AND FIVE FOOT METAL POST WITH WITNESS SIGN. FIR 11" DIA BEARS N84°W, 27.05 FEET TO FACE, SCRIBED "CSBT"; FIR 6.5" DIA BEARS S41°E, 24.2 FEET TO FACE. ALSO FOUND A 1" AXLE BEARS S77°W, 4.0 FEET. FOUND AN OAK STAKE 4" X 4" BEARS S72°W, 4.3 FEET. FENCE RUNS NORTH-SOUTH AND IS APPROXIMATELY 4 FEET WEST OF 1/4 CORNER.
- [07] LANE COUNTY SURVEY NO. 26873 BY CHARLES W. GUILLE, P.L.S., DATED OCTOBER 17, 1984. FOUND LANE COUNTY BRASS CAP AND ACCESSORIES PER RE-EST. NO. 8050 IN GOOD CONDITION.
- [08] LANE COUNTY CORNER REPORT NO. 12192 BY K. ROBERT EZELL, P.L.S., DATED DECEMBER 7, 1992. AT THE CORNER POSITION FOUND A 1" X 25" IRON SHAFT IN GOOD CONDITION 1 FOOT EASTERLY OF A 12" DIA FENCE POST. A 36" DIA X 36" TALL ROTTEN OAK STUMP WITH A FACE (GLO BT) BEARS N8-1/2°E, 68.70 FEET TO CENTER. REFERENCED AND REMOVED THE 1" IRON SHAFT AND REPLACED IT WITH A 1-1/2" X 30" IRON PIPE AND A 2-1/2" BRASS CAP MARKED "LANE COUNTY 1/4 T15S R6W S11 S12 1992 SURVEYORS OFFICE". SET A WHITE "DEEP-1" MAGNET 30" BELOW THE CAP, AND BURIED THE 1" IRON SHAFT BESIDE THE NEW MONUMENT. D. FIR 7" DIA BLAZED AND SCRIBED "CSBT" BEARS N47-1/4°E, 38.94 FEET TO CENTER. DISTANCE IS TO A NAIL SET IN THE BASE OF THE TREE ON THE NORTHERLY SIDE. SET A SILVER "DEEP-1" MAGNET ON LINE, 12" BELOW THE SURFACE, AND 29.2 FEET FROM THE CORNER MONUMENT. D. FIR 8" DIA BLAZED AND SCRIBED "CSBT" BEARS S27-1/4°W, 69.46 FEET TO CENTER. DISTANCE IS TO A NAIL SET IN THE BASE OF THE TREE ON THE NORTHWESTERLY SIDE. SET A BLUE "DEEP-1" MAGNET ON LINE, 12" BELOW THE SURFACE, AND 59.7 FEET FROM THE CORNER MONUMENT. D. FIR 12" DIA WITH HEALED FACE (CSBT) BEARS N81-1/2°W, 22.35 FEET TO CENTER. DISTANCE IS TO A NAIL SET IN THE BASE OF THE TREE ON THE SOUTHERLY SIDE. SET AN ORANGE "DEEP-1" MAGNET ON LINE, 12" BELOW THE SURFACE, AND 12.6 FEET FROM THE CORNER MONUMENT. D. FIR 12" DIA WITH HEALED FACE (CSBT) BEARS S49-1/2°E, 26.38 FEET TO CENTER. DISTANCE IS TO A NAIL SET IN THE BASE OF THE TREE ON THE NORTHEASTERLY SIDE. SET A PINK "DEEP-1" MAGNET ON LINE, 12" BELOW THE SURFACE, AND 16.6 FEET FROM THE CORNER MONUMENT. FOUND A 2-3/4" BRASS CAP MARKED "LAND COUNTY T15S R6W 11 12 1/4 COR 1979 PUBLIC WORKS DEPT" SET IN A 30" LONG CONCRETE FILLED PVC PIPE BEARS N75°27'47"E, 3.99 FEET. REFERENCED AND REMOVED THE PIPE AND CAP, STAMPED THE CAP "AM", AND BURIED THE PIPE 1 FOOT BELOW THE SURFACE WITH THE CAP IN ITS REFERENCED POSITION.
- [09] BENTON COUNTY SURVEY NO. 8892 BY JIM S. PETERSON, P.L.S., DATED JUNE 20, 1994. FOUND 2-1/2" BRASS CAP.
- [10] BENTON COUNTY SURVEY NO. 9010 (ALSO BEING LANE COUNTY SURVEY NO. 33078) BY THEODORE JAMES LANGTON, P.L.S., DATED SEPTEMBER 8, 1995. FOUND 2-1/2" BRASS CAP.
- [11] LANE COUNTY CORNER REPORT NO. 16685 BY MIKEAL J. BLOMME, P.L.S., DATED MARCH 15, 2019. AT THE CORNER POSITION FOUND A 1" IRON PIPE WITH A 2-3/8" BRASS CAP MARKED "LANE COUNTY T15S R6W 1/4 S11 S12 1992 SURVEYORS OFFICE", 2" ABOVE GRADE, AND 1 FOOT EAST OF A NORTH-SOUTH FENCE LINE. SHATTERED STUMP REMAINS (GLO BT) NEAR RECORD POSITION N6°E, 67.3 FEET. D. FIR BLOW DOWN 9" DIA (CSBT) OUT OF RECORD POSITION N47-1/4°E, 38.94 FEET. D. FIR SNAG WITH A HEALED FACE (CSBT) BEARS N81°W, 22.3 FEET TO CENTER. D. FIR 13" DIA WITH HEALED FACE (CSBT) BEARS S27-1/2°W, 69.5 FEET TO CENTER. DISTANCE MEASURED IS TO AN ALUMINUM NAIL SET AT SIDE/CENTER OF TREE. D. FIR 12" DIA WITH HEALED FACE (CSBT) BEARS S49-1/2°E, 26.4 FEET TO CENTER. DISTANCE MEASURED IS TO AN ALUMINUM NAIL SET AT SIDE/CENTER OF TREE. D. FIR 27" DIA MARKED "CSBT" IN BARK BEARS N60°E, 39.9 FEET TO CENTER. DISTANCE MEASURED IS TO AN ALUMINUM NAIL SET AT SIDE/CENTER OF TREE. W. OAK 8" DIA MARKED "CSBT" BEARS N17-1/2°W, 34.0 FEET TO CENTER. DISTANCE MEASURED IS TO AN ALUMINUM NAIL SET AT SIDE/CENTER OF TREE.

FIRM/AGENCY: BENTON COUNTY SURVEYOR'S OFFICE
ADDRESS: 360 S.W. AVERY AVE., CORVALLIS, OR 97333; PH. 541-766-6821
RESEARCH BY: DAVID L. MALONE, P.L.S.
DATA ENTRY BY: SAME

BENTON COUNTY CORNER RESTORATION BOOK 1

C.S. # 72

by W.C. Galloway

July 1, 1937

Warren Dudge

Rudolph Stewart

1/4 Sec. Corner bet. Secs. 11 and 12 T. 15-5

Set a thin 3/4" pipe in stake print

Ash 14" in dia. bears N. 87° E. .79 chs. std

Pine 18" " " S 56° W. 1.14 " "

C.S. No 297

by W.C.G

Dec. 11, 1941

Witnesses A.H. Seitz

Norman W. Miller

1/4 Sec Corner bet. Secs. 2 and 11 T. 15-6

Set 1/2 of a buggy axle, Point on Stone 7"x16"x18" N. 20 ft.

Oak 24" in dia. bears. N 74° E. 1.83 chs std.

Mkd Fir 28" " " S. 54° E. 1.136 " notch N.

Corner to Secs. 1, 2, 11 & 12 T. 15-6

Set 1/2 of a buggy axle.

Mkd. Oak 7" in dia. bears N. 52° E. .662 chs. Fir 40" S. 25° W. 6.00 chs. Found left fork 115 tree and stump rotten.

" 12" " " S 73° E. 1.002 "

" 15" " " S. 24 3/4° E. 5.42 " std

" 15" " " N. 34° E. 5.09 " "

As above

Dec. 12, 1941



As above

Dec. 15, 1941

1/4 Sec. cor. bet. Sections 10 and 11 T 15-6

Set 1/2" Iron rod 34" long

Oak 18" in dia. bears N. 2 1/2° W. 6.01 chs. stamp

" 40" " " S. 89 1/2° E. 2.61 " stub

Fir 22" " " S. 70° E. .386 " blazed

Double fir 24" " " S. 18 1/2° E. .505 " "

" 3" " " N. 10° 40' W. .246 " not mkd.

Dec. 15, 1941

As above

Corner to Sections 2, 3, 10 and 11 T 15-6

Set 1 1/4" Iron pin 18" long

Oak 9" in dia. bears N. 32° E. .213 chs.

" 15" " " N. 88° E. .181 "

" 17" " " S. 1° E. .397 "

Fir 18" " " N. 57° W. .291 " mark N.

As above

Dec. 26, 1941

1/4 Section cor. bet. Secs. 11 and 14 T 15-6

Set 1/2" Galv. pipe found stake print.

Oak 18" in dia. bears S 31° 20' E. 1.79 chs. std.

" 12" " " N. 62° 30' W. 1.50 " stamp

Mkd. fir 25" " " N. 77° E. .357 "

" " 17" " " S 39° E. .200 "

C.S. No. 297

Witness K.M. Peterson

L.W. Holbrook

July 1942

1/4 Sec. Cor. bet. Secs. 9 and 10 T. 15-6

Set 3/4" Pipe, bolt in top, mound of stone

Oak 14" in dia. bears S. 11° E. .20 std. blaze open

" 8" " " S. 38 1/2° W 1.20 " dead

" 16" " " N. 18° E. .718 chs.

Fir 8" " " S. 50° 20' W. .232 "

$\frac{1}{4}$ -Section corner between sections 11 and 12, Twp. 15-6

02927
3455

Reestablishment by W. C. Galloway

December 12, 1947

$1\frac{1}{4}$ " Iron shaft

Oak 24" in diam bears N 6° E
Oak 10" in diam bears S 25° W

1.02 chains
.75 chains

LANE COUNTY SURVEYORS DIVISION RESTORED CORNER
DEPARTMENT OF PUBLIC WORKS

INDEX NO. 8050

0009932

CORNER 1/4 corner betw/ sections 11 and 12, T. 15S. S., R. 6W., WM.

G.L.O. NOTES DATED: 1854 BY: GLO

CORNER: POST

ACCESSORIES: a w. OAK 24 in. diameter N6°E 102 lks.
a w. OAK 10 in. diameter S25°W 75 lks.

REESTABLISHMENT NOTES DATED: _____ BY: _____

EVIDENCE RECOVERED: _____

CORNER SET: _____

ACCESSORIES ESTABLISHED: _____

REESTABLISHMENT NOTES DATED: _____ BY: _____

EVIDENCE RECOVERED: _____

CORNER SET: _____

ACCESSORIES ESTABLISHED: _____

REESTABLISHMENT NOTES DATED: _____ BY: _____

EVIDENCE RECOVERED: _____

CORNER SET: _____

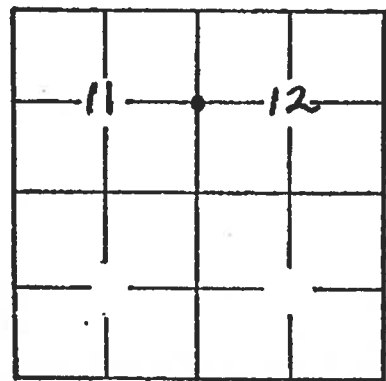
ACCESSORIES ESTABLISHED: _____

DATE: 11/20/79 BY: EAM Tom Sauter REMONUMENTATION TITLE: Engineering Tech. Firm: Lane County S.O.
EVIDENCE RECOVERED: FD, 39 in. diam. OAK STUMP ON A N6°E at 102 lks. with axe marks and partial face.

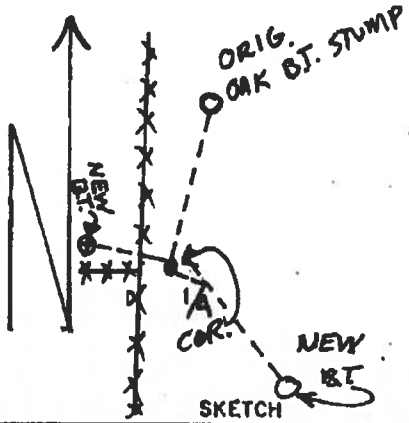
CORNER SET: Set BRASS CAP and PVC PIPE, filled with cement and five foot metal post with witness sign.
ACCESSORIES ESTABLISHED: a 11 in. FIR N84W 27.05 ft to face; a 6.5 in. FIR S41E; 24.2 ft. to face. Also fd. a one in. axle S77W 4.0 ft.; fd. an OAK STAKE 4 in. x 4 in. S72W 4.3 ft. Fence runs north and south and is ~ 4 ft west of 1/4 corner.

OTHER INFORMATION: _____

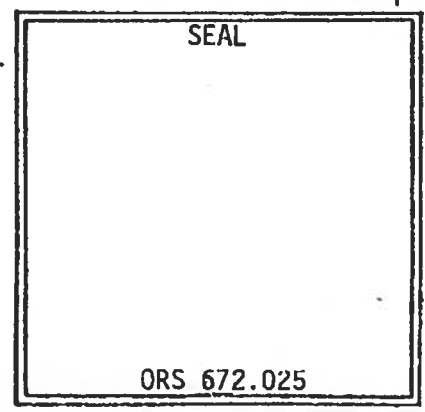
✓ KRE 12/27/79



*SECTION DIAGRAM



SKETCH



CORNER REPORT
THE 1/4 CORNER COMMON TO SECTIONS 11 & 12, T15S, R6W.

G.L.O. NOTES DATED: 1854

BY: K. WEBSTER
(GLO VOL R-30)

CORNER: SET POST.

ACCESSORIES:

1854 [1] A 24" W. OAK BRS N6°E @ 102 LKS = 67.3'
1854 [2] A 10" W. OAK BRS S25°W @ 75 LKS = 49.5'

REESTABLISHMENT NOTES DATED: 1941

BY: W.C. GALLOWAY
(BENTON COUNTY RE-ESTAB
#2927 & CS #297)

EVIDENCE RECOVERED: AN 1-1/4" IRON SHAFT (GALLOWAY'S NOTES ARE NOT
CLEAR AS TO WHETHER THIS MONUMENT WAS FOUND OR SET).

1854 [1] A 24" W. OAK BRS N6°E @ 102 LKS = 67.32' (RECORD).
1854 [2] A 10" W. OAK BRS S25°W @ 75 LKS = 49.50' (RECORD).

MONUMENT SET: SEE ABOVE.

ACCESSORIES ESTABLISHED: NOTHING MENTIONED.

REESTABLISHMENT NOTES DATED: 1979

BY: T. SAUTER - LCSO
(RE-ESTAB #8050)

EVIDENCE RECOVERED:

1854 [1] A 39" OAK STUMP WITH AXE MARKS AND A PARTIAL FACE BRS N6°E @
102 LKS = 67.32' (RECORD).

NOTE:

A 1" AXLE BRS S77°W @ 4.0'
A 4"X4" OAK STAKE BRS S72°W @ 4.3'
A FENCE LINE RUNS NORTH-SOUTH 4' WEST OF THE CORNER.

MONUMENT SET: BRASS CAP AND PVC PIPE FILLED WITH CEMENT.

ACCESSORIES ESTABLISHED:

1979 [3] AN 11" FIR BRS N84°W @ 27.05' TO FACE.
1979 [4] A 6.5" FIR BRS S41°E @ 24.2' TO FACE.

NOTE: IT APPEARS THAT IN 1979 SAUTER WAS NOT AWARE OF THE 1941 GALLOWAY
WORK.

REESTABLISHMENT NOTES DATED: 1984

BY: C.W. GUILLE
(CSF #26873)

EVIDENCE RECOVERED: LCSO BRASS CAP AND ALL ACCESSORIES PER RE-ESTAB
#8050 FOUND IN GOOD CONDITION.

MONUMENT SET: NOTHING MENTIONED.

ACCESSORIES ESTABLISHED: NOTHING MENTIONED.

NOTE: IT APPEARS THAT IN 1984 GUILLE WAS NOT AWARE OF THE 1941 GALLOWAY
WORK.

CORNER EVIDENCE

EVIDENCE RECOVERED: AT THE CORNER POSITION FOUND A 1"X25" IRON SHAFT IN GOOD CONDITION 1' E'LY OF A 12" DIA. FENCE POST.

1854 [1] A 36" DIA X 36" TALL ROTTEN OAK STUMP WITH A FACE BRS N8-1/2°E @ 68.70' TO CENTER (N6°E @ 67.3' TO FACE).

MONUMENT SET: REFERENCED & REMOVED THE 1" IRON SHAFT AND REPLACED IT WITH A 1-1/2" X 30" IRON PIPE AND A 2-1/2" LCSO BRASS CAP. SET A WHITE 'DEEP-1' MAGNET 30" BELOW THE CAP, AND BURIED THE 1" IRON SHAFT BESIDE THE NEW MONUMENT.

ACCESSORIES ESTABLISHED:

1992 [6] A 7" D. FIR BLAZED AND SCRIBED "CSBT" BRS N47-1/4°E @ 38.94' TO CENTER. DISTANCE IS TO A NAIL SET IN THE BASE OF THE TREE ON THE N'LY SIDE. SET A SILVER 'DEEP-1' MAGNET ON LINE, 12" BELOW THE SURFACE, AND 29.2' FROM THE CORNER MONUMENT.

1992 [7] AN 8" D. FIR BLAZED AND SCRIBED "CSBT" BRS S27-1/4°W @ 69.46' TO CENTER. DISTANCE IS TO A NAIL SET IN THE BASE OF THE TREE ON THE NW'LY SIDE. SET A BLUE 'DEEP-1' MAGNET ON LINE, 12" BELOW THE SURFACE, AND 59.7' FROM THE CORNER MONUMENT.

1992 [8] PREVIOUSLY 1979 [3] A 12" D. FIR WITH HEALED FACE BRS N81-1/2°W @ 22.35' TO CENTER. DISTANCE IS TO A NAIL SET IN THE BASE OF THE TREE ON THE S'LY SIDE. SET AN ORANGE 'DEEP-1' MAGNET ON LINE, 12" BELOW THE SURFACE, AND 12.6' FROM THE CORNER MONUMENT.

1992 [9] PREVIOUSLY 1979 [4] A 12" D. FIR WITH HEALED FACE BRS S49-1/2°E @ 26.38' TO CENTER. DISTANCE IS TO A NAIL SET IN THE BASE OF THE TREE ON THE NE'LY SIDE. SET A PINK 'DEEP-1' MAGNET ON LINE, 12" BELOW THE SURFACE, AND 16.6' FROM THE CORNER MONUMENT.

1992 [10] FOUND A 2-3/4" LCPWD BRASS CAP SET IN A 30" LONG CONCRETE FILLED P.V.C. PIPE BRS N75°27'47"E @ 3.99'. REFERENCED & REMOVED THE PIPE & CAP, STAMPED THE CAP 'AM', AND BURIED THE PIPE 1' BELOW THE SURFACE WITH THE CAP IN ITS REFERENCED POSITION. NOTE: THIS CAP WAS SET IN 1979 TO MARK THE 1/4 CORNER POSITION.

NOTES AND OTHER INFORMATION: BEARINGS ARE BASED ON A SOLAR OBSERVATION BY THE HOUR ANGLE METHOD. MAGNETIC DECLINATION = 19-1/2°E BY W-K COMPASS #23157. MEASUREMENTS MADE WITH WILD T-1000/DI-1600 EDM. IT IS BELIEVED THAT K. WEBSTER IN 1854 MEASURED B.T. DISTANCES TO THE FACE.

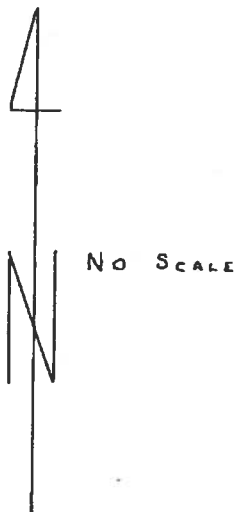
DATE: DECEMBER 7 1992

BY: BRUCE BOTHEL BB

PRESENT: JOHN C. RANSOM J & R

SECTION DIAGRAM GRID

	T15S	R6W	
11	X	12	
14		13	



OAK + FIR

1992 [8]
(1979 [33]) N 81-1/2° W @ 223E'



ORANGE 'DEEP-1'

12" FENCE POST

FOREST

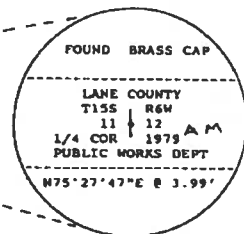
1854 [13]
N 8-1/4° E @ 6820'

1992 [6]
N 47-1/2° @ 3834'



SILVER 'DEEP-1'

1992 [10]



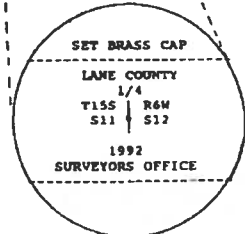
PINK 'DEEP-1'

1992 [9]
(1979 [4])
S 49-1/2° E @ 2638'



BLUE 'DEEP-1'

1992 [7]
S 27-1/4° W @ 6945'



K. Robert Egall
EXP. 12-31-93

CORNER REPORT

THE 1/4 CORNER COMMON TO SECTIONS 11 & 12, T15S, R6W, W. M.

LOCATED ON THE LANE – BENTON COUNTY LINE

SEE RE-ESTABLISHMENT #12192 FOR CORNER HISTORY

CORNER EVIDENCE

EVIDENCE RECOVERED: AT THE CORNER POSITION FOUND A 1" IRON PIPE WITH A 2-3/8" L.C.S.O. BRASS CAP, DATED 1992, 2" ABOVE GRADE, AND 1' EAST OF A NORTH-SOUTH FENCE LINE.

1854 [1] SHATTERED STUMP REMAINS NEAR RECORD POSITION (N 6° E @ 67.3').

1992 [6] A 9" BLOW-DOWN D. FIR, OUT OF POSITION (N 47-1/4° E @ 38.94').

1992 [8] A D. FIR SNAG WITH A HEALED FACE BRS N 81° W @ 22.3' TO CTR (N 81-1/2° W @ 22.35').

MONUMENT SET: NONE. ACCEPTED THE FOUND 1992 BRASS CAP AS MARKING THE 1/4 CORNER.

ACCESSORIES ESTABLISHED: SEE SKETCH ON PAGE 2 FOR TIES AND DESCRIPTIONS.

OTHER INFORMATION

BEARING TREES: DISTANCE SHOWN IS TO AN ALUMINUM NAIL SET AT SIDE/CENTER OF LIVE TREES.

BASIS OF BEARING: S 27-1/4° W, FROM 1/4 CORNER BRASS CAP TO 1992 [7].

GEOGRAPHIC MAP LOCATION: FOR FINDING THE CORNER AREA - NOT OF SURVEY GRADE ACCURACY
NAD 83/91 VALUES: LATITUDE: N 44° 16' 51.6" LONGITUDE: W 123° 22' 17.2"

EQUIPMENT USED: W-K COMPASS #23157 AND STEEL TAPE. MAG DEC = 15° E

DATE OF SURVEY: MARCH 15, 2019

FIELD WORK BY: BRUCE BOTHEL, PLS, ASSOCIATE SURVEYOR *BB*
STUART DUCE, PLS, ASSOCIATE SURVEYOR

LANE COUNTY SURVEYORS OFFICE
DEPARTMENT OF PUBLIC WORKS

FILE NO: 15-06-11 E1/4
TRGCDB: 1506600540
INDEX NO: 16685

TIMBER

2019 [12]
8" W. OAK
MK'D "CSBT"
N17-1/2°W @
34.0' TO CTR

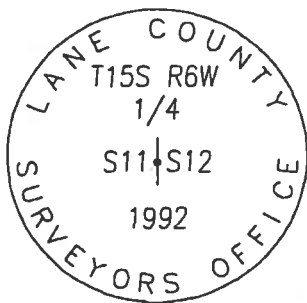


FOUND BRASS CAP

2019 [11]
27" D. FIR MK'D
"CSBT" IN BARK
N60°E @ 39.9'
TO CTR



CLEAR-CUT



CLEAR-CUT

1992 [7]
13" D. FIR W/
HEALED FACE
S27-1/2°W @
69.5' TO CTR



1992 [9]
12" D. FIR W/
HEALED FACE
S49-1/2°E @
26.4' TO CTR



TIMBER



NO SCALE

REGISTERED
PROFESSIONAL
LAND SURVEYOR

OREGON
JUNE 13, 2008
MIKEAL J. BLOMME'
74387

EXPIRES DEC 31, 2019