

157500540

CORNER FILE TRACKING

S:\Survey Corners\CORNERS\Templates\Filetrac2.doc
10/04/2010

CORNER NUMBER
157500540

STEP	HISTORY	RESTORATION
Form Prepared, DB	3/14/2006	9/17/24
Field Inspection, DB	9/3/24	9/3/24
Finish index (count unit)	3/14/2006	9/3/24
Counter Index	9/3/24	9/3/24
GIS Index Form	9/5/24	9/5/24
Checked, DB	9/10/24	9/10/24
Form Edited, DB	9/23/24	9/23/24
Form Signed, DB	9/23/24	9/23/24
Authorize Payment, DB	—	—
Archive Digital Files	9/23/24	9/23/24
Collect Documents	9/23/24	9/23/24
PDF File	9/24/24	9/24/24
Copy For Filming	9/24/24	9/24/24
Scanned (pdf to laserfiche)	9/24/24	9/24/24
Filmed (Archived), DB		
Filed, DB		

(DB) = Entry needed in database (Access).

COMMENTS:

DATE 03/14/2006TOWNSHIP 15 SOUTH, RANGE 07 WEST, WILLAMETTE MERIDIAN; SECTION 10 CORNER EAST 1/4
DONATION LAND CLAIM N/A CORNER N/A**COMMON CORNER(S):**

WEST 1/4 CORNER OF SECTION 11

RECORDS (INFORMATION IN BOLD ITALICS IS COUNTY STAFFS' INTERPRETATION OF THE RECORD)

BASED ON EXTENSIVE RESEARCH AND RECOVERY OF EVIDENCE, THIS OFFICE HAS DETERMINED THAT MOST GENERAL LAND OFFICE SURVEYORS IN BENTON COUNTY BEFORE 1890 MEASURED TO THE FACE OF BEARING TREES.

- [01] GENERAL LAND OFFICE (GLO) NOTES BY EDWARD F. SHARP, D.S., DATED JUNE 8, 1897. *SET A HEMLOCK POST 3 FEET LONG, 3 INCHES SQUARE, 24" IN THE GROUND, MARKED "1/4S" ON WEST FACE FROM WHICH A HEMLOCK 12" DIA BEARS N39°E, 30 LINKS (19.80 FEET) MARKED "1/4SBT"; A HEMLOCK 10" DIA BEARS S36°W, 16 LINKS (10.56 FEET) MARKED "1/4SBT".*
- [02] GENERAL LAND OFFICE (GLO) NOTES BY NORMAN D. PRICE, CADASTRAL ENGINEER, AND OSKAR T. DAUELSBERG, PUBLIC LAND SURVEYOR, DATED SEPTEMBER 16, 1940. *FOUND BADLY DECAYED REMAINS OF A WOODEN STAKE, SHOWING PARTIAL SCRIBE MARKS. SET AN IRON POST, 3 FEET LONG, 1" DIA, 28" IN THE GROUND WITH THE MARKED STAKE DEPOSITED AT THE BASE, WITH BRASS CAP MARKED "1/4 S10 S11 1940", FROM WHICH A HEMLOCK 20" DIA (GLO BT) BEARS N38-3/4°E, 29 LINKS (19.14 FEET) MARKED "1/4S11BT"; A HEMLOCK 16" DIA (GLO BT) BEARS S36-3/4°W, 16 LINKS (10.56 FEET) MARKED "1/4S10BT".*
- [03] BENTON COUNTY CORNER RESTORATION NO. 3712 BY STEVEN P. NESS, P.L.S., DATED NOVEMBER, 1989. *FOUND 1940 GLO MONUMENT TIPPED TO THE SOUTH AND BURIED UNDER THE ROOT OF A HEMLOCK STUMP. FOUND NO EVIDENCE OF THE ORIGINAL HEMLOCK BT'S. RESET 1940 GLO MONUMENT IN ITS ORIGINAL POSITION. A D. FIR 17" DIA BEARS S18°E, 11.0 FEET, MARKED "1/4S11BT"; A D. FIR 16" DIA BEARS S77°W, 26.2 FEET, MARKED "1/4S10BT".*
- [04] LANE COUNTY CORNER REPORT NO. 11512 BY STEVEN P. NESS, P.L.S., DATED NOVEMBER, 1989. *TRANSCRIBED FROM RECORD [03] AND MAY CONTAIN ERRORS AND/OR OMISSIONS.*
- [05] LANE COUNTY CORNER REPORT NO. 14352 BY WILLIAM D. ROBINSON, P.L.S., DATED AUGUST 7, 2003. *FOUND A 2-1/2" GLO BRASS CAP MARKED "1/4 S10 S11 1940" ATOP A 1" IRON PIPE, SET FLUSH TO THE SURFACE. ACCEPTED THE FOUND BRASS CAP AS MARKING THE CORNER POSITION. FOUND FIR 21" DIA WITH HEALED FACE BEARS S17°48'E, 9.97 FEET TO FACE, 10.8 FEET TO CENTER, AND 6.5 FEET TO A PINK MAGNET. FOUND FIR 18" DIA WITH HEALED FACE BEARS S77°W, 25.23 FEET TO FACE, 26.2 FEET TO CENTER, AND 14.4 FEET TO AN ORANGE MAGNET. SET A HEMLOCK 13" DIA, BLAZED AND SCRIBED "CSBT", BEARS N21°46'E, 14.81 FEET TO FACE, 15.3 FEET TO CENTER, AND 8.6 FEET TO A SILVER MAGNET. SET A FIR 15" DIA, BLAZED AND SCRIBED "CSBT", BEARS N65°01'W, 20.80 TO FACE, 21.0 FEET TO CENTER, AND 17.1 FEET TO A BLUE MAGNET. DISTANCE TO FACE REFERS TO A PK NAIL AND BRASS WASHER DRIVEN INTO THE BOTTOM OF THE FACE OF NEW BEARING TREES, OR IN A NOTCH JUST BELOW THE HEALED BLAZE IN FOUND BEARING TREES.*

NOTES:

THIS IS A MICROSOFT WORD 2000 DOCUMENT NAMED "57500540" CREATED FROM A BOILER PLATE DOCUMENT NAMED "HISTORY", WHICH HAS A STYLESHEET NAMED "CORNER" ATTACHED TO IT.

FIRM/AGENCY: BENTON COUNTY SURVEYOR'S OFFICE
ADDRESS: 360 S.W. AVERY AVE., CORVALLIS, OR 97333; PH. 541-766-6821
RESEARCH BY: BERNARD S. ALTENBACH, ENGINEER/SURVEY TECH.
DATA ENTRY BY: SAME

BENTON COUNTY CORNER RESTORATION FORM, PAGE 1 OF 2, 157500540R3**SEE CORNER HISTORY FORM FOR RECORDS ETC.**

CORNER RESTORATION FIELD BOOK NUMBER 35 PAGE(S) 20-21 DATE 09/03/2024
TOWNSHIP 15 SOUTH, RANGE 7 WEST, WILLAMETTE MERIDIAN; SECTION 10 CORNER EAST 1/4
DONATION LAND CLAIM N/A CORNER N/A
CONDITION REPORT ; REFERENCED OUT X; RENEWED ; SURVEYED IN

LOCATION AND COMMENTS:

CORNER IS LOCATED ON A GENTLE SOUTHWEST FACING SLOPE IN AN AREA OF ±15 YEAR OLD D. FIR REPROD TO THE EAST AND ±60 YEAR OLD D. FIR TO THE WEST. TO REACH CORNER FROM THE INTERSECTION OF ALPINE ROAD WITH NICHOLS ROAD, BEING THE START OF THE BLM SOUTH FORK ROAD, TRAVEL WESTERLY ALONG BLM SOUTH FORK ROAD FOR 5.48 MILES TO THE I. P. MILLER ROAD ON THE RIGHT. CONTINUE ALONG BLM SOUTH FORK ROAD FOR 0.10 MILES TO A TIMBER ACCESS ROAD ON THE LEFT AND TURN LEFT. FOLLOW FOR 0.39 MILES TO A WYE, STAY LEFT FOR 0.03 MILES TO A WYE, STAY RIGHT FOR 0.67 MILES TO A WYE, STAY LEFT FOR 0.45 MILES TO A WYE, STAY LEFT FOR 0.28 MILES TO A WYE, STAY RIGHT FOR 0.36 MILES TO A WYE, STAY LEFT FOR 0.83 MILES TO A WYE, STAY LEFT FOR 0.79 MILES TO A WYE, STAY LEFT FOR 0.18 MILES TO A WYE, STAY RIGHT FOR 0.40 MILES TO A BLAZED LINE RUNNING EAST-WEST AND PARK. WALK EAST ABOUT 130 FEET TO THE CORNER. CORNER IS POOR FOR GPS CONTROL.

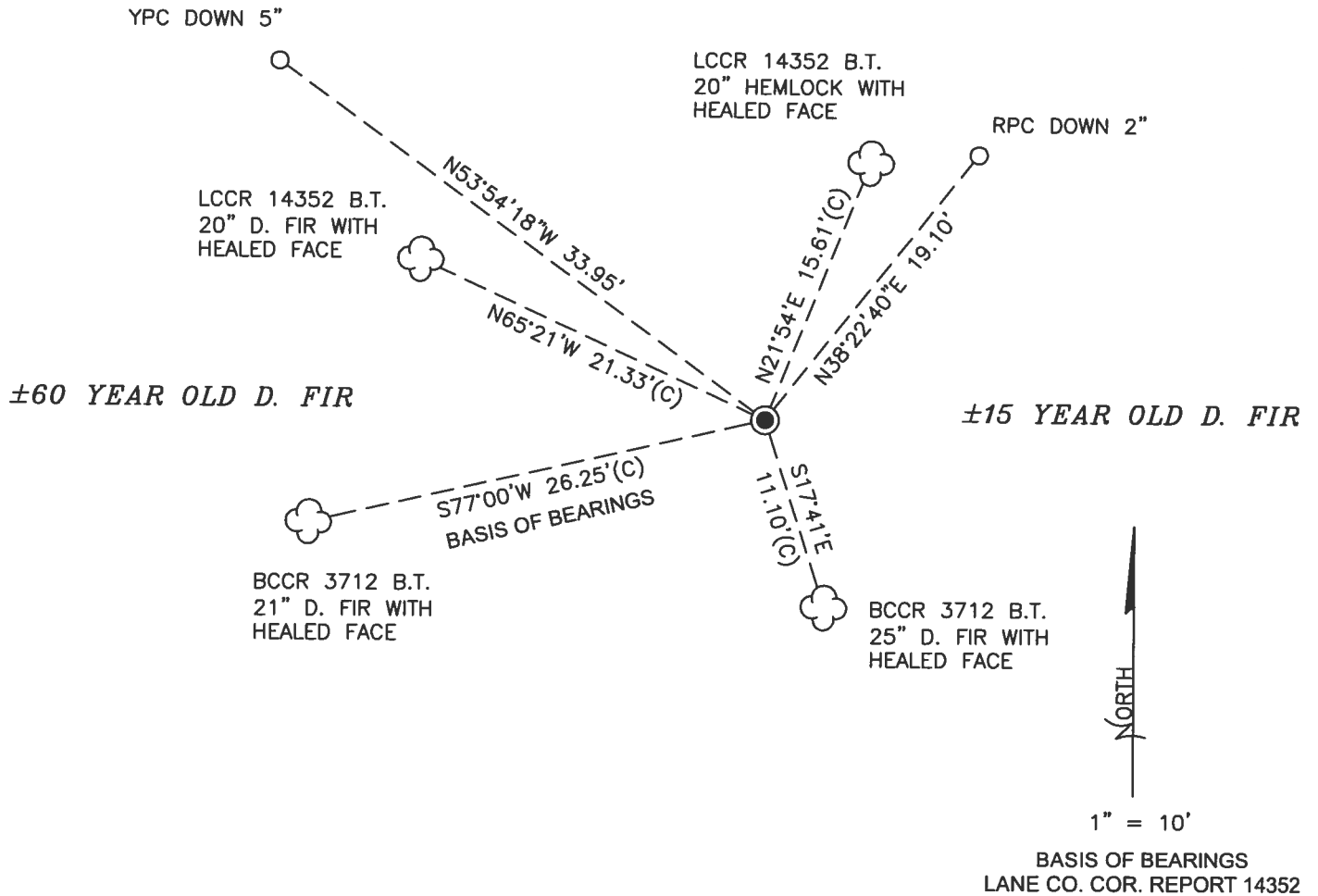
MONUMENTS AND ACCESSORIES FOUND (CONDITION AND SOURCE):

1. FOUND 2-1/2" BRASS CAP MARKED AS SHOWN ON PAGE 2 OF 2, ON 1" IRON PIPE, FLUSH WITH GROUND SURFACE, FIRMLY SET AND UNDISTURBED, FOR THE CORNER.
(SET HEMLOCK POST 3 FEET LONG, 3" SQUARE, 24" IN THE GROUND, MARKED "1/4S" ON WEST FACE AS PER RECORD [01]).
(FOUND BADLY DECAYED REMAINS OF A WOODEN STAKE, SHOWING PARTIAL SCRIBE MARKS. SET AN IRON POST, 3 FEET LONG, 1" DIA, 28" IN THE GROUND WITH THE MARKED STAKE DEPOSITED AT THE BASE, WITH BRASS CAP MARKED "1/4 S10 S11 1940" AS PER RECORD [02]).
(FOUND 1940 GLO MONUMENT TIPPED TO THE SOUTH AND BURIED UNDER THE ROOT OF A HEMLOCK STUMP. RESET 1940 GLO MONUMENT IN ITS ORIGINAL POSITION AS PER RECORD [03]).
(FOUND A 2-1/2" GLO BRASS CAP MARKED "1/4 S10 S11 1940" ATOP A 1" IRON PIPE, SET FLUSH TO THE SURFACE. ACCEPTED THE FOUND BRASS CAP AS MARKING THE CORNER POSITION AS PER RECORD [05]).
2. FOUND D. FIR 21" DIA WITH HEALED FACE BEARS S77°00'W, 26.25 FEET TO CENTER. **HELD FOR BASIS OF BEARINGS FOR THIS RESTORATION.** SET ALUMINUM NAIL AND PLASTIC WASHER IN SOUTHEASTERLY BASE FOR DISTANCE MEASUREMENT.
(D. FIR 16" DIA BEARS S77°W, 26.2 FEET, MARKED "1/4S10BT" AS PER RECORD [03]).
(FOUND FIR 18" DIA WITH HEALED FACE BEARS S77°W, 25.23 FEET TO FACE TO A PK NAIL AND BRASS WASHER DRIVEN IN A NOTCH JUST BELOW THE HEALED BLAZE, 26.2 FEET TO CENTER, AND 14.4 FEET TO AN ORANGE MAGNET AS PER RECORD [05]).
3. FOUND D. FIR 25" DIA WITH HEALED FACE BEARS S17°41'E, 11.10 FEET TO CENTER. SET ALUMINUM NAIL AND PLASTIC WASHER IN SOUTHWESTERLY BASE FOR DISTANCE MEASUREMENT.
(D. FIR 17" DIA BEARS S18°E, 11.0 FEET, MARKED "1/4S11BT" AS PER RECORD [03]).
(FOUND FIR 21" DIA WITH HEALED FACE BEARS S17°48'E, 9.97 FEET TO FACE TO A PK NAIL AND BRASS WASHER DRIVEN IN A NOTCH JUST BELOW THE HEALED BLAZE, 10.8 FEET TO CENTER, AND 6.5 FEET TO A PINK MAGNET AS PER RECORD [05]).
4. FOUND HEMLOCK 20" DIA WITH HEALED FACE BEARS N21°54'E, 15.61 FEET TO CENTER. SET ALUMINUM NAIL AND PLASTIC WASHER IN SOUTHEASTERLY BASE FOR DISTANCE MEASUREMENT.
(SET A HEMLOCK 13" DIA, BLAZED AND SCRIBED "CSBT", BEARS N21°46'E, 14.81 FEET TO FACE TO A PK NAIL AND BRASS WASHER DRIVEN INTO THE BOTTOM OF THE FACE, 15.3 FEET TO CENTER, AND 8.6 FEET TO A SILVER MAGNET AS PER RECORD [05]).
5. FOUND D. FIR 20" DIA WITH HEALED FACE BEARS N65°21'W, 21.33 FEET TO CENTER. SET ALUMINUM NAIL AND PLASTIC WASHER IN SOUTHWESTERLY BASE FOR DISTANCE MEASUREMENT.
(SET A FIR 15" DIA, BLAZED AND SCRIBED "CSBT", BEARS N65°01'W, 20.80 FEET TO FACE TO A PK NAIL AND BRASS WASHER DRIVEN INTO THE BOTTOM OF THE FACE, 21.0 FEET TO CENTER, AND 17.1 FEET TO A BLUE MAGNET AS PER RECORD [05]).

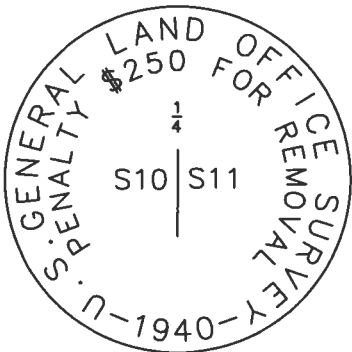
MONUMENT SET (PROCEDURES AND DESCRIPTION):

FOUND 2-1/2" BRASS CAP MARKED AS SHOWN ON PAGE 2 OF 2, ON 1" IRON PIPE, FLUSH WITH GROUND SURFACE, FIRMLY SET AND UNDISTURBED, FOR THE CORNER. THE BRASS CAP AND IRON PIPE WERE RESET IN 1989 BY STEVEN P. NESS, P.L.S.. THE BRASS CAP AND IRON PIPE WERE ORIGINALLY SET IN 1940 BY NORMAN D. PRICE, CADASTRAL ENGINEER, AND OSKAR T. DAUELSBERG, PUBLIC LAND SURVEYOR, IN PLACE OF THE BADLY DECAYED REMAINS OF THE ORIGINAL WOOD STAKE SET IN 1897 BY EDWARD F. SHARP, D.S.. STEVEN P. NESS FOUND NO EVIDENCE OF THE ORIGINAL BEARING TREES, AND DID NOT EXPLAIN THE METHOD USED TO DETERMINE THE ORIGINAL PIPE POSITION OTHER THAN TO STATE THE MONUMENT WAS TIPPED TO THE SOUTH AND BURIED UNDER THE ROOT OF A HEMLOCK STUMP. SOME OF THE OTHER PIPES FOUND IN THE AREA THAT WERE SET IN 1940 BY PRICE AND DAUELSBERG WERE FOUND WITH FLARED BOTTOMS WHICH RESIST MOVEMENT. IT IS LIKELY THAT THE POSITION WAS DETERMINED BY USING THE BOTTOM OF THE IRON PIPE. NESS STATES THAT THE MONUMENT AS RESET IS S68°11'E 0.75 FEET OF THE CALCULATED PROPORTION POINT. THE MONUMENT AS RESET BY NESS WAS ACCEPTED AS MARKING THE CORNER POSITION BY LANE COUNTY AND IS THEREFORE ACCEPTED AS THE PERPETUATION OF THE CORNER POSITION.

SET TWO NEW IRON ROD ACCESSORIES AS SHOWN ON PAGE 2 OF 2. FOUND ORANGE FIBERGLASS "PROPERTY BOUNDARY" POST 8" SOUTH OF BRASS CAP.



MONUMENT DETAIL



2-1/2" BRASS CAP

LEGEND

- SET 5/8" X 30" REBAR WITH PLASTIC CAP
- YPC YELLOW PLASTIC CAP MARKED "BENTON COUNTY SURVEYOR"
- RPC RED PLASTIC CAP MARKED "BENTON COUNTY SURVEYOR"
- (C) MEASUREMENT TO CENTER
- GOVERNMENT MONUMENT FOUND AS SHOWN
- LCCR LANE COUNTY CORNER REPORT
- BCCR BENTON COUNTY CORNER RESTORATION
- B.T. BEARING TREE
- ☁ BEARING TREE AS NOTED

NEW ACCESSORIES:

1. SET REBAR (SEE LEGEND) N38°22'40"E, 19.10 FEET AND 2 INCHES BELOW GROUND LEVEL.
2. SET REBAR (SEE LEGEND) N53°54'18"W, 33.95 FEET AND 5 INCHES BELOW GROUND LEVEL.

NOTES:

COMPASS DECLINATION IS 15' EAST. ALL MEASURED DISTANCES AND BEARINGS ARE TO THE CENTER OF THE OBJECT, UNLESS OTHERWISE NOTED. ALL LIVE BEARING TREES ARE PAINTED AND HAVE A B.T. TAG ATTACHED, FACING THE CORNER UNLESS OTHERWISE NOTED. ALL NEW BEARING TREES HAVE A PLASTIC WASHER (STAMPED "SURVEY MARKER DO NOT REMOVE") ATTACHED BY AN ALUMINUM NAIL TO THE SIDE CENTER OF THE TREE FOR DISTANCE MEASUREMENT, UNLESS OTHERWISE NOTED.

THIS RESTORATION WAS PERFORMED AT THE DIRECTION AND APPROVAL OF THE BENTON COUNTY SURVEYOR *[Signature]*

REGISTERED
PROFESSIONAL
LAND SURVEYOR

9/23/24 *[Signature]*

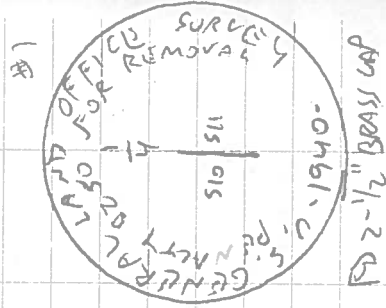
FIRM/AGENCY: BENTON COUNTY SURVEYOR'S OFFICE
 ADDRESS: 360 S.W. AVERY AVE., CORVALLIS, OR 97333; PH. 541-766-6821
 PRESENT: DAVID L. MALONE, P.L.S., AND IAN T. MCGUIRE, P.L.S.
 EQUIPMENT: NIKON NIVO3.C WITH SURVEY PRO ONBOARD.

OREGON
 JANUARY 12, 1999
 DAVID L. MALONE
 51523

RENEWAL DATE: 12/31/24

REFERENCE T 155 RTW 10/11
114

FD 2-1/2" BRASS CAP ON 1" IRON ROD WITH
GROUND SURFACE FAMILY SET & UNDISTURBED
DORADO FIRMING GLASS "PROPERTY BOUNDARY"
POST 8" SOUTH OF BRASS CAP FD 2 (BTS)
FOR BENTON CO. (OR REST 3712 AND HEAD)
S/W FOR BASIS OF SURVEYING, FD 2 (BTS)
PER LAND CO. CORNER REPORT 147352.
SET 2 NEW IRON ROD ACCESSORIES.

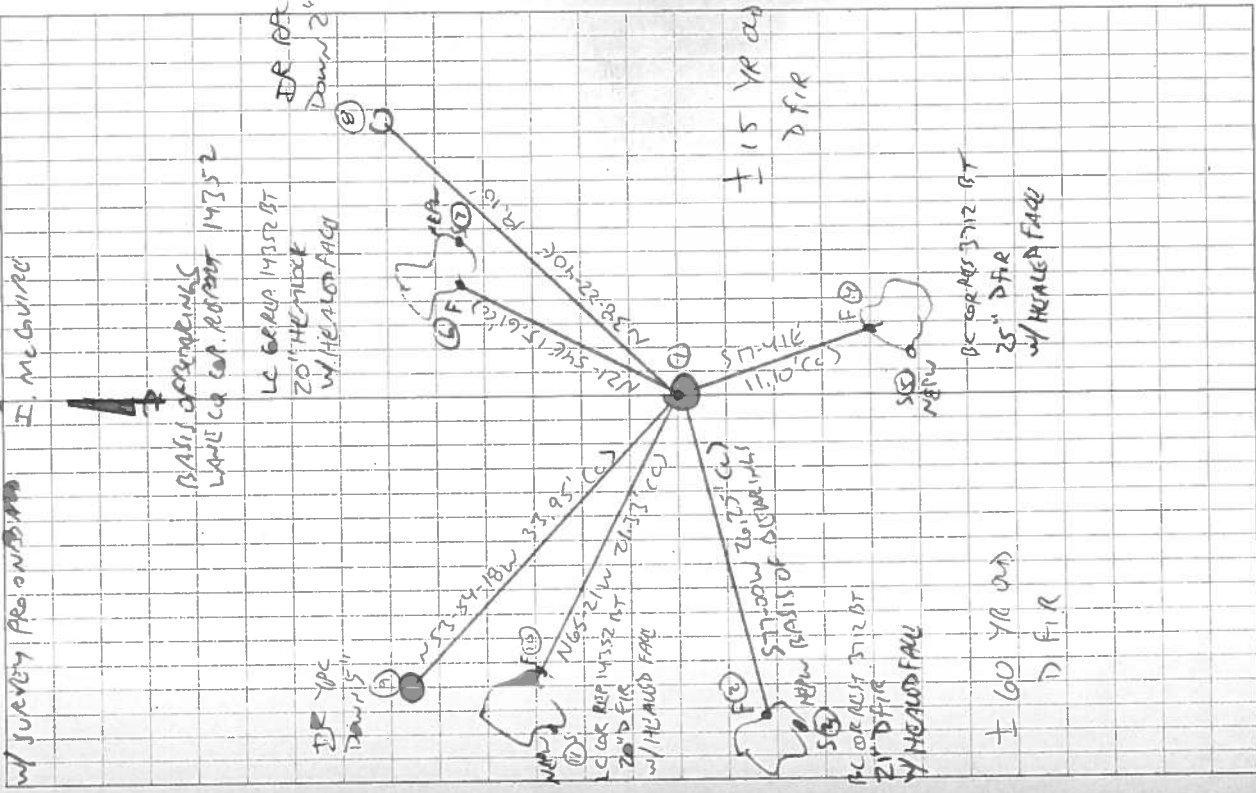


IR = 5/16" X 30" IRON ROD
YR OR RPC = YELLOW OR RED
PLASTIC CAP MARKERS
"NEWTON COUNTY SURVEY"
NERW = NAIL & PLASTIC WASHOR
MARKED "SURVEY MARKER"
DO NOT REMOVE
FD 2-1/2" BRASS CAP

WASH. CO. STATE
NIKON NIVOIC

9/10/24

35/21



Rate in the Rain

CORNER REPORT

THE QUARTER CORNER COMMON TO SECTIONS 10 AND 11, T15S, R7W, W.M.

DATE	1897	1940	1989
SURVEYOR	E. SHARP	N. PRICE	S. NESS
SOURCE	GLO VOL R-412	GLO VOL R-558	RE 11512
MONUMENT FOUND		DECAYED WOOD POST REMAINS WITH MARKS	1940 GLO MONUMENT LEANING UNDER STUMP
MONUMENT SET	3" x 3" x 36" HEMLOCK POST, 24" DOWN, "1/4S" ON WEST FACE	1" x 36" IRON POST WITH BRASS CAP, RESET WOOD BELOW	"RESET GLO MONUMENT IN ITS ORIGINAL POSITION"
FOOTNOTE			1
BEARING OBJECT 1	12" HEMLOCK N39°E @ 30 LKS = 19.8' "1/4S BT"	20" HEMLOCK N38-3/4°E @ 29 LKS = 19.1'	NO EVIDENCE
BEARING OBJECT 2	10" HEMLOCK S36°W @ 16 LKS = 10.6' "1/4S BT"	16" HEMLOCK S36-3/4°W @ 16 LKS = 10.6'	NO EVIDENCE
BEARING OBJECT 3			17" D. FIR S18°E @ 11.0' MARKED "1/4 S11 BT"
BEARING OBJECT 4			16" D. FIR S77°W @ 26.2' MARKED "1/4 S10 BT"

BOLDED ENTRY IN CORNER HISTORY CORRESPONDS WITH OBJECTS DESCRIBED IN EVIDENCE RECOVERED. FOOTNOTES: 1) MONUMENT MISSES THE PROPORTION POSITION BY ONLY 0.75'. STUMPS IN THE CORNER AREA HAVE BEEN PUSHED AROUND BY CAT WORK DURING LOGGING 35-40 YEARS PRIOR.

CORNER EVIDENCE

EVIDENCE RECOVERED :

AT THE CORNER POINT FOUND A 2-1/2" GLO BRASS CAP ATOP A 1" IRON PIPE, SET FLUSH TO THE SURFACE.

1989 [3] A 21" FIR WITH A HEALED FACE BRS S17°48'E @ 9.97' TO FACE, 10.8' TO CENTER, AND 6.5' TO A PINK MAGNET (S18°E @ 11.0').

1989 [4] AN 18" FIR WITH A HEALED FACE BRS S77°W @ 25.23' TO FACE, 26.2' TO CENTER, AND 14.4' TO AN ORANGE MAGNET (S77°W @ 26.2').

MONUMENT SET: NOTHING NEEDED. ACCEPTED THE FOUND BRASS CAP AS MARKING THE CORNER POSITION.

ACCESSORIES ESTABLISHED:

2003 [5] A 13" HEMLOCK, BLAZED AND SCRIBED "CSBT" BRS N21°46'E @ 14.81' TO FACE, 15.3' TO CENTER, AND 8.6' TO A SILVER MAGNET.

2003 [6] A 15" FIR, BLAZED AND SCRIBED "CSBT" BRS N65°01'W @ 20.80' TO FACE, 21.0' TO CENTER, AND 17.1' TO A BLUE MAGNET.

NOTES AND OTHER INFORMATION

GEOGRAPHIC MAP LOCATION: USE FOR NAVIGATING TO CORNER AREA - NOT OF SURVEY GRADE ACCURACY.

LATITUDE = N 44°16'53.1" LONGITUDE = W 123°30'46.3" NAD 83/91 VALUES

BASIS OF BEARING: S77°W BASED BETWEEN THE CORNER MONUMENT AND 1989 [4], PER RE 11512.

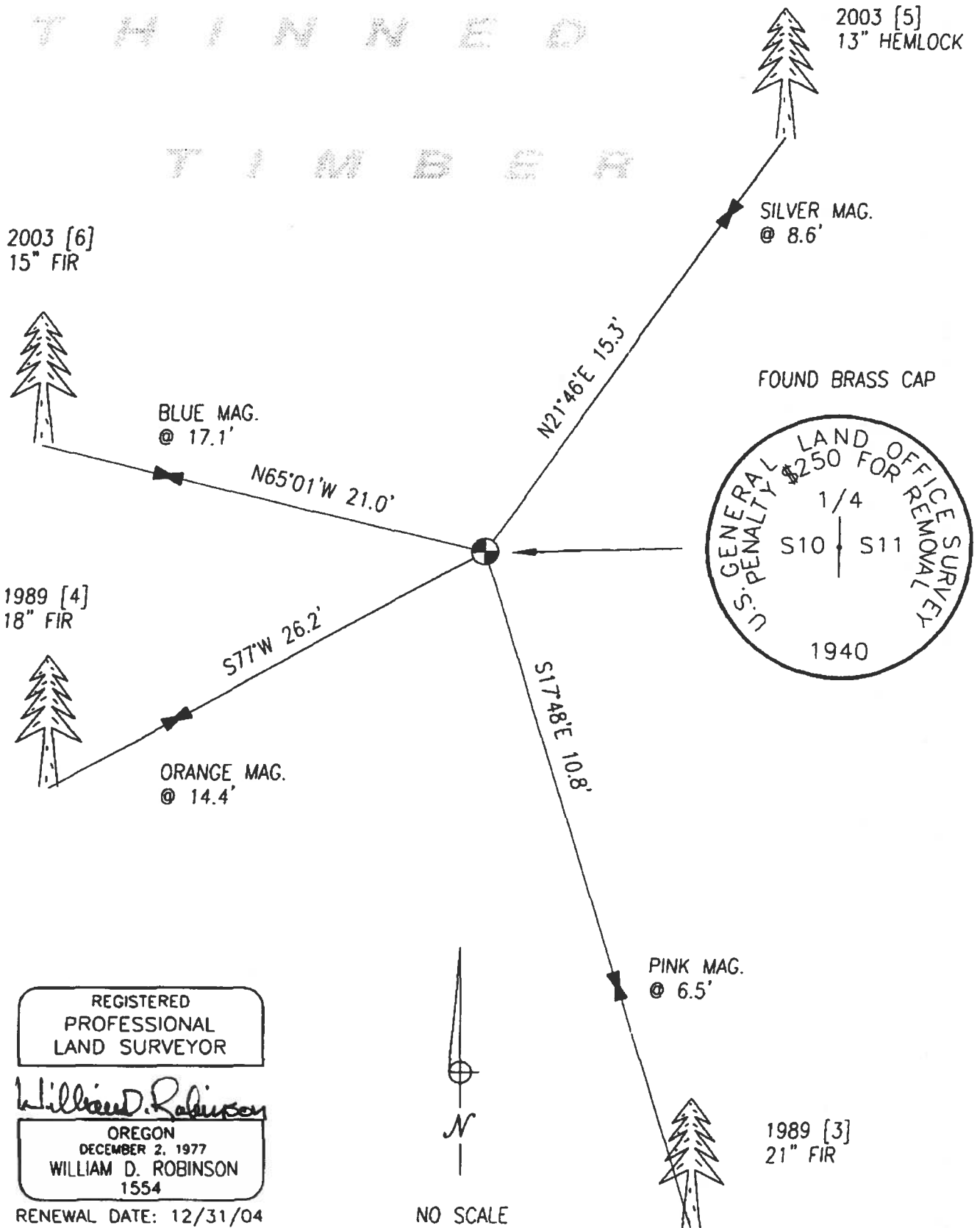
EQUIPMENT USED: WILD TC-1010 TOTAL STATION & HP-48 GX DATA COLLECTOR.

BEARING TREES: DISTANCE TO FACE REFERS TO A P-K NAIL & BRASS WASHER DRIVEN INTO THE BOTTOM OF THE FACE OF NEW BT's, OR IN A NOTCH JUST BELOW THE HEALED BLAZE IN FOUND BT's.

DATE: AUGUST 7, 2003

BY: BRUCE BOTHEL, P.L.S., ASSOCIATE SURVEYOR *BB*
JOHN WISOTSKY, P.L.S., ENGINEERING TECH. I *JW*

THINNED TIMBER



REGISTERED
PROFESSIONAL
LAND SURVEYOR

William D. Robinson

OREGON
DECEMBER 2, 1977
WILLIAM D. ROBINSON
1554

RENEWAL DATE: 12/31/04



NO SCALE

LANE COUNTY
DEPARTMENT OF PUBLIC WORKS

RESTORED CORNER

#11512
INDEX NO. _____

CORNER West 1/4, Section 11, T. 15 S., R. 7 W., W.M.
G.L.O. NOTES DATED: 1940 BY: Price and Dodelberg

CORNER: 1" iron post 3 feet long, 28" in the ground with brass cap.

ACCESSORIES: 20" hemlock, N 38 3/4° E 29 lks. (Old BT)
16" hemlock, S 36 3/4° W 16 lks. (Old BT)

REESTABLISHMENT NOTES DATED: _____ BY: _____

EVIDENCE RECOVERED: _____

CORNER SET: _____

ACCESSORIES ESTABLISHED: _____

REESTABLISHMENT NOTES DATED: _____ BY: _____

EVIDENCE RECOVERED: _____

CORNER SET: _____

ACCESSORIES ESTABLISHED: _____

REESTABLISHMENT NOTES DATED: _____ BY: _____

EVIDENCE RECOVERED: _____

CORNER SET: _____

ACCESSORIES ESTABLISHED: _____

REMONUMENTATION

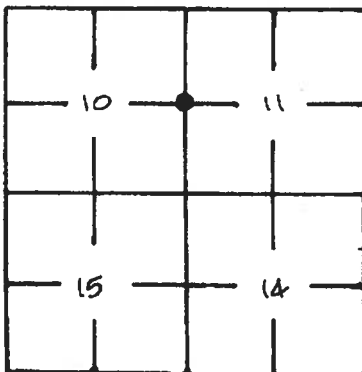
DATE: 11-89 BY: S.P. Ness TITLE: PLS FIRM: Leavitt, Ness & Co.

EVIDENCE RECOVERED: Found 1940 GLO monument tipped to the south and buried under the root of a hemlock stump. I could not find any evidence of the original hemlock BT's. This area was logged 35 to 40 years ago and several stumps in the area were pushed around by tractors.

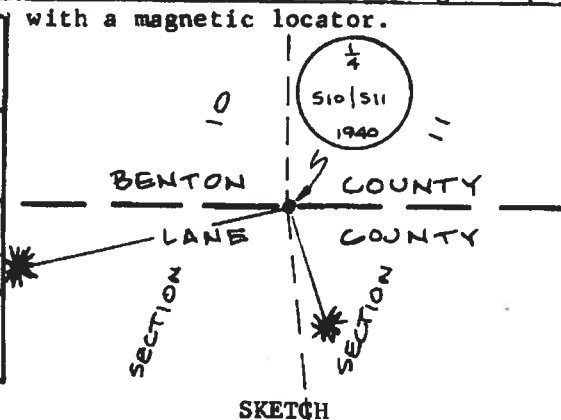
CORNER SET: Reset GLO monument in its original position.

ACCESSORIES ESTABLISHED: 17" D. fir, S 18° E 11.0, marked: 1/4 S11 BT
16" D. fir, S 77° W 26.2, marked: 1/4 S10 BT

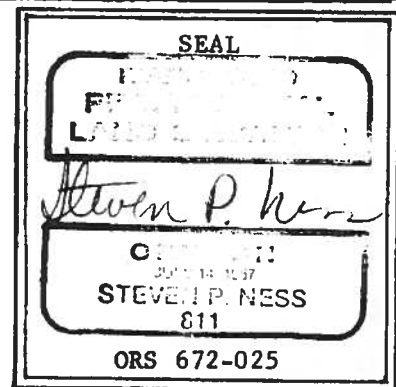
OTHER INFORMATION: This corner is on a gentle South slope about 200' east of BLM road #15-7-10. The monument as reset is S 68° 11' E 0.75 of the calculated proportion point for the corner. I found the monument by establishing the proportion point and listening with a magnetic locator.



SECTION DIAGRAM



SKETCH



BENTON COUNTY CORNER RESTORATION FORM 157500540 3712

SECTION 11 TOWNSHIP 15 S RANGE 7 W DLC _____ CORNER West 1/4
 DATE 11-89 CORNER RESTORATION FIELD BOOK NUMBER _____ PAGE _____

CORNER DESIGNATION: The one-quarter corner between _____ CONDITION REPORT ONLY
 Sections 10 and 11. _____ REFERENCED OUT
 _____ RENEWED
 SURVEYED IN

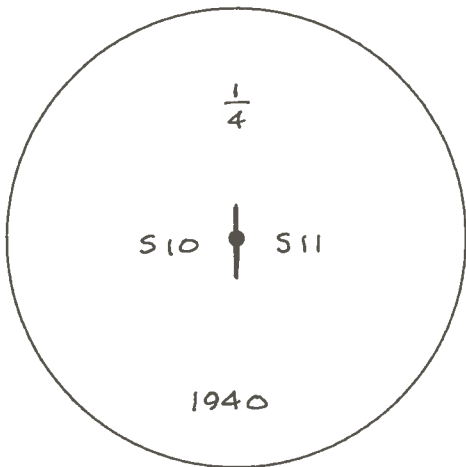
LOCATION AND COMMENTS: The corner is on a gentle South slope about 200' east of BIM road #15-7-10.

PREVIOUS RENEWALS/SURVEYS, ETC: 1940 Dependent Resurvey of T. 15 S., R. 7 W. by Norman D. Price and Oskar Douelsberg. They set 1" x 36" iron post with brass cap in place of a badly decayed wooden stake. They found the original bearing trees of the 1897 GLO survey: 20" hemlock, N 38 3/4° E 29 lks., 16" hemlock, S 36 3/4° W 16 lks.

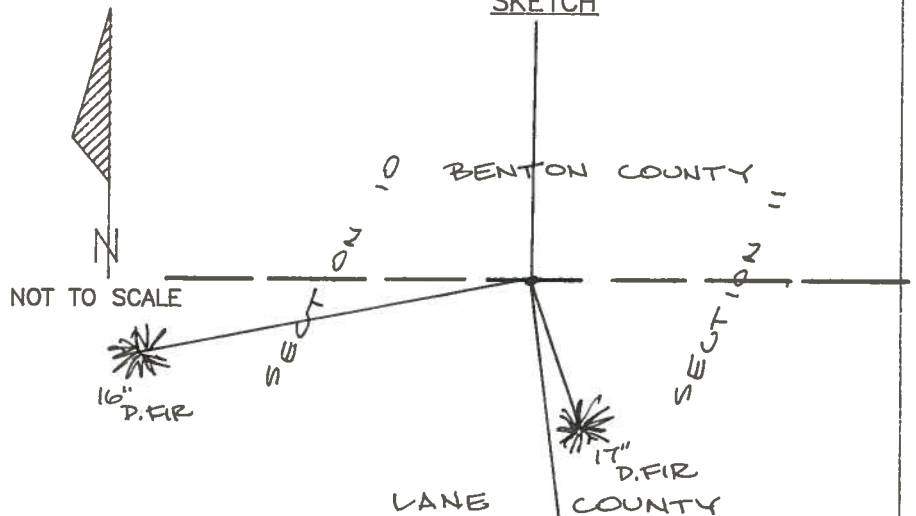
MONUMENTS AND ACCESSORIES FOUND (CONDITION AND SOURCE):

Found 1940 GLO monument tipped to the south and buried under the root of a hemlock stump. I could not find any evidence of the original hemlock BT's. This area was logged 35 to 40 years ago and several stumps in the area were pushed around by tractors.

MONUMENT DETAIL



SKETCH



MONUMENT SET (PROCEDURES AND DESCRIPTION):

Reset 1940 GLO monument in its original position. The monument as reset is S 68° 11' E 0.75 of the calculated proportion point for the corner. I found the monument by establishing the proportion point and listening with a magnetic locator.

NEW ACCESSORIES: 17" D.fir, S 18° E 11.0, marked: 1/2 S11 BT
 16" D.fir, S 77° W 26.2, marked: 1/2 S10 BT

REGISTERED
PROFESSIONAL
LAND SURVEYOR

Steven P. Ness

OREGON
JULY 14, 1997
STEVEN P. NESS
811

NOTES:

FIRM/AGENCY: Leavitt, Ness & Co., P.O. Box 298, Springfield, OR 97477
ADDRESS:
PARTY CHIEF: S.P. Ness
CREW: K.R. Leavitt
WITNESS: