

JSP
275

T14S R7W
1452
T15S R7W

CORNER HISTORY		T 15 S, R 7 W		SECTION 2 D.L.C.		CORNER N 44 CORNER		#
NO.	DATE	SOURCE	SURVEYOR	MONUMENTS AND ACCESSORIES		COMMENTS		
①	5/19/1942	ORIG. G.L.O.	OSKAR T. DAUELSBERG	SET 1 POST & D.C. @ 2 FIR B.T.'S				1
								2
②	8/31/1956	CS # 2815	RALPH BARNES	MONUMENT FOUND				3
								4
								5
								6
								7
								8
								9
								10
								11
								12
								13
								14
								15
								16
								17
								18
								19
								20
								21
								22
								23
								24
								25
								26
								27
								28
								29
								30
								31

**BENTON COUNTY CORNER RESTORATION FORM, PAGE 1 OF 1
SEE CORNER HISTORY FORM FOR RECORDS, ETC.**

CORNER RESTORATION FIELD BOOK NO. _____ PAGE _____ DATE 2-16-95
TOWNSHIP 15 SOUTH, RANGE 7 WEST, W. M. SECTION 2 CORNER N1/4
DONATION LAND CLAIM _____ CORNER _____
CONDITION REPORT _____ REFERENCED OUT _____ RENEWED XX SURVEYED IN _____

LOCATION AND COMMENTS:

FROM THE JUNCTION OF BLM ROAD 14-7-35 AND THE BLM MAINLINE, DRIVE SOUTHWEST ON THE MAINLINE FOR 0.3 MILES. THE CORNER LIES AT TOP OF CUT BANK ON NORTH SIDE OF ROAD.

MONUMENTS AND ACCESSORIES FOUND (CONDITION AND SOURCE):

FOUND: NO TRACE OF 1940 GLO BRASS CAP
FOUND: 54" D. FIR STUMP, S23 1/2°E, 41.58 FT. AXE MARKS VISIBLE (54" FIR, S23 1/2°E, 41.58 FT. AS PER RECORD [1]). NAILED BENTON COUNTY BRASS WASHER AT SW SIDE CENTER OF STUMP.
FOUND: 26" D. FIR STUMP, S35°W, 18.5 FT. NO MARKS VISIBLE
GLO CALLS FOR A 28" FIR, S45 1/2°W, 17.82 FT. THIS STUMP IS QUITE POSSIBLY THE GLO BT. BUT WITH NO MARKS AND THE BEARING OFF BY 10° WE DID NOT USE AS A BT.
FOUND: 1940 GLO BRASS CAP, S1/4 CORNER SECTION 35, T14S, R7W, S89°02'E, 90.78 FT., (N89°11'E, 91.08 FT. AS PER RECORD [1]).

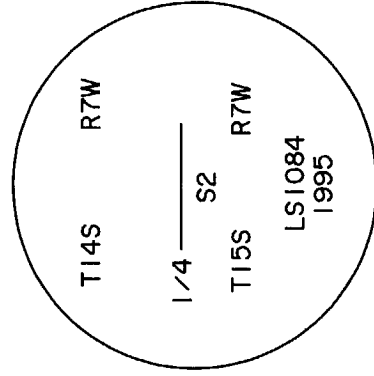
MONUMENT SET (PROCEDURES AND DESCRIPTION):

SET: 2" INSIDE DIAMETER X 30" LONG GALVANIZED IRON PIPE, WITH 2 1/2" BRASS CAP, FOR THE CORNER, STAMPED AS SHOWN. CORNER WAS SET AT RECORD BEARING AND DISTANCE (AS PER RECORD [01]) FROM THE CENTER OF THE SE BT.

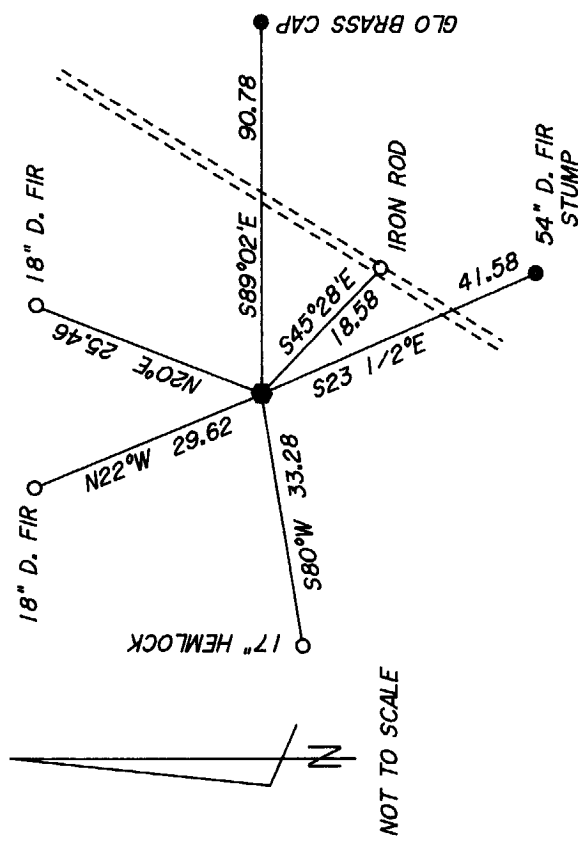
NEW ACCESSORIES:

SET: 17" HEMLOCK, S80°W, 33.28 FT. (TO SPIKE IN SOUTH SIDE) MARKED: "1/4 S2 BT"
SET: 18" D. FIR, N22°W, 29.62 FT. (TO SPIKE IN NE SIDE) MARKED: "X BT"
SET: 18" D. FIR, N20°E, 25.46 FT. (TO SPIKE IN NW SIDE) MARKED: "X BT"
SET: 5/8" X 30" IRON ROD WITH PLASTIC CAP (LS1084), S45°28'E, 18.58 FT. (ROD IS SET IN CENTER OF GRAVEL ROAD 6" BELOW SURFACE)
SET: ORANGE FIBERGLASS "SURVEY MARKER" POST 0.5 FT. EAST OF CAP

MONUMENT DETAIL



SKETCH



2 1/2" BRASS CAP

NOTES:

BASIS OF BEARINGS IS A SOLAR OBSERVATION. ALL MEASURED BEARINGS AND DISTANCES ARE TO THE CENTER OF THE OBJECT. ALL NEW BEARING TREES ARE PAINTED (WITH A 6" BAND), HAVE A BT TAG ATTACHED, AND HAVE A BRASS WASHER ATTACHED WITH A 6" SPIKE TO THE SIDE CENTER OF THE TREE. BRASS WASHERS ARE STAMPED "BENTON COUNTY SURVEYOR".

FIRM/AGENCY:

PETERSON & ASSOCIATES

ADDRESS:

8155 NW MITCHEL DR - CORVALLIS, OR

SURVEYOR:

JIM S. PETERSON PH. 757-1794

SURVEY CREW:

J. COLTER HESSEL

REGISTERED
PROFESSIONAL
LAND SURVEYOR

OREGON
JULY 31, 1976
JIM S. PETERSON
1084

EXPIRES: 12-31-96

TOWNSHIP 15 SOUTH, RANGE 7 WEST, WILLAMETTE MERIDIAN; SECTION 02 CORNER N 1/4
DONATION LAND CLAIM _____ CORNER _____

COMMON CORNER(S):

UPDATES AND REVISIONS:

CORNER RECORDS (PREVIOUS RENEWALS, SURVEYS, ETC.)

- [01] ORIGINAL GLO SURVEY BY OSKAR T. DAUELSBERG DATED MAY 19, 1942.
- [02] COUNTY SURVEY NO. 2815 BY RALPH BARNES DATED AUGUST 31, 1956.

COMMENTS/LOCATION/ETC:

NOTES:

THIS IS A MICROSOFT WORD (VERSION 5.0) DOCUMENT NAMED "57540700" CREATED FROM A BOILER PLATE DOCUMENT NAMED "HISTORY", WHICH HAS A STYLESHEET NAMED "CORNER" ATTACHED TO IT.

FIRM/AGENCY: BENTON COUNTY SURVEYOR'S OFFICE
ADDRESS: 360 S.W. AVERY AVE. CORVALLIS OR 97333; PH. 757-6821
RESEARCH BY: CURTIS J. LIESENFELT/MARK E. ANDERSON
DATA ENTRY BY: COLETTE MONACO