

157700640

CORNER FILE TRACKING

S:\Survey Corners\CORNERS\Templates\Filetrac2.doc
10/04/2010

CORNER NUMBER
157700640

STEP	HISTORY	RESTORATION
Form Prepared, DB	01/12/17	7/29/24
Field Inspection, DB	7/24/24	7/24/24
Finish index (count unit)	01/12/17	7/24/24
Counter Index	7/24/24	7/24/24
GIS Index Form	7/24/24	7/24/24
Checked, DB	7/29/24	7/29/24
Form Edited, DB	7/30/24	7/30/24
Form Signed, DB	7/30/24	7/30/24
Authorize Payment, DB	—	—
Archive Digital Files	7/30/24	7/30/24
Collect Documents	7/30/24	7/30/24
PDF File	7/30/24	7/30/24
Copy For Filming	7/30/24	7/30/24
Scanned (pdf to laserfiche)	7/30/24	7/30/24
Filmed (Archived), DB		
Filed, DB		

(DB) = Entry needed in database (Access).

COMMENTS:

DATE 01/12/2017TOWNSHIP 15 SOUTH, RANGE 7 WEST, WILLAMETTE MERIDIAN; SECTION 1 CORNER EAST 1/4
DONATION LAND CLAIM N/A CORNER N/A**COMMON CORNER(S):**

POINT ON WEST LINE OF SECTION 6, TOWNSHIP 15 SOUTH, RANGE 6 WEST

RECORDS (INFORMATION IN BOLD ITALICS IS COUNTY STAFFS' INTERPRETATION OF THE RECORD)

BASED ON EXTENSIVE RESEARCH AND RECOVERY OF EVIDENCE, THIS OFFICE HAS DETERMINED THAT MOST GENERAL LAND OFFICE SURVEYORS IN BENTON COUNTY BEFORE 1890 MEASURED TO THE FACE OF BEARING TREES.

- [01] GENERAL LAND OFFICE (GLO) NOTES BY NORMAN D. PRICE, CADASTRAL ENGINEER, AND OSKAR T. DAUELSBERG, PUBLIC LAND SURVEYOR, DATED SEPTEMBER 16, 1940. *PROPORTIONATE POINT FOR 1/4 SECTION CORNER OF SECTION 1 ONLY. SET AN IRON POST, 3 FEET LONG, 1" DIA, 28" IN THE GROUND, WITH BRASS CAP MARKED "1/4 S1 1940" FROM WHICH A FIR 30" DIA BEARS N47°W, 74 LINKS (48.84 FEET), MARKED "1/4 S1 BT"; A FIR 36" DIA BEARS S42°W, 65 LINKS (42.90 FEET), MARKED "1/4 S1 BT". POINT FOR 1/4 SECTION CORNER OF SECTION 6 ONLY, TOWNSHIP 15 SOUTH, RANGE 6 WEST, BEARS SOUTH, 3.34 CHAINS (220.44 FEET).*
- [02] BENTON COUNTY CORNER RESTORATION NO. 157700640R1 BY CURTIS J. LIESENFELT, P.L.S., DATED JUNE 6, 1996. *NO EVIDENCE OF THE ORIGINAL MONUMENT WAS FOUND. FOUND PARTLY ROTTED D. FIR STUMP 38" DIA (GLO BT) WITH A HEALED FACE, BEARS N46°W, 48.84 FEET. SET 5-1/2" SPIKE AND BRASS WASHER STAMPED "BENTON COUNTY SURVEYOR" (BCBW) IN THE SOUTHWESTERLY BASE. FOUND PARTLY ROTTED D. FIR STUMP 44" DIA (GLO BT) WITH HEALED FACE, BEARS S45°W, 42.90 FEET. SET 5-1/2" SPIKE AND BCBW IN THE SOUTHEASTERLY BASE. THE CORNER FALLS IN THE ROOT BASE ON THE NORTHERLY SIDE OF A 7" D. FIR. SET AN ALUMINUM NAIL AND PLASTIC WASHER FOR A TEMPORARY MONUMENT AT THE RECORD DISTANCES FOR THE RECOVERED BEARING TREES. GIRDLING THE TREE. SET 5/8" X 30" REBAR WITH YELLOW PLASTIC CAP STAMPED "BENTON COUNTY SURVEYOR" (YPC) BEARS N8°13'W, 19.33 FEET. SET 5/8" X 30" REBAR WITH YPC BEARS S84°15'E, 13.80 FEET. SET ORANGE FIBERGLASS "SURVEY MARKER" POST 1 FOOT WESTERLY.*

FIRM/AGENCY: BENTON COUNTY SURVEYOR'S OFFICE
ADDRESS: 360 S.W. AVERY AVE., CORVALLIS, OR 97333; PH. 541-766-6821
RESEARCH BY: DAVID L. MALONE, P.L.S.
DATA ENTRY BY: SAME

BENTON COUNTY CORNER RESTORATION FORM, PAGE 1 OF 2, 157700640R2

SEE CORNER HISTORY FORM FOR RECORDS ETC.

CORNER RESTORATION FIELD BOOK NUMBER 35 PAGE(S) 4-5 DATE 07/24/2024
TOWNSHIP 15 SOUTH, RANGE 7 WEST, WILLAMETTE MERIDIAN; SECTION 1 CORNER EAST 1/4
DONATION LAND CLAIM N/A CORNER N/A
CONDITION REPORT ; REFERENCED OUT ; RENEWED X; SURVEYED IN

LOCATION AND COMMENTS:

CORNER IS LOCATED ON A MODERATE NORTHEAST FACING SLOPE IN AN AREA WITH ±60 YEAR OLD D. FIR MIXED WITH CEDARS AND HEMLOCKS TO THE EAST AND ±30 TO 50 YEAR OLD D. FIR TO THE WEST, ABOUT 100 FEET EAST-NORTHEAST OF THE LANDING AT THE END OF A LOGGING ROAD. TO REACH CORNER FROM THE JUNCTION OF NICHOLS AND BLM SOUTH FORK ROADS, TRAVEL WESTERLY ON BLM SOUTH FORK ROAD FOR 4.50 MILES, TURN LEFT ON FOREST ACCESS ROAD (PASSING THROUGH LOCKED GATE) FOR 0.21 MILES TO A WYE, TURN LEFT FOR 1.11 MILES TO A WYE, STAY LEFT FOR 0.03 MILES TO A WYE, STAY RIGHT FOR 0.02 MILES TO A WYE, STAY RIGHT FOR 0.31 MILES TO A WYE, STAY RIGHT FOR 0.48 MILES TO THE END OF THE ROAD. PARK AND WALK ABOUT 100 FEET EAST-NORTHEAST TO THE CORNER. CORNER IS BAD FOR GPS CONTROL.

MONUMENTS AND ACCESSORIES FOUND (CONDITION AND SOURCE):

1. FOUND 5/8" IRON ROD WITH YELLOW PLASTIC CAP MARKED "BENTON COUNTY SURVEYOR" BEARS S86°08'50"E, 13.80 FEET, UP 2" ABOVE GROUND SURFACE.
(SET 5/8" X 30" REBAR WITH YELLOW PLASTIC CAP STAMPED "BENTON COUNTY SURVEYOR" BEARS S84°15'E, 13.80 FEET AS PER RECORD [02]).
2. FOUND 5/8" IRON ROD WITH YELLOW PLASTIC CAP MARKED "BENTON COUNTY SURVEYOR" BEARS N10°14'50"W, 19.33 FEET, UP 1" ABOVE GROUND SURFACE.
(SET 5/8" X 30" REBAR WITH YELLOW PLASTIC CAP STAMPED "BENTON COUNTY SURVEYOR" BEARS N8°13'W, 19.33 FEET AS PER RECORD [02]).
3. SET 2" GALVANIZED IRON PIPE WITH 3-1/4" BRASS DISK CEMENTED IN THE TOP AT THE WEST 1/4 CORNER OF SECTION 6, TOWNSHIP 15 SOUTH, RANGE 6 WEST, AS PER CORNER RESTORATION 156100640R3, BEARS S0°00'00"E, 220.65 FEET.
HELD FOR BASIS OF BEARINGS FOR THIS RESTORATION.
(POINT FOR 1/4 SECTION CORNER OF SECTION 6 ONLY, TOWNSHIP 15 SOUTH, RANGE 6 WEST, BEARS SOUTH, 3.34 CHAINS [220.44 FEET] AS PER RECORD [01]).
4. FOUND D. FIR STUMP 36" DIA BEARS N47°49'W, 48.83 FEET TO CENTER. OPENED FACE TO ILLEGIBLE SCRIBE MARKS. FOUND NAIL AND BRASS WASHER MARKED "BENTON COUNTY SURVEYOR" IN SOUTHWESTERLY BASE FOR DISTANCE MEASUREMENT.
(FIR 30" DIA BEARS N47°W, 74 LINKS [48.84 FEET], MARKED "1/4 S1 BT" AS PER RECORD [01]).
(FOUND PARTLY ROTTED D. FIR STUMP 38" DIA WITH A HEALED FACE BEARS N46°W, 48.84 FEET. SET 5-1/2" SPIKE AND BRASS WASHER STAMPED "BENTON COUNTY SURVEYOR" IN THE SOUTHWESTERLY BASE AS PER RECORD [02]).
5. FOUND 6 FOOT TALL D. FIR STUMP 49" DIA WITH HEALED FACE BEARS S42°40'W, 42.96 FEET TO CENTER. FOUND NAIL AND BRASS WASHER MARKED "BENTON COUNTY SURVEYOR" IN SOUTHEASTERLY BASE FOR DISTANCE MEASUREMENT.
(FIR 36" DIA BEARS S42°W, 65 LINKS [42.90 FEET], MARKED "1/4 S1 BT" AS PER RECORD [01]).
(FOUND PARTLY ROTTED D. FIR STUMP 44" DIA WITH HEALED FACE BEARS S45°W, 42.90 FEET. SET 5-1/2" SPIKE AND BRASS WASHER STAMPED "BENTON COUNTY SURVEYOR" IN THE SOUTHEASTERLY BASE AS PER RECORD [02]).

MONUMENT SET (PROCEDURES AND DESCRIPTION):

I CALCULATED THE CORNER POSITION BY DISTANCE-DISTANCE INTERSECTION FROM TWO FOUND 5/8" IRON RODS SET IN 1996 BY CURTIS J. LIESENFELT, P.L.S. LIESENFELT CALCULATED THE CORNER POSITION BY DISTANCE-DISTANCE INTERSECTION FROM THE STUMPS OF THE ORIGINAL GENERAL LAND OFFICE BEARING TREES THAT WERE MARKED IN 1940 BY NORMAN D. PRICE, CADASTRAL ENGINEER, AND OSKAR T. DAUELSBERG, PUBLIC LAND SURVEYOR. THERE WAS A 7" D. FIR TREE AT THE CORNER POSITION IN 1996 AND LIESENFELT SET AN ALUMINUM NAIL AND PLASTIC WASHER IN THE ROOT BASE OF THE TREE AND GIRDLED THE TREE. I FOUND THE TREE GONE AND THE NAIL AND BROKEN PLASTIC WASHER LOOSE AT THE CORNER POSITION. THE CALCULATED POSITION IS ACCEPTED AS THE PERPETUATION OF THE ORIGINAL CORNER POSITION.

AT THE CALCULATED POSITION SET A 2" X 31-1/2" GALVANIZED IRON PIPE WITH A 3-1/4" BRASS DISK CEMENTED IN THE TOP, STAMPED AS SHOWN ON PAGE 2 OF 2, UP 4" ABOVE GROUND SURFACE. PLACED ALUMINUM NAIL AND PLASTIC WASHER INSIDE OF IRON PIPE. FOUND ORANGE FIBERGLASS "SURVEY MARKER" POST 1 FOOT WESTERLY OF BRASS DISK. FOUND WHITE FIBERGLASS POST 2" NORTH AND RESET 6" NORTH OF BRASS DISK. SET ONE NEW IRON ROD ACCESSORY AND BLAZED AND SCRIBED ONE NEW BEARING TREE AS SHOWN ON PAGE 2 OF 2.

1940 GLO B.T.
36" D. FIR STUMP
OPENED FACE TO
ILLEGIBLE SCRIBE MARKS

*±60 YEAR OLD D. FIR
WITH CEDARS AND
HEMLOCKS*

FOUND 5/8" IRON ROD
WITH YPC UP 1"
N10°14'50"W 19.33'

16" D. FIR
BLAZED AND
SCRIBED "XBT"

*±30 YEAR OLD
D. FIR*

N62°40'E
25.54'(C)

FOUND 5/8" IRON ROD
WITH YPC UP 2"
S86°08'50"E 13.80'

RPC DOWN 7"

S63°21'55"W 41.55'

S42°40'W 42.96'(C)

1940 GLO B.T.
6' TALL 49" D. FIR STUMP
WITH HEALED FACE

S0°00'00"E 220.65'
BASIS OF BEARINGS



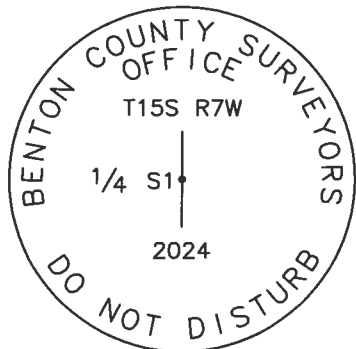
1" = 20'
BASIS OF BEARINGS
1940 GLO

*±50 YEAR OLD
D. FIR*

*±60 YEAR OLD D. FIR
WITH CEDARS AND
HEMLOCKS*

MONUMENT DETAIL

LEGEND



3-1/4" BRASS DISK

SET 2" GALVANIZED IRON
PIPE WITH 3-1/4"
BRASS DISK AT THE
WEST 1/4 OF SECTION
6, TOWNSHIP 15 SOUTH,
RANGE 6 WEST, AS PER
CORNER RESTORATION
156100640R3

- SET 5/8" X 30" REBAR WITH PLASTIC CAP
- YPC YELLOW PLASTIC CAP MARKED "BENTON COUNTY SURVEYOR"
- RPC RED PLASTIC CAP MARKED "BENTON COUNTY SURVEYOR"
- FOUND MONUMENT AS NOTED
- (C) MEASUREMENT TO CENTER
- ⊙ GOVERNMENT MONUMENT SET AS SHOWN
- GLO GENERAL LAND OFFICE
- B.T. BEARING TREE
- BEARING TREE STUMP AS NOTED
- ☁ BEARING TREE AS NOTED

NEW ACCESSORIES:

1. SET REBAR (SEE LEGEND) S63°21'55"W, 41.55 FEET AND 7 INCHES BELOW GROUND LEVEL.
2. D. FIR 16" DIA BEARS N62°40'E, 25.54 FEET TO CENTER, FACE SCRIBED "XBT". SET ALUMINUM NAIL AND PLASTIC WASHER IN SOUTHEASTERLY BASE FOR DISTANCE MEASUREMENT.

NOTES:

COMPASS DECLINATION IS 15' EAST. ALL MEASURED DISTANCES AND BEARINGS ARE TO THE CENTER OF THE OBJECT, UNLESS OTHERWISE NOTED. ALL LIVE BEARING TREES ARE PAINTED AND HAVE A B.T. TAG ATTACHED, FACING THE CORNER UNLESS OTHERWISE NOTED. ALL NEW BEARING TREES HAVE A PLASTIC WASHER (STAMPED "SURVEY MARKER DO NOT REMOVE") ATTACHED BY AN ALUMINUM NAIL TO THE SIDE CENTER OF THE TREE FOR DISTANCE MEASUREMENT, UNLESS OTHERWISE NOTED.

THIS RESTORATION WAS PERFORMED AT THE DIRECTION AND APPROVAL OF THE BENTON COUNTY SURVEYOR *[Signature]*

REGISTERED
PROFESSIONAL
LAND SURVEYOR

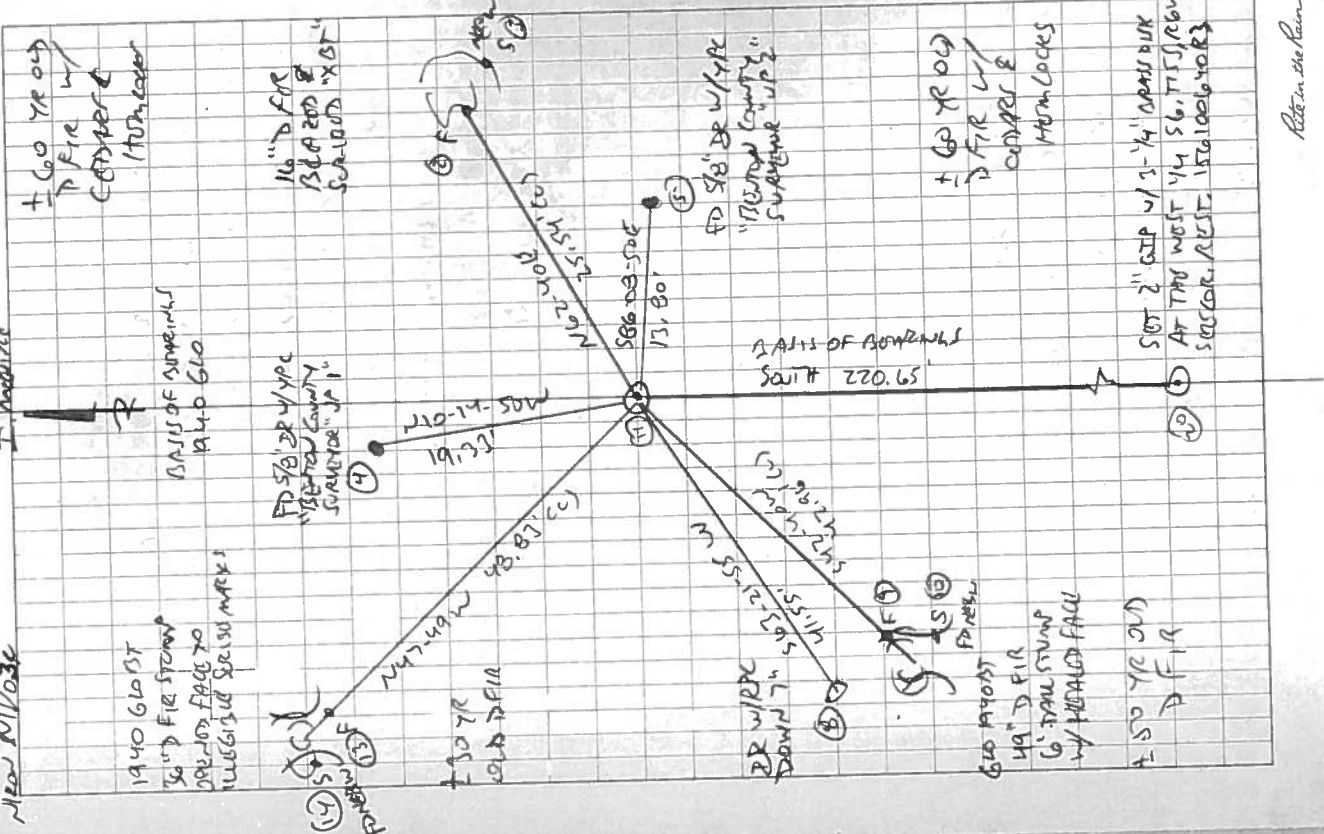
FIRM/AGENCY: BENTON COUNTY SURVEYOR'S OFFICE
ADDRESS: 360 S.W. AVERY AVE., CORVALLIS, OR 97333; PH. 541-766-6821
PRESENT: DAVID L. MALONE, P.L.S., AND IAN T. MCGUIRE, P.L.S.
EQUIPMENT: NIKON NIVO3.C WITH SURVEY PRO ONBOARD.

7/20/24 [Signature]

OREGON
JANUARY 12, 1999
DAVID L. MALONE
51523

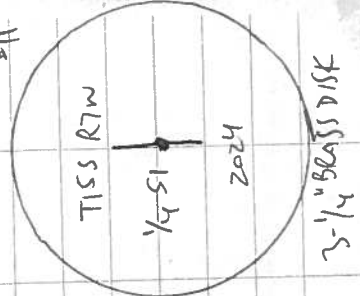
RENEWAL DATE: 12/31/24

7/12/21 B 7/21/21 35/5
 7/21/21 B 7/21/21
 7/21/21 B 7/21/21



Return to the town

4 REMONUMENT TISS RTW E 1/4 S1 +
 157700640
 FD 2 IRON ROD ACCESSORIES AS PER
 157700640 RI, CALCULATED CORNER POSITION
 AT DIST-MIT INTERSECTION. TIED 2 GLO ST
 STUMPS, USING FOUND NAIL BRASS WATHOR FOR
 SIDE CORNER DISTANCE. AT CORNER POSITION SET
 2" x 3 1/2" G.I.P. W/ 3-1/4" BRASS DISK
 COMPUTED IN THE TOP UP 4" ABOVE GROUND SURFACE.
 SET MONUMENT AT CALC'D POSITION OF 156100640
 AND HOLE FOR NAILS OF BENCHMARKS FOR 1940 GLO
 FOUND DRAGON FIREWEISS "SURVEY MARKER" POST IN W/STREET.
 FOUND W/STREET FIREWEISS POST 2" NORTH, RESET 6" NORTH.
 FOUND NAIL AND BRASS PLATE WATHOR ABOVE AT
 POSITION FOR 157700640, PLACED INSIDE OF IRON PIPE.
 SET (NOW IRON ROD ACCESSORY AND STUMP AND
 SURVISED 1 NEW SURVIVING TRIP.



IR = 5/8" x 3/16" IRON ROD
 YPC OR RPC = YELLOW OR RED PLASTIC CAP
 MARKETS "SUTTON COUNTY SURVEYOR"
 NERW = NAIL AND PLASTIC WATHOR MARKED
 "SURVEY MARKER DO NOT REMOVE"
 FT NERW = FOUND NAIL & BRASS WATHOR
 MARKED "SUTTON COUNTY SURVEYOR"

DATE 06-13-96

TOWNSHIP 15 SOUTH, RANGE 7 WEST, WILLAMETTE MERIDIAN; SECTION 01 CORNER E 1/4
DONATION LAND CLAIM _____ CORNER _____

COMMON CORNER(S):

UPDATES AND REVISIONS:

CORNER RECORDS (PREVIOUS RENEWALS, SURVEYS, ETC.)

- [01] ORIGINAL GLO SURVEY BY EDWIN SHARP DATED JULY 18, 1898. *CLOSING CORNER NOT MONUMENTED.*
- [02] B.L.M. SURVEY BY NORMAN PRICE AND OSKAR DAUELSBERG DATED MAY 5, 1942. *SET BRASS CAP WITH 2 FIR BEARING TREES BY SINGLE PROPORTION AGAINST CARDINAL RECORD.*

COMMENTS/LOCATION/ETC:

NOTES:

THIS IS A MICROSOFT WORD (VERSION 5.0) DOCUMENT NAMED "57700640" CREATED FROM A BOILER PLATE DOCUMENT NAMED "HISTORY", WHICH HAS A STYLESHEET NAMED "CORNER" ATTACHED TO IT. INFORMATION IN BOLD ITALICS IS COUNTY STAFFS' INTERPRETATION OF THE RECORD.

FIRM/AGENCY: BENTON COUNTY SURVEYOR'S OFFICE
ADDRESS: 360 S.W. AVERY AVE. CORVALLIS OR 97333; PH. 757-6821
RESEARCH BY: CURTIS J. LIESENFELT/MARK E. ANDERSON
DATA ENTRY BY: ROSE LINDGREN

SEE CORNER HISTORY FORM FOR RECORDS ETC.

CORNER RESTORATION FIELD BOOK NUMBER 16 PAGE(S) 42 DATE 6/06/1996
 TOWNSHIP 15 SOUTH, RANGE 7 WEST, WILLAMETTE MERIDIAN; SECTION 1 CORNER E 1/4
 DONATION LAND CLAIM _____ CORNER _____
 CONDITION REPORT _____; REFERENCED OUT _____; RENEWED XX; SURVEYED IN _____

LOCATION AND COMMENTS:

THE CORNER IS LOCATED ON A HEAVILY WOODED, GENTLY SLOPING, NORTHEASTERLY FACING HILLSIDE AND AT THE TOE OF THE SLOPE OF AN OLD LOGGING ROAD. TO REACH THE CORNER (WITH SMALL OFF ROAD VEHICLES) FOLLOW THE LOGGING ROADS AS SHOWN ON THE GLENBROOK QUADRANGLE MAP TO A SMALL CLEARING AT THE TOP OF THE RIDGE AND THE LOCATION TAG ON THE EASTERLY SIDE OF THE ROAD. THIS CORNER IS UNSUITABLE FOR PREMARKING AND GPS CONTROL.

MONUMENTS AND ACCESSORIES FOUND (CONDITION AND SOURCE):

NO EVIDENCE OF THE ORIGINAL MONUMENT WAS FOUND.
 FOUND: PARTLY ROTTED 38" D. FIR STUMP WITH A HEALED FACE, BEARS N 46° W 48.84 FEET (30", N 47° W 48.84 FEET AS PER RECORD [02]). SET 5 1/2" SPIKE AND BRASS WASHER IN THE SOUTHWESTERLY BASE. SET A BEARING TREE TAG ON TOP.
 FOUND: PARTLY ROTTED 44" D. FIR STUMP WITH HEALED FACE, BEARS S 45° W 42.90 FEET (36", S 42° W 42.90 FEET AS PER RECORD [02]). SET 5 1/2" SPIKE AND BRASS WASHER IN THE SOUTHEASTERLY BASE. SET A BEARING TREE TAG ON THE FACE.
 NO OTHER RECORD EVIDENCE WAS RECOVERED.

MONUMENT SET (PROCEDURES AND DESCRIPTION):

THE CORNER FALLS IN THE ROOT BASE ON THE NORTHERLY SIDE OF A 7" D. FIR. SET AN ALUMINUM NAIL AND PLASTIC WASHER FOR A TEMPORARY MONUMENT AT THE RECORD [02] DISTANCES FROM THE RECOVERED BEARING TREES. GIRDLED THE TREE.

NEW ACCESSORIES:

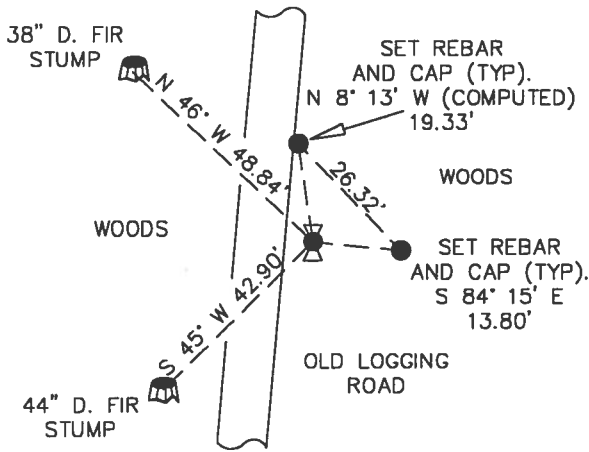
SET: 5/8" REBAR (SEE NOTES), BEARS N 8° 13' W (COMPUTED) 19.33 FEET.
 SET: 5/8" REBAR (SEE NOTES), BEARS S 84° 15' E 13.80 FEET.
 SET: ORANGE FIBERGLASS "SURVEY MARKER" POST 1' WESTERLY.
 SET: LOCATION TAG ON 14" D. FIR ,ON THE EASTERLY SIDE OF GRAVEL ROAD, THE CORNER BEARS N 62° E 185 FEET.

MONUMENT DETAIL

NO BRASS
CAP
WAS SET



SKETCH



NOTES:

COMPASS DECLINATION IS 20° EAST. ALL MEASURED DISTANCES AND COMPASS BEARINGS ARE TO THE CENTER OF THE OBJECT, UNLESS OTHERWISE NOTED. ALL BEARING TREES ARE PAINTED AND HAVE A B.T. TAG ATTACHED, FACING THE CORNER UNLESS OTHERWISE NOTED. ALL NEW BEARING TREES HAVE A BRASS WASHER (STAMPED "BENTON COUNTY SURVEYOR") ATTACHED TO A SIDE CENTER UNLESS OTHERWISE NOTED. ALL LIVE BEARING TREES HAVE A PLASTIC WASHER (STAMPED "BENTON COUNTY SURVEYOR CORNER RESTORATION") ATTACHED TO THE BACK OF THE TREE OPPOSITE THE CORNER UNLESS OTHERWISE NOTED. ALL SET REBAR ARE 5/8" X 30" AND HAVE A YELLOW PLASTIC CAP (STAMPED "BENTON COUNTY SURVEYOR") ATTACHED TO THE TOP.

THIS DOCUMENT WAS NAMED AND CREATED IN A MANNER SIMILAR TO THE HISTORY FORM. THE NAME OF THE BOILER PLATE IS "MONUMENT". THE BORDER, STAMP AND SKETCH ARE FROM AUTOCAD RELEASE 12.

THIS RESTORATION WAS PERFORMED AT THE DIRECTION AND APPROVAL OF THE BENTON COUNTY/DEPUTY COUNTY SURVEYOR. rw

FIRM/AGENCY: BENTON COUNTY SURVEYOR'S OFFICE
ADDRESS: 360 S.W. AVERY AVE. CORVALLIS OR 97333; PH. 757-6821
SURVEYOR: CURTIS J. LIESENFELT
SURVEY CREW: MARK E. ANDERSON

REGISTERED
PROFESSIONAL
LAND SURVEYOR

Curtis J. Liesenfelt

OREGON
JULY 17, 1986
CURTIS J. LIESENFELT
2213

LICENSE RENEWAL 12/31/1996

T 155 R7W S1 E 1/4 # 700646

ENO. NO. EVID OF THE DRUG. MONI

" PARTLY ROTTEN 38" D. FIR STUMP @ HEALED FACE, BEARS N46°W ~ 48.04' (30" N47°W ~ 48.04' AS PER MAP. [02]). SET 5 1/2" SPLY BRASS WASHER IN THE SW 1/4 BASE. SET BT TAG ON TOP.

" PARTLY ROTTEN 44" D. FIR STUMP @ HEALED FACE, BEARS S45°W ~ 42.90' (36" S42°W ~ 42.90' AS PER REC. [02]). SET 5 1/2" SPLY BRASS WASHER IN THE SW 1/4 BASE. SET BT TAG ON FACE.

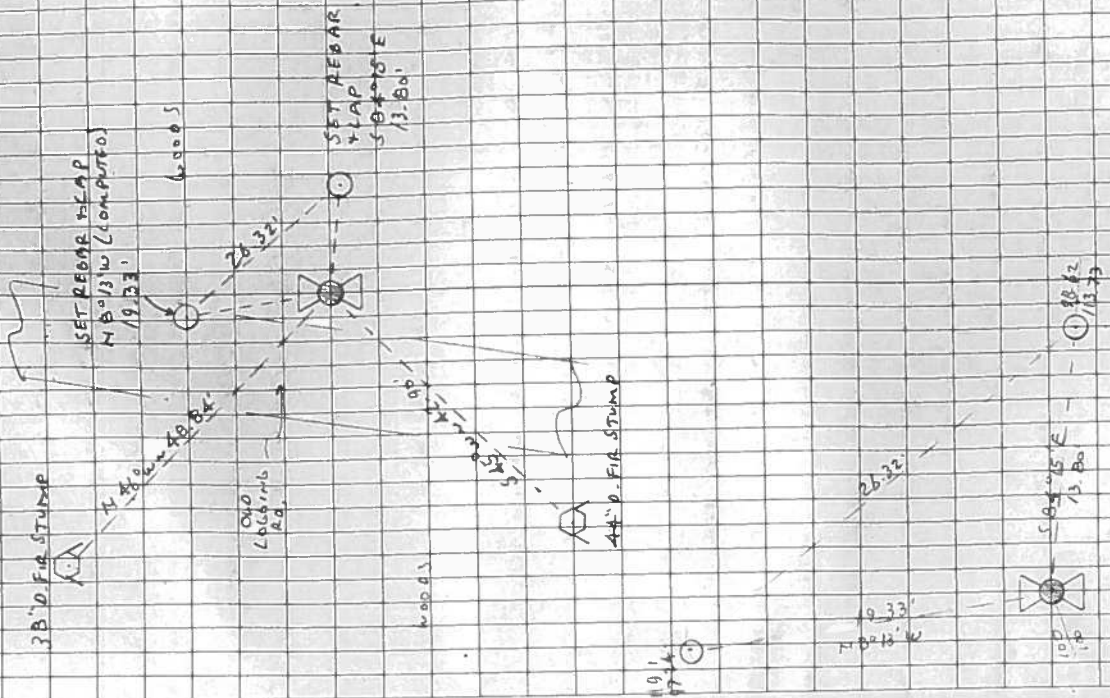
NO OTHER RECORD EVID. WAS RECOVERED THE CORNER FALLS IN THE ROOT GNE ON THE N 1/4 SQ OF A 7" D. FIR SET AN ALL MALLY BRASS W-AWHER FOR A TEMPORARY MONUMENT. GHALED THE TREE (COMPUTED) SET. 5(6" REBAR (SEE NOTES), BEARS N101.5' W ~ 19.33' UAB: 2632

" CORNICE FIBERGLASS 'JUGLET MARKER' POST 1' W 1/2 ON BOUNDARY OF CORNER LOG PO LOCATION TAG ON 14" D. FIR COR. BEARS N102°E ~ 15.5'

THE COR. IS LOCATED ON A HEAVILY WOODED, GENTLY SLOPING N 1/4 FALLING HILLSIDE AT THE TOE OF THE SLOPE OF AN OLD LOGGING PO TO REACH THE COR. (WITH SMALL OFF RO-VEHICLES) FOLLOW THE LOGGING ROADS AS SHOWN ON THE GLENBROOK QUADRANGLE MAP TO A SMALL CLEARING AT THE TOP OF THE R.O.C.L. THIS CORNER IS UNSUITABLE FOR PERMANENT GPS CONTROL.

16/42

6/6/96. GLE MEA, USHIKITA STAFF COMP. 20° E. DEC.



NO BRASS LAG WAS SET

38.42 / 13.73

50.15'E / 13.80'

10.18 / 1.8