

158200640

CORNER FILE TRACKING

| |
|----------------------|
| CORNER NUMBER |
| 158200640 |

| STEP | HISTORY | RESTORATION |
|-----------------------------|----------|-------------|
| Form Prepared, DB | 1/13/20 | 11/22/23 |
| Field Inspection, DB | 11/16/23 | 11/16/23 |
| Finish index (count unit) | 1/13/20 | 11/16/23 |
| Counter Index | 11/16/23 | 11/16/23 |
| GIS Index Form | 11/16/23 | 11/16/23 |
| Checked, DB | 11/22/23 | 11/22/23 |
| Form Edited, DB | 11/22/23 | 11/22/23 |
| Form Signed, DB | 12/05/23 | 12/05/23 |
| Authorize Payment, DB | — | — |
| Archive Digital Files | 12/05/23 | 12/05/23 |
| Collect Documents | 12/05/23 | 12/05/23 |
| PDF File | 12/05/23 | 12/05/23 |
| Copy For Filming | 12/05/23 | 12/05/23 |
| Scanned (pdf to laserfiche) | 12/05/23 | 12/05/23 |
| Filmed (Archived), DB | | |
| Filed, DB | | |

(DB) = Entry needed in database (Access).

COMMENTS:

DATE 01/13/2020

TOWNSHIP 15 SOUTH, RANGE 8 WEST, WILLAMETTE MERIDIAN; SECTION 5 CORNER WEST 1/4
 DONATION LAND CLAIM N/A CORNER N/A

COMMON CORNER(S): EAST 1/4 CORNER SECTION 6

RECORDS (INFORMATION IN *BOLD ITALICS* IS COUNTY STAFFS' INTERPRETATION OF THE RECORD)

BASED ON EXTENSIVE RESEARCH AND RECOVERY OF EVIDENCE, THIS OFFICE HAS DETERMINED THAT MOST GENERAL LAND OFFICE SURVEYORS IN BENTON COUNTY BEFORE 1890 MEASURED TO THE FACE OF BEARING TREES.

- [01] GENERAL LAND OFFICE (GLO) NOTES BY ALONZO GESNER, D.S., DATED JULY 28, 1891. *SET CHERRY POST 3-1/2 FEET LONG, 4" SQUARE, 24" IN THE GROUND, MARKED "1/4S" ON WEST FACE FROM WHICH AN ALDER 20" DIA BEARS S58°W, 78 LINKS (51.48 FEET), MARKED "1/4S BT"; FIR 10" DIA BEARS N19°E, 125 LINKS (82.50 FEET), MARKED "1/4S BT".*
- [02] BENTON COUNTY SURVEY NO. 530 (OLD NO. 243) FIELD NOTES (FIELD BOOK 20, PAGE 35) BY W. C. GALLOWAY, C.S., DATED OCTOBER 12, 1915. *SET IRON 1" X 2-1/2" X 24", PART OF A PLOW. ORIGINAL CORNER. LETTERS ON LOG OF STUMP NORTHEAST. TWO ALDERS SOUTHWEST. FIR 16" DIA BEARS N68°30'E, 1.194 CHAINS VERTICAL ANGLE 17°45' (75.05 FEET); ALDER 7" DIA BEARS N38°45'W, 0.530 CHAINS (34.98 FEET).*
- [03] BENTON COUNTY CORNER RESTORATION BOOK NO. 1, PAGE 98, BY W. C. GALLOWAY, C.S., DATED OCTOBER 14, 1915. *SET IRON 1" X 2-1/2" X 24", PART OF A PLOW. ORIGINAL CORNER. LETTERS ON LOG OF STUMP NORTHEAST. TWO ALDERS SOUTHWEST. MARKED FIR 16" DIA (CSBT) BEARS N68°30'E, 1.194 CHAINS VERTICAL ANGLE 17°45' (75.05 FEET); MARKED ALDER 7" DIA (CSBT) BEARS N38°45'W, 0.530 CHAINS (34.98 FEET).*
- [04] BENTON COUNTY CORNER RESTORATION NO. 2958. *TRANSCRIBED FROM RECORD [03] AND MAY CONTAIN ERRORS AND/OR OMISSIONS.*
- [05] BENTON COUNTY MAP NO. 15-8-00002 BY W. C. GALLOWAY, C.S., DATED OCTOBER, 1915. *1" X 2-1/2" X 24" IRON BAR. FIR 16" DIA (CSBT) BEARS N68°30'E, 1.194 CHAINS VERTICAL ANGLE 17°45' (75.05 FEET); ALDER 7" DIA (CSBT) BEARS N38°45'W, 0.530 CHAINS (34.98 FEET).*
- [06] BENTON COUNTY SURVEY NO. 644 (OLD NO. 243) FIELD NOTES (FIELD BOOK 26, PAGE 37) BY W. C. GALLOWAY, C.S., DATED NOVEMBER 7, 1918. *CORNER NOT DESCRIBED.*
- [07] BUREAU OF LAND MANAGEMENT (BLM) NOTES BY STEPHEN D. HARDIN, CADASTRAL SURVEYOR, DATED FEBRUARY 16, 1979. *THE 1/4 SECTION CORNER, PERPETUATED FROM ORIGINAL EVIDENCE NO LONGER IN EXISTENCE, MONUMENTED WITH A RECTANGULAR IRON BAR, 2-1/2" X 1", FIRMLY SET, PROJECTING 12" ABOVE GROUND. AT THE CORNER POINT SET AN IRON POST, 28" LONG, 2-1/2" DIA, 22" IN THE GROUND, WITH BRASS CAP MARKED "T15S R8W 1/4 S6 S5 1978" FROM WHICH A FIR 8" DIA BEARS N67-1/4°E, 105 LINKS (69.30 FEET), MARKED "1/4 S5 BT"; MAPLE 30" DIA BEARS S24-3/4°W, 120 LINKS (79.20 FEET), MARKED "1/4 S6 BT". RESET IRON BAR ALONGSIDE IRON POST.*
- [08] BENTON COUNTY SURVEY NO. 7406 BY JIM S. PETERSON, P.L.S., DATED JUNE 4, 1982. *SET 5/8" IRON ROD WITH PLASTIC CAP MARKED "LS 1084". FOUND FIR 50" DIA (CSBT) BEARS N68-1/2°E, 1.194 CHAINS SLOPE (78.80 FEET). FIR 8" DIA (BLM BT) BEARS N47°E, 64.1 FEET, SCRIBING VISIBLE; ALDER 12" DIA BEARS S64°W, 13.6 FEET, MARKED "1/4 S6 BT". FOUND BLM BRASS CAP BEARS N44°14'W, 23.19 FEET. A FACE WAS SAWED OUT ON THE LIVE FIR 50" DIA, AND SCRIBING WAS FOUND. THE CORNER WAS REMONUMENTED USING GALLOWAY'S SLOPE DISTANCE AND VERTICAL ANGLE. THE MONUMENT SET FALLS IN AN OLD CAT ROAD, AND IT IS BELIEVED THAT GALLOWAY'S MONUMENT WAS DISTURBED DURING LOGGING AND THEN IMPROPERLY RESET BY UNKNOWN PERSONS, SAID MONUMENT THEN BEING USED BY THE BLM IN 1978.*
- [09] BUREAU OF LAND MANAGEMENT (BLM) NOTES BY STEPHEN D. HARDIN, CADASTRAL SURVEYOR, DATED MARCH 7, 1983. *CORNER MONUMENTED WITH AN IRON ROD, 5/8" DIA, FIRMLY SET, PROJECTING 3" ABOVE GROUND, WITH PLASTIC CAP MARKED "LS 1004" [sic.], FROM WHICH A FIR 54" DIA (CSBT) BEARS N68-1/2°E, 112-1/2 LINKS (74.25 FEET), WITH SCRIBE MARKS "CS 5" VISIBLE ON OPENED BLAZE; ALDER 13" DIA BEARS S64°W, 21-1/2 LINKS (14.19 FEET), WITH SCRIBE MARKS "1/4 S6 BT" VISIBLE ON BARK. FROM THIS POINT THE 1/4 SECTION CORNER ERRONEOUSLY PERPETUATED BY HARDIN IN 1978-79 BEARS N44°19'W, 0.352 CHAINS (23.23 FEET), SET, MARKED, AND WITNESSED AS DESCRIBED IN THE OFFICIAL RECORD. REMOVE THE IRON POST AND IRON BAR, DESTROY THE MARKS ON THE BEARING TREE IN SECTION 6, AND AT THE TRUE CORNER POINT RESET THE IRON POST, 28" LONG, 2-1/2" DIA, 22" IN THE GROUND, DIRECTLY OVER THE IRON ROD, WITH BRASS CAP MARKED "T15S R8W 1/4 S6 S5 1983 1978" FROM WHICH A FIR 8" DIA (BLM BT) BEARS N47°E, 97 LINKS (64.02 FEET), WITH SCRIBE MARKS "1/4 S5 BT" VISIBLE ON PARTIALLY HEALED BLAZE. DEPOSIT IRON BAR ALONGSIDE IRON POST.*
- [10] BUREAU OF LAND MANAGEMENT (BLM) NOTES BY STEPHEN D. HARDIN, CADASTRAL SURVEYOR, DATED SEPTEMBER 29, 1986. *THE 1/4 SECTION CORNER MONUMENTED WITH AN IRON POST, 2-1/2" DIA, FIRMLY SET, PROJECTING 4" ABOVE GROUND, WITH BRASS CAP MARKED "T15S R8W 1/4 S6 S5 1983 1978" FROM WHICH A FIR 54" DIA (CSBT) BEARS N68-1/2°E, 112-1/2 LINKS (74.25 FEET), WITH SCRIBE MARKS "CS 5" VISIBLE ON OPEN BLAZE; ALDER 13" DIA BEARS S64°W, 21-1/2 LINKS (14.19 FEET), WITH SCRIBE MARKS "1/4 S6 BT" VISIBLE ON OPEN BLAZE; FIR 9" DIA (BLM BT) BEARS N47°E, 97 LINKS (64.02 FEET), WITH SCRIBE MARKS "1/4 S5 BT" VISIBLE ON PARTIALLY HEALED BLAZE.*
- [11] BUREAU OF LAND MANAGEMENT (BLM) NOTES BY DANNY J. NEVIN, CADASTRAL SURVEYOR, DATED APRIL 4, 1994. *THE 1/4 SECTION CORNER MONUMENTED WITH AN IRON POST, 2-1/2" DIA, FIRMLY SET, PROJECTING 4" ABOVE GROUND, WITH BRASS CAP MARKED "T15S R8W 1/4 S6 S5 1983 1978" FROM WHICH A FIR 54" DIA (CSBT) BEARS N68-1/2°E, 112-1/2 LINKS (74.25 FEET), WITH SCRIBE MARKS "CS 5" VISIBLE ON OPEN BLAZE; ALDER 13" DIA BEARS S64°W, 21-1/2 LINKS (14.19 FEET), WITH SCRIBE MARKS "1/4 S6 BT" VISIBLE ON OPEN BLAZE; FIR 9" DIA (BLM BT) BEARS N47°E, 97 LINKS (64.02 FEET), WITH SCRIBE MARKS "1/4 S5 BT" VISIBLE ON PARTIALLY HEALED BLAZE.*

FIRM/AGENCY: BENTON COUNTY SURVEYOR'S OFFICE

ADDRESS: 360 S.W. AVERY AVE., CORVALLIS, OR 97333; PH. 541-766-6821

RESEARCH BY: DAVID L. MALONE, P.L.S.

DATA ENTRY BY: SAME

BENTON COUNTY CORNER RESTORATION FORM, PAGE 1 OF 2, 158200640R4**SEE CORNER HISTORY FORM FOR RECORDS ETC.**

CORNER RESTORATION FIELD BOOK NUMBER 34 PAGE(S) 39 DATE 11/16/2023
TOWNSHIP 15 SOUTH, RANGE 8 WEST, WILLAMETTE MERIDIAN; SECTION 5 CORNER WEST 1/4
DONATION LAND CLAIM N/A CORNER N/A
CONDITION REPORT ; REFERENCED OUT X; RENEWED ; SURVEYED IN

LOCATION AND COMMENTS:

CORNER IS LOCATED ABOUT 7 FEET NORTH OF A GRAVEL ROAD AND ABOUT 50 EAST OF A STREAM, WITH A RECENT CLEARCUT TO THE SOUTH, SCATTERED HARDWOODS TO THE NORTHWEST AND MIXED AGE AND TYPE OF TREES TO THE NORTHEAST. TO REACH CORNER FROM THE INTERSECTION OF LOBSTER VALLEY ROAD AND LITTLE LOBSTER ROAD, TRAVEL WEST ALONG LOBSTER VALLEY ROAD FOR 0.64 MILES AND TURN RIGHT ONTO A GRAVEL LOGGING ROAD. FOLLOW GRAVEL ROAD FOR 0.05 MILES TO A WYE, TURN LEFT FOR 0.03 MILES AND PARK. CORNER IS ON THE NORTH SIDE OF GRAVEL ROAD. CORNER IS POOR FOR PREMARKING AND GPS CONTROL.

MONUMENTS AND ACCESSORIES FOUND (CONDITION AND SOURCE):

1. FOUND 3-1/4" BRASS CAP MARKED AS SHOWN ON PAGE 2 OF 2, ON A 2-1/2" IRON PIPE, FIRMLY SET AND UNDISTURBED, FLUSH WITH GROUND SURFACE, FOR THE CORNER.
(SET CHERRY POST 3-1/2 FEET LONG, 4" SQUARE, 24" IN THE GROUND, MARKED "1/4S" ON WEST FACE AS PER RECORD [01]).
(SET IRON 1" X 2-1/2" X 24", PART OF A PLOW. ORIGINAL CORNER AS PER RECORDS [02] AND [03]).
(1" X 2-1/2" X 24" IRON BAR AS PER RECORD [05]).
(THE 1/4 SECTION CORNER MONUMENTED WITH A RECTANGULAR IRON BAR, 2-1/2" X 1", FIRMLY SET, PROJECTING 12" ABOVE GROUND. AT THE CORNER POINT SET AN IRON POST, 28" LONG, 2-1/2" DIA, 22" IN THE GROUND, WITH BRASS CAP MARKED "T15S R8W 1/4 S6 S5 1978". RESET IRON BAR ALONGSIDE IRON POST AS PER RECORD [07]).
(SET 5/8" IRON ROD WITH PLASTIC CAP MARKED "LS 1084". FOUND BLM BRASS CAP BEARS N44°14'W, 23.19 FEET. IT IS BELIEVED THAT GALLOWAY'S MONUMENT WAS DISTURBED DURING LOGGING AND THEN IMPROPERLY RESET AND USED BY THE BLM IN RECORD [07], AS PER RECORD [08]).
(CORNER MONUMENTED WITH AN IRON ROD, 5/8" DIA, FIRMLY SET, PROJECTING 3" ABOVE GROUND, WITH PLASTIC CAP MARKED "LS 1004" [SIC.]. FROM THIS POINT THE 1/4 SECTION CORNER ERRONEOUSLY PERPETUATED BY RECORD [07] BEARS N44°19'W, 0.352 CHAINS [23.23 FEET], SET, MARKED AND WITNESSED AS DESCRIBED IN THE OFFICIAL RECORD. REMOVE THE IRON POST AND IRON BAR, AND AT THE TRUE CORNER POINT RESET THE IRON POST, 28" LONG, 2-1/2" DIA, 22" IN THE GROUND, DIRECTLY OVER THE IRON ROD, WITH BRASS CAP MARKED "T15S R8W 1/4 S6 S5 1983 1978". DEPOSIT IRON BAR ALONGSIDE IRON POST AS PER RECORD [09]).
(THE 1/4 SECTION CORNER MONUMENTED WITH AN IRON POST, 2-1/2" DIA, FIRMLY SET, PROJECTING 4" ABOVE GROUND, WITH BRASS CAP MARKED "T15S R8W 1/4 S6 S5 1983 1978" AS PER RECORDS [10] AND [11]).
2. FOUND D. FIR 59" DIA WITH REHEALED CUT OPEN FACE BEARS N68°30'E, 74.06 FEET TO CENTER. **HELD FOR BASIS OF BEARINGS FOR THIS RESTORATION.** SET ALUMINUM NAIL AND PLASTIC WASHER IN NORTHWESTERLY BASE FOR DISTANCE MEASUREMENT.
(FIR 16" DIA BEARS N68°30'E, 1.194 CHAINS VERTICAL ANGLE 17°45' [75.05 FEET] AS PER RECORDS [02] AND [05]).
(MARKED FIR 16" DIA BEARS N68°30'E, 1.194 CHAINS VERTICAL ANGLE 17°45' [75.05 FEET] AS PER RECORD [03]).
(FOUND FIR 50" DIA BEARS N68-1/2°E, 1.194 CHAINS SLOPE [78.80 FEET]. CORNER WAS REMONUMENTED USING GALLOWAY'S SLOPE DISTANCE AND VERTICAL ANGLE AS PER RECORD [08]).
(FIR 54" DIA BEARS N68-1/2°E, 112-1/2 LINKS [74.25 FEET], WITH SCRIBE MARKS "CS 5" VISIBLE ON OPEN BLAZE AS PER RECORDS [09] THRU [11]).
3. FOUND D. FIR 13" DIA WITH HEALED FACE BEARS N46°52'E, 63.89 FEET TO CENTER. SET ALUMINUM NAIL AND PLASTIC WASHER IN NORTHWESTERLY BASE FOR DISTANCE MEASUREMENT.
(FIR 8" DIA BEARS N67-1/4°E, 105 LINKS [69.30 FEET], MARKED "1/4 S5 BT" AS PER RECORD [07]).
(FIR 8" DIA BEARS N47°E, 64.1 FEET, SCRIBING VISIBLE AS PER RECORD [08]).
(FIR 8" DIA BEARS N47°E, 97 LINKS [64.02 FEET], WITH SCRIBE MARKS "1/4 S5 BT" VISIBLE ON PARTIALLY HEALED BLAZE AS PER RECORD [09]).
(FIR 9" DIA BEARS N47°E, 97 LINKS [64.02 FEET], WITH SCRIBE MARKS "1/4 S5 BT" VISIBLE ON PARTIALLY HEALED BLAZE AS PER RECORDS [10] AND [11]).

MONUMENT SET (PROCEDURES AND DESCRIPTION):

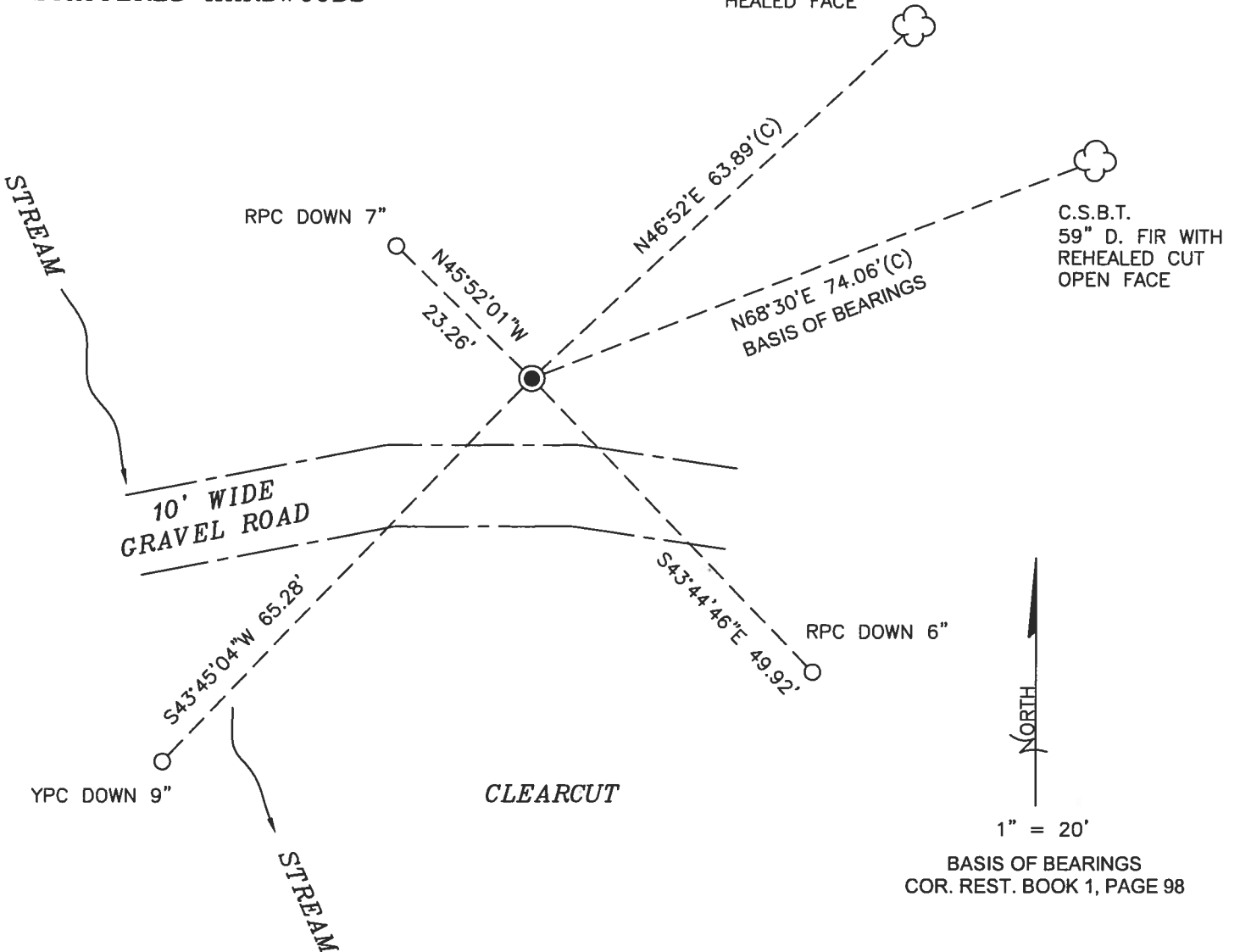
FOUND 3-1/4" BRASS CAP MARKED AS SHOWN ON PAGE 2 OF 2, ON A 2-1/2" IRON PIPE, FIRMLY SET AND UNDISTURBED, FLUSH WITH GROUND SURFACE, FOR THE CORNER. THE BRASS CAP AND IRON PIPE WERE SET IN 1983 BY STEPHEN D. HARDIN, BUREAU OF LAND MANAGEMENT (BLM) CADASTRAL SURVEYOR, IN PLACE OF A 5/8" IRON ROD SET IN 1982 BY JIM S. PETERSON, P.L.S., FROM ONE REMAINING BEARING TREE MARKED IN 1915 BY W. C. GALLOWAY, C.S. GALLOWAY HAD ALSO SET AN IRON BAR FROM THE REMAINING EVIDENCE OF THE ORIGINAL CORNER AND TWO GENERAL LAND OFFICE (GLO) BEARING TREES. HARDIN SET A BRASS CAP AND IRON PIPE IN 1979 IN PLACE OF GALLOWAY'S IRON BAR, BUT PETERSON DETERMINED FROM GALLOWAY'S BEARING TREE THAT THE IRON BAR MUST HAVE BEEN DISTURBED AND IMPROPERLY RESET. HARDIN RESET THE BRASS CAP AND IRON BAR USING GALLOWAY'S TREE AS DETERMINED BY PETERSON. THE CURRENT POSITION OF THE BRASS CAP AND IRON PIPE SET IN 1983 ARE ACCEPTED AS THE PERPETUATION OF THE ORIGINAL CORNER POSITION.

SET THREE NEW IRON ROD ACCESSORIES AS SHOWN ON PAGE 2 OF 2. FOUND METAL "T" POST 6" WEST OF BRASS CAP. SET 6 FOOT ORANGE CARSONITE "SURVEY MARKER" POST 1 FOOT SOUTH OF BRASS CAP.

SCATTERED HARDWOODS

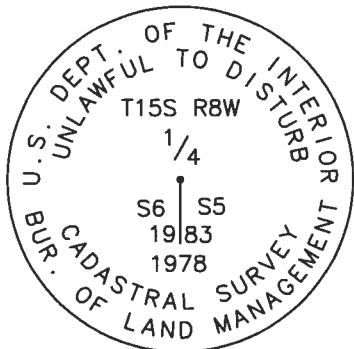
1979 BLM B.T.
13" D. FIR WITH
HEALED FACE

MIXED AGE AND
TYPE TREES



MONUMENT DETAIL

LEGEND



3-1/4" BRASS CAP

- SET 5/8" X 30" REBAR WITH PLASTIC CAP
- YPC YELLOW PLASTIC CAP MARKED "BENTON COUNTY SURVEYOR"
- RPC RED PLASTIC CAP MARKED "BENTON COUNTY SURVEYOR"
- (C) MEASUREMENT TO CENTER
- GOVERNMENT MONUMENT FOUND AS SHOWN
- C.S.B.T. COUNTY SURVEYOR'S BEARING TREE
- COR.REST. BENTON COUNTY CORNER RESTORATION
- BLM BUREAU OF LAND MANAGEMENT
- B.T. BEARING TREE
- ☁ BEARING TREE AS NOTED

NEW ACCESSORIES:

1. SET REBAR (SEE LEGEND) S43°44'46"E, 49.92 FEET AND 6 INCHES BELOW GROUND LEVEL.
2. SET REBAR (SEE LEGEND) S43°45'04"W, 65.28 FEET AND 9 INCHES BELOW GROUND LEVEL.
3. SET REBAR (SEE LEGEND) N45°52'01"W, 23.26 FEET AND 7 INCHES BELOW GROUND LEVEL.

NOTES:

COMPASS DECLINATION IS 15° EAST. ALL MEASURED DISTANCES AND BEARINGS ARE TO THE CENTER OF THE OBJECT, UNLESS OTHERWISE NOTED. ALL LIVE BEARING TREES ARE PAINTED AND HAVE A B.T. TAG ATTACHED, FACING THE CORNER UNLESS OTHERWISE NOTED. ALL NEW BEARING TREES HAVE A PLASTIC WASHER (STAMPED "SURVEY MARKER, DO NOT REMOVE") ATTACHED BY AN ALUMINUM NAIL TO THE SIDE CENTER OF THE TREE FOR DISTANCE MEASUREMENT, UNLESS OTHERWISE NOTED.

THIS RESTORATION WAS PERFORMED AT THE DIRECTION AND APPROVAL OF THE BENTON COUNTY SURVEYOR *DM*

REGISTERED
PROFESSIONAL
LAND SURVEYOR

FIRM/AGENCY: BENTON COUNTY SURVEYOR'S OFFICE
 ADDRESS: 360 S.W. AVERY AVE., CORVALLIS, OR 97333; PH. 541-766-6821
 PRESENT: DAVID L. MALONE, P.L.S., AND BERNARD ALTENBACH, SURVEY TECH.
 EQUIPMENT: NIKON NIVO3.C WITH SURVEY PRO ONBOARD.

12/05/23 *David L. Malone*

OREGON
JANUARY 12, 1999
DAVID L. MALONE
51523

RENEWAL DATE: 12/31/24

CORNER RESTORATION BOOK NO. 1

CS # 244
W.C. Galloway, C.S.

Meander corner on W. bank of East Willamette River
8.03 chs. South of Cor. to secs. 1, 6, 7 & 12 T. 12 S. R. 4 & 5 W.
Drove nail in root on steep bank about 3ft. lower than level ground
Ash stump 20" in dia. bears S. 42° 15' W. .47 chs.
" 6" " " " N 45° E. .75 " stl. remkd.
Marked Ash 10" " " " N. 8° W. .195 "

CS # 245

CS # 243
W.C. Galloway, C.S.

1/4 sec. cor. between secs. 4 & 5 T. 15 S. R. 8 W.
Set brake lever
Fir 50" in dia. bears S. 7° E. 1.95 chs. stump.
" 60" " " " S. 64° W. 3.92 " std.
Witnesses M.W. & Lester Skeels Oct. 12 1915.

Corner to Secs. 4, 6, 8 & 9 T. 15 S. R. 8 W.
Set a wringer orig. cor. N.E. snag. N.W. stump.
Alder 3" in dia. bears N. 6° E. .170 chs.
Fir 12" " " " S. 62° E. .07 " std.
" 7" " " " S. 22° W. .23 " " not grown over
" 30" " " " N. 17° 40' W. .720 "
Witnesses M.W. & Lester Skeels, W.A. Moore & Joe Davis Oct. 13, 1915.

1/4 cor. between secs. 5 & 6 T. 15 S. R. 8 W.
Set Iron 1" x 2 1/2" x 24" part of plow. Orig. cor. Letters on log of stump
2 alders sw.
Mkd. Fir 16" in dia. bears N. 68° 30' E. 1.194 chs. Vert. L 17° 45'
" Alder 7" " " " N. 38° 45' W. .530 "
Witnesses M.W. & Lester Skeels, W.A. Moore, Joe Davis & A. Tilson, Oct. 14, 1915

CS
CS # 190
W.C. Galloway, C.S.

1/4 cor. between secs. 5 & 8 T. 15 S. R. 8 W.
Set a 3/4" rod Alder down. Corner in the draw or ditch of a
steep canyon steep hillside s. of cor. & west also pretty steep on N.
Fir 14" in dia. bears S. 73° E. .29 chs. std. dead.
" 16" " " " S. 73° E. .600 "
Maple 15" " " " N 30° W. .400 "
Alder 20" " " " North .120 " This alder bears name & date of
first survey. also mkd. CS. 243 BT.
Witnesses M.W. & Lester Skeels, Joe Davis and W.A. Moore Oct. 15, 1915

1/4 cor. between secs. 32 & 5 Tps. 14 & 15 S. R. 8 W.
Set a 3/8" x 1" iron bar
Fir 18" in dia. bears N. 2° W. .38 chs. std. dead. girdled.
" 28" " " " N. 17° E. .694 "
" 24" " " " S. 61° 30' W. .29 " "
Witnesses Joe Davis, Lester Skeels & W.A. Moore Oct. 16, 1915.

CS # 245
W.C. Galloway, C.S.

Cor. to secs. 25, 26, 35 & 36 T. 13 S. R. 5 W.
Set 3/4" wire found old oak stake which is driven by pipe also small stone.
Ash 5" in dia. bears N. 15° E. .88 chs. std.
" 3" " " " S. 19° 45' E. .08 " "
Oak 14" " " " S. 31° W. .670 "
" 15" " " " N. 24° 30' W. 4.19 " " Witnesses Lolan Beach, S.R. Taylor &
Michael R. Kard. Oct. 20, 1915.

Miscellaneous
C.S.

02958

$\frac{1}{4}$ -Section corner between sections 5 and 6, Twp. 15 S., R. 8 W.

3496

Reestablishment by W. C. Galloway

October 14, 1915

Set Iron 1" x 2 $\frac{1}{2}$ " x 24" part of plow. Original corner, Letters on log of stump, N. E.

2 Alders S. W.

Fir 16" in diam bears N 68° 30' E

1.194 chains (Vert 17° 48')

Alder 7" in diam bears N 38° 45' W

.530 chains

Witnesses M. W. and Lester Skells, W. A. Moore, Joe Davis and A. Tilson