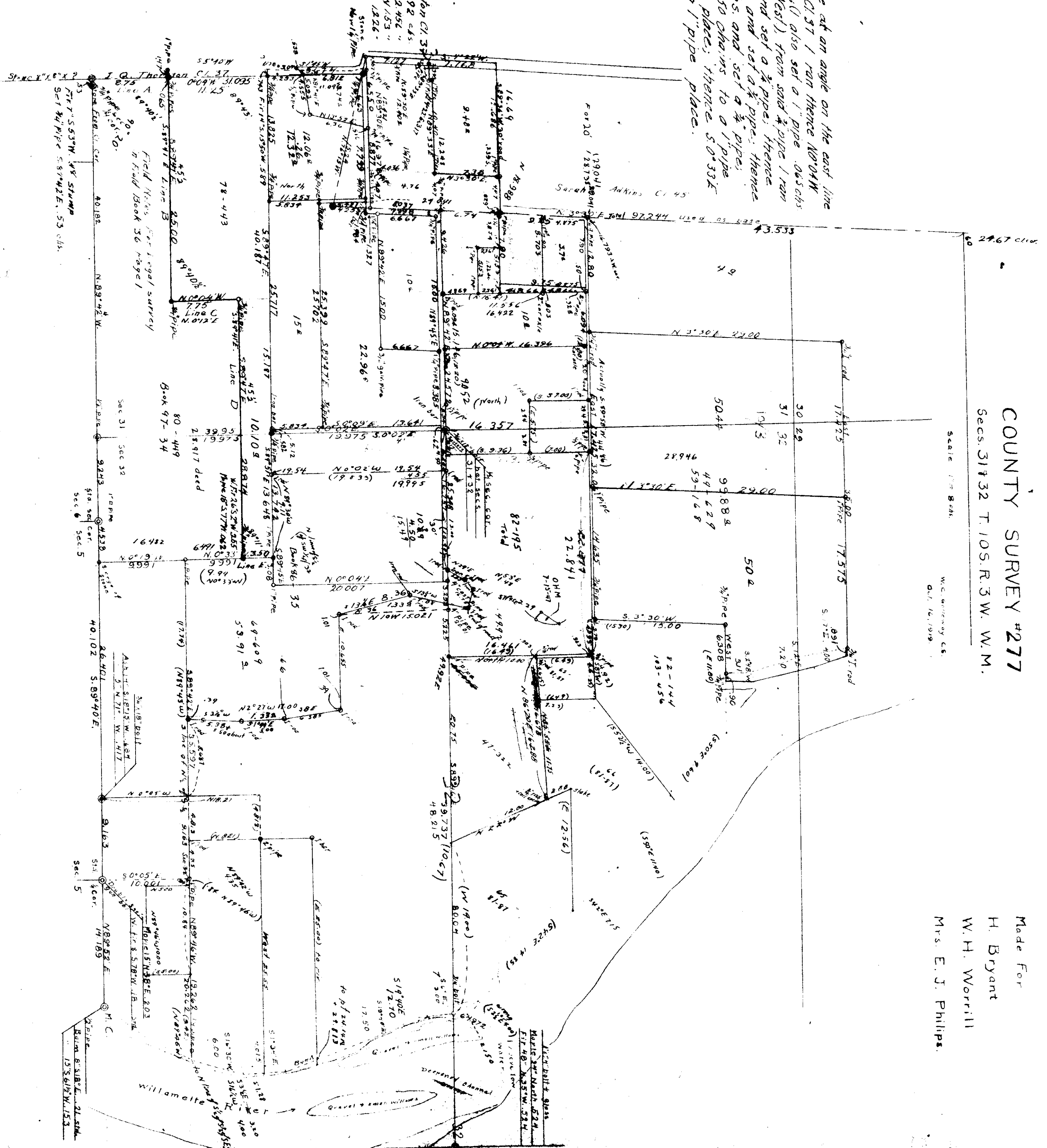


10-3
3/32

00005

C 5 277

Begin at a stone at an angle on the east line of the J. Q. Thornton C. 37 1 ran thence N0°04'W 875 and set a 3/4" pipe; (also set a 1" pipe 0.65 chs South and 1.41 chs West), from said 3/4" pipe 1 ran S0°04'W 25 chs. and set a 3/4" pipe; thence N0°04'W 175 chs. and set a 3/4" pipe; thence S89°57'E 288 7/8 chs. and set a 3/4" pipe; thence N0°33'W 3.50 chains to a 1" pipe which I found in place; thence S0°33'E 8.91 chains to a 1" pipe place.



COUNTY SURVEY #277
Secs. 31 & 32 T. 10S. R. 3W. W.M.

Scale 1" = 80 ft.
W.C. Gentry C.S.
Oct. 16, 1919

Made For
H. Bryant
W.H. Worrill
Mrs. E. J. Phillips.

COUNTY SURVEY #277

Secs. 31 & 32 T. 10S. R. 3W. W.M.

Made For
H. Bryant
W. H. Worrill
Mrs. E. J. Philips.

W.C. Galloway C.S.
Oct. 16, 1919.

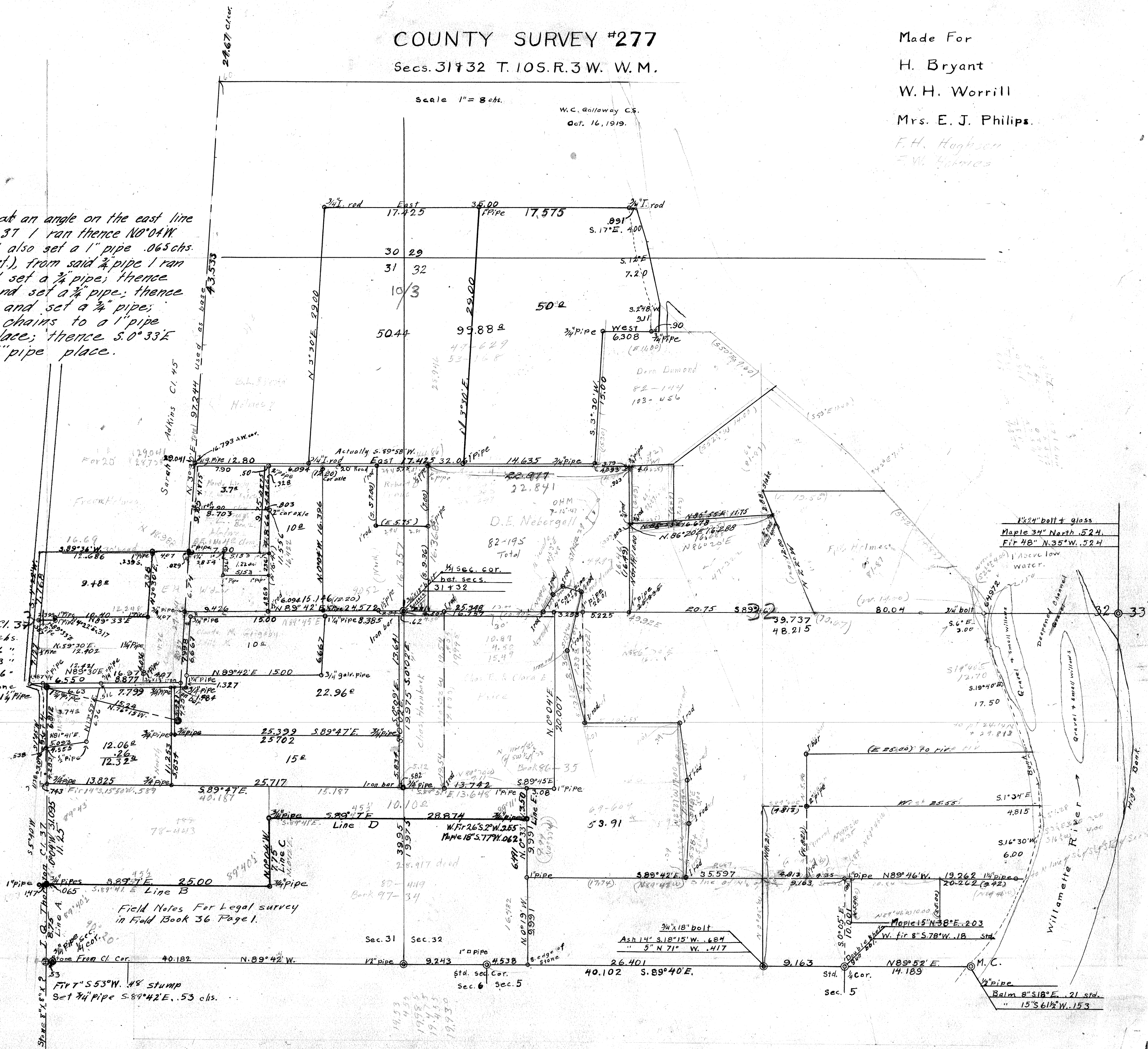
Scale 1" = 8 chs.

Began at a stone at an angle on the east line of the J. Q. Thornton Cl. 37 I ran thence N0°04'W. 8.75 chs and set a 3/4" pipe; (I also set a 1" pipe .065 chs. South and 1.47 chs. West.) from said 3/4" pipe I ran S. 89° 57' E. 25. chs. and set a 3/4" pipe; thence N. 0° 04' W. 7.75 chs. and set a 3/4" pipe; thence S. 89° 57' E. 28.874 chs. and set a 3/4" pipe; thence N. 0° 33' W. 3.50 chains to a 1" pipe which I found in place; thence S. 0° 33' E. 9.991 chains to a 1" pipe place.

C.S. 277

1 1/4" pipe
N.E. of J. Q. Thornton Cl. 37
Stone N. 76° 15' W. 1.92 chs.
Fir 24" N. 64° 23' W. 2.45L "
S.W. cor. House N. 6 3/4' W. 1.53 "
Cherry 7" N. 50° 50' E. 1.226 "

00005
10-3
31.32



Field Notes For Legal survey
in Field Book 36 Page 1.

1 1/2" bolt + glass
Maple 34" North .524
Fir 48" N. 35° W. .524
Above low water.

Balm 8" S. 18° E. 21 std.
" 15" S. 61 1/2° W. 15.3