

10-4
5, 6, 7, 8

00003

COUNTY SURVEY No 223

Made For
E.A. Thurston - O.T. Murphy, et al.

John Rodgers, Andrew Chamberlain and G.K. Culp Cls. T. 10S. R. 4W.

Scale: 1" = 10 Chs.

May 28 - June 3, 1915

Burt Wilkes Dep. C.S.

NW Cor. A. Pyburn Cl. 67
Reestablished
Set 3/4" x 30" steel shaft
Oak 30" N15°W 1380 Stamp
Nack Oak 12" N15°W 270

SW. James M.E. Lane Cl. #38
Stone 18" x 16" x 9"
N 89° 53' E
79.973

Joseph Chamberlain
Cl. #4

Andrew Chamberlain
Cl. #5

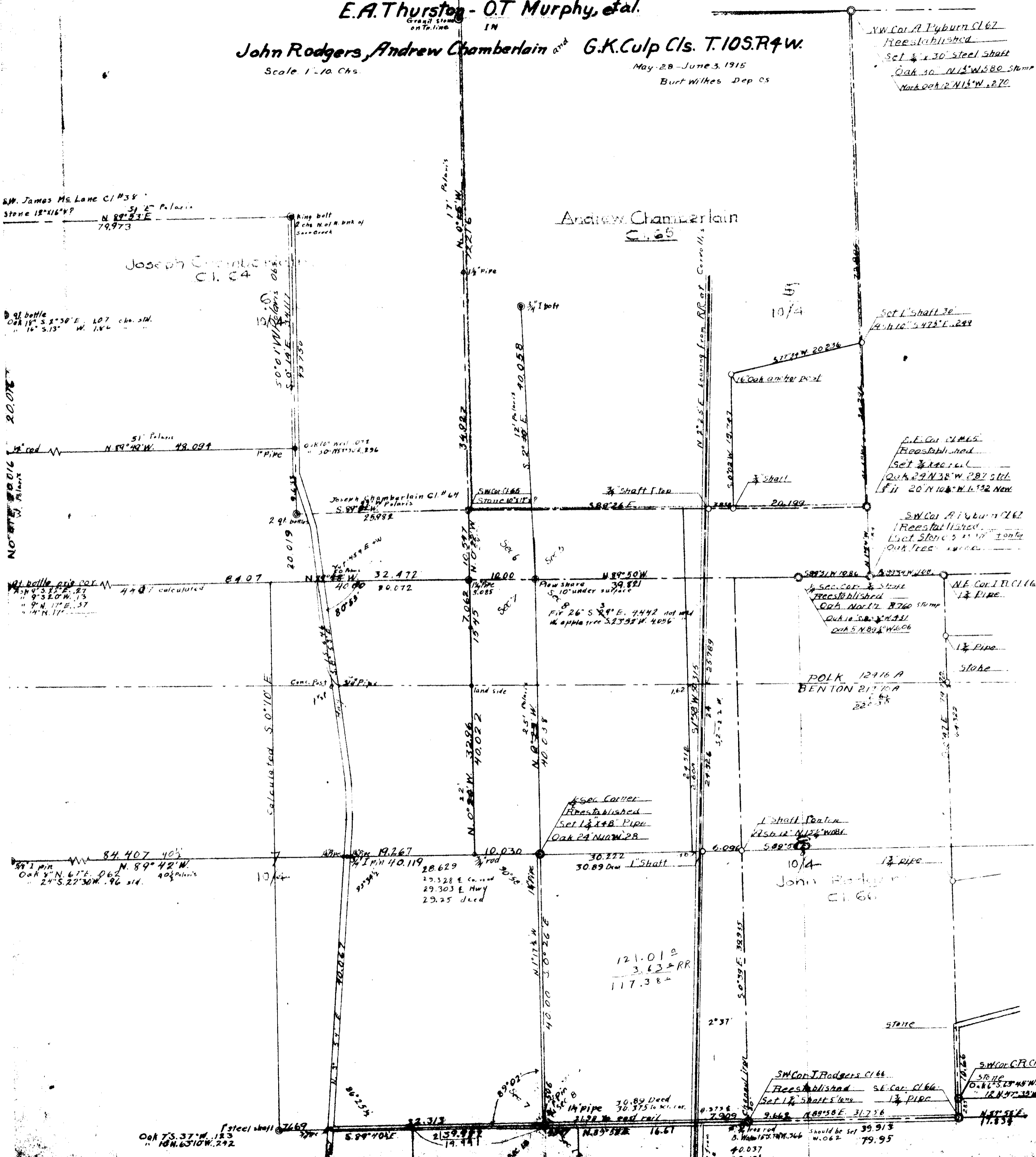
9 qt bottle
Oak 15" S 2° 30' E 1.07 chs. std.
" 16" S 13° W 1.14

20.016
N 0° 01' 10" W Polaris

9 qt bottle
Oak 15" S 2° 30' E 1.07
" 9" S 20° W 1.13
" 9" N 11° E 1.37
" 14" N 11°

84.407 40'
N 89° 42' W
Oak 4" N 67° E 0.62
" 24" S 22° 30' W .96 sid.

Steel shaft
Oak 7.5" S 37° W 1.23
" 18" N 63° 10' W 2.42



SE. Cor. Cl. #65
Reestablished
Set 3/4" steel
Oak 29" N 38° W 287 sid.
" 20" N 10° W 152 New

SW. Cor. A. Pyburn Cl. 62
Reestablished
Set Stone 2 1/2" x 1 1/2" x 1 1/2"
Oak 12" N 15° W 270

POLK 12916 A
BENTON 2170 A

10/4
John Rodgers
Cl. #6

SW. Cor. J. Rodgers Cl. #6
Reestablished
Set 1 1/2" shaft 5' long
1 1/2" pipe

SW. Cor. C.F. Cl. 68
Set 1 1/2" shaft 5' long
1 1/2" pipe

30.89 Deed
36.375 to NW. cor.
31.22 to east rail
N 89° 58' E 16.61
Should be set 39.913
W. 0.62 79.95

121.012
3.63 RR
117.384

1/2" sec. corner
Reestablished
Set 1 1/2" x 8" pipe
Oak 24" N 40° W 28

1" shaft
Set 1 1/2" N 15° W 270

Row share
5' 10" under surface
Fix 26" S 29° E 7.442 not used
W. apple tree 5.2335 W. 4.056

Joseph Chamberlain Cl. #4
S 89° 53' E
25.932

NE. Cor. J. Rodgers Cl. #6
1 1/2" pipe
1 1/2" pipe
stone

