

10-4
11-14-15

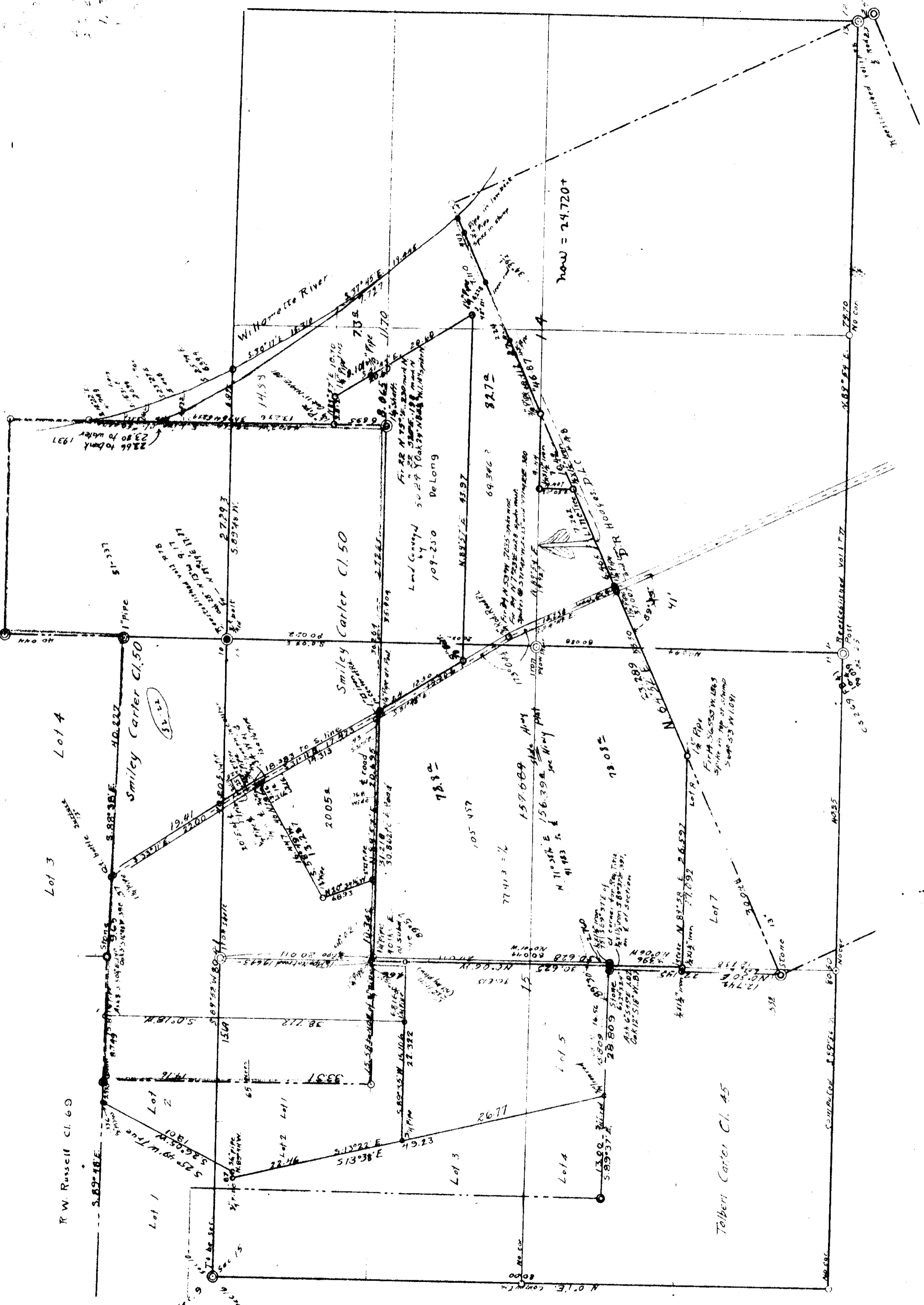
00006

C 5 205

COUNTY SURVEY NO 205
George Armstrong Estate - Abner Finkle CI
for Julius Kincaid
Secs. 11-14-15 T.10 S.R. 4 W. W.M.
Surveyed Feb-March-1914 7 Scale 1"=100 chs.
Reviewed Sept 1937
Book 91 - Page 25.
Burt Wimer D.C.S.

(11)

(10)



8

14