

COUNTY SURVEY NO. 353

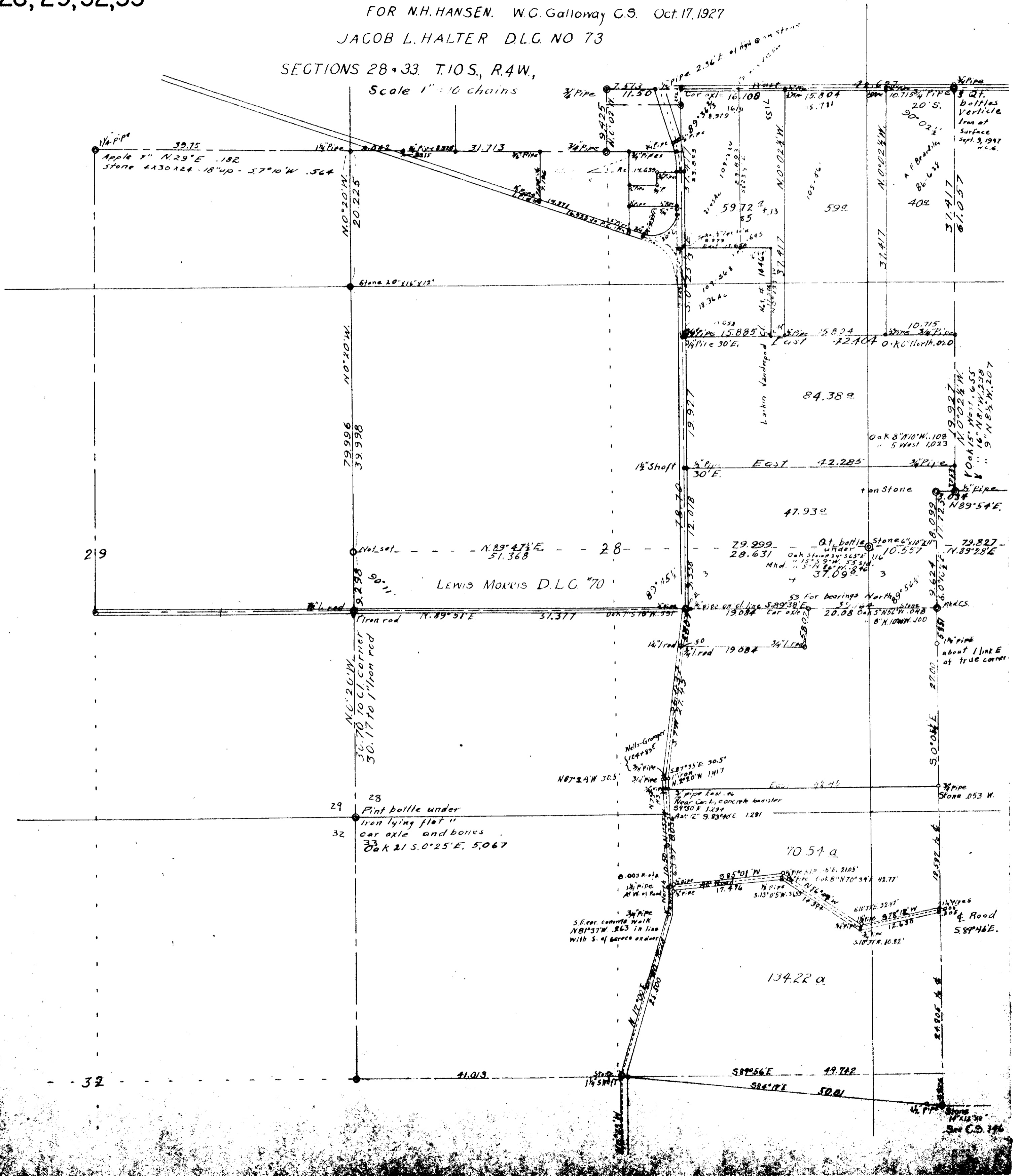
28, 29, 32, 33

FOR N.H. HANSEN. W.C. Galloway C.S. Oct. 17, 1927

JACOB L. HALTER D.L.G. NO 73

SECTIONS 28 & 33. T.10S., R.4W.,

Scale 1" = 40 chains



29

28

29

32

32

LEWIS MORRIS D.L.G. #70

Apple 7" N. 29° E. 182
stone 4x30x24 - 18" up - S. 7° 10' W. 564

Stone 10" x 16" x 12"

N.C. 20' W.
30.70 to C.I. corner
30.17 to 1" iron rod

Pint bottle under
iron lying flat
car axle and bones
Oak 21 S. 0° 25' E. 5.067

S.E. cor. concrete walk
N 81° 37' W. 8.63 in line
with S. of garage on date

3 Qt. bottles
vertical
Iron at
Surface
Sept. 9, 1947
W.C.G.

Oak 8" N. 10' W. 1.108
5 West 1.023
N. 0° 02' 1/2" W.
16" N. 81' W. 2.358
9" N. 8 1/2' W. 1.207

Iron Stone
N 89° 54' E.

1/4" pipe
about 1 link E
of true corner.

1/4" pipes
& Road
S 89° 46' E.

70.54 a

134.22 a

See C.S. 146