

32.5

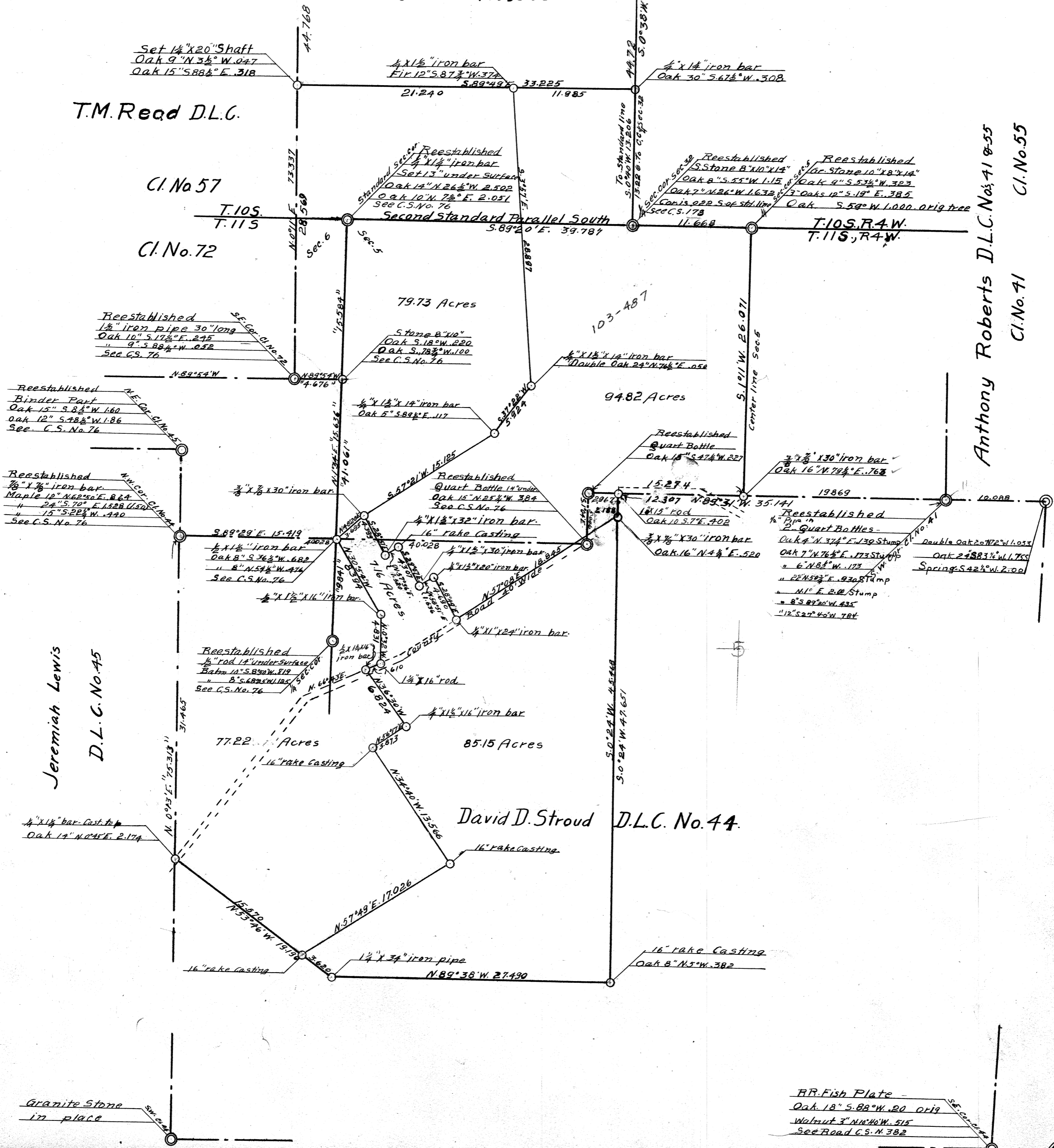
COUNTY SURVEY, No. 236

W.T Wilson ^{Made For} And Harold Densham
D.D. Stroud D.L.C. No. 44 T.IIS, R.4.W.
Section 32, T.10S., R.4.W. - Section 5, T.IIS, R.4.W.
Will. Mer., Benton County Oregon.
Scale 1" = 8.00 Chs
Jan. 8, 1918

Field Book 24, Page 66

T.M. Read D.L.C.

Anthony Roberts D.L.C. Nos. 41 & 55
C.I. No. 55
C.I. No. 71



Granite Stone
in place

RR Fish Plate -
Oak 18" S. 88° W. 20 Orig
Walnut 3" N. 26° W. 515
See Road C.S. No. 382