

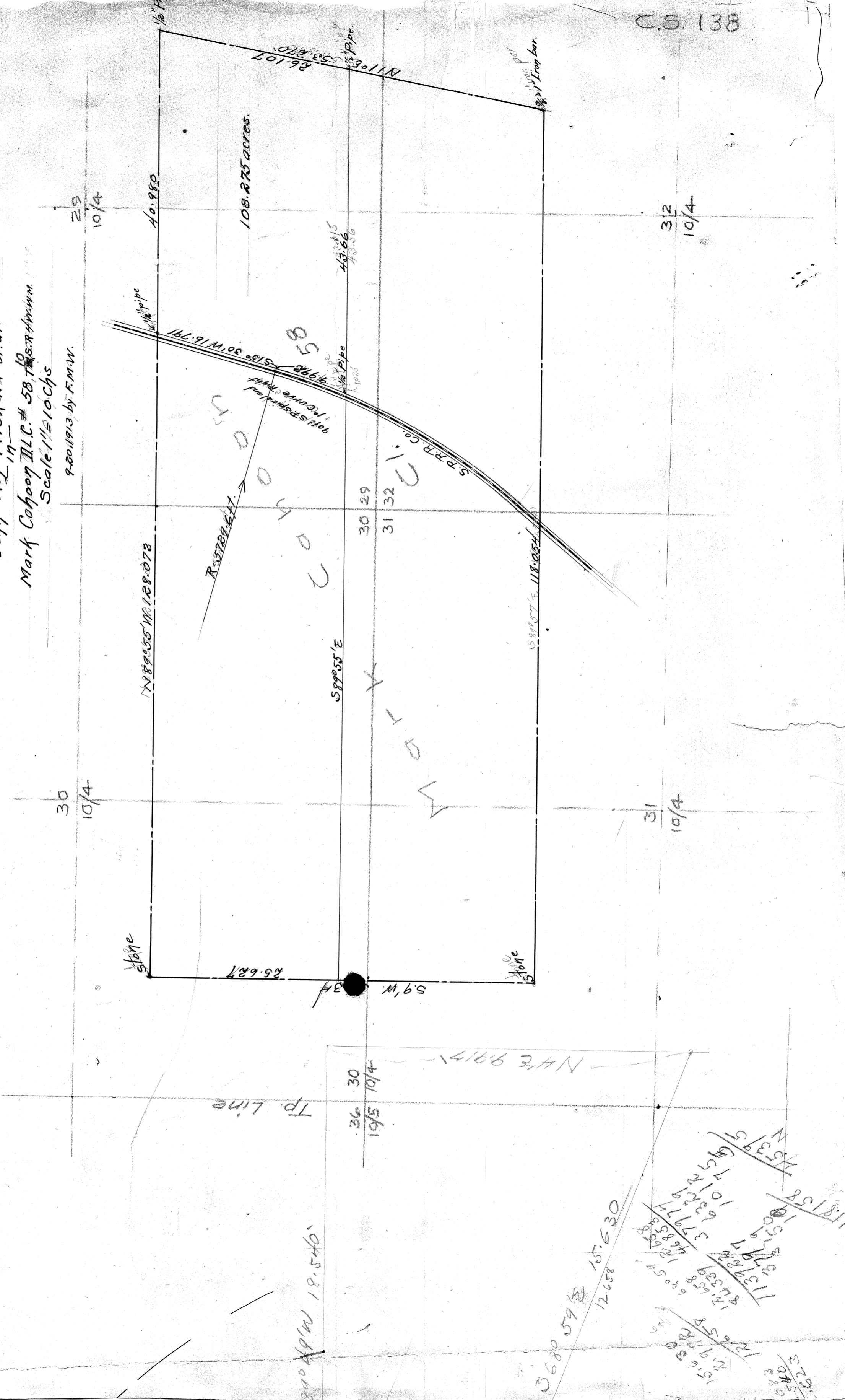
COUNTY SURVEY No 138

139 on back of this sheet
in T.12S. R.6W

John Roy Richard et al.

Mark Cahoon LLC # 58, TRS. HMM 1171
Scale 1" = 10 chs

7-20-1913 by F.M.W.



TP. Line

36 30
19/5 10/4
N 4° E 917'

89° 49' W 18.540'

0680 59 E
12.658
157.630

118/158
N 52° 19' W 156.7
N 53° 19' W 156.7
N 54° 19' W 156.7
N 55° 19' W 156.7
N 56° 19' W 156.7
N 57° 19' W 156.7
N 58° 19' W 156.7
N 59° 19' W 156.7
N 60° 19' W 156.7
N 61° 19' W 156.7
N 62° 19' W 156.7
N 63° 19' W 156.7
N 64° 19' W 156.7
N 65° 19' W 156.7
N 66° 19' W 156.7
N 67° 19' W 156.7
N 68° 19' W 156.7
N 69° 19' W 156.7
N 70° 19' W 156.7

540
522