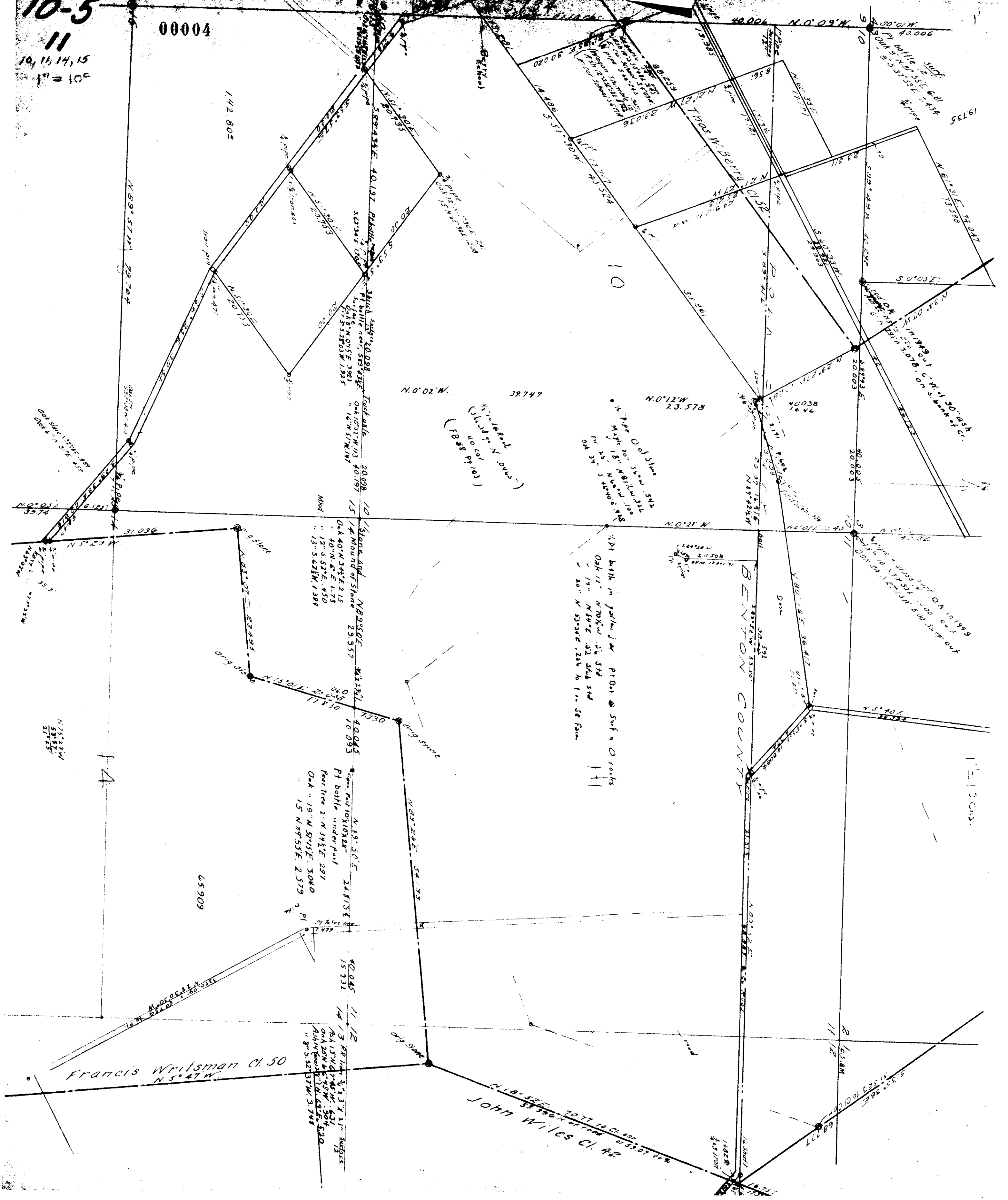


10-5
11
10, 11, 14, 15
1" = 100'

00004



Francis Writsman Cl. 50
N 5° 41' W

John Wiles Cl. 42
N 18° 52' E 70.77 to Cl. 50
S 53° 50' W 53.07 to Cl. 50

65909

39749

40038
16.46

40005
20.005

40003
20.003

40006
40.006

40004
40.004

1110095

14

10

1735

5166

5166

5166

5166

5166

5166

5166