

10-5 00007

21,22,27&28

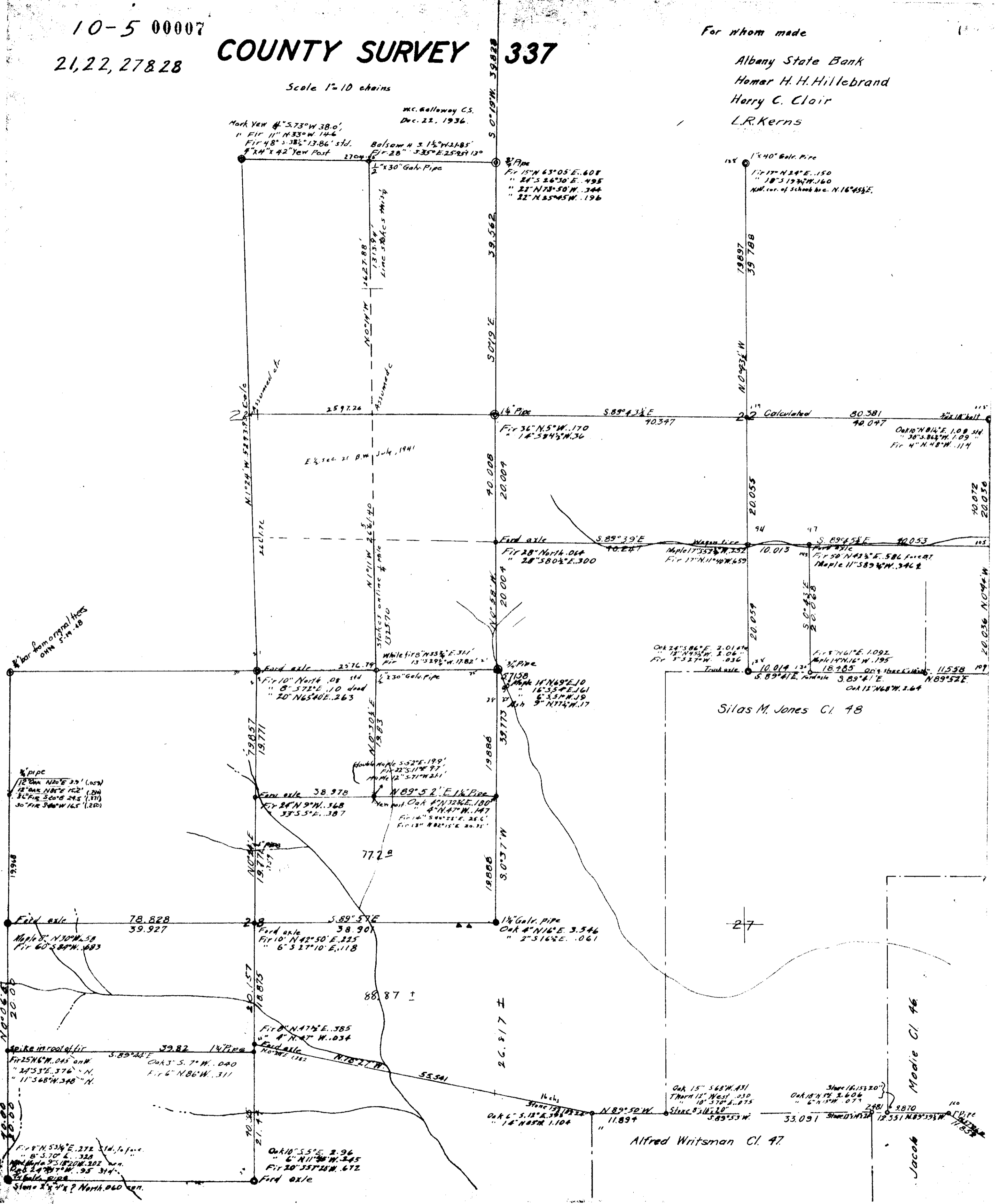
COUNTY SURVEY 337

Scale 1"=10 chains

Mc. Galloway C.S.
Dec. 22, 1936.

For whom made

Albany State Bank
Homer H. Hillebrand
Harry C. Clair
L.R. Kerns



Silas M. Jones Cl. 48

Alfred Writsman Cl. 47

Modie Cl. 46
Jacob