

627
13,18

00003

COUNTY SURVEY No. 235. 227

M.L.F. Robbins DLC. No. 37-T. 10S., R. 7W., C. 1. No. 49-T. 10S., R. 6 W.-Will. Mer.

Scale 1/10 Chs.

Benton County, Oregon
Made For

Nov. 23, 1916

E.C. Minton

J.P. Warinner

Field Book 19, Page 48

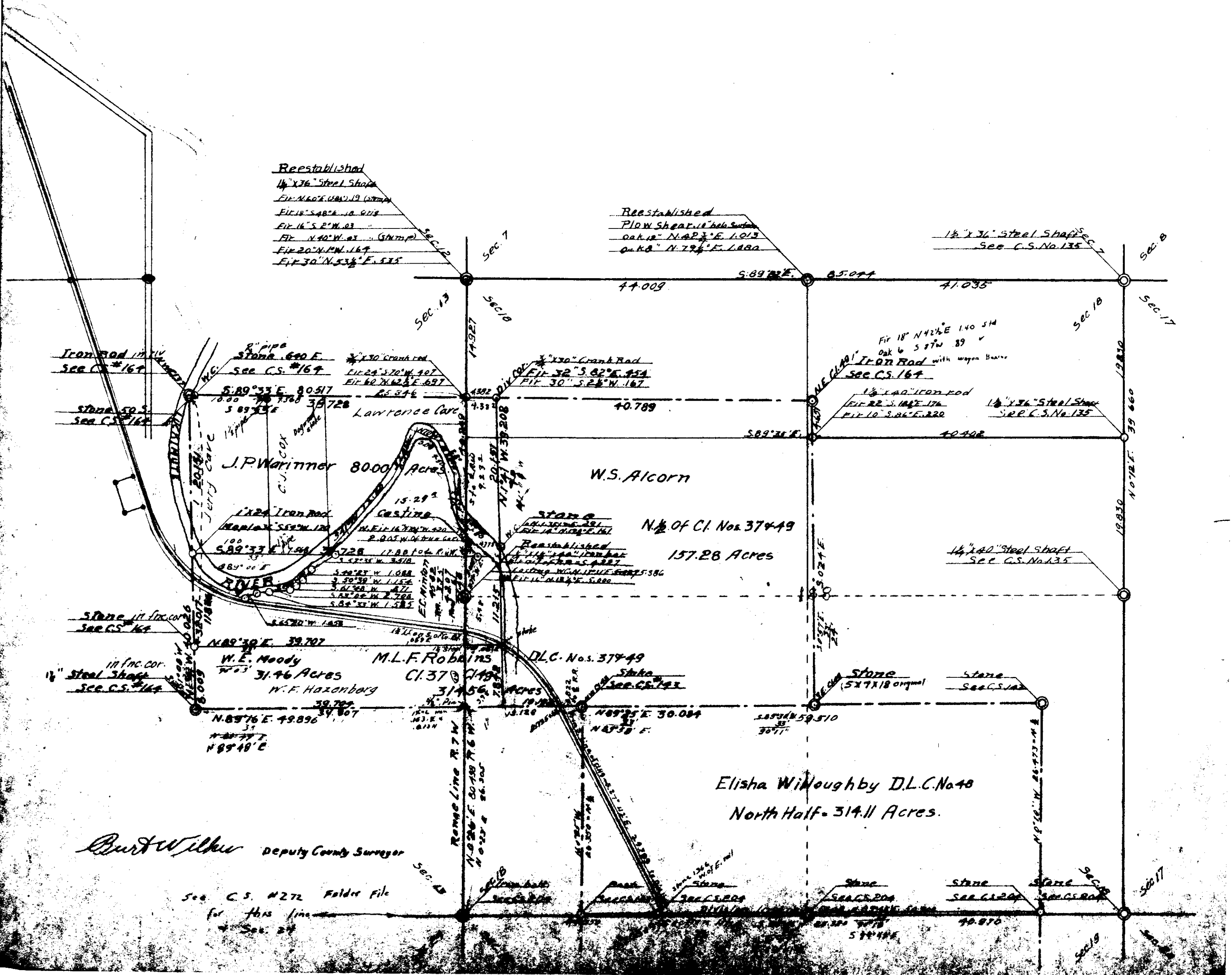
Continuation Made For

W.S. Alcorn

James Watson

Field Book 24 - Page 50

Nov. 18, 1917



Reestablished
 1/2" x 3/16" Steel Shaft
 Fir N. 60° E. 100.19 (Station)
 Fir 18° S. 80° E. 10.918
 Fir 16° S. 2° W. 0.3
 Fir N. 40° W. 0.3 (Station)
 Fir 20° N. W. 1.67
 Fir 30° N. 53 1/2° E. 5.55

Reestablished
 1/2" x 3/16" Steel Shaft
 Oak 18° N. 42 1/2° E. 1.013
 Oak 18° N. 79 1/2° E. 1.480

1/2" x 3/16" Steel Shaft
 See C.S. No. 135

J.P. Warinner 8000 Acres

W.S. Alcorn

N. 1/2 of C. 1. No. 37449

157.28 Acres

M.L.F. Robbins
 CI. 37

DLC. Nos. 37449

314.56 Acres

Elisha Wiloughby DLC. No. 48

North Half - 314.11 Acres.

Burt Wilbur Deputy County Surveyor

See C.S. No. 272 Folder File

for this line

See 24