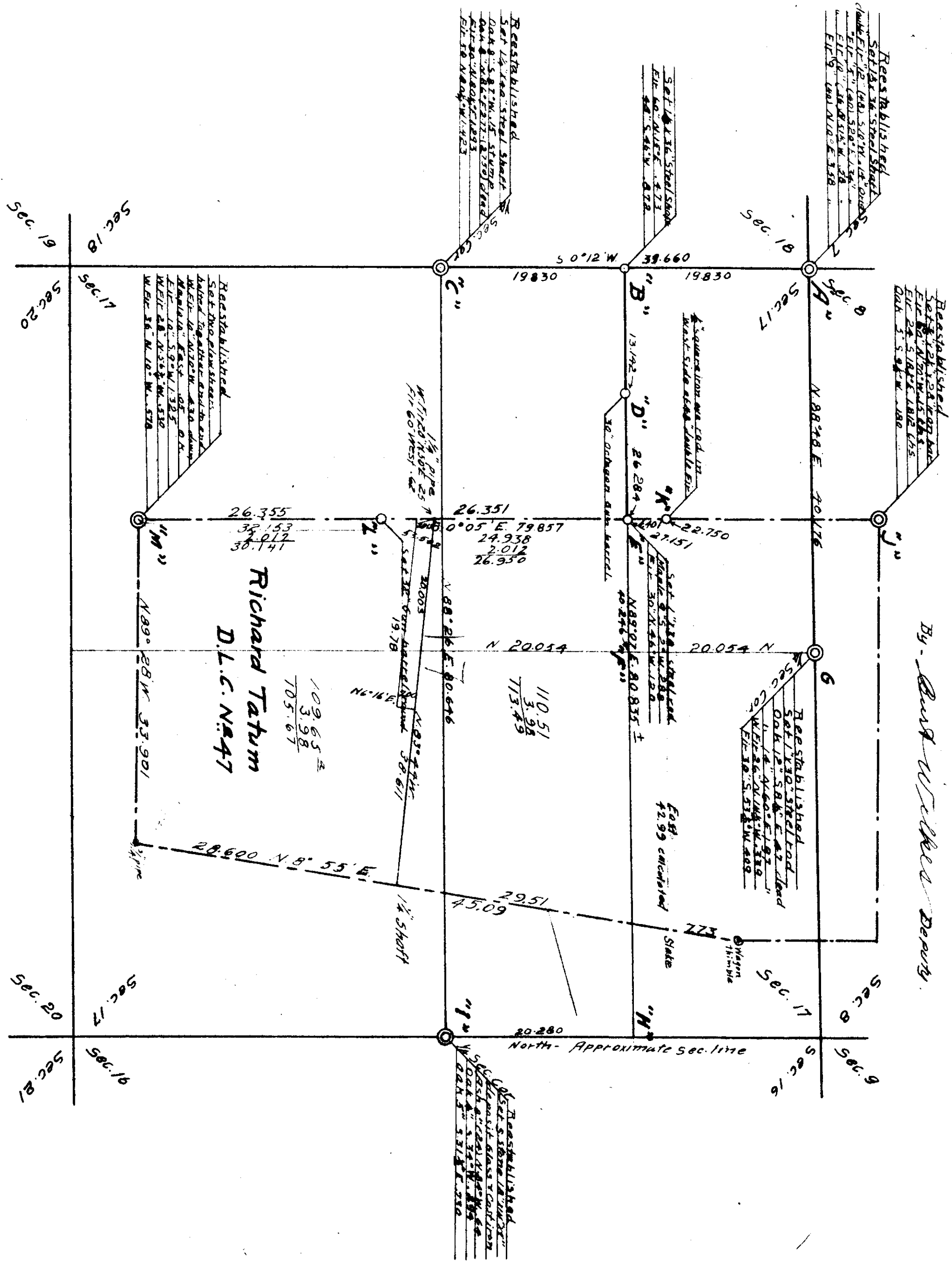


Scale 1 inch = 10 Chs

December 5, 1917

COUNTY SURVEY No 235
 IN
 Richard Tatum D.L.C. No 47 & Sec. 17
 of
 T10 S R. 6 W, Will. Mer. Benton County Oregon.
 Made For
 W.S. Alcorn, Jas Watson, W.H. Smith, John Townsend Heile's & Jas Townsend Heile's

W.C. Ballouway - County Surveyor
 By *W.C. Ballouway* Deputy



Richard Tatum
 D.L.C. No 47

109.65 ±
 3.98
 105.67

110.51
 3.98
 113.49

42.99 circled
 State

North - Approximate sec. line