

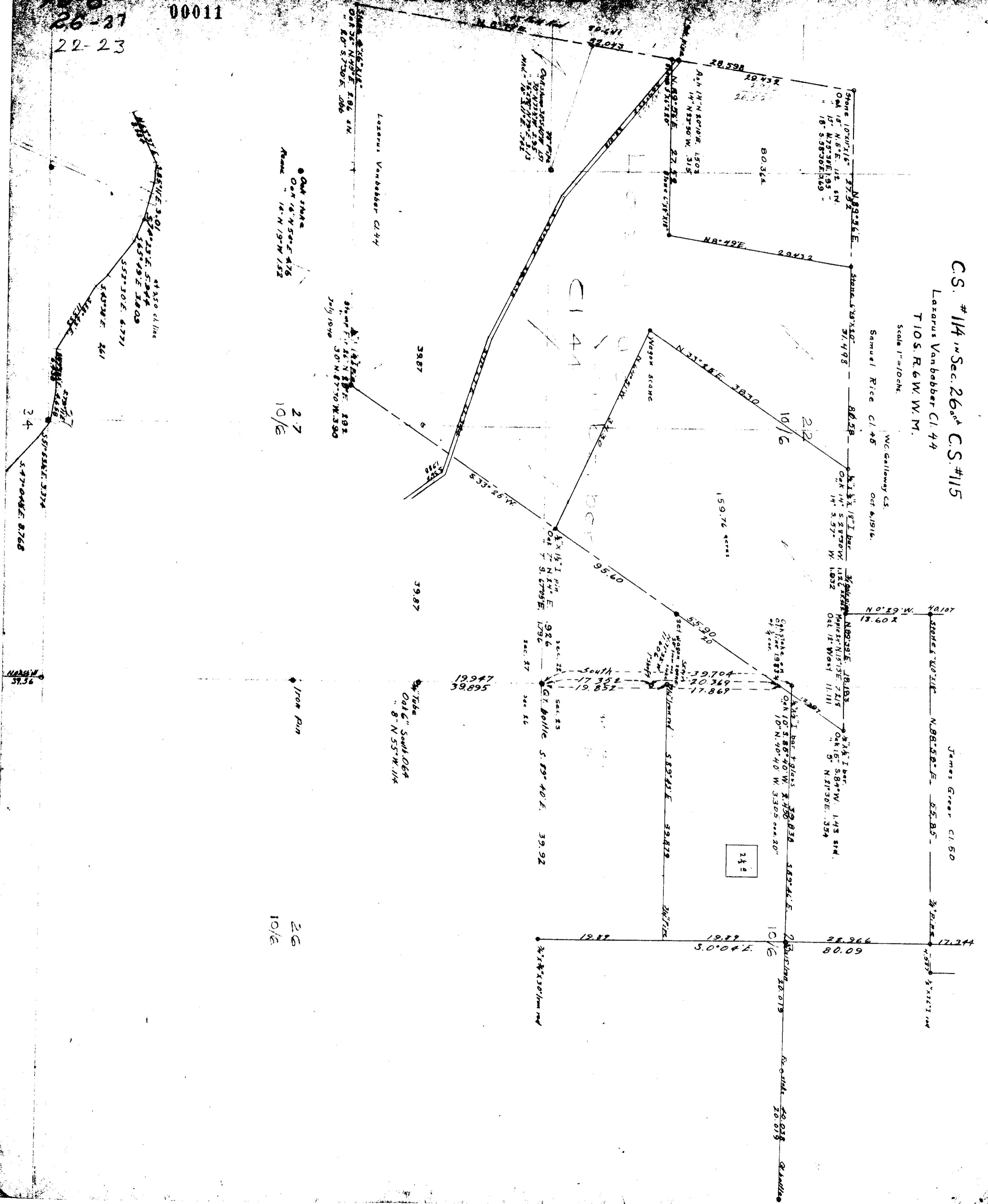
26-27
22-23
00011

C.S. #14 in Sec. 26 and C.S. #115

Lazarus Vanbaber C144

T10S.R.6W.W.M.
Scale 1"=100ch.
W.C. Galloway C.S.
Samuel Rice C145 Oct 6/1916.

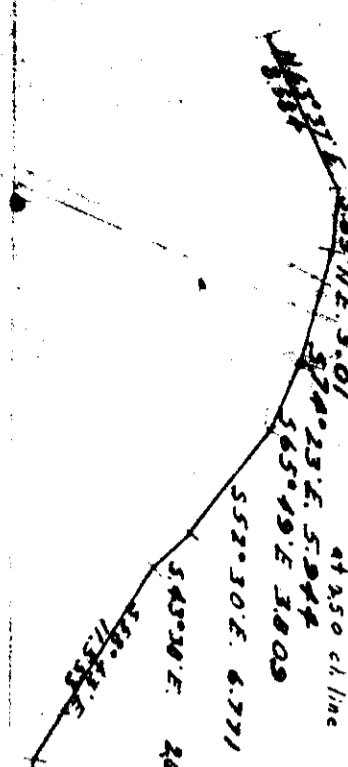
James Greer C150



Out stake
Oak 18" N 55° E 4.76
Remains 14" N 19° W 1.52

2.7
10/6

26
10/6



34
S 47° 04' E 8.768

Iron pin
57.36

8" Tube
Oak 6" South 0.64
8" N 55° W 1.14

19947
39.895

242

10/6
20.079
Galloway