

10-6

00013

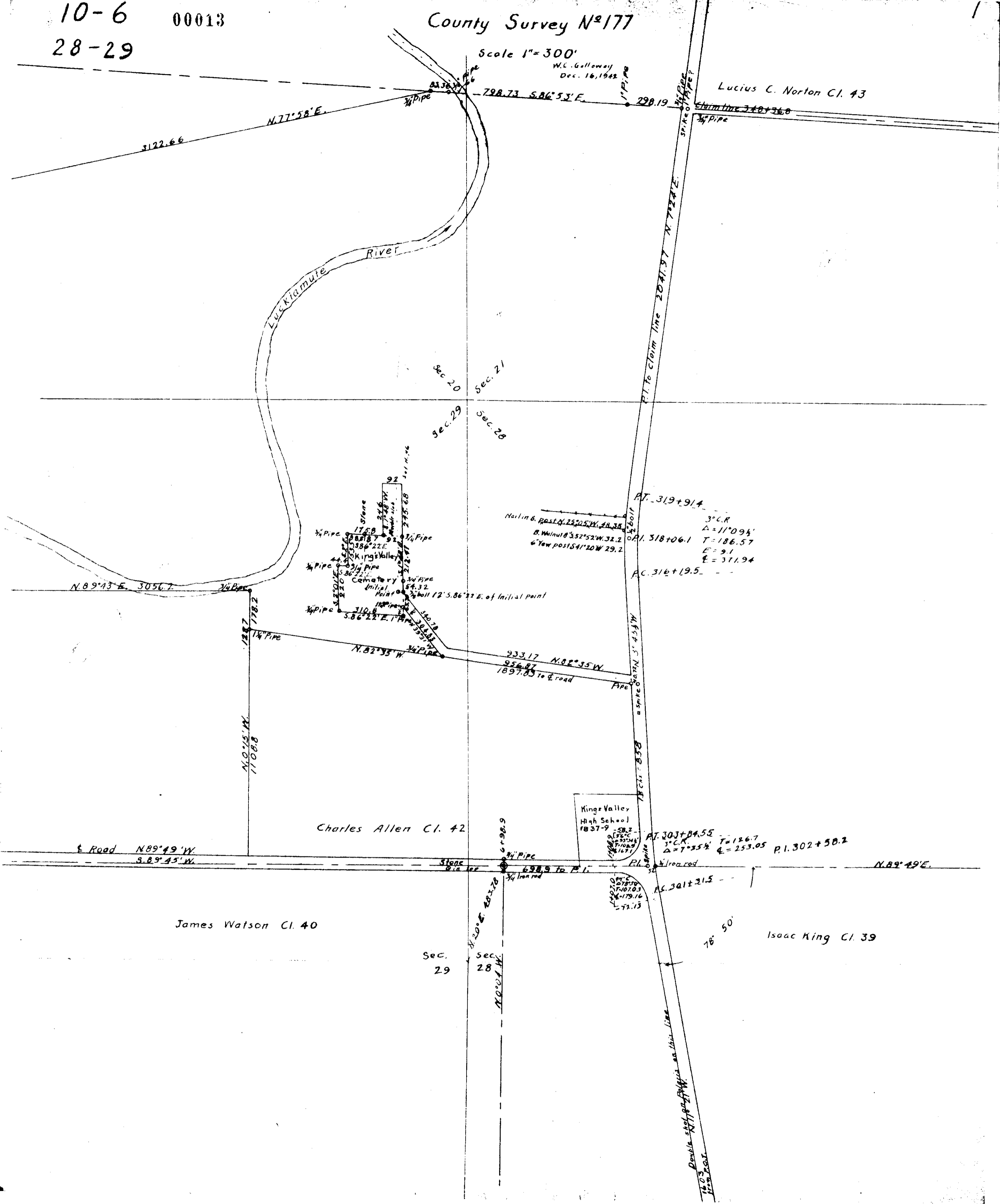
28-29

County Survey N^o 177

Scale 1"=300'

W.C. Galloway
Dec. 16, 1942

Lucius C. Norton Cl. 43



3122.66

N77°58'E.

798.73 S86°53'E.

290.19

Claim line 340+36.0

Luckiamute River

Sec. 20

Sec. 21

Sec. 29

Sec. 28

P.I. to claim line 20+197 N 77°42'E.

Nail in S. Post of 23705' W. 48.38
B. Walnut 8°52'S 2' W. 32.2
6" Yew post S 41° 20' W 29.2

P.T. 319+91.4

3° C.R.
Δ = 11° 09 1/2'
T = 186.57
E = 9.1
Σ = 371.94

P.C. 316+19.5

N. 89° 43' E. 3056.7

3/4 Pipe

128.7

1/4 Pipe

1108.8

178.2

Stone
92
17.58
3/4 Pipe
388.7
386° 22'E
King's Valley
Cemetery
Initial
Point
310.8
3/4 Pipe
5.86° 22' E. 117.8
3/4 Pipe
189.8
N. 82° 33' W
3/4 Pipe
30.18
3/4 Pipe
32.85
3/4 Pipe
32.85
3/4 Pipe
12.5.86° 22' E. of Initial point

933.17 N. 82° 35' W.
956.87
1897.85 to & road

1/4 Pipe

1897.85

to & road

Pipe

Charles Allen Cl. 42

King's Valley High School
1837-9

P.T. 303+84.55

3° C.R.
Δ = 7° 35 1/2'
T = 126.7
E = 253.05
P.I. 302+50.2

& Road N. 89° 49' W.
S. 89° 45' W.

Stone
6.10
102

6+98.9

3/4 Pipe

698.9 to P.I.

3/4 Iron rod

102

102

102

102

102

102

102

102

102

102

102

102

102

102

102

102

102

102

102

102

102

102

102

James Watson Cl. 40

Sec. 29

Sec. 28

P.I. 302+50.2

1/4 Iron rod

76° 50'

P.C. 301+21.5

Isaac King Cl. 39

Double spike in place as this line
103
Iron rod