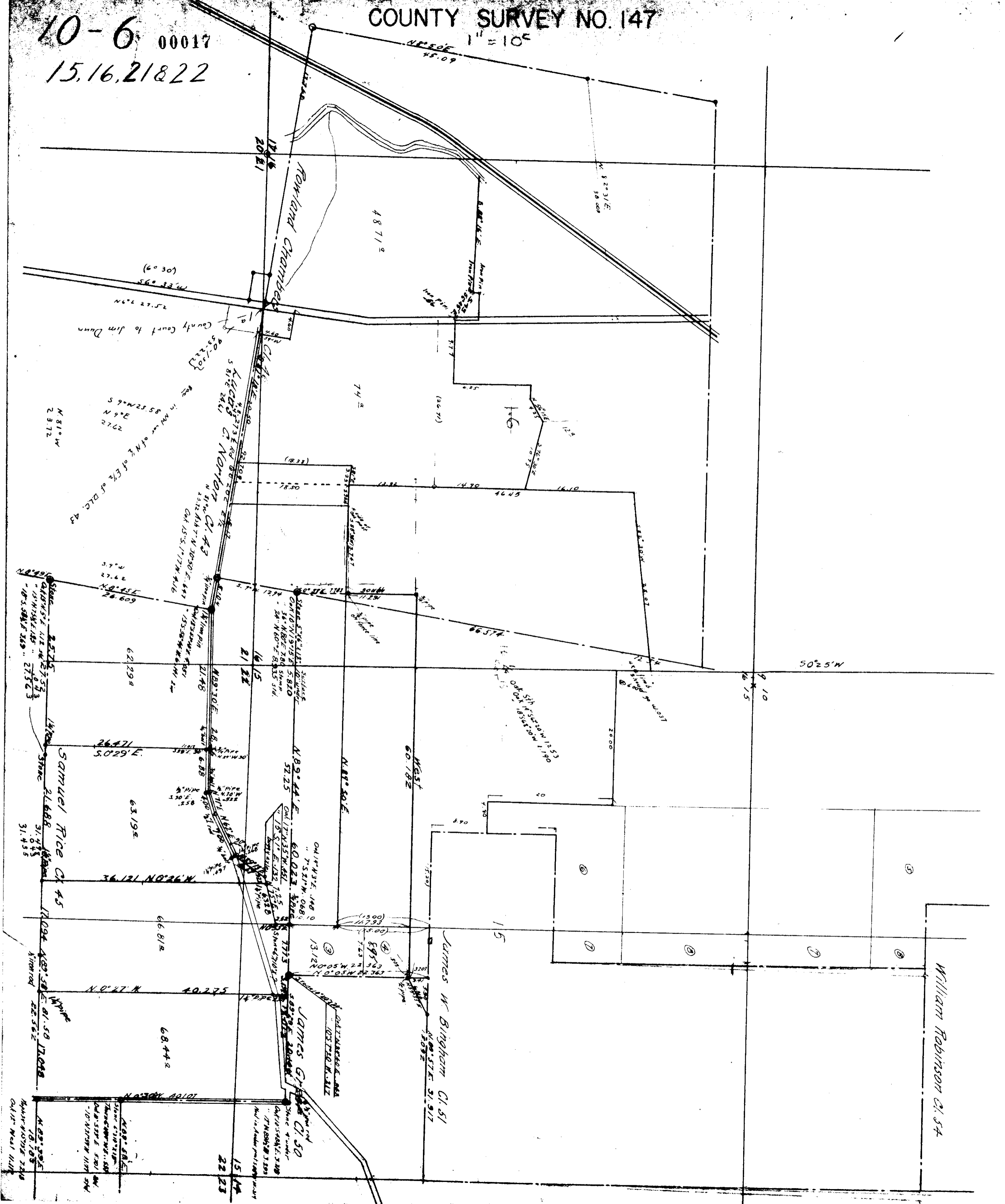


10-6 00017
15.16.21&22

COUNTY SURVEY NO. 147

1" = 10'



ROWLAND CHAMBERS

4871 2

County Court to Jim Dunn

N 81° 0' W
23.72

E 6° N
27.2

S 85° 52' 25.58" W
27.2

of N.E. of E 1/2 of D.L.C. 43

C.L. 43

Section 15

Section 16

Section 21

Section 22

SAMUEL RICE C.L. 45

Section 15

Section 16

Section 21

Section 22

JAMES W. BINGHAM C.L. 51

Section 15

Section 16

Section 21

Section 22

WILLIAM ROBINSON C.L. 54

Section 15

Section 16

Section 21

Section 22