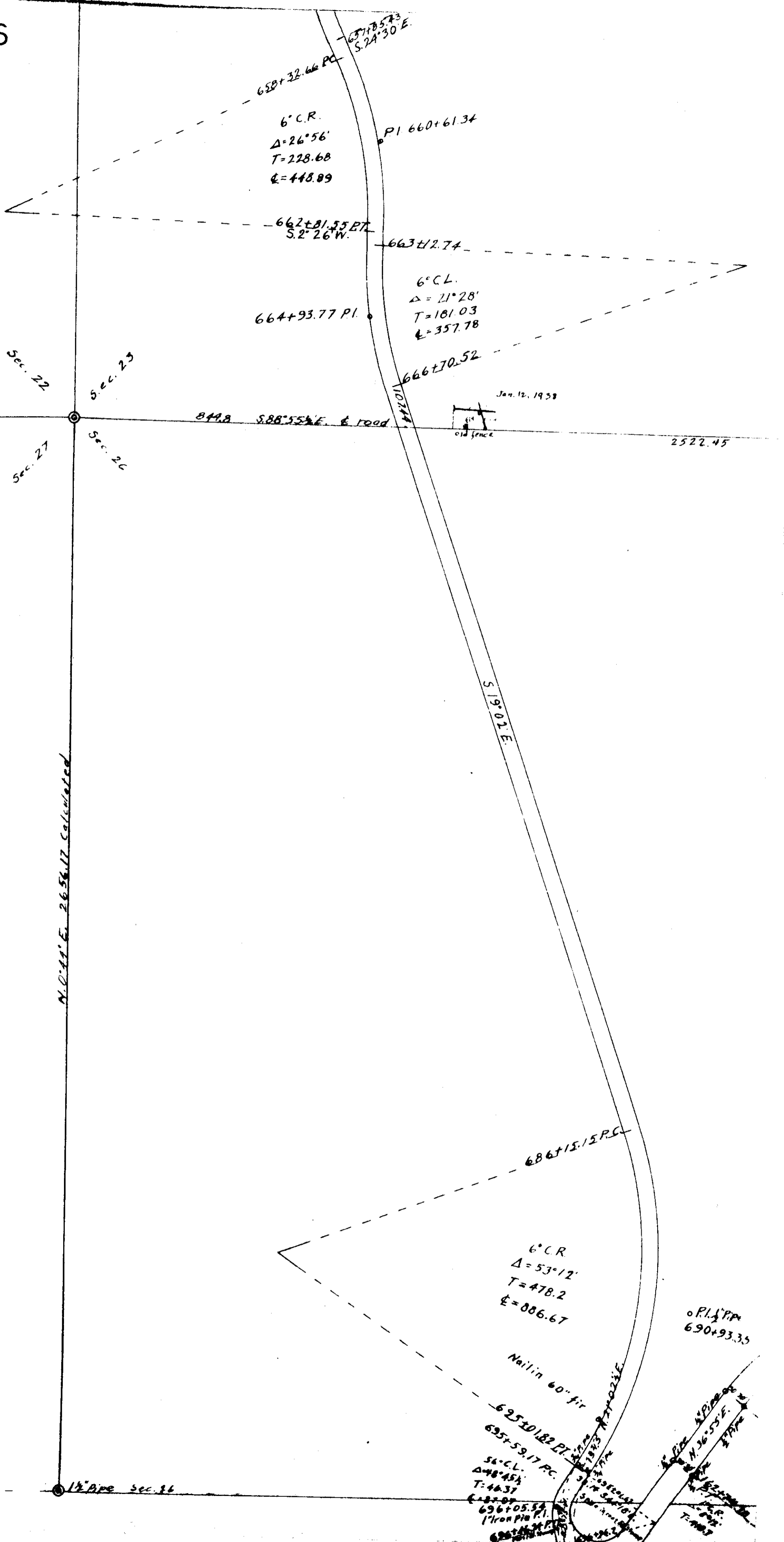


10-7  
26

00015

# ROAD # 596

SCALE 1" = 200'



6° C.R.  
 $\Delta = 26^{\circ} 56'$   
 $T = 228.68$   
 $E = 448.89$

637+75.73  
 S. 24° 30' E.

P.I. 660+61.34

662+01.55 P.I.  
 S. 2° 26' W.

663+12.74

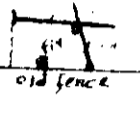
6° C.L.  
 $\Delta = 21^{\circ} 28'$   
 $T = 181.03$   
 $E = 357.78$

664+93.77 P.I.

666+70.52

Jan. 12, 1938

844.8 S. 88° 55' E. to road



2522.45

Sec. 22

Sec. 23

Sec. 27

Sec. 26

N. 0° 44' E. 2656.17 Calculated

S. 19° 01' E.

686+15.15 P.C.

6° C.R.  
 $\Delta = 53^{\circ} 12'$   
 $T = 478.2$   
 $E = 886.67$

P.I. 690+93.35

Nail in 60" fir

625+30.182 P.I.

635+59.17 P.C.

56° C.L.  
 $\Delta = 48^{\circ} 45'$   
 $T = 46.37$   
 $E = 87.07$

696+05.54  
 1" Iron Pipe

1 1/2" Pipe Sec. 28