

10-7 00018
32,33

D.S. 229 CS 247

James E. Post
John G. Post
Annie L. Reynolds
J. G. Mustoe
Wm. Oehman

No. 229 COUNTY SURVEY #247

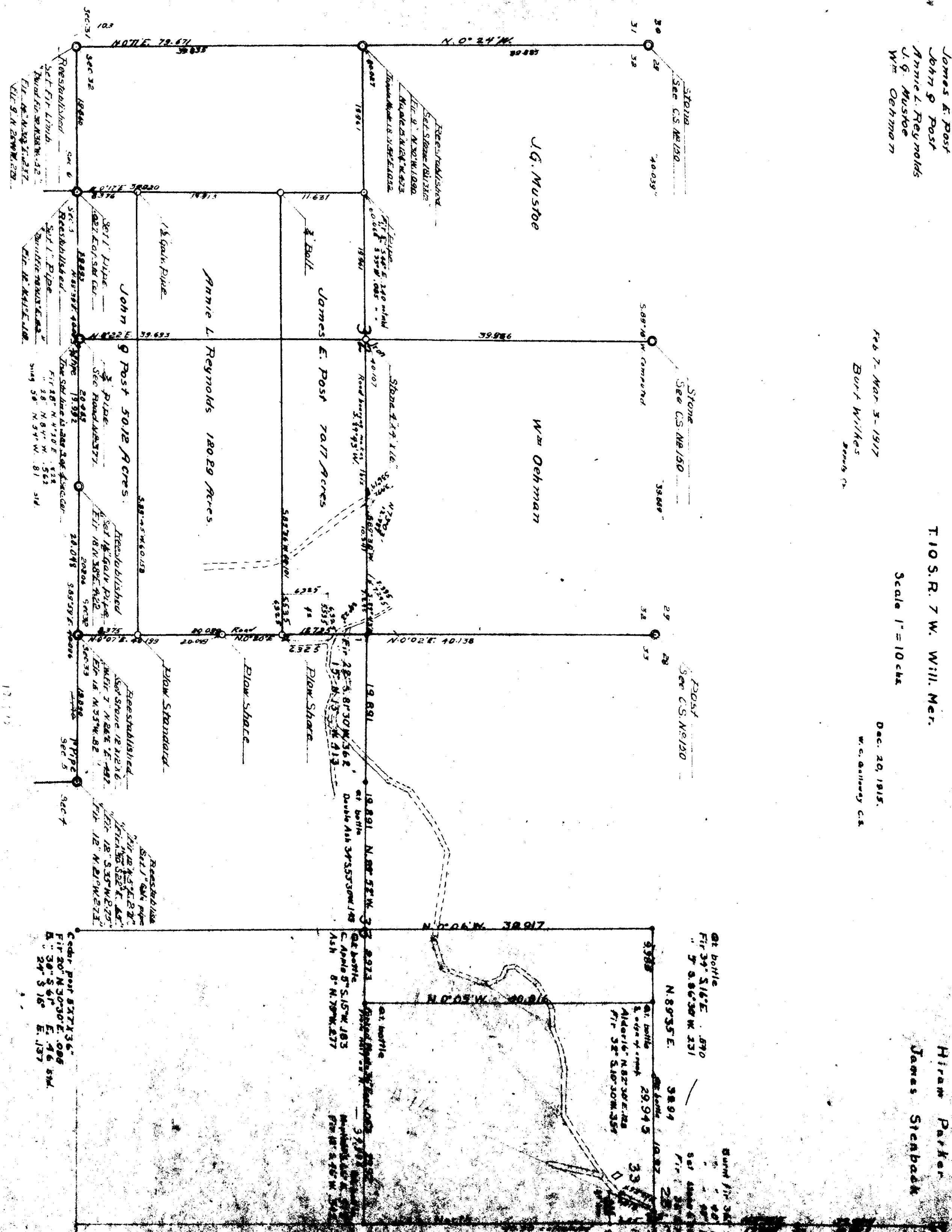
T10S.R. 7 W. Will. Mer.

Scale 1" = 10 chs

Feb 7, Mar 3, 1917
Burt Wilkes
Branch Co.

Dec. 20, 1915.
W.C. Bellows C.S.

Survey Made For:
Hiram Parker
James Steinhack



12.11
11.54
0.57

Cedar post 8.77 x 3.6
Fir 20" N 30-30° E. 6.08
E. 30" S 61° E. 7.6 5th
24" S 16° E. 1.37

at bottle
Fir 34" S 16° E. 5.70
" 5" S 66° 30' W 2.31
N 80° 35' E. 3.894

at bottle
20.945
Alder 16" N 87° 30' E. 1.85
Fir 32" S 10° 30' W 3.59

at bottle
19.891 N 82° 52' W 3.2
at bottle
19.891 S 15° W 3.62
C. Apple 5" S 15° W 1.85
Ash 8" N 70° W 2.17

at bottle
3.787
at bottle
3.787
at bottle
3.787