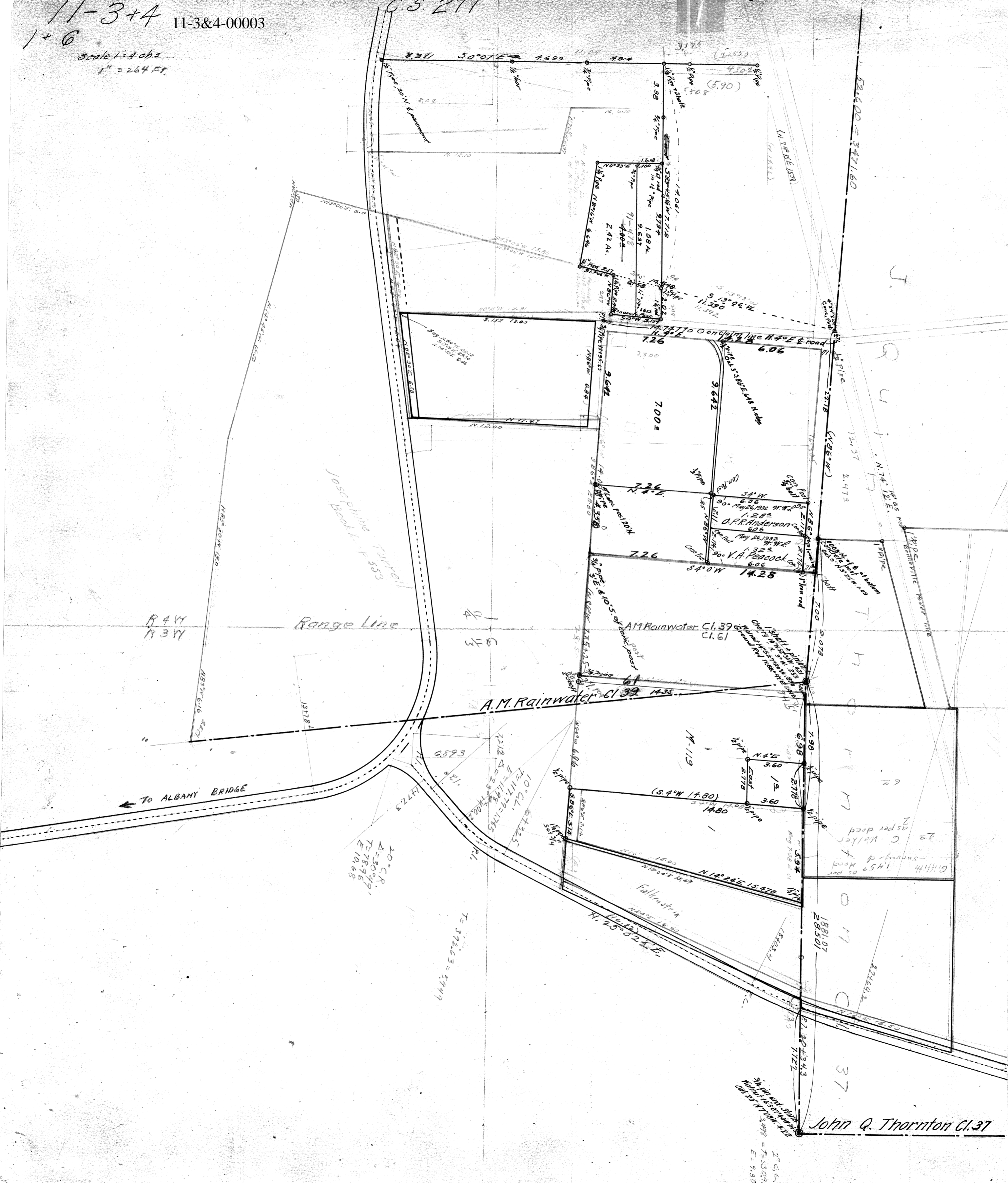


11-3+4 11-3&4-00003  
1+6  
Scale 1" = 40 ft  
1" = 264 ft

C.S. 277



R 4 VY  
R 3 VY

Range Line

TO ALBANY BRIDGE

20° C.R.  
A=30° 47'  
T=78.97  
E=10.68

T=372.63 = 574.9

John Q. Thornton Cl. 37

2° C.L.  
S 10° 07' E = 723.090  
E = 9.301