

1-4 10-4
2 35

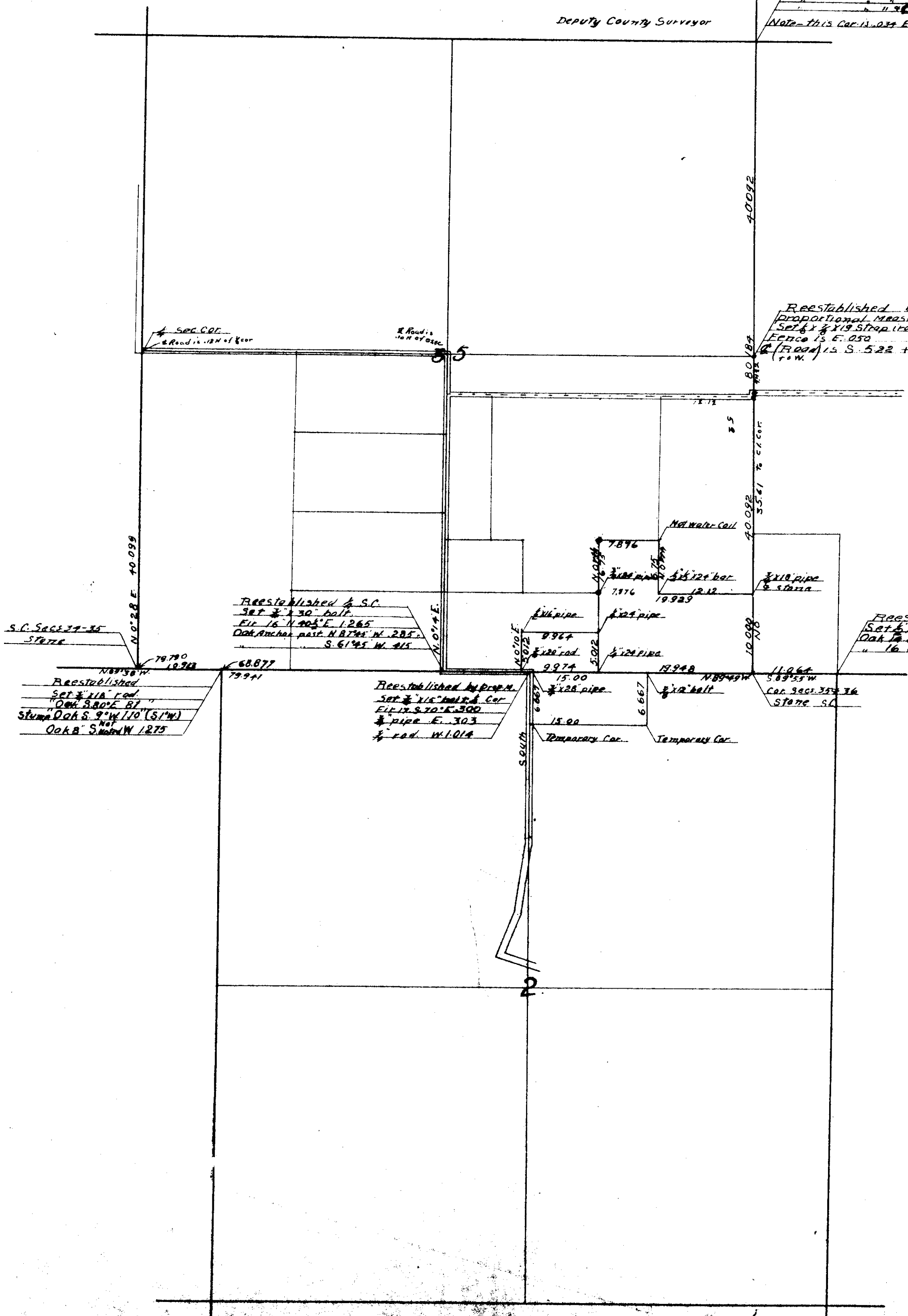
00004

COUNTY SURVEY N-225

C.O.R. Anderson *IN* Murray B. Cole.
Section 2 T.11 S., R. 4 W. Will. Mer. Section 35 T.10 S., R 4 W.
Scale 1" = 10 chs. Aug 8 - 1916

Deputy County Surveyor

Reestablished by
Proportional Measurements.
Set broken markers of plan
Cottonwood 16.32 S. 20 E. 35.85
Intersection of corner 16.32 S. E. 7.75
" 21.48 S. 20 E. 6.87
" " 21.48 S. 20 E. 6.87
Note - This Cor. is 0.39 E. of its true position



Reestablished by
Proportional Measurement
Set 1/4 x 1/8' Strip then 2 Stones
Fence is E. 0.50
(Road) is S. 5.22 +
+ W.

S.C. Secs 34-35
Stone
N 89° 58' W
79.790
12.718
Reestablished
Set 1/4 x 1/8' rod
"Oak 3.80 E 87"
Stump Oak S. 9° W 170' (S 1° W)
Oak B S. 10° W 1.275

Reestablished by S.C.
Set 1/4 x 30' half
Ell 16' N 20° E 12.65
Oak Ancher past N 87° 45' W 28.5
S. 61° 45' W 415

Reestablished by prop. M.
Set 1/4 x 1/8' half & Cor
Ell 12.570 S. 70° E. 300
1/4' pipe E. 303
1/4' rod W. 1.014

Reestablished
Set 1/4 x 22' oak pipe
Oak 14.5. 60.5' E. 66
1/4' 16. 3.11 1/2 E. 51