

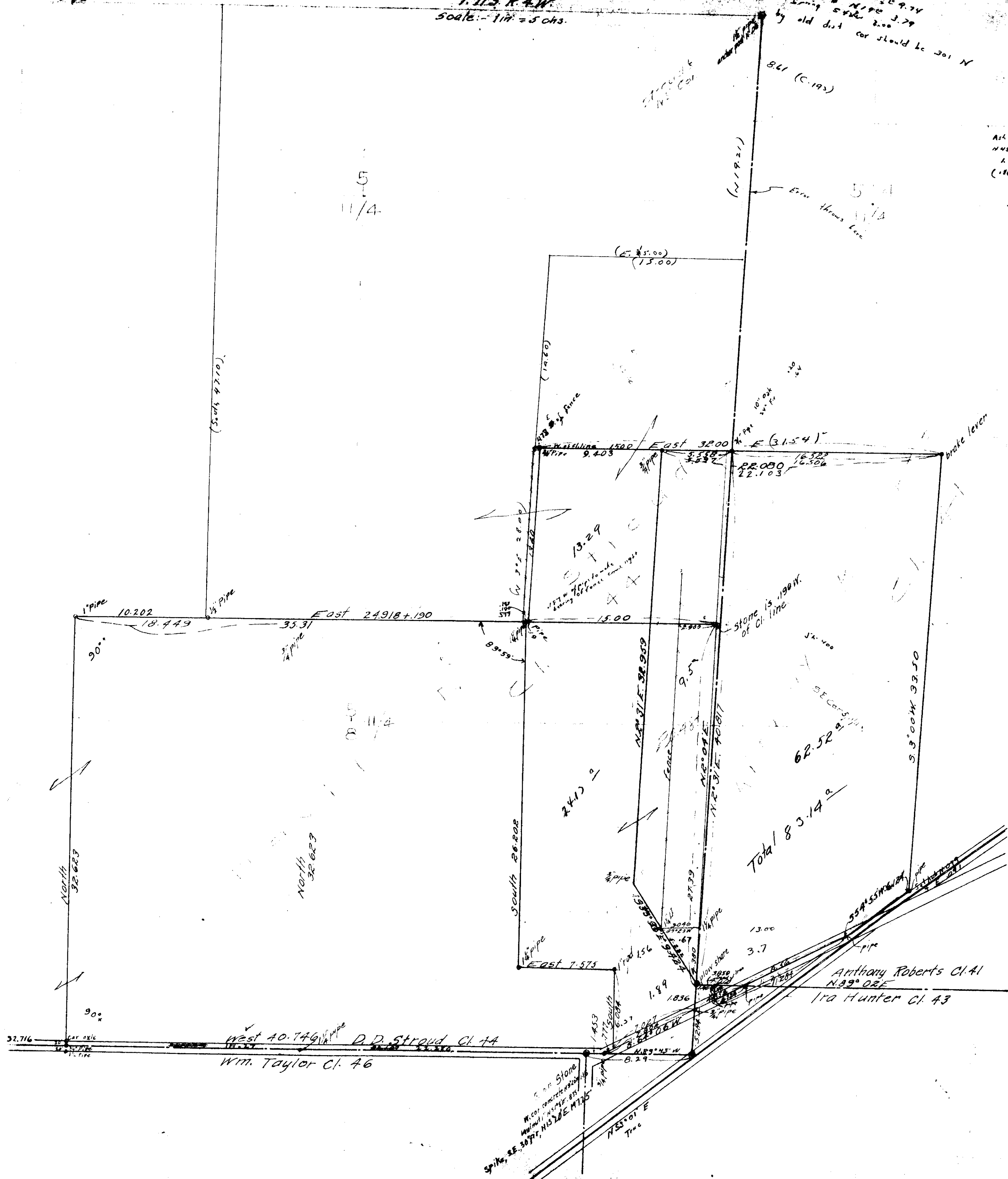
1F-4  
5,8

00009

C.B. 600  
T.H.S. R.A.W.  
Scale: - 1" = 5 chs.

30' x 81' x 5' 11"  
at Oak W. N. 190° E 9.74  
Spring 5/18/90 2.00 3.79  
by old dist. car should be 301 N

Ask 11  
NMS 200  
1.36  
(.164)



Total 83.14

Anthony Roberts Cl. 41  
N. 89° 08' E  
Ira Hunter Cl. 43

West 40.746  
D.D. Stroud Cl. 44  
Wm. Taylor Cl. 46

Stone  
W. cor. concrete  
Spike, SE 3077, N152E M735