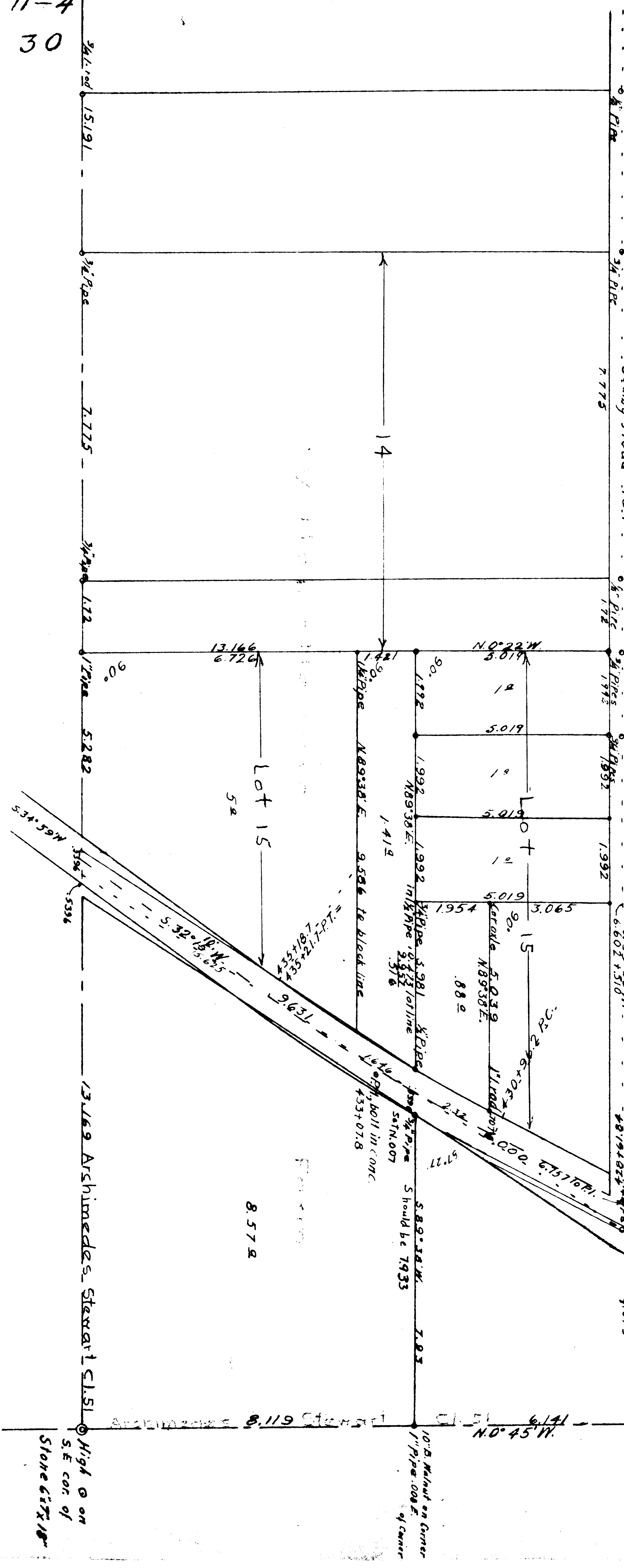


11-A
30

00019



High on
S.E. cor. of
Stone City 18"

Archimedes 8.119 Stewart

Cl. 51 6.141
N. 0° 45' W.

10" B. Walnut on Corner
1" Pipe .008 E.
of Corner

5.89° 34' W.
Should be 7.933

Set N. 007
433+07.8

Lot 15

8.572

Lot 15

90°

N. 0° 22' W.

90°

90°

90°

90°

100° 00' 00" 6.757 to Pl.

57.77

2.34

5.89° 34' W.

Cl. 51

6.141

N. 0° 45' W.

9.615

6.602 + 51.011

6.27° 30' 11"

6.602 + 51.011

6.602 + 51.011

6.602 + 51.011

6.602 + 51.011

6.602 + 51.011

6.602 + 51.011

6.602 + 51.011

6.602 + 51.011

6.602 + 51.011

6.602 + 51.011

6.602 + 51.011

6.602 + 51.011

6.602 + 51.011

6.602 + 51.011

6.602 + 51.011